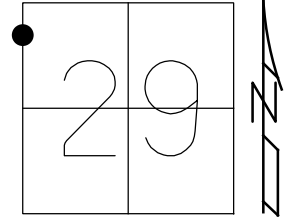


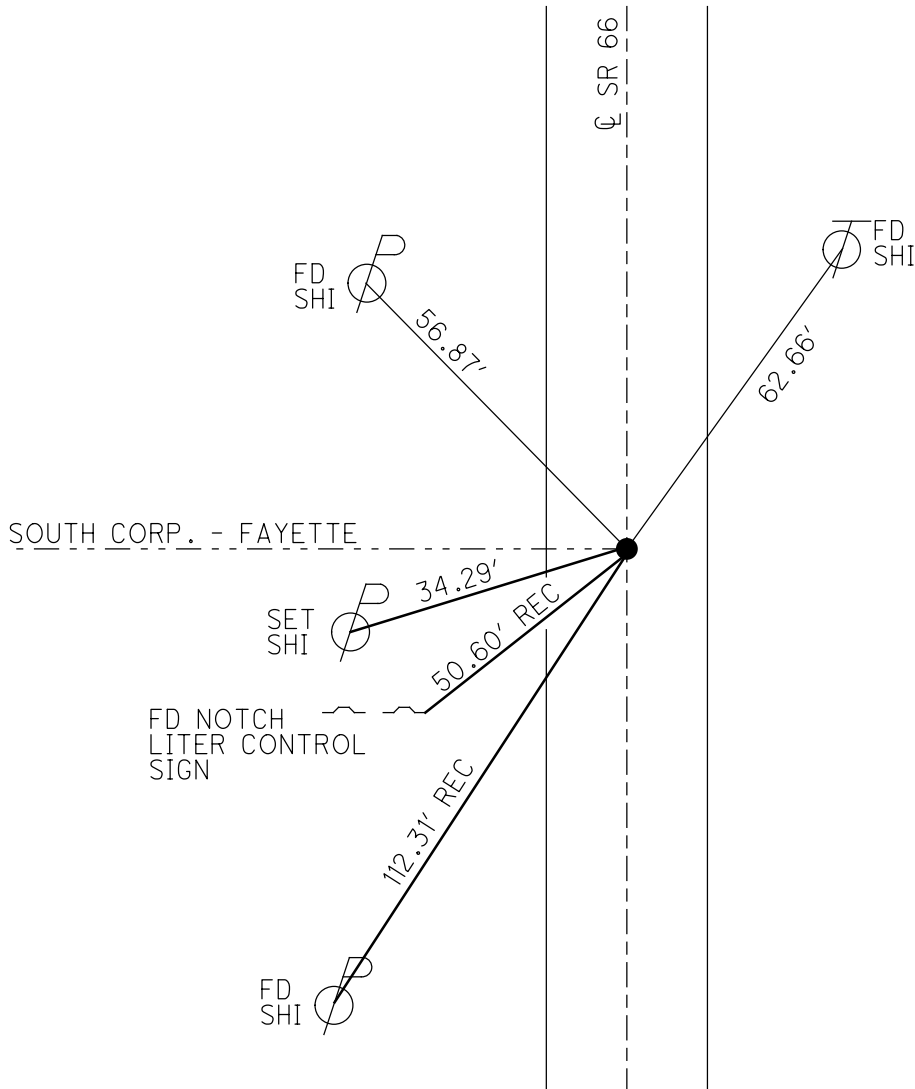
O.D.O.T. DISTRICT 2 SURVEY OFFICE (USE ONLY)

PERSONNEL \_\_\_\_\_ REFERENCE NO. 28 SHEET 46 OF 49  
 NOTES RHOADES DATE 7/6/18 ROUTE SR 66  
 H.C. O'DONNELL WEATHER SUNNY COUNTY FULTON  
 R.C. TRENKA TEMP. 74° TOWNSHIP GORHAM  
 DWG BY NIESE PID 102801 SECTION 29  
 T 9 S R 5 E

TYPE MONUMENT MAG/WASHER  
 ON SURFACE - ~~BELOW~~ ON \_\_\_\_\_  
 OFFSET  $\text{C}$  PAVEMENT 0.4' ~~LT~~ : RT  
11.2' TO LT EDGE PAVEMENT  
 STATION: 695+25.7



HORIZ.DATUM: NAD83(2011) GEOID: 2012A  
 GRID: NORTHING: 732547.056 EASTING: 1469306.211



RECORD:  
 FD PK/WASHER  
 10/12/93, CL  
 SET PK/WASHER  
 12/8/93, MC  
 FD PK/WASHER  
 6/19/07, TMR  
 SET MAG/WASHER  
 8/31/07, MC  
 FD MAG/WASHER  
 REF28  
 12/2/16  
 FD 1" DOWN  
 7/18/19, JFO

O.D.O.T. DISTRICT 2 SURVEY OFFICE (USE ONLY)

PERSONNEL \_\_\_\_\_

REFERENCE NO. 28

SHEET 11 OF 12

NOTES HOUDSHELL

DATE 06-19-07

ROUTE SR 66

H.C. ROUSOS

WEATHER CLOUDY

COUNTY FULTON

R.C. HOUDSHELL

TEMP. +80°

TOWNSHIP GORHAM

SECTION 29

T 9 S R 5 E

TYPE MONUMENT PK/WASHER

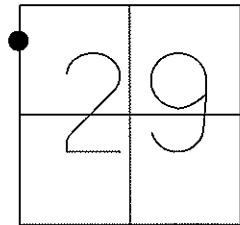
ON SURFACE - ~~BELOW~~ ON SURFACE

~~LEFT = C PAV'T~~ - RIGHT 0.4' RT.

11.2' TO LT. EDGE PAVEMENT

S.L.M. 688+58 (SV14)

Grid: Northing: 732546.981 Easting: 1469306.077



FD. PK/WASHER  
10-12-93 CL  
SET PK/WASHER  
12-08-93 MC  
SET MAG/WASHER  
08-31-07 MC

SET N/S  
FRUIT TREE



53.80'

SOUTH CORP.-FAYETTE



50.60'

NOTCH EAST-LEG  
LITTER CONTROL  
SIGN



112.31'

SET N/S  
E/S

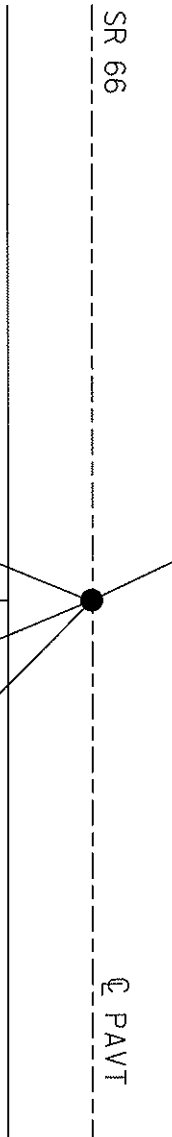


SR 66

C PAVT

62.65'

SET N/S  
SW/S



# O.D.O.T. DISTRICT 2 SURVEY OFFICE

PERSONNEL

REFERENCE NO. 28

SHEET 20 OF 22

NOTES D. CURTIS

H.C. LOEHRKE

R.C. Canterbury

DATE 10-12-93

WEATHER cloudy

TEMP. +50

ROUTE S.R. 606

COUNTY FULTON

TOWNSHIP GORHAM

SECTION 29

T 9 S R 5 E

TYPE MONUMENT P.K. NAIL

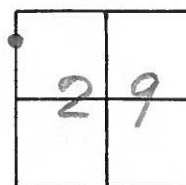
ON SURFACE - BELOW ON SURFACE

LEFT - ~~C~~ PAV'T. - RIGHT 0.4' RT.

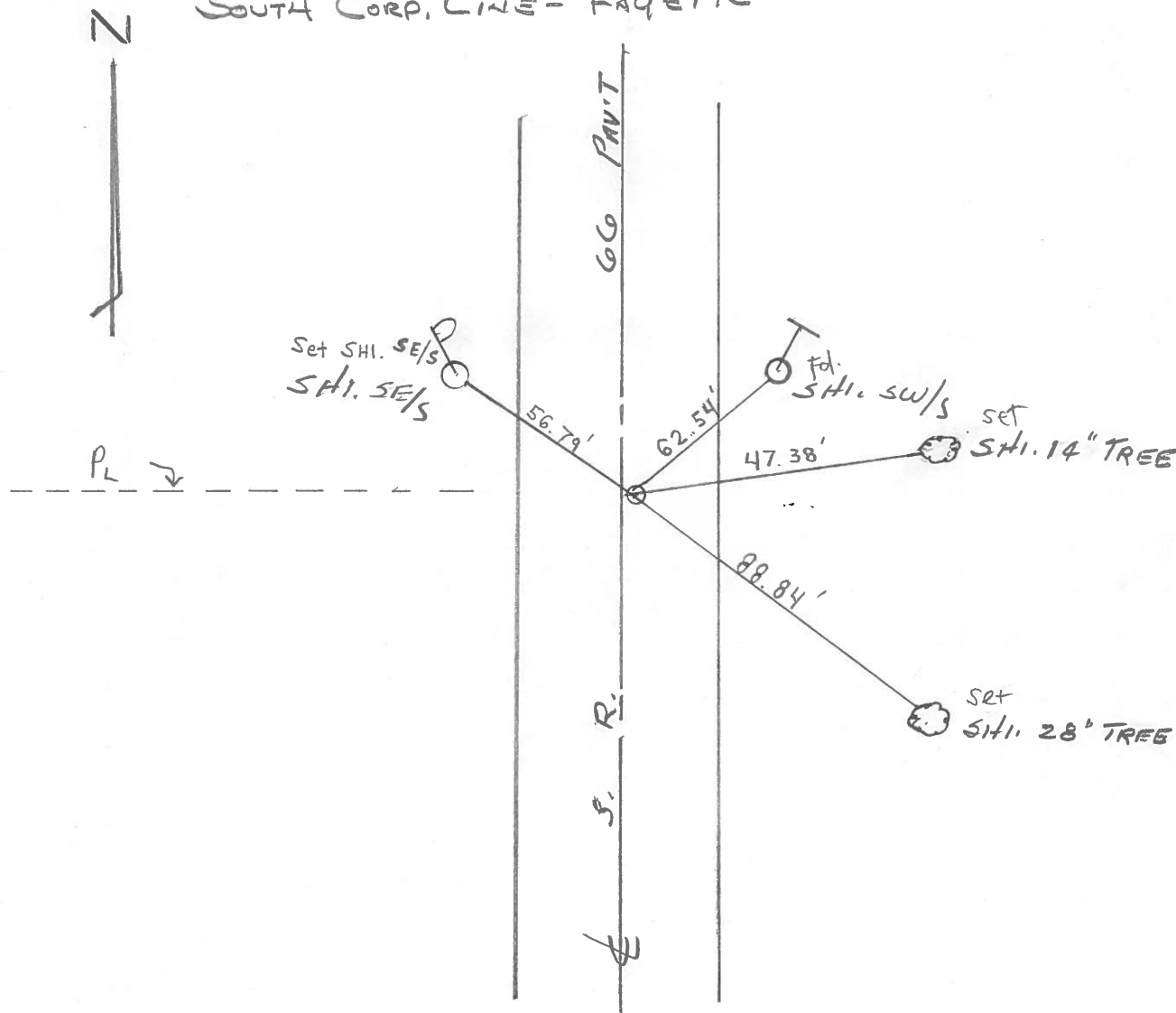
11.2 TO Lt. EDGE PAVEMENT

S.L.M. 697+57

Set PK/washer  
12/8/93  
MC



SOUTH CORP. LINE - FAYETTE



County Fulton S.R. 66

Township Georgetown

Section 29

T N, R E

Personnel I. Stone

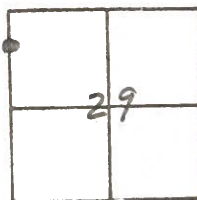
P. Neuser

R. Michalak

Date 8 Aug. 84

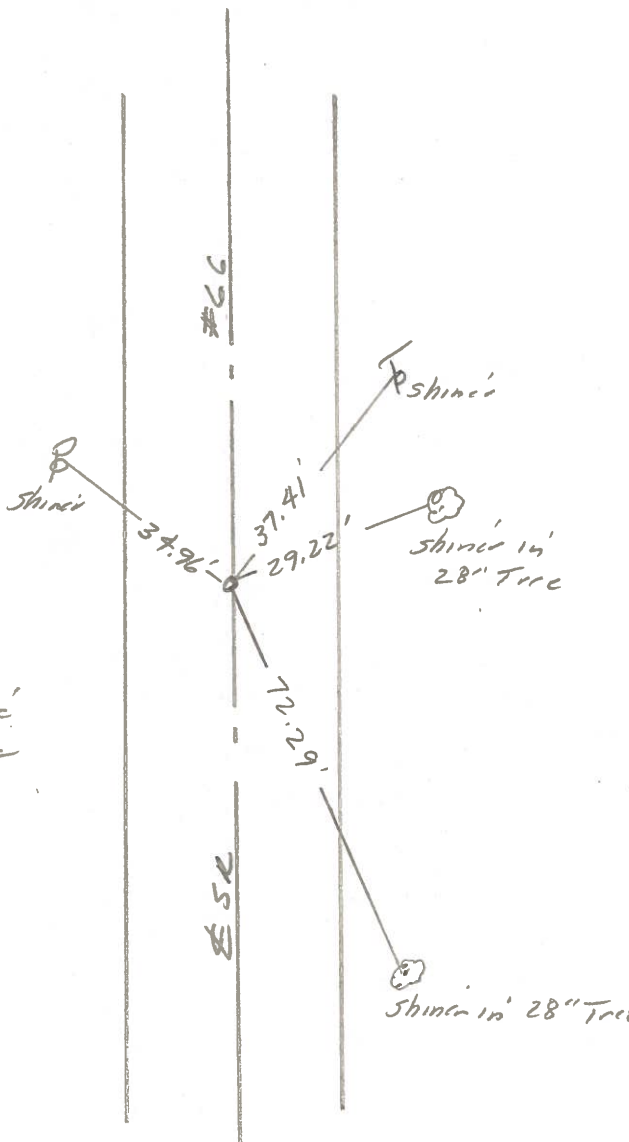
Weather Muggy

Temp. 77°



SLM STA. 697+

REF. NO. 28



Fayette South Corp Line  
 Fed. RR Spl. To Surface  
 1.2' E. of  $\pm$  put,  
 set PK Nail 11/06/84

PERSONNEL	TITLE	PERSONNEL	TITLE
RMSIC			
Neusex			
Vanno			
Boyle			

COUNTY FULTON DATE July-30-73  
 S. R. # 66 WEATHER cloudy Rain  
 SEC. \_\_\_\_\_ TEMP. 75°

DESCRIPTION Reference JOB NO. 024610

