

O.D.O.T. DISTRICT 2 SURVEY OFFICE (USE ONLY)

PERSONNEL

REFERENCE NO. 29

SHEET 47 OF 49

NOTES RHOADES

DATE 7/6/18

ROUTE SR 66

H.C. O'DONNELL

WEATHER CLOUDY

COUNTY FULTON

R.C. TRENKA

TEMP. 74°

TOWNSHIP GORHAM

DWG BY NIESE PID 102801

SECTION 29

T 9 S R 5 E

TYPE MONUMENT MAG/WASHER

ON SURFACE - ~~BELOW~~ ON

OFFSET $\text{\textcircled{C}}$ PAVEMENT 0.3' LT : ~~RT~~

- TO - EDGE PAVEMENT

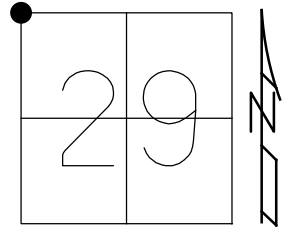
STATION: 698+50.47

HORIZ.DATUM: NAD88(2011)

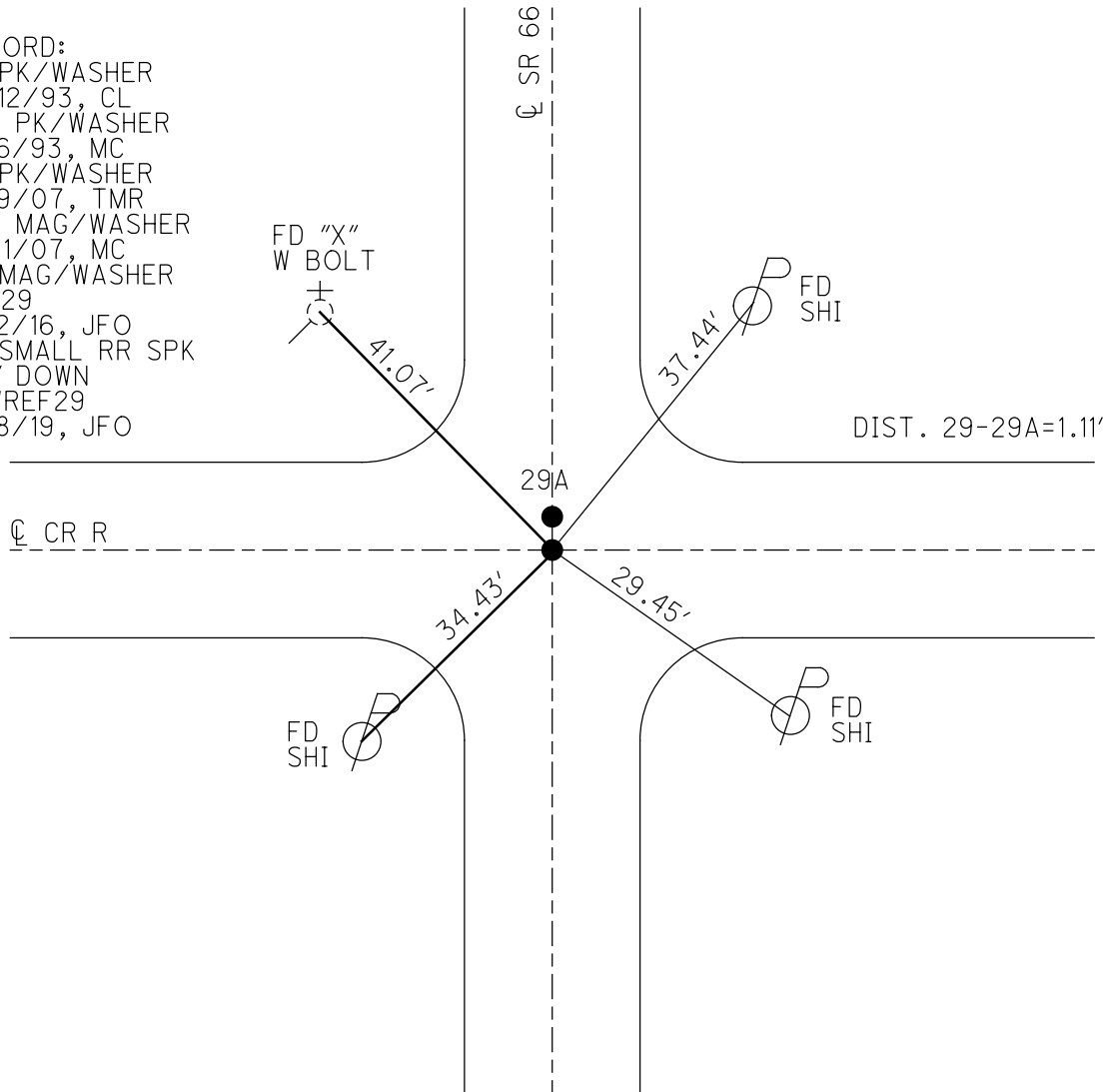
GEOID: 2012A

GRID: NORTHING: 733743.919

EASTING: 1469303.367



RECORD:
 FD PK/WASHER
 10/12/93, CL
 SET PK/WASHER
 12/6/93, MC
 FD PK/WASHER
 6/19/07, TMR
 SET MAG/WASHER
 8/31/07, MC
 FD MAG/WASHER
 REF29
 12/2/16, JFO
 FD SMALL RR SPK
 1/2" DOWN
 NEWREF29
 7/18/19, JFO



O.D.O.T. DISTRICT 2 SURVEY OFFICE (USE ONLY)

PERSONNEL

REFERENCE NO. 29

SHEET 12 OF 12

NOTES HOUDSHELL

DATE 06-19-07

ROUTE SR 66

H.C. ROUSOS

WEATHER CLOUDY

COUNTY FULTON

R.C. HOUDSHELL

TEMP. +80°

TOWNSHIP GORHAM

SECTION 19-20-29-30

T 9 S R 5 E

TYPE MONUMENT PK/WASHER

~~ON SURFACE~~ = BELOW ON SURFACE

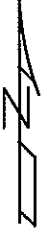
LEFT - ☉ PAV'T = ~~RIGHT~~ 0.30' LT.

 TO EDGE PAVEMENT

S.L.M. 700+55 (SV15)

Grid: Northing: 733743.919 Easting: 1469303.315

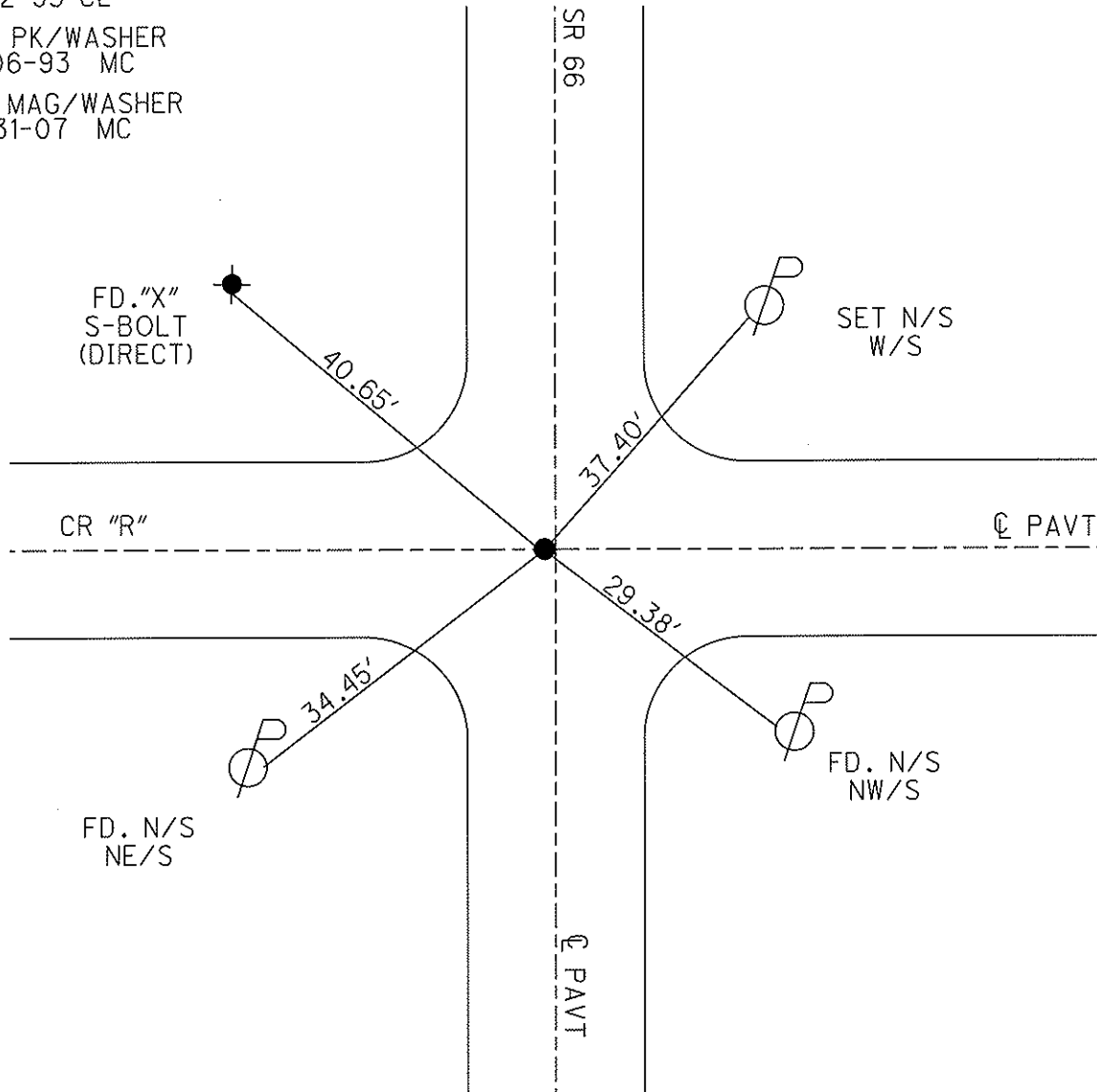
19	20
30	29



FD. PK/WASHER
10-12-93 CL

SET PK/WASHER
12-06-93 MC

SET MAG/WASHER
08-31-07 MC



O.D.O.T. DISTRICT 2 SURVEY OFFICE

PERSONNEL

REFERENCE NO. 29

SHEET 21 OF 22

NOTES D. CURTIS

H.C. LOEHRKE

R.C. Canterbury

DATE 10-12-93

WEATHER Cloudy

TEMP. +50

ROUTE S. R. 66

COUNTY FULTON

TOWNSHIP GORDHAM

SECTION 19-20-29-30

T 9 S R 5 E

TYPE MONUMENT P.K. NAIL

Set PK/washer

ON SURFACE - BELOW ON SURFACE

12/8/93

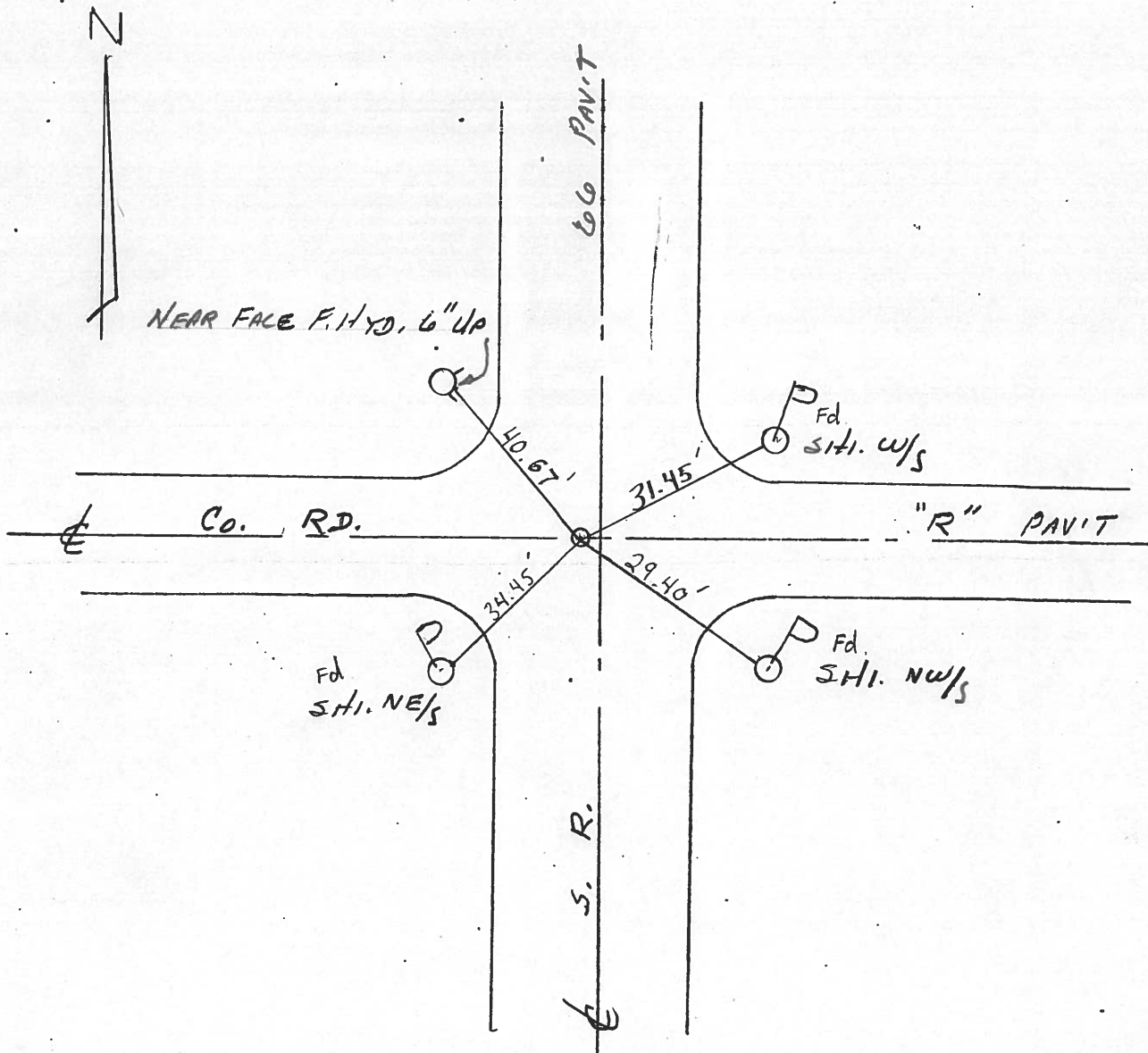
LEFT - ~~C~~ PAV'T. - RIGHT 0.3' Lt.

MC

TO EDGE PAVEMENT

S.L.M. 709+50

.19	20
30	29



County Fulton S.R. 66

Date 8 Aug. 84

Township 6 or ham

Weather Muggy

Section 19-20-29-30

Temp. 78°

T N, R E

Personnel I. Stone

P. Neuse

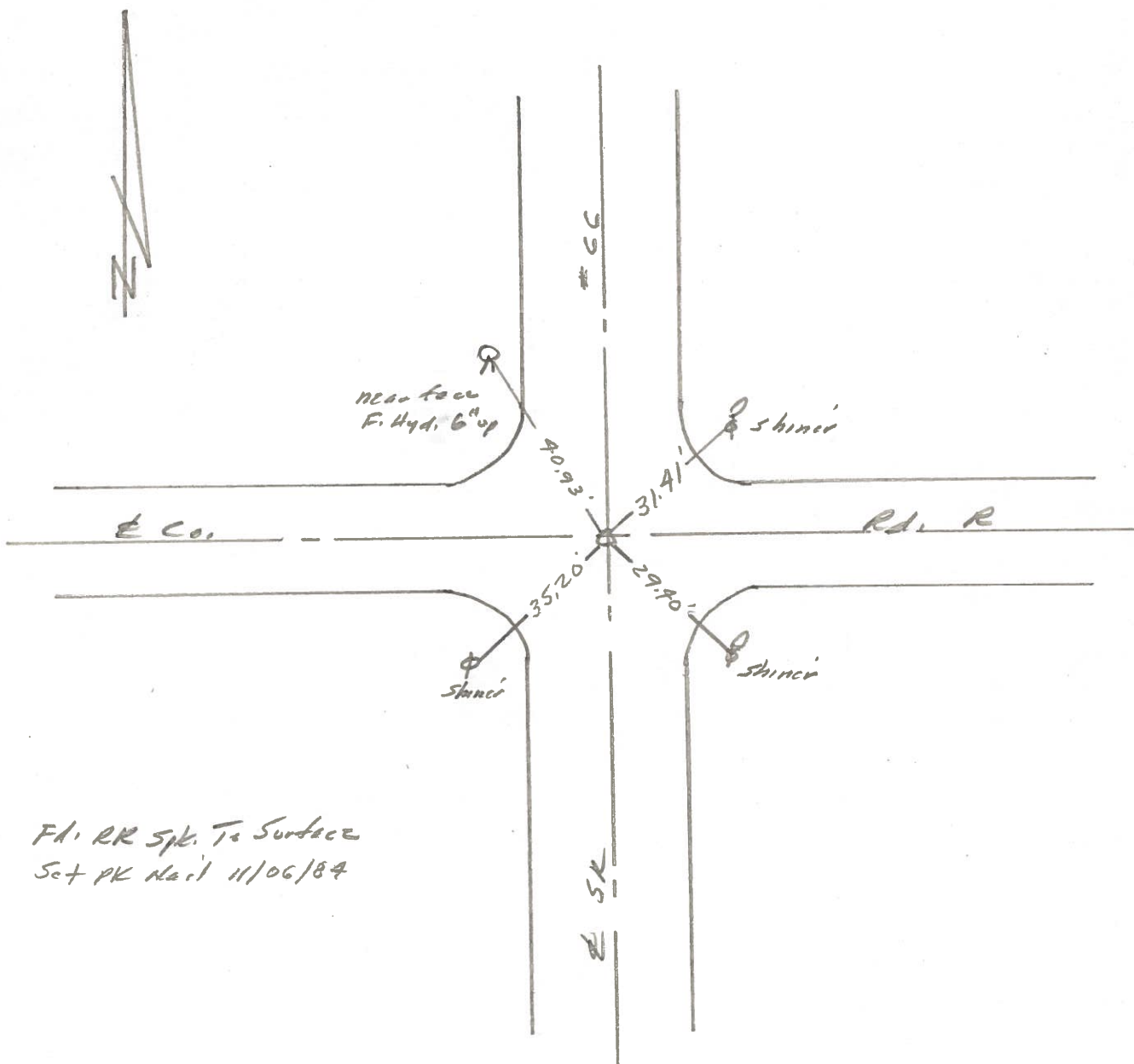
R. Michalak

19	20
30	29



544 709+

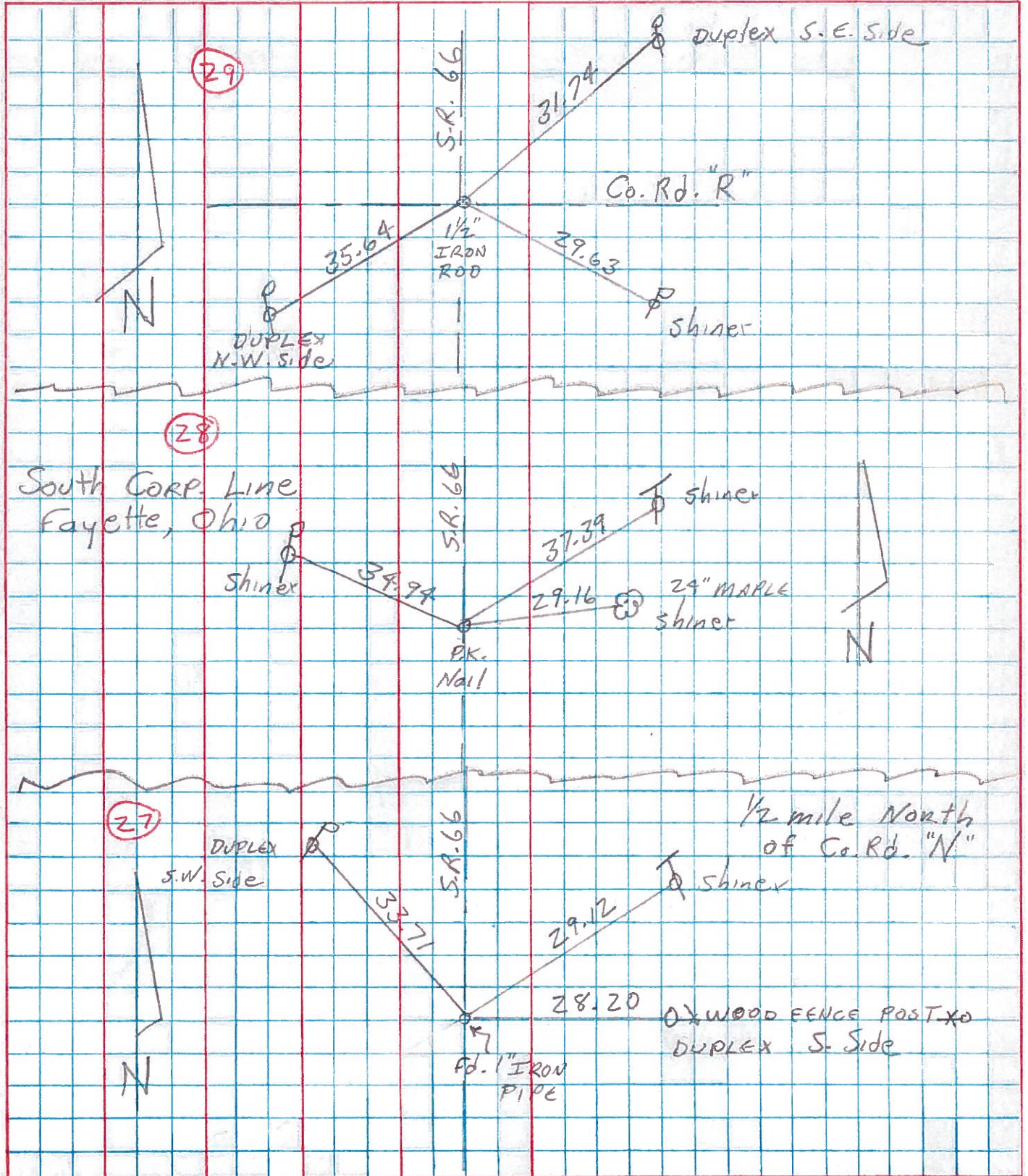
REF. NO. 29



PERSONNEL	TITLE	PERSONNEL	TITLE
Kmsic			
Neuser			
Vando			
Boyle			

COUNTY FULTON DATE July-30-73
 S. R. # 66 WEATHER cloudy Rain
 SEC. _____ TEMP. 75°

DESCRIPTION Reference LEFT CENTER LINE RIGHT JOB NO. 024610



PERSONNEL TITLE PERSONNEL TITLE

Red Beach

COUNTY FULTON

DATE June-July 74

W. Knape

S. R. 66

WEATHER

D. Boyle

SEC. Franklin-Gorham

TEMP.

J. Bagdonas

DESCRIPTION

ALIGNMENT

JOB NO.

± US 20 & Main St. 7
Qtr. Line

2673.14

1339.33

± US 20 & Main St. 7
Qtr. Line

91° 01.0'

90° 22.4'

FAYETTE

FAYETTE

29

± Twp. Rd. "R" 7

2587.76

180° 07.2'

± Twp. Rd. "R" 7

71.32'

2648.04

± Fayette St. 7

± S. R. 66 7

30

27

2655.43

179° 55.5'

29

± Co. Rd. "N" 7

26

2645.94

179° 32.7'

2636.41

31

25

2639.04

180° 51.5'

32

T-9-S
S

GORHAM
FRANKLIN

24

2639.04

180° 32.1'

± Co. Rd. "M" 7

GORHAM
FRANKLIN

52