

O.D.O.T. DISTRICT 2 SURVEY OFFICE (USE ONLY)

PERSONNEL

REFERENCE NO. 29 A

SHEET 48 OF 49

NOTES RHOADES

DATE 7/6/18

ROUTE SR 66

H.C. O'DONNELL

WEATHER CLOUDY

COUNTY FULTON

R.C. TRENKA

TEMP. 74°

TOWNSHIP GORHAM

SECTION 29

DWG BY NIESE PID 102801

T 9 S R 5 E

TYPE MONUMENT MAG/WASHER

ON SURFACE - ~~BELOW~~ ON                     

OFFSET  $\varnothing$  PAVEMENT 0.3' LT : ~~RT~~

- TO - EDGE PAVEMENT

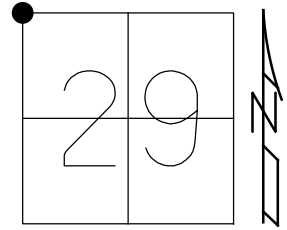
STATION: 698+50.5

HORZ.DATUM: NAD88(2011)

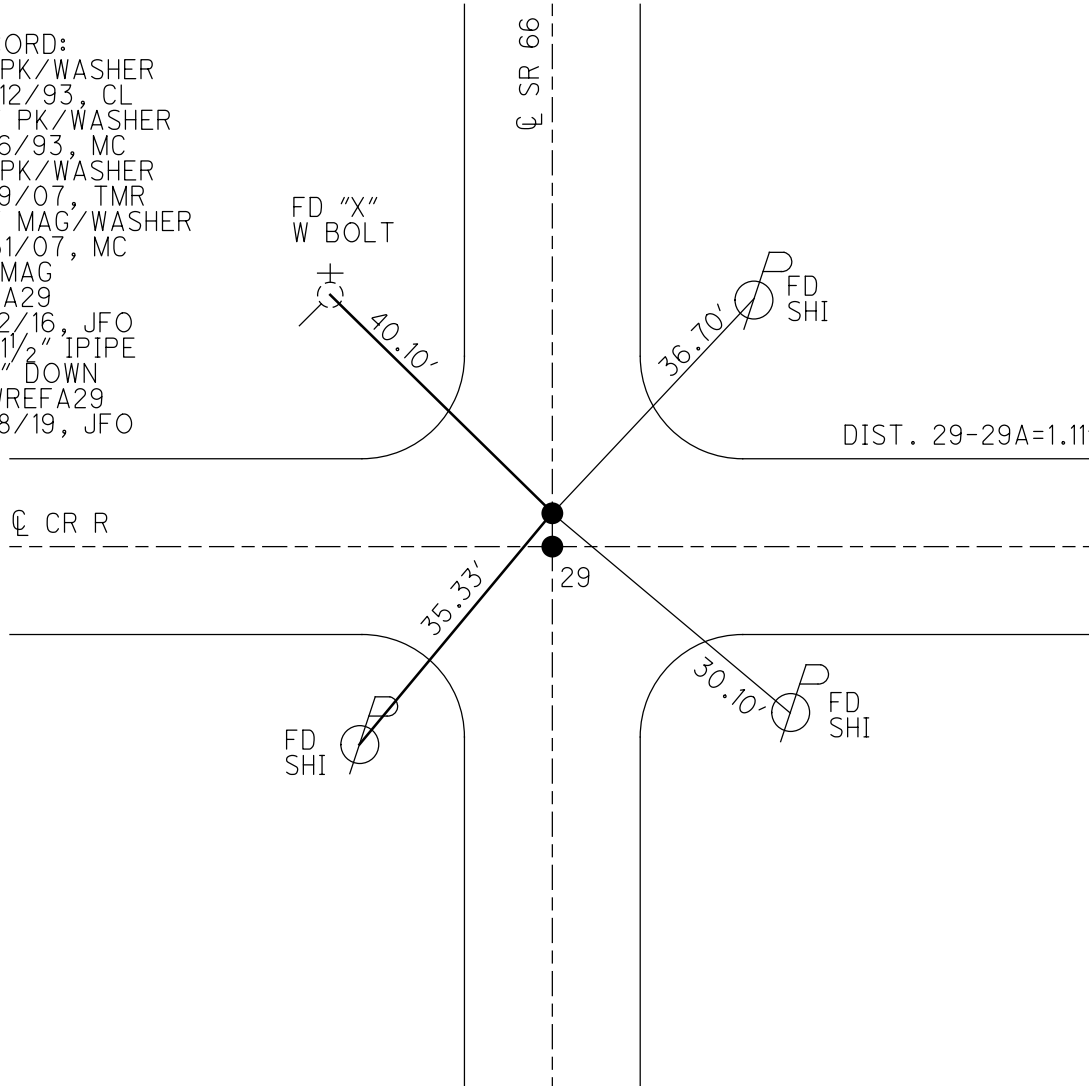
GEOID: 2012A

GRID: NORTHING: 733745.008

EASTING: 1469303.476



RECORD:  
 FD PK/WASHER  
 10/12/93, CL  
 SET PK/WASHER  
 12/6/93, MC  
 FD PK/WASHER  
 6/19/07, TMR  
 SET MAG/WASHER  
 8/31/07, MC  
 FD MAG  
 REFA29  
 12/2/16, JFO  
 FD 1 1/2" IPIPE  
 2 1/2" DOWN  
 NEWREFA29  
 7/18/19, JFO



DIST. 29-29A=1.11'