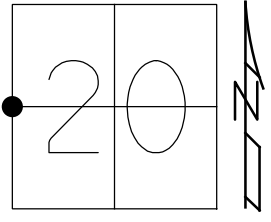


O.D.O.T. DISTRICT 2 SURVEY OFFICE (USE ONLY)

PERSONNEL \_\_\_\_\_ REFERENCE NO. 30 SHEET 49 OF 49  
 NOTES LEU DATE 4/13/17 ROUTE SR 66  
 H.C. HOMAN WEATHER OVERCAST COUNTY FULTON  
 R.C. LEU TEMP. 48° TOWNSHIP GORHAM  
 DWG BY NIESE PID 102801 SECTION 20  
 T 9 S R 1 E

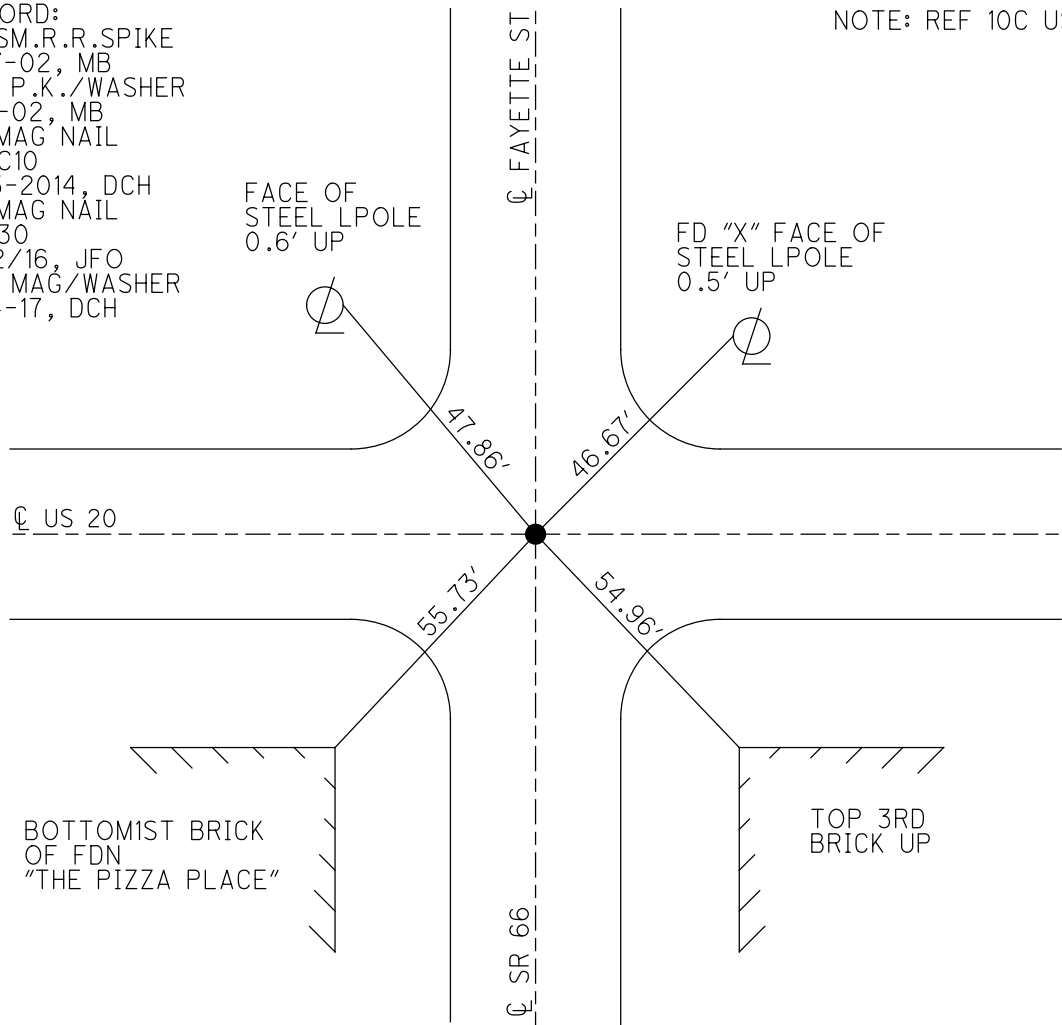
TYPE MONUMENT MAG NAIL  
~~ON SURFACE~~ - BELOW ON  
 OFFSET ☉ PAVEMENT ON LT : RT  
- TO - EDGE PAVEMENT  
 STATION: 724+98.3



HORZ.DATUM: NAD83(2011) GEOID: 2012A  
 GRID: NORTHING: 736392.803 EASTING: 1469290.012

RECORD:  
 FD SM.R.R.SPIKE  
 5-17-02, MB  
 SET P.K./WASHER  
 6-6-02, MB  
 FD MAG NAIL  
 REFC10  
 4-13-2014, DCH  
 FD MAG NAIL  
 REF30  
 12/2/16, JFO  
 SET MAG/WASHER  
 8-14-17, DCH

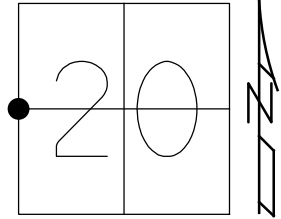
NOTE: REF 10C US 20



O.D.O.T. DISTRICT 2 SURVEY OFFICE (USE ONLY)

PERSONNEL \_\_\_\_\_ REFERENCE NO. 30 SHEET 49 OF 49  
 NOTES CANTERBURY DATE 5/17/02 ROUTE SR 66  
 H.C. BARNHISEL WEATHER OVERCAST COUNTY FULTON  
 R.C. MOSER TEMP. 52° TOWNSHIP GORHAM  
 SECTION 20  
 DWG BY NIESE PID 102801 T 9 S R 1 E

TYPE MONUMENT SM.R.R.SPIKE  
~~ON SURFACE~~ - BELOW 4 1/2"  
 OFFSET  $\varnothing$  PAVEMENT - LT : RT  
- TO - EDGE PAVEMENT  
 STATION: 724+98.3



HORZ.DATUM: NAD83(2011) GEOID: 2012A  
 GRID: NORTHING: 736392.803 EASTING: 1469290.012

RECORD:  
 SET PK/WASHER  
 6/6/02, MB  
 FD MAG NAIL  
 REF30  
 12/2/16, JFO

