

OHIO STATE HIGHWAY

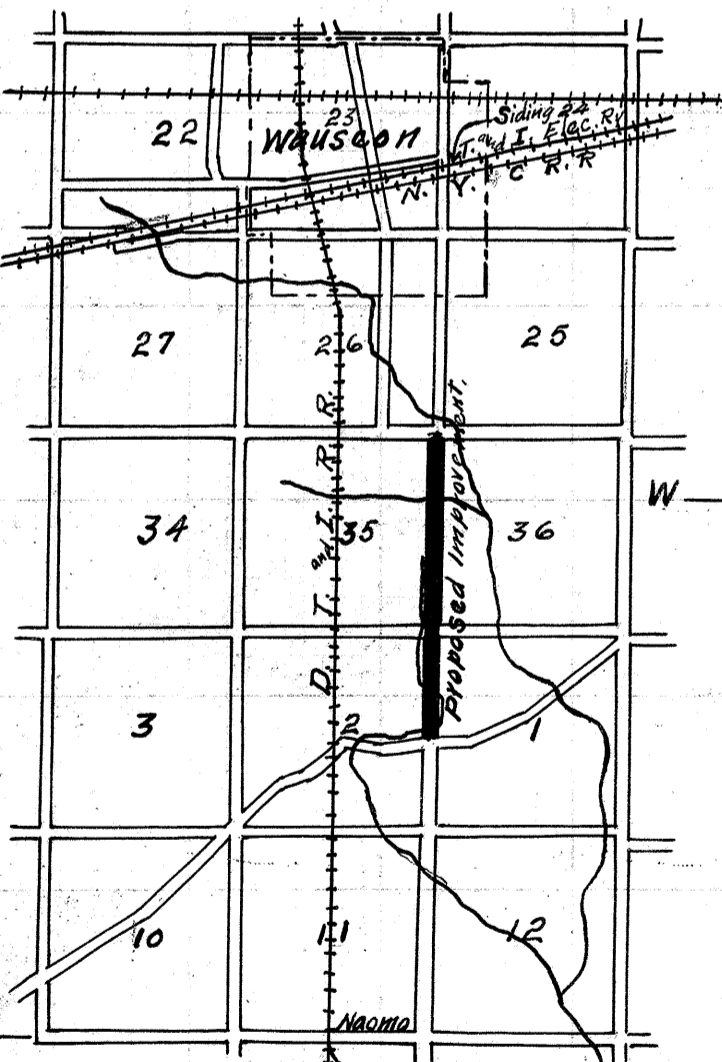
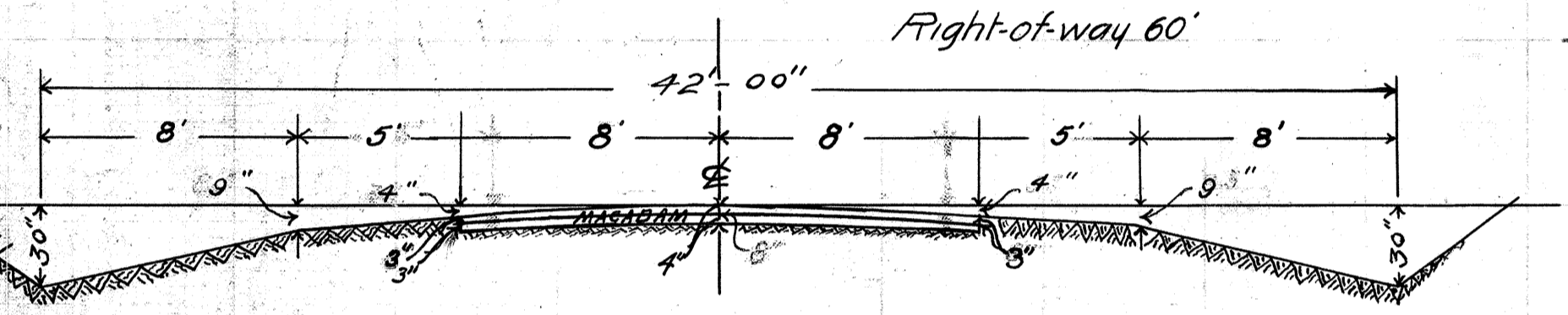
FULTON COUNTY

CLINTON TOWNSHIP

WAUSEON-NAPOLEON ROAD

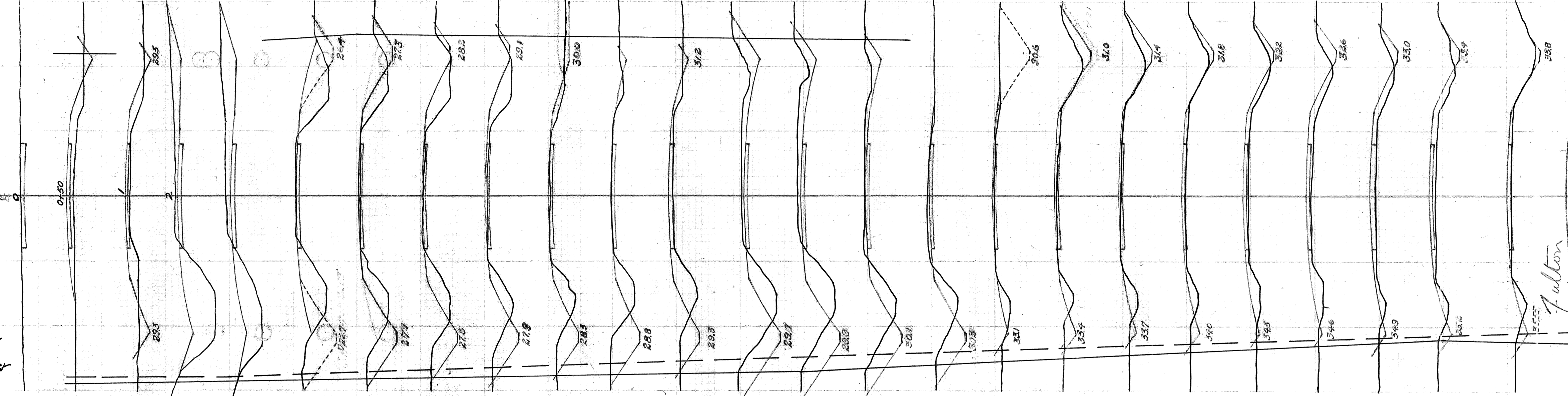
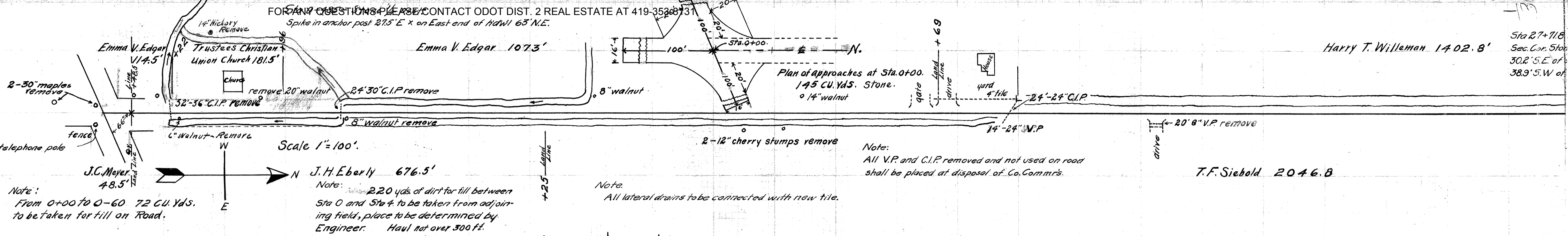
I. C. H. 296 Petition 2357

C. O. Castle, Resident Engineer.



APPROVED: *[Signature]*
State Highway Commissioner.

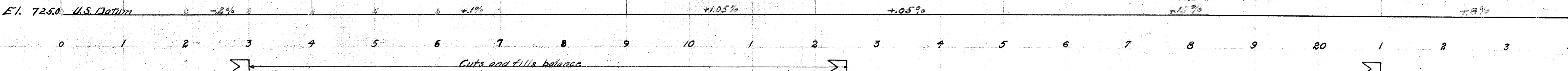
DATE: _____



Note: From Sta 4, an open ditch to be dug about 300' S.W., 560 Cu. Yds. and old ditch S. of church lot to be filled, and surplus dirt to be placed on road grade. There shall be a Retaining Wall built at outlet end of new cut, to be 16' long, 6' high, 20" on bottom and 1' on top. 1:2 1/2 con.

Note: All drain pipe shall be laid to grade. The joints on 10" and 12" tile drain shall be made with heavy tar paper at least 3 inches wide and a 2" layer of dirt or sand into the pipe.

CONSTRUCTION BUREAU
JUN 21 1955
GROUND PHOTO



B.M. on x first step S.E. corner church porch. E.L. 735.61

B.M. Bottom N.E. corner-board of house 60' L of 13+50. Elev. 738.05

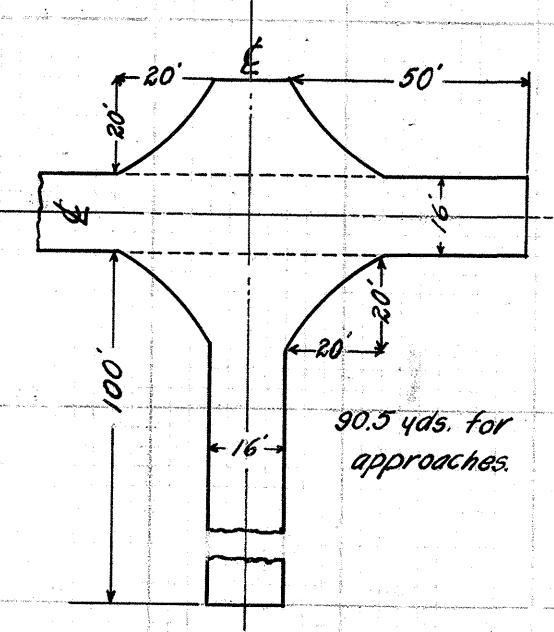
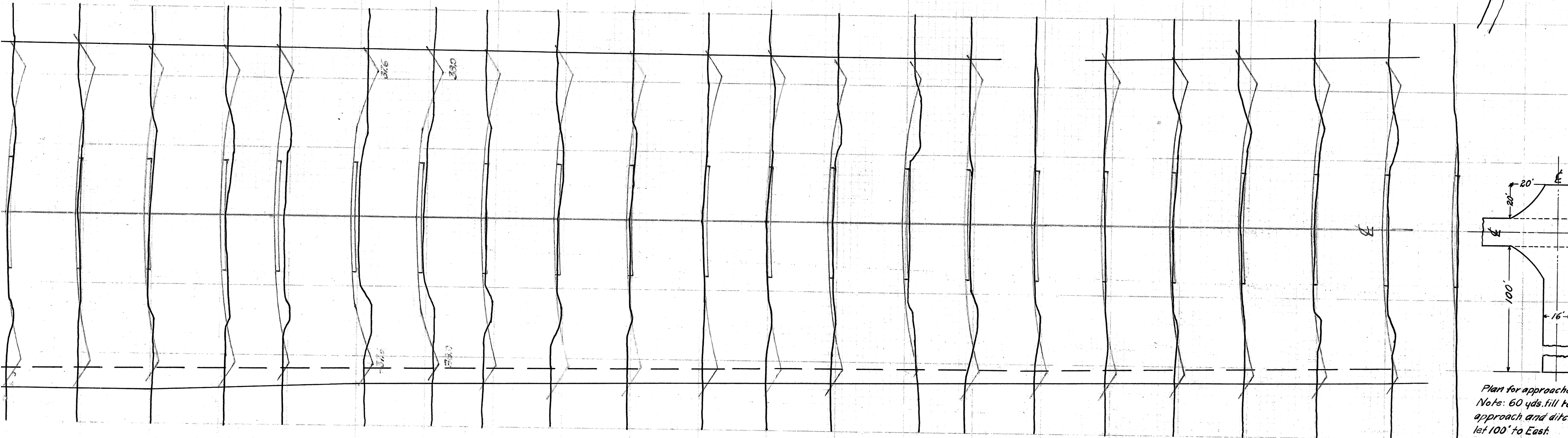
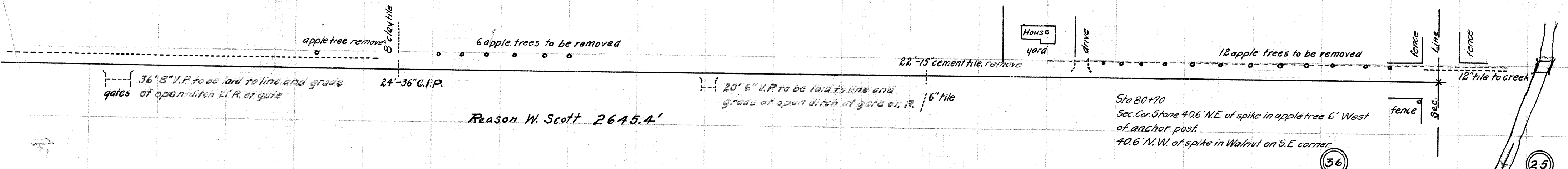
SEC. 4 - WAUSEON - NAPOLEON ROAD I.C.H. No 296 - PETITION 2357 CLINTON TWP. FULTON CO.

File # 452

Laura J. Barnes 2315'

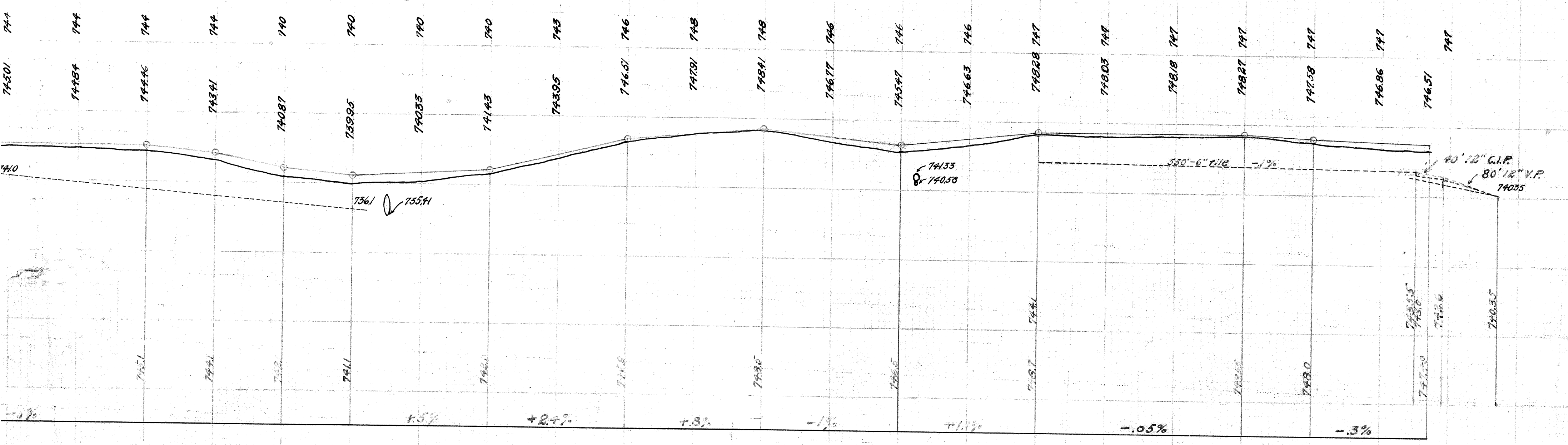
Reason W. Scott 2645.4'

File 525



Plan for approaches at Sta 80+70
 Note: 60 yds. fill to be made on East approach and ditch cleaned for outlet 100' to East.

FULTON CO. - STATE HIGHWAY - A - WAUSEON - NAPOLEON ROAD - No. 296 - FET. No. 2357.



B.M. top of bell West end of pipe 65+50.
 Elev. 738.71

B.M. on X.S.W. corner S.W. wing of bridge 100' N. of Sta 80+70.
 Elev. 743.76
 U.S. B.M. spike in telephone pole N.E. corner.
 Elev. 746.00