

FED. RD. DIVISION	STATE	PROJECT	
2	OHIO	STATE	7

FUL-2 DA- (0.00-0.05)
 FUL-108 - (4.32-4.47)(4.78-5.41)

STATE OF OHIO
 DEPARTMENT OF HIGHWAYS
 FUL-2 DA- (0.00-0.05)
 FUL-108-(4.32-4.47)(4.78-5.41)

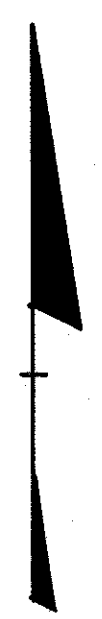
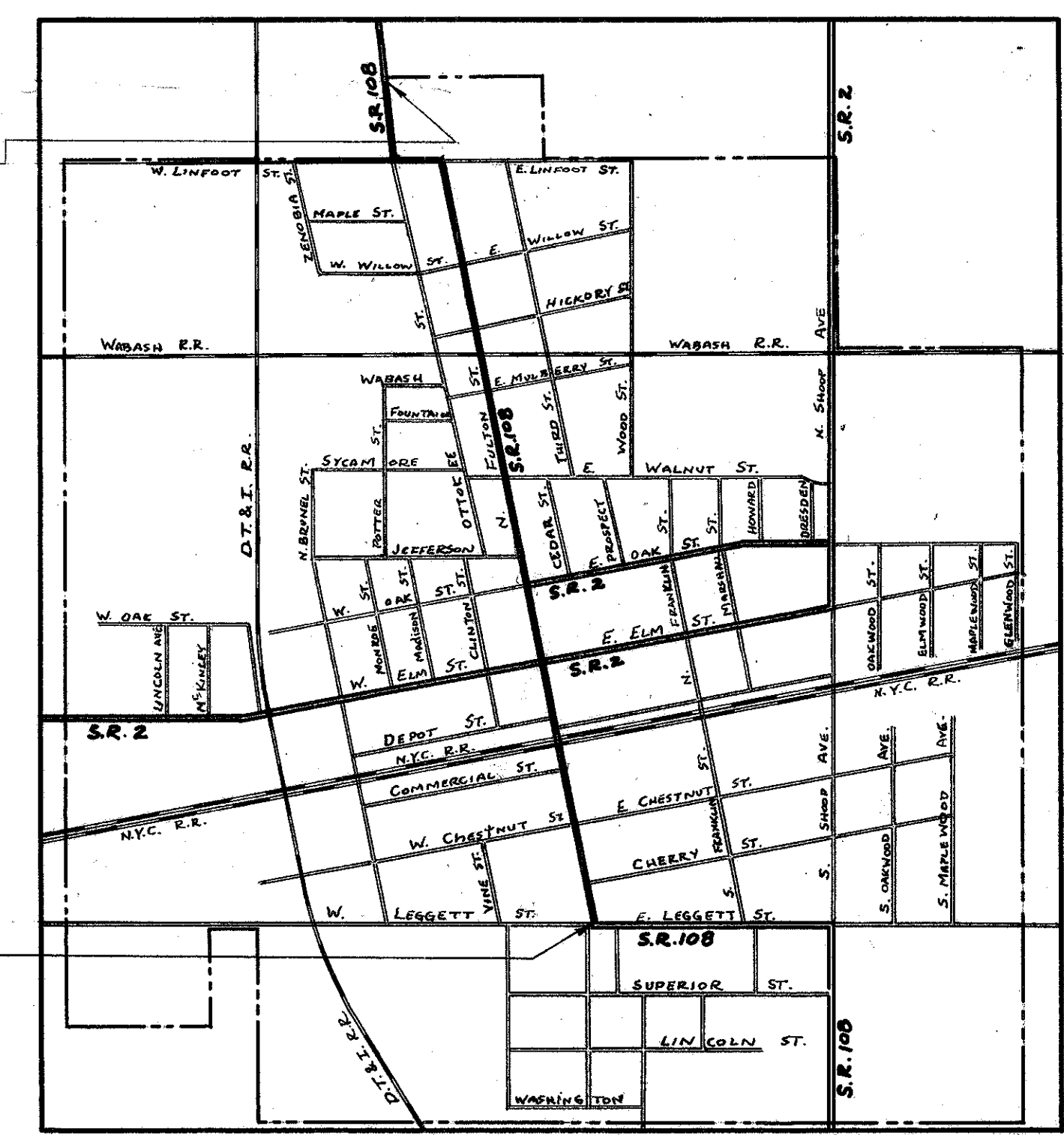
FULTON COUNTY
 VILLAGE OF WAUSEON
 CLINTON TOWNSHIP

CONVENTIONAL SIGNS

COUNTY LINE	-----
TOWNSHIP LINE	-----
SECTION LINE	-----
CORPORATION LINE	-----
FENCE LINE	-x-x-x-x-
CENTER LINE	-----
POLE LINE	⊕ ⊕ ⊕ ⊕ ⊕ ⊕ ⊕
RAILROAD	=====
GUARD RAIL	o o o o o o o o o

End Work
Sta. 290+92.8
End Project
Sta. 290+92.8

Begin Project
Sta. 228+51
Begin Work
Sta. 228+26



The Standard Specification of The State of Ohio Department of Highways, including changes and Supplemental Specifications listed in the proposal shall govern this improvement.

I hereby approve these plans and declare that the making of this improvement will not require the closing to traffic of the highway, and that provisions for maintenance and safety of traffic will be as set forth in these plans and estimates.

The right of way for this improvement will be provided by The State of Ohio.

Approved George W. Rubin
 Date June 30, 1955 Division Deputy Director
 Approved John J. Decker
 Date 7-15-55 Deputy Director of Planning & Programming
 Approved W. J. [Signature]
 Date 7-18-55 Engineer of Location & Design
 Approved W. J. [Signature]
 Date 7-12-55 Engineer of Bridges
 Approved _____
 Date _____ Deputy Director of Design & Construction
 Approved W. J. [Signature]
 Date 7-15-55 First Assistant Director
 Approved W. J. [Signature]
 Date 7-18-55 Director of Highways
 Print Approved R.C. Summers
 Date 7/1/55 Vice Mayor of Wauseon

INDEX OF SHEETS

TITLE SHEET	1.
TYPICAL SECTION	2-3
GENERAL NOTES	7
PAVEMENT COMPUTATIONS	3
GENERAL SUMMARY	2
PLAN & PROFILE	4-7

LINE DATA

BEGIN PROJECT	Sta. 228+51
END PROJECT	Sta. 290+92.8
GROSS LENGTH	6241.8 Lin. Ft.
DEDUCT FOR N.Y.C. & WABASH RAILROADS	71 Lin. Ft.
NET LENGTH	= 6241.8 - 71 = 6170.8 Lin. Ft. = 1.168 Mi.
BEGIN WORK	STA. 228+26
END WORK	STA. 290+92.8
GROSS LENGTH WORK	6266.8 Lin. Ft.
NET LENGTH WORK	6266.8 - 71 = 6195.8 Lin. Ft. = 1.173 miles

LOCATION PLAN

SCALE	1"=1000'
PORTION TO BE IMPROVED	===== PLAN
STATE HIGHWAYS	===== PROFILE - HORIZONTAL
OTHER ROADS	===== PROFILE - VERTICAL
DETOURS	NONE

SCALES

1" = 20'
 1" = 20'
 1" = 5'

DELIVERY POINT: WAUSEON AVERAGE HAUL: 0.25 MI.

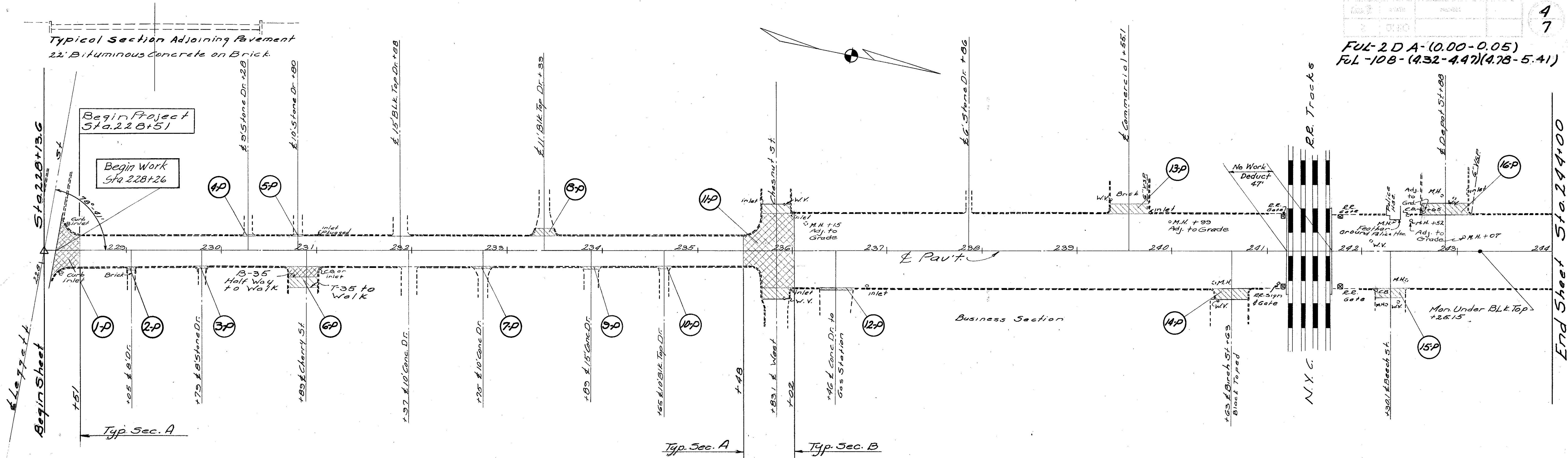
SUPPLEMENTAL SPECIFICATIONS

STANDARD DRAWINGS

7-35	10-1-52		

FILE No.	FULTON COUNTY
Sec.	FUL-2 DA- (0.00-0.05) & FUL-108 - (4.32-4.47)(4.78-5.41)
Date of Letting	
Contract No.	

CONSTRUCTION BUREAU
 APR 17 1959
 GROUND PHOTOLAB



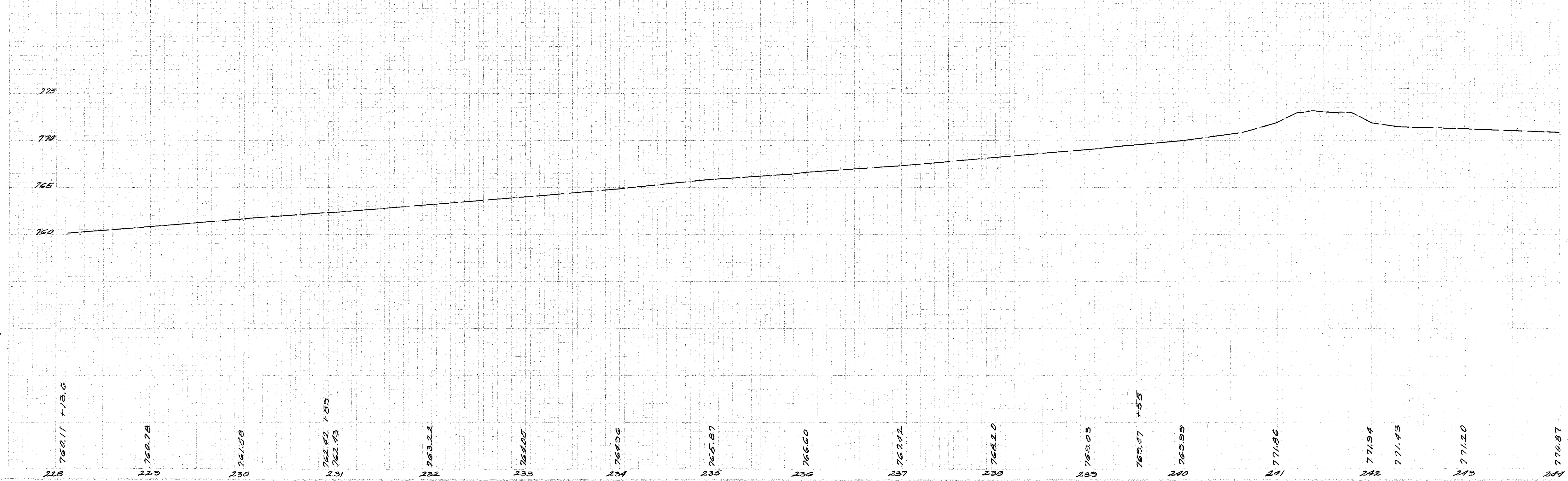
B.M. Sta. 228+36
Spk. in P. Pole 21' Rt.
EL. 760.54

Denotes T-35 Only
Denotes B-35 & T-35

B.M. Sta. 234+73
on N.E. Cor. Conc.
Statue Base EL. 767.85

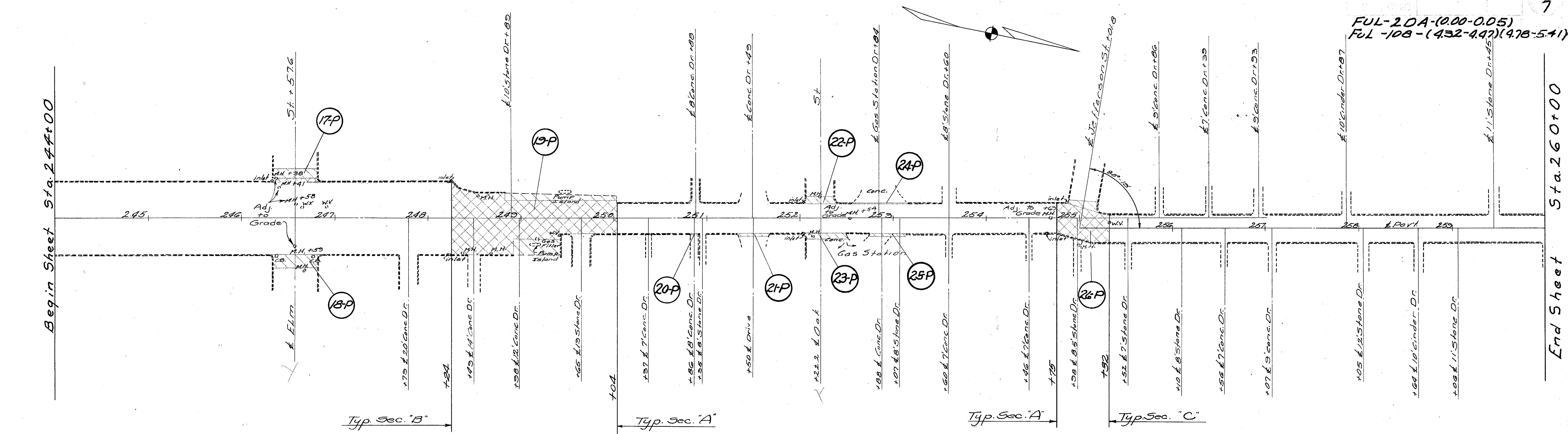
B.M. Sta. 240+04
W. Bolt on Base of
Fire Hyd. 41' Lt. EL. 769.53

B.M. Sta. 242+61
X on
S.E. Cor. 1st. Step to Realtors
Office 54' Rt. EL. 771.33



Begin Sheet Sta. 244+00

End Sheet Sta. 260+00

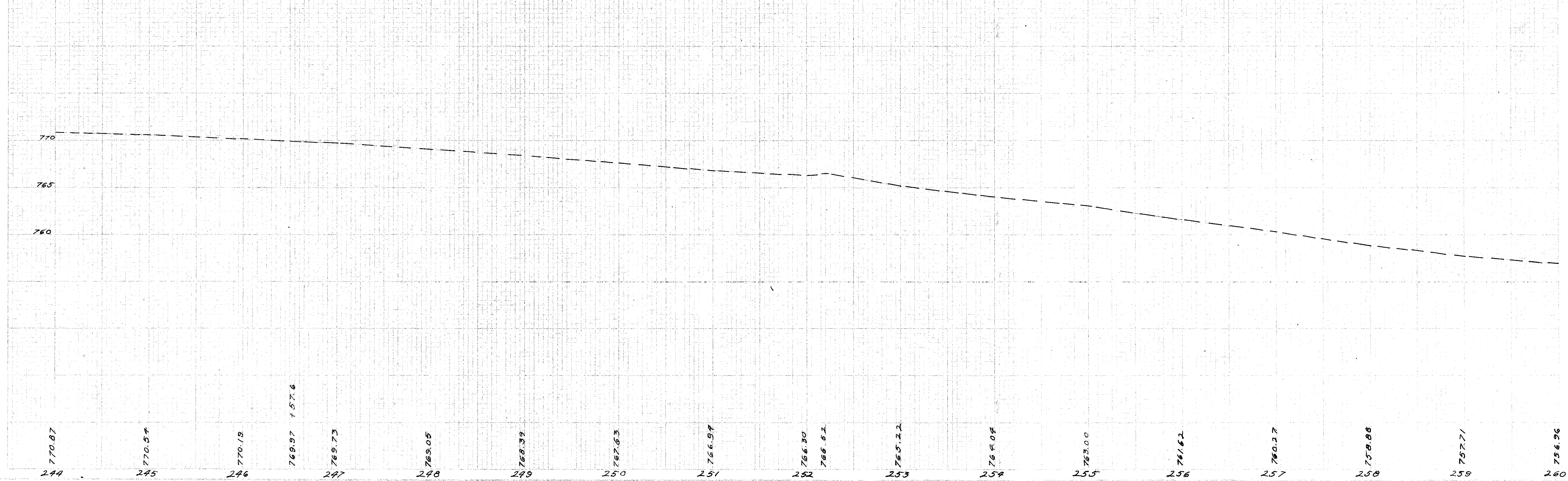


B.M. Sta. 245+85 "B"
on N.E. Cor. Water Table of
Shoe Repair 56' Lt. EL. 72.30

B.M. Sta. 249+39 "B" on N.W.
Cor. of Long Conc. Slab of 224
Fulton St. Car Dealer 49' Lt. EL. 76.89

B.M. Sta. 252+03
Spt. in P. Pole 22' Rt.
EL. 76.82

B.M. Sta. 256+35
Spt. in 30' Maple 27' Rt.
EL. 76.62



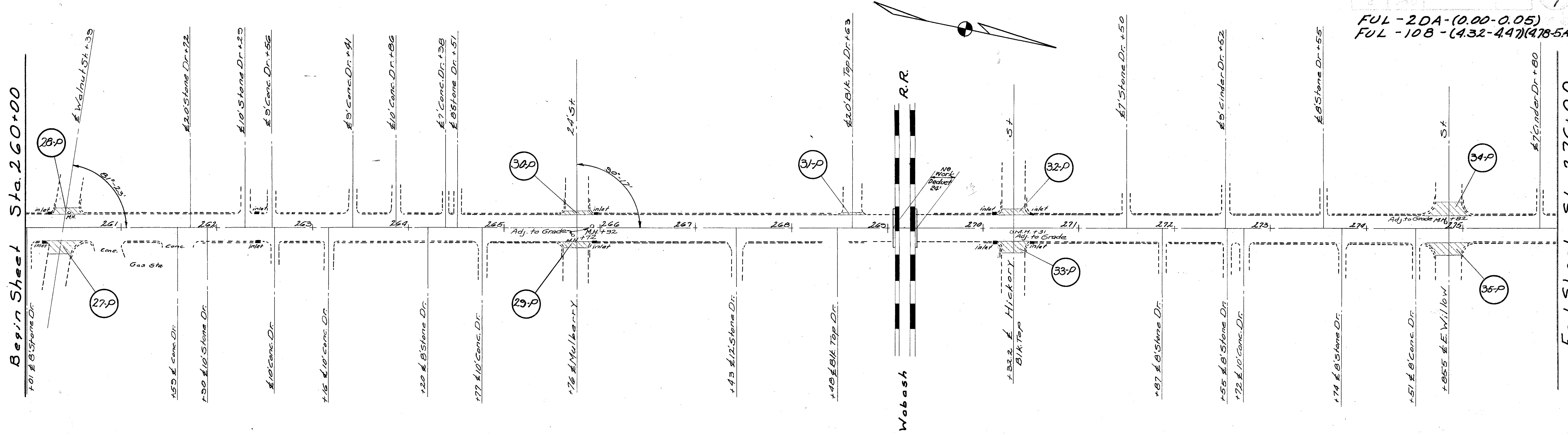
Sta. 244+00 To Sta. 260+00

FUL - 2DA - (0.00 - 0.05)
FUL - 10B - (4.32 - 4.47) (478-5A1)

6
7

Begin Sheet Sta. 260+00

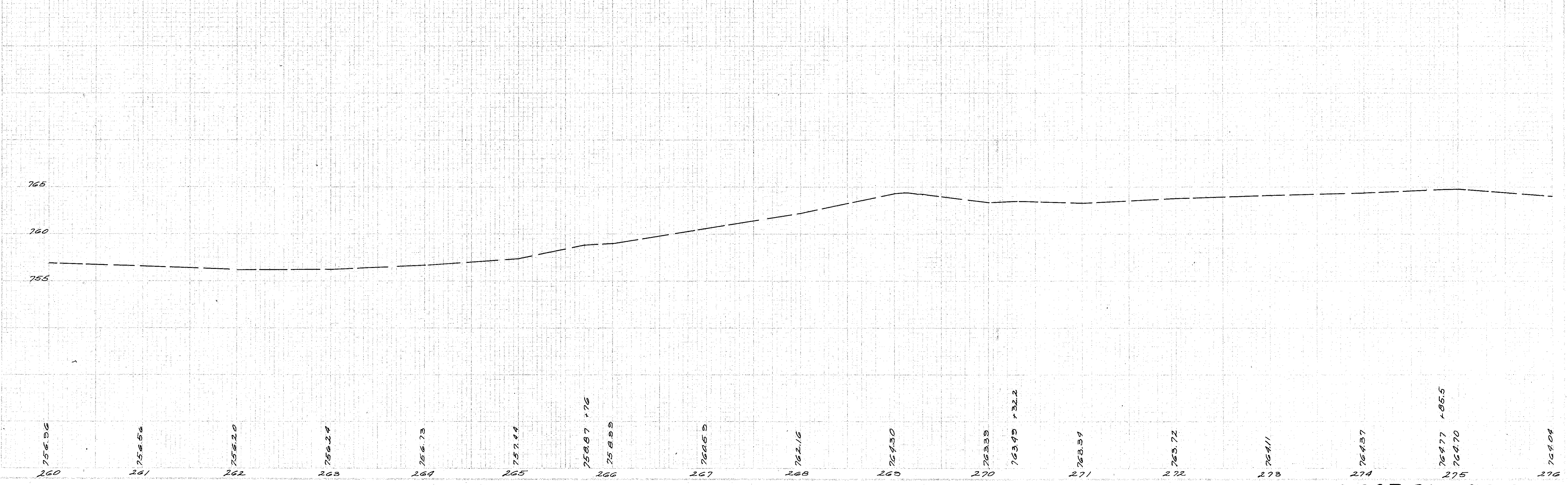
End Sheet Sta. 276+00



B.M. Sta. 262+98.5pk
in 22' Maple 25' Rt.
EL. 756.73

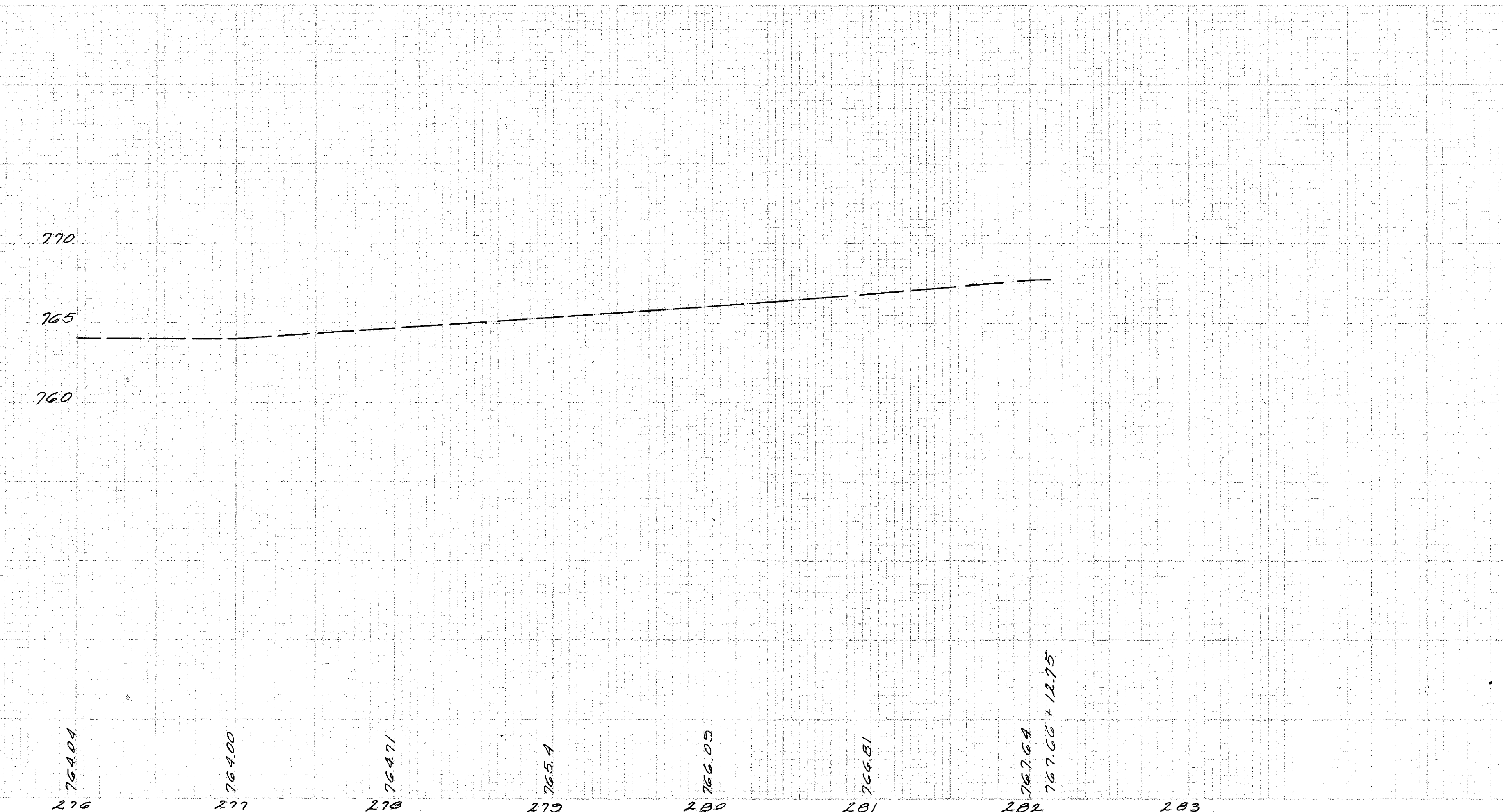
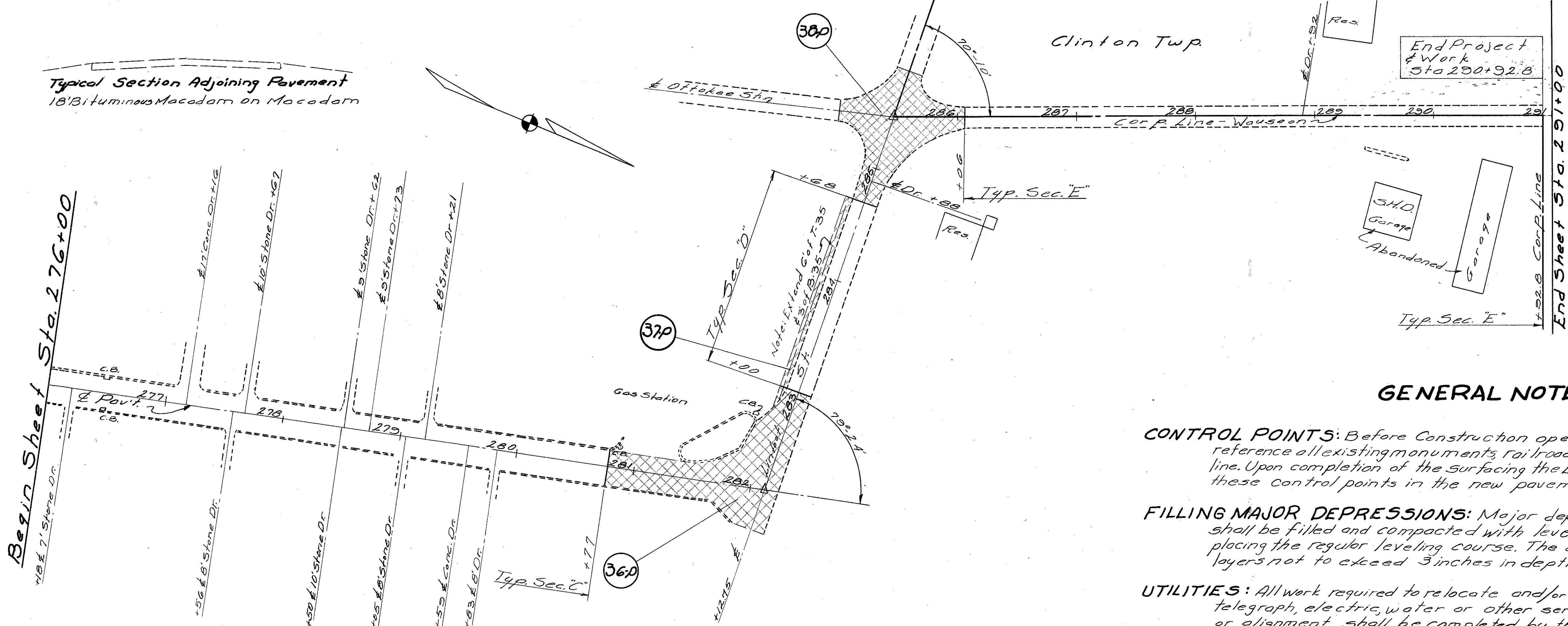
B.M. Sta. 268+64.5pk
in T. Pole 15' Rt.
EL. 763.73

B.M. Sta. 275+08
5pk in P.P. 17' Rt.
EL. 765.73



Sta. 260+00 To Sta. 276+00

FUL-2DA-(000-0.05)
FUL-108-(4.32-4.47)(4.78-5.41)



GENERAL NOTES

- CONTROL POINTS:** Before Construction operations begin the Engineer will reference all existing monuments, railroad spikes, iron bolts, etc. in survey line. Upon completion of the Surfacing the Engineer will re-establish all these control points in the new pavement.
- FILLING MAJOR DEPRESSIONS:** Major depressions in existing pavement shall be filled and compacted with leveling material in advance of placing the regular leveling course. The depressions shall be filled in layers not to exceed 3 inches in depth when compacted.
- UTILITIES:** All work required to relocate and/or adjust, etc. all gas, oil, telephone, telegraph, electric, water or other services to conform to the new grade or alignment shall be completed by the utilities in question.
- RAILROAD CROSSINGS** The new surface shall be feathered to meet the rail grades if necessary.
- PROFILE GRADE:** The Profile of the proposed surface shall be approximately 2 1/4 inches above that of the existing pavement.
- EXISTING CATCH BASINS:** The surface and leveling courses shall be feathered to meet the grade of existing catch basin castings unless otherwise shown.
- TRAFFIC:** Traffic shall be maintained at all times. The length of one-way traffic zones shall be kept to a minimum consistent with the specification requirements for protection of wearing course.
- UTILITY OWNERSHIP:**
Electric Power - Toledo Edison Co. Toledo
Telephone - Northwestern Telephone, Napoleon
Gas - Ohio Gas Co., Bryan
Water - Village of Wauseon
- ITEM E-8:** An estimated quantity of 2000 sq. yds. of wearing course removal is carried in the General Summary for areas where the existing wearing course is in such condition that it will need to be removed. Locations of these areas shall be determined by the Engineer.