

FED. RD. DIST. NO.	STATE	PROJECT	FISCAL YEAR
	OHIO		1945

FULTON COUNTY

S. H. 20 SEC. WAUSEON (Pt.), M. A (Pt.)

# STATE OF OHIO DEPARTMENT OF HIGHWAYS

## TOLEDO-WAUSEON ROAD

### S. H. 20 SEC. WAUSEON (Pt.), M. A (Pt.) FULTON COUNTY CLINTON TOWNSHIP AND VILLAGE OF WAUSEON

**CONVENTIONAL SIGNS**

STATE LINE	-----
COUNTY LINE	-----
TOWNSHIP LINE	-----
SECTION LINE	-----
CENTER LINE	-----
PROPERTY LINE	-----
CITY OR VILLAGE LINE	-----
FENCE LINE	-----
STEAM RAILROAD	-----
POLE LINE	⚡ Telephone ⚡ Power
GUARD RAIL	-----
DRAIN PIPE, NEW	-----
DRAIN PIPE, OLD	-----

**INDEX OF SHEETS**

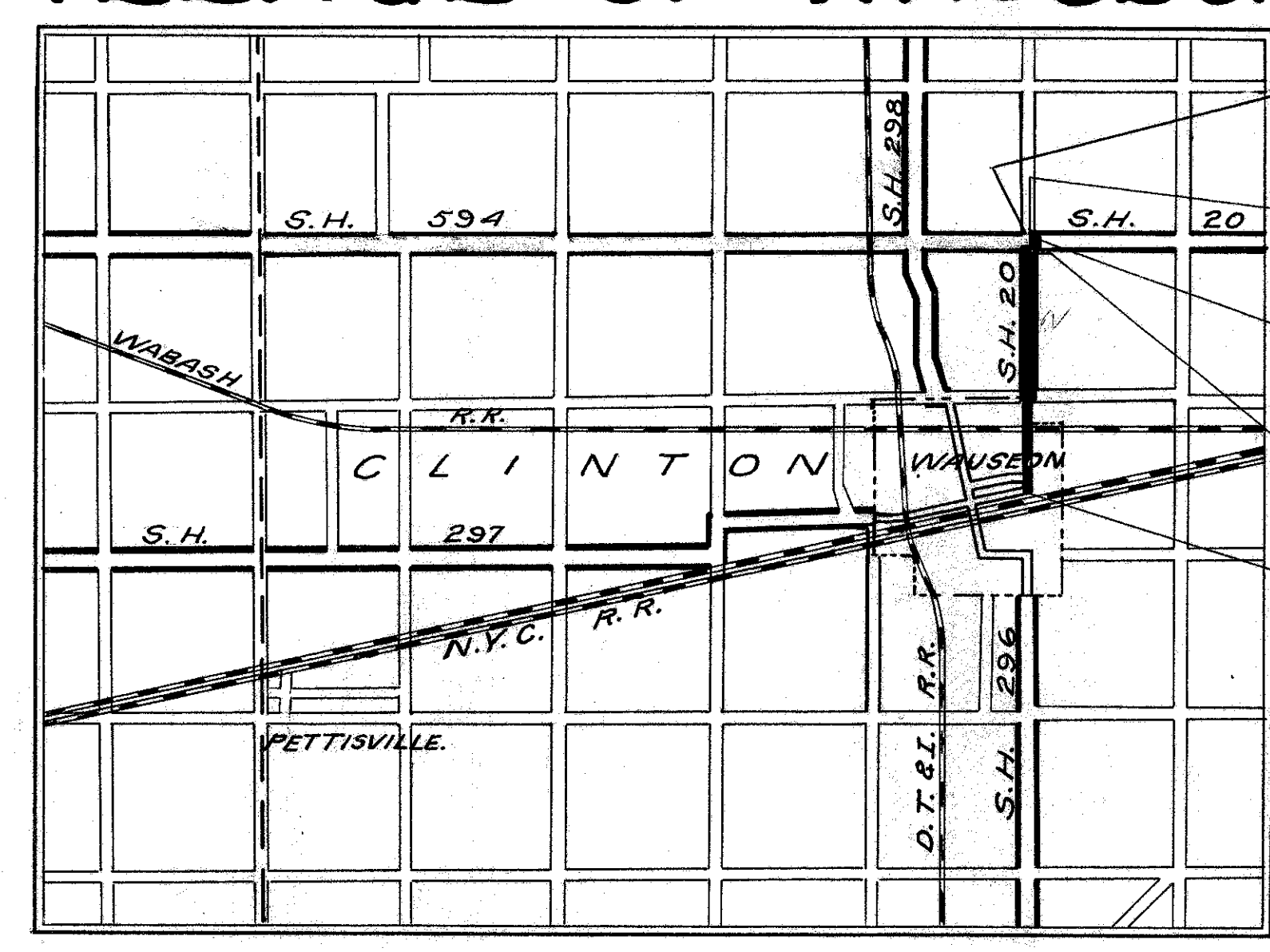
TITLE SHEET	Sheet 1
TYPICAL SECTION	2
PLAN & PROFILE	3 - 8
GENERAL NOTES	9
MONUMENT DETAILS	9
APPROACH DETAILS	10
SUMMARIES, GENERAL SUMMARY	10

**LINE DATA**

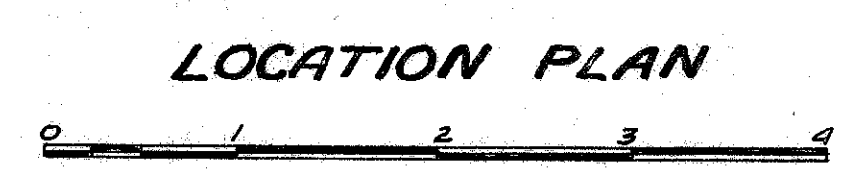
Begin Sec. Wauseon (Pt.) & Project Sta 0 - 31.9  
 End Sec Wauseon (Pt.) Sta 31+35.43  
 Gross Length = 3167.33 Lin. Ft.  
 Deduction for Railroad  
 Sta 17+96.0 to Sta 18+20.5 = 24.5 Lin. Ft.  
 Sec. Wauseon (Pt.) Net Length = 3142.83 Lin. Ft. or 0.595 Mi.  
 Begin Sec. M Sta. 31+35.43  
 End Sec. M Sta 84+40  
 Sec. M Gross Length - Net Length = 5304.57 Lin. Ft. or 1.005 Mi.  
 Begin Sec. "A" (Pt.) Sta 1+68  
 End Project & Sec. A (Pt.) Sta 6+72.1  
 Sec. A (Pt.) Gross Length = Net Length = 504.1 Lin. Ft. or 0.095 Mi.  
 Net Length of Rural = 5808.67 Lin. Ft.  
 or 1.100 Mi.  
 Net Length of Project = 8951.50 Lin. Ft.  
 or 1.695 Mi.

**STANDARD DRAWINGS**

G-7.07	6-1-42



Delivery Point, Wauseon Average Haul 1 Miles



Portion to be improved  
 State Highways  
 Improved County Roads

**SCALES**

PLAN 1" = 150'  
 PROFILE, HORIZONTAL 1" = 50'  
 PROFILE, VERTICAL 1" = 5'

End Sec "M"  
Sta 84+40

Begin Sec "A" (Pt.)  
Sta 1+68

End Project  
S.H. 20 Sec A (Pt.)  
Sta 6+72.1

End Sec. Wauseon (Pt.)  
Begin Sec. "M"  
Sta 31+35.43

Begin Project  
S.H. 20 Sec. Wauseon (Pt.)  
Sta 0-31.9

The Standard Specifications of the State of Ohio, Department of Highways, including changes and Supplemental Specifications listed in the proposal shall govern this improvement.

I hereby approve these plans and declare that the making of this improvement will not require the closing to traffic of the highway and that provisions for the maintenance and safety of traffic will be as set forth on the plans and estimates.

The right of way necessary for this improvement will be provided by the State of Ohio.

Approved: Amel W. Fisher  
 Date 7/20/45 Resident Division Deputy Director

Approved: \_\_\_\_\_  
 Date \_\_\_\_\_ Chief Engineer, Bureau of Maintenance.

Approved: \_\_\_\_\_  
 Date \_\_\_\_\_ Chief Engineer, Bureau of Bridges & R.R. Crossings.

Approved: Murray D. Slifky  
 Date 8/20/45 Chief Engineer, Bureau of Location & Design

Approved: Ellis W. Elliott  
 Date 8-20-45 First Assistant Director & Chief Engineer.

Approved: Perry T. Ford  
 Date 8-20-45 Director of Highways.

**SUPPLEMENTAL SPECIFICATIONS**

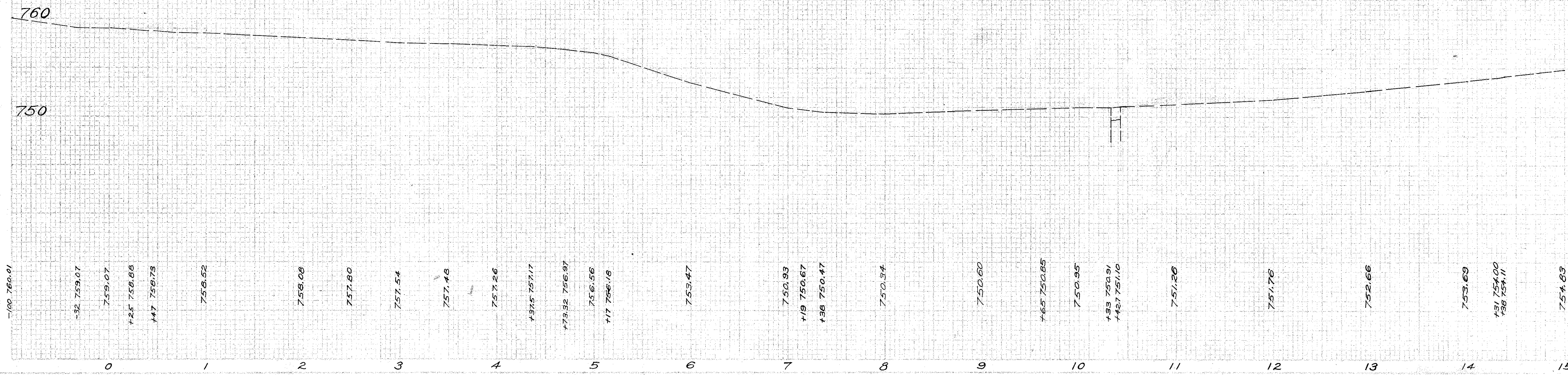
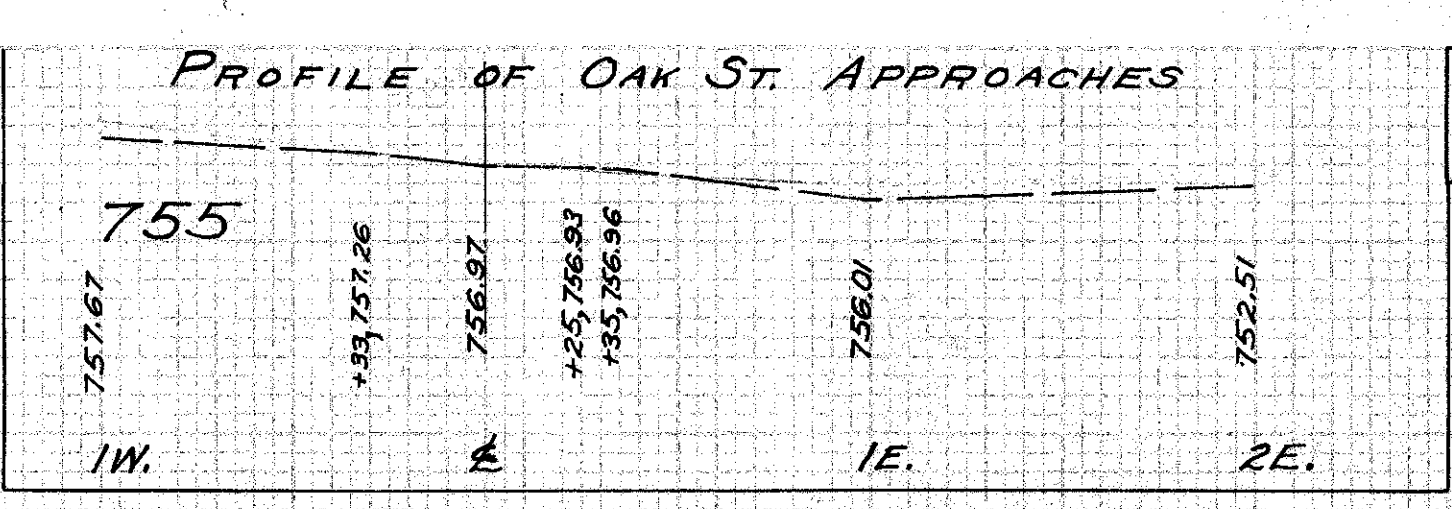
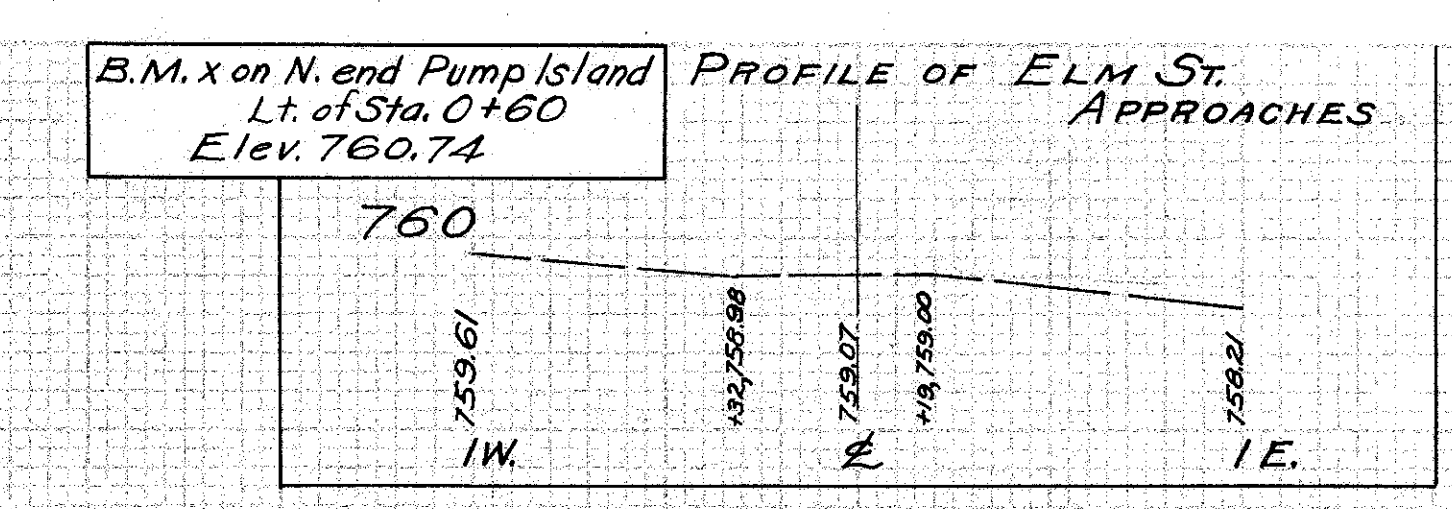
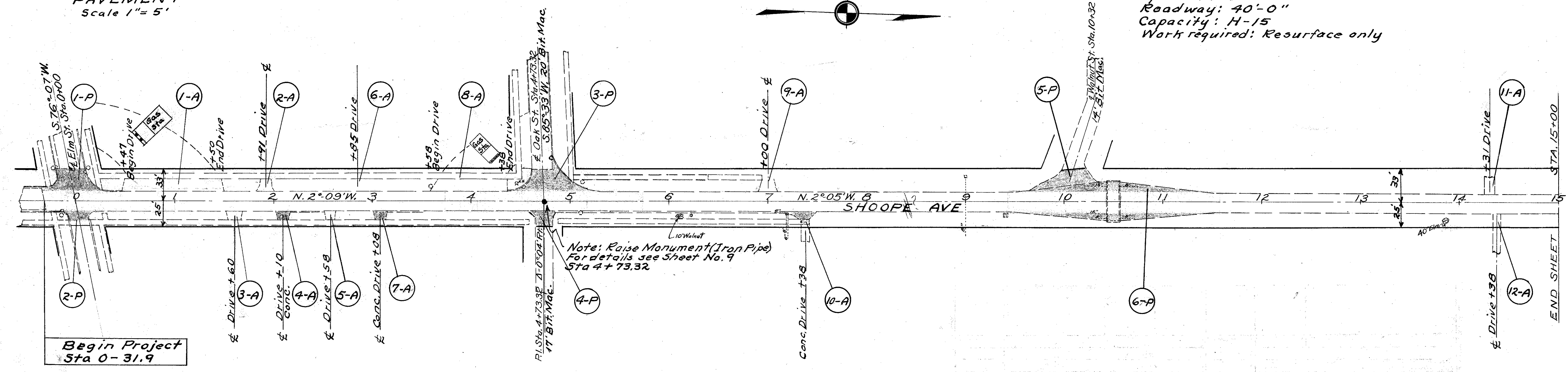
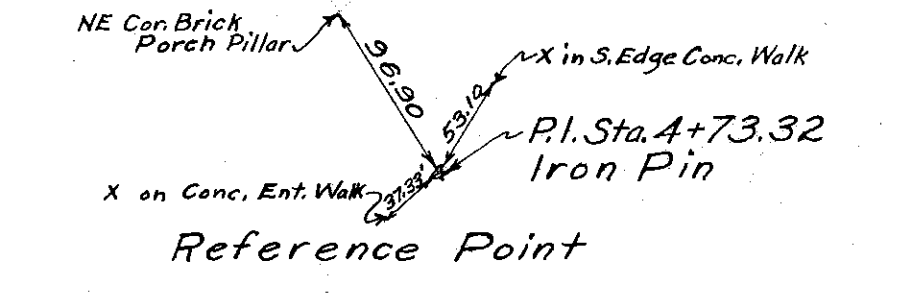
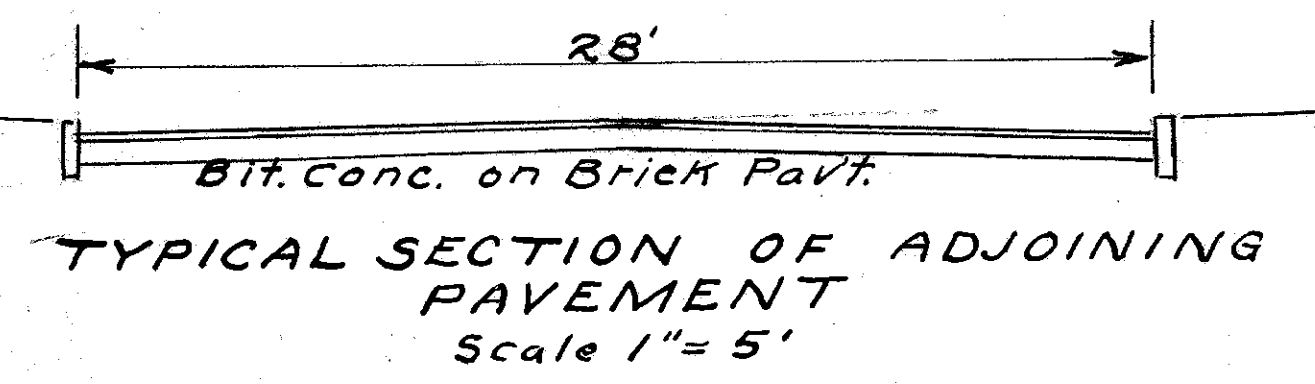
I-117	1-15-44

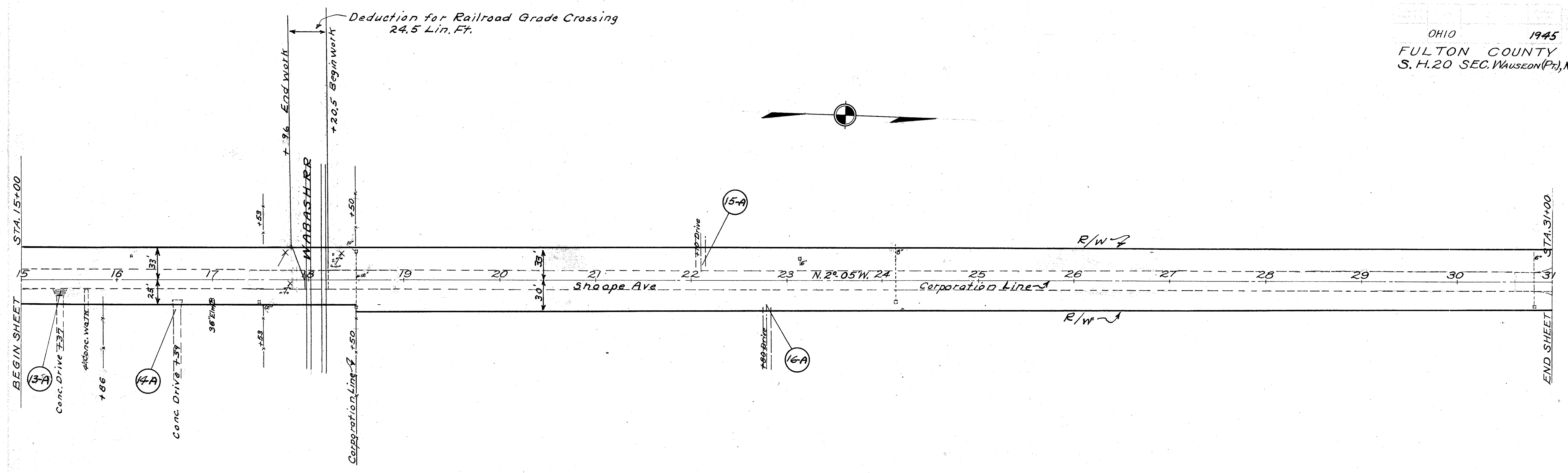
FILE No.	FULTON COUNTY, S. H. 20, SEC. WAUSEON (Pt.), M. A (Pt.)
DATE OF LETTING	-----
CONTRACT No.	-----

CONSTRUCTION BUREAU  
 JUN 21 1955  
 GROUND PHOTOLAB

PROJECT NO.	STATE	PROJECT	POSTAL YEAR	3
	OHIO		1945	10

**DATA ON EXISTING STRUCTURE**  
 Bridge No. Fu-2-147  
 Sta 10+50  
 Type: Reinf. Concrete Slab  
 Span: 12'-0"  
 Roadway: 40'-0"  
 Capacity: H-15  
 Work required: Resurface only

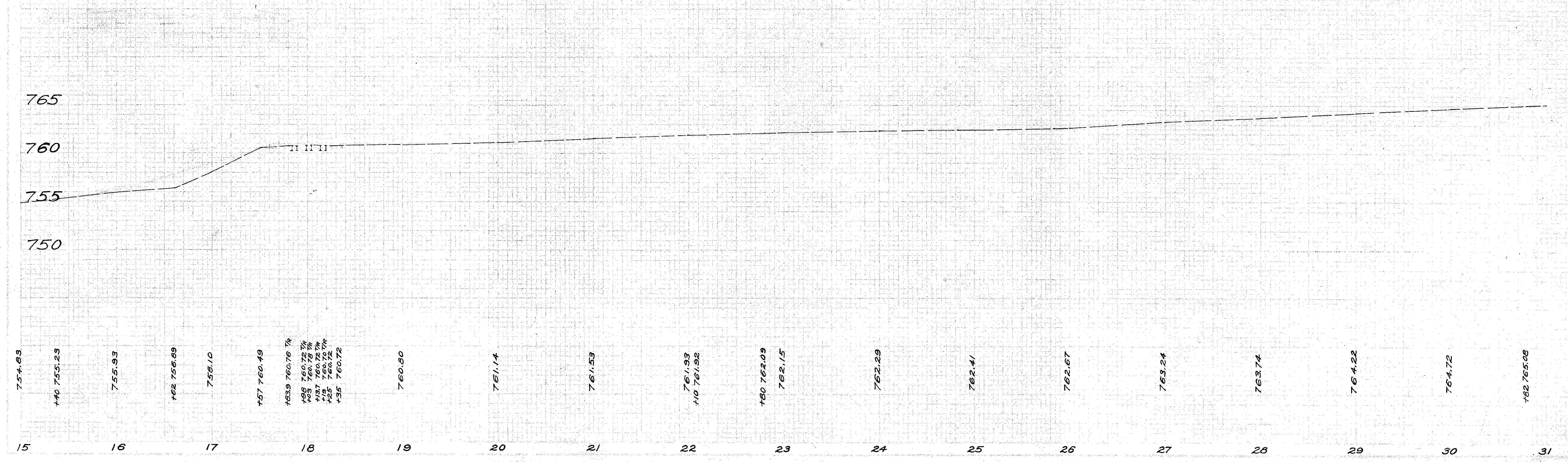




FOR ANY QUESTIONS PLEASE CONTACT ODOT DIST. 2 REAL ESTATE AT 419-353-8131

B.M. RR. spike in Power Pole  
 Pt. of Sta. 15+87  
 Elev. 756.30

B.M. RR. spike in Power Pole  
 26' Pt. of Sta. 29+61  
 Elev. 762.74

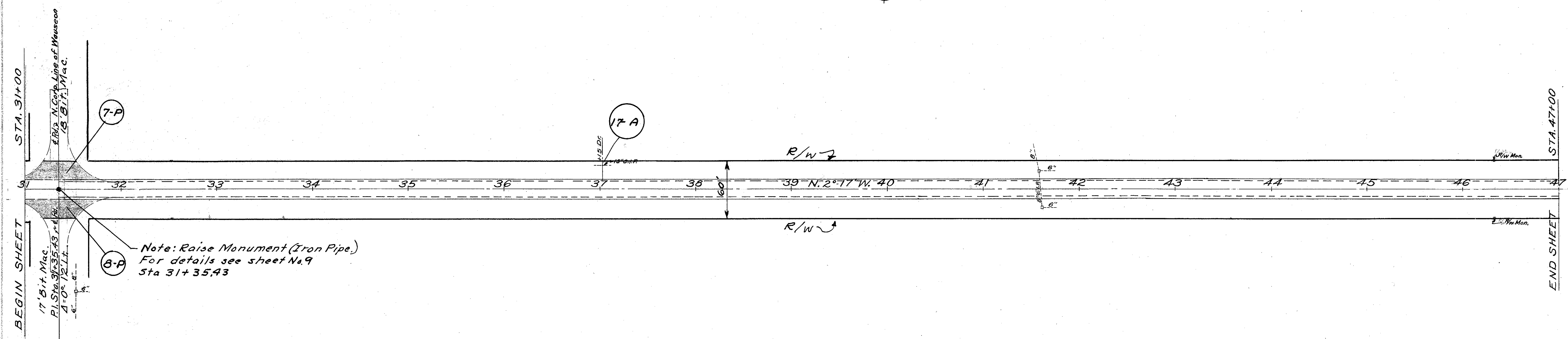
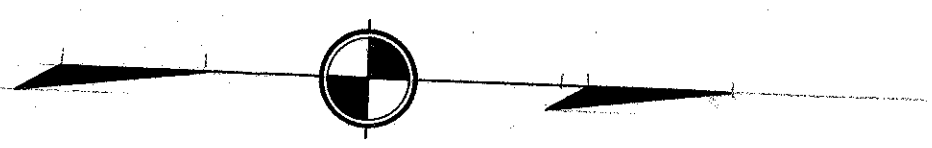


REC. BY	DATE	ISSUED	SHEET NO.
OHIO		1945	5

FULTON COUNTY  
S.H. 20 SEC. WAUSEON (Pt), M, A (Pt)

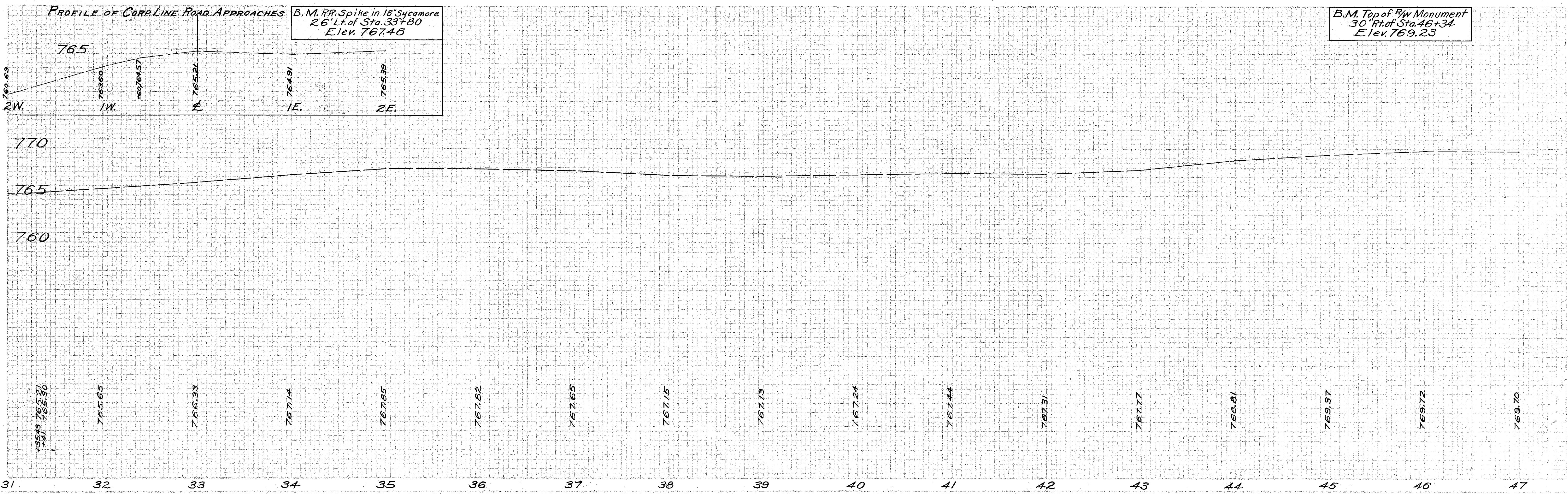
Sec. Cor.  
P.I. Sta. 31+35.43  
 $\Delta = 0^\circ 12' Lt$

Reference Point



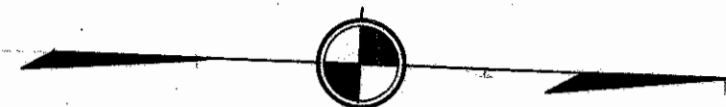
Note: Raise Monument (Iron Pipe.)  
For details see sheet No. 9  
Sta 31+35.43

End Sec. Wauseon (Pt.)  
Begin Sec. M  
Sta 31+35.43

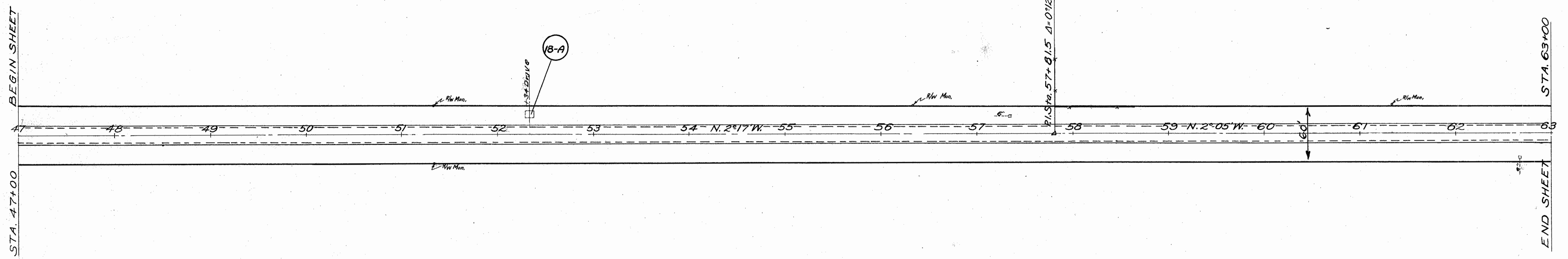


REG. NO.	STATE	ENGINEER	DATE	PAGE
	OHIO		1945	6
				10

FULTON COUNTY  
S.H. 20 SEC. WAUSEON (Pt, M, A (Pt))

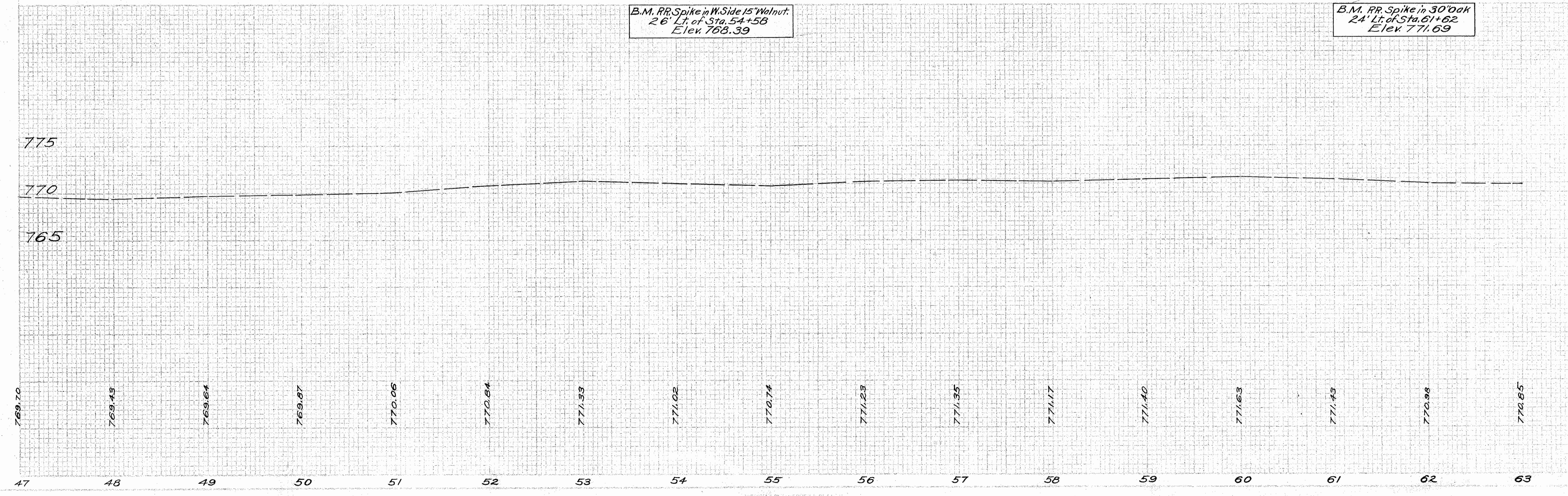


10' Elm  
12" Wild Cherry  
Lead Plug Sta. 57+81.5  
Reference Point



B.M. RR. Spike in W. Side 15' Walnut.  
26' Lt. of Sta. 54+58  
Elev. 768.39

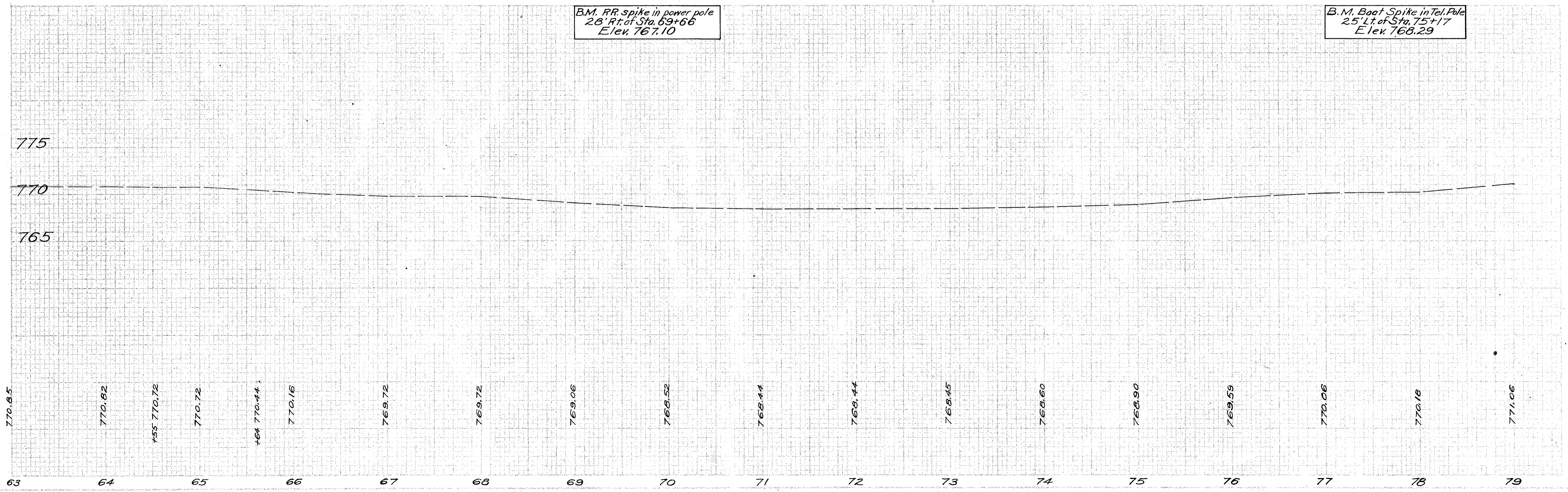
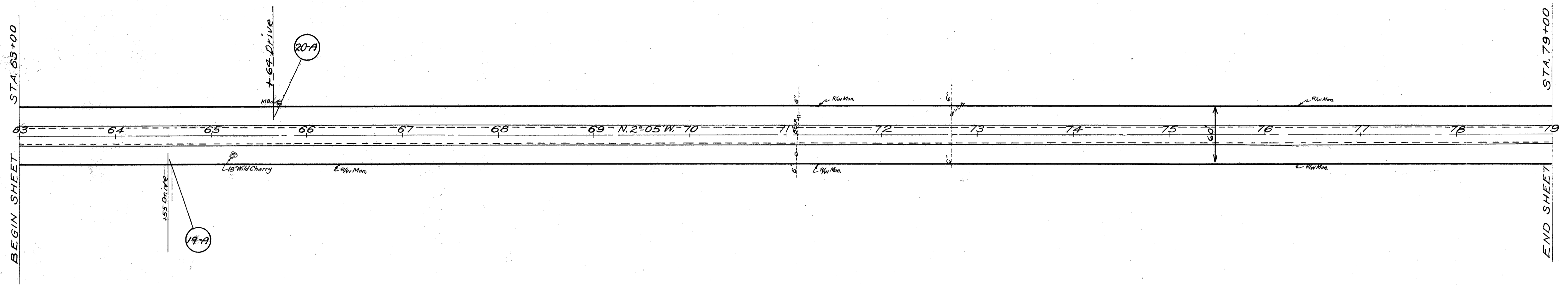
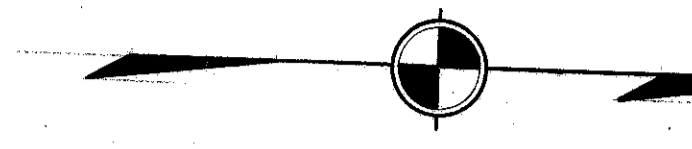
B.M. RR. Spike in 30' Oak  
24' Lt. of Sta. 61+62  
Elev. 771.69

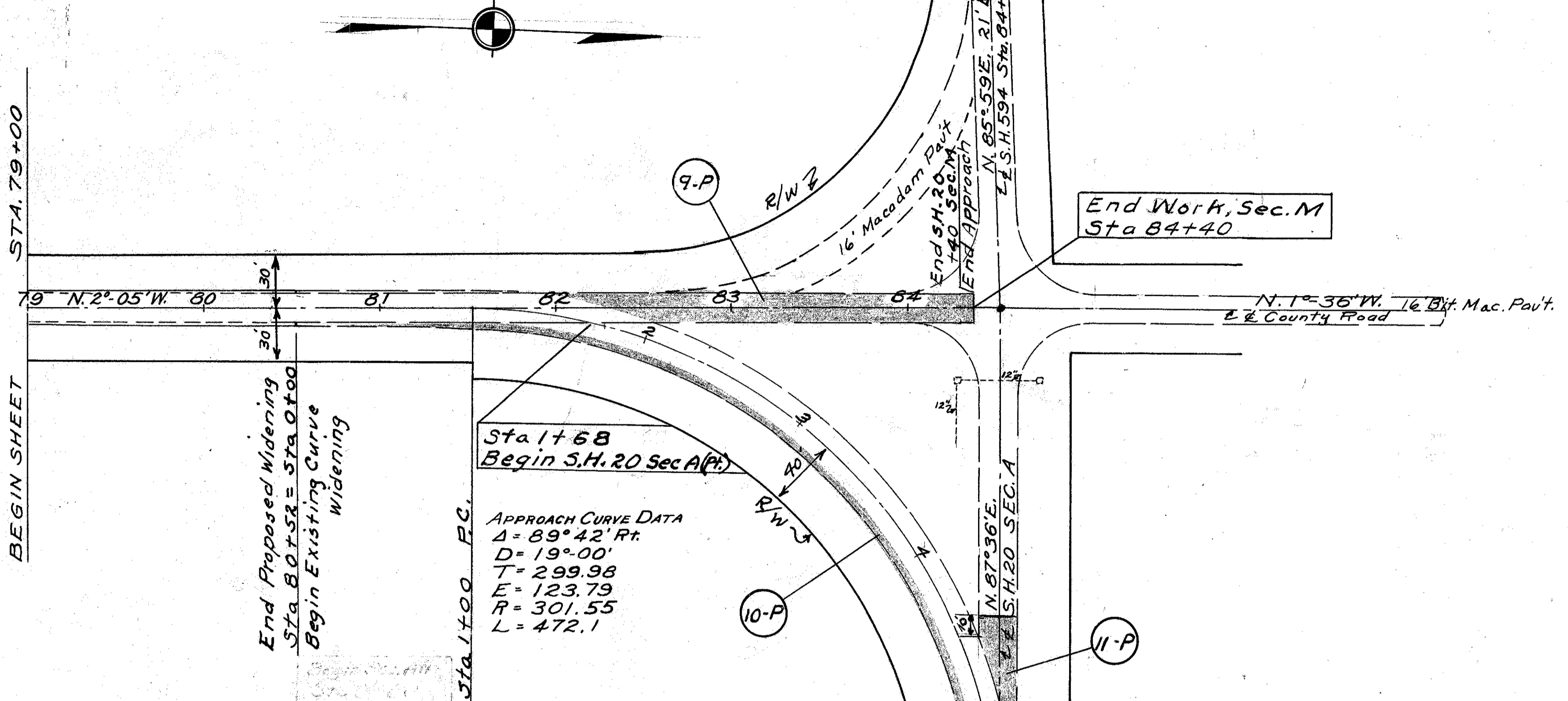
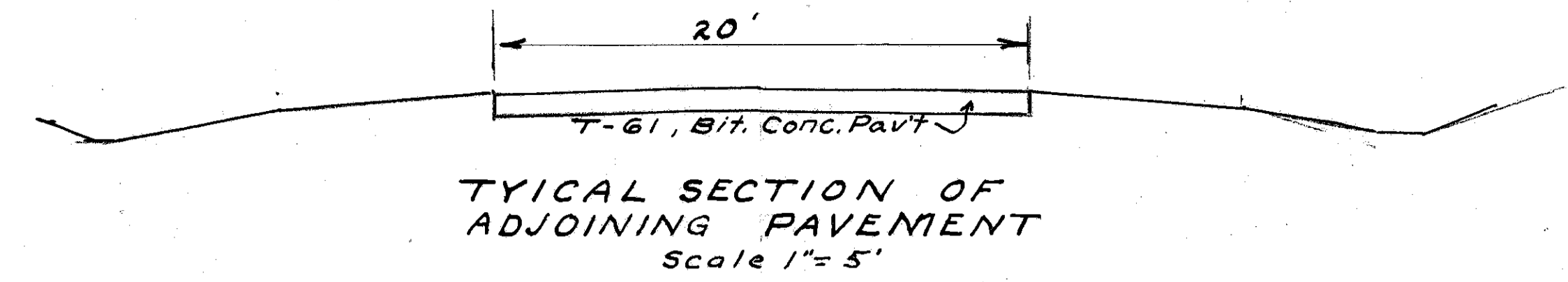


PLAT NO.	STATE	PROJECT	SCALE
	OHIO		

7  
10

FULTON COUNTY  
S.H. 20 SEC. WAUSEON (Pt), M, A (Pt)





B.M. RR Spike in 24" Maple  
22' Rt. of Sta. 79+81  
Elev. 770.88

B.M. Boat Spike in 12" Walnut  
Lt. of Sta. 85+69  
Elev. 772.12

