

PROPERTY MAP

0 100 200 300
SCALE IN FEET

SECTIONS 11, and 14, T7N, R6E
CLINTON TOWNSHIP

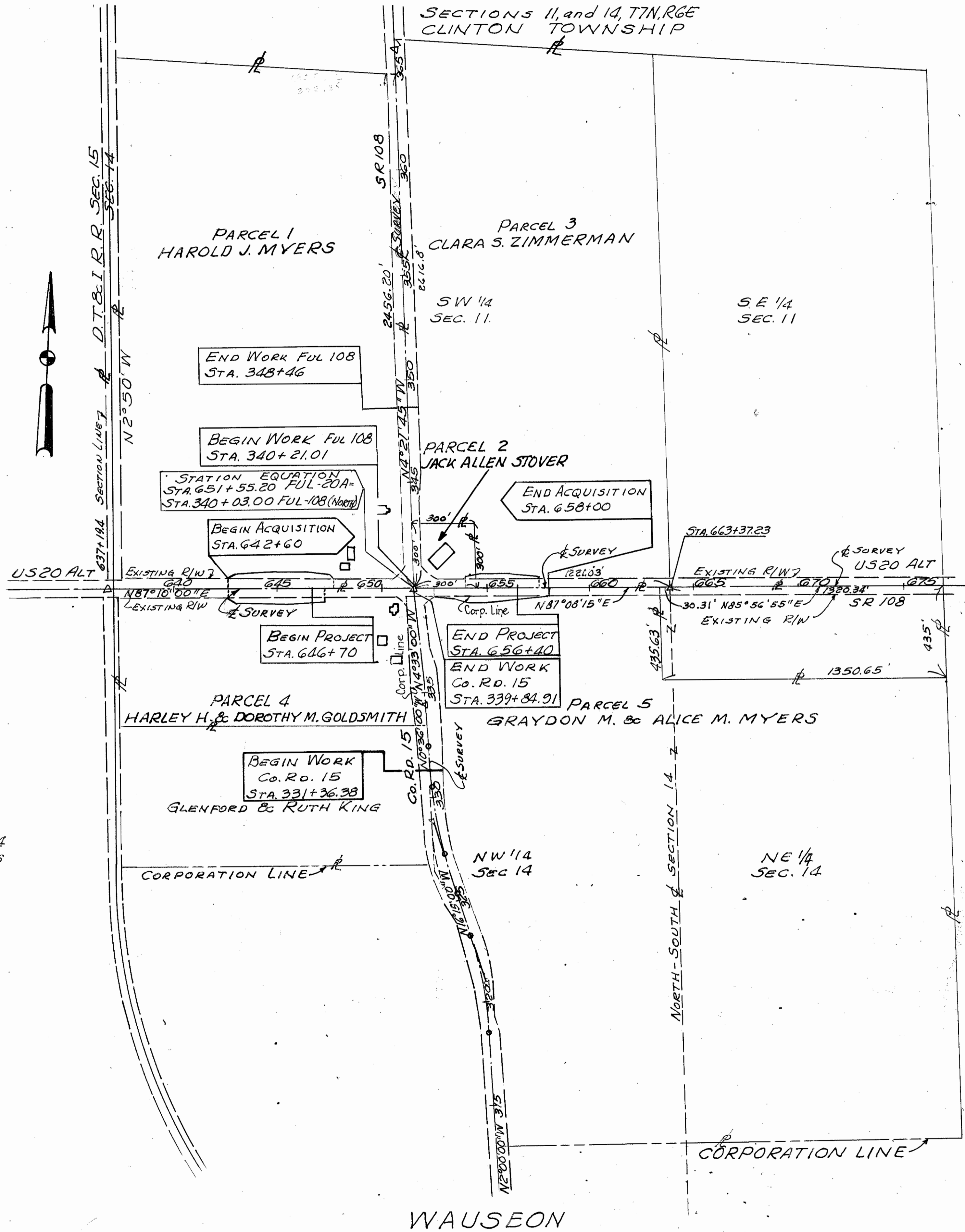
FHWA REGION	STATE	PROJECT
5	OHIO	

31
34

FUL - 20A - 12.25
FUL - 108 - G.44

1
4

UTILITY OWNERS	
TYPE	NAME & ADDRESS
WATER	VILLAGE OF WAUSEON WATER DEPARTMENT 230 CLINTON STREET WAUSEON, OHIO, 43567
ELECTRIC	TOLEDO EDISON Co. 134 N. FULTON St. WAUSEON, OHIO, 43567
TELEPHONE	UNITED TELEPHONE Co. OF OHIO 1600 NORTH SHOOP AVE. WAUSEON, OHIO, 43567
GAS	OHIO GAS Co. 200 WEST HIGH ST. BRYAN, OHIO, 43506



SE 1/4
SEC. 10



NE 1/4
SEC. 15

SE 1/4
SEC. 11

SW 1/4
SEC. 11

NW 1/4
SEC. 14

NE 1/4
SEC. 14

WAUSEON

Rev	DATE	DESCRIPTION

R1108 #4 A-49

Submitted June 1997

TOTAL NUMBER OF _____
 5 OWNERSHIPS
 0 TOTAL TAKES
 0 OWNERSHIPS WITH STRUCTURES INVOLVED
 11 OWNERSHIPS WITH "P" ITEMS

SUMMARY OF ADDITIONAL RIGHT OF WAY

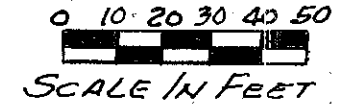
CALC. BY	FUL-20A-12.25	OHIO	32
DATE	FUL-10B-6.44	FHWA REGION	5
CHKD. BY			34
DATE			2
FEDERAL PROJECT		STATE PROJECT	4
		02163(0)	

PARCEL	OWNER	SHEET NO.	OWNERS RECORD		RECORD AREA	TOTAL P.R.O.	GROSS TAKE	P.R.O. IN TAKE	NET TAKE	STRUC-TURE	NET RESIDUE		TYPE FUND	REMARKS AND PERSONALTY	AS ACQUIRED	
			BOOK	PAGE							LEFT	RIGHT			BOOK	PAGE
1	HOWARD J. MYERS	3	196	779	71.25 Ac.	3.867 Ac.	0.745 Ac.	0.532 Ac.	0.213 Ac.	No	66.648 Ac.		HHS 2/10 2/21/97	To finish backslopes of ditches		
1T		3						0.034 Ac.						To finish backslopes of ditches		
1TI		3 & 4						0.083 Ac.						To finish backslopes of ditches		
2	JACK ALLEN STOVER	3	213	873	2.07 Ac.	0.551 Ac.	0.067 Ac.	0.050 Ac.	0.017 Ac.	No	1.502 Ac.			To finish backslopes of ditches		
2WA		3 & 4						0.023 Ac.						To finish backslopes of ditches		
2WA-1		3						0.017 Ac.						To finish backslopes of ditches		
3	CLARA S. ZIMMERMAN	3	196	339	77.93 Ac.	3.161 Ac.	0.380 Ac.	0.271 Ac.	0.109 Ac.	No	74.660 Ac.			To finish backslopes of ditches		
3T		4						0.051 Ac.						To finish backslopes of ditches		
4	HARLEY H. GOLDSMITH & DOROTHY M. GOLDSMITH	3	164	130	21.00 Ac.	2.230 Ac.	1.049 Ac.	0.764 Ac.	0.285 Ac.	No	18.245 Ac.			To construct a field drive on Rt. at Sta. 647+49		
4T		3						0.015 Ac.						To finish backslopes of ditches		
4TI		3						0.009 Ac.						To finish backslopes of ditches		
5	GRAYDON M. MYERS & ALICE M. MYERS	3	188	978	129.00 Ac.	4.251 Ac.	0.891 Ac.	0.508 Ac.	0.183 Ac.	No	124.566 Ac.			To finish backslopes of ditches.		
5T		3 & 4						0.027 Ac.						To finish backslopes of ditches.		
5TI		3						0.011 Ac.						To finish backslopes of ditches.		

BRUNING 44-260-2800

2	11-8-79	Rev. Take Area Per 174
1	2-16-79	Chg 1WA1, 4WA1, 5WA1 to 1T1, 3T1, 4T1
1	2-16-79	Chg 1WA, 3WA, 4WA, 5WA to 1T, 3T, 4T, 5T
REV.	DATE	DESCRIPTION

S.W. 1/4 Sec. 11, T7N, R6E, CLINTON TWP.



FHWA REGION	STATE	PROJECT
5	OHIO	

33
34

3
4

Begin Work
Sta 642+25
U.S.R. 20A

Begin Project
Sta 646+70
S.L.M. = 12.25

HAROLD J. MYERS
T.B.A. 0.213 Ac.
P.R.O. 0.532 Ac.
TOTAL 0.745 Ac.

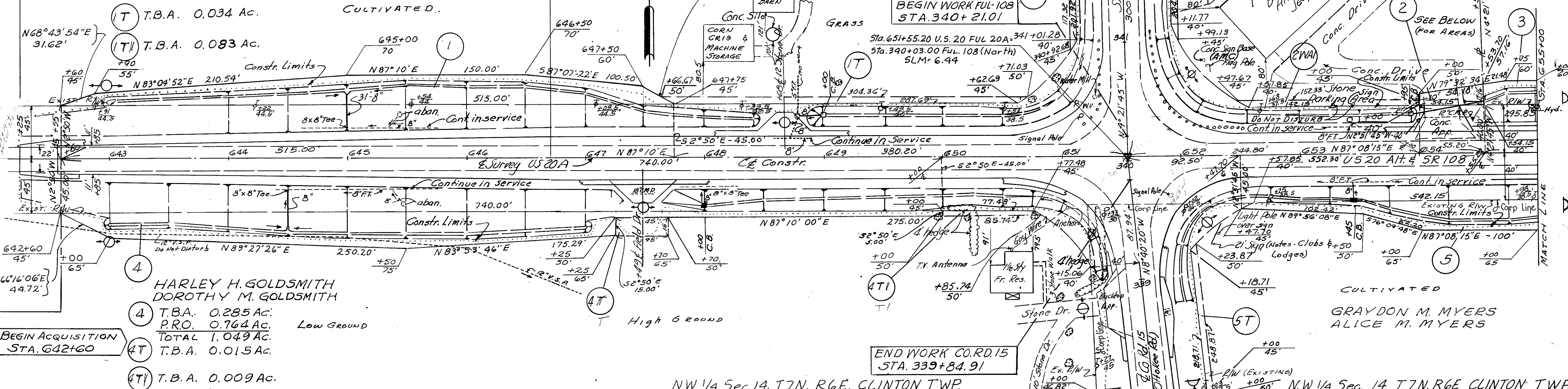
IT T.B.A. 0.034 Ac.

IT T.B.A. 0.083 Ac.

N68°43'54"E
31.62'

N83°04'52"E
210.54'

CULTIVATED.



HARLEY H. GOLDSMITH
DOROTHY M. GOLDSMITH

4 T.B.A. 0.285 Ac.

P.R.O. 0.764 Ac.

TOTAL 1.049 Ac.

4T T.B.A. 0.015 Ac.

4T T.B.A. 0.009 Ac.

BEGIN ACQUISITION
STA. 642+60

END WORK CO.RD.15
STA. 339+84.91

NW 1/4 Sec. 14, T7N, R6E, CLINTON TWP.

CULTIVATED
GRAYDON M. MYERS
ALICE M. MYERS

JACK ALLEN STOVER

2 T.B.A. 0.017 Ac.

P.R.O. 0.050 Ac.

TOTAL 0.067 Ac.

2T T.B.A. 0.023 Ac.

2T T.B.A. 0.017 Ac.

SW 1/4 Sec. 11, T7N, R6E CLINTON TWP.

CLARA S. ZIMMERMAN

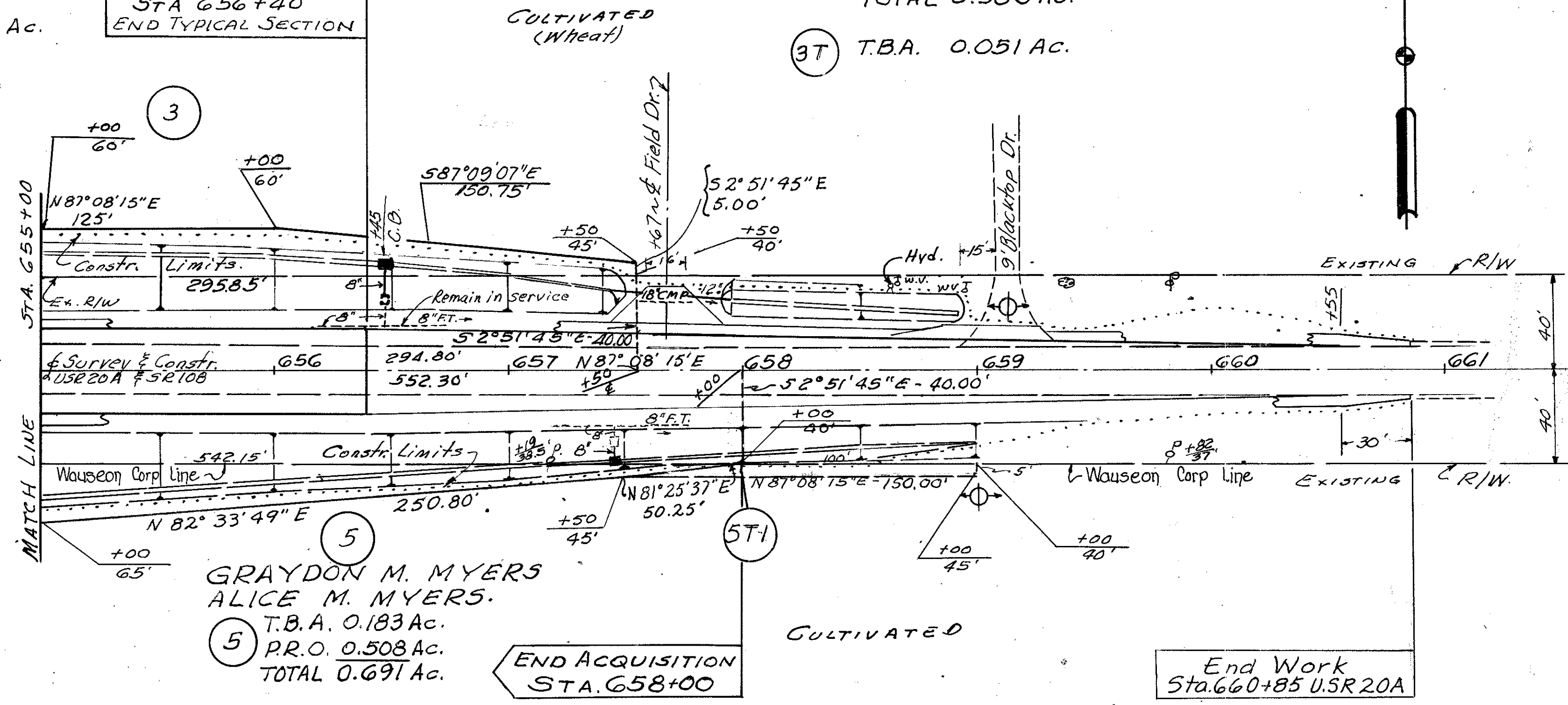
3 T.B.A. 0.109 Ac.

P.R.O. 0.271 Ac.

TOTAL 0.380 Ac.

3T T.B.A. 0.051 Ac.

END PROJECT
Sta 656+40
END TYPICAL SECTION



GRAYDON M. MYERS
ALICE M. MYERS.

5 T.B.A. 0.183 Ac.

P.R.O. 0.508 Ac.

TOTAL 0.691 Ac.

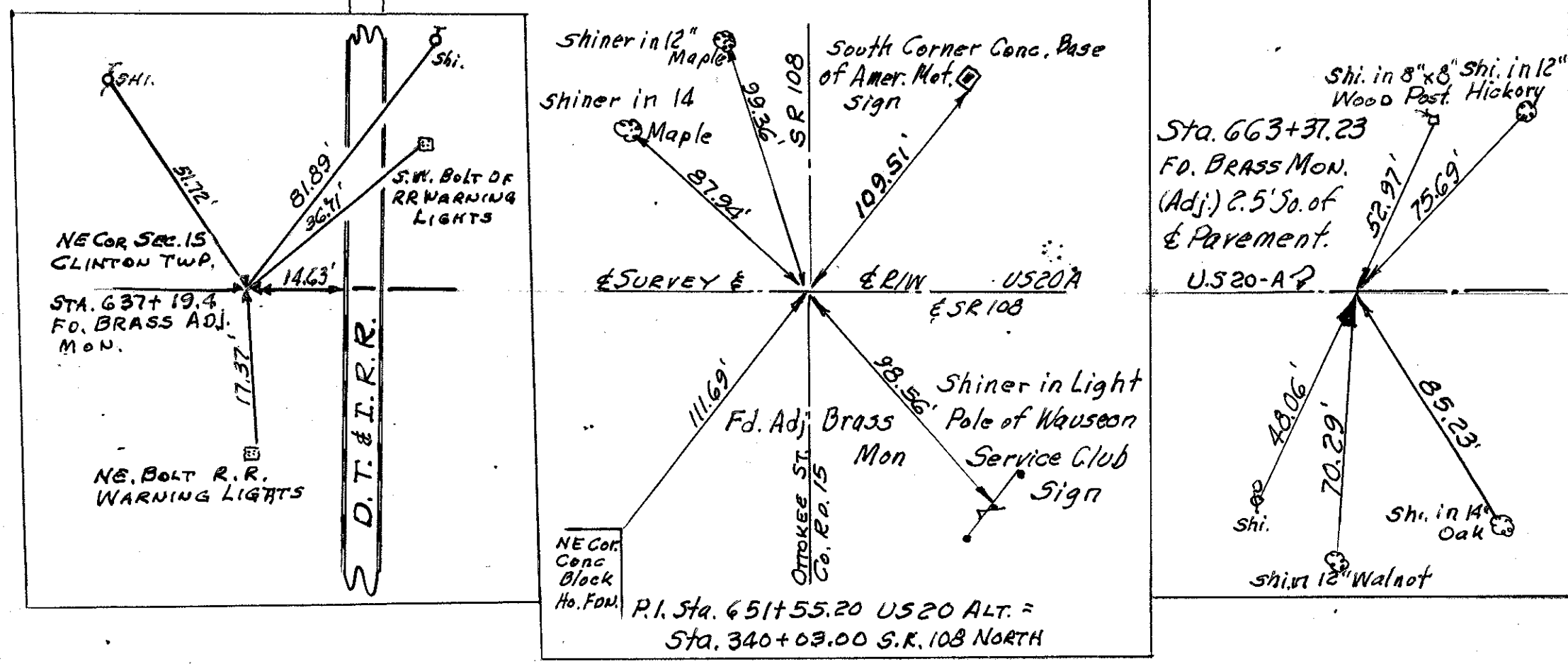
5T T.B.A. 0.027 Ac.

5T T.B.A. 0.011 Ac.

END ACQUISITION
Sta. 658+00

End Work
Sta. 660+85 U.S.R. 20A

NW 1/4 Sec. 14, T7N, R6E, CLINTON TWP.



REV	DATE	DESCRIPTION
2	11-8-79	Revised dist. on Par. 17-18 Rev. Take Areas
1	2-16-79	Chg. 1WA, 1WA1, 1WA11 to 1T1, 1T1, 1T1
1	2-16-79	Chg. 1WA, 1WA, 1WA, 1WA to 1T, 1T, 1T, 1T

FHWA REGION	STATE	PROJECT
5	OHIO	

FUL 20A-12.25
FUL 108-6.44

34
34
4
4

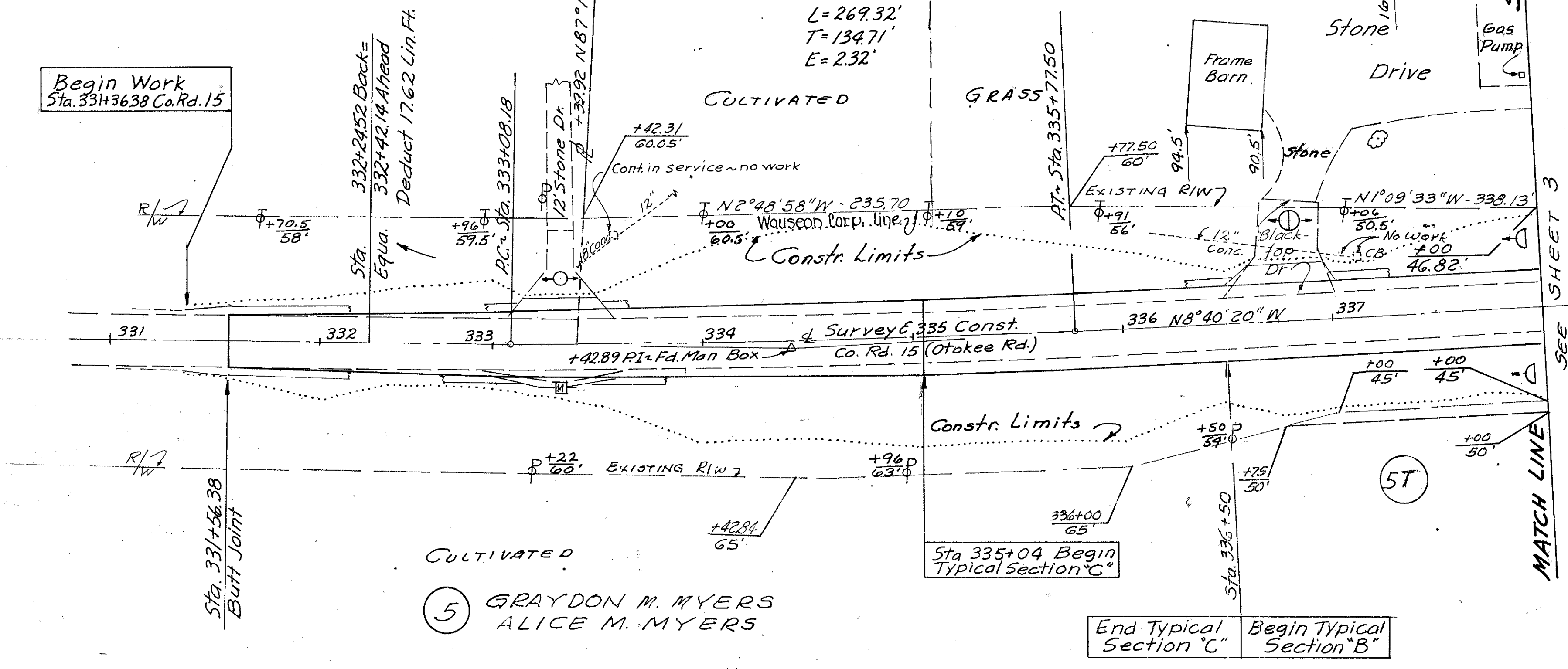
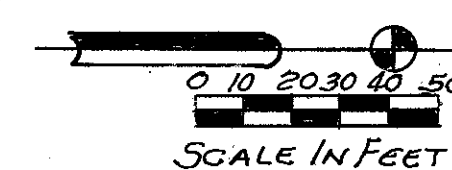
NW 1/4 Sec. 14, T7N, R6E CLINTON TWP.

Existing Curve Data

P.C. = 333+08.18
 P.T. = 334+42.89
 P.T. = 335+77.50
 $\Delta = 3^{\circ}57'44''$
 $D = 1'28''00''$
 $R = 3906.53$
 $L = 269.32'$
 $T = 134.71'$
 $E = 2.32'$

4 HARLEY H. GOLDSMITH
 DOROTHY M. GOLDSMITH

Begin Work
 Sta. 331+36.38 Co. Rd. 15



5 GRAYDON M. MYERS
 ALICE M. MYERS

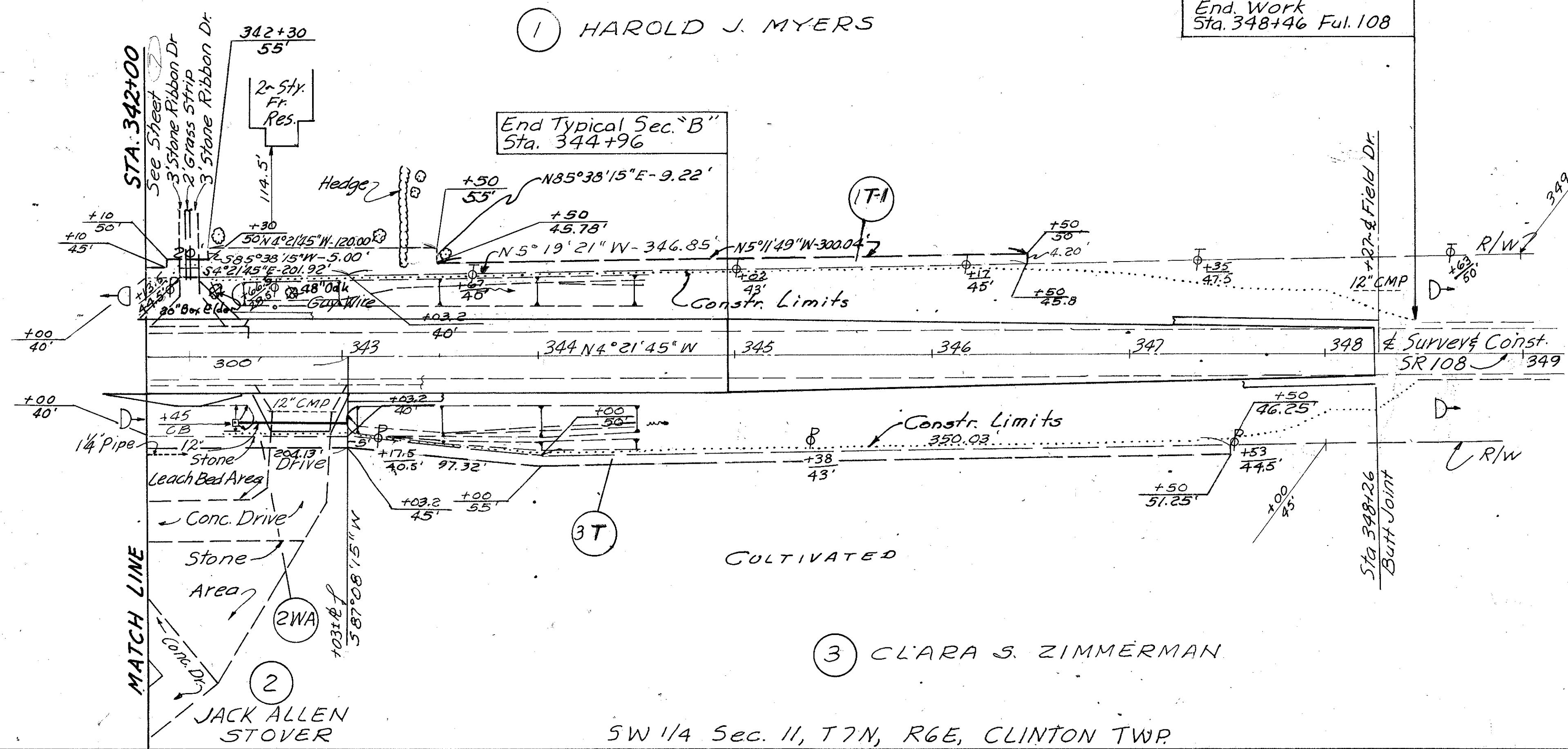
End Typical Section "C"
 Begin Typical Section "B"

NW 1/4 Sec. 14, T7N, R6E, CLINTON TWP.
 SW 1/4 Sec. 11, T7N, R6E, CLINTON TWP.

1 HAROLD J. MYERS

End Work Sta. 348+46 Ful. 108

End Typical Sec. "B" Sta. 344+96



3 CLARA S. ZIMMERMAN

2 JACK ALLEN STOVER

SW 1/4 Sec. 11, T7N, R6E, CLINTON TWP.

REV	DATE	DESCRIPTION
2	11-8-79	Changed Par. 17 to allow for new back slopes
1	2-16-79	Chgd. 3WA, 5PA, 1WA-1 to 3T, 5T, 1T-1
Rev	DATE	DESCRIPTION