

637+00 to 641+50  
Remove Unsuitable Material  
2915 C.Y. E-1

644+52 to 647+52  
Rt. Lane Outside  
300' Type A Guard Rail

645+90 to 647+68.1  
62' Lt., 83.9 L.F.  
20' Lt., 77.6 L.F.  
8"x6" Bituminous Curb, Special  
62' Rt., 100.4 L.F.

647+00  
1-Type A Inlet  
109.12'-18" S.S.R.C.C.P. I-2  
2-Pipe Specials, 18"S.S.R.C.C.P., 30° Bend, I-5  
1-Type A Headwall  
(101 C.Y. Class C)(53# Reinf. Steel)  
4.32 C.Y. Exc., E-2, Headwall  
22.3 S.Y. Paved Ditch, I-14

647+77 to 648+35 118' Rt.  
2-Type A Headwalls  
(602 C.Y. Class C)(294# Reinf. Steel)  
69.08'-30" S.S.R.C.C.P. S-27  
87.40 C.Y. Exc., E-2, Structures  
57.4 S.Y. 4" Pl. Conc. Paved Ditch, I-14

648+89 to 651+89 Lt. Lane Outside  
300' Type A Guard Rail

654+00  
1-Type A Inlet  
106.82'-15" S.S.R.C.C.P. I-2  
1-Type A Headwall  
(0.80 C.Y. Class C)(46# Reinf. Steel)  
3.41 C.Y. Exc., E-2, Headwall  
7.6 S.Y. 4" Pl. Conc. Paved Ditch, I-14  
2-Pipe Specials, 15"S.S.R.C.C.P., 30° Bend, I-5

648+90.7 Rt. to 655+00 Rt.  
609.3 L.F. 8"x6" Bituminous Curb, Special

651+94 to 655+00 Lt. Lane Outside  
306' Type B Guard Rail

649+61 to 655+00 Lt. & Rt.  
10 Delineators, I-24

649+53 to 655+00 Rt. Lane Outside  
547' Type B Guard Rail

P.O.T. 630+21.95

630+00 to 633+66, Lt.  
366' Type B Guard Rail

630+00 to 631+24, Rt.  
124' Type B Guard Rail

633+66 to 634+41, Lt. Lane Outside  
75' Type A Guard Rail

631+24 to 634+24, Rt. Lane Inside  
300' Type A Guard Rail

631+29 to 634+29 Rt. Lane Outside  
300' Type A Guard Rail

635+66 to 638+66 Lt. Lane Outside  
300' Type A Guard Rail

P.O.T. 634+57.20

635+61 to 638+61 Lt. Lane Inside  
300' Type A Guard Rail

635+50 to 636+25, Rt. Lane Outside  
75' Type A Guard Rail

637+00  
Permanent Monument

630+00 to 631+30  
Median  
151 S.Y. Sodding, L-10

641+00  
1-Type A Inlet  
1-Type A Headwall  
120.45'-15" S.S.R.C.C.P. I-2  
(0.80 C.Y. Class C)(46# Reinf. Steel)  
3.41 C.Y. Exc., E-2, Headwall  
20.7 S.Y. Paved Ditch, I-14  
2-Pipe Specials, 15"S.S.R.C.C.P., 30° Bend, I-5

638+66 to 646+94, Lt.  
828' Type B Guard Rail

636+26 to 644+51, Rt.  
825' Type B Guard Rail

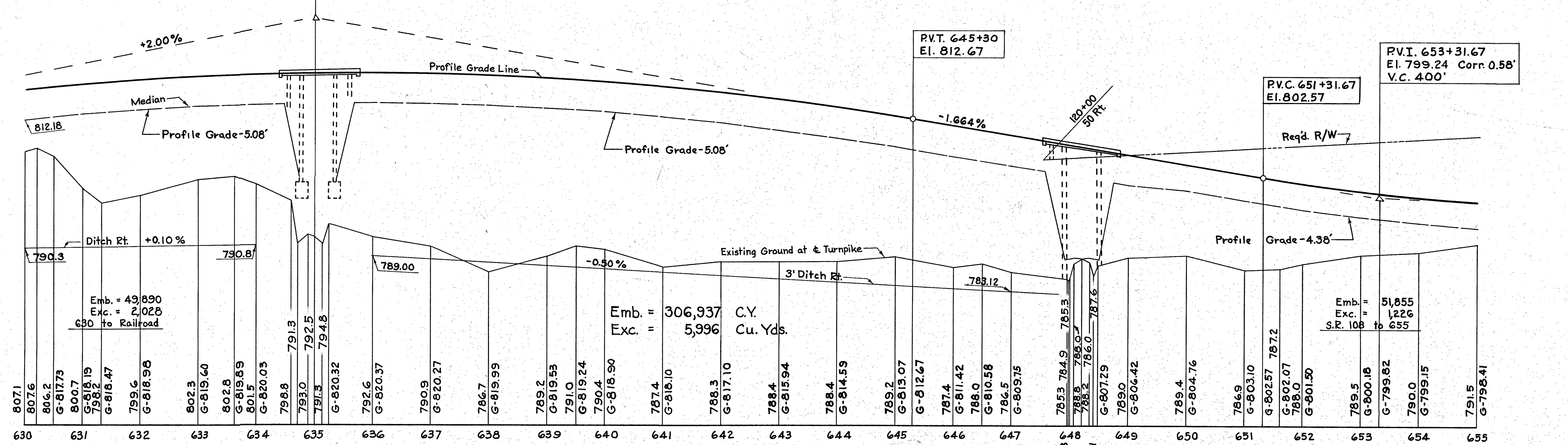
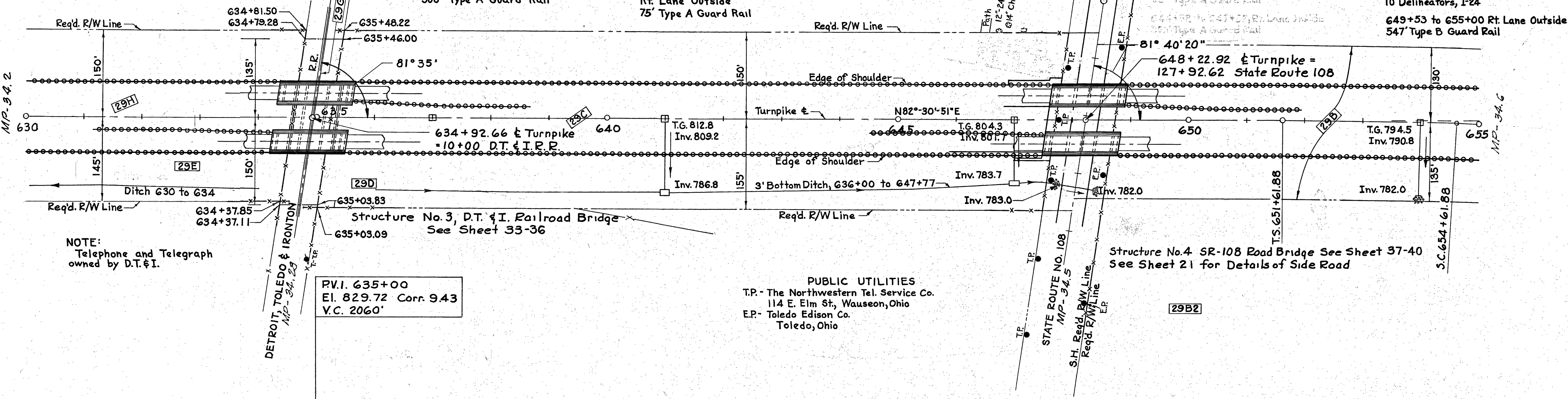
644+57 to 647+57 Rt. Lane Inside  
300' Type A Guard Rail

647+00  
Unsuitable Material  
1500 C.Y.

647+00  
Unsuitable Material  
1100 C.Y.

645+20 to 647+20  
Median  
243.4 S.Y. Sodding, L-10

648+78 to 649+53  
Rt. Lane Outside  
75' Type A Guard Rail



QUANTITIES					
No.	Item	Location & Remarks	Unit	Estimated Quantity	Final Quantity
<b>ROADWAY</b>					
E-1	Roadway Exc.		C.Y.	14,865	5,996
E-11	Water		M.Gal.	768	2940.656
I-15	Type A, G.R.		L.F.	4,571	2,700
I-15	Type B, G.R.		L.F.	2,137	2,996
I-23	Right of Way		L.F.	3,434	5,552.6
I-24	Delineators		Ea.	10	10
I-26	Perm. Monument		Ea.	2	2
L-3	Placing Stock-piled Topsoil		S.Y.	8,410	10,916
L-9	Seeding of Protective Type A Commercial Fertilizer (10-6-4)		S.Y.	8,410	10,916
L-9	Sodding		S.Y.	0.757	0.901
L-10	Special Seeding		S.Y.	588	850.7
L-19	Special Seeding		S.Y.	9,000	31,639
E-1	Roadway Exc.	Unsu. Mat'l.	C.Y.		2,915
<b>DRAINAGE</b>					
E-2	Exc. for Struct.		C.Y.	98	98.54
E-3	Channel Exc.		C.Y.	5	0
S-1	Conc. for Str. Class C		C.Y.	9.6	863
S-4	Reinf. Steel		Lbs	426	439
S-27	30"S.S.R.C.C.P.		L.F.	67	69.08
I-2	15"S.S.R.C.C.P.		L.F.	236	227.27
I-2	18"S.S.R.C.C.P.		L.F.	108	109.12
I-5	Pipe Special 18"S.S.R.C.C.P. 30° Bend		Ea.	2	2
I-5	Pipe Special 15"S.S.R.C.C.P. 30° Bend		Ea.	4	4
I-8	Inlets, Type A		Ea.	2	2
I-8	Inlets, Type A		Ea.	1	1
I-10	Riprap, Type A		S.Y.	21	0
I-14	Paved Ditch (4" Concrete)		S.Y.	40	108.0
<b>PAVEMENT</b>					
I-7	10" Reinf. Conc. Approach Exc.		S.Y.	320	320
I-22	Selected Sub-base		C.Y.	6,730	5,710.91
T-33	Bit. Mac. Surf. Course (Shoulders)		S.Y.	8,996	8,997.6
T-71	10" Reinf. Conc. Pavt.		S.Y.	12,344	11,676.8
	Special 8"x6" Bituminous Curb		L.F.		1,002.8

"AS-BUILT PLANS" AS 4-4-56

1 Sodding, earthwork (650-655 Rt) KE.W. 6-5-53

No. Revision By Date

OHIO TURNPIKE COMMISSION  
OHIO TURNPIKE PROJECT NO. 1

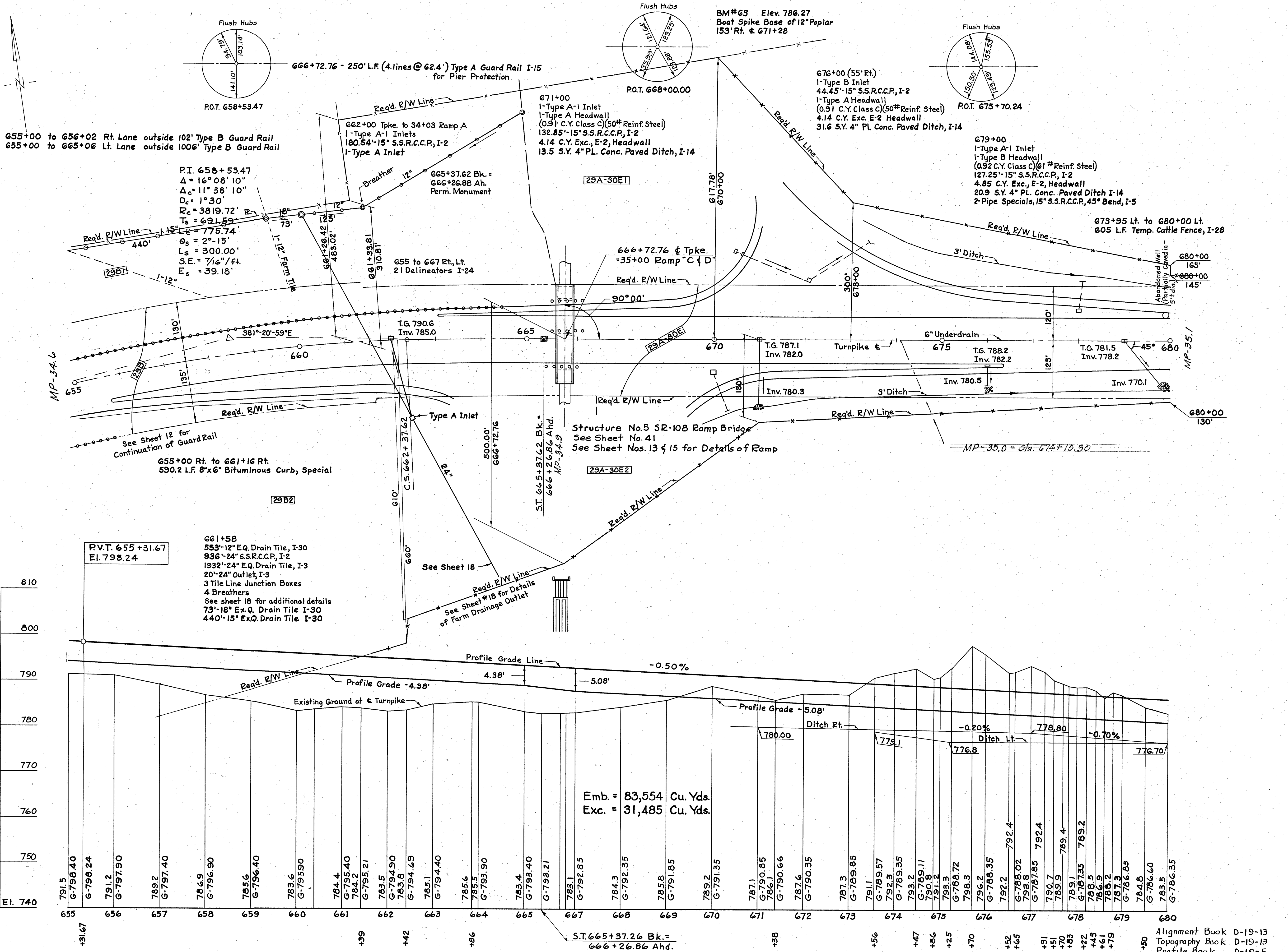
PLAN AND PROFILE  
STA. 630 - STA. 655

GENERAL INDUSTRIES ENGINEERING CO.  
CONTRACTING ENGINEER  
DESIGN SECTION D-19

DESIGNED: W.S.L. CHECKED: J.P.S. DATE: 3-4-53  
DRAWN: J.E.S. IN CHARGE: J.P.S. SCALE: 1"=10', 100'

CONTRACT No. C-54 SHEET 9 OF 51

Alignment Book D-19-13  
Topography Book D-19-13  
Profile Book D-19-4, D-19-5



QUANTITIES					
No.	Item	Location & Remarks	Unit	Estimated Quantity	Final Quantity
<b>ROADWAY</b>					
E-1	Roadway Exc.		C.Y.	34,087	31,485
E-11	Water		M.G.	224	800.512
E-12	Pipe Removal	(Under 16")	L.F.	945	0
I-15	Type A, G.R.		L.F.	1,189	250
I-15	Type B, G.R.		L.F.		1108
I-23	Right of Way		L.F.	7,581	4,741.5
I-26	Perm. Monument		Ea.	1	1
I-24	Delineators		Ea.	21	21
I-3	Placing Stockpiled Topsoil		S.Y.	15,347	11,252
L-9	Seeding & Protecting, Type A	Sand	S.Y.	15,347	11,252
L-9	Commercial Fertilizer (10-6-4)		Ton	1.381	0.930
L-19	Special Seeding	Sand	S.Y.	26,936	3,734
I-28	Temp. Cattle Fence		L.F.		605
<b>DRAINAGE</b>					
E-2	Exc. for Struct. Channel Exc.		C.Y.	15	13.13
E-3	Conc. for Str. Class C		C.Y.	3	0
S-4	Reinf. Steel		Lbs	159	161
I-2	15" S.S.R.C.C.P.		L.F.	453	485.09
I-2	24" S.S.R.C.C.P.		L.F.	1,000	936
I-3	24" Outlets for Rdwy. Drainage		L.F.	20	20
I-3	24" E.Q. Dr. Tile		L.F.	1,935	1,932
I-4	6" Underdrains Type A		L.F.	500	0
I-5	Pipe Special 15" S.S.R.C.C.P. 45° Bend		Ea.		2
I-8	Inlets, Type A-1		Ea.	4	3
I-8	Inlet Type A		Ea.		1
I-8	Inlet Type B		Ea.	1	1
I-9	12"x18" Stone Underdrains (No.)	to be placed as directed by the Engineer.	L.F.	200	0
I-10	Riprap, Type A		S.Y.	44	0
I-14	4" Pl. Conc. Paved Ditch		L.F.	558	66.0
I-30	12" E.Q. Dr. Tile		L.F.		553
I-30	15" E.Q. Dr. Tile		L.F.		440
I-30	18" E.Q. Dr. Tile		L.F.		73
<b>PAVEMENT</b>					
I-22	Selected Sub-base		C.Y.	6,750	5652.23
T-33	Bit. Mac. Surf. Crse.	(Shoulders)	S.Y.	10,000	
T-71	10" Reinf. C.C. Pav't. Special 8"x6" Bit. Curb		S.Y.	13,333	12,857.6
			L.F.		590.2

"AS-BUILT PLANS" AS 4-4-56

1 Guard Rail, earthwork (Ramp A Rt.) KEW 6-5-53

No. Revision By Date

OHIO TURNPIKE COMMISSION  
OHIO TURNPIKE PROJECT NO. 1

PLAN AND PROFILE  
STA. 655 - STA. 680

GENERAL INDUSTRIES ENGINEERING CO.  
CONTRACTING ENGINEER  
DESIGN SECTION D-19

DESIGNED: W.S.L. CHECKED: J.P.S. DATE: 3-6-53  
DRAWN: J.E.S. IN CHARGE: J.P.S. SCALE: 1"=10', 100'

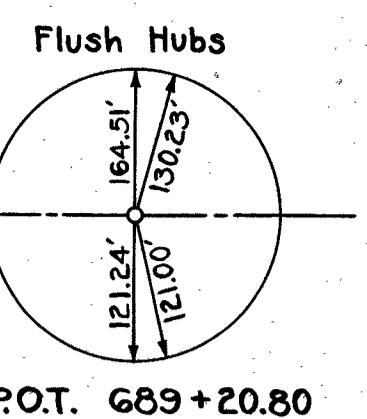
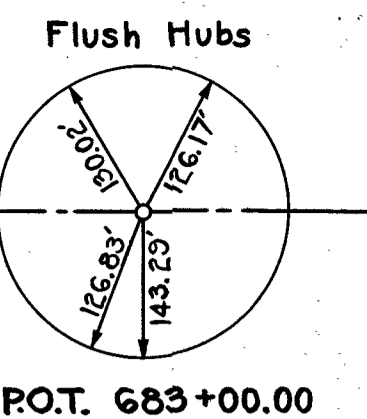
CONTRACT No. C-54 SHEET 10 OF 51

Alignment Book D-19-13  
Topography Book D-19-13  
Profile Book D-19-5

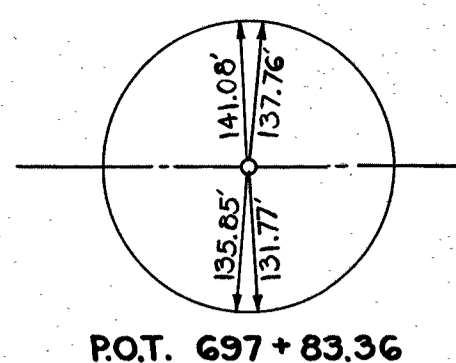
Emb. = 83,554 Cu. Yds.  
Exc. = 31,485 Cu. Yds.

S.T. 665+37.26 Bk. =  
666+26.86 Ahd.

B.M. #64 Elev. 778.26  
Boat Spike Base Corner Fence Post  
206' Rt. @ 682+90



B.M. #65 Elev. 776.92  
Boat Spike Base 12" Hickory  
952' Rt. @ 690+47



680+00 Lt. to 682+50 Lt.  
250 LF. Temp. Cattle Fence, I-28

687+00  
1-Type A-1 Inlet  
1-Type A Headwall  
(0.91 C.Y. Class C) (50# Reinf. Steel)  
97.95' 15" S.S.R.C.C.P., I-2  
4.14 C.Y. Exc., E-2, Headwall

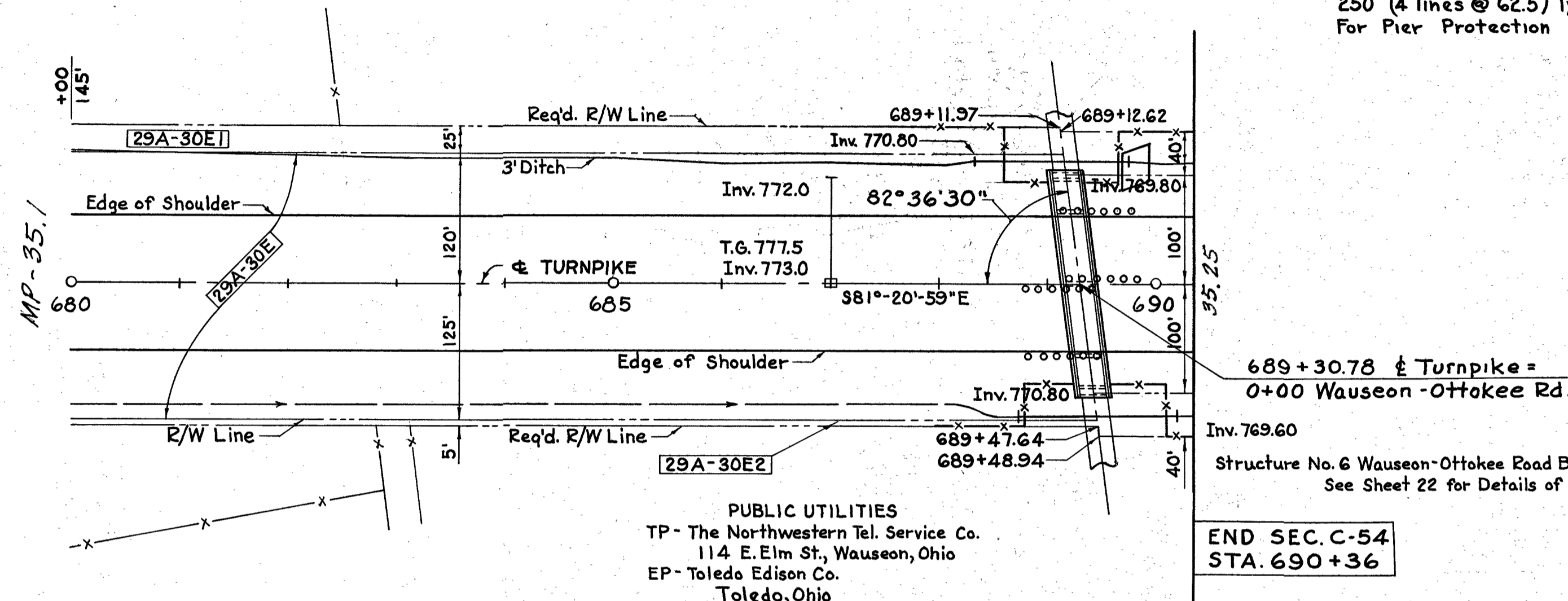
687+40 to 690+00  
Remove Unsuitable Material  
3929 C.Y., E-1

688+35 to 689+75, 112' Lt.  
2-Type A Headwalls  
(9.38 C.Y. Class C) (40# Reinf. Steel)  
150.65' 36" E.S.R.C.C.P., S-27  
295.92 C.Y. Exc., E-2, Structures

688+75 to 690+17, 122' Rt.  
2-Type A Headwalls  
(6.02 C.Y. Class C) (29# Reinf. Steel)  
145.81' 30" E.S.R.C.C.P., S-27  
211.60 C.Y. Exc., E-2, Structures

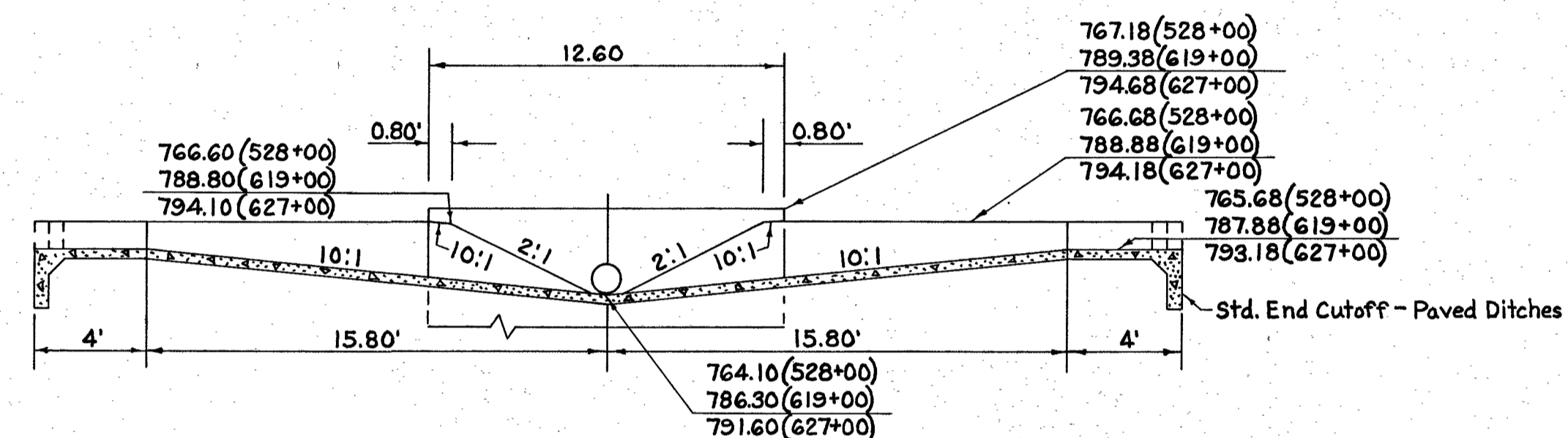
689+30.78  
250' (4 lines @ 62.5') Type A Guard Rail, I-15  
For Pier Protection

689+82, Lt.  
91.0 S.Y. Sodding, L-10

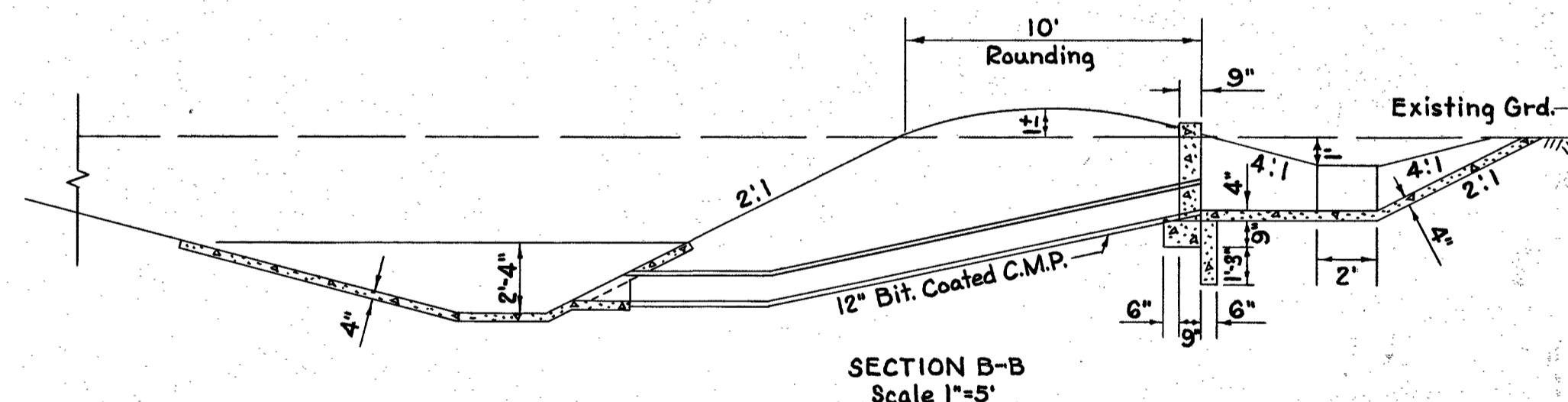


PUBLIC UTILITIES  
TP - The Northwestern Tel. Service Co.  
114 E. Elm St., Wauseon, Ohio  
EP - Toledo Edison Co.  
Toledo, Ohio

END SEC. C-54  
STA. 690+36

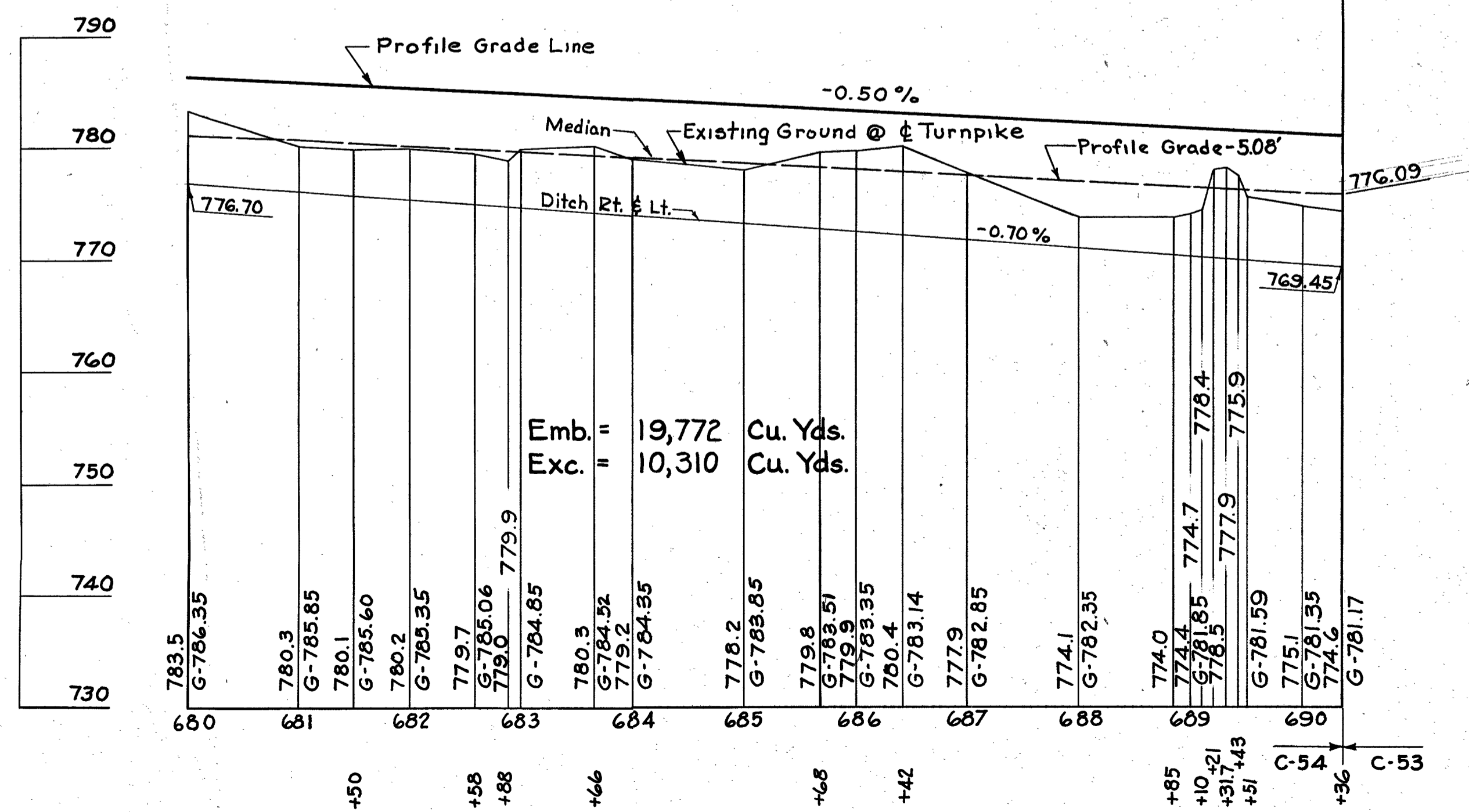


SECTION C-C  
Scale 1"=5'



SECTION B-B  
Scale 1"=5'

CULVERT ENTRANCE - TOP OF SLOPE DITCHES  
(See Plan of Entrance - Standard Drawing No. 1)



QUANTITIES					
No.	Item	Location & Remarks	Unit	Estimated Quantity	Final Quantity
<b>ROADWAY</b>					
E-1	Roadway Exc.		C.Y.	13,469	10,310
E-11	Water		Mgal	49	189,431
I-15	Type A, G.R.		L.F.	268	250
I-23	Right of Way		L.F.	2,086	2,203.1
L-3	Fence, Type 2		L.F.	2,086	2,203.1
L-9	Placing Stock-piled Topsoil		S.Y.	8,410	5,742
L-9	Seeding & Protecting Type A	Sand	S.Y.	8,410	5,742
L-9	Fertilizer (10-6-4)		Ton	0.757	0.474
L-19	Special Seeding	Sand	S.Y.	4,889	8,453
L-10	Sodding		S.Y.		91.0
I-28	Temp. Cattle Fence		L.F.		250.0
E-1	Roadway Exc.	Unsuit. Mat'l.	C.Y.		3,929
<b>DRAINAGE</b>					
E-2	Exc. for Struct.		C.Y.	429	511.66
E-3	Channel Exc.		C.Y.	11	0
S-1	Conc. for Str. Class C		C.Y.	16.3	16.31
S-4	Reinf. Steel		Lbs	687	752
S-27	30" E.S.R.C.C.P.		L.F.	142	145.81
S-27	36" E.S.R.C.C.P.		L.F.	140	150.65
I-2	15" S.S.R.C.C.P.		L.F.	96	97.95
I-8	Inlets, Type A-1		Ea.	1	1
<b>PAVEMENT</b>					
I-22	Selected Sub-base		C.Y.	2,797	2,197.08
T-33	Bit. Mac. Surf. Course	(Shoulders)	S.Y.	4,144	
T-71	10" Reinf. Conc. Pavt.		S.Y.	5,522	5,525.9

"AS-BUILT PLANS" AS. 4-4-56

1 Guard Rail, Top of slope ditch outlet K.E.W. 6-5-53

No. Revision By Date

OHIO TURNPIKE COMMISSION  
**OHIO TURNPIKE PROJECT NO. 1**

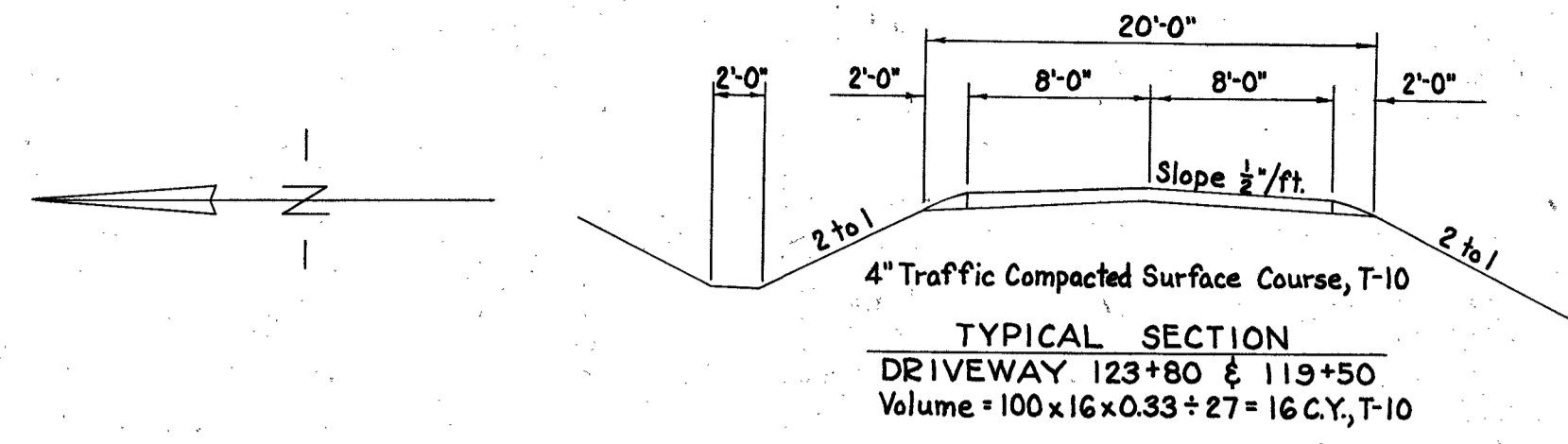
**PLAN AND PROFILE  
STA. 680+00 - STA. 690+36**

GENERAL INDUSTRIES ENGINEERING CO.  
CONTRACTING ENGINEER  
DESIGN SECTION D-19

DESIGNED: W.S.L. CHECKED: J.P.S. DATE: 3-5-53  
DRAWN: J.E.S. IN CHARGE: J.P.S. SCALE: 1"=10', 100'

CONTRACT No. C-54 SHEET 11 OF 51

Alignment Book D-19-14  
Topography Book D-19-14  
Profile Book D-19-5



123+80, Lt.  
Driveway  
11.6% Traf. Comp. Surf. Course, T-10

123+47 to 123+88 Lt.  
40'-6" Underdrain, Type A (E.S.P.C.C.P.)  
1'-6" Headwall for Underdrain  
(0.10 C.Y. Class C Conc.)  
200'-6" Underdrain, Type A  
0.6 C.Y. Exc. E-3 Headwall

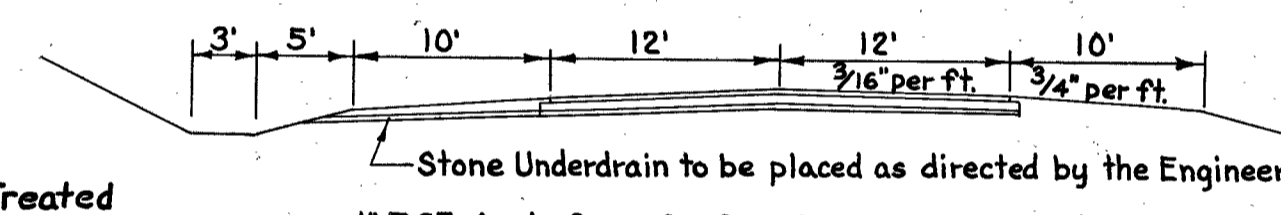
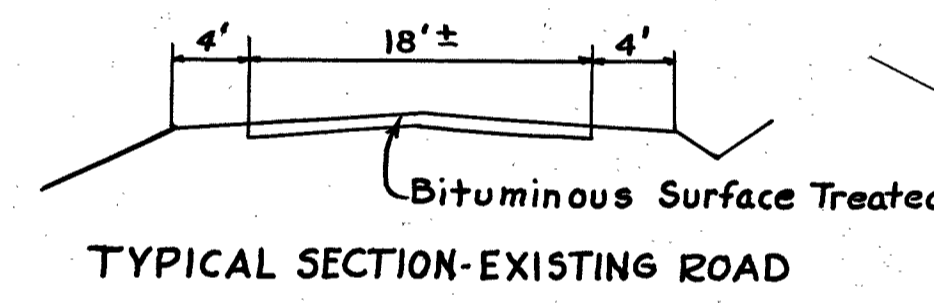
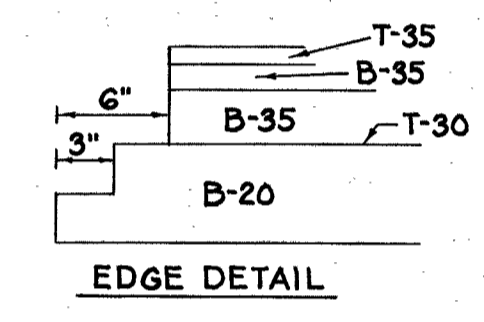
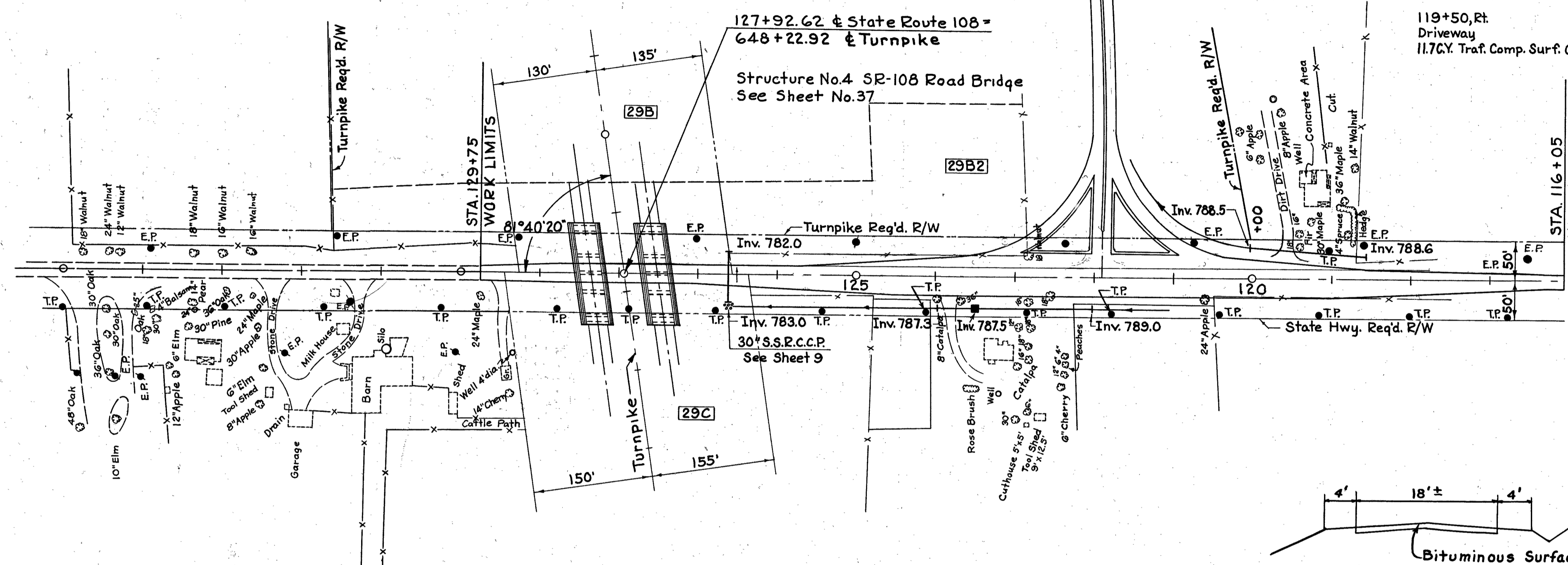
121+47 to 123+47, Lt.  
1'-6" Headwall for Underdrain I-4 (E.S.P.C.C.P.)  
(0.10 C.Y. Class C Conc.)  
200'-6" Underdrain, Type A  
1-Type A-1 Inlet  
HEADWALL EXCAV. = 0.6 C.Y. E-2

118+60 to 119+70 Rt.  
2'-6" Headwalls for Underdrain  
(0.20 C.Y. Class C Conc.)  
110'-6" Underdrain, Type A (E.S.P.C.C.P.)

119+50, Rt.  
Driveway  
11.7% Traf. Comp. Surf. Course, T-10

Note:  
See Sheet 18 for pavement details

124+93 to 129+42.62  
Remove Unsuitable Material  
2213 C.Y., E-1

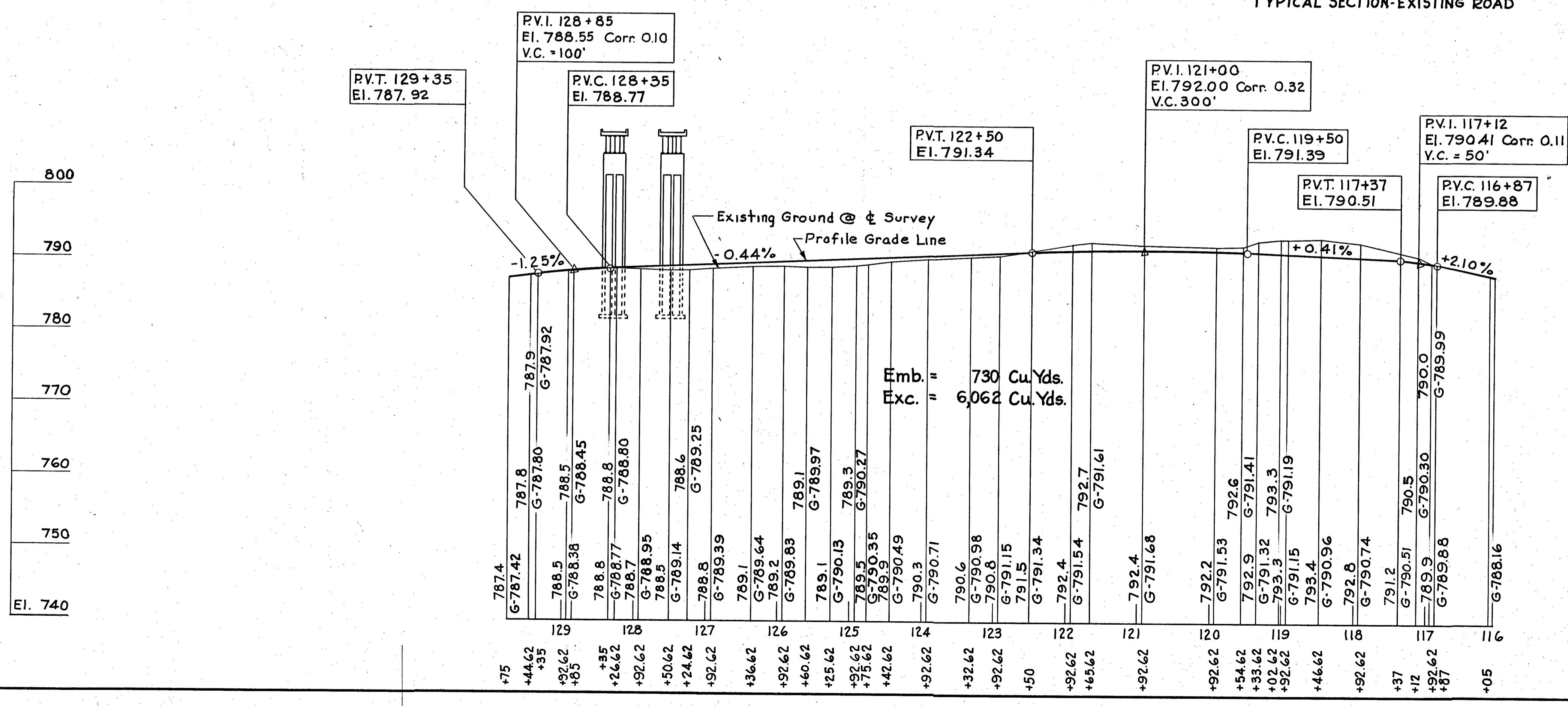


1" T-35 Asphalt Conc. Surface Course Type A  
1 1/2" B-35 Asphalt Conc. Leveling Course  
3" B-35 Asphalt Conc. Base Course  
T-30 Bit. Prime Coat (RT-3, M-5.7)  
5" B-20 W.D. Macadam Base Course  
6" I-22 Selected Sub-base  
10"x8" Stone Underdrain, No. 1, I-9

COMPUTATIONS  
Surface area = 4,571 S.Y.  
extra width for base = 77 S.Y.  
1" T-35 4571 x 1 ÷ 36 = 127 C.Y.  
1 1/2" B-35 4571 x 1 1/2 ÷ 36 = 190 C.Y.  
3" B-35 4571 x 3 ÷ 36 = 381 C.Y.  
T-30 4571 x 0.50 = 2286 Gal.  
5" B-20 = 4571 ÷ 77 = 4678 S.Y. = 646 C.Y.  
6" I-22 Selected Sub base 4648 S.Y. = 775 C.Y.  
I-9 10"x8" Stone Underdrain 400 L.F.

Note:  
Scarify existing pavement before placing embankment

PUBLIC UTILITIES  
E.P. .... Toledo Edison Co.  
Toledo, Ohio  
T.P. .... The Northwestern Tel. Service Co.  
114 E. Elm St., Wauseon, Ohio



QUANTITIES					
No.	Item	Location & Remarks	Unit	Estimated Quantity	Final Quantity
<b>ROADWAY</b>					
E-1	Roadway Exc.		C.Y.	8,482	6,062
E-11	Water		Mgd	3	6,994
L-19	Special Seeding		S.Y.	4,138	
E-1	Roadway Exc.	Unsuit. Mat'l.	C.Y.		2,213
<b>DRAINAGE</b>					
S-1	Conc. for Str. Class C		C.Y.	0.4	0.4
E-2	Exc. for Struct		C.Y.		2.4
I-4	6" Underdrain E.S.P.C.C.P., Type A		L.F.	304	350
I-8	Inlet, Type A-1		Ea.	1	1
I-9	10"x8" Stone Underdrain, (No. 1)	to be placed as directed by the Engineer	L.F.	400	0
<b>PAVEMENT</b>					
B-20	5" W.B. Mac. Base Course		C.Y.	646	626.64
B-35	3" Asp. Conc. Base Course		C.Y.	381	377.89
B-35	1 1/2" Asp. Conc. Leveling Course		C.Y.	190	204.21
I-22	Selected Sub-base		C.Y.	775	891.51
T-30	Bit. Prime Coat RT-3, M-5.7		Gal.	2,286	2,300
T-35	1" Asp. Conc. Surf. Course		C.Y.	127	116.84
T-10	Traffic Comp. Surf. Course		C.Y.	32	23.3

3	Deck Replaced & Widened (45-87-01)	12-87
2	"AS-BUILT PLANS"	AS 44-56
1	Ramp Approach; T-30, T-31 quantities	K.E.W. 6-5-53
No.	Revision	By Date

OHIO TURNPIKE COMMISSION  
**OHIO TURNPIKE PROJECT NO. 1**

**PLAN AND PROFILE STATE ROUTE 108**

GENERAL INDUSTRIES ENGINEERING CO.  
CONTRACTING ENGINEER  
DESIGN SECTION D-19

DESIGNED: W.S.L. CHECKED: J.P.S. DATE: 3-5-53  
DRAWN: J.E.S. IN CHARGE: J.P.S. SCALE: 1"=10,100'

CONTRACT No. C-54 SHEET 21 OF 51

Alignment Book D-19-18  
Topography Book D-19-18  
Profile Book D-19-8