

O.D.O.T. DISTRICT 2 SURVEY OFFICE (USE ONLY)

PERSONNEL \_\_\_\_\_

REFERENCE NO. 1

SHEET 1 OF 17

NOTES AUBLE

DATE 7/19/21

ROUTE SR 108

H.C. NIESE

WEATHER FAIR

COUNTY FULTON

R.C. AUBLE

TEMP. 73°

TOWNSHIP CLINTON

SECTION 12

DWG BY WHITAKER PID 92361

T 6 N R 6 E

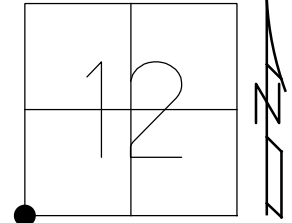
TYPE MONUMENT P.K./WASHER

ON SURFACE - ~~BELOW~~ ON

OFFSET  $\varnothing$  PAVEMENT 4.4' LT : ~~RT~~

- TO - EDGE PAVEMENT

STATION: 0+00



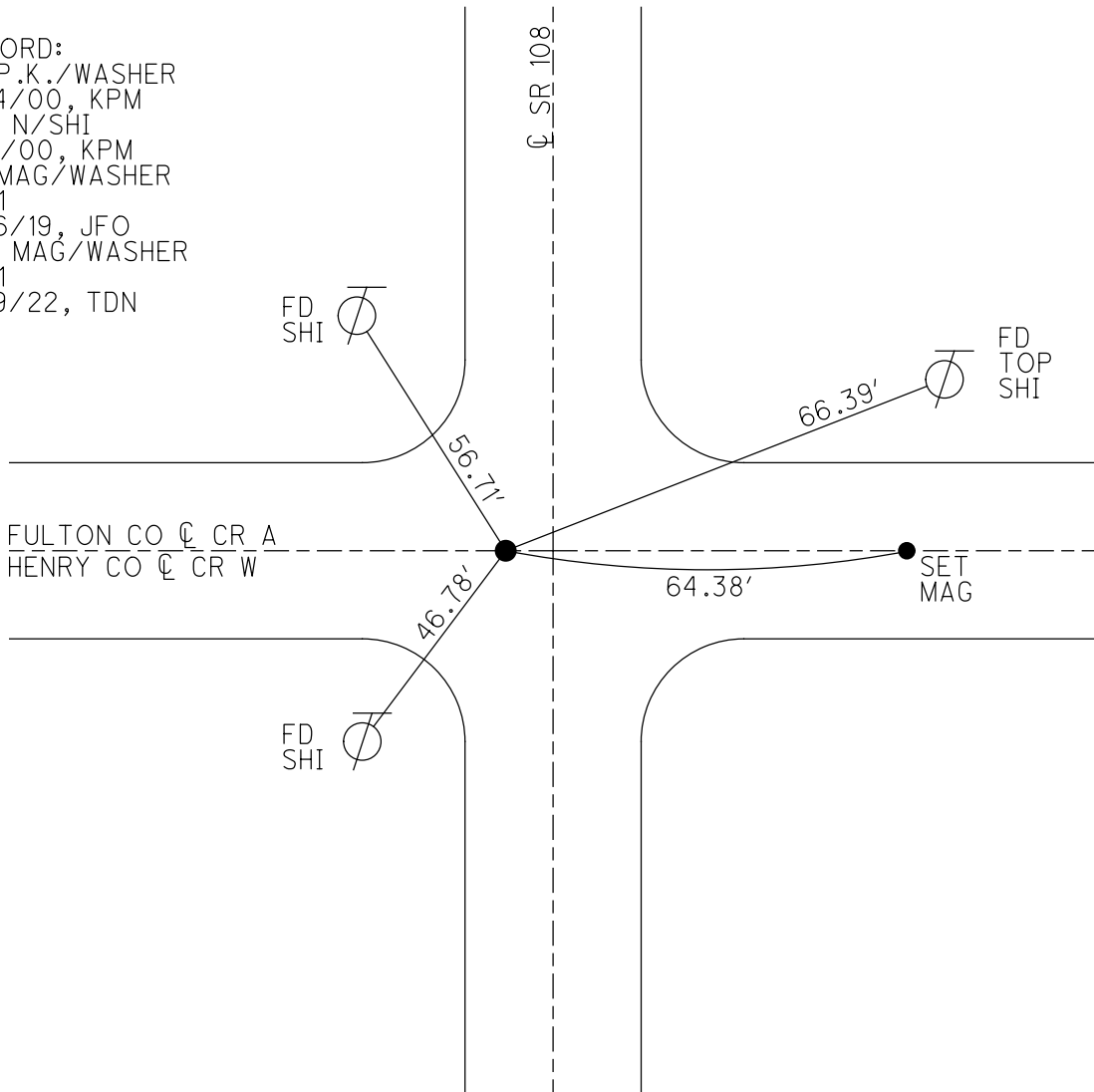
HORIZ.DATUM: NAD83 (2011)

GEOID: 2012A

GRID: NORTHING: 667055.944

EASTING: 1520771.838

RECORD:  
 FD P.K./WASHER  
 7/14/00, KPM  
 SET N/SHI  
 8/4/00, KPM  
 FD MAG/WASHER  
 REF1  
 9/16/19, JFO  
 SET MAG/WASHER  
 REF1  
 7/19/22, TDN



O.D.O.T. DISTRICT 2 SURVEY OFFICE (USE ONLY)

PERSONNEL

REFERENCE NO. 1

SHEET 1 OF 17

NOTES MOSE

DATE 7/14/00

ROUTE SR 108

H.C. BARNHISEL

WEATHER FAIR

COUNTY FULTON

R.C. CANTERBURY

TEMP. 78°

TOWNSHIP CLINTON

SECTION 12

DWG BY NIESE PID \_\_\_\_\_

T 6 N R 6 E

TYPE MONUMENT P.K./WASHER

ON SURFACE - ~~BELOW~~ ON

OFFSET Q PAVEMENT 4.4' LT : RT

- TO - EDGE PAVEMENT

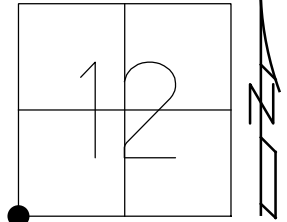
STATION: 0+00

HORIZ.DATUM: \_\_\_\_\_

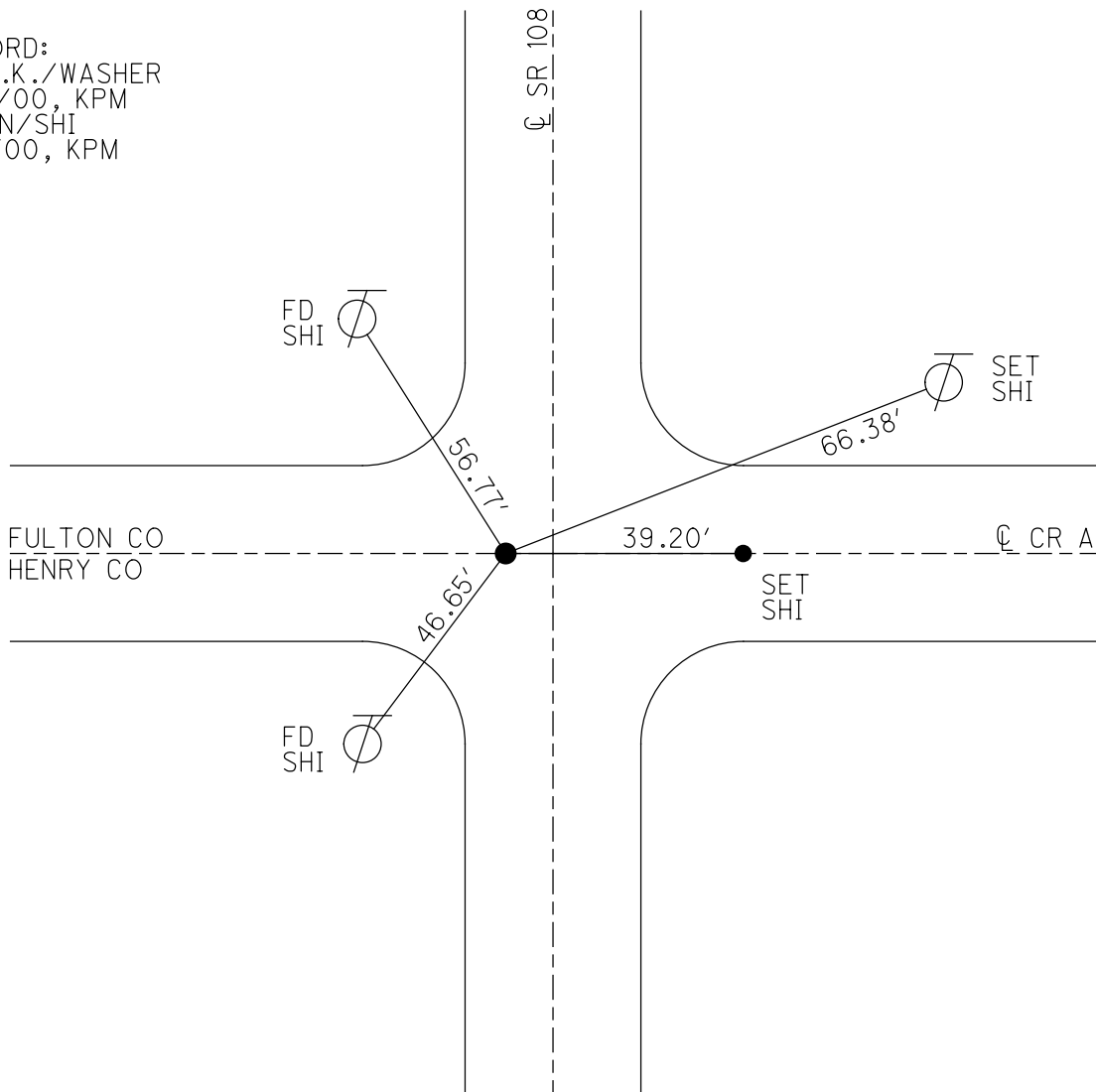
GEOID: \_\_\_\_\_

GRID: NORTHING: \_\_\_\_\_

EASTING: \_\_\_\_\_



RECORD:  
FD P.K./WASHER  
7/14/00, KPM  
SET N/SHI  
8/4/00, KPM



# O.D.O.T. DISTRICT 2 SURVEY OFFICE

PERSONNEL \_\_\_\_\_

REFERENCE NO. 1

SHEET 1 OF 10

NOTES Moser

H.C. Barnhisel

R.C. Centerbury

DATE 7-14-06

WEATHER Fair

TEMP. +78°F

ROUTE SR-108

COUNTY Fulton

TOWNSHIP Clinton

SECTION 12

T 6 N R 6 E

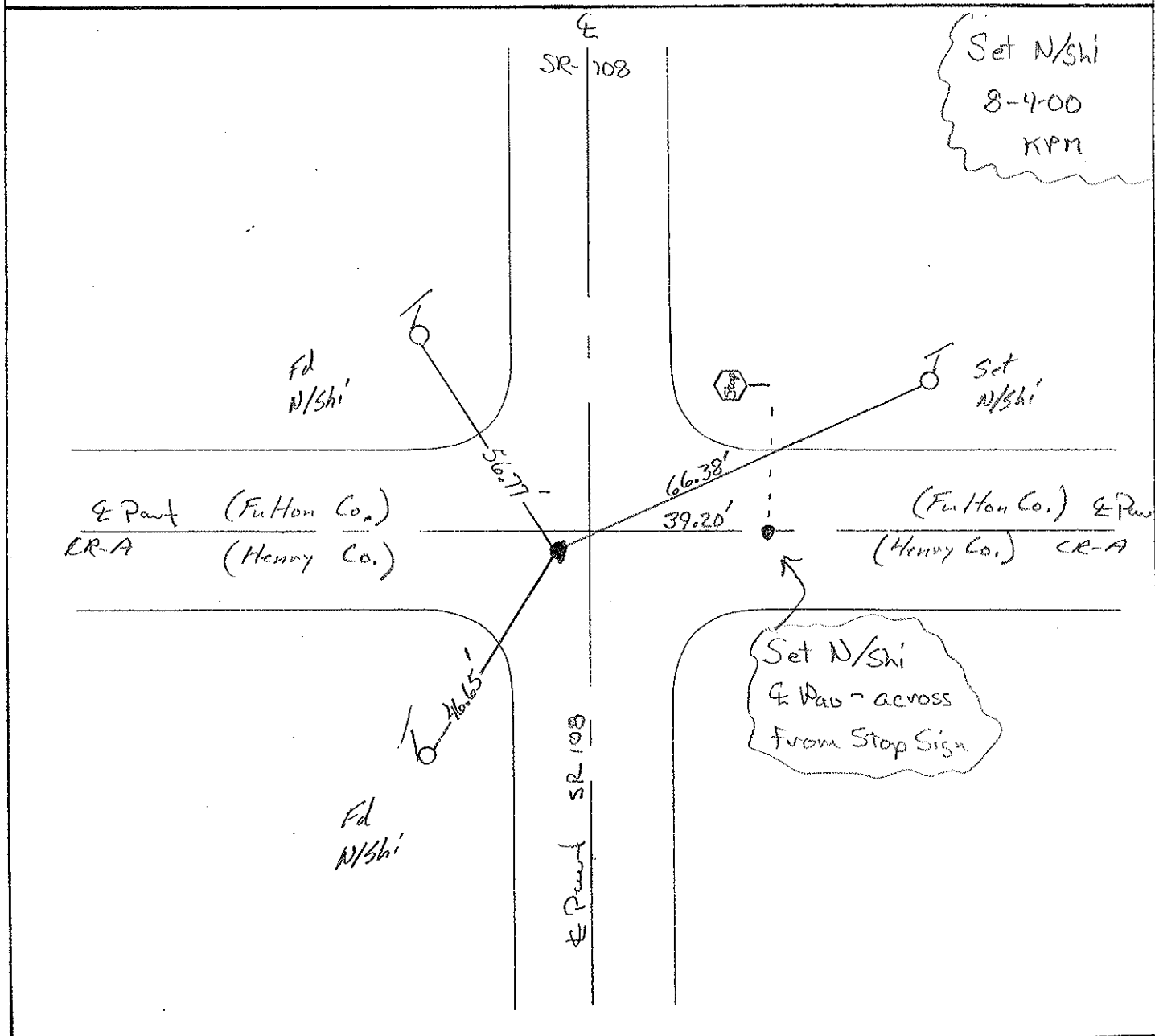
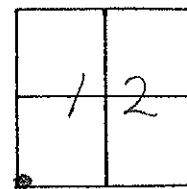
TYPE MONUMENT PK/W

ON SURFACE - ~~BELOW~~ Surface

LEFT - ~~PAV'T~~ - RIGHT 4.4'

- TO - EDGE PAVEMENT

S.L.M. 0+00



O.D.O.T. DISTRICT 2 SURVEY OFFICE

PERSONNEL \_\_\_\_\_

REFERENCE NO. 1 SHEET 1 OF \_\_\_\_\_

NOTES 1. Station

H.C. \_\_\_\_\_

R.G. J. Houschelder

DATE 12 Oct 98

WEATHER Cool

TEMP. 48°

ROUTE IL # 108

COUNTY Fulton

TOWNSHIP Clinton

SECTION 12

T \_\_\_\_\_ R \_\_\_\_\_

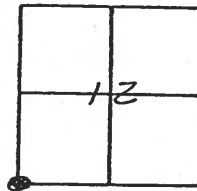
TYPE MONUMENT PK Nail

ON SURFACE - BELOW Surface

LEFT -  $\odot$  PAV'T. - RIGHT \_\_\_\_\_

TO \_\_\_\_\_ EDGE PAVEMENT

S.L.M. 0+00



SLM  
1200+43

OK 616189 I.R.S.

4.4 LT  $\odot$

7.1 LT EOP

ON  $\odot$  E & W ROADS

VAN DUSEN M

CORDES HC

SCOUAR RC

8-9-94

CLOUDY

+55° F.

FD.

sh.



SGT SHI.

sh.

# 108

56.8 W

64.30 64.40

E Co.

Rt. "A"

46.69

OK

FD.

PK Nail

E 5 R

FUL. HEN. CO. LINE

Resurvey 2000

O.D.O.T. DISTRICT 2 SURVEY OFFICE

PERSONNEL

REFERENCE NO. 1

SHEET 1 OF     

NOTES 1. Stone

H.C. D. Curtis

R.C. J. Householder

DATE 19 Oct. 88

WEATHER Cool

TEMP. 48°

ROUTE SR #108

COUNTY Fulton

TOWNSHIP Clinton

SECTION 12

T      R     

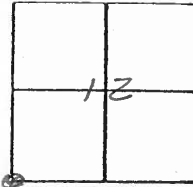
TYPE MONUMENT PK Nail

ON SURFACE - BELOW Surface

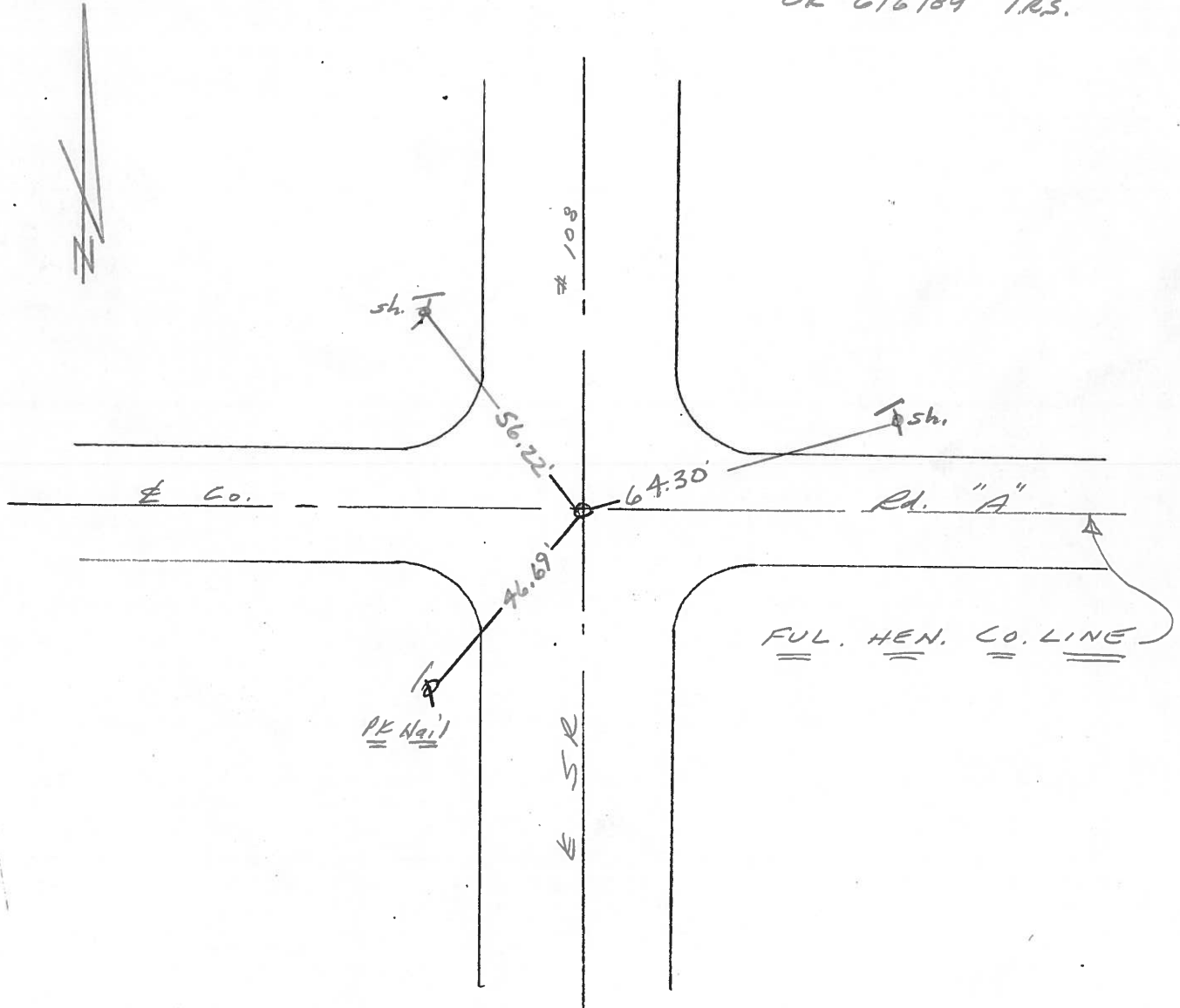
LEFT - ☉ PAV'T. - RIGHT     

     TO      EDGE PAVEMENT

S.L.M. 0+00



OK 6/6/89 I.R.S.



O.D.O.T. DISTRICT 2 SURVEY OFFICE

SHEET 1 OF

OK-10-17-80-Bowers

County Fulton S.R. 108

Date 29 Sept. 80

Township Clinton

Weather Fair

Section 12

Temp. 72°

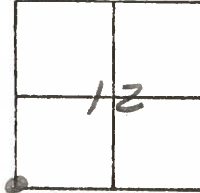
T N, R E

Personnel I. Stone

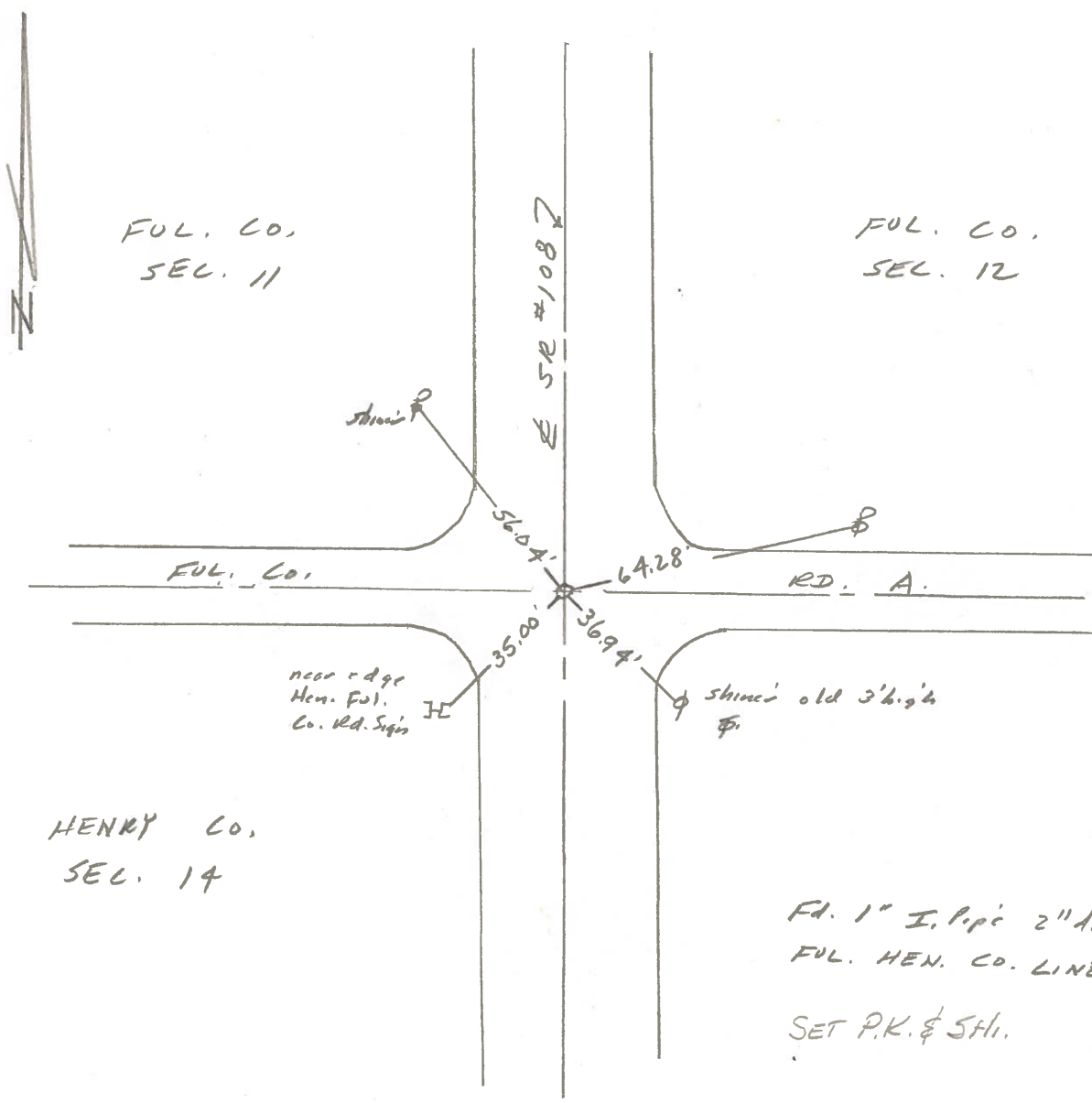
P. Newsc

R. Michaelak

D. Curtis



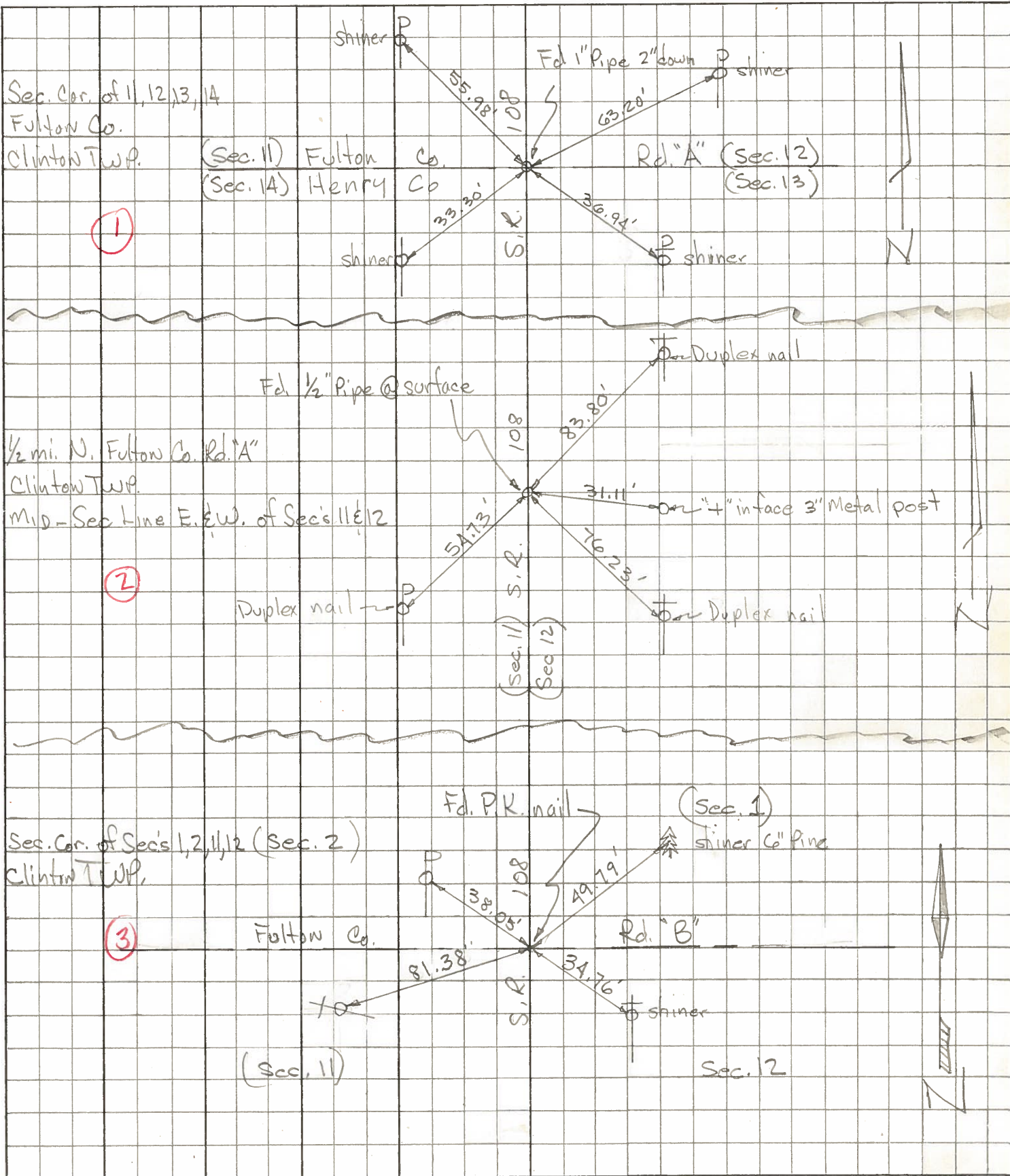
REF. NO. 1



PERSONNEL	TITLE	PERSONNEL	TITLE
Tomsic			
Neuser			
Granata			
Vanyo			

COUNTY Fulton DATE April 19, 1973  
 S. R. 108 WEATHER \_\_\_\_\_  
 SEC. \_\_\_\_\_ TEMP. \_\_\_\_\_

DESCRIPTION \_\_\_\_\_ LEFT \_\_\_\_\_ CENTER LINE \_\_\_\_\_ RIGHT \_\_\_\_\_ JOB NO. \_\_\_\_\_

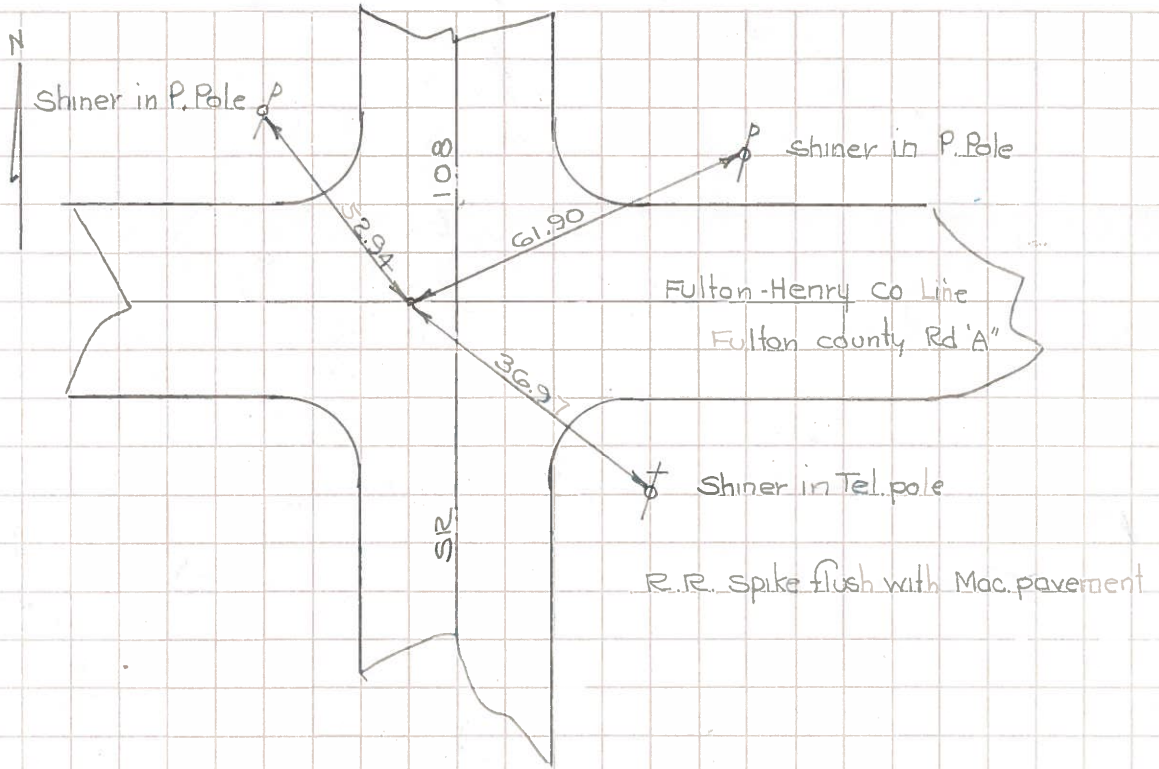




# COMPUTATION SHEET

STATE OF OHIO - DEPARTMENT OF HIGHWAYS - BUREAU OF LOCATION AND DESIGN \_\_\_\_\_ COLUMBUS, OHIO  
 BY Dennis Curtis - Granata - Omev DATE June 8, 1966 NO. \_\_\_\_\_ OF \_\_\_\_\_ SHEETS  
 COUNTY Fulton SECTION \_\_\_\_\_  
 DIV. NO. \_\_\_\_\_ S.R. 108 U.S.R. \_\_\_\_\_ I. R. \_\_\_\_\_  
 SUBJECT OF THIS SHEET Monument Ref. SR. 108

①



⑤

