

O.D.O.T. DISTRICT 2 SURVEY OFFICE (USE ONLY)

PERSONNEL

REFERENCE NO. 5 A

SHEET 8 OF 17

NOTES RHOADES

DATE 7/14/21

ROUTE SR 108

H.C. NIESE

WEATHER HUMID

COUNTY FULTON

R.C. AUBLE

TEMP. 81°

TOWNSHIP CLINTON

DWG BY WHITAKER PID 92361

SECTION 36

T 7 N R 6 E

TYPE MONUMENT P.K./WASHER

ON SURFACE - ~~BELOW~~ ON

OFFSET Q PAVEMENT ON LT : RT

10.3' TO LT EDGE PAVEMENT

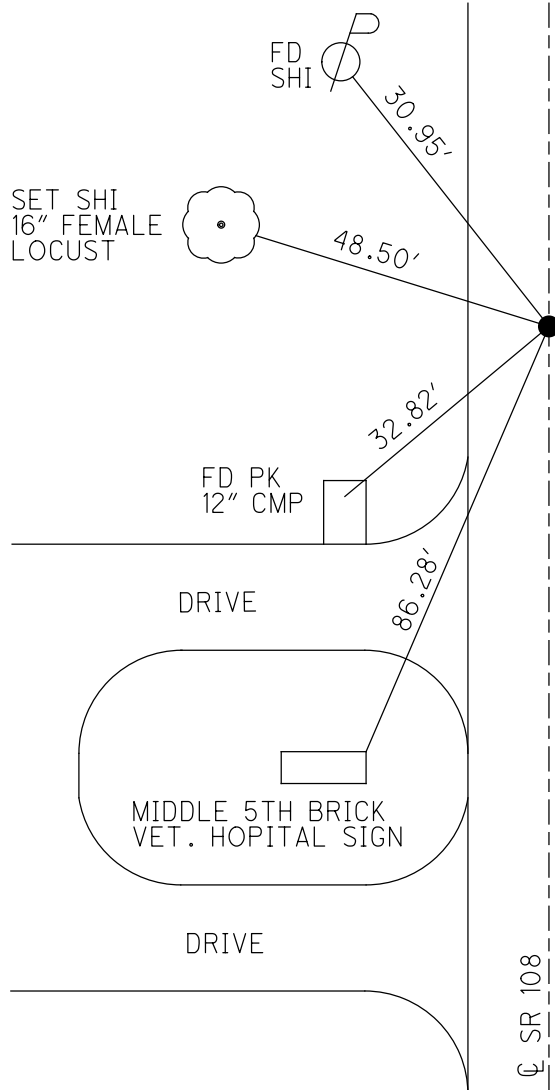
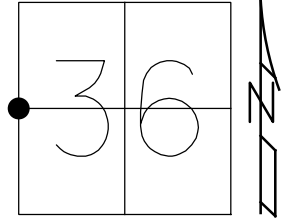
STATION: 133+31

HORIZ.DATUM: NAD83 (2011)

GEOID: 2012A

GRID: NORTHING: 680331.210

EASTING: 1521022.816



RECORD:
 FD P.K./WASHER
 7/14/00, KPM
 SET P.K./WASHER
 8/4/00, KPM
 FD P.K./WASHER
 REFA5
 9/16/19, JFO
 SET MAG/WASHER
 REFA5
 7/19/22, TDN

Q SR 108

O.D.O.T. DISTRICT 2 SURVEY OFFICE (USE ONLY)

PERSONNEL

REFERENCE NO. 5 A

SHEET 8 OF 17

NOTES MOSER DATE 7/14/00
 H.C. BARNHISEL WEATHER FAIR
 R.C. CANTERBURY TEMP. 78°

ROUTE SR 108
 COUNTY FULTON
 TOWNSHIP CLINTON
 SECTION 36
 T 7 N R 6 E

DWG BY NIESE PID _____

TYPE MONUMENT P.K./WASHER

ON SURFACE - ~~BELOW~~ ON

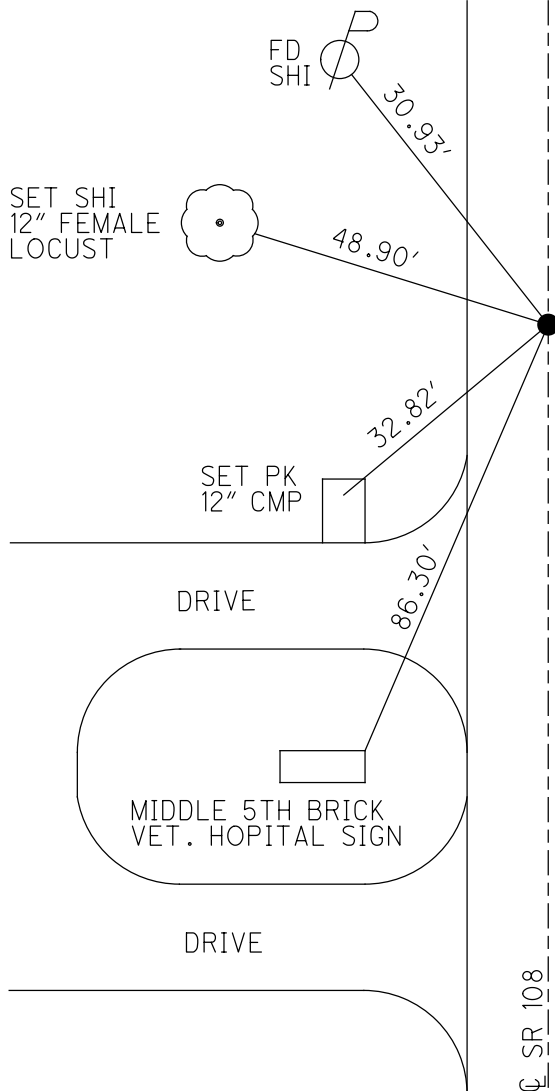
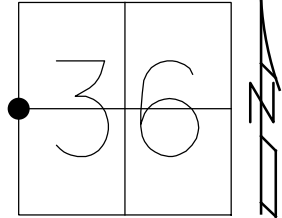
OFFSET Q PAVEMENT ON LT : RT

10.3' TO LT EDGE PAVEMENT

STATION: 133+31

HORZ.DATUM: _____ GEOID: _____

GRID: NORTHING: _____ EASTING: _____



RECORD:
 FD P.K./WASHER
 7/14/00, KPM
 SET P.K./WASHER
 8/4/00, KPM

Q SR 108

O.D.O.T. DISTRICT 2 SURVEY OFFICE

PERSONNEL

REFERENCE NO. 5A

SHEET 6 OF 10

NOTES Moser

H.C. Barnhisel

R.C. Cartonbunny

DATE 7-14-00

WEATHER Fair

TEMP. +78°F

ROUTE SR-108

COUNTY Fulton

TOWNSHIP Clinton

SECTION 36

T 7 N R 6 E

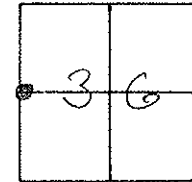
TYPE MONUMENT PK/W

ON SURFACE - BELOW Surface

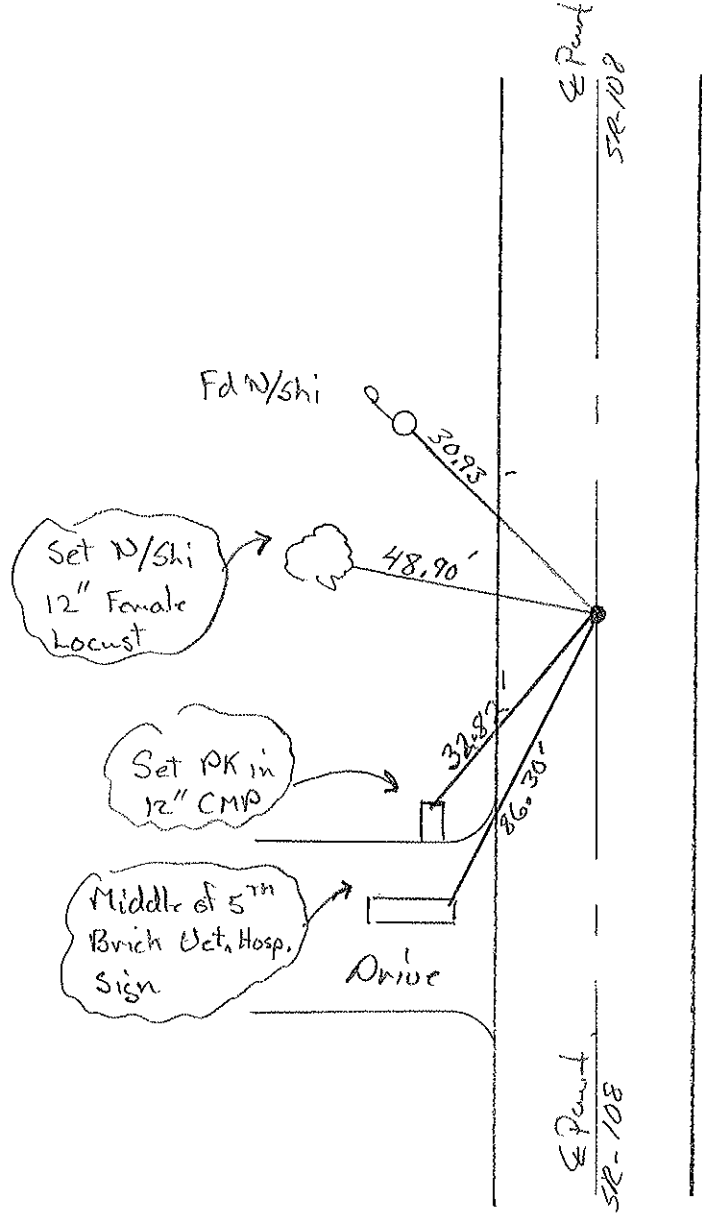
~~LEFT~~ - PAV'T - ~~RIGHT~~ E

10.3 TO LT EDGE PAVEMENT

S.L.M. 133 + 31



Set PK/W
8-4-00
KPM



O.D.O.T. DISTRICT 2 SURVEY OFFICE

PERSONNEL

REFERENCE NO. 5-A

SHEET 6 OF

NOTES 1. Stone

H.C. D. Curtis

DATE 19 Oct. 88

ROUTE SR #108

R.C. J. Hauscholder

WEATHER Cool

COUNTY Fulton

TEMP. 50°

TOWNSHIP Clinton

SECTION 36

T R

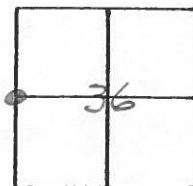
TYPE MONUMENT PK Nail

ON SURFACE - BELOW Surface

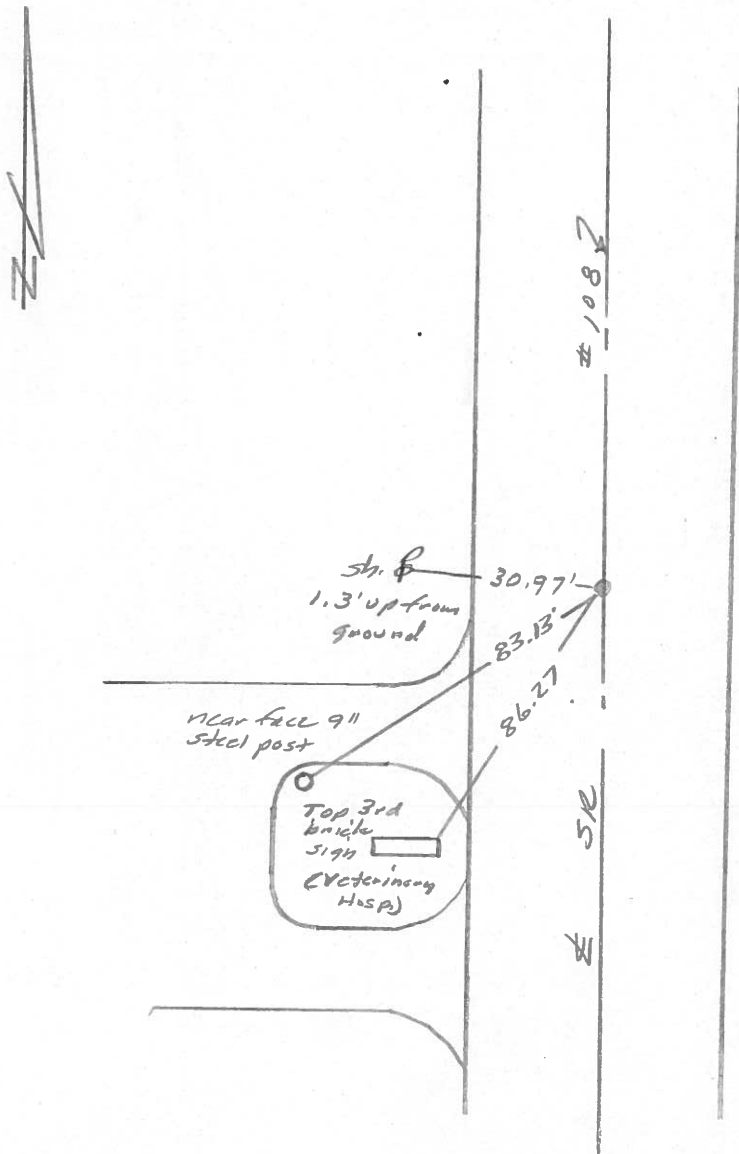
LEFT - & PAV'T. - RIGHT

 TO EDGE PAVEMENT

S.L.M. 132 + 79



OK 6/7/89 IRS



O.D.O.T. DISTRICT 2 SURVEY OFFICE

SHEET 6 OF

County Fulton S.R. 108

Township Clinton

Section 36

T N, R E

Personnel P. Stone

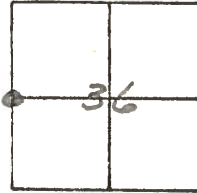
P. Nease

D. Cudis

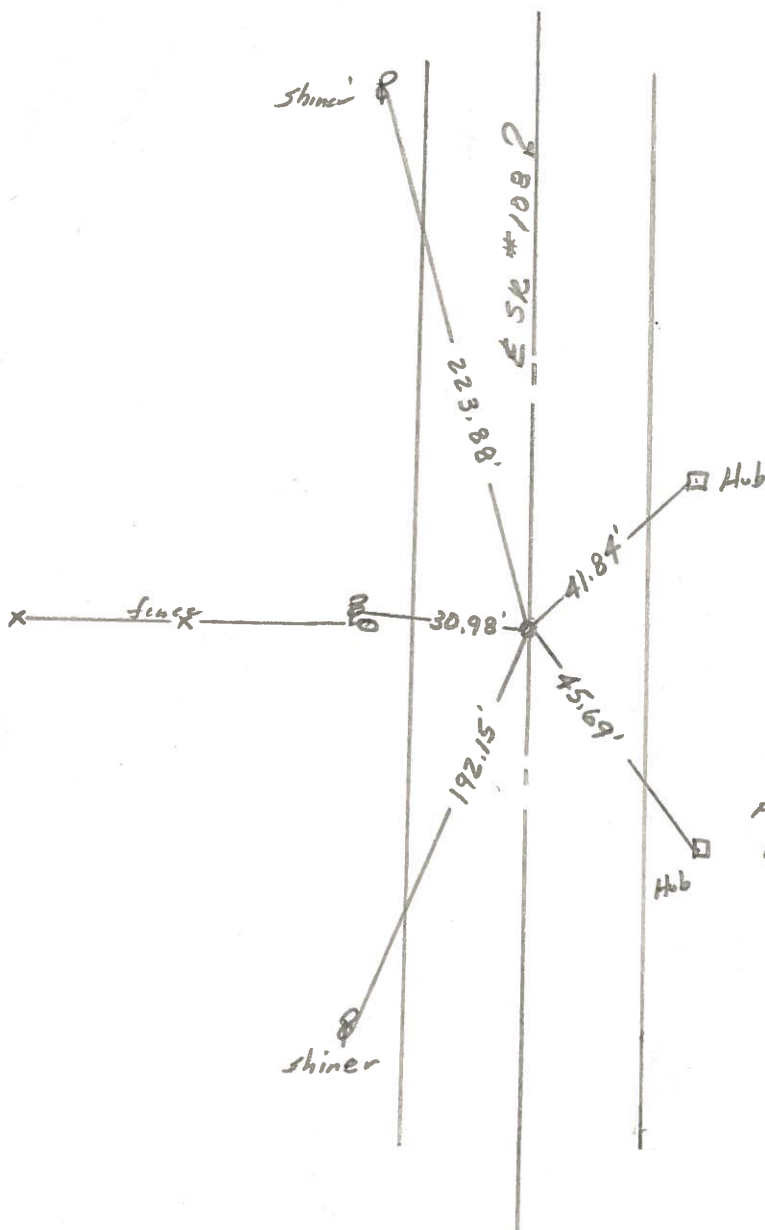
Date 30 Sept, 80

Weather Clear

Temp. 67°



REF. NO. 5-A



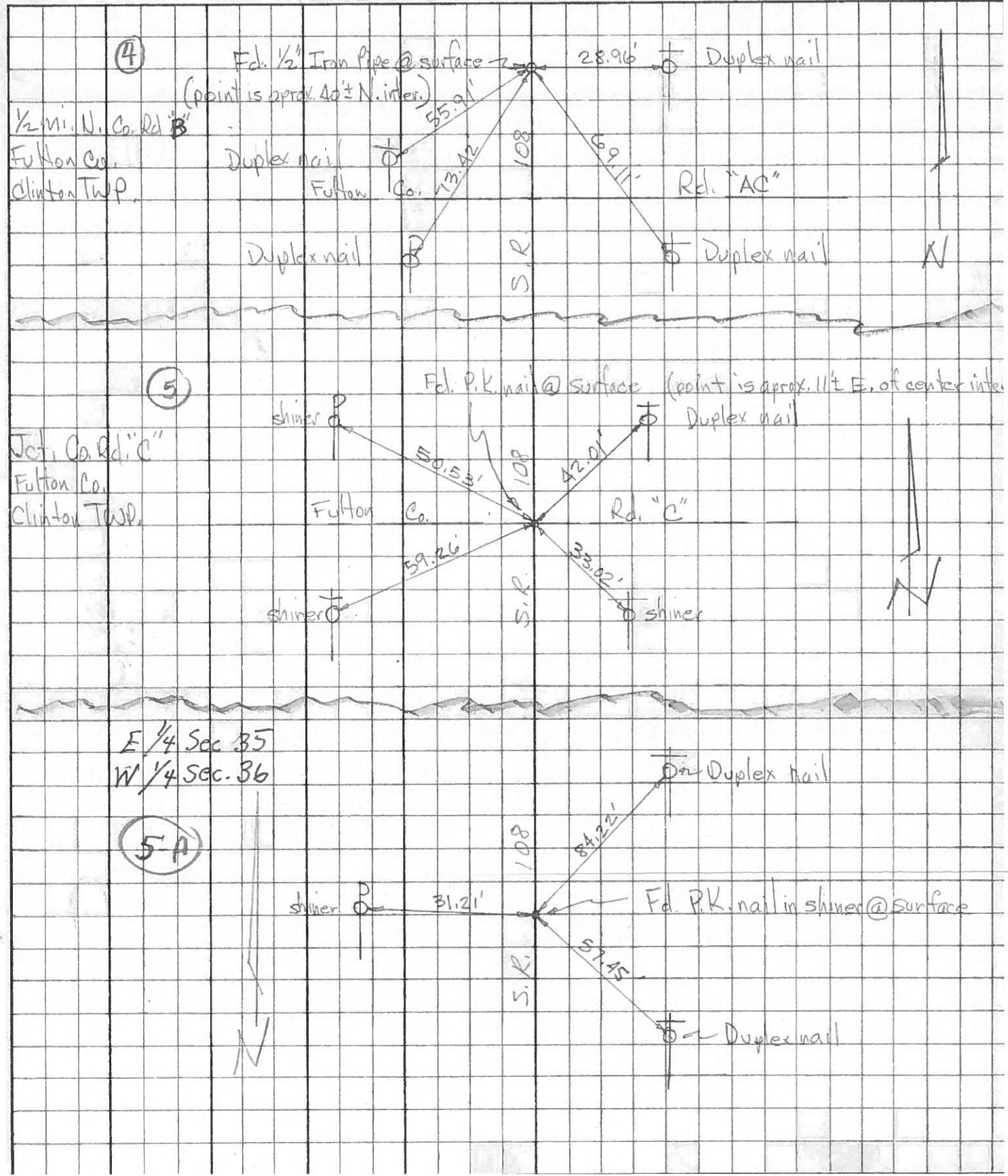
Fd. PK Nail 2 1/2" deep
w/14 co. sec. 36
10.3' to E. edge put,
10.7' to W. edge put,

SET P.K. & SHI.

PERSONNEL	TITLE	PERSONNEL	TITLE
Tomsic			
Neuser			
Granata			
Van yo			

COUNTY Fulton DATE April 20, 1973
 S. R. 108 WEATHER _____
 SEC. _____ TEMP. _____

DESCRIPTION _____ LEFT _____ CENTER LINE _____ RIGHT _____ JOB NO. _____



PERSONNEL TITLE PERSONNEL TITLE
 Red Beach
 Newcomb
 Knape
 Wise

COUNTY FULTON DATE 30 May 1970
 S. R. 108 WEATHER _____
 SEC Clinton Twp. T-7-N R-6E TEMP. _____

DESCRIPTION CONTROL POINTS JOB NO. _____

