

O.D.O.T. DISTRICT 2 SURVEY OFFICE (USE ONLY)

PERSONNEL

REFERENCE NO. 7 A

SHEET 12 OF 17

NOTES RHOADES

DATE 7/14/21

ROUTE SR 108

H.C. NIESE

WEATHER HUMID

COUNTY FULTON

R.C. AUBLE

TEMP. 73°

TOWNSHIP CLINTON

SECTION 25

DWG BY WHITAKER

PID 92361

T 7 N R 6 E

TYPE MONUMENT P.K. SHANK

ON SURFACE - ~~BELOW~~ ON

OFFSET Q PAVEMENT 0.2' LT : RT

10.5' TO RT EDGE PAVEMENT

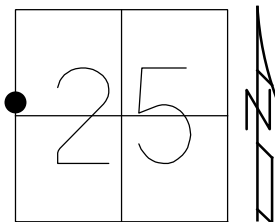
STATION: 188+15

HORZ.DATUM: NAD83 (2011)

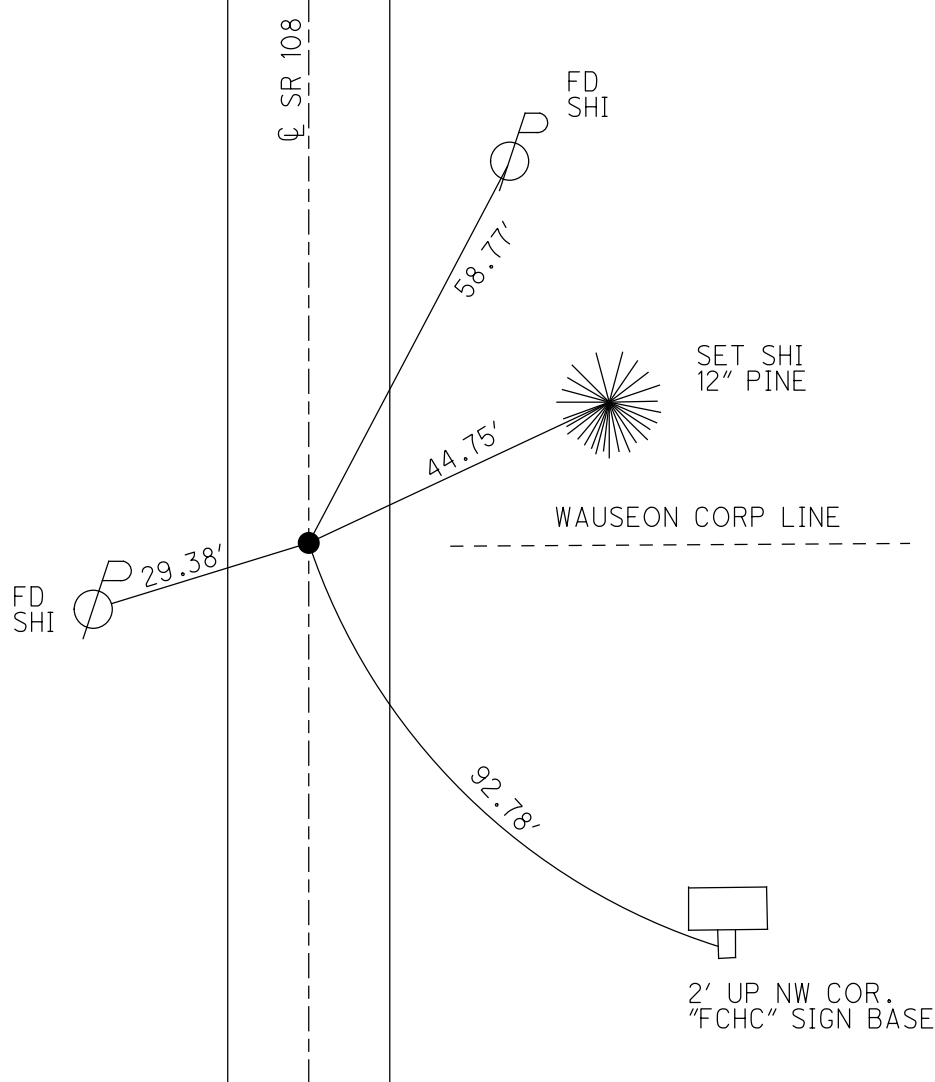
GEOID: 2012A

GRID: NORTHING: 685797.833

EASTING: 1521108.145



RECORD:
 FD P.K./WASHER
 7/14/00, KPM
 SET P.K./WASHER
 8/4/00, KPM
 FD P.K. SHANK
 REFA7
 9/16/19, JFO
 SET MAG/WASHER
 REFA7
 7/19/22, TDN



O.D.O.T. DISTRICT 2 SURVEY OFFICE (USE ONLY)

PERSONNEL _____

REFERENCE NO. 7 A

SHEET 12 OF 17

NOTES MOSE DATE 7/14/00
 H.C. BARNHISEL WEATHER FAIR
 R.C. CANTERBURY TEMP. 78°

ROUTE SR 108
 COUNTY FULTON
 TOWNSHIP CLINTON
 SECTION 25
 T 7 N R 6 E

DWG BY NIESE PID _____

TYPE MONUMENT P.K./WASHER

ON SURFACE - ~~BELOW~~ ON

OFFSET 0.2' ~~LT~~ : RT

10.5' TO RT EDGE PAVEMENT

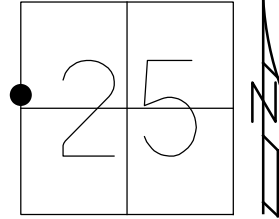
STATION: 188+15

HORZ.DATUM: _____

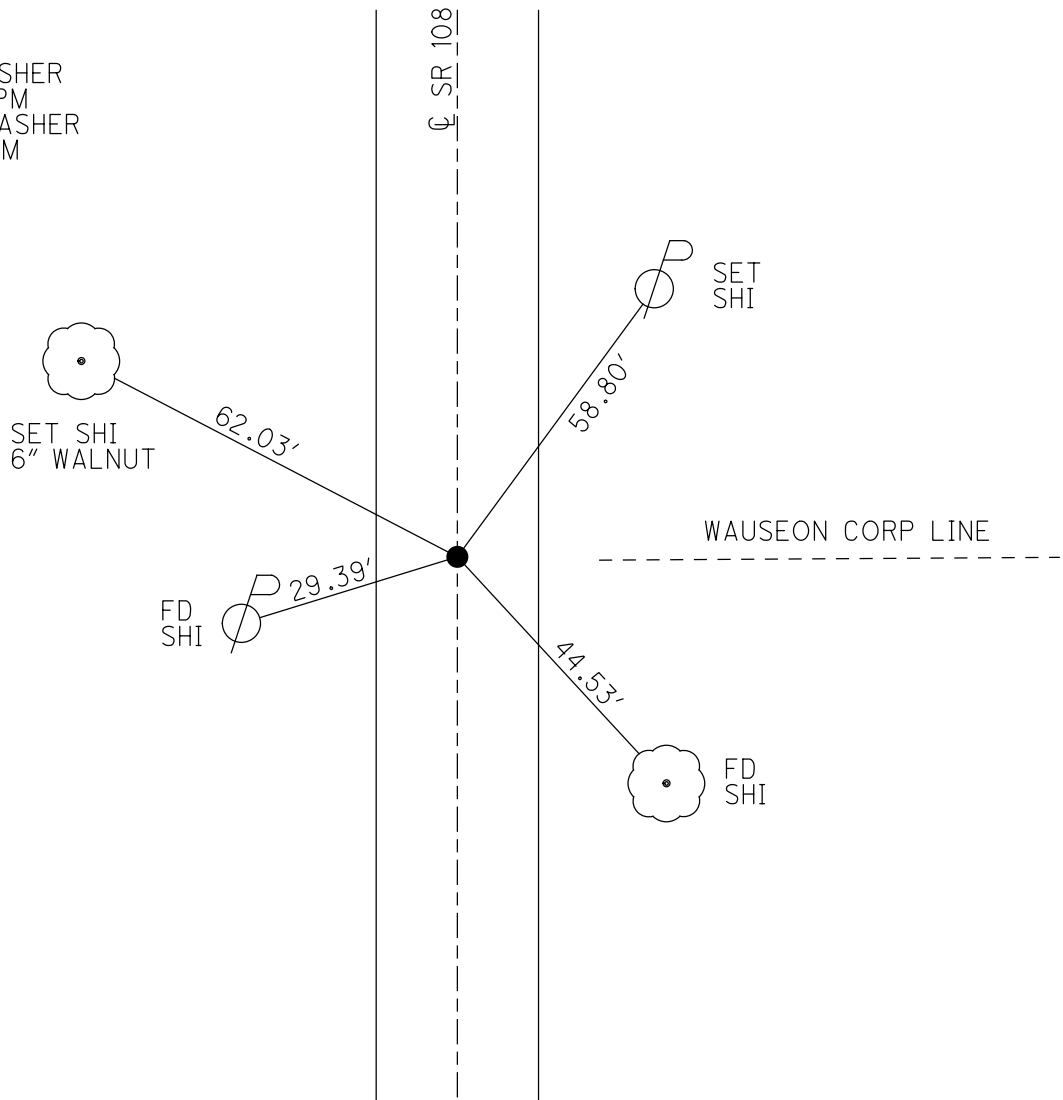
GEOID: _____

GRID: NORTHING: _____

EASTING: _____



RECORD:
 FD P.K./WASHER
 7/14/00, KPM
 SET P.K./WASHER
 8/4/00, KPM



O.D.O.T. DISTRICT 2 SURVEY OFFICE

PERSONNEL _____

REFERENCE NO. 7-A

SHEET 9 OF 10

NOTES Moser

H.C. Barnhisel

R.C. Canterbury

DATE 7-11-00

WEATHER Fair

TEMP. 178°F

ROUTE SR-108

COUNTY Fulton

TOWNSHIP Clinton

SECTION 25

T 7 N R 6 E

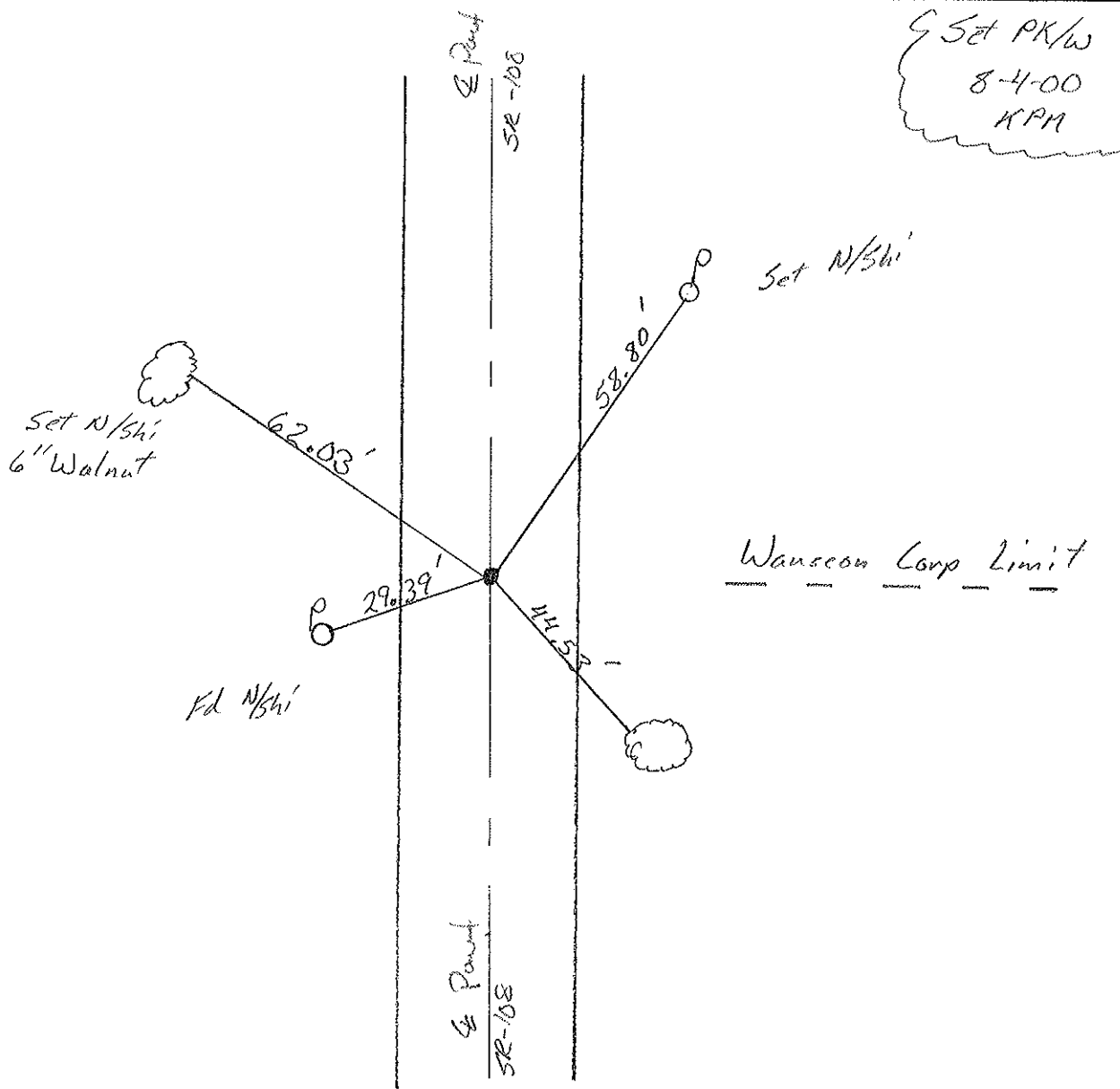
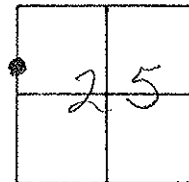
TYPE MONUMENT PK/w

ON SURFACE - ~~BENOW~~ Surface

~~LEFT OF PAVT~~ - (RIGHT) 0.2' Rt.

10.5' TO Rt. EDGE PAVEMENT

S.L.M. 188+15



O.D.O.T. DISTRICT 2 SURVEY OFFICE

PERSONNEL

REFERENCE NO. 7-A

SHEET 9 OF

NOTES 1. Stone

H.C. D. Curtis

R.C. J. Hauschalter

DATE 19 Oct. 88

WEATHER Cool

TEMP. 500

ROUTE SR#108

COUNTY Fulton

TOWNSHIP Clinton

SECTION 25

T R

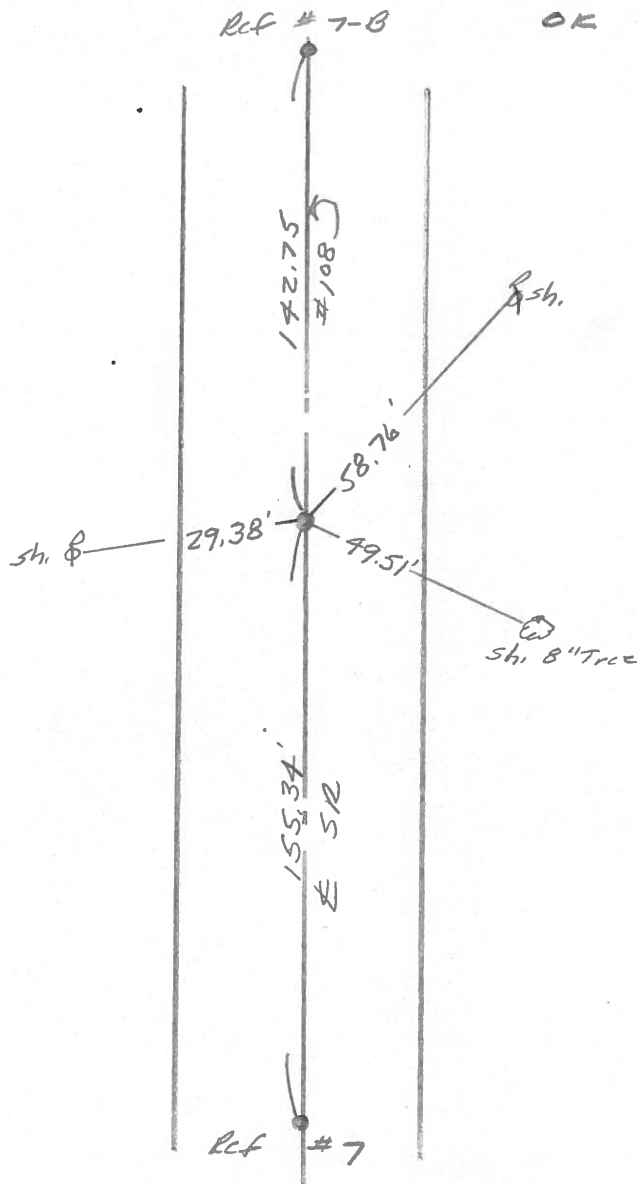
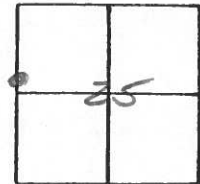
TYPE MONUMENT PK Nail

ON SURFACE - BELOW Surface

LEFT - \odot PAV'T. - RIGHT

 TO EDGE PAVEMENT

S.L.M. 187+46



O.D.O.T. DISTRICT 2 SURVEY OFFICE

SHEET 9 OF

County Fulton S.R. 108

Township Clinton

Section 25

T N, R E

Personnel I. Stone

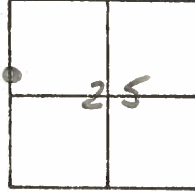
P. Neuser

D. Curtis

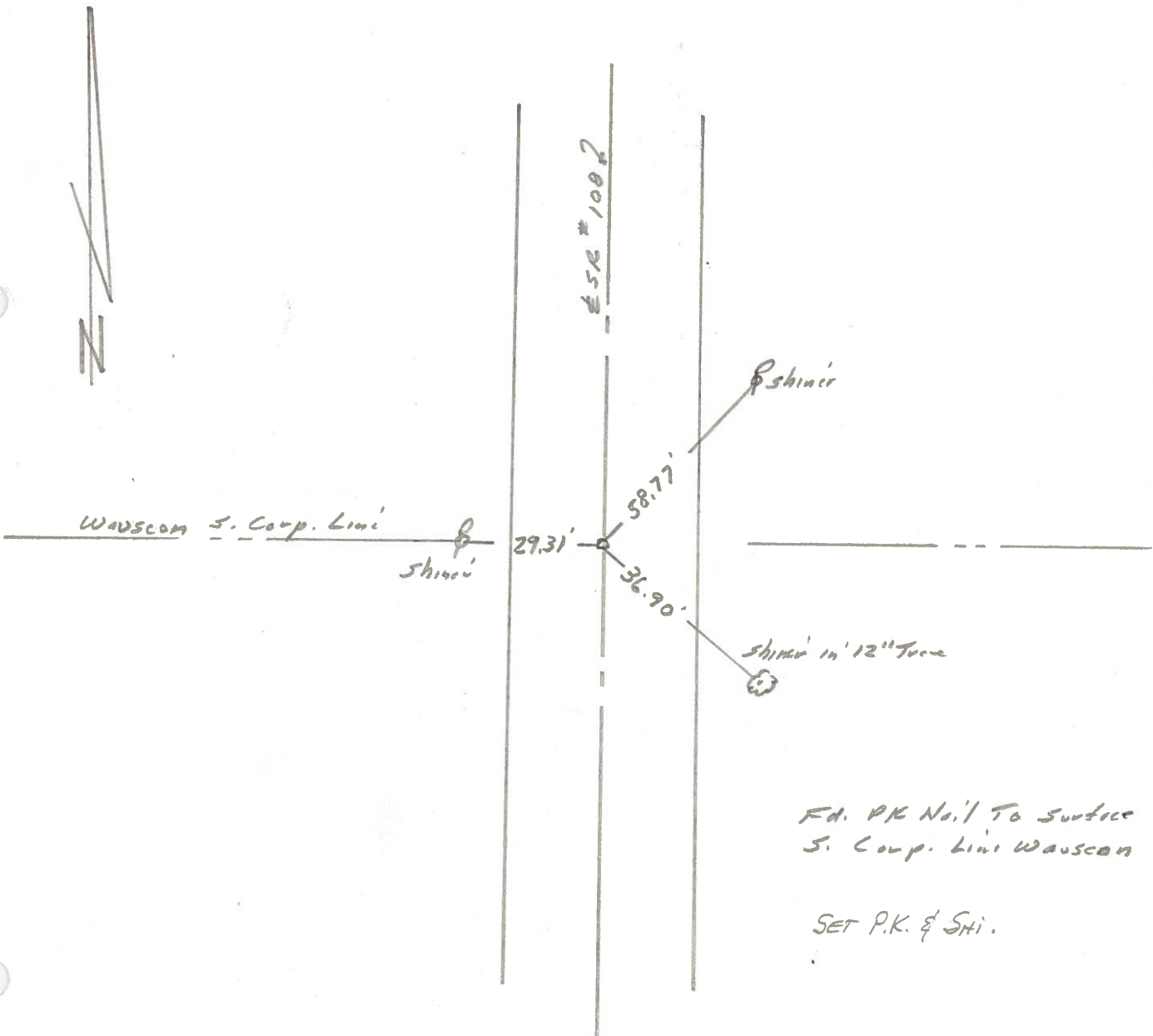
Date OK-10-23-80 - Bowers
30 Sept. 80

Weather Clear

Temp. 69°



REF. NO. 7-A



Rd. PK No. 1 To Surface
S. Corp. Line Wauscon

SET P.K. & SHI.

PERSONNEL	TITLE	PERSONNEL	TITLE	COUNTY	DATE	WEATHER	TEMP.
Tomsic				Fulton	April 20, 1973		
Neuser				S. R. 108			
Granata							
Vanyo							

