

O.D.O.T. DISTRICT 2 SURVEY OFFICE (USE ONLY)

PERSONNEL \_\_\_\_\_

REFERENCE NO. 7 D

SHEET 15 OF 17

NOTES BARNHISEL DATE 3/6/02  
 H.C. CANTERBURY WEATHER SUNNY  
 R.C. MOSER TEMP. 47°

ROUTE SR 108  
 COUNTY FULTON  
 TOWNSHIP CLINTON  
 SECTION 24  
 T 7 N R 6 E

DWG BY NIESE PID \_\_\_\_\_

TYPE MONUMENT P.K. NAIL

ON SURFACE - ~~BELOW~~ ON

OFFSET  $\text{C}$  PAVEMENT 4.0' ~~LT~~ : RT

- TO - EDGE PAVEMENT

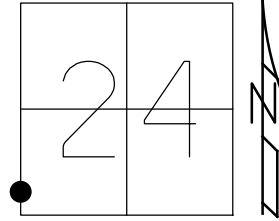
STATION: 218+22.78

HORZ.DATUM: \_\_\_\_\_

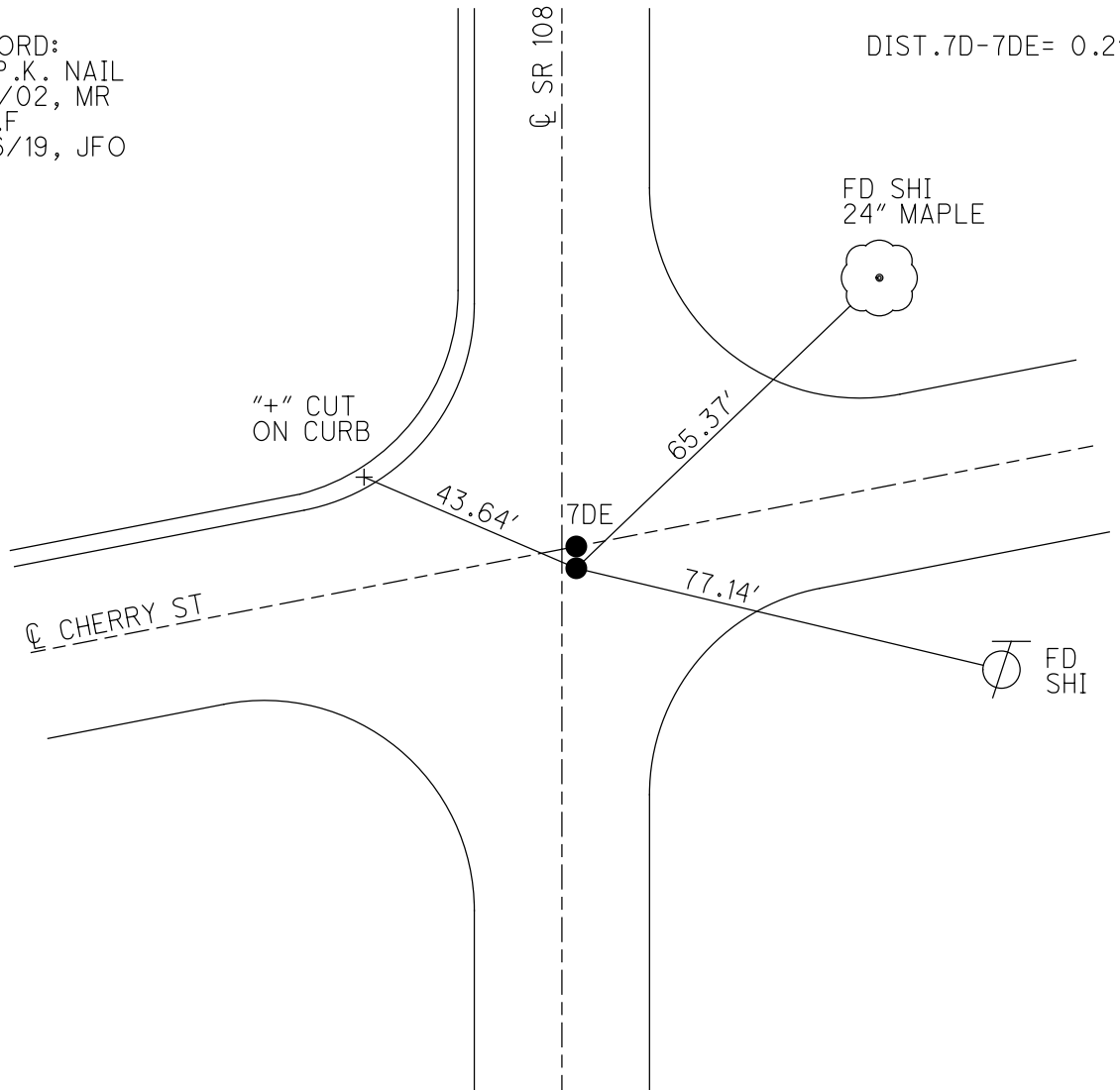
GEOID: \_\_\_\_\_

GRID: NORTHING: \_\_\_\_\_

EASTING: \_\_\_\_\_



RECORD:  
 FD P.K. NAIL  
 3/6/02, MR  
 D.N.F  
 9/16/19, JFO



DIST. 7D-7DE = 0.2'

FD SHI  
 24" MAPLE

"+" CUT  
 ON CURB

43.64'

65.37'

7DE

77.14'

$\text{C}$  CHERRY ST

FD  
 SHI

O.D.O.T. DISTRICT 2 SURVEY OFFICE (USE ONLY)

PERSONNEL

REFERENCE NO. 7 D

SHEET 15 OF 17

NOTES BARNHEISEL DATE 3/6/02

H.C. CANTERBURY WEATHER SUNNY

R.C. MOSER TEMP. 47°

ROUTE SR 108

COUNTY FULTON

TOWNSHIP CLINTON

SECTION 24

DWG BY NIESE PID \_\_\_\_\_

T 7 N R 6 E

TYPE MONUMENT P.K. NAIL

ON SURFACE - ~~BELOW~~ ON

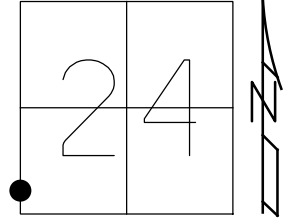
OFFSET  $\odot$  PAVEMENT 4.0'  $\perp$  : RT

- TO - EDGE PAVEMENT

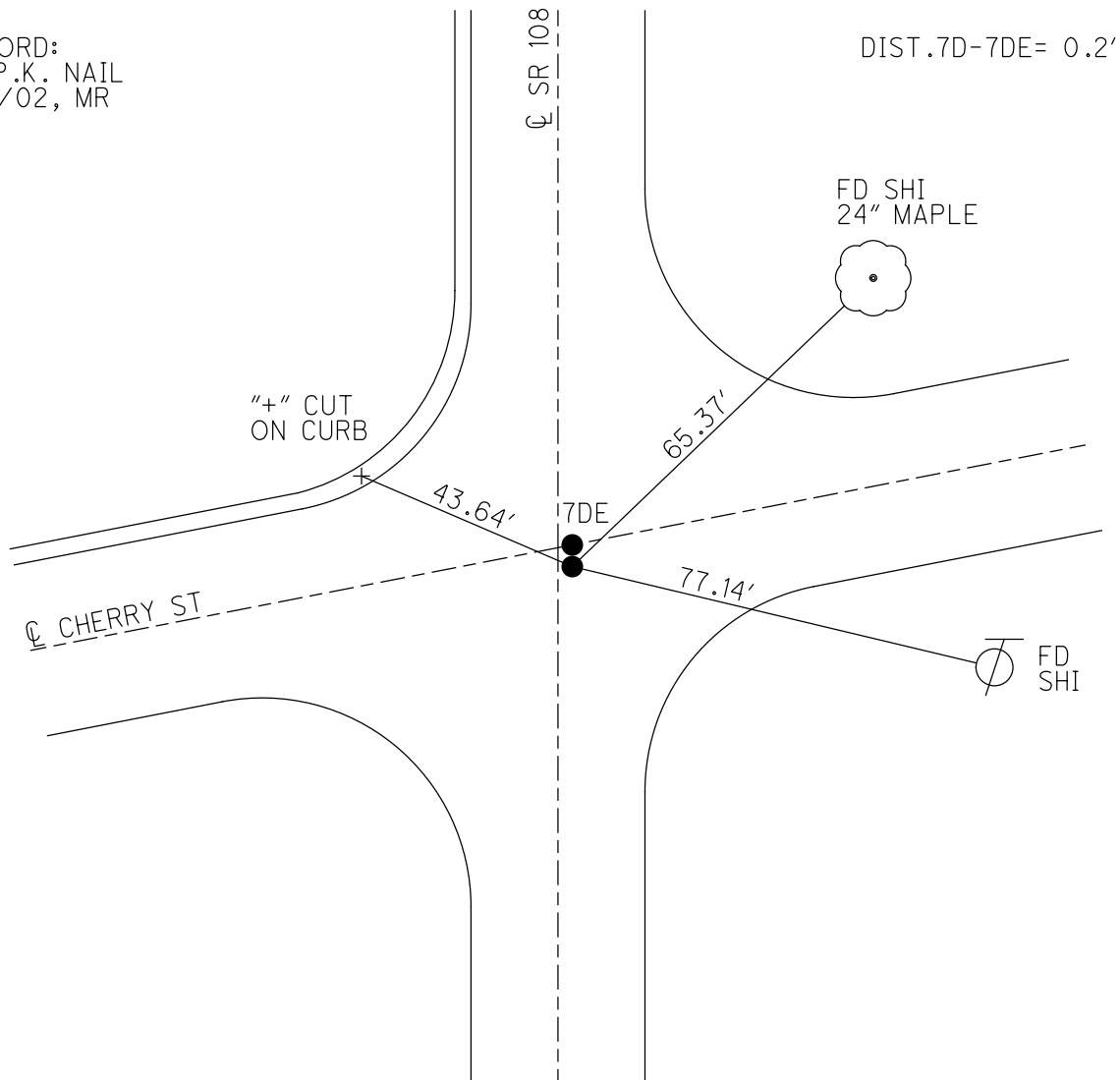
STATION: 218+22.78

HORZ. DATUM: \_\_\_\_\_ GEOID: \_\_\_\_\_

GRID: NORTHING: \_\_\_\_\_ EASTING: \_\_\_\_\_



RECORD:  
FD P.K. NAIL  
3/6/02, MR



# O.D.O.T. DISTRICT 2 SURVEY OFFICE

PERSONNEL \_\_\_\_\_

REFERENCE NO. 70 SHEET \_\_\_\_\_ OF \_\_\_\_\_

NOTES BARNHISEL

H.C. CANTERBURY

R.C. MOSEL

DATE 3-6-02

WEATHER SUNNY

TEMP. +47°

ROUTE 108

COUNTY FULTON

TOWNSHIP CLINTON

SECTION 23

T 7 N R 6 E

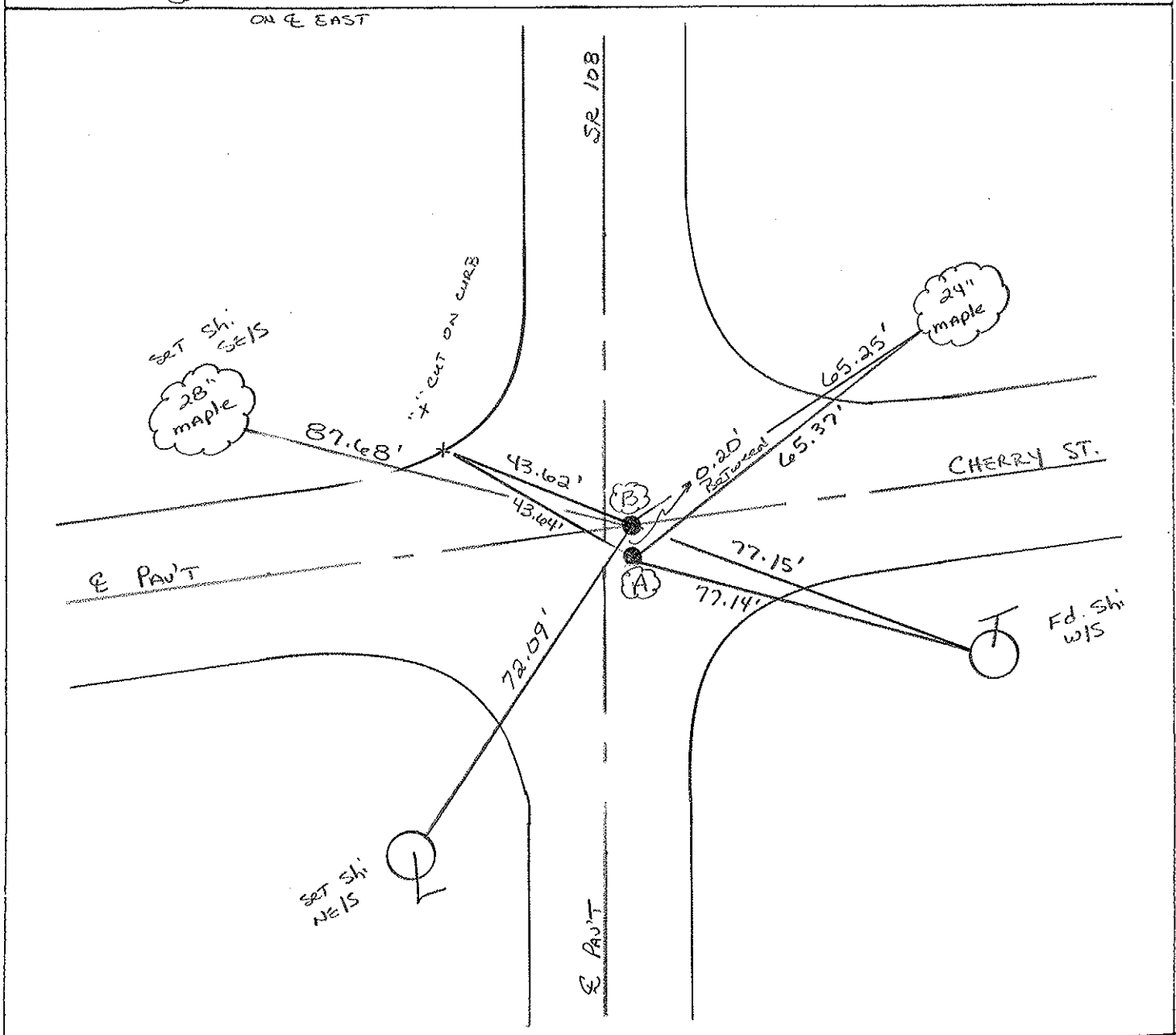
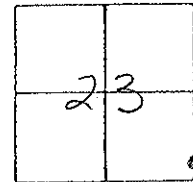
TYPE MONUMENT PK NAILS

ON SURFACE - ~~BELOW~~ YES

~~LEFT~~ - E PAV'T. - RIGHT 4.0'

— TO — EDGE PAVEMENT

S.L.M. (A) = 218+22.78



PERSONNEL	TITLE	PERSONNEL	TITLE	COUNTY	DATE
Longenbacher				Fulton	Aug. 12, 1958
Braese				S. R. 108 & 2	WEATHER Partly cloudy
Enyart				SEC. Wauscan	TEMP. 80+
Robinson					
Williams					
DESCRIPTION	Center Line Survey			JOB NO.	02292

