

O.D.O.T. DISTRICT 2 SURVEY OFFICE (USE ONLY)

PERSONNEL _____ REFERENCE NO. 7 FA SHEET 2 OF 6

NOTES BARNHISEL DATE 3/5/02 ROUTE SR 108
 H.C. CANTERBURY WEATHER SUNNY COUNTY FULTON
 R.C. MOSER TEMP. 32° TOWNSHIP CLINTON
 SECTION 23

DWG BY RHOADES PID _____

T 7 N R 6 E

TYPE MONUMENT P.K.NAIL

ON SURFACE - ~~BELOW~~ ON _____

OFFSET \varnothing PAVEMENT 4' ~~ET~~ : RT

- TO - EDGE PAVEMENT

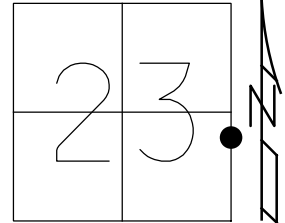
STATION: 234+22.95

HORZ.DATUM: _____

GEOID: _____

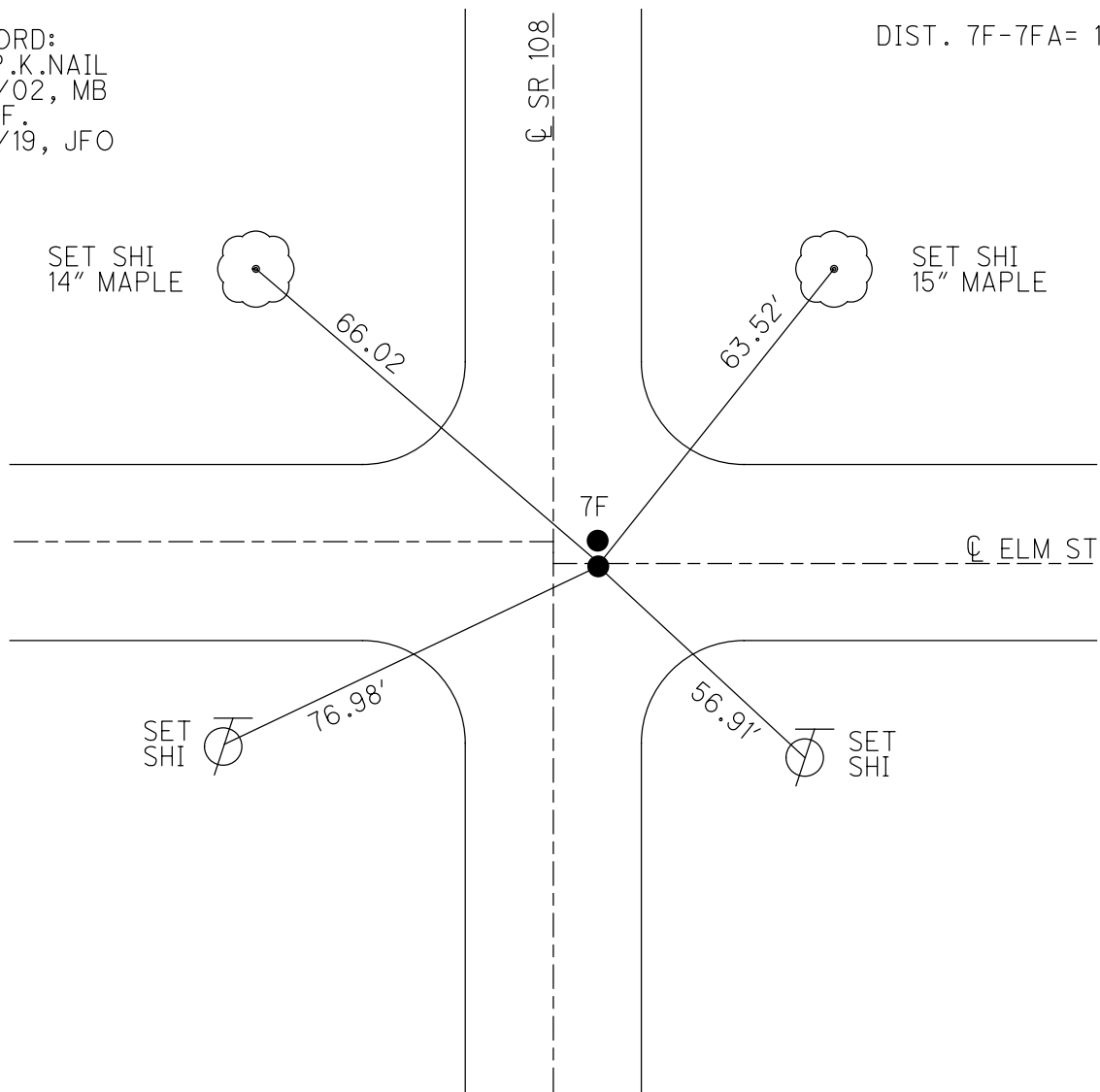
GRID: NORTHING: _____

EASTING: _____



RECORD:
 FD P.K.NAIL
 3/5/02, MB
 D.N.F.
 6/6/19, JFO

DIST. 7F-7FA= 1.85'



O.D.O.T. DISTRICT 2 SURVEY OFFICE

PERSONNEL _____

REFERENCE NO. 7F

SHEET _____ OF _____

NOTES BARNHISEL

H.C. CANTERBURY

DATE 3-5-02

ROUTE 108

R.C. MOSEK

WEATHER SUNNY

COUNTY FULTON

TEMP. +32°

TOWNSHIP CLINTON

SECTION 23

T 7 N R 6 E

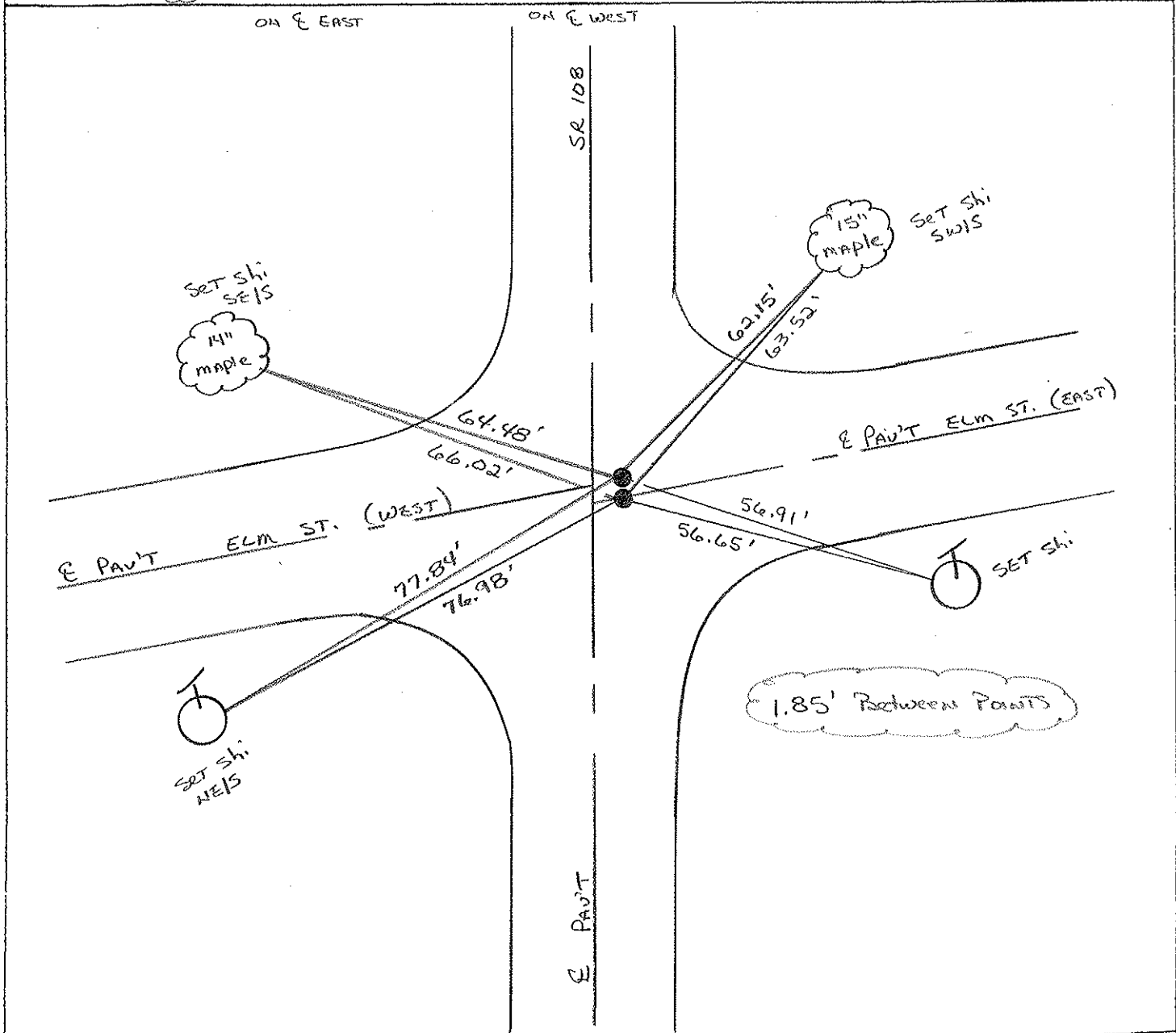
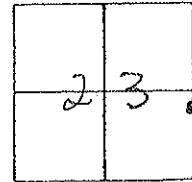
TYPE MONUMENT PK NAILS

ON SURFACE - ~~BELOW~~ yes

~~LEFT~~ - E PAV'T. - RIGHT 4'

- TO - EDGE PAVEMENT

S.L.M. (A) = 234+22.95 (B) = 234+24.80



PERSONNEL	TITLE	PERSONNEL	TITLE	COUNTY	DATE
Longenbacher				Fulton	Aug. 12, 1958
Braese				S. R. 108 & 2	WEATHER Partly cloudy
Enhart				SEC. Wauscon	TEMP. 80+
Robinson					
Williams					
DESCRIPTION	Center Line Survey				JOB NO. 02292

