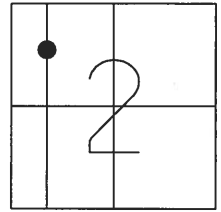


O.D.O.T. DISTRICT 2 SURVEY OFFICE (USE ONLY)

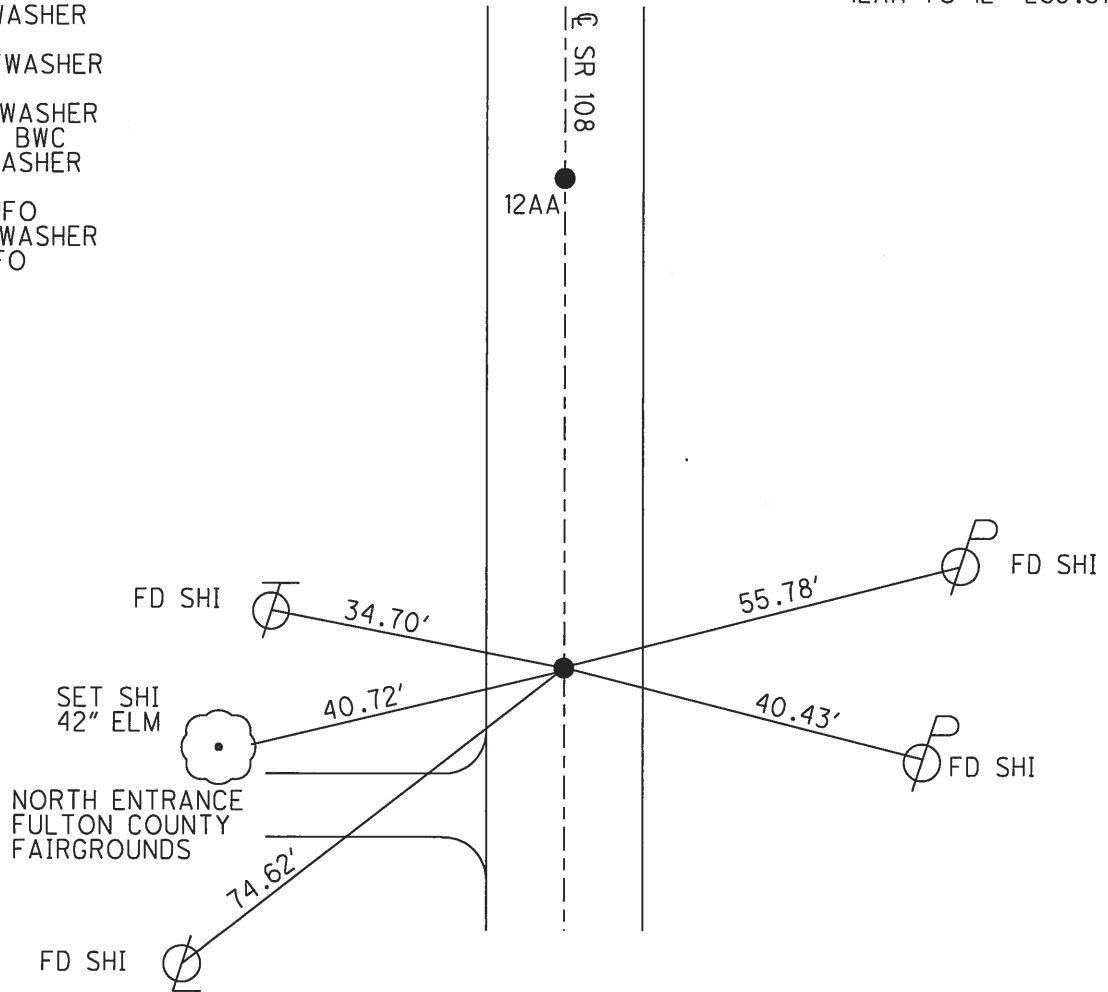
PERSONNEL _____ REFERENCE NO. 12 A SHEET 6 OF 26
 NOTES RHOADES DATE 5/1/18 ROUTE SR 108
 H.C. O'DONNELL WEATHER SUNNY COUNTY FULTON
 R.C. SEAMAN TEMP. 63° TOWNSHIP DOVER
 _____ SECTION 2
 _____ T 7 N R 6 E

TYPE MONUMENT MAG/WASHER
 ON SURFACE - ~~BELOW~~ ON
~~LEFT - C~~ PAV'T - ~~RIGHT~~ ON
12.1' TO LT EDGE PAVEMENT
 S.L.M. 433+07
 GPS: NORTHING: 708179.623 EASTING: 1517513.058



RECORD:
 FD P.K./WASHER
 5-12-92
 SET P.K./WASHER
 9-16-93
 SET MAG/WASHER
 10-30-07, BWC
 FD MAG/WASHER
 REFA12
 1-30-17, JFO
 SET MAG/WASHER
 8-7-18, JFO

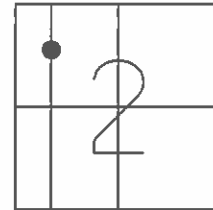
12AA TO 12= 269.61'



O.D.O.T. DISTRICT 2 SURVEY OFFICE (USE ONLY)

PERSONNEL	REFERENCE NO.	12 A	SHEET	4	OF	22
NOTES	HOMAN	DATE	6/18/07	ROUTE	SR 108	
H.C.	CORDES	WEATHER	SUNNY	COUNTY	FULTON	
R.C.	VIETH	TEMP.	90°	TOWNSHIP	DOVER	
				SECTION	2	
				T. 7 N	R. 6 E	

TYPE MONUMENT P.K./WASHER
 ON SURFACE - ~~BELOW~~ ON
~~LEFT - C~~ PAV'T - ~~RIGHT~~ ON
12.1' TO LT EDGE PAVEMENT
 S.L.M. 433+07
 GPS: NORTHING: 708179.64 EASTING: 1517512.984

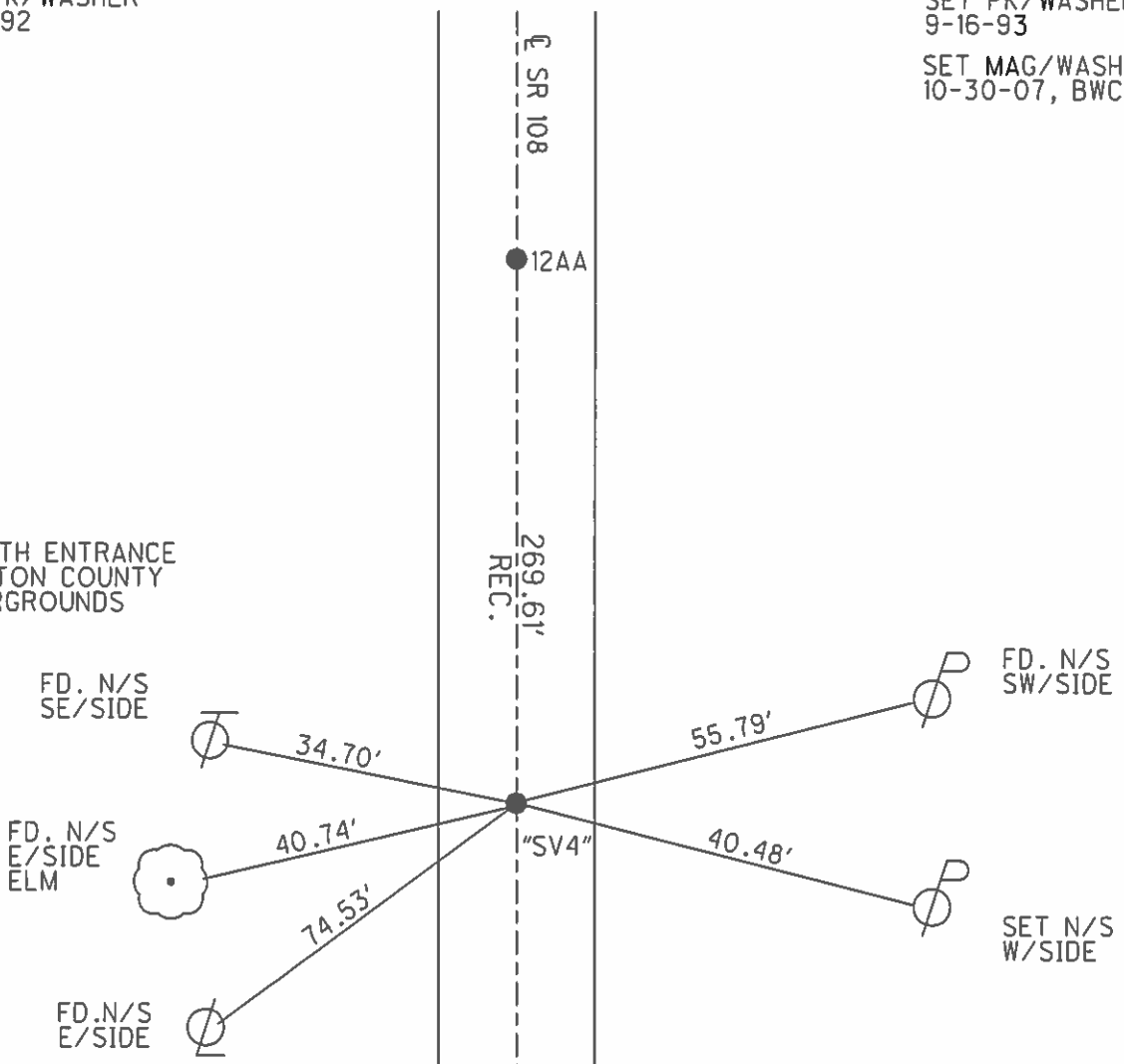


FD. PK/WASHER
5-12-92

SET PK/WASHER
9-16-93

SET MAG/WASHER
10-30-07, BWC

NORTH ENTRANCE
FULTON COUNTY
FAIRGROUNDS



O.D.O.T. DISTRICT 2 SURVEY OFFICE

PERSONNEL

REFERENCE NO. 12A

SHEET 4 OF 11

NOTES LOEHRKE

H.C. CURTIS

DATE 5-12-92

ROUTE 108

R.C. ROMETO

WEATHER CLEAR

COUNTY FULTON

TEMP. +75

TOWNSHIP DOVER

SECTION 2

Set. P.K. / WASHER

T. 7 N. R. 6 E

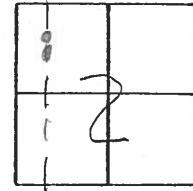
TYPE MONUMENT A - Sm R.R. Spike B - P.K. WASHER

ON SURFACE - ~~BELOW~~ Yes

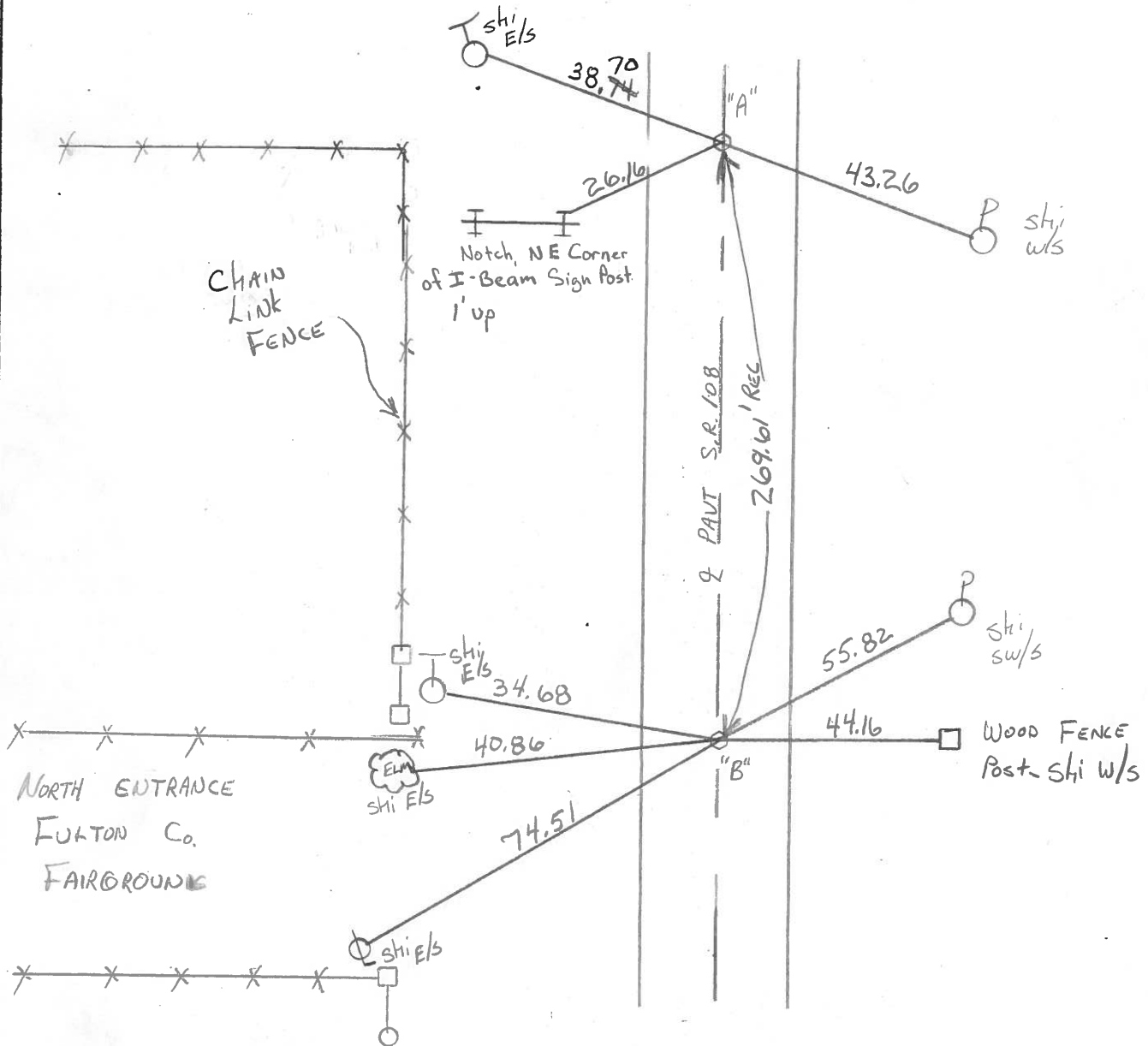
LEFT - 0 PAV'T. - RIGHT 0.3' Rt

12.1 TO Rt EDGE PAVEMENT

S.L.M. 433+07 & 435+77



1/4 mile South C.R. J



County FULTON S.R. 108

Date 4-8-82

Township DOVER

Weather cloudy

Section 2

Temp. +40°

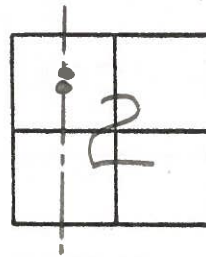
TIN, R6E

Personnel Hoffman

E

Crew

12-A



1/4 mile S. of Co. Rd. J = "A" = 3/4" I.D. PIPE 0.15' Below Surface, Project Stat 435+74
 12.0 TO W.E.P.
 12.2 TO E.E.P.

"B" = P.K. Rd. 0.11' Below Surface.
 12.2' TO W.E.P.
 12.2' TO E.E.P.

