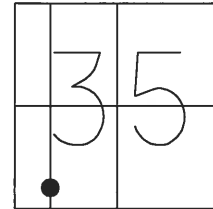


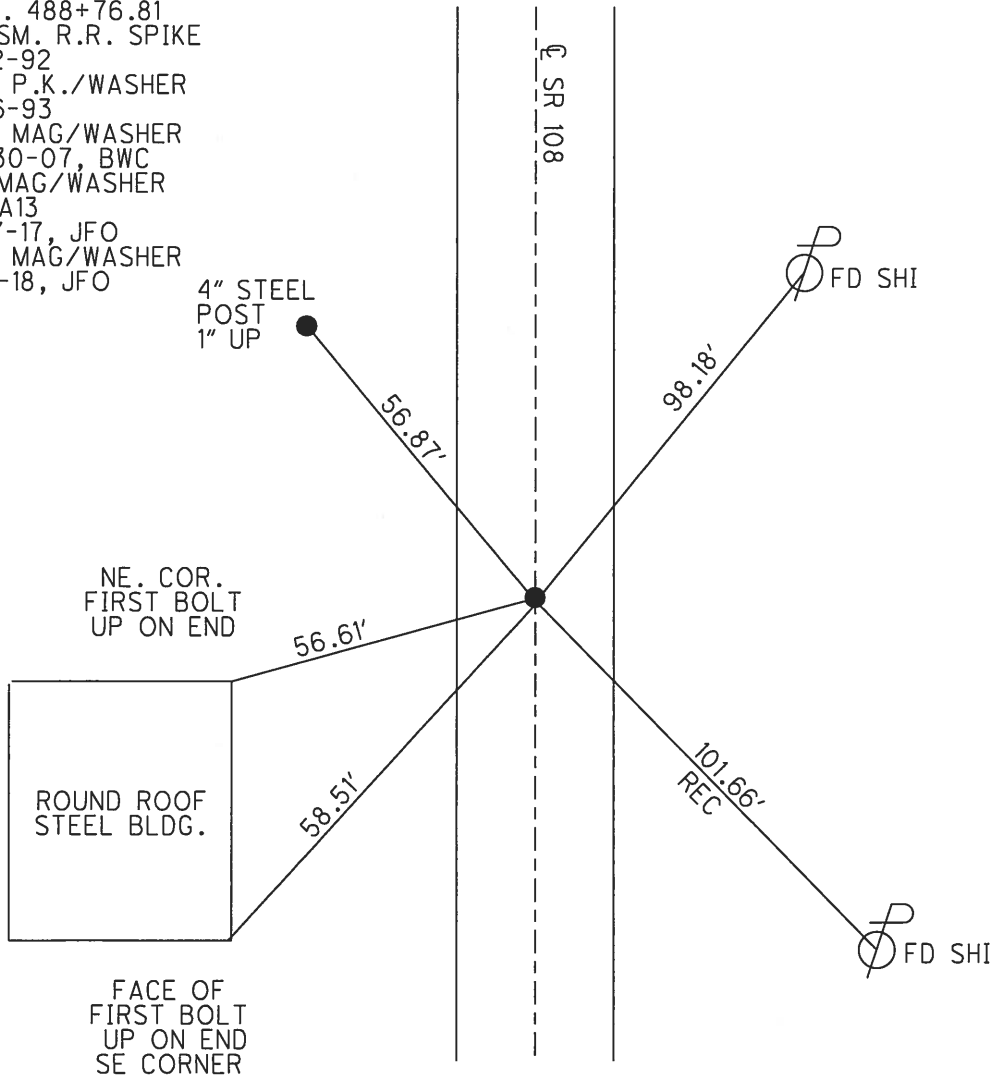
O.D.O.T. DISTRICT 2 SURVEY OFFICE (USE ONLY)

PERSONNEL \_\_\_\_\_ REFERENCE NO. 13 A SHEET 11 OF 26  
 NOTES RHOADES DATE 5/1/18 ROUTE SR 108  
 H.C. O'DONNELL WEATHER SUNNY COUNTY FULTON  
 R.C. SEAMAN TEMP. 63° TOWNSHIP DOVER  
 \_\_\_\_\_ SECTION 35  
 \_\_\_\_\_ T 8 N R 6 E

TYPE MONUMENT MAG/WASHER  
 ON SURFACE - ~~BELOW~~ ON  
~~LEFT~~ - ℄ PAV'T - RIGHT 2.6'  
9.3' TO RT EDGE PAVEMENT  
 S.L.M. 468+76  
 GPS NORTHING: 709749.654 GPS EASTING: 1517565.478



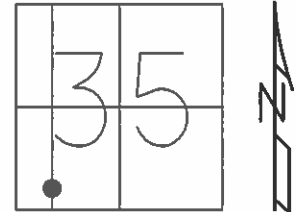
RECORD: P.I.  
 STA. 488+76.81  
 FD SM. R.R. SPIKE  
 5-12-92  
 SET P.K./WASHER  
 9-16-93  
 SET MAG/WASHER  
 10-30-07, BWC  
 FD MAG/WASHER  
 REFA13  
 1-27-17, JFO  
 SET MAG/WASHER  
 8-7-18, JFO



O.D.O.T. DISTRICT 2 SURVEY OFFICE (USE ONLY)

PERSONNEL \_\_\_\_\_ REFERENCE NO. 13 A SHEET 9 OF 22  
 NOTES CORDES DATE 6/19/07 ROUTE SR 108  
 H.C. HOMAN WEATHER CLOUDY/RAIN COUNTY FULTON  
 R.C. VIETH TEMP. 78° TOWNSHIP DOVER  
 \_\_\_\_\_ SECTION 35  
 \_\_\_\_\_ T 8 N R 6 E

TYPE MONUMENT \_\_\_\_\_ P.K./WASHER \_\_\_\_\_  
 ON SURFACE - ~~BELOW~~ \_\_\_\_\_ ON \_\_\_\_\_  
~~LEFT - C PAV'T~~ - RIGHT \_\_\_\_\_ 2.6' \_\_\_\_\_  
9.3' TO RT EDGE PAVEMENT  
 S.L.M. 468+79  
 GPS NORTHING: 709749.630 GPS EASTING: 1517565.418

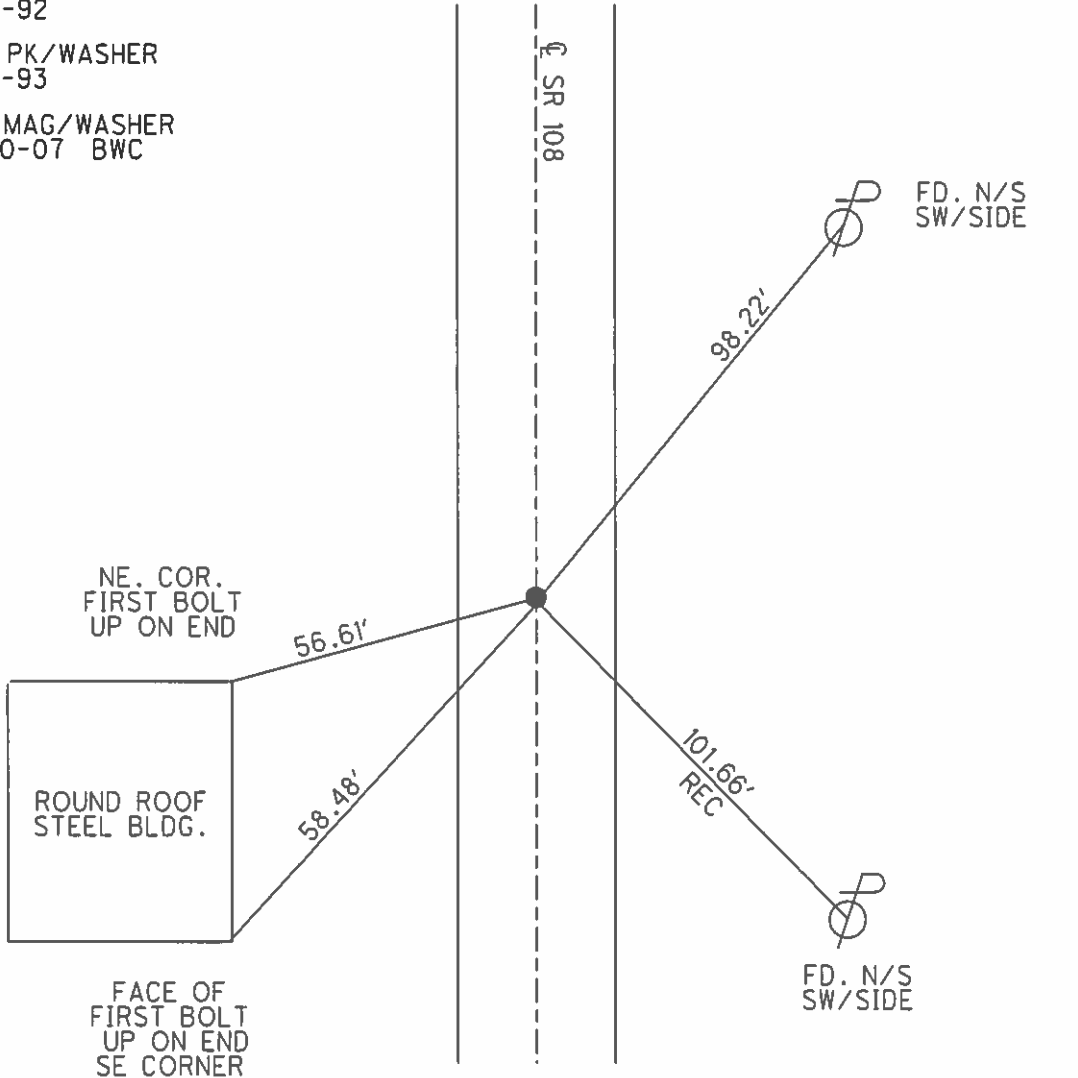


FD. SM RR SPK  
5-12-92

NOTE: RECORD PI 448+76.81

SET PK/WASHER  
9-16-93

SET MAG/WASHER  
10-30-07 BWC



# O.D.O.T. DISTRICT 2 SURVEY OFFICE

PERSONNEL

REFERENCE NO. 13-A

SHEET 7 OF 11

NOTES LOEHRKE

H.C. CURTIS

R.C. ROMETO

DATE 5-12-92

WEATHER Clear

TEMP. +80

ROUTE S.R. 108

COUNTY FULTON

TOWNSHIP Dover

SECTION 35

T 8 N R 6 E

Sat P.K./WASHER  
9-16-93  
e.l.

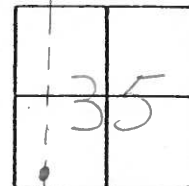
TYPE MONUMENT Sm. R.R. Spike

ON SURFACE - BELOW Yes

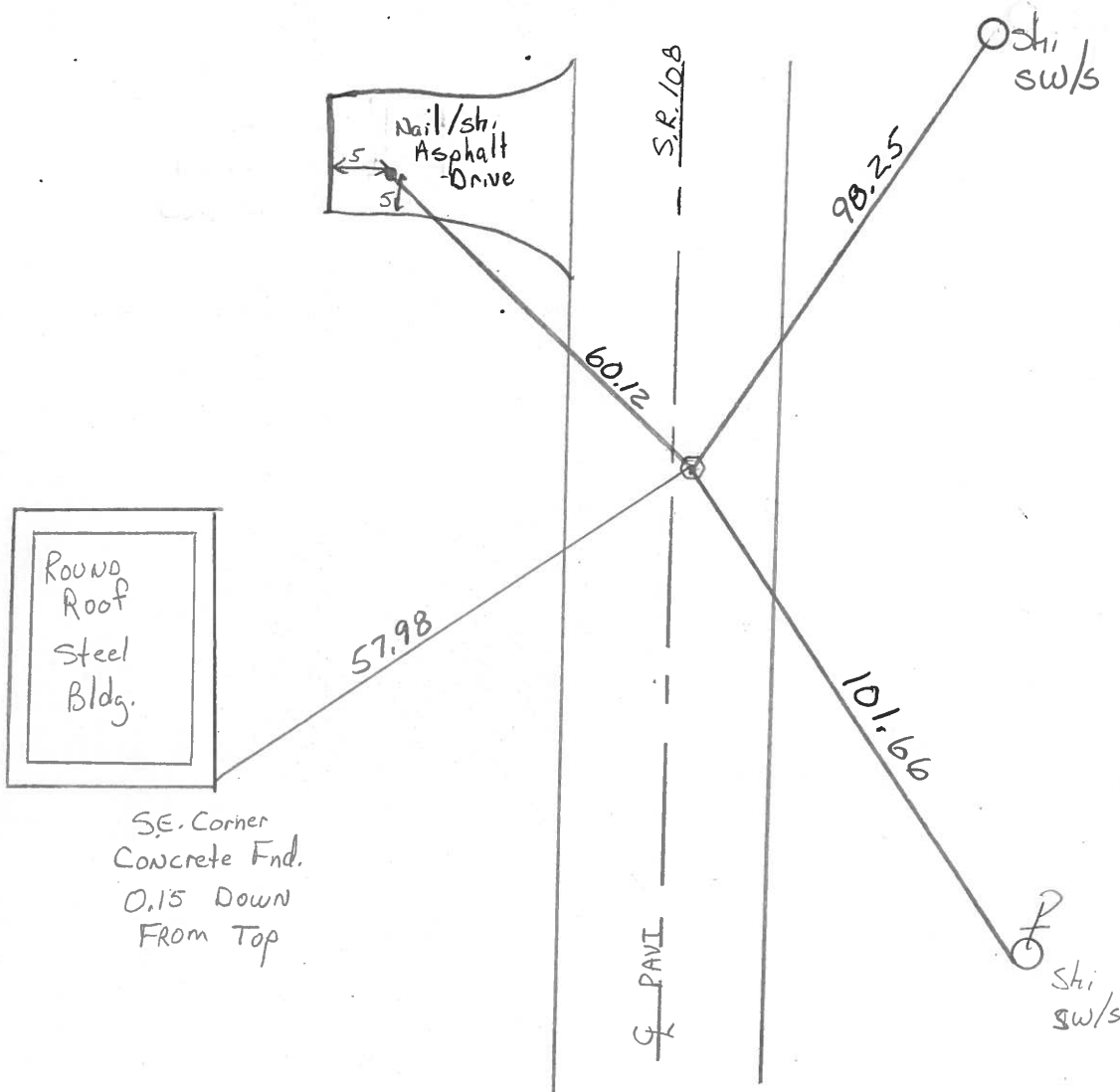
LEFT - 0 PAV'T. - RIGHT 2.6

9.5 TO RT EDGE PAVEMENT

S.L.M. 448+80



RECORD P.I. Sta 448+76.81



County Fulton S.R. 108

Township Dover

Section 35

T0N, R6E

Personnel Hoffman

F

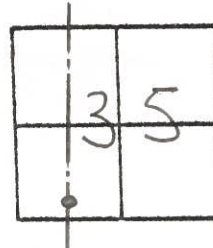
Crew

13-A

Date 4-13-82

Weather cloudy - Windy

Temp. +40°



Fd. R.R. Spk 0.12' Below Surface

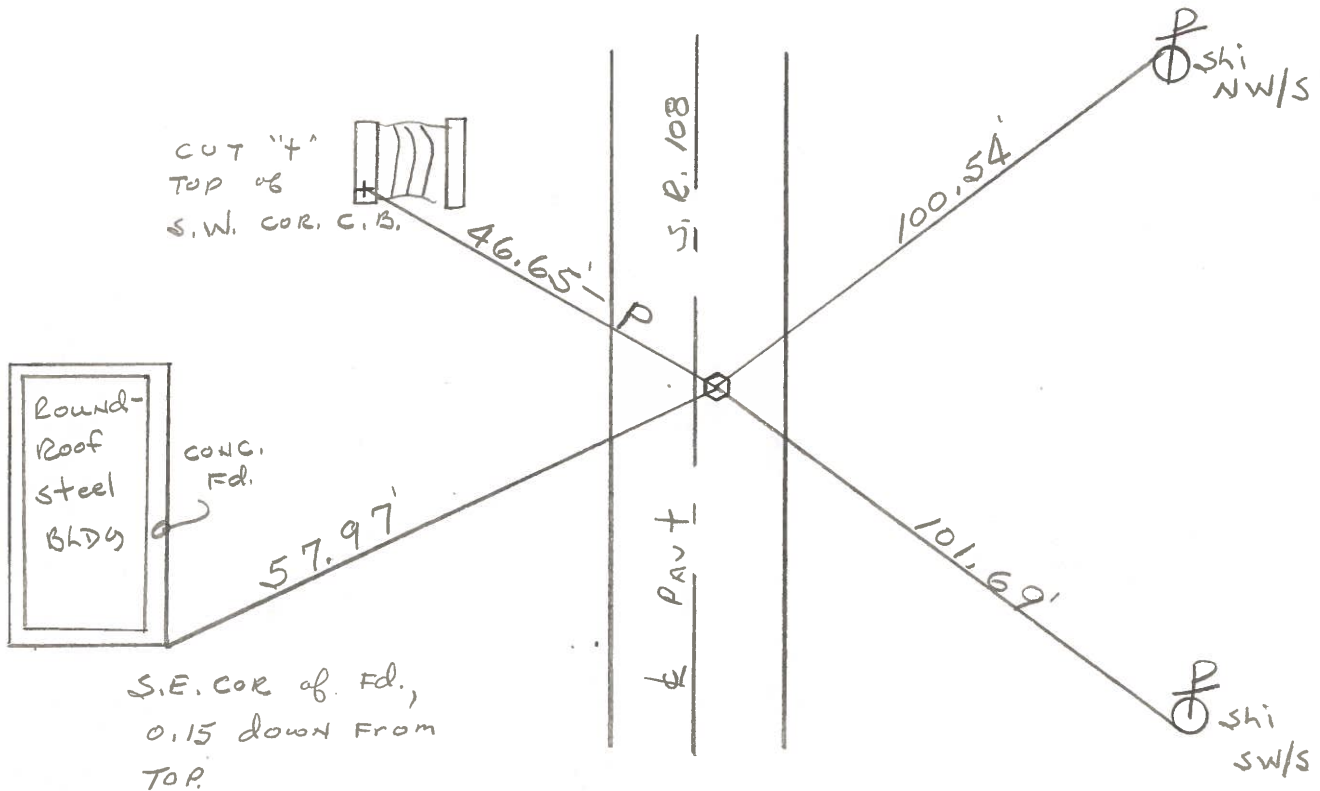
2.4' E. of & PAUT.

8.9' TO E. EP.

13.2' TO W. EP.

Project Sta ± 448+76

SET SMALL R.R. Spk  
5-11-82  
S.W.H.



P.I. Sta 448+76.81 - Rec.



PERSONNEL	TITLE	PERSONNEL	TITLE
Knape			
Armbruster			
Gunter			
Mahler			

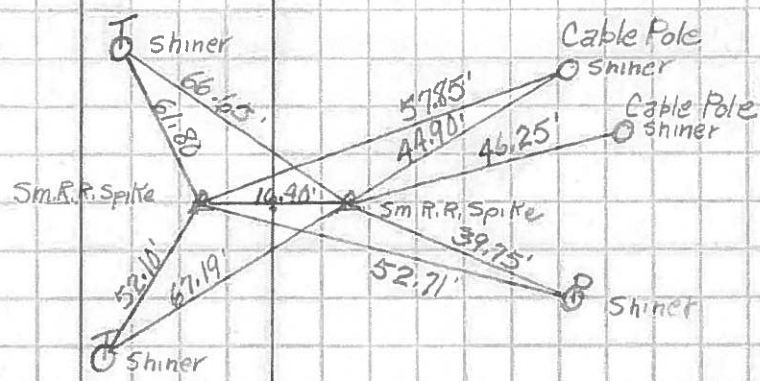
COUNTY Fulton DATE 11-3-61  
 S. R. # 108 WEATHER Rain  
 SEC. F. TEMP. 60°

DESCRIPTION 1/2 Mile N. of U.S. 20A to 1/4 Line Sec. 35 JOB NO. \_\_\_\_\_

LEFT CENTER LINE RIGHT

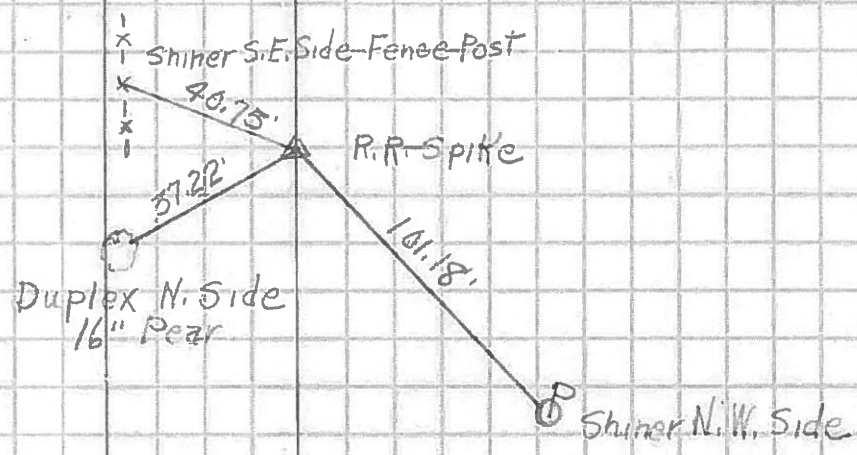
Sta. 446+27.50  
 Sec. 2 F. 35  
 Co. Rd. V.

(13)



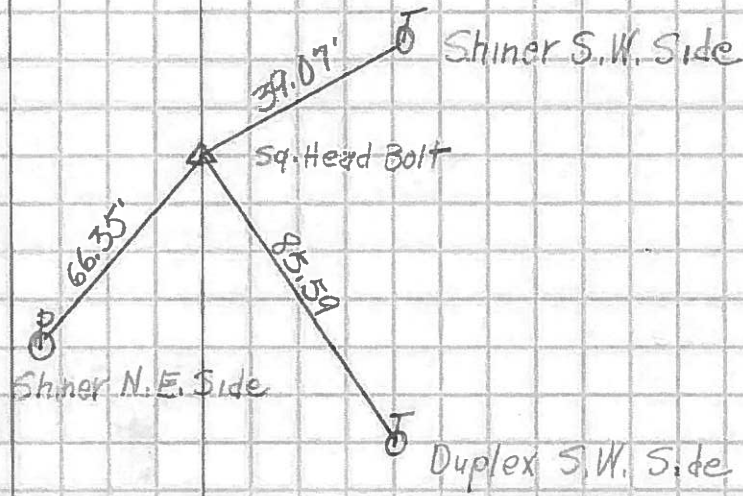
P.I. Sta. 448+76.81  
 249.83' North of  
 Co. Rd. V

(13A)



1/4 Line Sec. 35  
 Dorer Twp.

(14)



N



PERSONNEL TITLE PERSONNEL TITLE

COUNTY Fulton DATE 11-7-57

S. R. #108 WEATHER

SEC. F TEMP.

DESCRIPTION LEFT CENTER LINE RIGHT JOB NO.

11-3-6197. King

