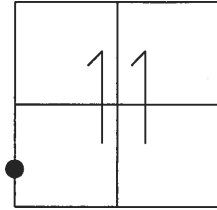


O.D.O.T. DISTRICT 2 SURVEY OFFICE (USE ONLY)

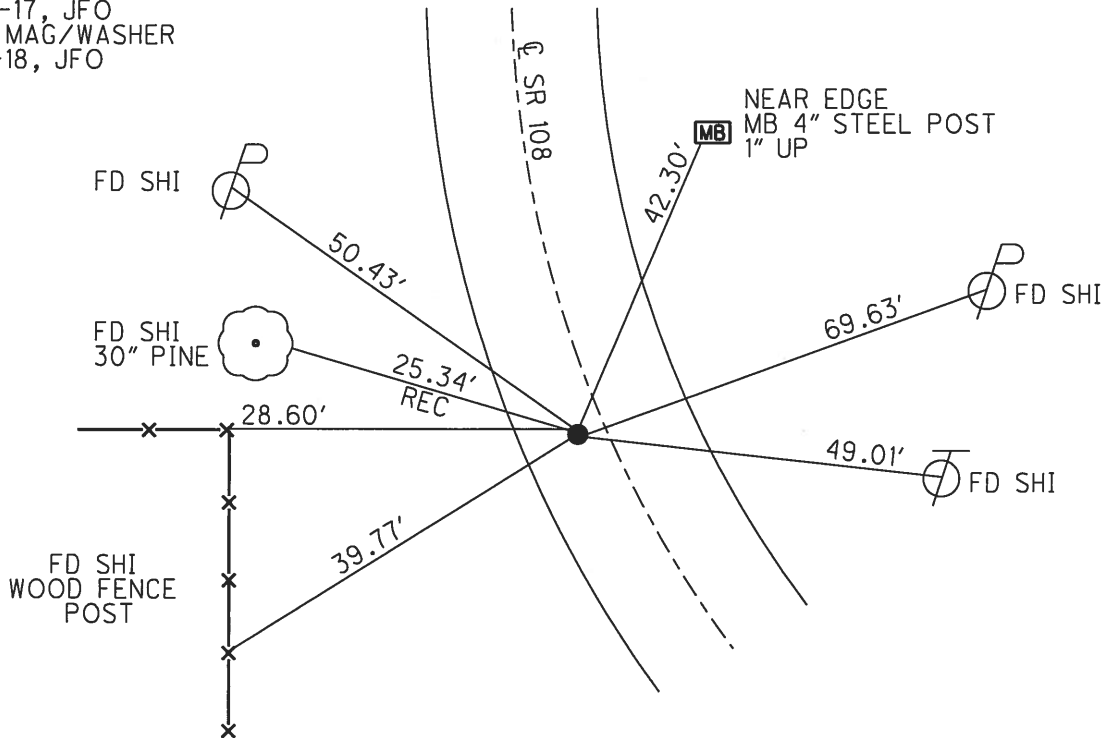
PERSONNEL _____ REFERENCE NO. 15 B SHEET 14 OF 26

NOTES RHOADES _____ DATE 5/1/18 ROUTE SR 108
 H.C. O'DONNELL _____ WEATHER SUNNY COUNTY FULTON
 R.C. SEAMAN _____ TEMP. 63° TOWNSHIP DOVER
 _____ SECTION 11
 _____ T 10 S R 2 E

TYPE MONUMENT MAG/WASHER
 ON SURFACE - ~~BELOW~~ ON _____
 LEFT - Q PAV'T - ~~RIGHT~~ 4.6'
7.4' TO LT EDGE PAVEMENT
 S.L.M. 516+82
 GPS NORTHING: 716476.867 GPS EASTING: 1517188.260



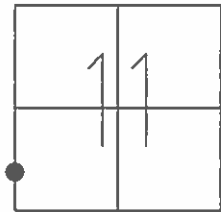
RECORD:
 FD SM. R.R. SPIKE
 5-12-92
 SET P.K./WASHER
 9-16-93
 SET MAG/WASHER
 10-31-07, DCH
 FD MAG/WASHER
 REFB15
 1-27-17, JFO
 SET MAG/WASHER
 8-7-18, JFO



O.D.O.T. DISTRICT 2 SURVEY OFFICE (USE ONLY)

PERSONNEL _____ REFERENCE NO. 15 B SHEET 12 OF 22
 NOTES CORDES DATE 6/19/07 ROUTE SR 108
 H.C. HOMAN WEATHER CLOUDY/RAIN COUNTY FULTON
 R.C. VIETH TEMP. 78° TOWNSHIP DOVER
 _____ SECTION 11
 _____ T 10 S R 2 E

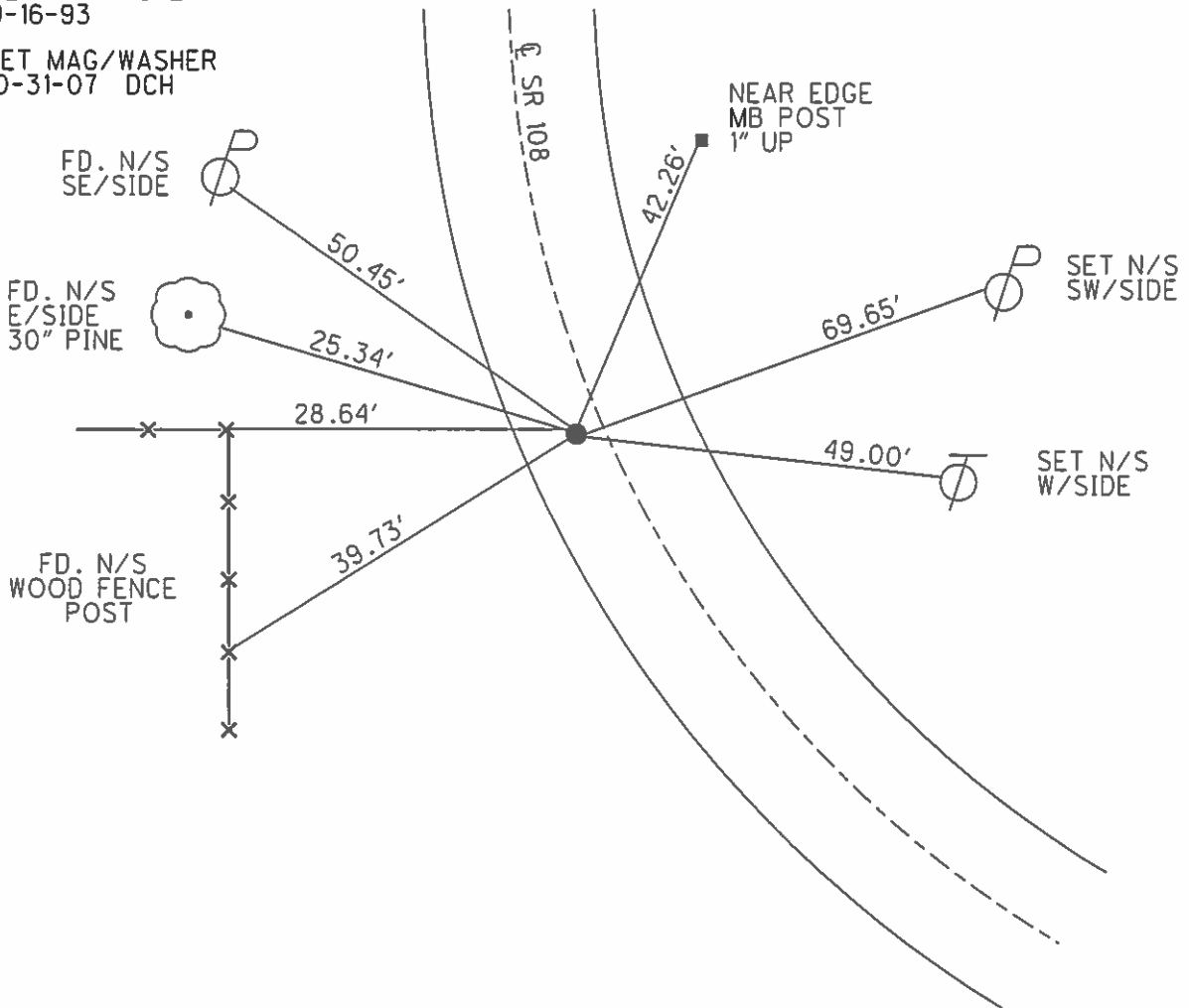
TYPE MONUMENT P.K./WASHER
 ON SURFACE - ~~BELOW~~ ON
 LEFT - ☉ PAV'T - ~~RIGHT~~ 4.6'
7.4' TOLT EDGE PAVEMENT
 S.L.M. 516+82
 GPS NORTHING: 716476.786 GPS EASTING: 1517188.144



FD. SM RR SPK
5-12-92

SET PK/WASHER
9-16-93

SET MAG/WASHER
10-31-07 DCH



O.D.O.T. DISTRICT 2 SURVEY OFFICE

PERSONNEL

REFERENCE NO. 15-B

SHEET 10 OF 11

NOTES LOHRKE

H.C. CURTIS

R.C. Romero

DATE 5-12-92

WEATHER Clear

TEMP. +85

ROUTE S.P. 108

COUNTY FULTON

TOWNSHIP DOVER

SECTION 11

T. 10 S. R 2 E

Reset

9-16-93

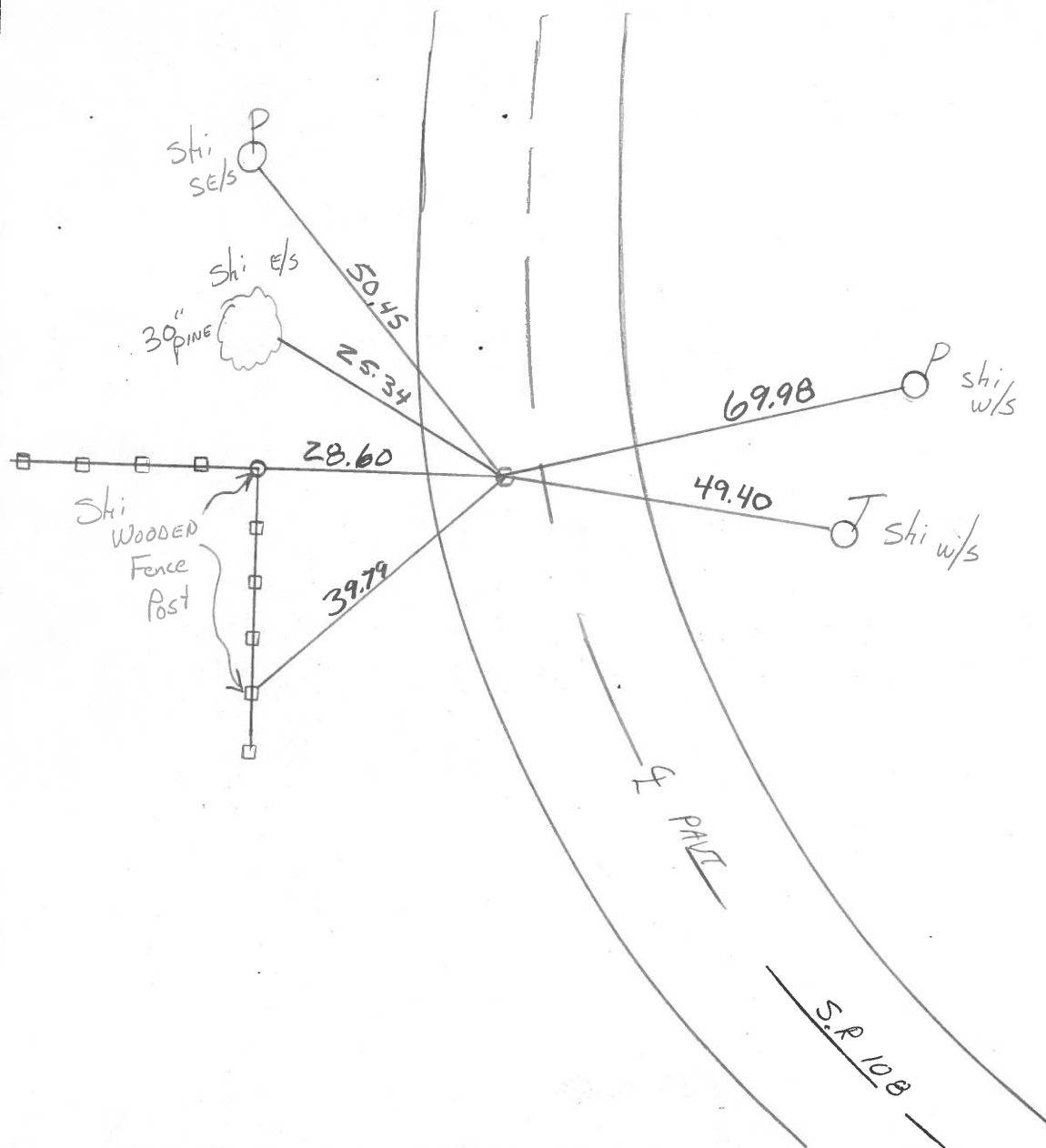
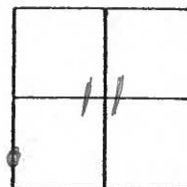
TYPE MONUMENT P.K. w/washer

ON SURFACE - ~~BELOW~~ Yes

LEFT - 0 PAV'T. - RIGHT 4.4

6.9 TO Lt EDGE PAVEMENT

S.L.M. 5/6+82



County FULTON S.R. 108

Date 4-9-82

Township DOVER

Weather cloudy

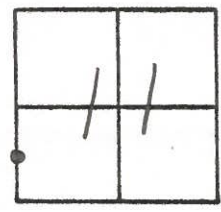
Section 11

Temp. +45°

T10 S R2E

Personnel Hoffman
F
Crew

15-B



Fd. P.K. @ SURFACE 4.3' W. of Φ PAUT Project sta \pm 516+77
 6.9 TO W. EP. SOURCE UNKNOWN
 14.9 TO E. EP.

SET P.K./WASHER
 S11-B2
 S.W.H.

