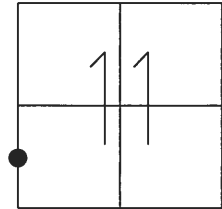


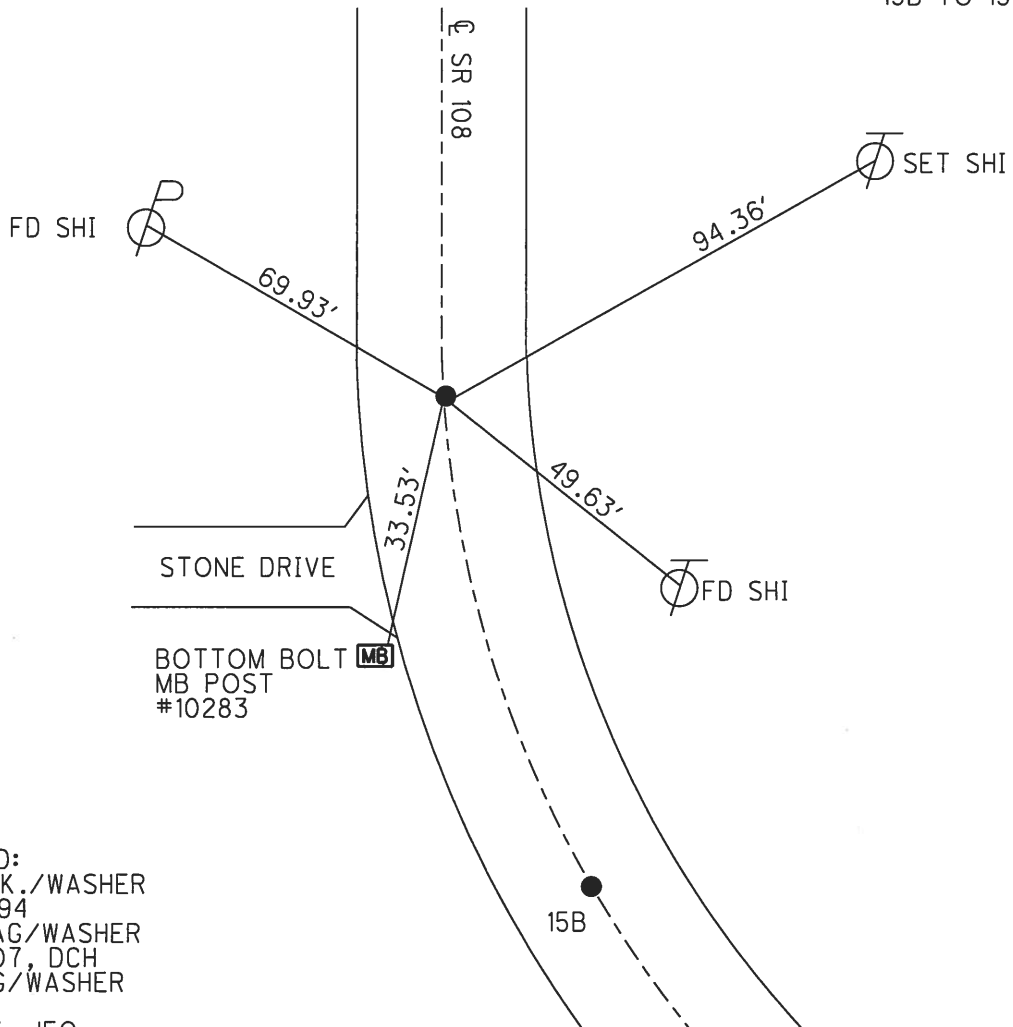
O.D.O.T. DISTRICT 2 SURVEY OFFICE (USE ONLY)

PERSONNEL	REFERENCE NO.	15 C	SHEET	15	OF	26
NOTES	RHOADES	DATE	5/1/18	ROUTE	SR 108	
H.C.	O'DONNELL	WEATHER	SUNNY	COUNTY	FULTON	
R.C.	SEAMAN	TEMP.	63°	TOWNSHIP	DOVER	
				SECTION	11	
				T	10	S
				R	2	E

TYPE MONUMENT MAG/WASHER
 ON SURFACE - ~~BELOW~~ ON
~~LEFT - C~~ PAV'T - ~~RIGHT~~ ON
11.9' TO RT EDGE PAVEMENT
 S.L.M. 518+23
 GPS NORTHING: 716623.519 GPS EASTING: 1517188.087



15B TO 15C = 146.69'

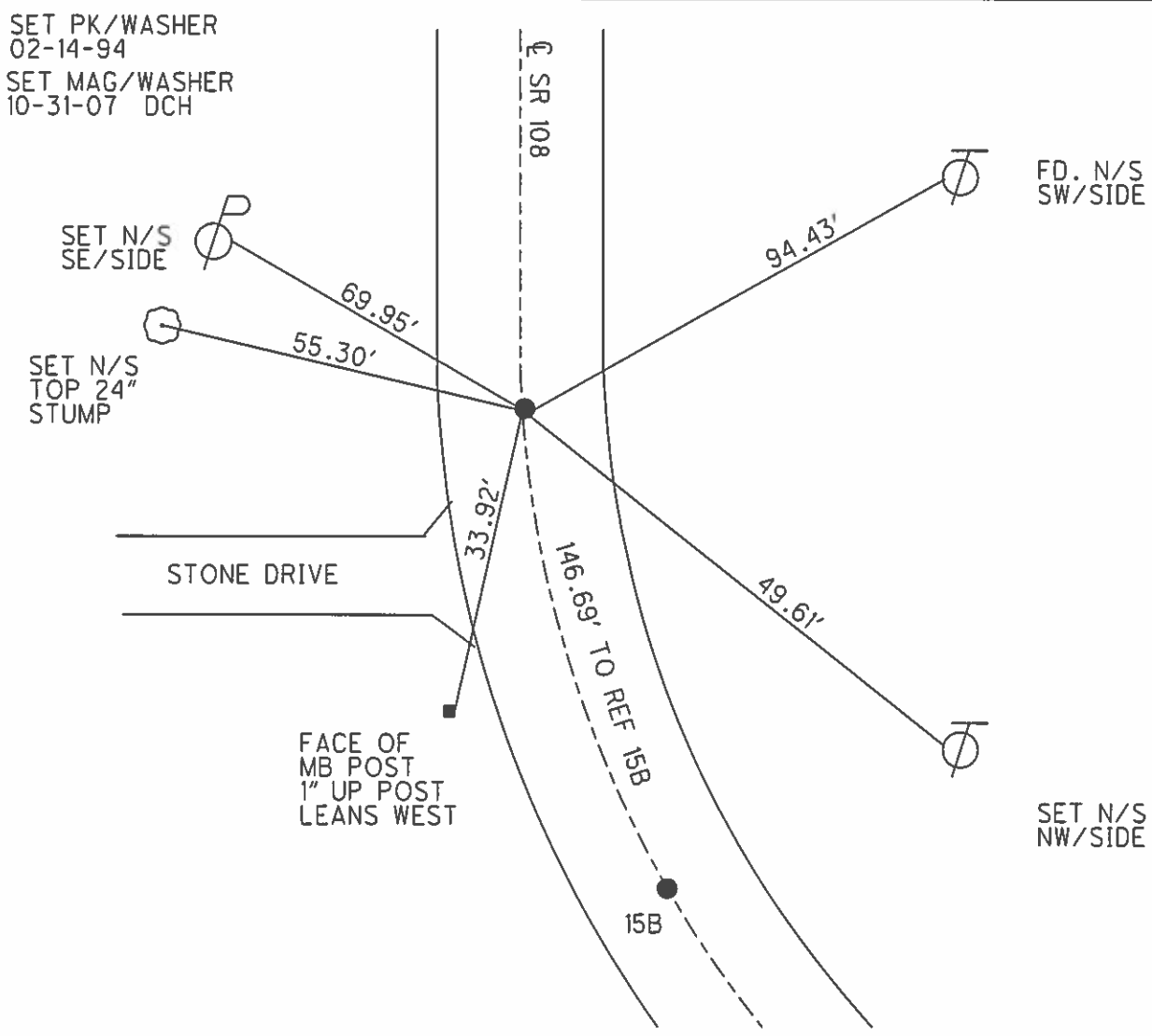
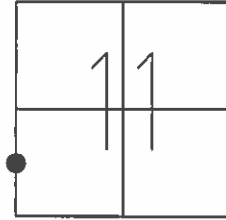


RECORD:
 SET P.K./WASHER
 02-14-94
 SET MAG/WASHER
 10-31-07, DCH
 FD MAG/WASHER
 REFC15
 1-27-17, JFO
 SET MAG/WASHER
 8-7-18, JFO

O.D.O.T. DISTRICT 2 SURVEY OFFICE (USE ONLY)

PERSONNEL _____ REFERENCE NO. 15 C SHEET 13 OF 22
 NOTES CORDES DATE 6/19/07 ROUTE SR 108
 H.C. HOMAN WEATHER CLOUDY/RAIN COUNTY FULTON
 R.C. VIETH TEMP. 78° TOWNSHIP DOVER
 _____ SECTION 11
 _____ T 10 S R 2 E

TYPE MONUMENT P.K./WASHER
 ON SURFACE - ~~BELOW~~ ON
~~LEFT~~ - Q PAV'T - ~~RIGHT~~ ON
11.9' TO RT EDGE PAVEMENT
 S.L.M. 518+23
 GPS NORTHING: 716623.544 GPS EASTING: 1517188.019



O.D.O.T. DISTRICT 2 SURVEY OFFICE

PERSONNEL _____

REFERENCE NO. 15-C

SHEET _____ OF _____

NOTES LOEHRKE

H.C. CANTERBURY

DATE FEB 14, 1994

ROUTE S.R.108

R.C. VOGEL

WEATHER Pt Cloudy

COUNTY FULTON

HERMILLER

TEMP. +24

TOWNSHIP DOVER

SECTION 11

T 10 S R 2 E

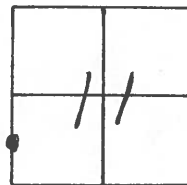
TYPE MONUMENT P.K. & WASHER

ON SURFACE - BELOW Yes

LEFT - & PAV'T. - RIGHT Yes

11.9' TO R+ EDGE PAVEMENT

S.L.M. 15 + 785.381



Set P.T.

