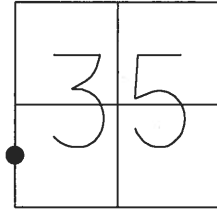


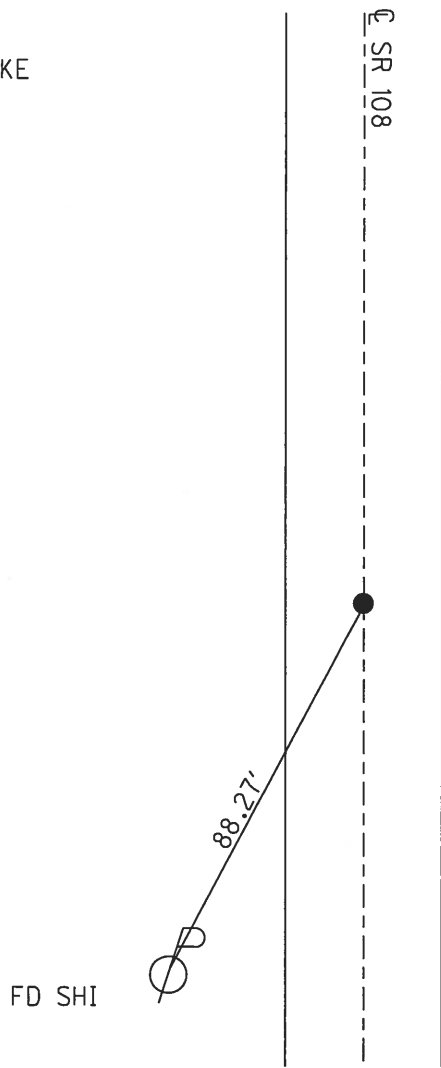
O.D.O.T. DISTRICT 2 SURVEY OFFICE (USE ONLY)

PERSONNEL \_\_\_\_\_ REFERENCE NO. 18 B SHEET 21 OF 26  
 NOTES RHOADES DATE 5-2-18 ROUTE SR 108  
 H.C. O'DONNELL WEATHER \_\_\_\_\_ WIND \_\_\_\_\_ COUNTY FULTON  
 R.C. SEAMAN TEMP. 71° TOWNSHIP CHESTERFIELD  
 \_\_\_\_\_ SECTION 35  
 \_\_\_\_\_ T 9 S R 2 E

TYPE MONUMENT \_\_\_\_\_ SM.R.R.SPIKE  
~~ON SURFACE~~ - BELOW 4"  
~~LEFT - C~~ PAV'T - ~~RIGHT~~ ON  
11.5' TO RT EDGE PAVEMENT  
 S.L.M. 597+17  
 GPS NORTHING: 724497.590 GPS EASTING: 1517152.543



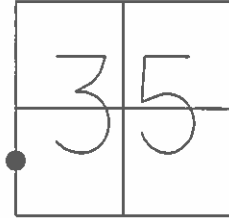
RECORD:  
 FD R.R. SPIKE  
 10-21-86  
 SET SM. R.R. SPIKE  
 5-22-87  
 SET MAG/WASHER  
 08-09-07, DCH  
 FD R.R. SPIKE  
 4" DOWN REFB18  
 5-2-18, JFO  
 SET MAG/WASHER  
 8-7-18, JFO



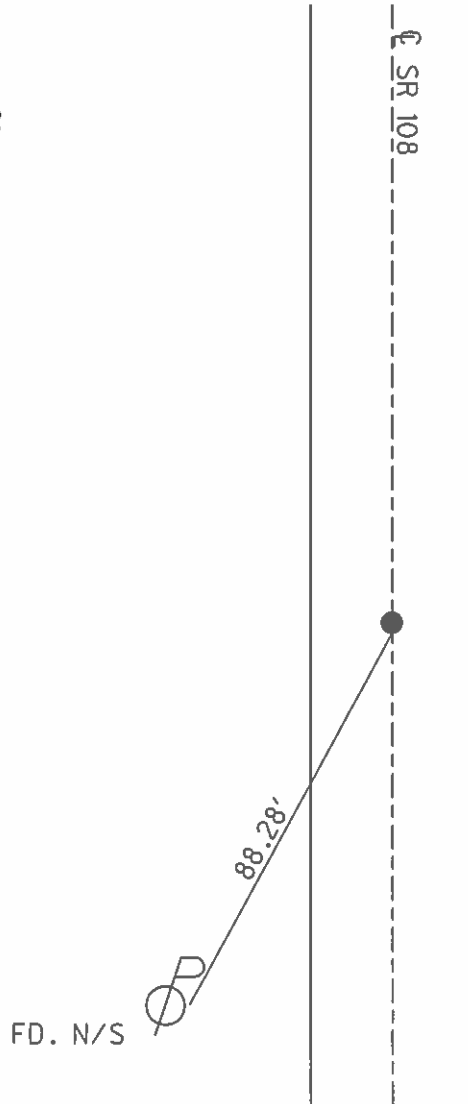
O.D.O.T. DISTRICT 2 SURVEY OFFICE (USE ONLY)

PERSONNEL \_\_\_\_\_ REFERENCE NO. 18 B SHEET 19 OF 22  
 NOTES CORDES DATE 6/20/07 ROUTE SR 108  
 H.C. HOMAN WEATHER SUNNY COUNTY FULTON  
 R.C. CORDES TEMP. 76° TOWNSHIP CHESTERFIELD  
 \_\_\_\_\_ SECTION 35  
 \_\_\_\_\_ T 9 S R 2 E

TYPE MONUMENT SM.R.R.SPIKE  
 ON SURFACE - ~~BELOW~~ ON  
~~LEFT~~ - ℄ PAV'T - ~~RIGHT~~ ON  
11.5' TO RT EDGE PAVEMENT  
 S.L.M. 597+17  
 GPS NORTHING: 724497.606 GPS EASTING: 1517152.496



FD. RR SPK  
 10-21-86  
 SET SM RR SPK  
 5-22-87  
 SET MAG/WASHER  
 08-09-07 DCH



# O.D.O.T. DISTRICT 2 SURVEY OFFICE

PERSONNEL

REFERENCE NO. 18-B

SHEET 6 OF       

NOTES 1. Stone

H.C. D. Curtis

R.C. J. Hauscholder

DATE 21 Oct. 86

WEATHER Cloudy

TEMP. 79°

ROUTE SR#108

COUNTY Fulton

TOWNSHIP Chesterfield

SECTION 35

T        R       

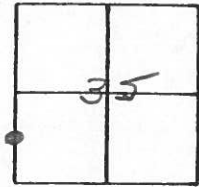
TYPE MONUMENT RR Spk.

ON SURFACE - BELOW 1 1/2" deep

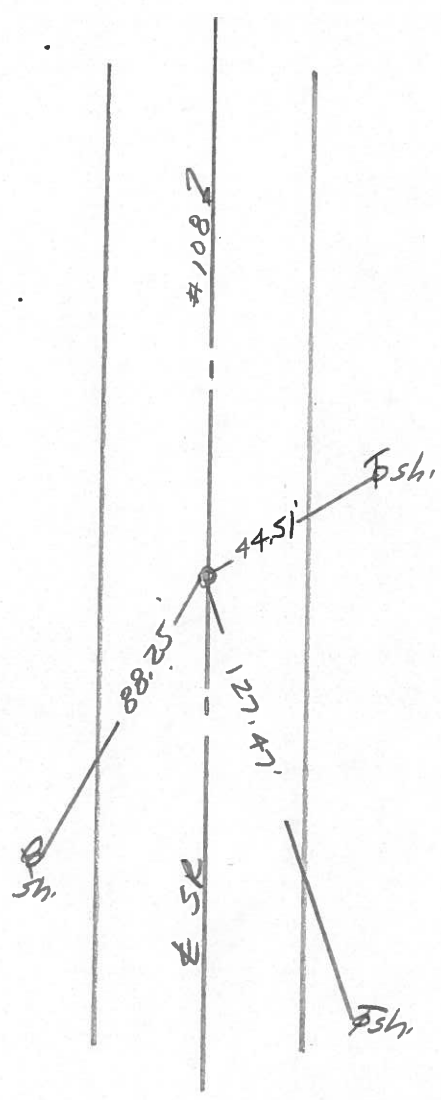
LEFT -  $\odot$  PAV'T. - RIGHT       

       TO        EDGE PAVEMENT

S.L.M. 596+86



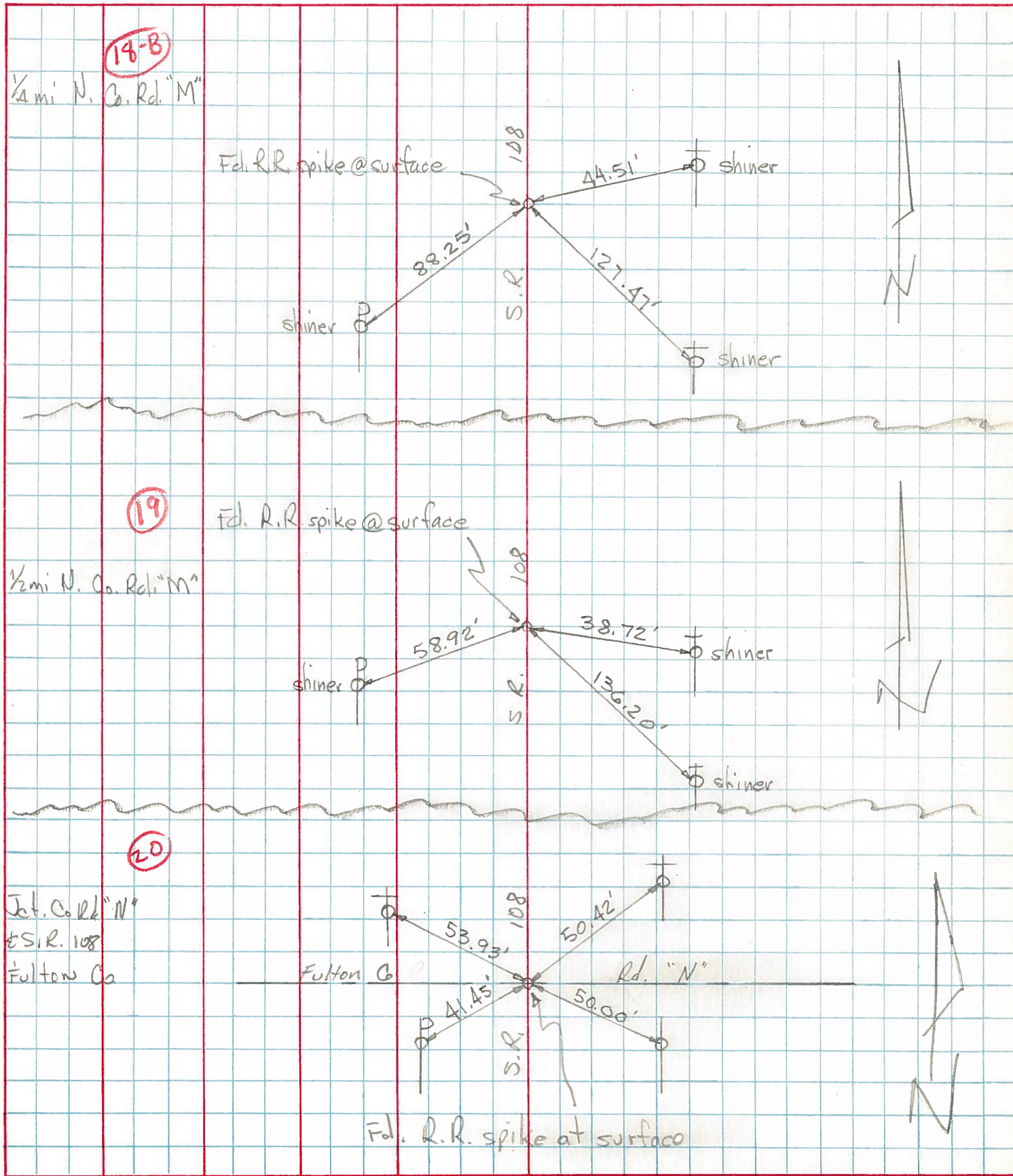
Set Small R.R. Spk. To Surface  
5-22-87



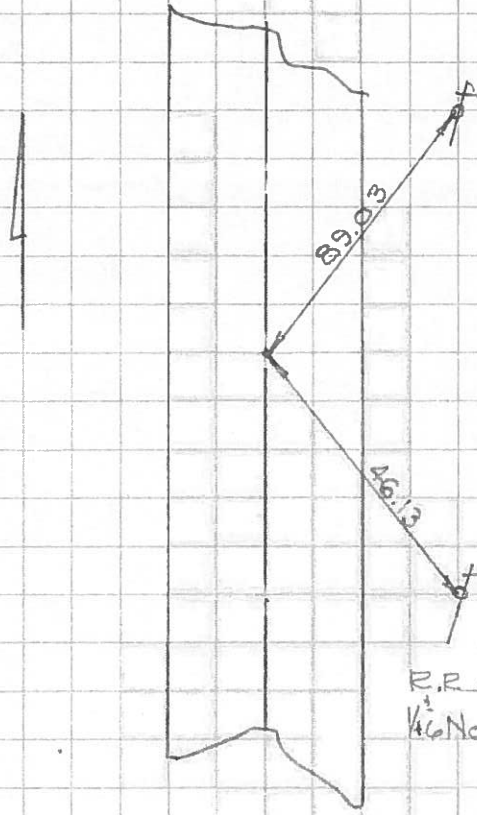
PERSONNEL	TITLE	PERSONNEL	TITLE
Tomsic			
Neuser			
Granata			
Vanya			

COUNTY Fulton DATE April 25, 1973  
 S. R. 108 WEATHER \_\_\_\_\_  
 SEC. \_\_\_\_\_ TEMP. \_\_\_\_\_

DESCRIPTION \_\_\_\_\_ LEFT \_\_\_\_\_ CENTER LINE \_\_\_\_\_ RIGHT \_\_\_\_\_ JOB NO. \_\_\_\_\_

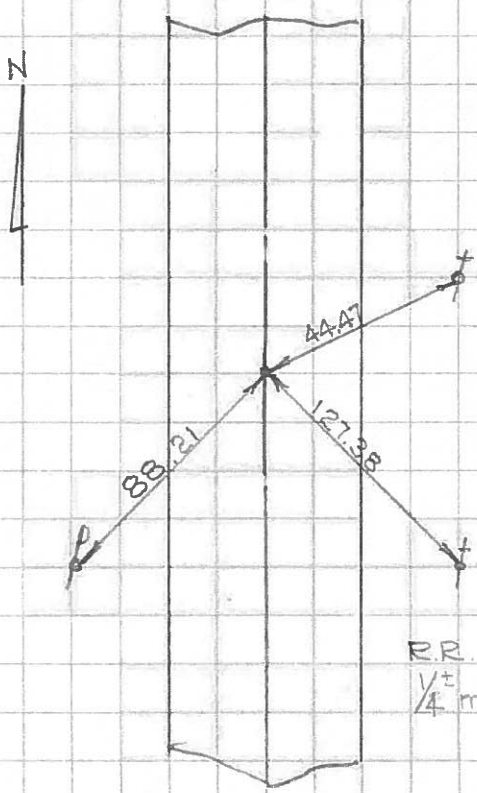


18A



R.R. spike flush with pavement  
1/4 mi North County Rd "M"

18B



R.R. spike flush w' h pavem  
1/4 mi North Count Rd "M"

