

O.D.O.T. DISTRICT 2 SURVEY OFFICE (USE ONLY)

PERSONNEL

REFERENCE NO. 22

SHEET 2 OF 6

NOTES LEU

DATE 4/15/16

ROUTE SR 108

H.C. HOMAN

WEATHER SUNNY

COUNTY FULTON

R.C. LEU

TEMP. 62°

TOWNSHIP CHESTERFIELD

DWG BY NIESE

PID PAVETRAIN

SECTION 20

T 9 S R 2 E

TYPE MONUMENT MAG/WASHER

ON SURFACE - ~~BELOW~~ ON

OFFSET  $\varnothing$  PAVEMENT 1.0' ~~LT~~ : RT

11.4' TO RT EDGE PAVEMENT

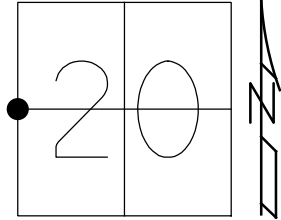
STATION: 875+08

HORZ.DATUM: NAD83(2011)

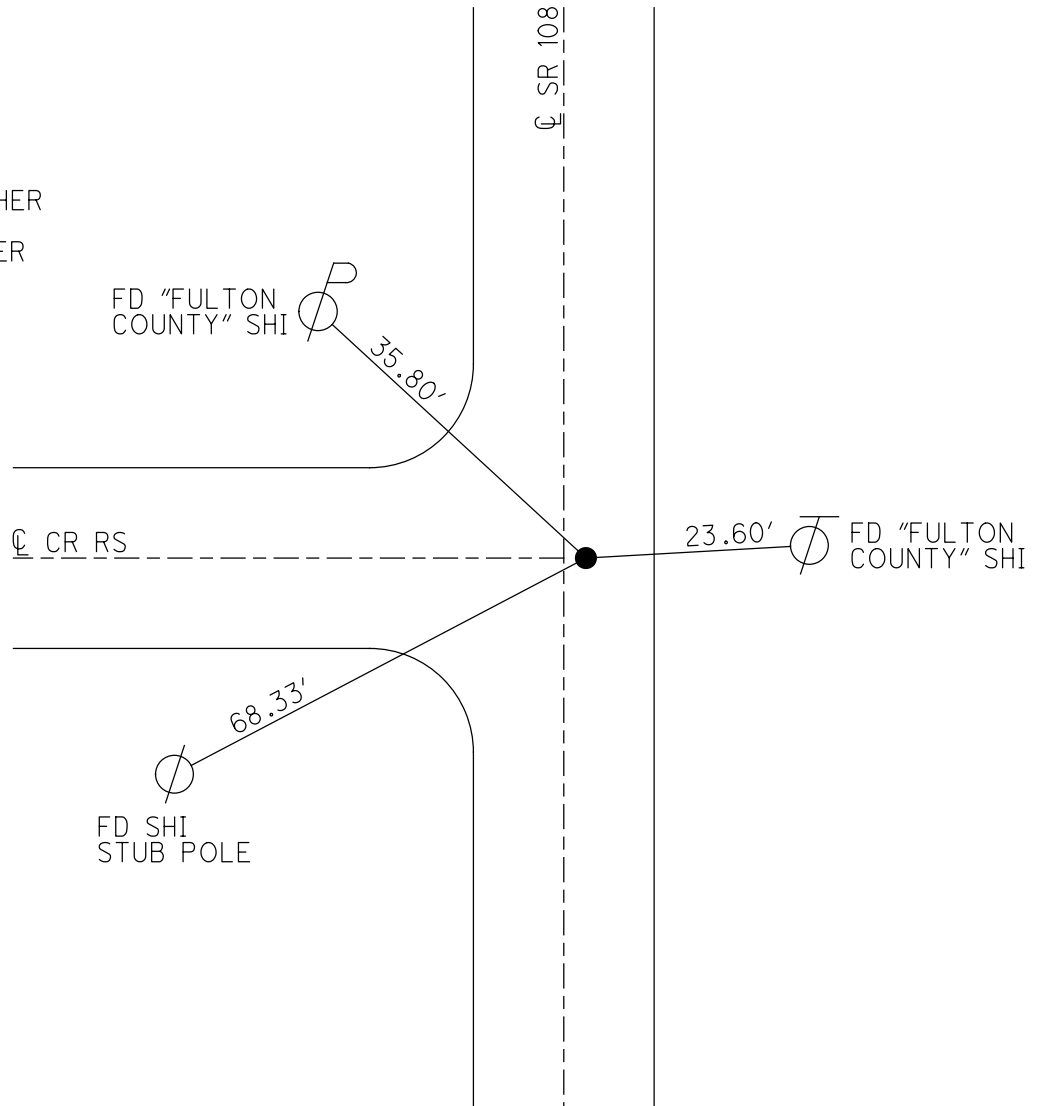
GEOID: NAVD88 2012A

GRID: NORTHING: 736328.021

EASTING: 1501203.943



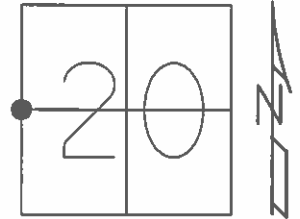
RECORD:  
 SET P.K. NAIL  
 6/17/88, DC  
 DNF P.K. NAIL  
 AT 4" DOWN  
 5/6/04, DCH  
 SET MAG/WASHER  
 4/15/16, DCH  
 FD MAG/WASHER  
 REF22  
 6/16/21  
 9/17/21, TDN



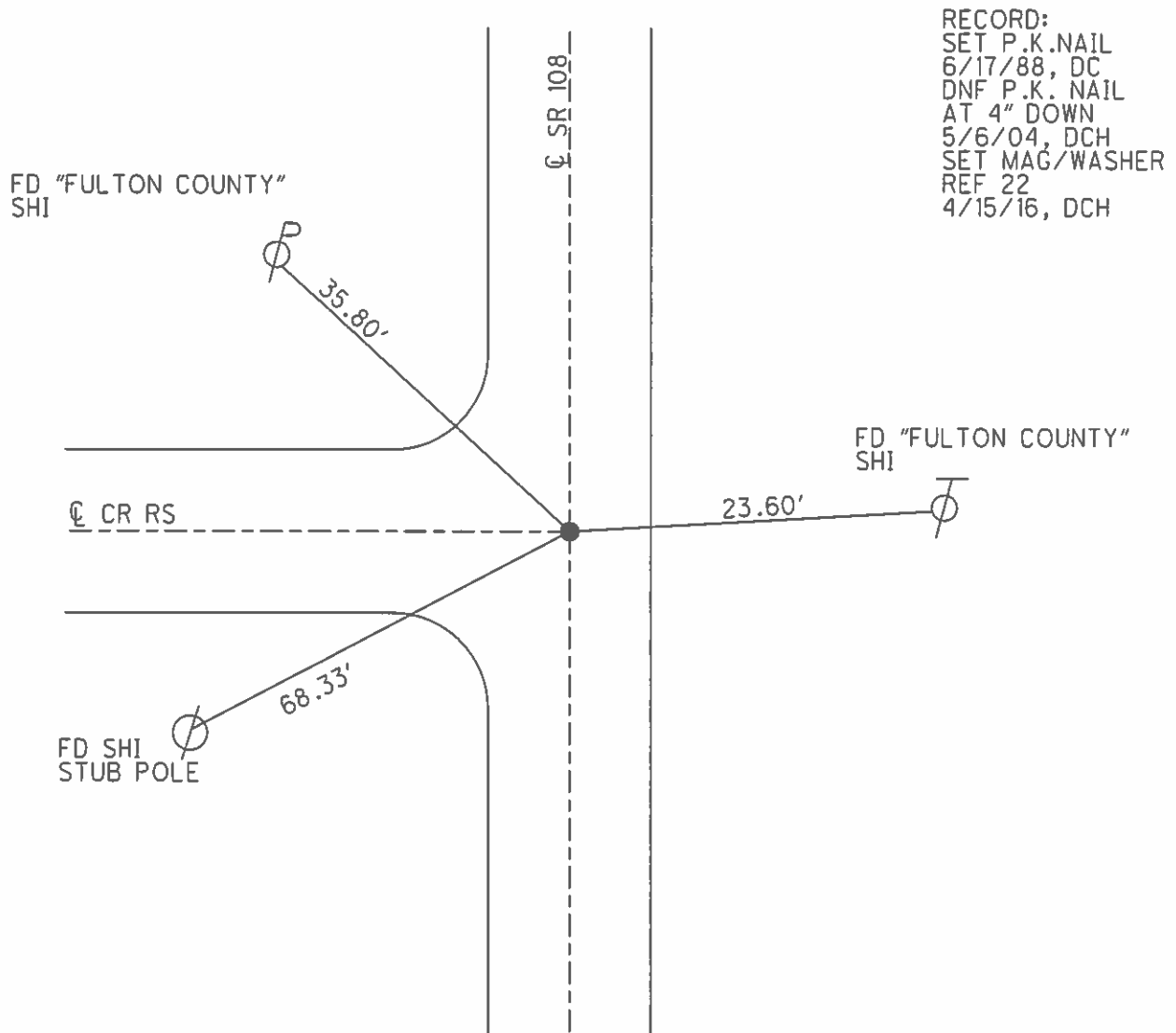
**O.D.O.T. DISTRICT 2 SURVEY OFFICE (USE ONLY)**

PERSONNEL \_\_\_\_\_ REFERENCE NO. 22 SHEET 3 OF 7  
 NOTES LEU DATE 04-15-2016 ROUTE SR 108  
 H.C. HOMAN WEATHER SUNNY COUNTY FULTON  
 R.C. LEU TEMP. 62°F TOWNSHIP CHESTERFIELD  
 SECTION 20  
T 9 S R 2 E

TYPE MONUMENT MAG NAIL  
 ON SURFACE - ~~BELOW~~ ON \_\_\_\_\_  
~~LEFT~~ - Q PAV'T - RIGHT 1'  
11.4' TO RT EDGE PAVEMENT  
 S.L.M. 875+08



GRID: NORTHING: 736328.041 EASTING: 1501203.947



O.D.O.T. DISTRICT 2 SURVEY OFFICE

PERSONNEL \_\_\_\_\_

REFERENCE NO. 22

SHEET 3 OF 7

NOTES D. CURTIS

DATE 5-31-88

ROUTE SR 108

H.C. J. HOUSEHOLDER

WEATHER WARM

COUNTY FULTON

R.C. \_\_\_\_\_

TEMP. +90°

TOWNSHIP CHESTERFIELD

SECTION 20

T 9 S R 2 E

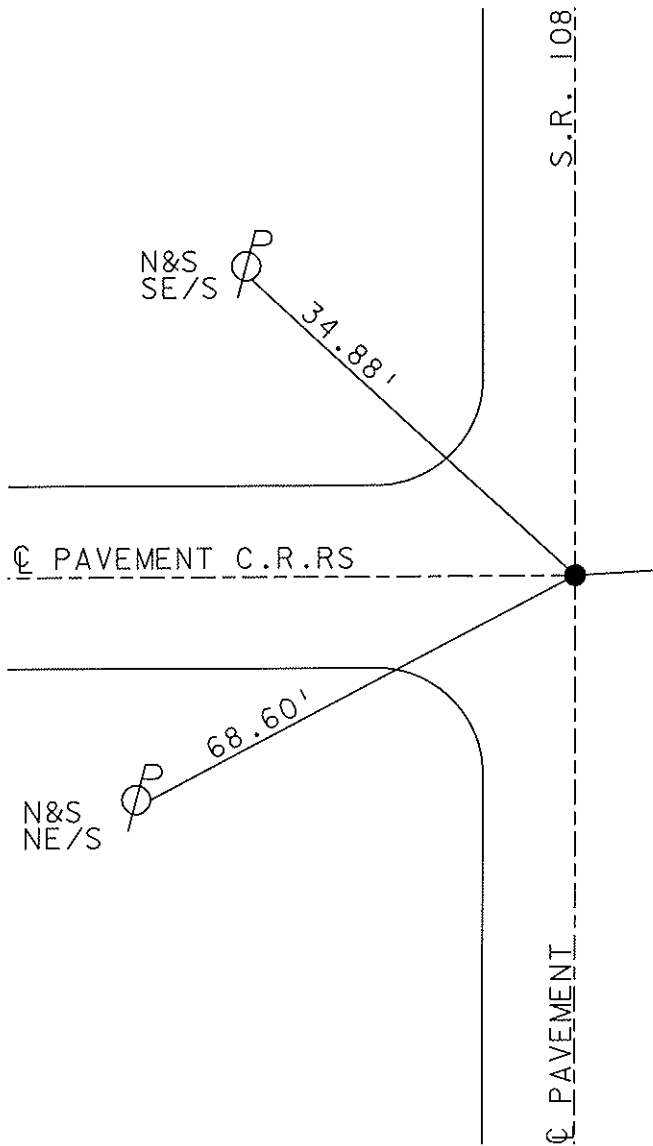
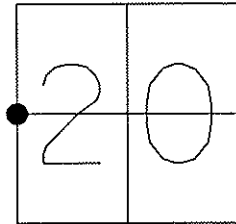
TYPE MONUMENT \_\_\_\_\_ PK NAIL (set 6-17-88)

ON SURFACE - ~~BELOW~~ \_\_\_\_\_ ON \_\_\_\_\_

~~LEFT~~ - ☉ PAV'T - ~~RIGHT~~ \_\_\_\_\_ ON \_\_\_\_\_

11.4' TO RT EDGE PAVEMENT

S.L.M. \_\_\_\_\_ 875+08 \_\_\_\_\_



DID NOT FIND PK NAIL  
DUG DOWN 4" AND FOUND NOTHING  
NEED TO RESEARCH MORE LATER,  
AND SEARCH FOR CONTROL CORNER.  
05-06-04 D.C.H.

ALL MEASUREMENTS ARE  
1988 RECORD DATA

# O.D.O.T. DISTRICT 2 SURVEY OFFICE

PERSONNEL \_\_\_\_\_

REFERENCE NO. 22

SHEET 2 OF 6

NOTES D. CURTIS

H.C. J. HOUSEHOLDER

DATE 5-31-88

ROUTE J.R. #108

R.C. \_\_\_\_\_

WEATHER WARM

COUNTY FULTON

\_\_\_\_\_

TEMP. 90°±

TOWNSHIP CHESTERFIELD

\_\_\_\_\_

SECTION 20

T \_\_\_\_\_ R \_\_\_\_\_

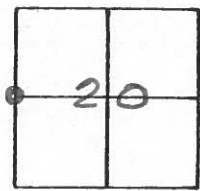
TYPE MONUMENT P.K. NAIL

ON SURFACE - ~~BELOW~~ ON SURFACE

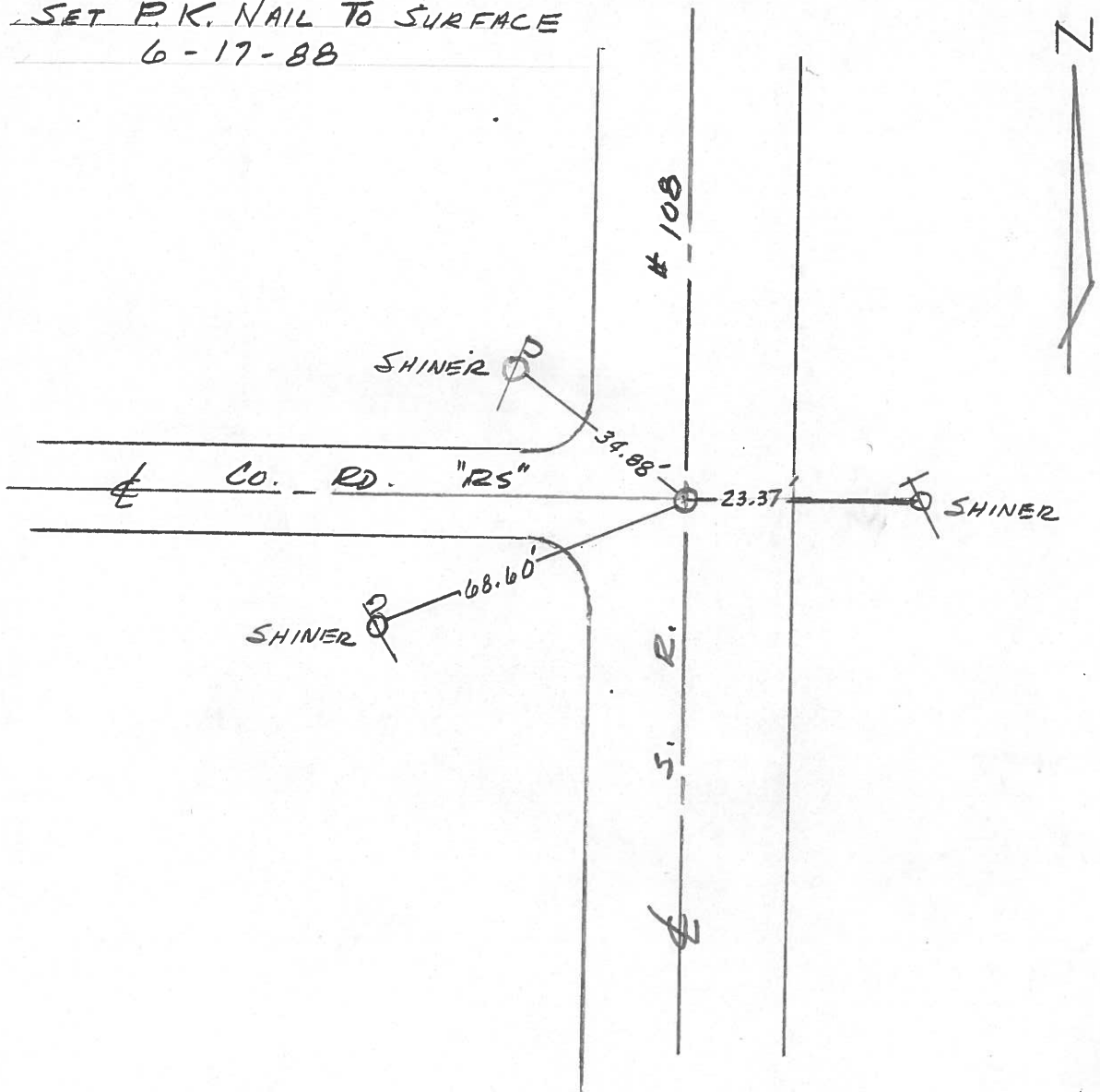
LEFT - & PAV'T. - RIGHT & PAV'T

11.4' TO E. EDGE PAVEMENT

S.L.M. 875+08



SET P.K. NAIL TO SURFACE  
6-17-88



O.D.O.T. DISTRICT 2 SURVEY OFFICE

SHEET 2 OF

County Fulton S.R. 108

Township Chesterfield

Section 20

T N, R E

Personnel I. Stone

P. Newson

D. Curtis

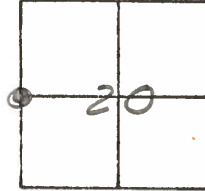
\_\_\_\_\_

\_\_\_\_\_

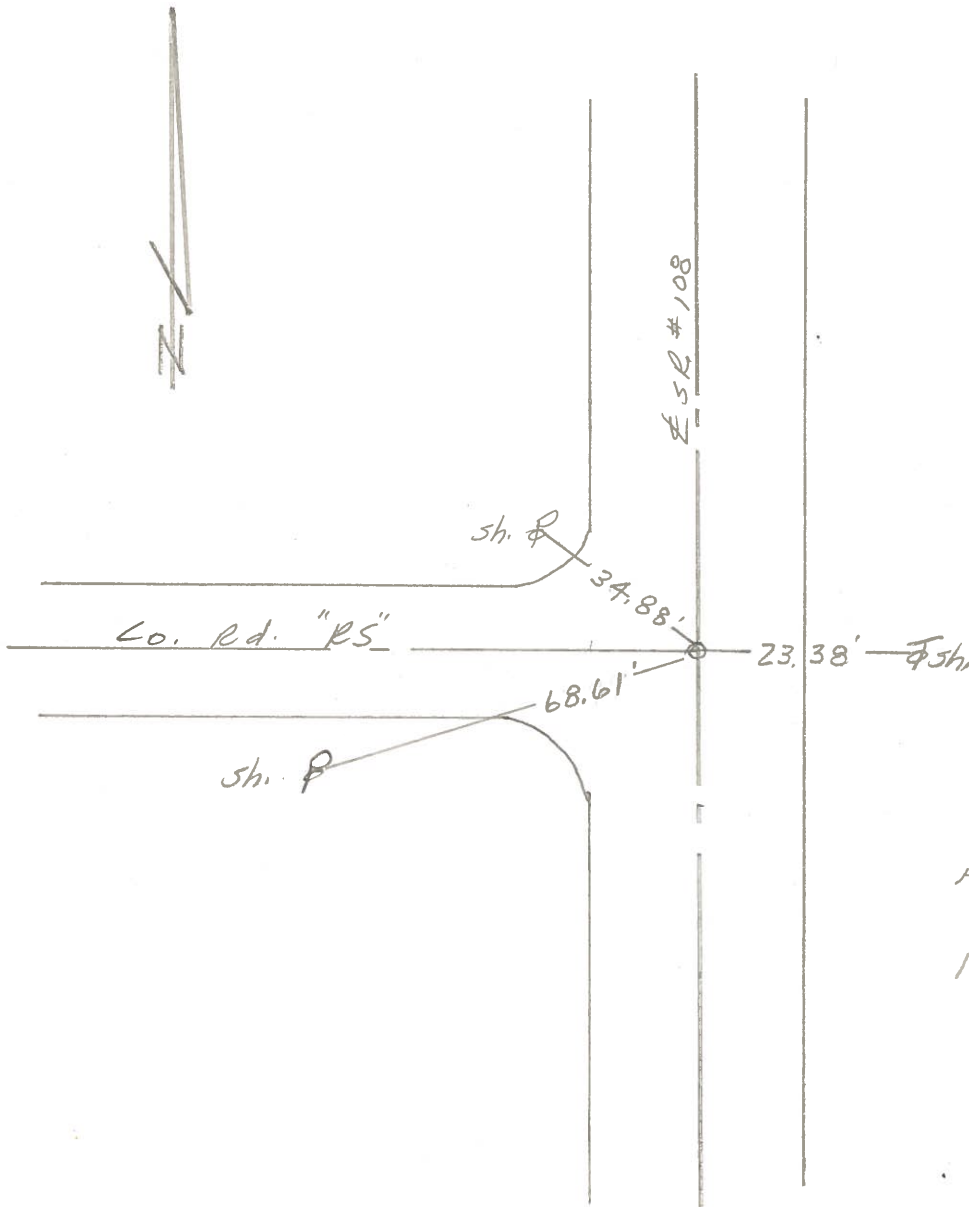
Date 11 May 81 <sup>OK 6-1-81 S.W.H.</sup>

Weather Cloudy

Temp. 75°



REF. No. 22



RE-SET P.K. NAIL

FD. PK Nail To Surface

9.4' to E. E. Pt.

11.4

County Fulton S.R. 108

Date 11 May 81

Township Chesterfield

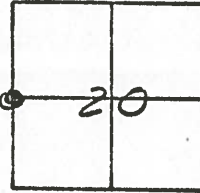
Weather Cloudy

Section 20

Temp: 75°

T\_N, R\_E

Personnel L. Stone



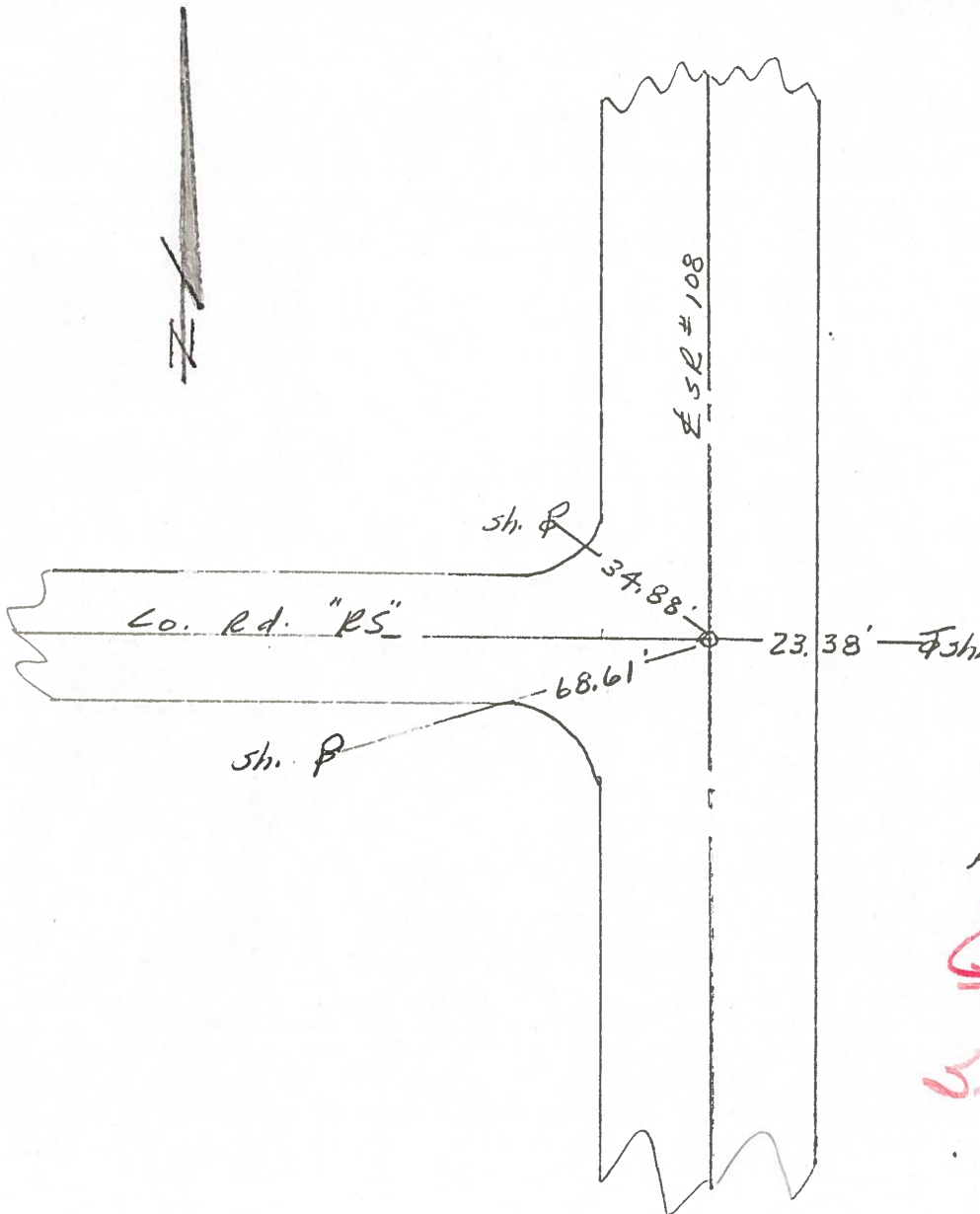
P. Newser

D. Curtis

\_\_\_\_\_

\_\_\_\_\_

REF. No. 22



Est. PK Nail To Surface  
9.4' to E. & Pt.

11.4  
Set P.K.

PERSONNEL	TITLE	PERSONNEL	TITLE
Stone			
E			
Crew			

COUNTY Fulton DATE 25 Aug 77  
 S. R. #108 WEATHER Fair  
 SEC. US #20 - N. to Mich. Line TEMP. 70°

DESCRIPTION \_\_\_\_\_ References \_\_\_\_\_  
 LEFT \_\_\_\_\_ CENTER LINE \_\_\_\_\_ RIGHT \_\_\_\_\_ JOB NO. \_\_\_\_\_

