

O.D.O.T. DISTRICT 2 SURVEY OFFICE (USE ONLY)

PERSONNEL \_\_\_\_\_

REFERENCE NO. 25

SHEET 5 OF 6

NOTES LEU

DATE 4/15/16

ROUTE SR 108

H.C. HOMAN

WEATHER SUNNY

COUNTY FULTON

R.C. LEU

TEMP. 65°

TOWNSHIP CHESTERFIELD

DWG BY NIESE

PID PAVETRAIN

SECTION 17

T 9 S R 2 E

TYPE MONUMENT MAG/WASHER

ON SURFACE - ~~BELOW~~ ON

OFFSET  $\varnothing$  PAVEMENT ON LT : RT

- TO - EDGE PAVEMENT

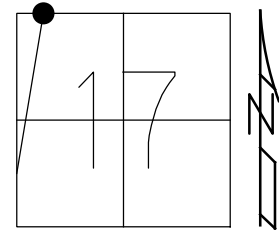
STATION: 954+09

HORZ.DATUM: NAD83(2011)

GEOID: NAVD88 2012A

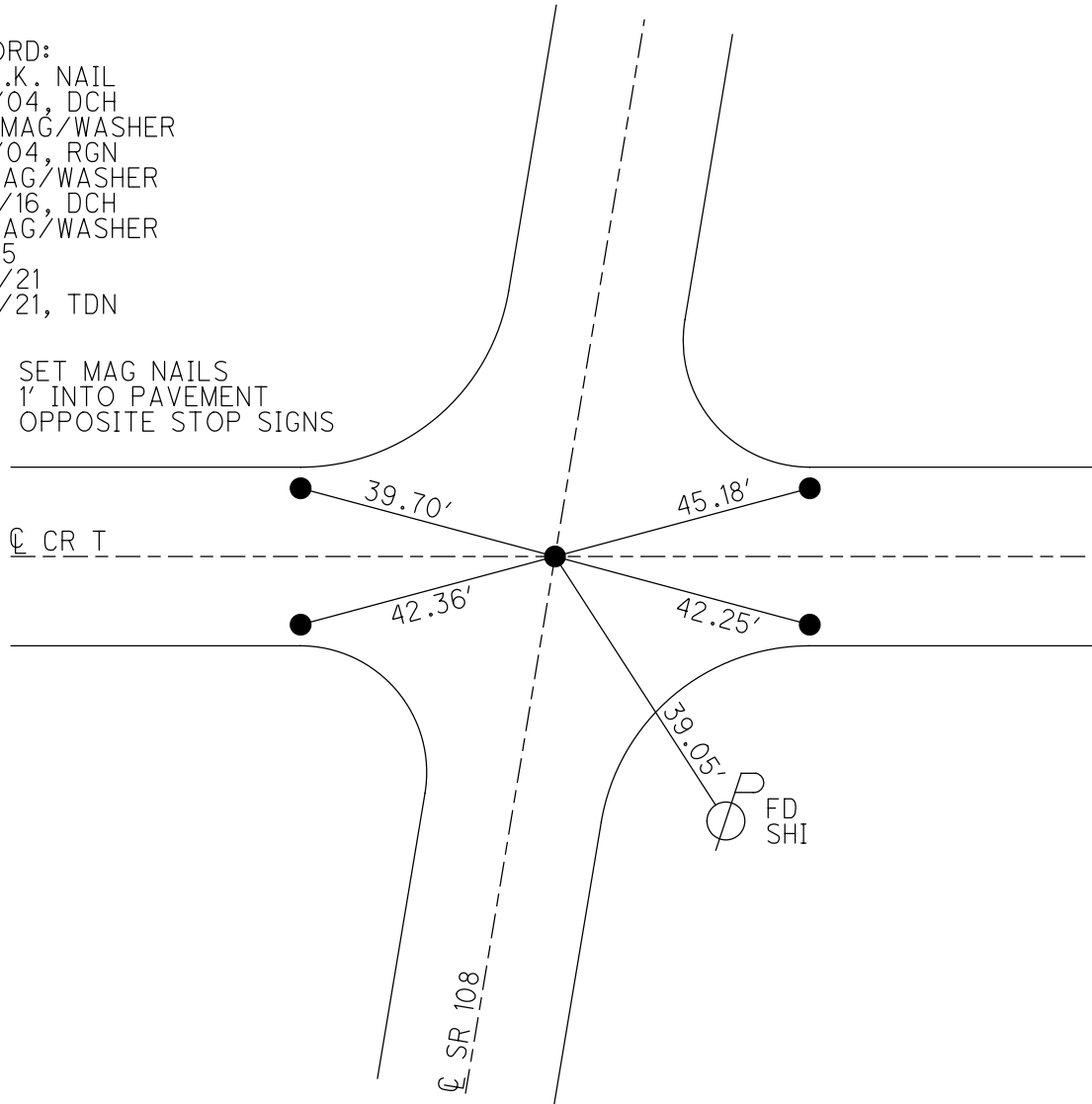
GRID: NORTHING: 744247.145

EASTING: 1501846.002



RECORD:  
 FD P.K. NAIL  
 5/6/04, DCH  
 SET MAG/WASHER  
 6/2/04, RGN  
 FD MAG/WASHER  
 4/15/16, DCH  
 FD MAG/WASHER  
 REF25  
 6/16/21  
 9/17/21, TDN

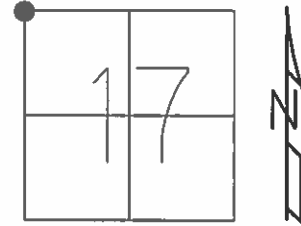
SET MAG NAILS  
 1' INTO PAVEMENT  
 OPPOSITE STOP SIGNS



O.D.O.T. DISTRICT 2 SURVEY OFFICE (USE ONLY)

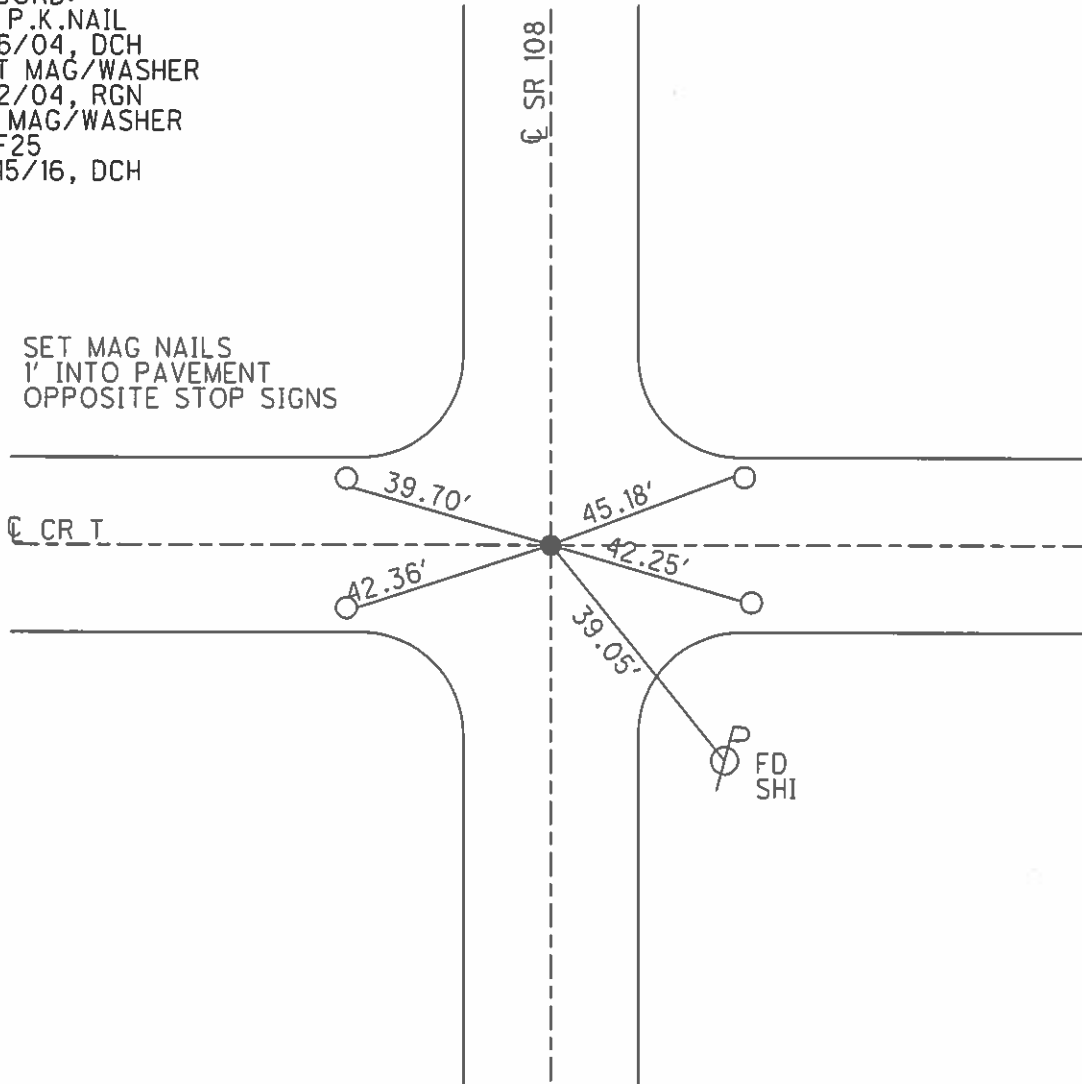
PERSONNEL \_\_\_\_\_ REFERENCE NO. 25 SHEET 6 OF 7  
 NOTES LEU DATE 04-15-2016 ROUTE SR 108  
 H.C. HOMAN WEATHER SUNNY COUNTY FULTON  
 R.C. LEU TEMP. 65° TOWNSHIP CHESTERFIELD  
 \_\_\_\_\_ SECTION 17  
 \_\_\_\_\_ T 9 S R 2 E

TYPE MONUMENT MAG/WASHER  
~~ON SURFACE~~ - BELOW ON  
 LEFT - ☉ PAV'T - RIGHT ON  
- TO - EDGE PAVEMENT  
 S.L.M. 954+09



GRID: NORTHING: 744247.168 EASTING: 1501846.009

RECORD:  
 FD P.K.NAIL  
 5/6/04, DCH  
 SET MAG/WASHER  
 6/2/04, RGN  
 FD MAG/WASHER  
 REF25  
 4/15/16, DCH



O.D.O.T. DISTRICT 2 SURVEY OFFICE

PERSONNEL

REFERENCE NO. 25

SHEET 6 OF 7

NOTES HUSS

DATE 5-06-04

ROUTE US 108

H.C. HOMAN

WEATHER SUNNY

COUNTY FULTON

R.C. HOOKER

TEMP. 70°

TOWNSHIP CHESTERFIELD

SECTION 7-8-17-18

T 9 S R 2 E

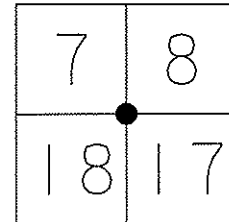
TYPE MONUMENT PK NAIL

~~ON SURFACE~~ - BELOW 4"

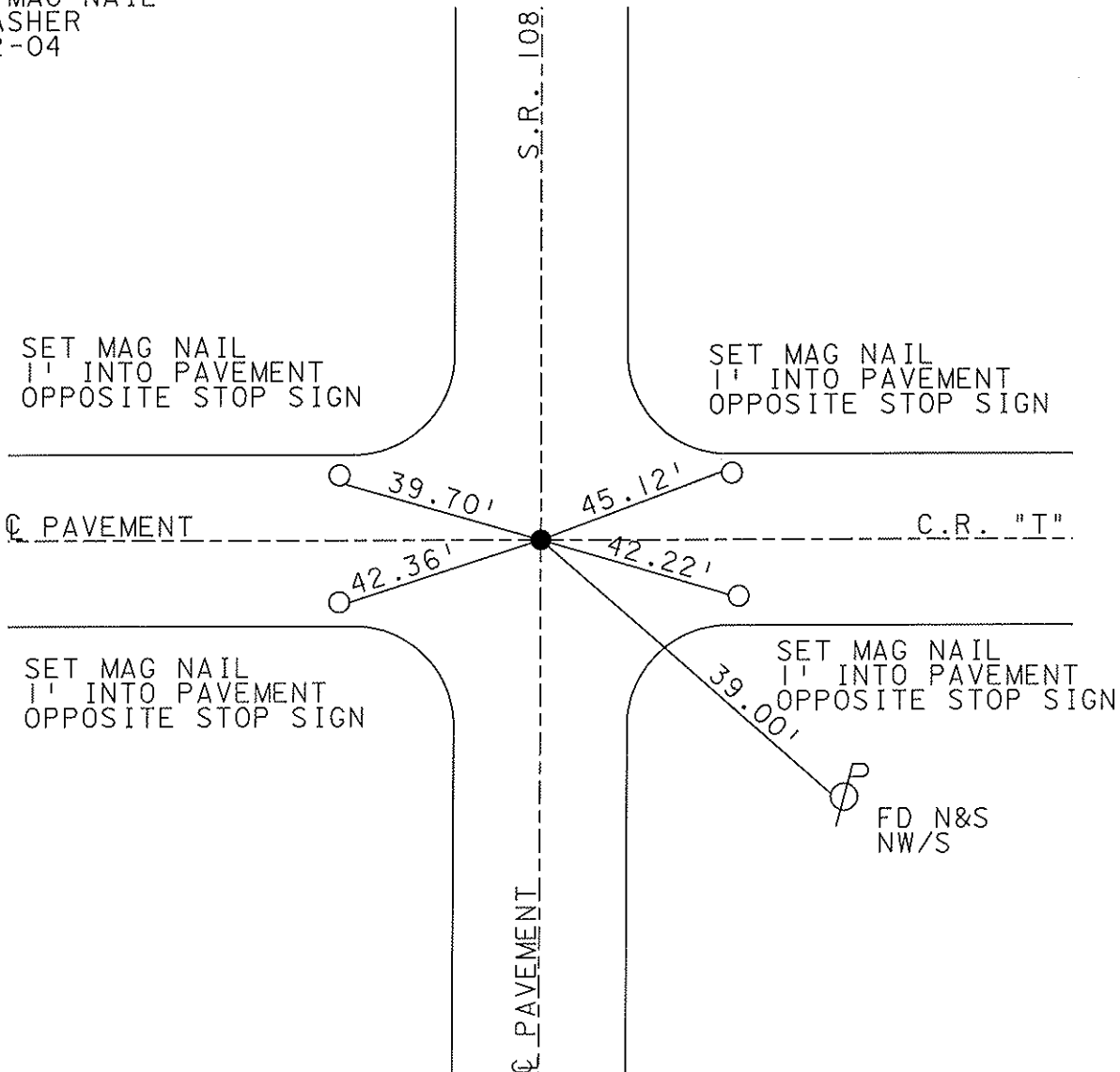
~~LEFT - C PAV'T - RIGHT~~ 0.8' LT

TO EDGE PAVEMENT

S.L.M. 654+79 954+09



SET MAG NAIL  
& WASHER  
6-02-04  
RGN



SET MAG NAIL  
1' INTO PAVEMENT  
OPPOSITE STOP SIGN

SET MAG NAIL  
1' INTO PAVEMENT  
OPPOSITE STOP SIGN

SET MAG NAIL  
1' INTO PAVEMENT  
OPPOSITE STOP SIGN

SET MAG NAIL  
1' INTO PAVEMENT  
OPPOSITE STOP SIGN

FD N&S  
NW/S

# O.D.O.T. DISTRICT 2 SURVEY OFFICE

PERSONNEL \_\_\_\_\_

REFERENCE NO. 25

SHEET 5 OF 6

NOTES D. CURTIS

H.C. J. HOUSEHOLDER DATE 5-31-88

ROUTE S.R. #108

R.C. \_\_\_\_\_ WEATHER WARM

COUNTY FULTON

TEMP. 90° E

TOWNSHIP CHESTERFIELD

SECTION 7-8-17-18

T \_\_\_\_\_ R \_\_\_\_\_

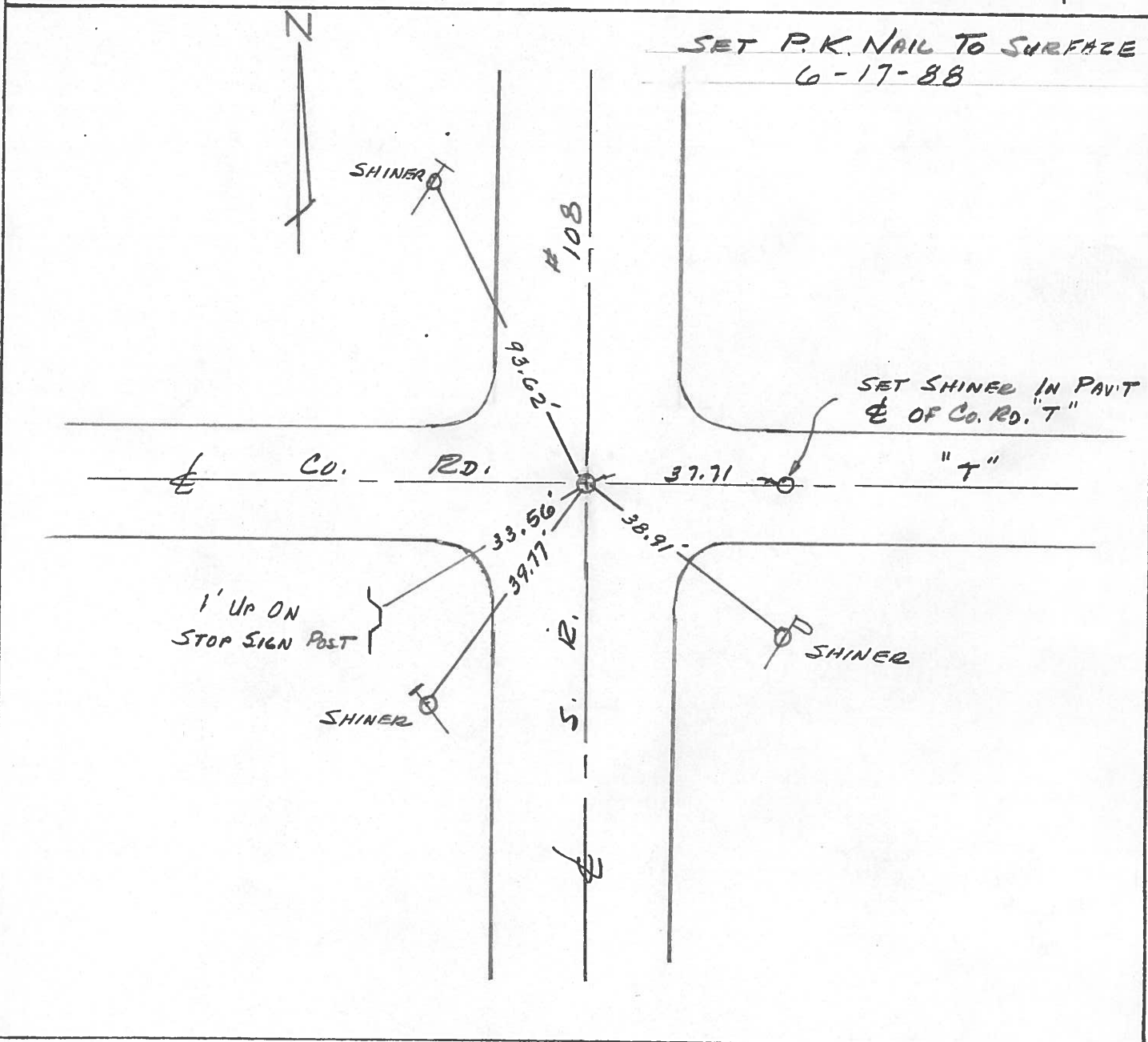
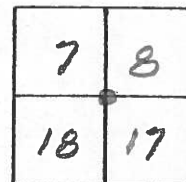
TYPE MONUMENT P.K. NAIL

ON SURFACE - ~~BELOW~~ ON SURFACE

LEFT- & PAV'T. - RIGHT E PAV'T

TO \_\_\_\_\_ EDGE PAVEMENT

S.L.M. 954 + 79



O.D.O.T. DISTRICT 2 SURVEY OFFICE

SHEET 5 OF

County Fulton S.R. 108

Township Chesterfield

Section 7-8-17-18

T.N, R.E

Personnel I. Stone

P. Neusser

D. Curtis

Date OK-6-1-81 S.W.H.  
11 May 81

Weather Cloudy

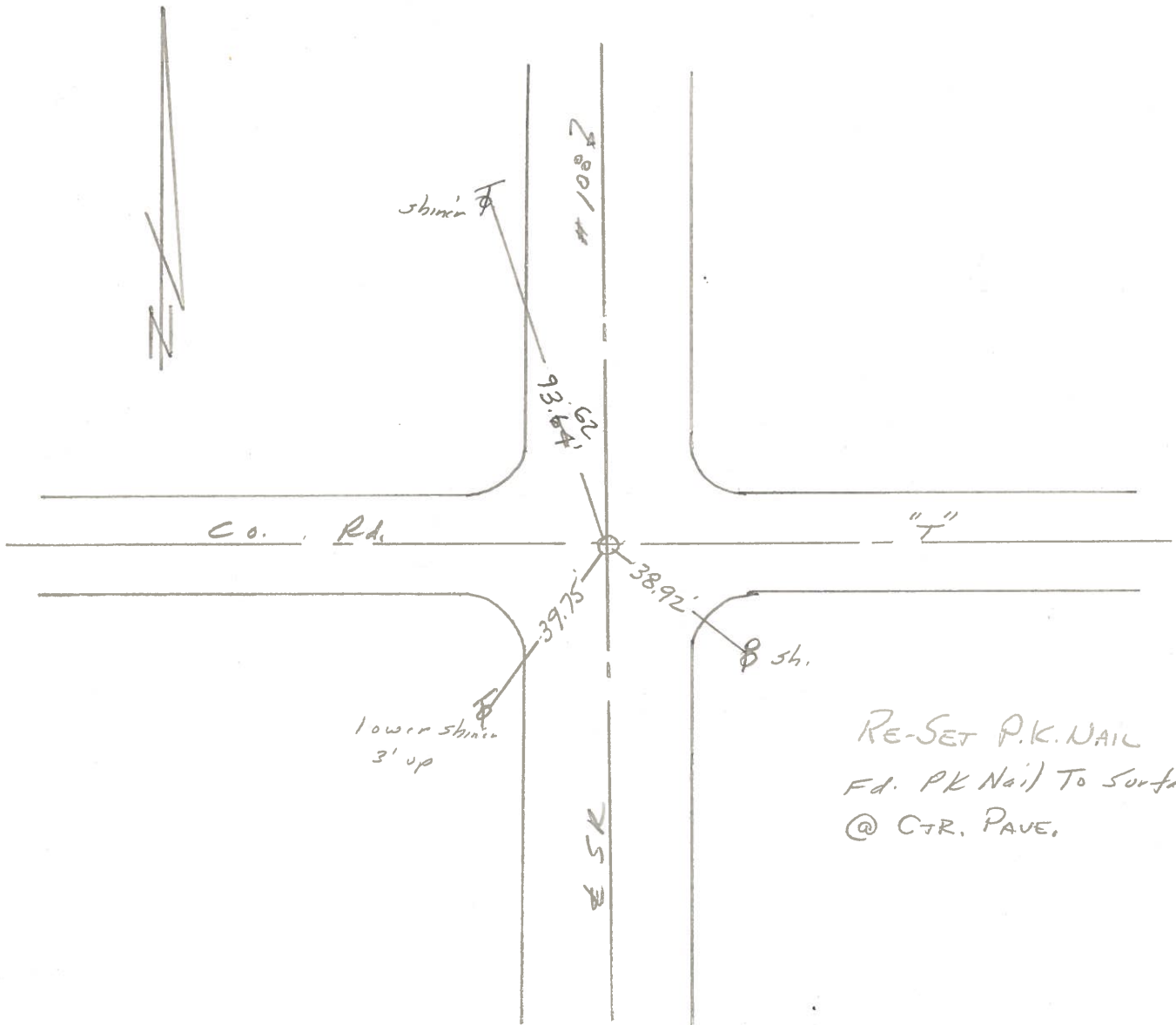
Temp. 45°

7	8
18	17



954+65±

REF. No. 25



RE-SET P.K. NAIL  
 Fd. PK Nail To Surface  
 @ CTR. PAVE.

County Fulton S.R. 108

Township Chesterfield

Section 7-8-17-18

T\_N, R\_E

Personnel I. Stone

P. Neuser

D. Curtis

Date 11 May 81

Weather Cloudy

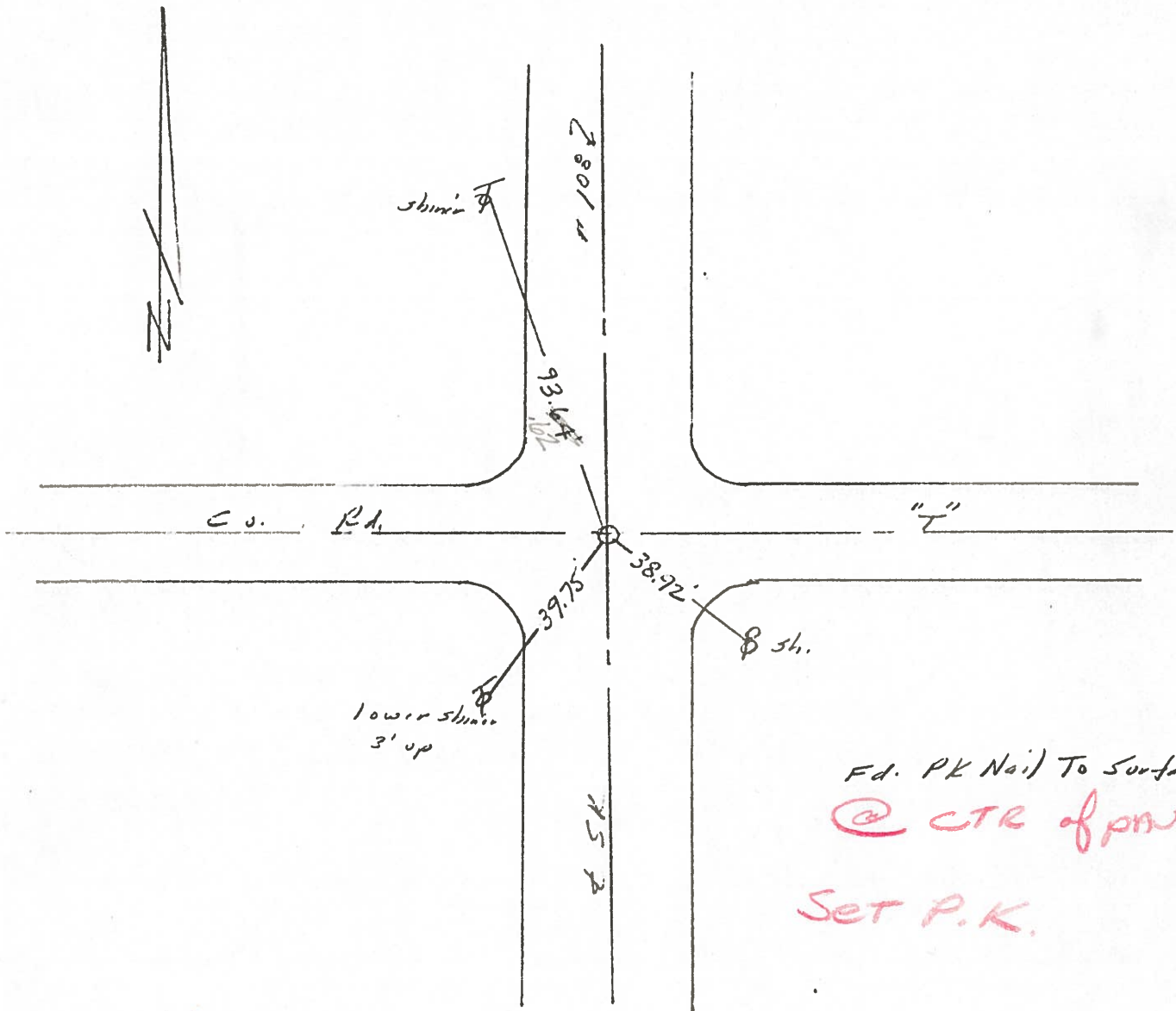
Temp. 45°

7	8
18	17



954+65±

REF. No. 25



Fd. PK Nail To Surface  
 @ CTR of PWT  
 SET P.K.

PERSONNEL TITLE PERSONNEL TITLE

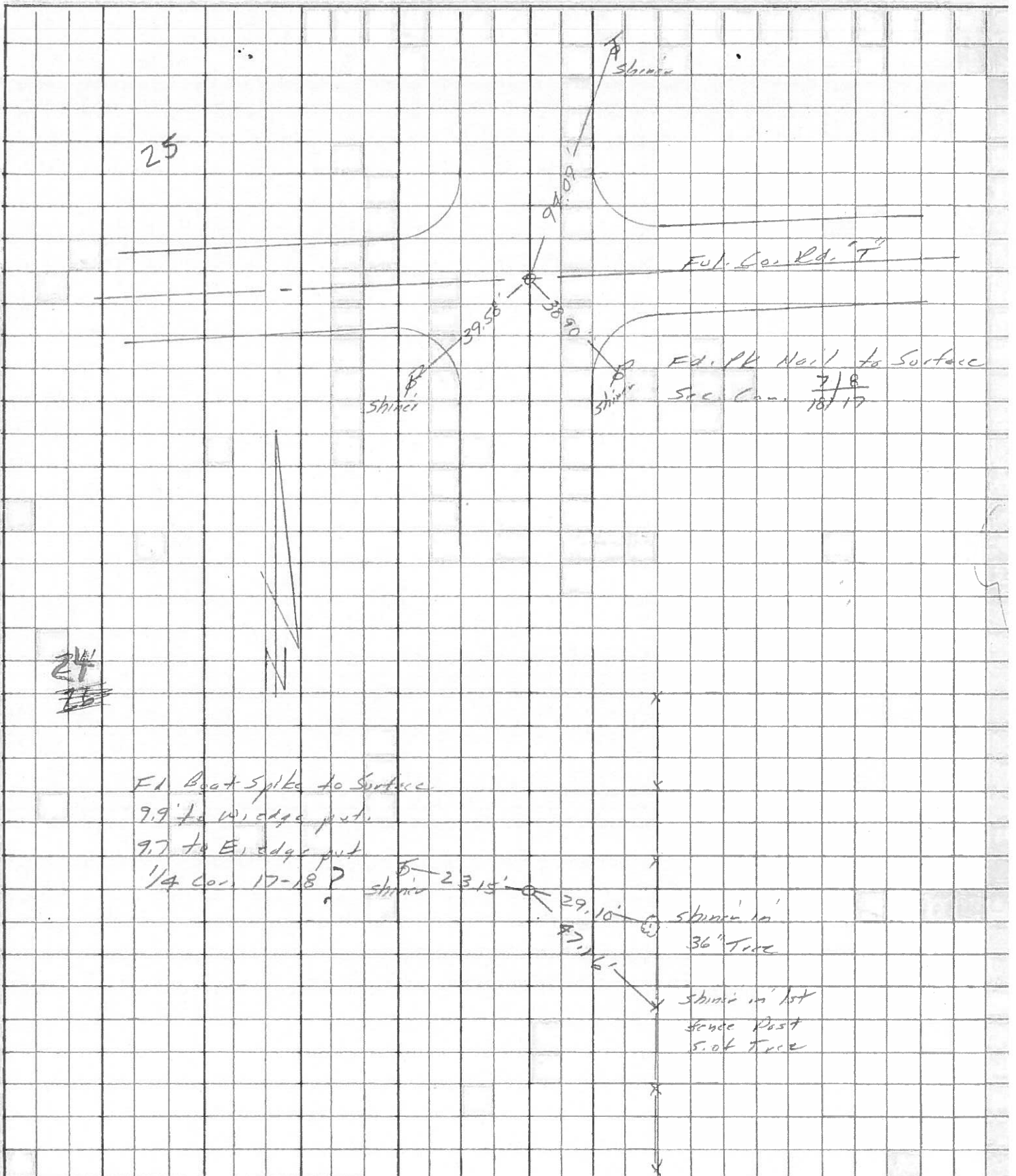
Stone \_\_\_\_\_  
§ \_\_\_\_\_  
Cross \_\_\_\_\_

COUNTY Fulton DATE 25 Aug 1977

S. R. #108 WEATHER Fair

SEC. US #20 N. to Mark Line TEMP. 70°

DESCRIPTION LEFT Reference CENTER LINE RIGHT JOB NO.



PERSONNEL	TITLE	PERSONNEL	TITLE	COUNTY	DATE	WEATHER	TEMP.
Tomsic				Fulton	April 25, 1973		
Neuser				S. R. 108			
Granata							
Van yn				SEC.			

DESCRIPTION \_\_\_\_\_ LEFT \_\_\_\_\_ CENTER LINE \_\_\_\_\_ RIGHT \_\_\_\_\_ JOB NO. \_\_\_\_\_

