

FED. AID DIST. NO.	STATE	FED. AID PROJECT	FISCAL YEAR
10	OHIO		1929



STATE OF OHIO  
DEPARTMENT OF HIGHWAYS

SH.(ICH) 299 SEC. B-1  
FULTON COUNTY

LIBERTY ADRIAN ROAD

SH.(ICH) 299 SEC. B-1 PET. NO. 6661

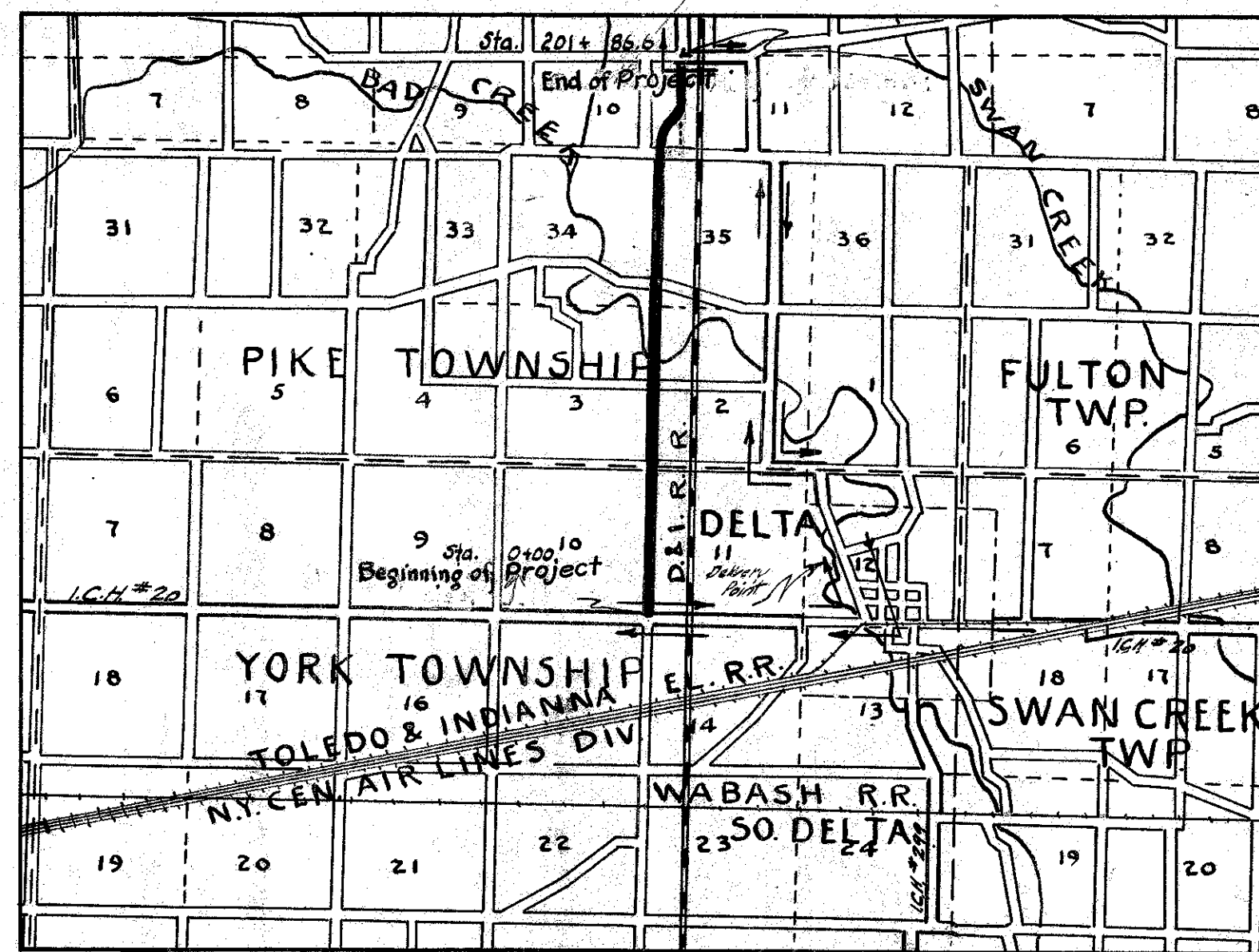
FULTON COUNTY

YORK & PIKE TOWNSHIP

JAN 1929

The Standard Specifications of the State of Ohio, Department of Highways, in force on date of contract will govern this improvement.

I hereby approve these plans and declare that the making of this improvement will require the closing to traffic of the highway and that detours will be provided as shown on the plan and estimates.



LOCATION PLAN  
SCALE OF MILES

PORTION TO BE IMPROVED  
DETOUR SHOWN THUS  
IMPROVED ROADS

SCALES

Plan	1" = 100'
Profile Vertical	1" = 10'
Profile Horizontal	1" = 100'
Cross Sections	1" = 5'

INDEX

Title Sheet	Page 1
Typical Cross Section	2
Plans and Profile	3-9
Cross Sections	10-23
Structural Plans	24-29
Summary Sheet	29-30

SUPPLEMENTAL PRINTS OF STRUCTURAL STANDARDS

Drawing Number  
# 300; # 305; AS-2430;  
B-30-2430; SC-A.  
95; 98; 100

- Approved Karl Mohr  
Date 5/21/29 Resident District Deputy Director
- Approved John F. Gallin  
Date 6-28-29 Resident Division Deputy Director
- Approved \_\_\_\_\_  
Date \_\_\_\_\_ Chief Engineer Bureau of Construction
- Approved \_\_\_\_\_  
Date \_\_\_\_\_ Chief Engineer Bureau of Maintenance
- Approved J. Burkey  
Date 10-25-29 Chief Engineer Bureau of Bridges
- Approved W. Burkey  
Date 10-30-29 Chief Engineer and First Assistant Director
- Approved \_\_\_\_\_  
Date 10-30-29 Director of Highways
- Recommended for Approval \_\_\_\_\_  
Date \_\_\_\_\_ District Engineer Bureau of Public Roads
- Recommended for Approval \_\_\_\_\_  
Date \_\_\_\_\_ Chief Engineer Bureau of Public Roads
- Approved \_\_\_\_\_  
Date \_\_\_\_\_ Chief of Bureau

CONVENTIONAL SIGNS

- State Line -----
- County Line -----
- Township Line -----
- Section Line -----
- Property Line not fenced -----
- Center Line -----
- City or Village Line -----
- Fence -----
- Telephone or Telegraph T T T T T
- Steam Railroad -----
- Electric Line -----
- Guard Rail -----
- Drain Pipe new -----
- Drain Pipe old -----

We, the Commissioners of Fulton County, hereby approve these plans and certify that the right-of-way 60 feet wide is available for the construction, maintenance and repair of the above highway.

M. A. Balthus

Edwin Russell

T. I. Cummend

Date 5/21/29 County Commissioners



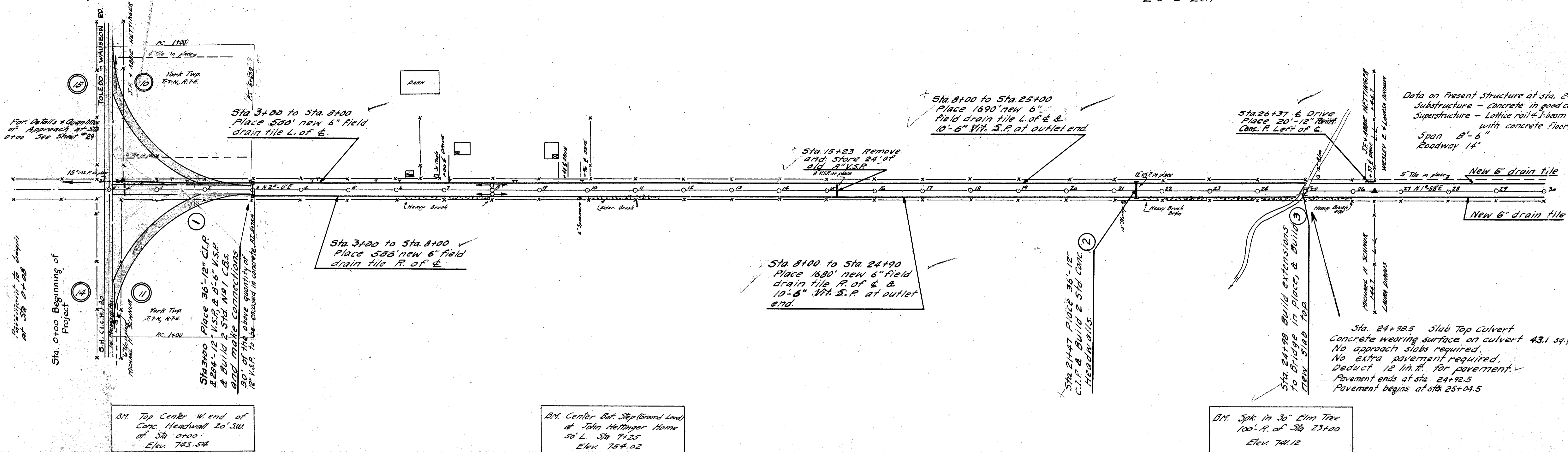
Sta 0+00 Sec. Cor. Stone (Iron Pin in Plac)  
 1" Gas Pipe in fence line 44' NW  
 Spk in Arc. Post 32.5' SW  
 SW. cor. W. pt. Headwall 24.5' SW  
 NW. cor. W. pt. Headwall 24.8' NW  
 bearing N. 2° 0' E.

Sta 26+44.7 Sec. 1/4 Stone (Tie Above)  
 1" Iron Rod in fence line 32.5' East  
 1" Iron Rod in fence line 32.5' West  
 Stone is on line & Midway Between Iron Rods  
 Spk in S. Gate Post 27.1' SW  
 Near Side Arc. Post 20.5' E. (+ in line of Fence E.W.)  
 L. 0° 2' - Left

FED. AID DIST. NO.	STATE	FED. AID PROJECT	FISCAL YEAR
10	OHIO		1929

S.H. ICH 299 SEC. B-1  
 FULTON COUNTY

3  
 30

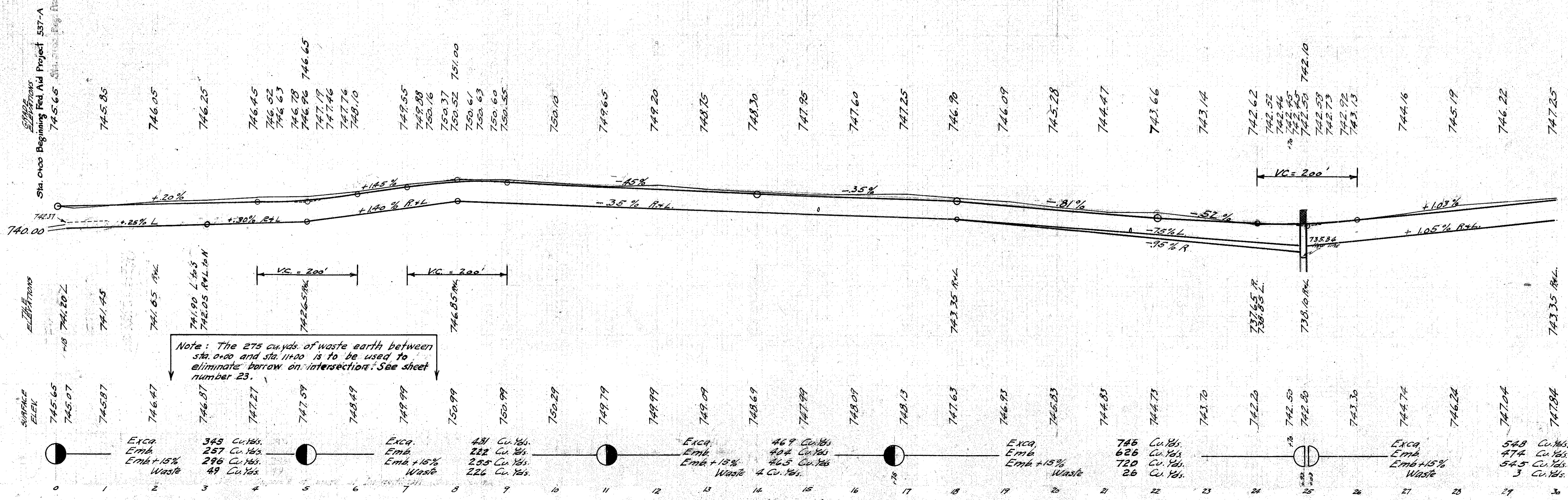


B.M. Top Center W. end of Conc. Headwall 20' SW of Sta 0+00 Elev. 743.54

B.M. Center But Step (Ground Level) at John Heitinger Home 50' L. Sta 9+25 Elev. 754.02

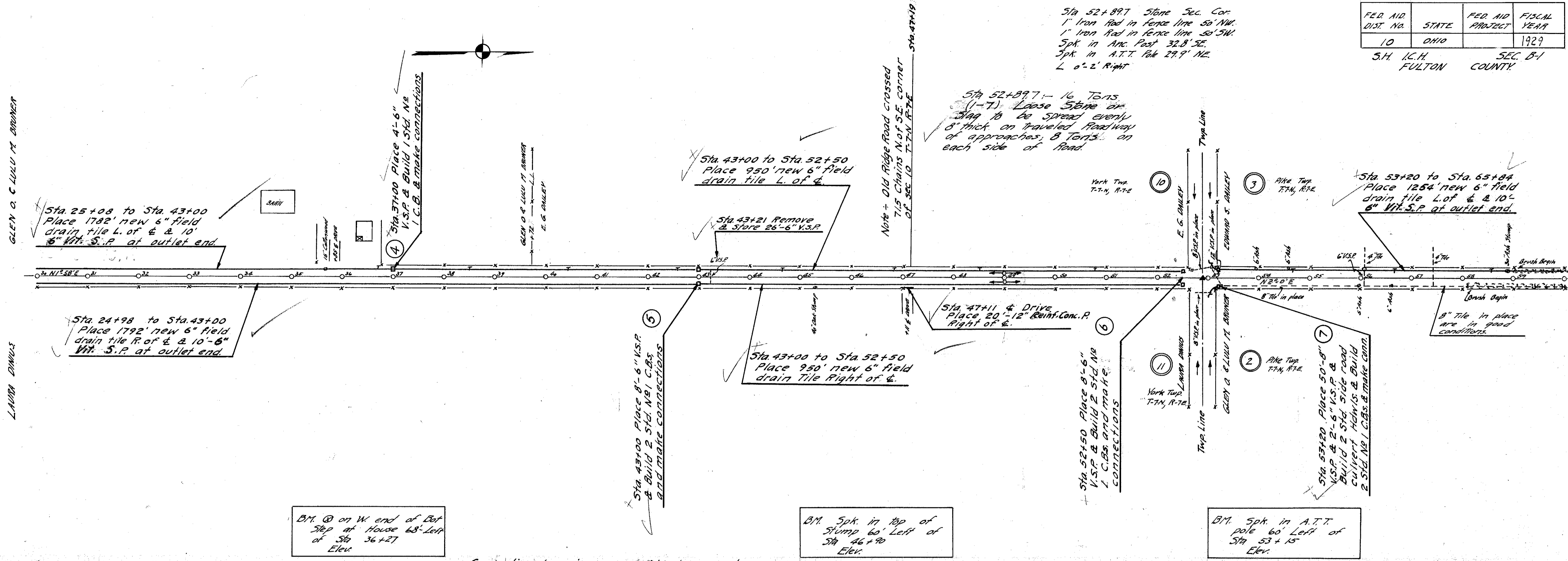
B.M. Spk in 30' Elm Tree 100' P. of Sta 23+00 Elev. 744.12

Grade line shown is crown of finished pavement



FED. AID DIST. NO.	STATE	FED. AID PROJECT	FISCAL YEAR
10	OHIO		1929

S.H. I.C.H. SEC. B-1  
FULTON COUNTY

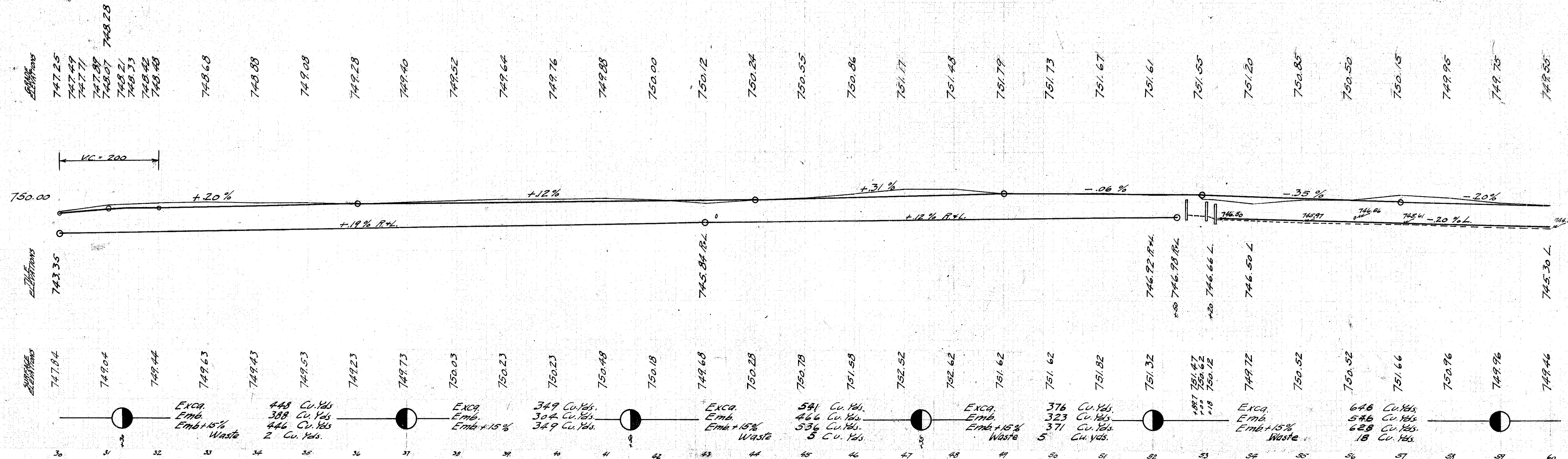


BM. @ on W. end of Det. Step at House 68' Left of Sta 36+27 Elev

BM. Spk. in top of Stump 60' Left of Sta 46+70 Elev.

BM. Spk. in A.T.T. pole 60' Left of Sta 53+15 Elev.

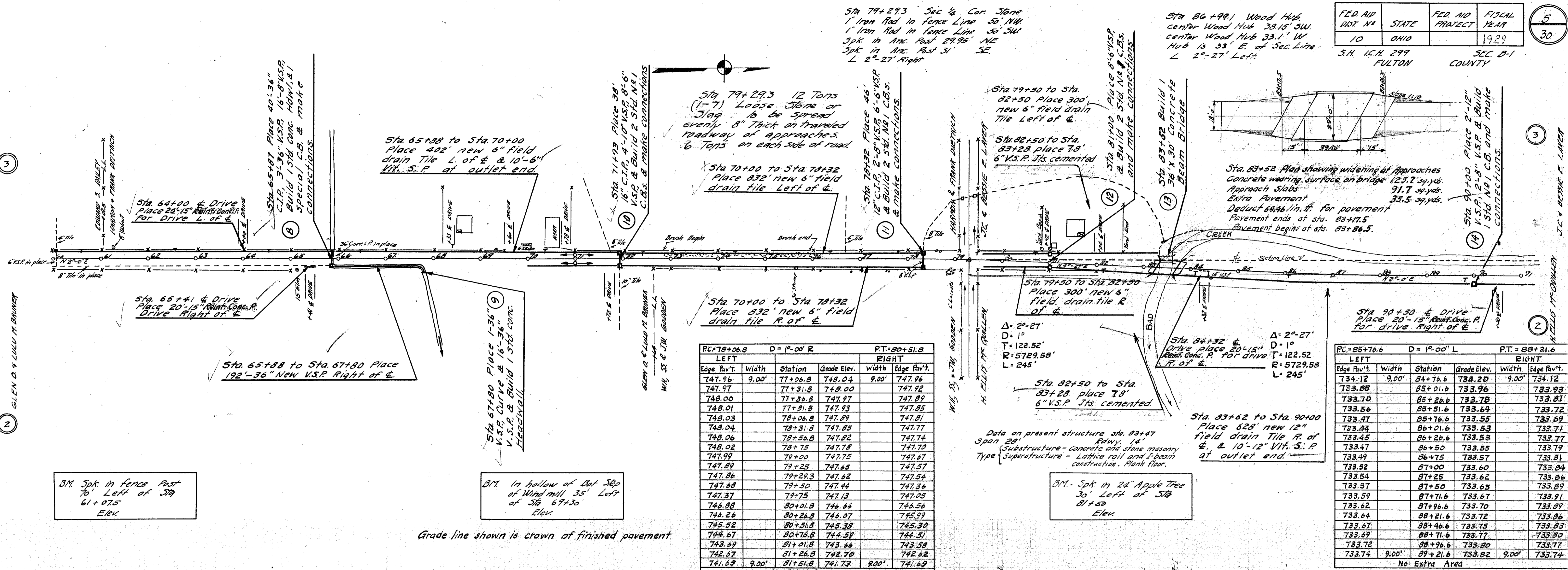
Grade line shown is crown of finished pavement



FED. AID DIST. NO.	STATE	FED. AID PROJECT	FISCAL YEAR
10	OHIO	5H. ICH. 299	1929

5  
30

5H. ICH. 299  
FULTON COUNTY

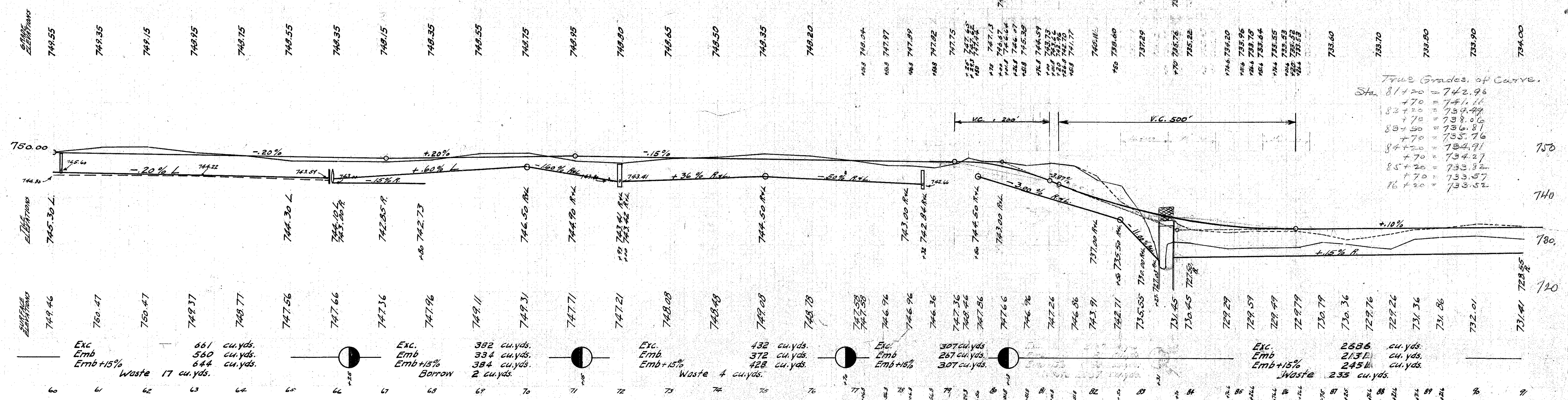


RC+79+06.8		D=1°-00' R		P.T.=80+51.8	
LEFT				RIGHT	
Edge Pav't.	Width	Station	Grade Elev.	Width	Edge Pav't.
747.96	9.00'	77+06.8	748.04	9.00'	747.96
747.97		77+31.8	748.00		747.92
748.00		77+56.8	747.97		747.89
748.01		77+81.8	747.93		747.85
748.03		78+06.8	747.89		747.81
748.04		78+31.8	747.85		747.77
748.06		78+56.8	747.82		747.74
748.02		78+15	747.78		747.70
747.99		79+20	747.75		747.67
747.89		79+25	747.65		747.57
747.86		79+29.3	747.62		747.54
747.68		79+50	747.44		747.36
747.37		79+75	747.13		747.05
746.88		80+01.8	746.64		746.56
746.26		80+26.8	746.07		745.99
745.52		80+51.8	745.38		745.30
744.67		80+76.8	744.59		744.51
743.89		81+01.8	743.66		743.58
742.67		81+26.8	742.70		742.62
741.69	9.00'	81+51.8	741.73	9.00'	741.69

No Extra Area

PC=85+76.6		D=1°-00' L		P.T.=88+21.6	
LEFT				RIGHT	
Edge Pav't.	Width	Station	Grade Elev.	Width	Edge Pav't.
734.12	9.00'	84+76.6	734.20	9.00'	734.12
733.88		85+01.6	733.96		733.93
733.70		85+26.6	733.78		733.81
733.56		85+51.6	733.64		733.72
733.47		85+76.6	733.55		733.69
733.44		86+01.6	733.53		733.71
733.45		86+26.6	733.53		733.77
733.47		86+50	733.55		733.79
733.49		86+75	733.57		733.81
733.52		87+00	733.60		733.84
733.54		87+25	733.62		733.86
733.57		87+50	733.65		733.89
733.59		87+75	733.67		733.91
733.62		88+00	733.70		733.89
733.64		88+21.6	733.72		733.86
733.67		88+46.6	733.75		733.83
733.69		88+71.6	733.77		733.80
733.72		88+96.6	733.80		733.77
733.74	9.00'	89+21.6	733.82	9.00'	733.74

No Extra Area



True Grades of Curve.

Sta. 81+20	= 742.96
470	= 741.11
82+20	= 739.44
470	= 738.06
83+50	= 736.81
470	= 735.76
84+20	= 734.91
470	= 734.27
85+20	= 733.82
470	= 733.57
86+20	= 733.52

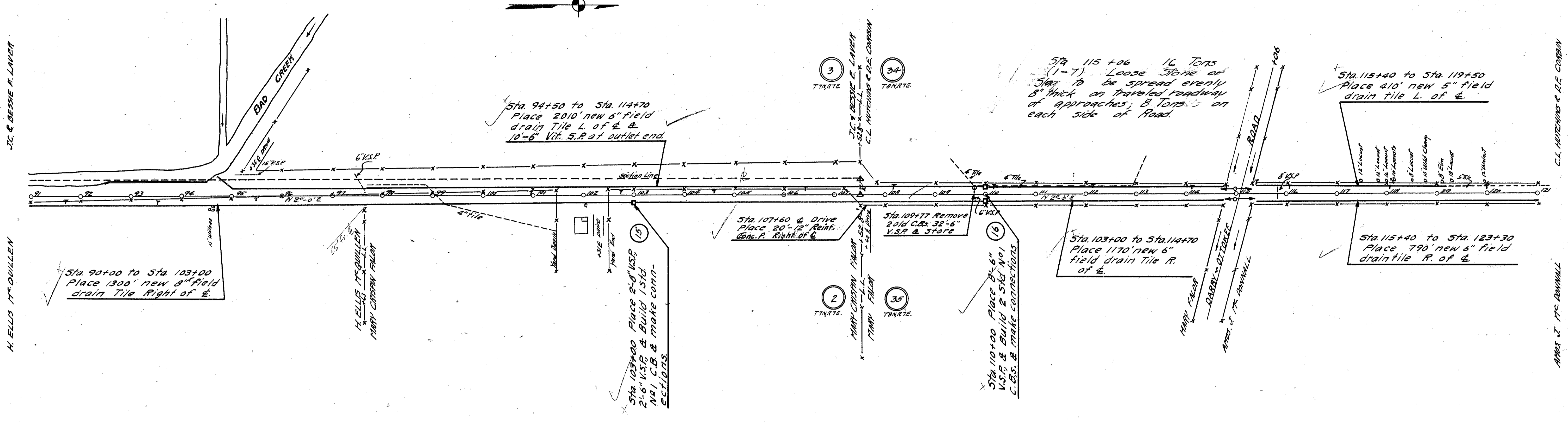
FED. AID DIST. NO.	STATE	FED. AID PROJECT	FISCAL YEAR
10	OHIO		1929

6  
30

S.H. 16.H. 299 SEC. 8-1  
FULTON COUNTY

Sta 107+52.8 Stone Sec. Co. (West corner)  
Spk. in Anc. Post 21.1' W.  
Spk. in Anc. Post 31.9' N  
Wood Hub in fence line 28' SW  
1" Gas Pipe N side fence line 24' W.  
Stone in line with fence to W.  
& 33' W. of E. Stone

Sta 107+52.8 Stone Sec. Co. (East Corner)  
Spk. in Anc. Post 53.9' W.  
Spk. in Anc. Post 37.1' NW.  
Wood Hub in fence line 45' E.  
1" Gas Pipe N side fence line 16' W. ST. W.  
Stone in line with fence to E.  
L. 0'-6' R



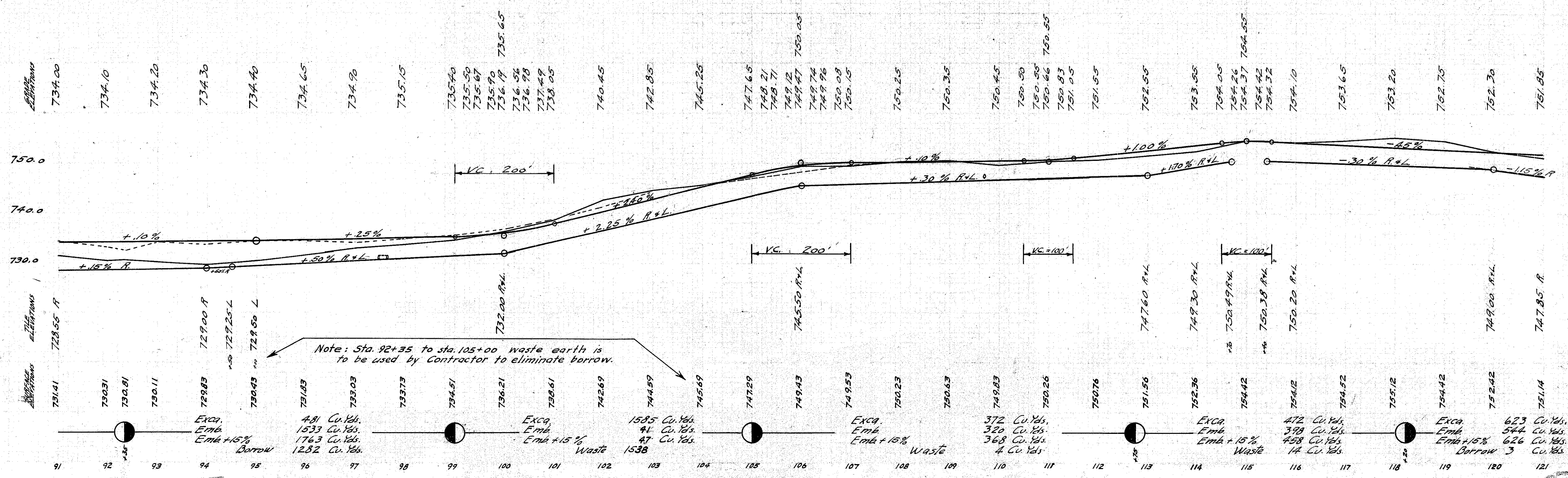
B.M. + on concrete Retaining wall West of 200' post 5' ft. L. of Sta. 92+64 Elev. 732.20

B.M. Spike in 20' oak tree 65 ft Left. Sta. 103+75 Elev. 748.02

B.M. Spike in fence post 35 ft. Left of Sta. 114+80 Elev. 754.99

B.M. Spike in 8" White ash tree 44' Left of Sta. 119+46 Elev. 754.38

Grade line shown is crown of finished pavement



FED. AID DIST. NO.	STATE	FED. AID PROJECT	FISCAL YEAR.
10	OHIO		1929

7  
30

S.H. I.C.H. 299 SEC. 8-1  
FULTON COUNTY

Sta 134+09.1 Sec. 1/4 Stone  
Wood Hub in fence line 40'E  
Wood Hub N. side Rail fence 40'W  
Spk. in Arc. Post 20.2' W  
Spk. in fence Post 22.8' NW  
In line with fence E. + W.  
L 0°-10' Right

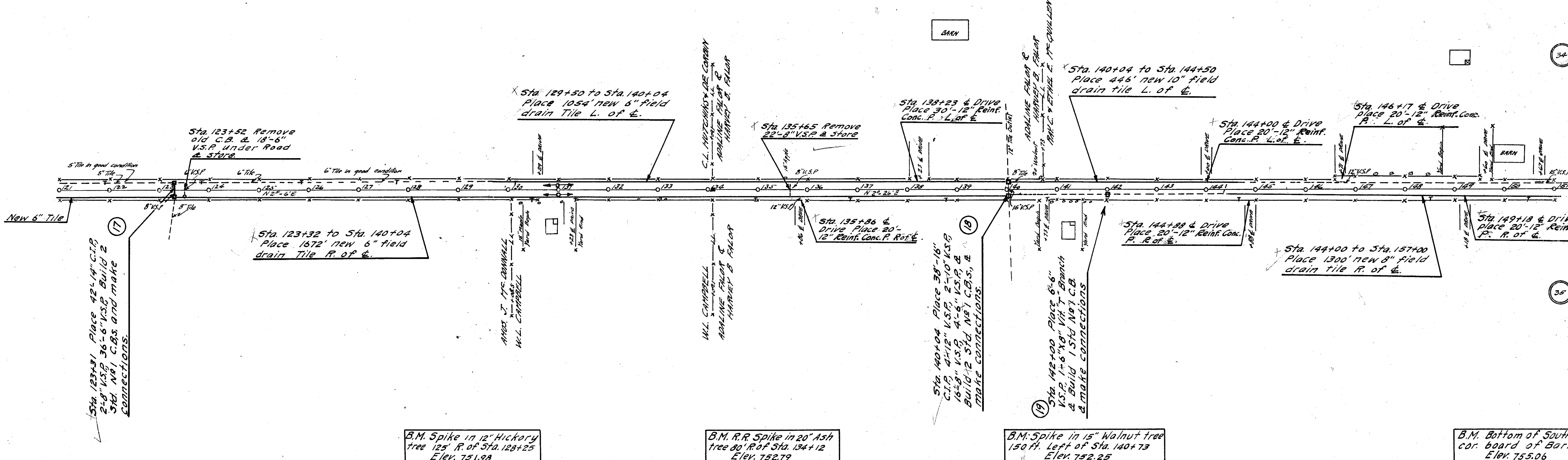


C.L. HUTCHINS & DE. CORBIN

AMOS J. MC DONNELL

ADALINE FALOR & HARVEY E. FALOR

ADALINE FALOR & HARVEY E. FALOR



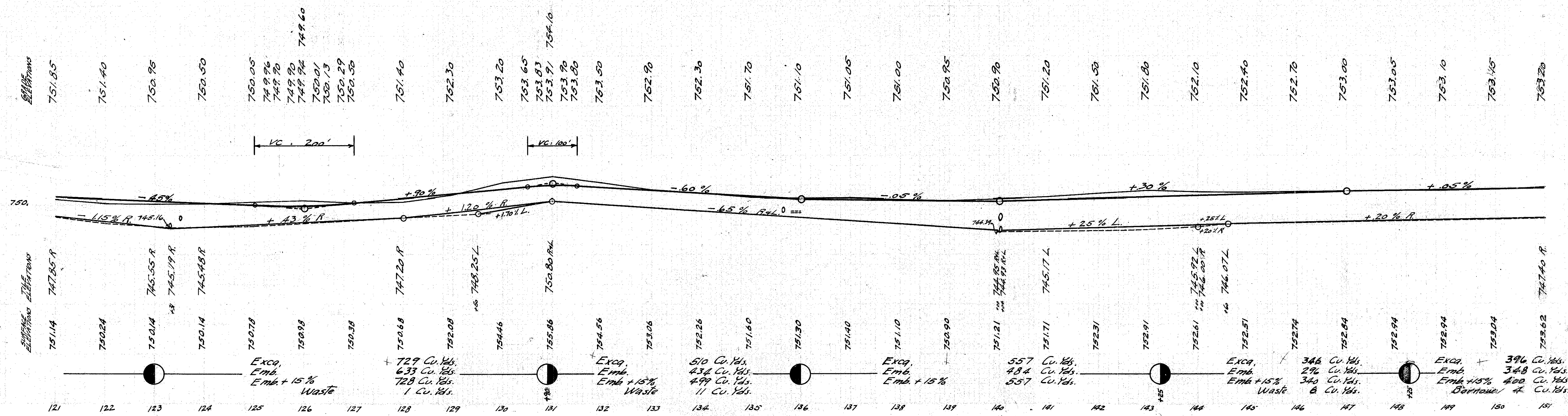
B.M. Spike in 12" Hickory tree 125' R. of Sta. 128+25 Elev. 751.98

B.M. R.R. Spike in 20" Ash tree 80' R. of Sta. 134+12 Elev. 752.79

B.M. Spike in 15" Walnut tree 150 ft. Left of Sta. 140+73 Elev. 752.25

B.M. Bottom of South East cor. board of Barn Elev. 755.06

Grade line shown is crown of finished pavement



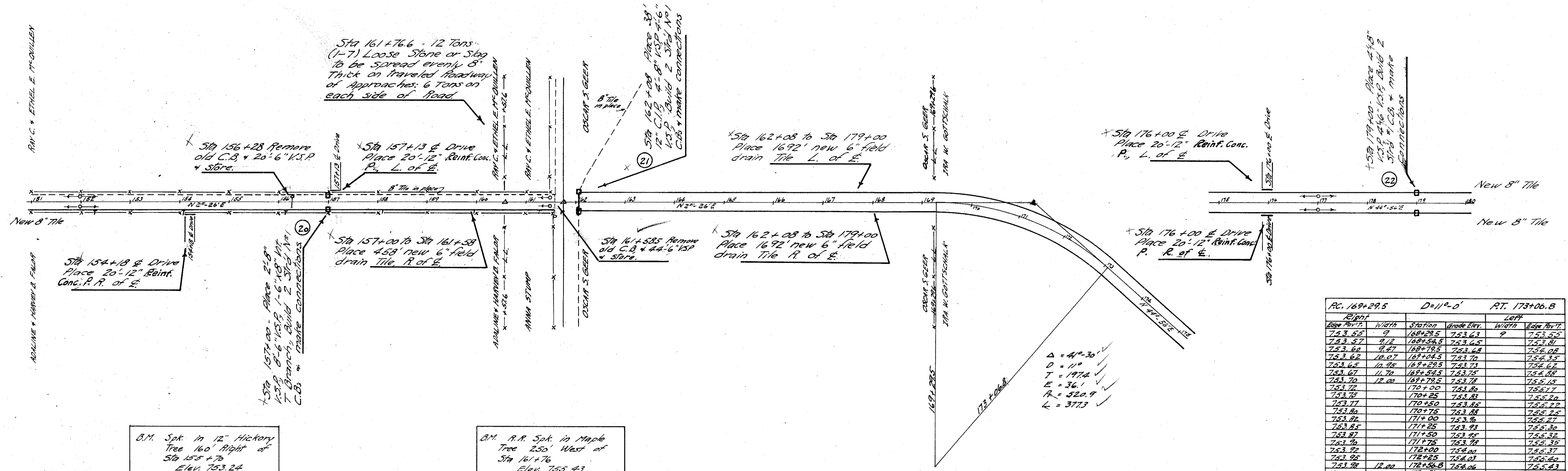
FED. NO.	STATE	FED. NO.	FISCAL YEAR
10	OHIO		

S.H. 164 299 SEC. 8-1  
FULTON COUNTY

Sta 160+57.6 Sec. Cor. Stone  
Wood Hub N side fence line 35' E  
in line with fence to E.  
Stone 119' S. of Sec. Cor. to N.

Sta 161+76.6 Sec. Cor. 1" Iron Rod  
Spk in 7'11" Pole 419 NW  
1" Iron Rod (3' N of fence) 50' SW  
Spk in Arc. Post 35.2 SW

Sta 171+26.9 PI on Curve  
Wood Hub 40' West  
Wood Hub 40' North



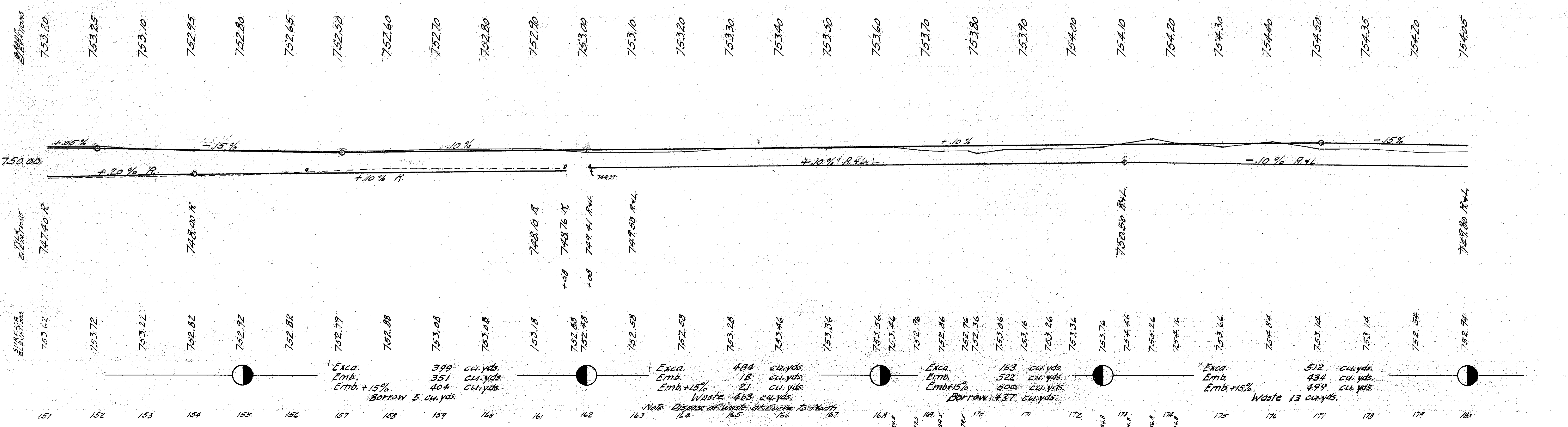
B.M. Spk in 12" Hickory Tree 160' Right of Sta 155+76 Elev. 753.24

B.M. R.R. Spk in Maple Tree 250' West of Sta 161+76 Elev. 755.43

Note: Grade Line shown is crown of finished pavement.

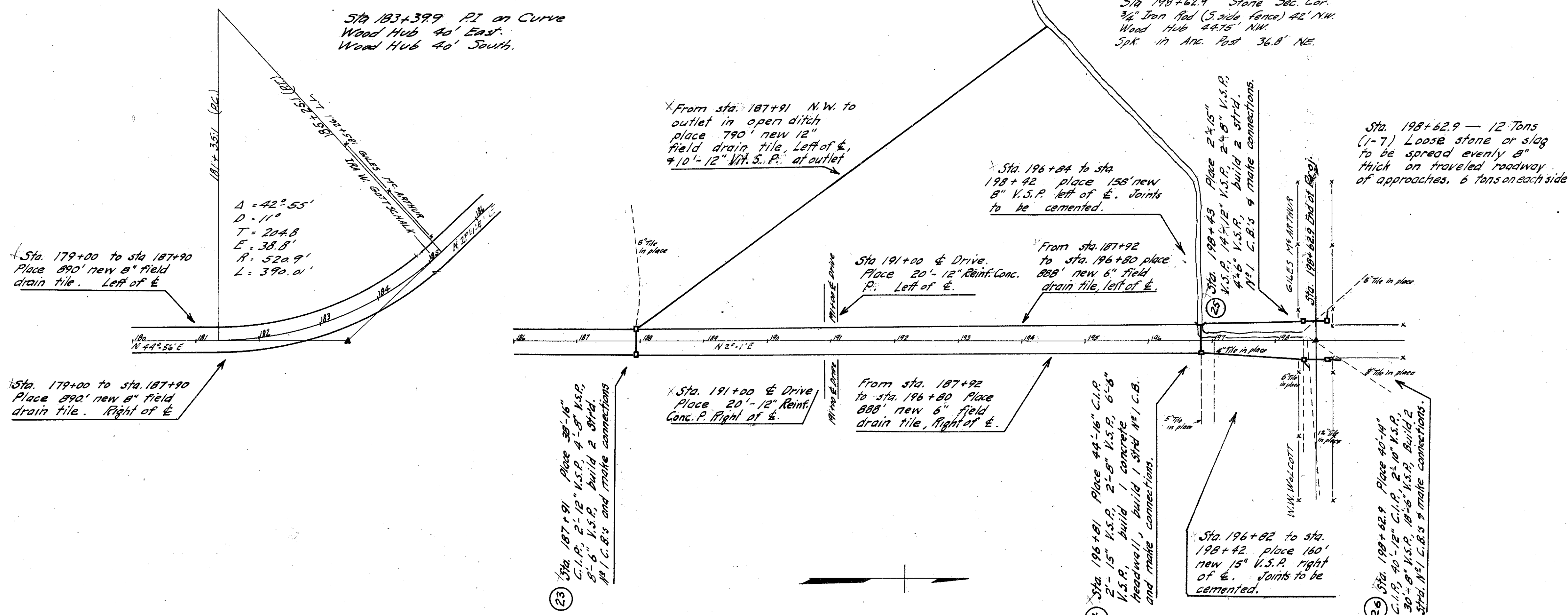
Right	Station	Grade Elev.	Left	Edge Elev.
753.25	168+29.5	753.63	9	753.55
753.57	168+54.5	753.65	9	753.81
753.60	168+79.5	753.64	9	753.82
753.62	169+04.5	753.70	9	753.85
753.65	169+29.5	753.73	9	753.87
753.67	169+54.5	753.75	9	753.88
753.70	169+79.5	753.78	9	753.89
753.72	170+00	753.80	9	753.91
753.75	170+25	753.82	9	753.92
753.77	170+50	753.84	9	753.93
753.80	170+75	753.86	9	753.94
753.82	171+00	753.88	9	753.95
753.85	171+25	753.93	9	753.96
753.87	171+50	753.95	9	753.97
753.90	171+75	753.97	9	753.98
753.92	172+00	753.99	9	753.99
753.95	172+25	754.01	9	754.00
753.98	172+50	754.03	9	754.01
754.00	172+75	754.04	9	754.02
754.03	173+00	754.05	9	754.03
754.04	173+25	754.06	9	754.04
754.05	173+50	754.07	9	754.05
754.06	173+75	754.08	9	754.06
754.07	174+00	754.09	9	754.07
754.08	174+25	754.10	9	754.08
754.09	174+50	754.11	9	754.09
754.10	174+75	754.12	9	754.10
754.11	175+00	754.13	9	754.11
754.12	175+25	754.14	9	754.12
754.13	175+50	754.15	9	754.13
754.14	175+75	754.16	9	754.14
754.15	176+00	754.17	9	754.15

Extra Pavement = 133.4 Sq. Yds. ✓



FED. AID DIST. NO.	STATE	FED. AID PROJECT	FISCAL YEAR
10	OHIO		

S.H. 168 299 SEC. B-1  
FULTON COUNTY



Right	Left
Edge Pavt. Width Station Grade Elev. Width Edge Pavt.	Edge Pavt. Width Station Grade Elev. Width Edge Pavt.
753.92 9.00 180+35.1 754.00 9.00 753.92	754.12 9.00 180+60.1 753.96 9.12 753.88
754.12 9.00 180+60.1 753.96 9.12 753.88	754.32 9.00 180+85.1 753.92 9.17 753.84
754.32 9.00 180+85.1 753.92 9.17 753.84	754.53 9.00 181+10.1 753.88 9.27 753.80
754.53 9.00 181+10.1 753.88 9.27 753.80	754.74 9.00 181+35.1 753.85 9.35 753.77
754.74 9.00 181+35.1 753.85 9.35 753.77	754.94 9.00 181+60.1 753.81 9.40 753.73
754.94 9.00 181+60.1 753.81 9.40 753.73	755.14 9.00 181+85.1 753.77 9.45 753.69
755.14 9.00 181+85.1 753.77 9.45 753.69	755.34 9.00 182+10.1 753.73 9.50 753.65
755.34 9.00 182+10.1 753.73 9.50 753.65	755.54 9.00 182+35.1 753.69 9.55 753.61
755.54 9.00 182+35.1 753.69 9.55 753.61	755.74 9.00 182+60.1 753.65 9.60 753.57
755.74 9.00 182+60.1 753.65 9.60 753.57	755.94 9.00 182+85.1 753.61 9.65 753.53
755.94 9.00 182+85.1 753.61 9.65 753.53	756.14 9.00 183+10.1 753.57 9.70 753.49
756.14 9.00 183+10.1 753.57 9.70 753.49	756.34 9.00 183+35.1 753.53 9.75 753.45
756.34 9.00 183+35.1 753.53 9.75 753.45	756.54 9.00 183+60.1 753.49 9.80 753.41
756.54 9.00 183+60.1 753.49 9.80 753.41	756.74 9.00 183+85.1 753.45 9.85 753.37
756.74 9.00 183+85.1 753.45 9.85 753.37	756.94 9.00 184+10.1 753.41 9.90 753.33
756.94 9.00 184+10.1 753.41 9.90 753.33	757.14 9.00 184+35.1 753.37 9.95 753.29
757.14 9.00 184+35.1 753.37 9.95 753.29	757.34 9.00 184+60.1 753.33 10.00 753.25
757.34 9.00 184+60.1 753.33 10.00 753.25	757.54 9.00 184+85.1 753.29 10.05 753.21
757.54 9.00 184+85.1 753.29 10.05 753.21	757.74 9.00 185+10.1 753.25 10.10 753.17
757.74 9.00 185+10.1 753.25 10.10 753.17	757.94 9.00 185+35.1 753.21 10.15 753.13
757.94 9.00 185+35.1 753.21 10.15 753.13	758.14 9.00 185+60.1 753.17 10.20 753.09
758.14 9.00 185+60.1 753.17 10.20 753.09	758.34 9.00 185+85.1 753.13 10.25 753.05
758.34 9.00 185+85.1 753.13 10.25 753.05	758.54 9.00 186+10.1 753.09 10.30 753.01
758.54 9.00 186+10.1 753.09 10.30 753.01	758.74 9.00 186+35.1 753.05 10.35 752.97
758.74 9.00 186+35.1 753.05 10.35 752.97	758.94 9.00 186+60.1 753.01 10.40 752.93
758.94 9.00 186+60.1 753.01 10.40 752.93	759.14 9.00 186+85.1 752.97 10.45 752.89
759.14 9.00 186+85.1 752.97 10.45 752.89	759.34 9.00 187+10.1 752.93 10.50 752.85
759.34 9.00 187+10.1 752.93 10.50 752.85	759.54 9.00 187+35.1 752.89 10.55 752.81
759.54 9.00 187+35.1 752.89 10.55 752.81	759.74 9.00 187+60.1 752.85 10.60 752.77
759.74 9.00 187+60.1 752.85 10.60 752.77	759.94 9.00 187+85.1 752.81 10.65 752.73
759.94 9.00 187+85.1 752.81 10.65 752.73	760.14 9.00 188+10.1 752.77 10.70 752.69
760.14 9.00 188+10.1 752.77 10.70 752.69	760.34 9.00 188+35.1 752.73 10.75 752.65
760.34 9.00 188+35.1 752.73 10.75 752.65	760.54 9.00 188+60.1 752.69 10.80 752.61
760.54 9.00 188+60.1 752.69 10.80 752.61	760.74 9.00 188+85.1 752.65 10.85 752.57
760.74 9.00 188+85.1 752.65 10.85 752.57	760.94 9.00 189+10.1 752.61 10.90 752.53
760.94 9.00 189+10.1 752.61 10.90 752.53	761.14 9.00 189+35.1 752.57 10.95 752.49
761.14 9.00 189+35.1 752.57 10.95 752.49	761.34 9.00 189+60.1 752.53 11.00 752.45
761.34 9.00 189+60.1 752.53 11.00 752.45	761.54 9.00 189+85.1 752.49 11.05 752.41
761.54 9.00 189+85.1 752.49 11.05 752.41	761.74 9.00 190+10.1 752.45 11.10 752.37
761.74 9.00 190+10.1 752.45 11.10 752.37	761.94 9.00 190+35.1 752.41 11.15 752.33
761.94 9.00 190+35.1 752.41 11.15 752.33	762.14 9.00 190+60.1 752.37 11.20 752.29
762.14 9.00 190+60.1 752.37 11.20 752.29	762.34 9.00 190+85.1 752.33 11.25 752.25
762.34 9.00 190+85.1 752.33 11.25 752.25	762.54 9.00 191+10.1 752.29 11.30 752.21
762.54 9.00 191+10.1 752.29 11.30 752.21	762.74 9.00 191+35.1 752.25 11.35 752.17
762.74 9.00 191+35.1 752.25 11.35 752.17	762.94 9.00 191+60.1 752.21 11.40 752.13
762.94 9.00 191+60.1 752.21 11.40 752.13	763.14 9.00 191+85.1 752.17 11.45 752.09
763.14 9.00 191+85.1 752.17 11.45 752.09	763.34 9.00 192+10.1 752.13 11.50 752.05
763.34 9.00 192+10.1 752.13 11.50 752.05	763.54 9.00 192+35.1 752.09 11.55 752.01
763.54 9.00 192+35.1 752.09 11.55 752.01	763.74 9.00 192+60.1 752.05 11.60 751.97
763.74 9.00 192+60.1 752.05 11.60 751.97	763.94 9.00 192+85.1 752.01 11.65 751.93
763.94 9.00 192+85.1 752.01 11.65 751.93	764.14 9.00 193+10.1 751.97 11.70 751.89
764.14 9.00 193+10.1 751.97 11.70 751.89	764.34 9.00 193+35.1 751.93 11.75 751.85
764.34 9.00 193+35.1 751.93 11.75 751.85	764.54 9.00 193+60.1 751.89 11.80 751.81
764.54 9.00 193+60.1 751.89 11.80 751.81	764.74 9.00 193+85.1 751.85 11.85 751.77
764.74 9.00 193+85.1 751.85 11.85 751.77	764.94 9.00 194+10.1 751.81 11.90 751.73
764.94 9.00 194+10.1 751.81 11.90 751.73	765.14 9.00 194+35.1 751.77 11.95 751.69
765.14 9.00 194+35.1 751.77 11.95 751.69	765.34 9.00 194+60.1 751.73 12.00 751.65
765.34 9.00 194+60.1 751.73 12.00 751.65	765.54 9.00 194+85.1 751.69 12.05 751.61
765.54 9.00 194+85.1 751.69 12.05 751.61	765.74 9.00 195+10.1 751.65 12.10 751.57
765.74 9.00 195+10.1 751.65 12.10 751.57	765.94 9.00 195+35.1 751.61 12.15 751.53
765.94 9.00 195+35.1 751.61 12.15 751.53	766.14 9.00 195+60.1 751.57 12.20 751.49
766.14 9.00 195+60.1 751.57 12.20 751.49	766.34 9.00 195+85.1 751.53 12.25 751.45
766.34 9.00 195+85.1 751.53 12.25 751.45	766.54 9.00 196+10.1 751.49 12.30 751.41
766.54 9.00 196+10.1 751.49 12.30 751.41	766.74 9.00 196+35.1 751.45 12.35 751.37
766.74 9.00 196+35.1 751.45 12.35 751.37	766.94 9.00 196+60.1 751.41 12.40 751.33
766.94 9.00 196+60.1 751.41 12.40 751.33	767.14 9.00 196+85.1 751.37 12.45 751.29
767.14 9.00 196+85.1 751.37 12.45 751.29	767.34 9.00 197+10.1 751.33 12.50 751.25
767.34 9.00 197+10.1 751.33 12.50 751.25	767.54 9.00 197+35.1 751.29 12.55 751.21
767.54 9.00 197+35.1 751.29 12.55 751.21	767.74 9.00 197+60.1 751.25 12.60 751.17
767.74 9.00 197+60.1 751.25 12.60 751.17	767.94 9.00 197+85.1 751.21 12.65 751.13
767.94 9.00 197+85.1 751.21 12.65 751.13	768.14 9.00 198+10.1 751.17 12.70 751.09
768.14 9.00 198+10.1 751.17 12.70 751.09	768.34 9.00 198+35.1 751.13 12.75 751.05
768.34 9.00 198+35.1 751.13 12.75 751.05	768.54 9.00 198+60.1 751.09 12.80 751.01
768.54 9.00 198+60.1 751.09 12.80 751.01	768.74 9.00 198+85.1 751.05 12.85 750.97
768.74 9.00 198+85.1 751.05 12.85 750.97	768.94 9.00 199+10.1 751.01 12.90 750.93
768.94 9.00 199+10.1 751.01 12.90 750.93	769.14 9.00 199+35.1 750.97 12.95 750.89
769.14 9.00 199+35.1 750.97 12.95 750.89	769.34 9.00 199+60.1 750.93 13.00 750.85
769.34 9.00 199+60.1 750.93 13.00 750.85	769.54 9.00 199+85.1 750.89 13.05 750.81
769.54 9.00 199+85.1 750.89 13.05 750.81	769.74 9.00 200+10.1 750.85 13.10 750.77
769.74 9.00 200+10.1 750.85 13.10 750.77	769.94 9.00 200+35.1 750.81 13.15 750.73
769.94 9.00 200+35.1 750.81 13.15 750.73	770.14 9.00 200+60.1 750.77 13.20 750.69
770.14 9.00 200+60.1 750.77 13.20 750.69	770.34 9.00 200+85.1 750.73 13.25 750.65
770.34 9.00 200+85.1 750.73 13.25 750.65	770.54 9.00 201+10.1 750.69 13.30 750.61
770.54 9.00 201+10.1 750.69 13.30 750.61	770.74 9.00 201+35.1 750.65 13.35 750.57
770.74 9.00 201+35.1 750.65 13.35 750.57	770.94 9.00 201+60.1 750.61 13.40 750.53
770.94 9.00 201+60.1 750.61 13.40 750.53	771.14 9.00 201+85.1 750.57 13.45 750.49
771.14 9.00 201+85.1 750.57 13.45 750.49	771.34 9.00 202+10.1 750.53 13.50 750.45
771.34 9.00 202+10.1 750.53 13.50 750.45	771.54 9.00 202+35.1 750.49 13.55 750.41
771.54 9.00 202+35.1 750.49 13.55 750.41	771.74 9.00 202+60.1 750.45 13.60 750.37
771.74 9.00 202+60.1 750.45 13.60 750.37	771.94 9.00 202+85.1 750.41 13.65 750.33
771.94 9.00 202+85.1 750.41 13.65 750.33	772.14 9.00 203+10.1 750.37 13.70 750.29
772.14 9.00 203+10.1 750.37 13.70 750.29	772.34 9.00 203+35.1 750.33 13.75 750.25
772.34 9.00 203+35.1 750.33 13.75 750.25	772.54 9.00 203+60.1 750.29 13.80 750.21
772.54 9.00 203+60.1 750.29 13.80 750.21	772.74 9.00 203+85.1 750.25 13.85 750.17
772.74 9.00 203+85.1 750.25 13.85 750.17	772.94 9.00 204+10.1 750.21 13.90 750.13
772.94 9.00 204+10.1 750.21 13.90 750.13	773.14 9.00 204+35.1 750.17 13.95 750.09
773.14 9.00 204+35.1 750.17 13.95 750.09	773.34 9.00 204+60.1 750.13 14.00 750.05
773.34 9.00 204+60.1 750.13 14.00 750.05	773.54 9.00 204+85.1 750.09 14.05 750.01
773.54 9.00 204+85.1 750.09 14.05 750.01	773.74 9.00 205+10.1 750.05 14.10 749.97
773.74 9.00 205+10.1 750.05 14.10 749.97	773.94 9.00 205+35.1 750.01 14.15 749.93
773.94 9.00 205+35.1 750.01 14.15 749.93	774.14 9.00 205+60.1 749.97 14.20 749.89
774.14 9.00 205+60.1 749.97 14.20 749.89	774.34 9.00 205+85.1 749.93 14.25 749.85
774.34 9.00 205+85.1 749.93 14.25 749.85	774.54 9.00 206+10.1 749.89 14.30 749.81
774.54 9.00 206+10.1 749.89 14.30 749.81	774.74 9.00 206+35.1 749.85 14.35 749.77
774.74 9.00 206+35.1 749.85 14.35 749.77	774.94 9.00 206+60.1 749.81 14.40 749.73
774.94 9.00 206+60.1 749.81 14.40 749.73	775.14 9.00 206+85.1 749.77 14.45 749.69
775.14 9.00 206+85.1 749.77 14.45 749.69	775.34 9.00 207+10.1 749.73 14.50 749.65
775.34 9.00 207+10.1 749.73 14.50 749.65	775.54 9.00 207+35.1 749.69 14.55 749.61
775.54 9.00 207+35.1 749.69 14.55 749.61	775.74 9.00 207+60.1 749.65 14.60 749.57
775.74 9.00 207+60.1 749.65 14.60 749.57	775.94 9.00 207+85.1 749.61 14.65 749.53
775.94 9.00 207+85.1 749.61 14.65 749.53	776.14 9.00 208+10.1 749.57 14.70 749.49
776.14 9.00 208+10.1 749.57 14.70 749.49	776.34 9.00 208+35.1 749.53 14.75 749.45
776.34 9.00 208+35.1 749.53 14.75 749.45	776.54 9.00 208+60.1 749.49 14.80 749.41
776.54 9.00 208+60.1 749.49 14.80 749.41	776.74 9.00 208+85.1 749.45 14.85 749.37
776.74 9.00 208+85.1 749.45 14.85 749.37	776.94 9.00 209+10.1 749.41 14.90 749.33
776.94 9.00 209+10.1 749.41 14.90 749.33	777.14 9.00 209+35.1 749.37 14.95 749.29
777.14 9.00 209+35.1 749.37 14.95 749.29	777.34 9.00 209+60.1 749.33 15.00 749.25
777.34 9.00 209+60.1 749.33 15.00 749.25	777.54 9.00 209+85.1 749.29 15.05 749.21
777.54 9.00 209+85.1 749.29 15.05 749.21	777.74 9.00 210+10.1 749.25 15.10 749.17
777.74 9.00 210+10.1 749.25 15.10 749.17	777.94 9.00 210+35.1 749.21 15.1