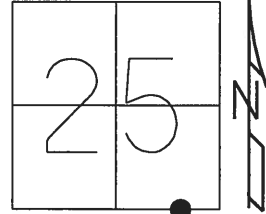


O.D.O.T. DISTRICT 2 SURVEY OFFICE (USE ONLY)

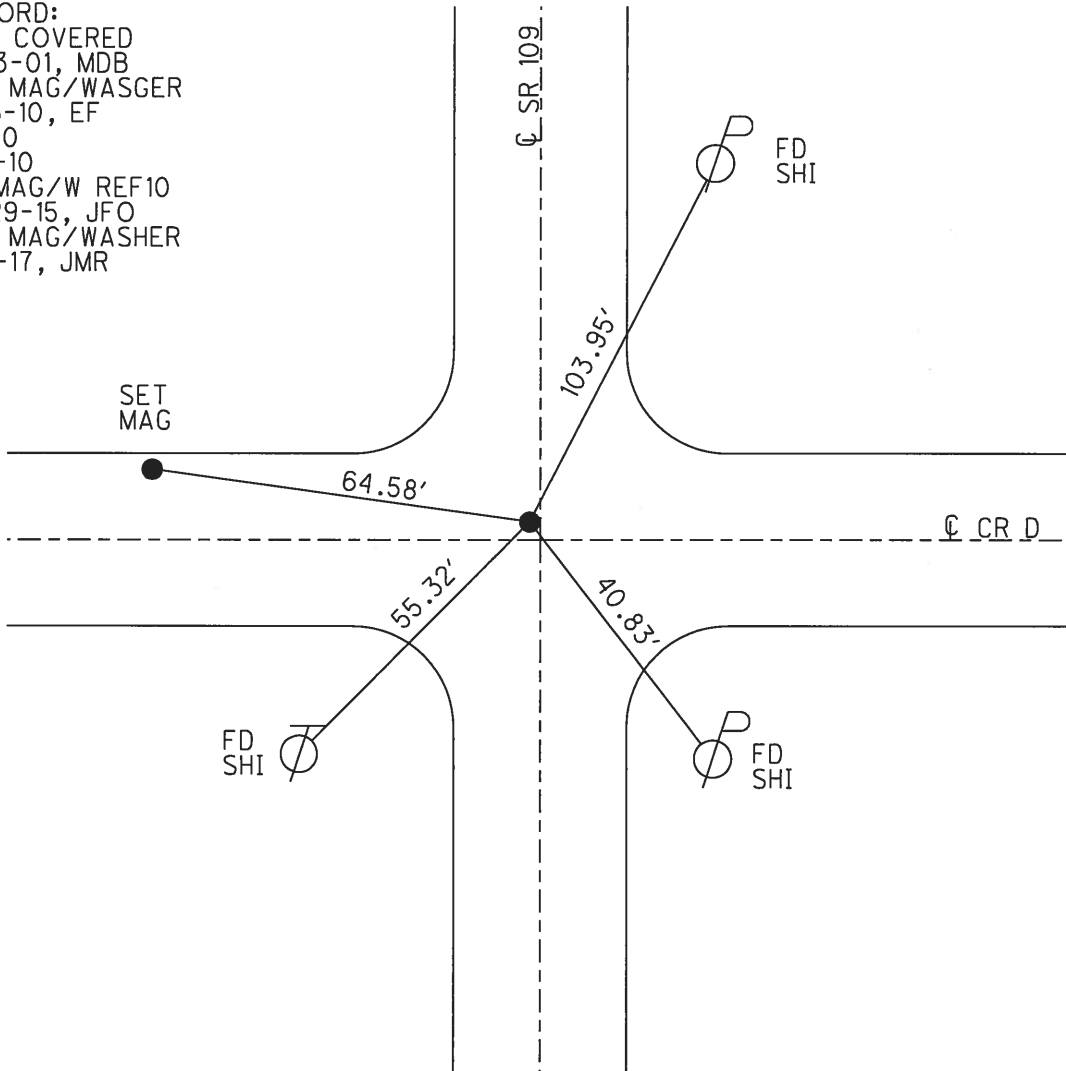
PERSONNEL \_\_\_\_\_ REFERENCE NO. 10 SHEET 13 OF 31  
 NOTES RHOADES DATE 7-26-17 ROUTE SR 109  
 H.C. O'DONNELL WEATHER SUNNY COUNTY FULTON  
 R.C. CARSON TEMP. 65° TOWNSHIP YORK  
 \_\_\_\_\_ SECTION 25  
 T 7 N R 7 E

TYPE MONUMENT MAG/WASHER  
 ON SURFACE - ~~BELOW~~ ON  
 LEFT - ☉ PAV'T - RIGHT ON  
10.8' TO RT EDGE PAVEMENT  
 S.L.M. 170+01.60



GRID: NORTHING: 682548.414 EASTING: 1556795.331

RECORD:  
 NOT COVERED  
 8-23-01, MDB  
 SET MAG/WASGER  
 9-16-10, EF  
 CP 10  
 7-8-10  
 FD MAG/W REF10  
 10-29-15, JFO  
 SET MAG/WASHER  
 12-1-17, JMR



O.D.O.T. DISTRICT 2 SURVEY OFFICE (USE ONLY)

PERSONNEL \_\_\_\_\_

REFERENCE NO. 10

SHEET 13 OF 14

NOTES HUSS

DATE 07-14-01

ROUTE SR 109

H.C. FINTEL

WEATHER SUNNY

COUNTY FULTON

R.C. CANTERBURY

TEMP. 87°

TOWNSHIP YORK

SECTION 25

T 7 N R 7 E

TYPE MONUMENT \_\_\_\_\_ MAG/WASHER \_\_\_\_\_

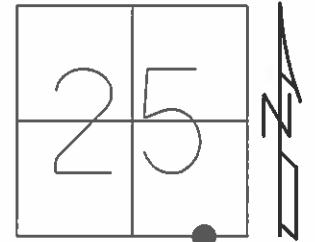
ON SURFACE - BELOW \_\_\_\_\_ ON \_\_\_\_\_

LEFT -  $\odot$  PAV'T - RIGHT \_\_\_\_\_ 0.2' \_\_\_\_\_

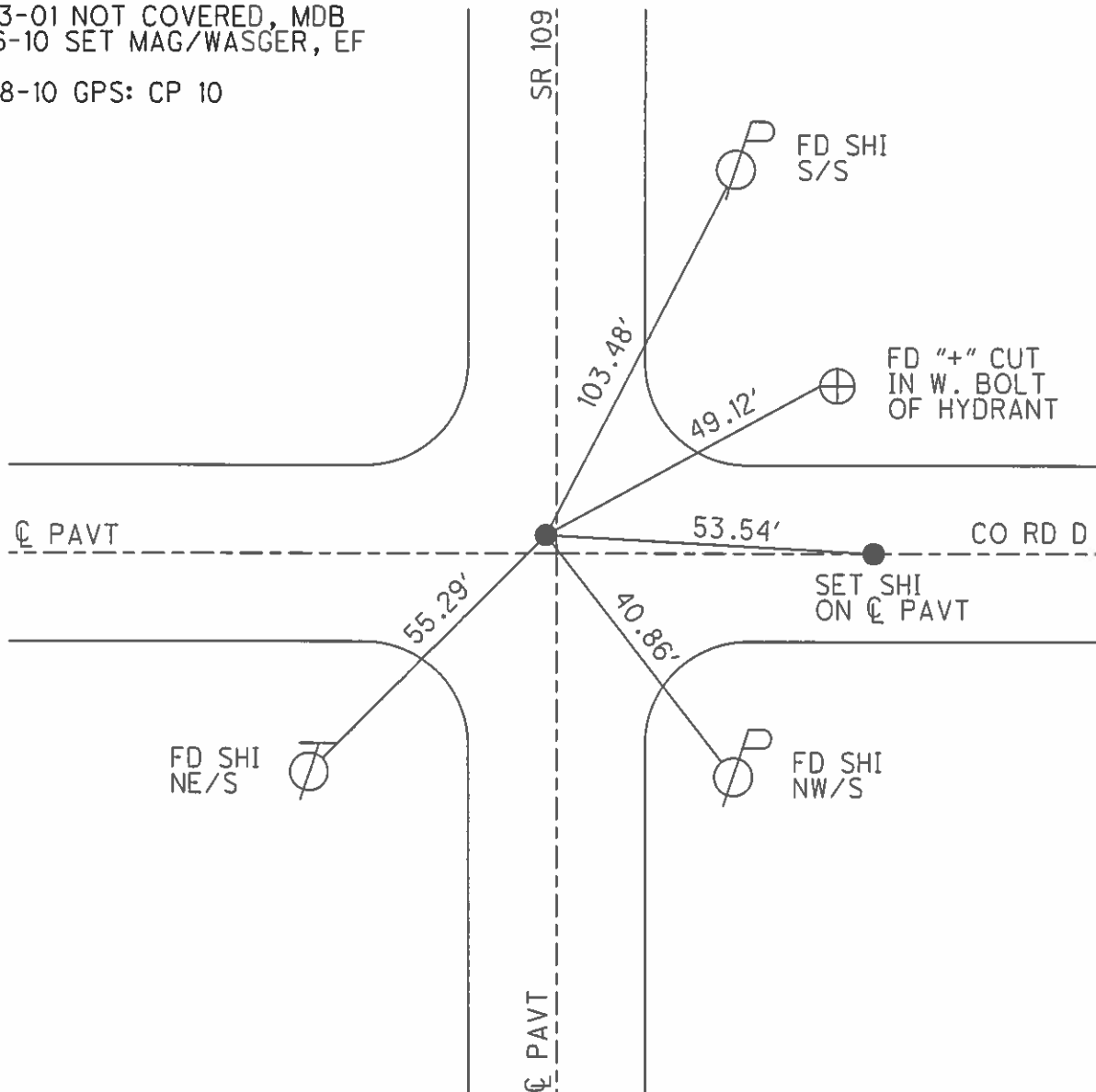
10.8' TO RT EDGE PAVEMENT

S.L.M. 170+00

Grid: Northing: 682548.414 Easting: 1556795.331



08-23-01 NOT COVERED, MDB  
 09-16-10 SET MAG/WASGER, EF  
 07-08-10 GPS: CP 10



# O.D.O.T. DISTRICT 2 SURVEY OFFICE

PERSONNEL \_\_\_\_\_

REFERENCE NO. 10

SHEET 1 OF 15

NOTES BARNHISEL RC

H.C. CORDES

DATE 7-6-01

ROUTE 109

R.C. \_\_\_\_\_

WEATHER SUNNY

COUNTY FULTON

TEMP. +75°

TOWNSHIP YORK

SECTION 25

T 7 N R 7 E

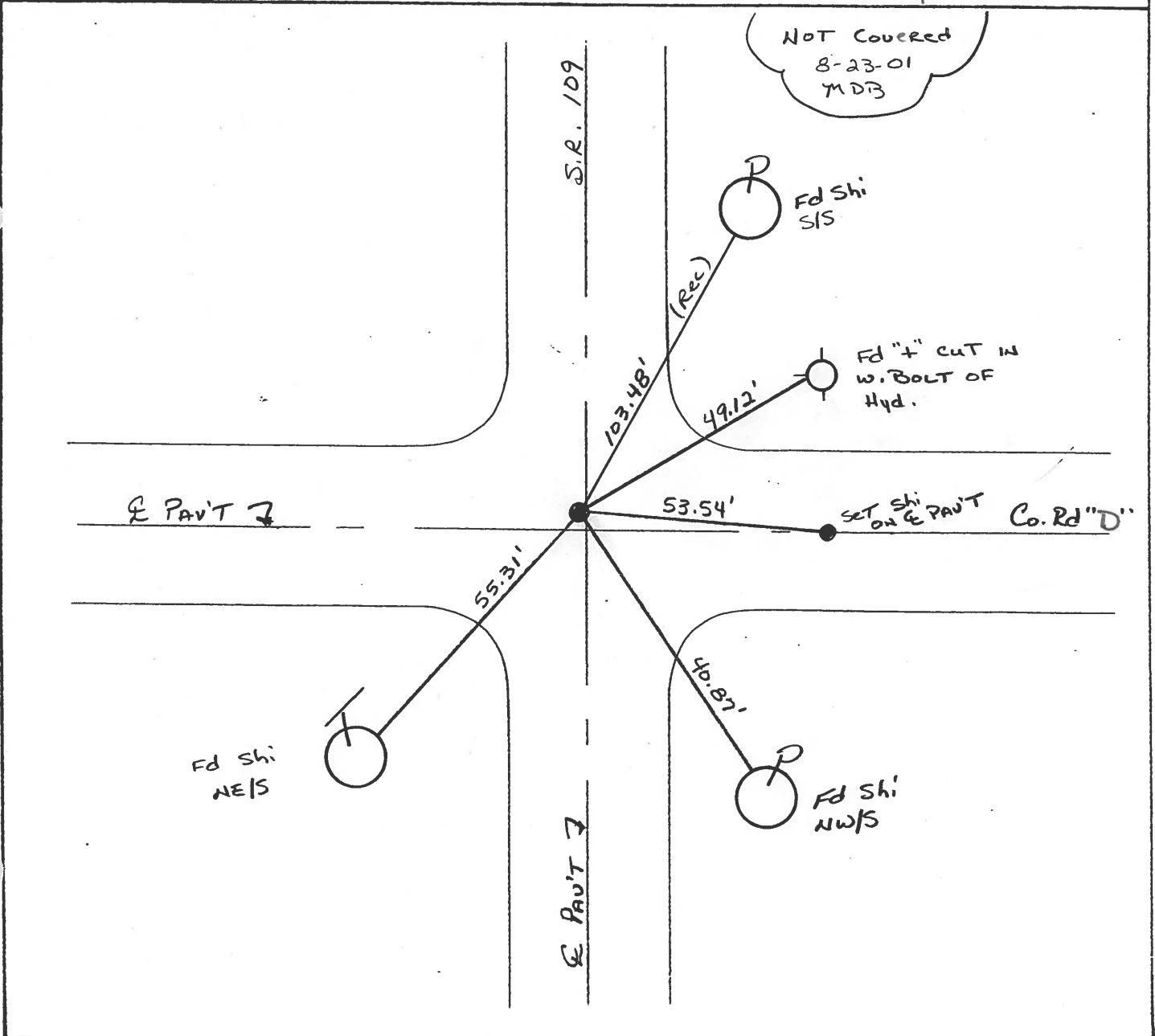
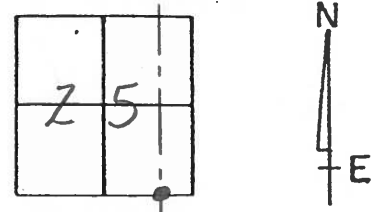
TYPE MONUMENT PK/WASHER

ON SURFACE - ~~BELOW~~ YES

LEFT- & PAV'T. - RIGHT 0.5'

10.8' TO RT EDGE PAVEMENT

S.L.M. 170+00 3.1' N. OF E PAV'T WEST



Resurfaced 2001

O.D.O.T. DISTRICT 2 SURVEY OFFICE

PERSONNEL

REFERENCE NO. 10

SHEET 11 OF 27

NOTES CORDES

H.C. HERMILLER

DATE 8-10-94

ROUTE 109

R.C. SLOVAK

WEATHER SUNNY

COUNTY FULTON

P CANTERBURY

TEMP. 65°F

TOWNSHIP YORK

SECTION 25

T 7 N R 7 E

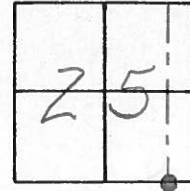
TYPE MONUMENT 1" IRON PIPE

ON SURFACE - BELOW 2 1/2"

~~LEFT - & PAV'T. - RIGHT~~ 3.3' N. & CO. RD. D

10.8' TO RT. EDGE PAVEMENT

S.L.M. 170+00



Fd 1" I. Pipe ON SURFACE  
5-24-82  
I. STONE

SET PK & WASHER  
10-13-94  
BVD

S.P. 109

Fd. SHI.

SET "4" CUT IN  
W. BOLT OF  
FIRE HYDRANT

E PAV'T

Co. Rd "D"

103.48 (REC)  
48.98

55.27

40.97

Fd. SHI.  
NE/S

SET SHI.  
NW/S

E PAV'T

County Fulton S.R. 109

Date 24 May 82

Township York

Weather Fair

Section 25

Temp. 70°

T   , R    E

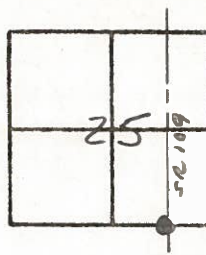
Personnel 1. Stone

P. Neuser

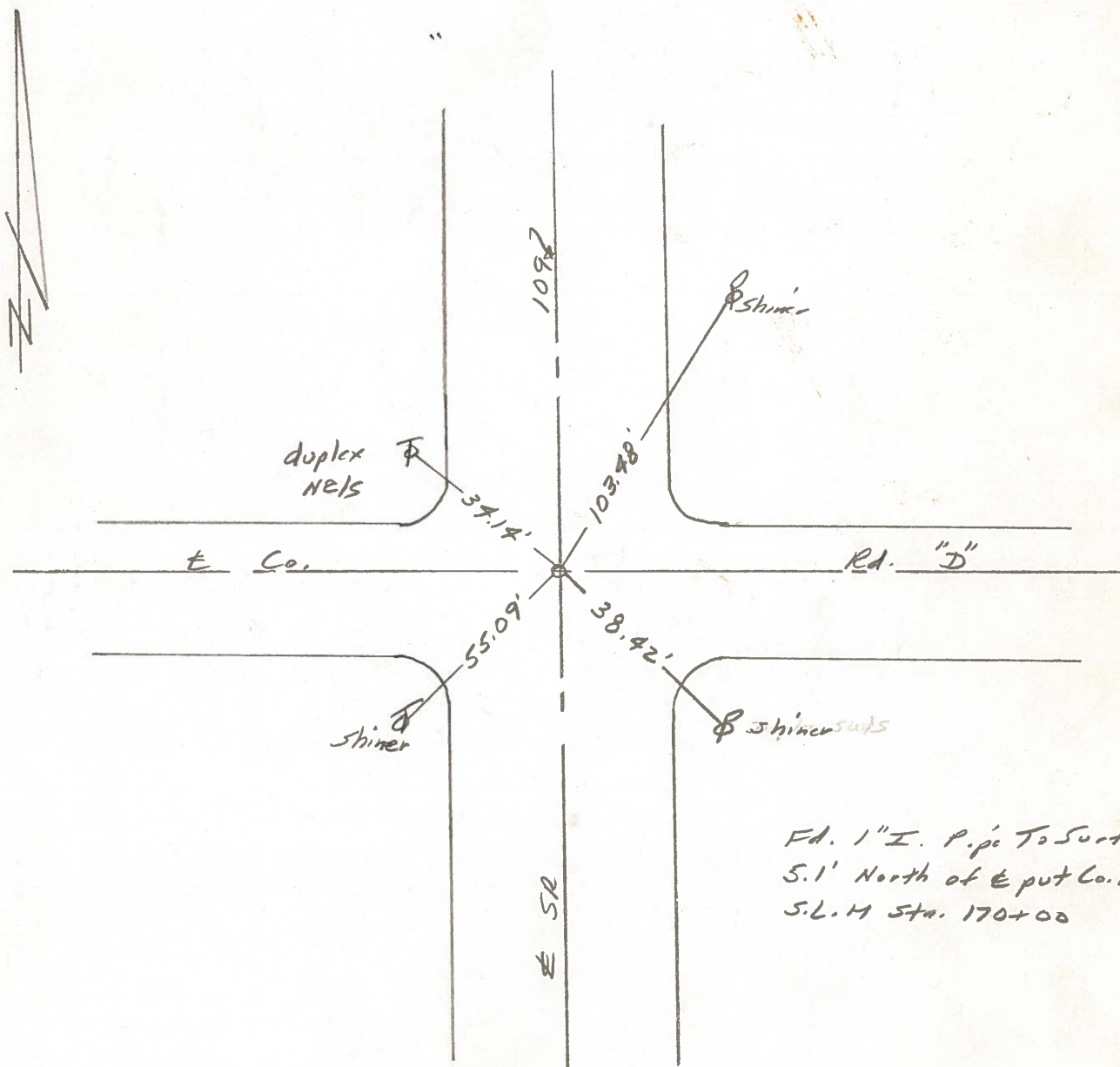
R. Michalek

D. Curtis

#10



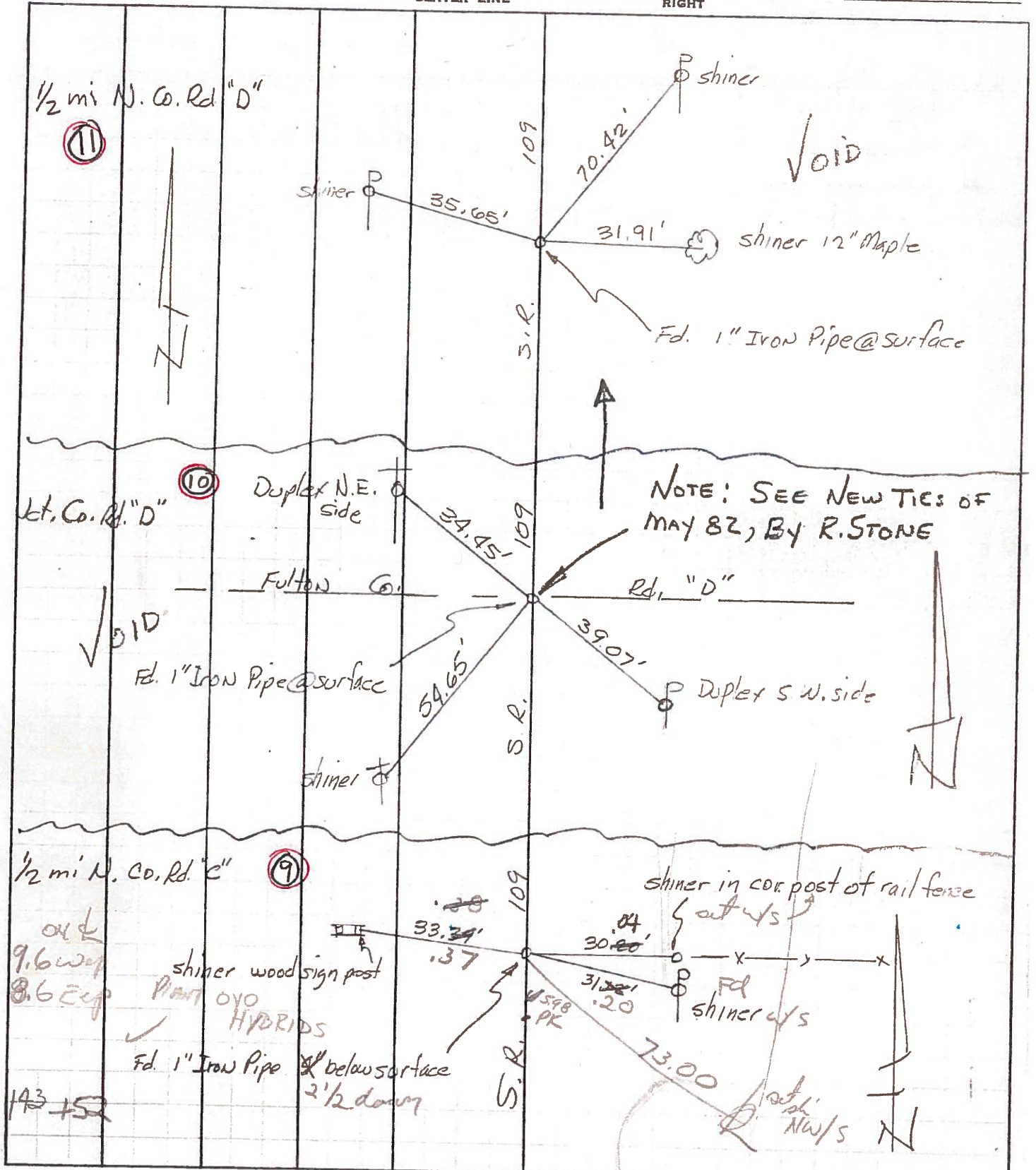
REF. NO. 10



Fd. 1" I. Pipe To Surface  
 5.1' North of E put Co. Rd. "D"  
 S.L.M Sta. 170+00

PERSONNEL	TITLE	PERSONNEL	TITLE	COUNTY	DATE	WEATHER	TEMP.
Tansig				Fulton	July 13, 1912		
Gianata				S. R. 109			
Vanyo				SEC. YORK TWP			
Boyle							

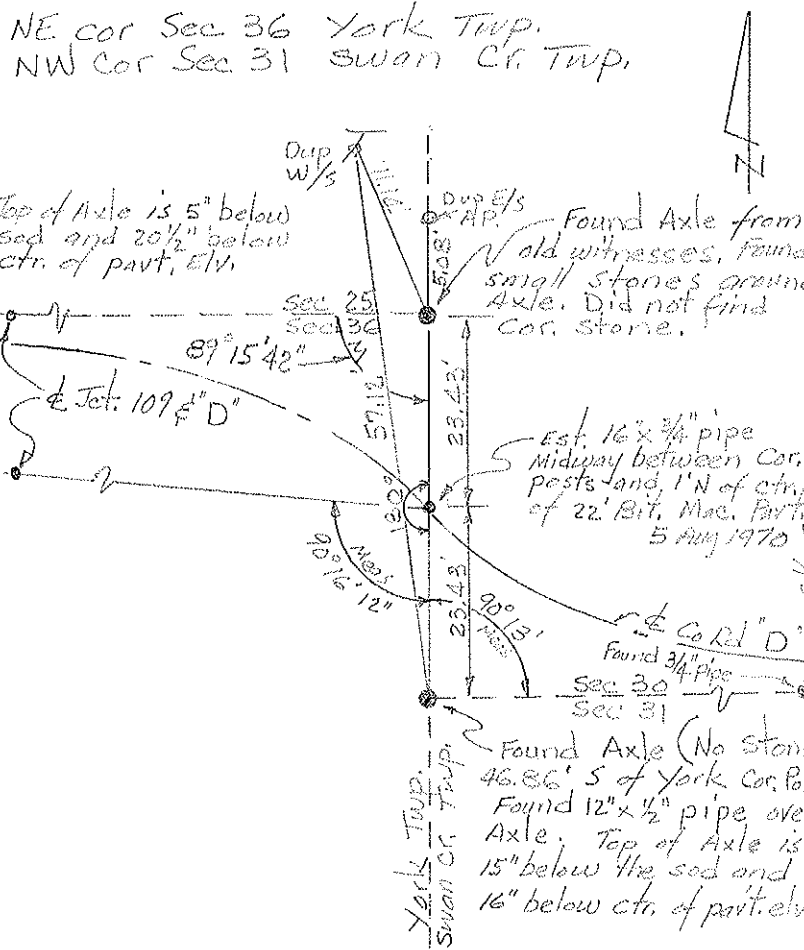
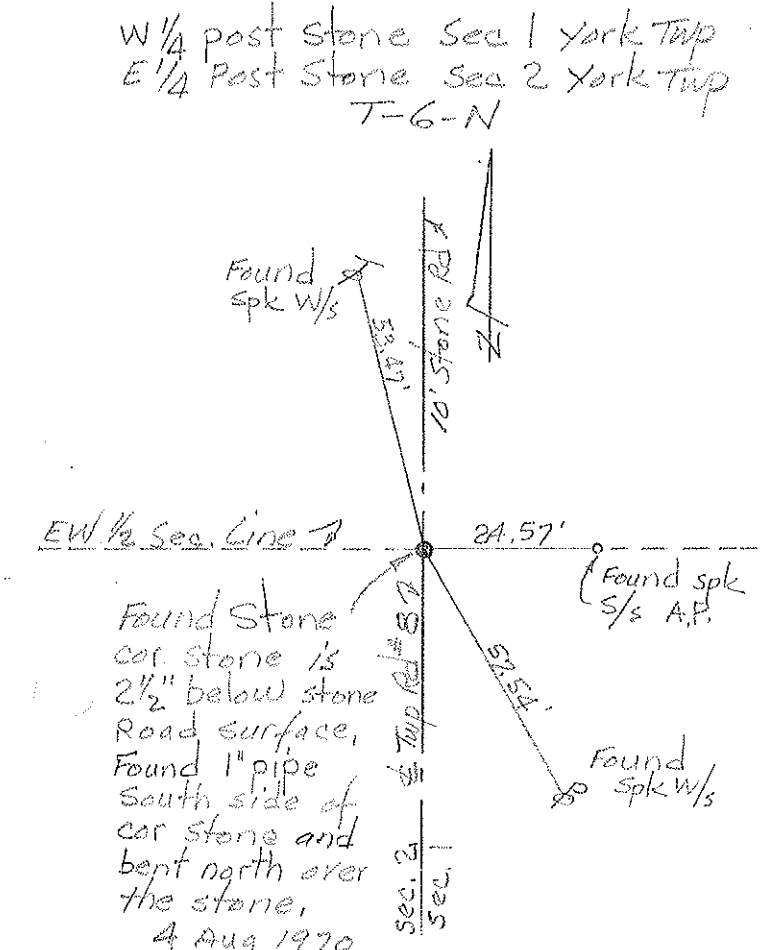
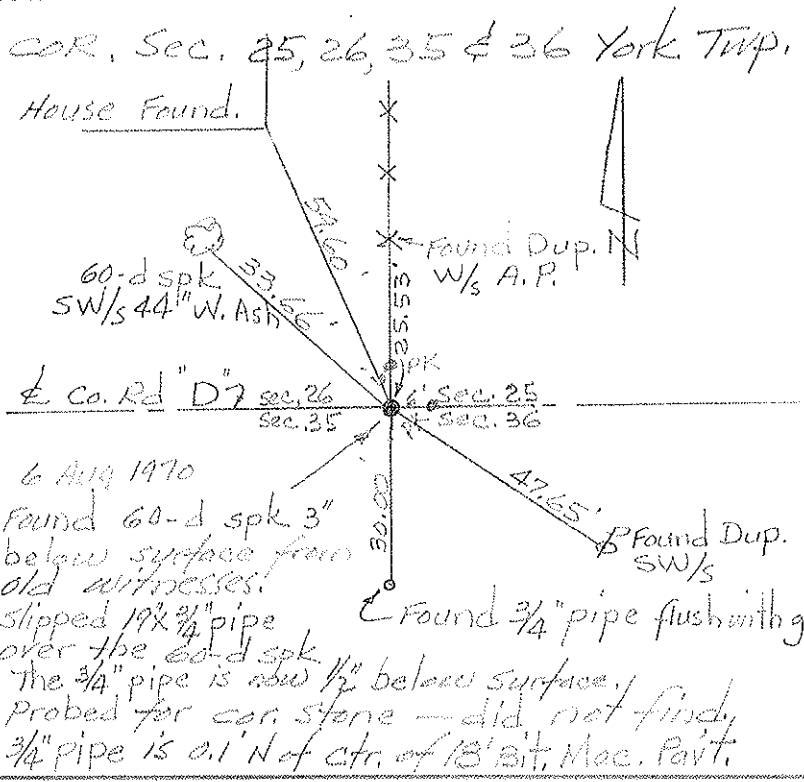
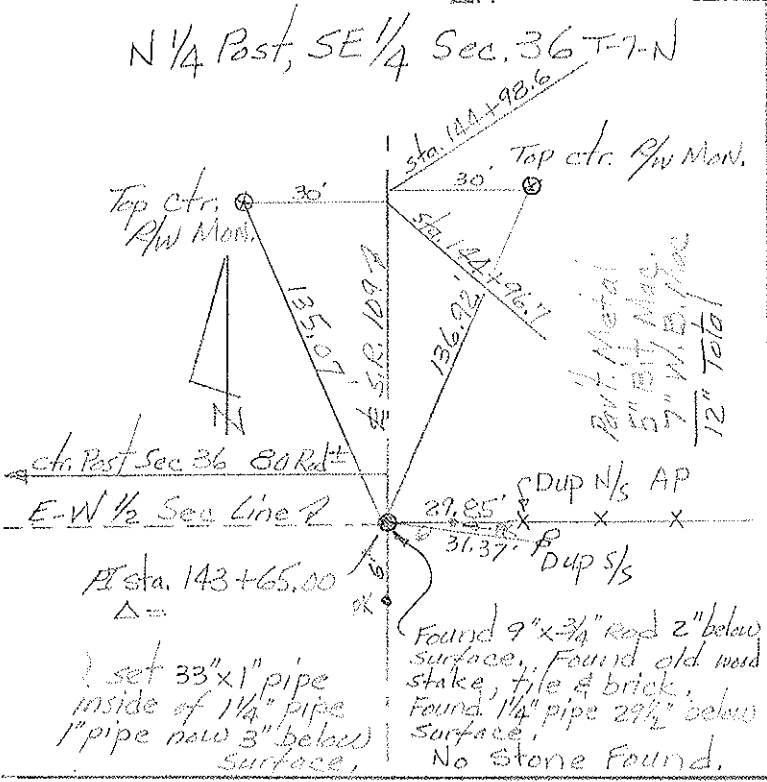
DESCRIPTION \_\_\_\_\_ LEFT \_\_\_\_\_ CENTER LINE \_\_\_\_\_ RIGHT \_\_\_\_\_ JOB NO. \_\_\_\_\_



PERSONNEL	TITLE	PERSONNEL	TITLE
Red Beach			
Newcomb			
Knape			
Wise			

COUNTY Fulton DATE Aug 1970  
 S. R. 109 WEATHER \_\_\_\_\_  
 SEC. York Twp TEMP. \_\_\_\_\_

DESCRIPTION CONTROL POINTS JOB NO. \_\_\_\_\_

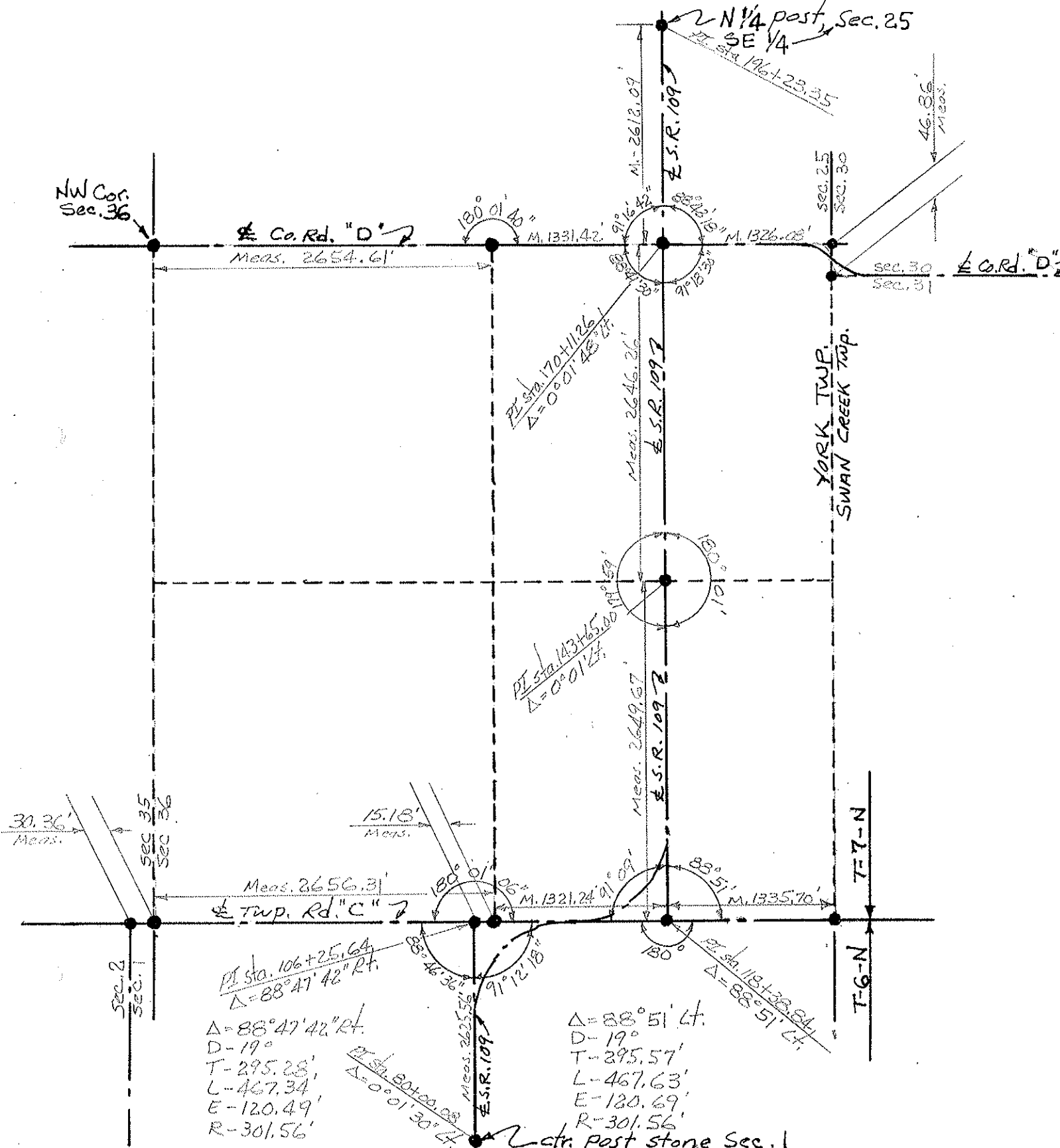








PERSONNEL	TITLE	PERSONNEL	TITLE	COUNTY	Fulton	DATE	Aug. 1970
Red Beach				S. R.	109	WEATHER	
Newcomb				SEC.	36, T-7-N, YORK TWP.	TEMP.	
Knape				DESCRIPTION	ALIGNMENT & CONTROLS	JOB NO.	
Wise							



$\Delta = 88^\circ 47' 42'' \text{ Rt.}$   
 $D = 19^\circ$   
 $T = 295.28'$   
 $L = 467.34'$   
 $E = 120.49'$   
 $R = 301.56'$

$\Delta = 88^\circ 51' \text{ Lt.}$   
 $D = 19^\circ$   
 $T = 295.57'$   
 $L = 467.63'$   
 $E = 120.69'$   
 $R = 301.56'$

Ctr. Post stone, Sec. 1