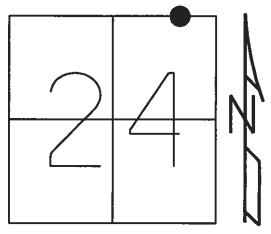


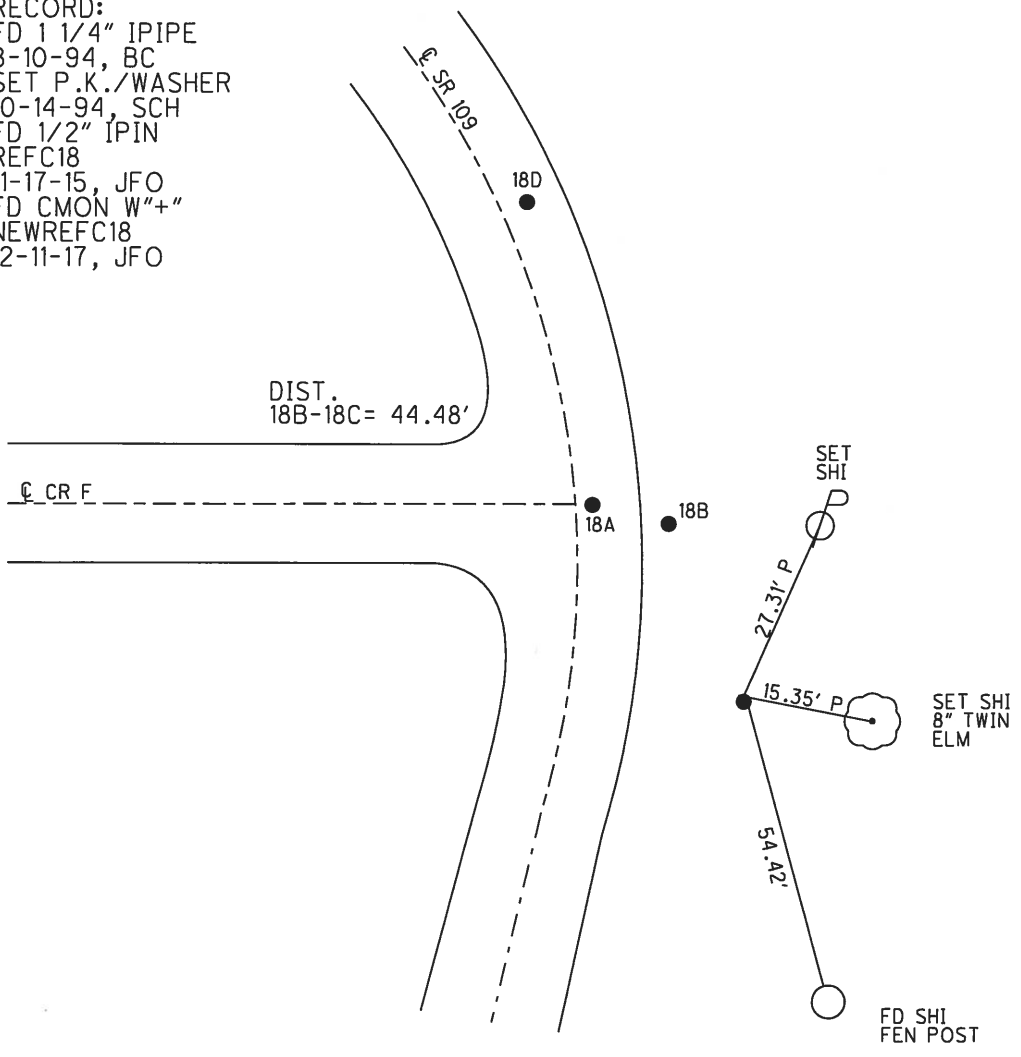
O.D.O.T. DISTRICT 2 SURVEY OFFICE (USE ONLY)

PERSONNEL _____ REFERENCE NO. 18 C SHEET 25 OF 31
 NOTES BARNHISEL DATE 7/6/01 ROUTE SR 109
 H.C. CORDES WEATHER SUNNY COUNTY FULTON
 R.C. BARNHISEL TEMP. 75° TOWNSHIP YORK
 _____ SECTION 24
 _____ T 7 N R 7 E

TYPE MONUMENT 1/2" IPIPE
~~ON SURFACE~~ - BELOW 3"
~~LEFT~~ - ☉ PAV'T - RIGHT 20.8'
10.3' TO RT EDGE PAVEMENT
 S.L.M. 280+14.10
 GRID: NORTHING: 693104.7153 EASTING: 1557653.0178



RECORD:
 FD 1 1/4" IPIPE
 8-10-94, BC
 SET P.K./WASHER
 10-14-94, SCH
 FD 1/2" IPIN
 REFC18
 11-17-15, JFO
 FD CMON W" "+"
 NEWREFC18
 12-11-17, JFO



O.D.O.T. DISTRICT 2 SURVEY OFFICE

PERSONNEL

NOTES BARNHISEL RC

H.C. CORDES

R.C. _____

REFERENCE NO. 18-B, 18-C, 18, 18-A SHEET 11 OF 15
C, B, A, D

DATE 7-6-01

WEATHER Sunny

TEMP. +75°

ROUTE 109

COUNTY FULTON

TOWNSHIP YORK

SECTION 24

T 7 N R 7 E

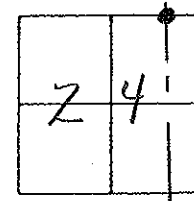
TYPE MONUMENT See Below

ON SURFACE - BELOW See Below

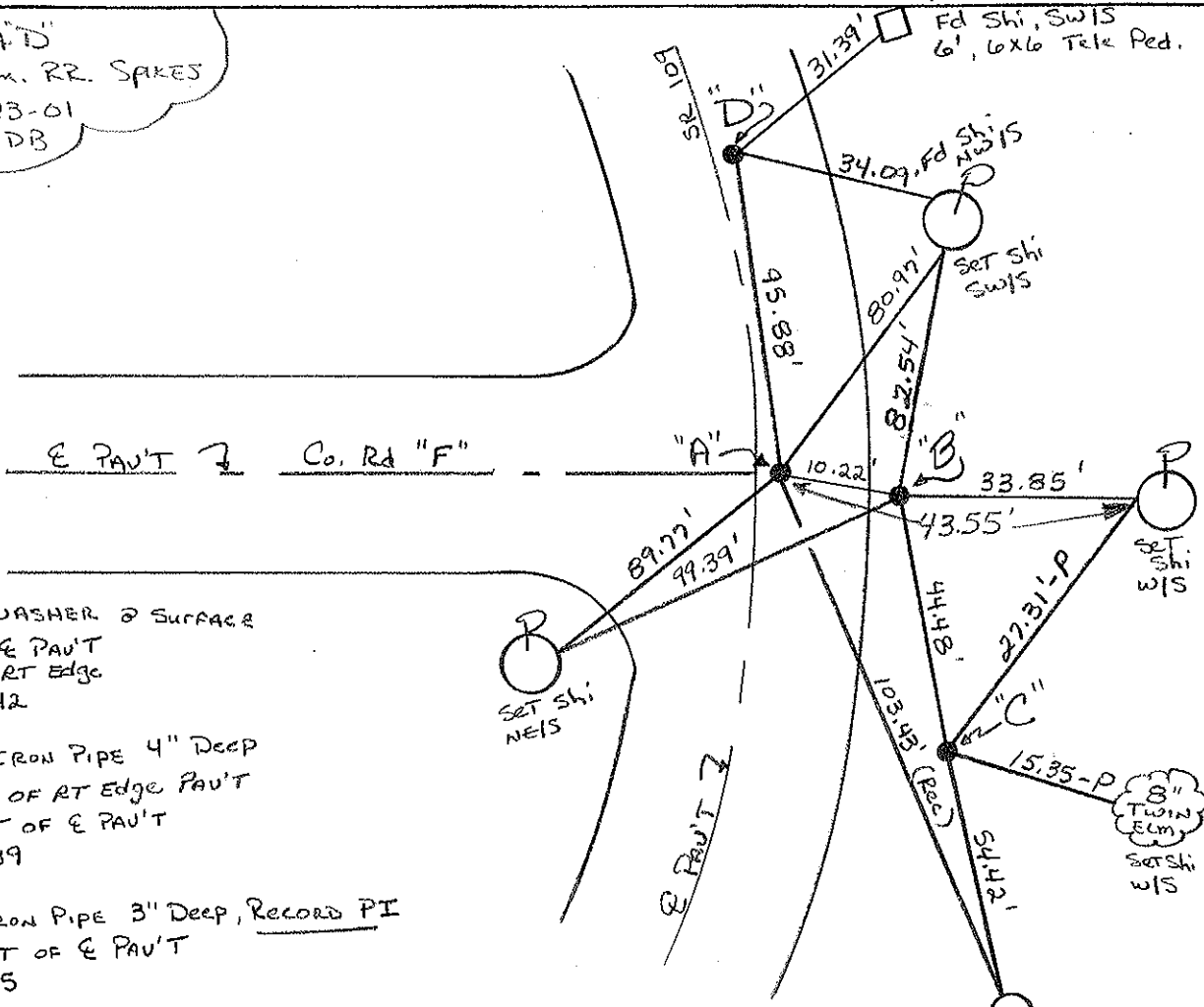
LEFT - & PAU'T. - RIGHT See Below

— TO — EDGE PAVEMENT

S.L.M. See Below



PT "A" & "D"
 RESET SM. RR. SPKES
 8-23-01
 MDB



- "A" = Fd PKWASHER @ SURFACE
 2.3' RT & PAU'T
 9.0' TO RT EDGE
 280+42
- "B" = Fd 3/4" IRON PIPE 4" DEEP
 0.7' RT OF RT EDGE PAU'T
 11.9' RT OF & PAU'T
 280+39
- "C" = Fd 1/2" IRON PIPE 3" DEEP, RECORD PI
 20.8' RT OF & PAU'T
 279+95
- "D" = Fd PKWASHER @ SURFACE, RECORD PT
 1.9' RT OF & PAU'T
 8.6' TO RT EDGE PAU'T
 281+36

O.D.O.T. DISTRICT 2 SURVEY OFFICE

PERSONNEL

REFERENCE NO. 17-B/18/19 SHEET 21 OF 27

NOTES CORDES

H.C. CANTERBURY

R.C. HERMILLER

SIOUAK P

DATE 8-10-94

WEATHER SUNNY

TEMP. +75° F

ROUTE 109

COUNTY Fulton

TOWNSHIP Troy

SECTION 24

T 7 N R 7 E

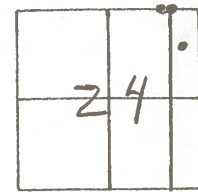
TYPE MONUMENT SEE BELOW

ON SURFACE - BELOW SEE BELOW

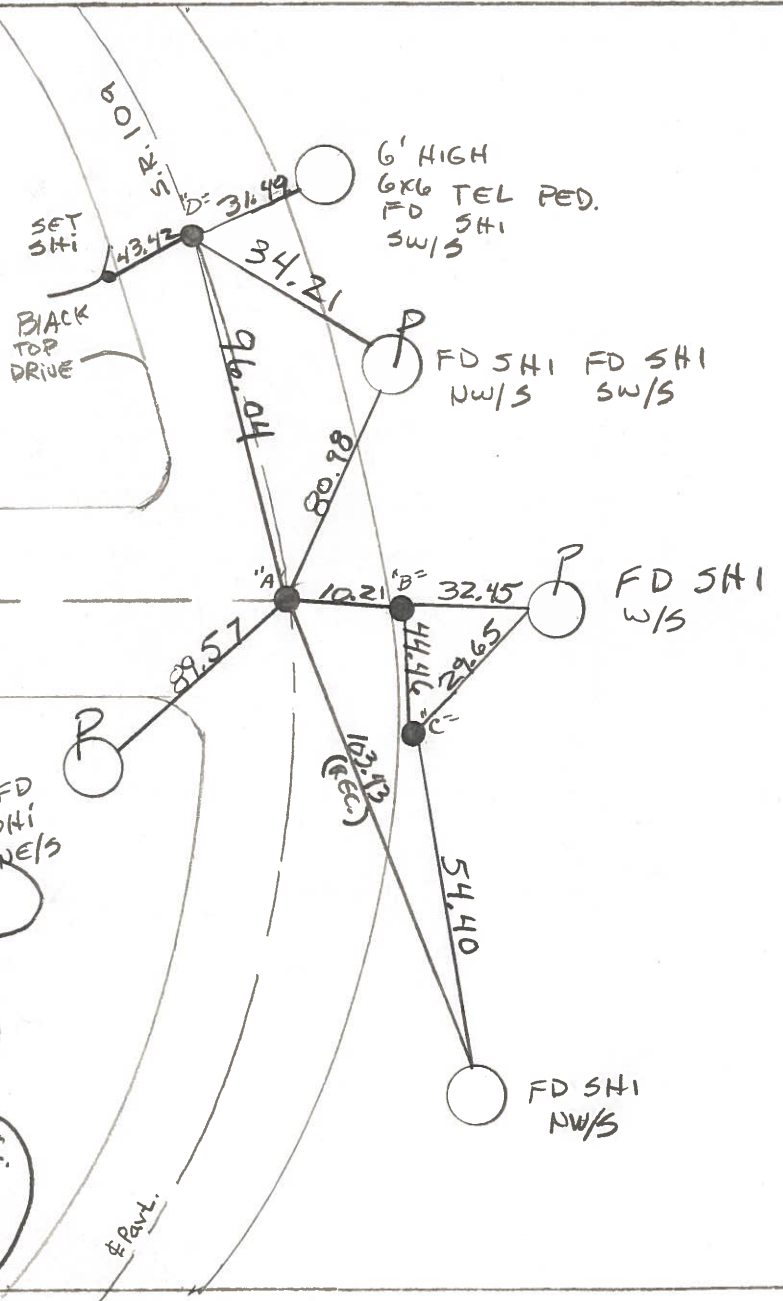
LEFT- & PAV'T. - RIGHT SEE BELOW

TO EDGE PAVEMENT

S.L.M. SEE BELOW



SET PK & WASHER
AT ALL POINTS
10-14-94
SCH



E Pavt. Co. Rd. *F*

"A" = FD RR SPRIKE 1 1/2" DEEP DAMAGED
1.2 RT &
10.3 RT. EDGE
280+42

"B" = FD 3/4" IRON PIPE 2" DEEP
0.8 to RT. EDGE
10.9 RT of E
280+39

"C" = FD. 1 1/2" IRON PIPE 2" DEEP RECORD P.I.
20.8 RT &
279+95

"D" = FD PK NAIL 1 1/2" DEEP RECORD P.T.
1.7 RT &, 9.7 RT EDGE
281+36

County Fulton S.R. 109

Date 25 May 82

Township Troy

Weather Cool

Section 24

Temp. 60°

T N, R E

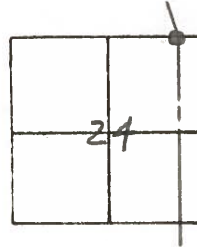
Personnel I. Stone

P. Neuser

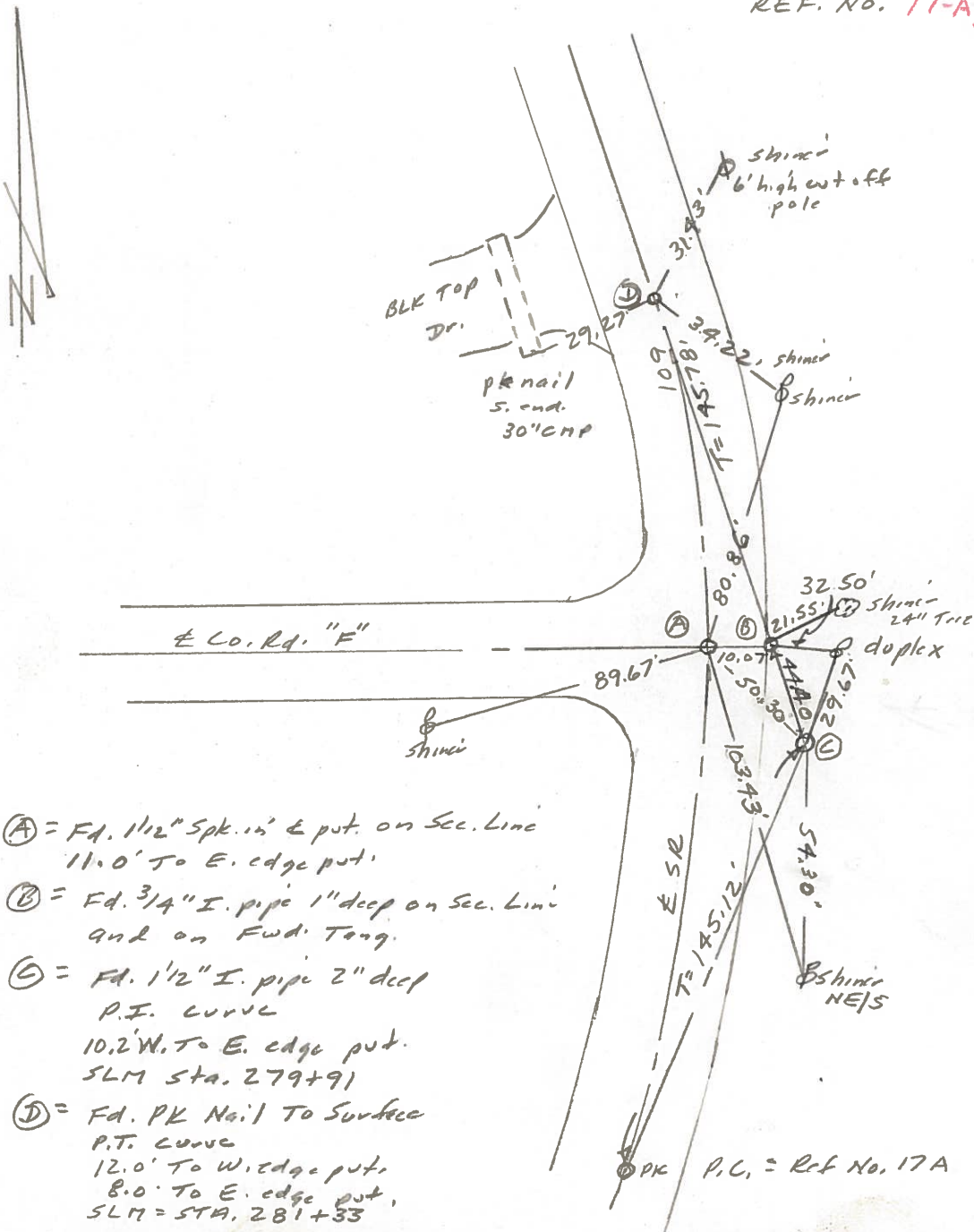
R. Michalak

J. Curtis

#17-A, 18
#19

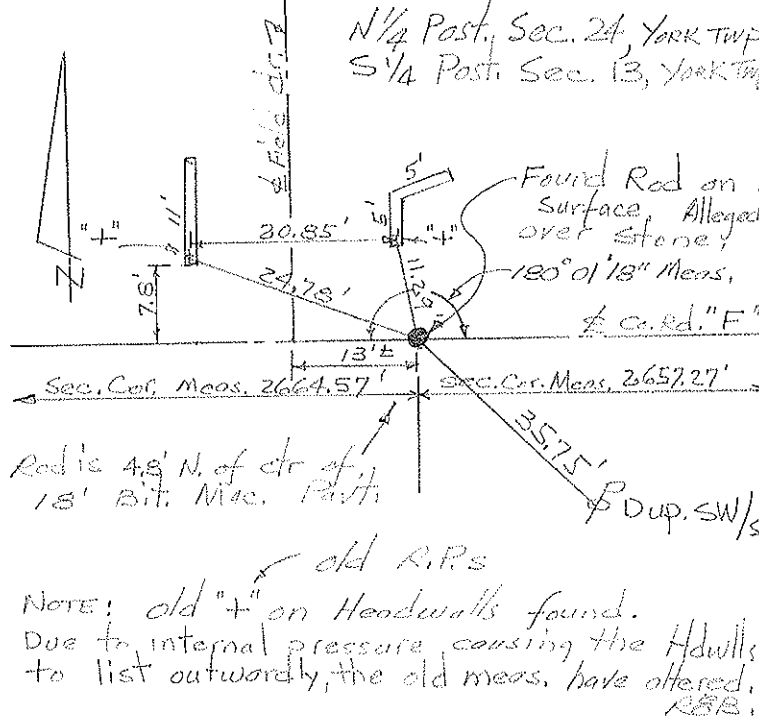
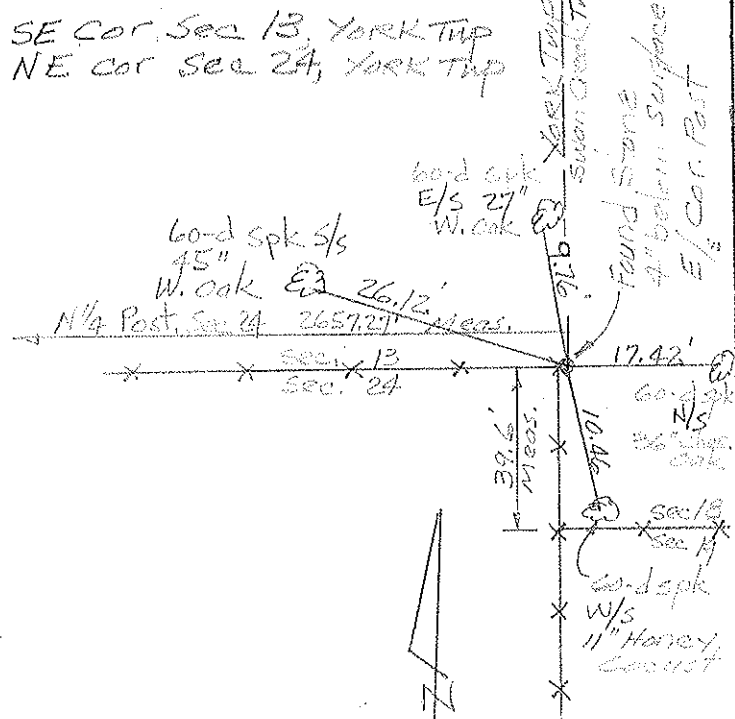


REF. NO. 17-A, 18, 19

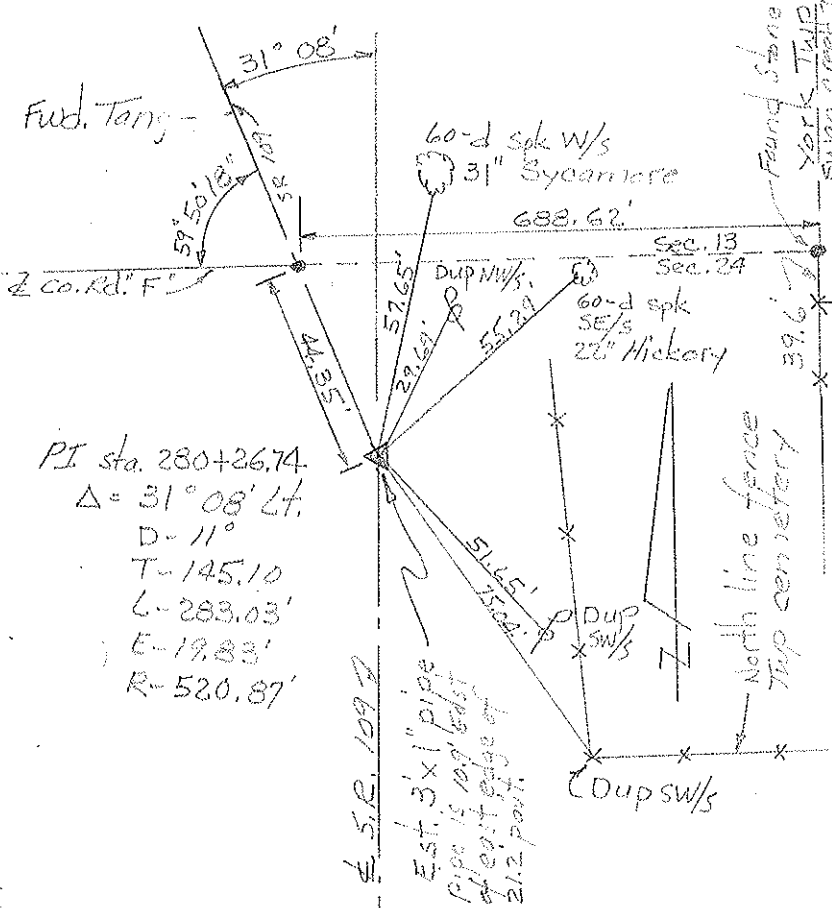


PERSONNEL	TITLE	PERSONNEL	TITLE	COUNTY	DATE
Red Beach				Fulton	Aug 1970
Newcomb				S. R. 109	WEATHER
Knape				SEC. YORK TWP	TEMP.
Wise					

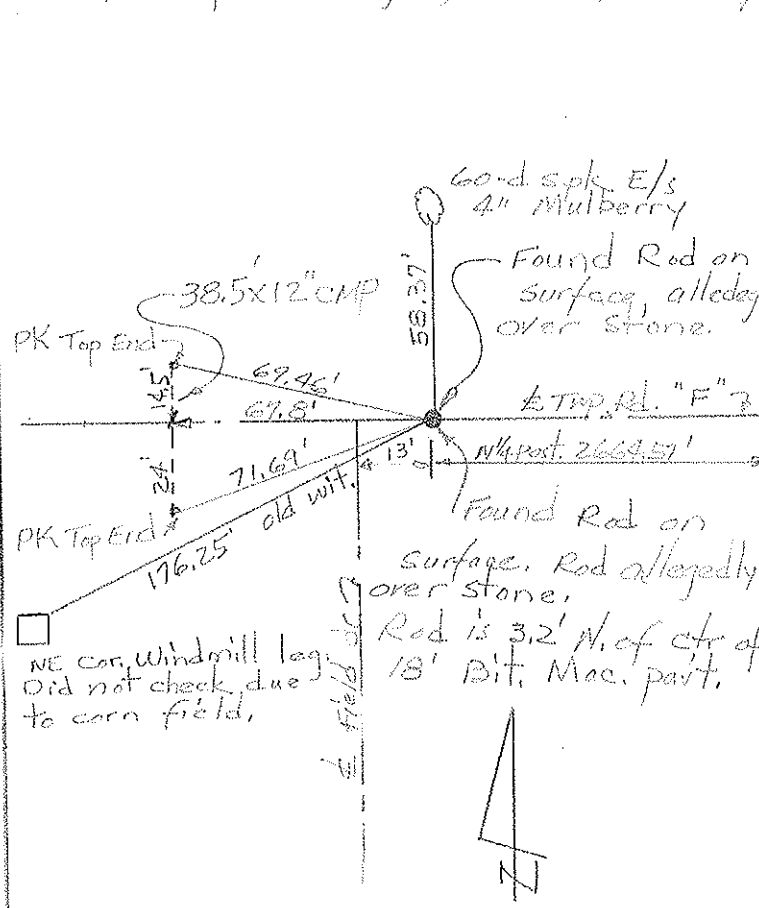
DESCRIPTION CONTROL POINTS JOB NO.



P.I. Sta. 280+26.65 $\Delta = 31^\circ 08' \text{ Lt.}$



Sec. Cor., Sec. 13, 14, 23 & 24 York Twp.



PERSONNEL	TITLE	PERSONNEL	TITLE	COUNTY	DATE
Red Beach				FULTON	Sept. 1970
Newcomb				S. R. 109	WEATHER
Knape				SEC NE 1/4 Sec. 24, YORK TWP	TEMP.
Wise					

DESCRIPTION **ALIGNMENT & CONTROLS** LEFT CENTER LINE RIGHT JOB NO.

