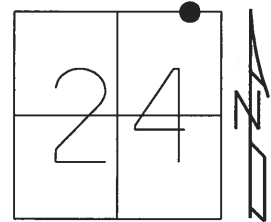


O.D.O.T. DISTRICT 2 SURVEY OFFICE (USE ONLY)

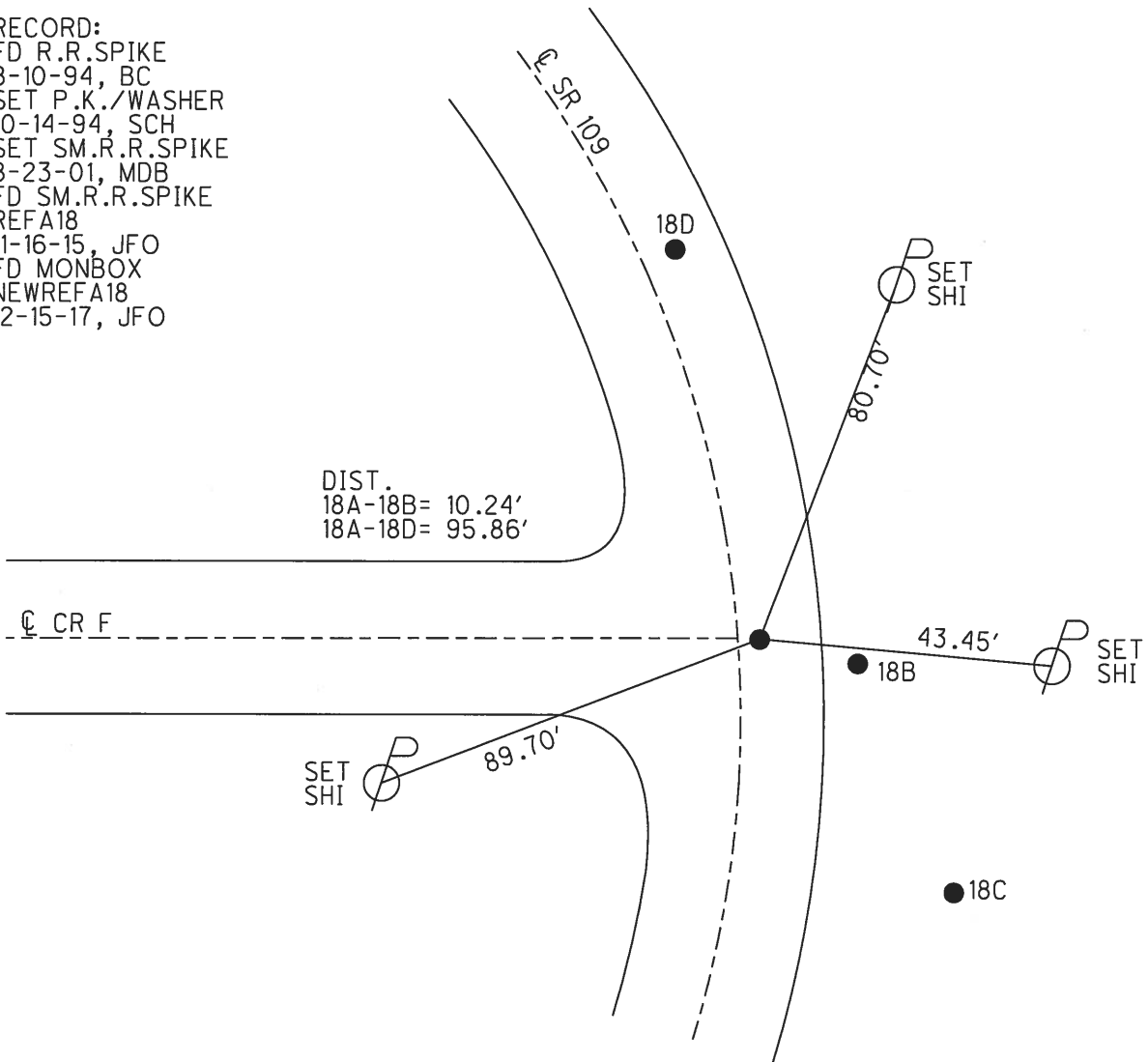
PERSONNEL _____ REFERENCE NO. 18 A SHEET 23 OF 31
 NOTES RHOADES DATE 7-26-17 ROUTE SR 109
 H.C. O'DONNELL WEATHER SUNNY COUNTY FULTON
 R.C. CARSON TEMP. 67° TOWNSHIP YORK
 _____ SECTION 24
 _____ T 7 N R 7 E

TYPE MONUMENT P.K./WASHER
 ON SURFACE - ~~BELOW~~ ON _____
~~LEFT~~ - CL PAV'T - RIGHT 2.3'
9.0' TO RT EDGE PAVEMENT
 S.L.M. 280+58.07



GRID: NORTHING: 693142.5463 EASTING: 1557621.7573

RECORD:
 FD R.R.SPIKE
 8-10-94, BC
 SET P.K./WASHER
 10-14-94, SCH
 SET SM.R.R.SPIKE
 8-23-01, MDB
 FD SM.R.R.SPIKE
 REFA18
 11-16-15, JFO
 FD MONBOX
 NEWREFA18
 12-15-17, JFO



O.D.O.T. DISTRICT 2 SURVEY OFFICE

PERSONNEL

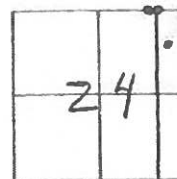
REFERENCE NO. 17-B/18/19 SHEET 21 OF 27

NOTES CORDES
 H.C. CANTERBURY
 R.C. HERMILLER
SIQUAK P

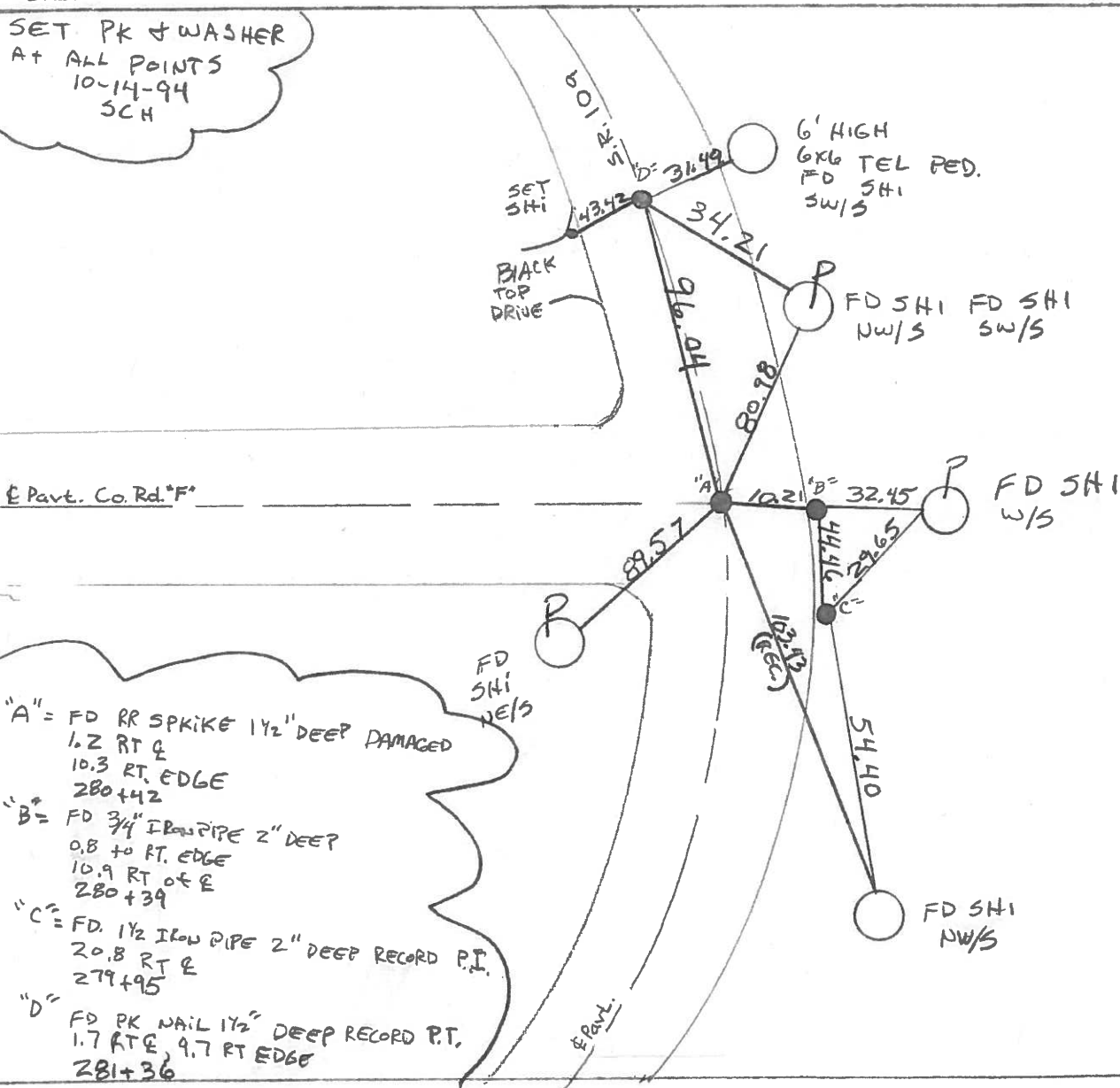
DATE 8-10-94
 WEATHER SUNNY
 TEMP. 75° F

ROUTE 109
 COUNTY Fulton
 TOWNSHIP Troy
 SECTION 24
T 7 N R 7 E

TYPE MONUMENT SEE BELOW
 ON SURFACE - BELOW SEE BELOW
 LEFT- & PAV'T. - RIGHT SEE BELOW
 TO EDGE PAVEMENT
 S.L.M. SEE BELOW



SET PK & WASHER
 AT ALL POINTS
 10-14-94
 SCH



"A" = FD RR SPRIKE 1 1/2" DEEP DAMAGED
 1.2 RT &
 10.3 RT. EDGE
 280+42

"B" = FD 3/4" IRON PIPE 2" DEEP
 0.8 to RT. EDGE
 10.9 RT of E
 280+39

"C" = FD 1 1/2" IRON PIPE 2" DEEP RECORD P.I.
 20.8 RT &
 279+95

"D" = FD PK NAIL 1 1/2" DEEP RECORD P.T.
 1.7 RT & 9.7 RT EDGE
 281+36

County Fulton S.R. 109

Date 25 May 82

Township Troy

Weather Cool

Section 24

Temp. 60°

T N, R E

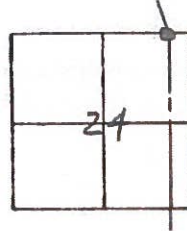
Personnel I. Stone

P. Neuser

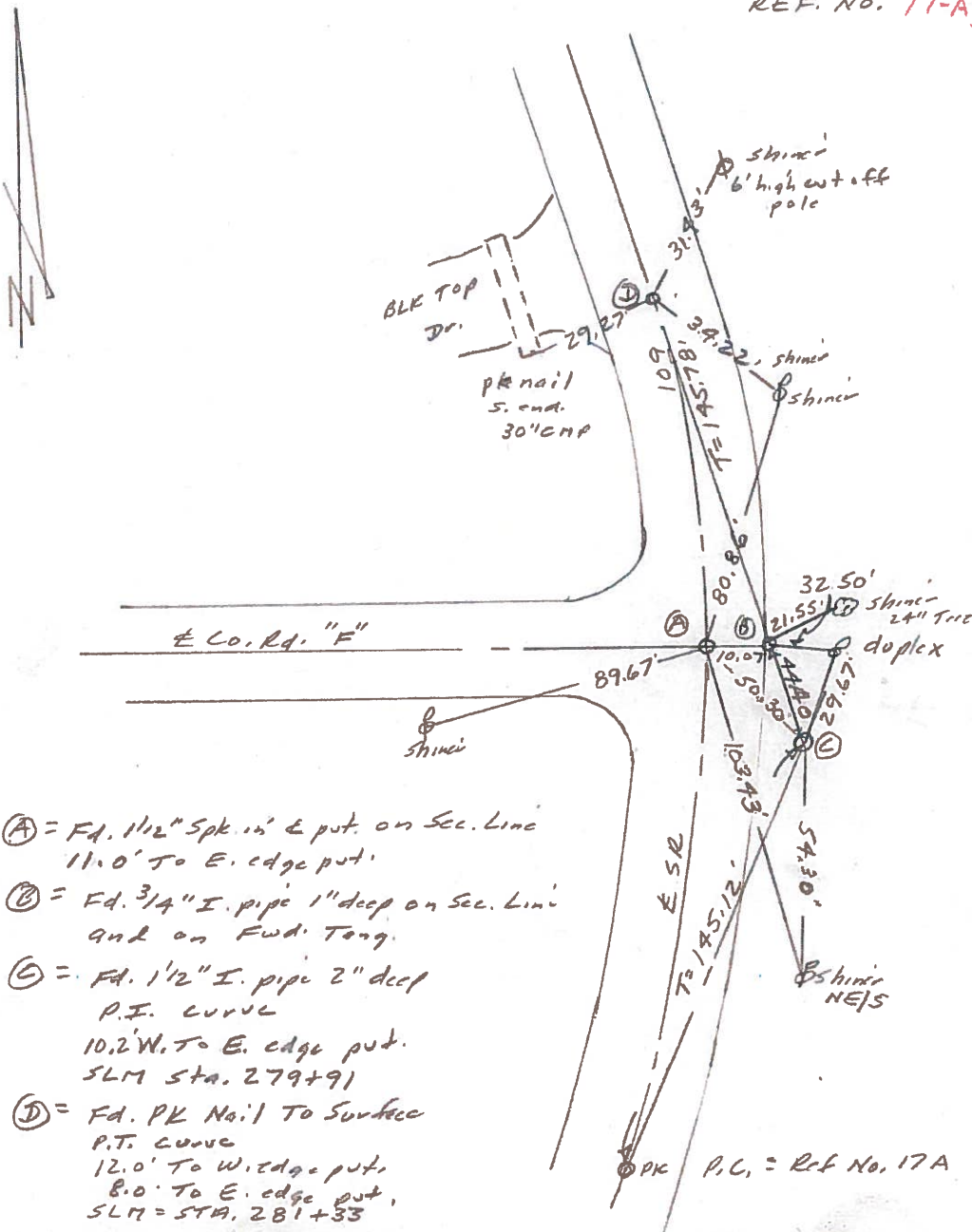
R. Michalale

J. Curtis

#17-A, 18
E 19



REF. No. 17-A, 18, 19



(A) = Fd. 1 1/2" Spk. in' & put. on Sec. Line
11.0' To E. edge put.

(B) = Fd. 3/4" I. pipe 1" deep on Sec. Line
and on Fwd. Tang.

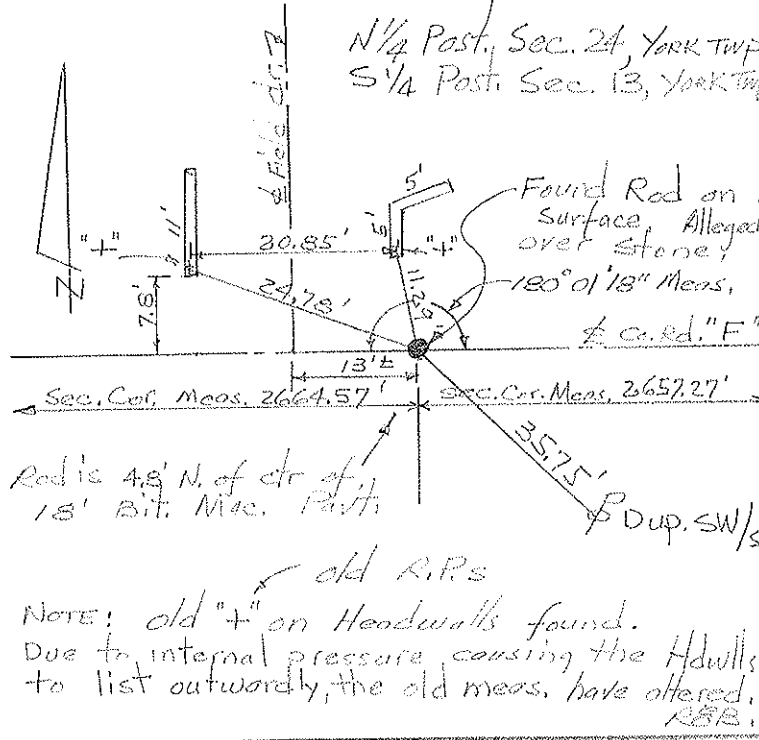
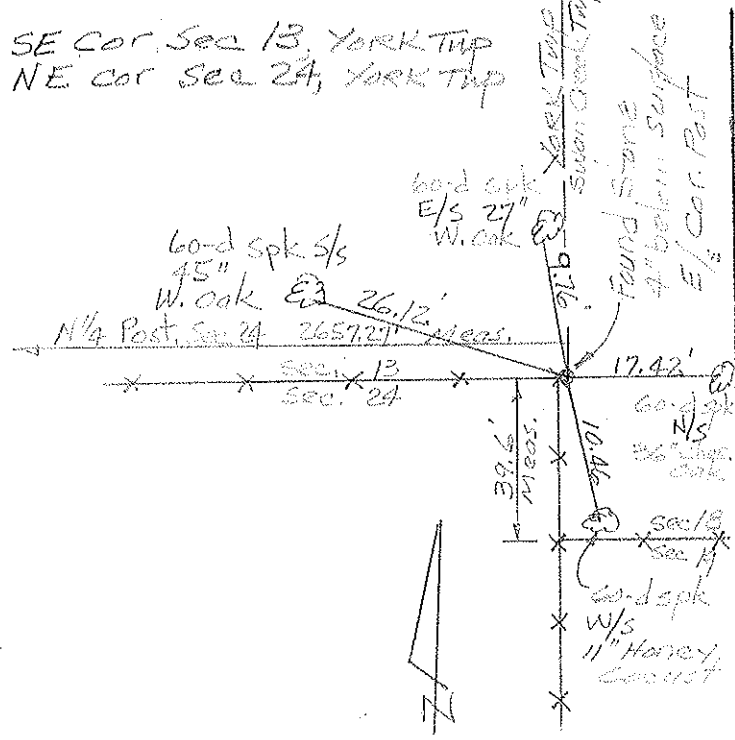
(C) = Fd. 1 1/2" I. pipe 2" deep
P.T. Curve
10.2' W. To E. edge put.
SLM Sta. 279+91

(D) = Fd. PK Nail To Surface
P.T. Curve
12.0' To W. edge put.
8.0' To E. edge put.
SLM = STA. 281+33

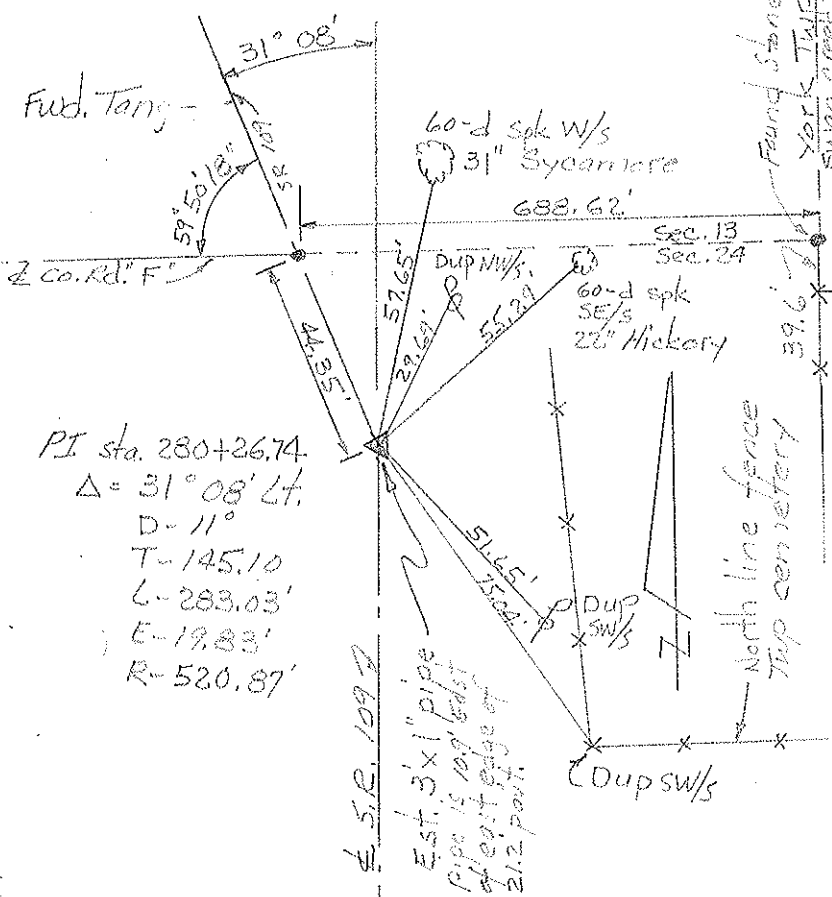
PK P.C. = Ref No. 17A

PERSONNEL	TITLE	PERSONNEL	TITLE	COUNTY	DATE
Red Beach				Fulton	Aug 1970
Newcomb					
Knape				S. R. 109	WEATHER
Wise				SEC. YORK TWP	TEMP.

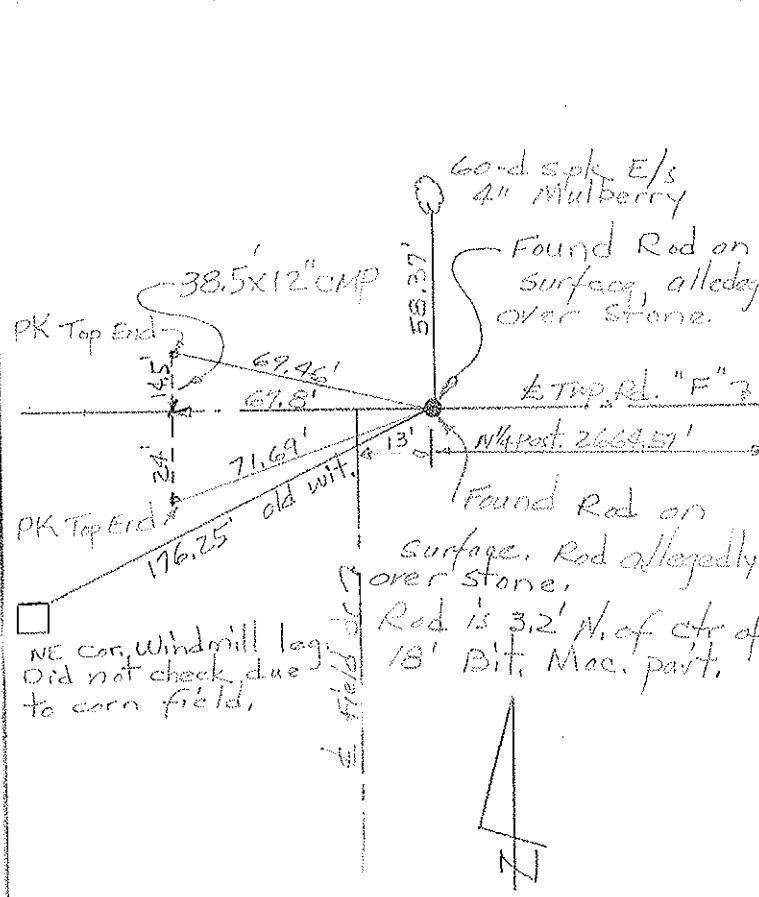
DESCRIPTION CONTROL POINTS JOB NO.



P.I. Sta. 280+26.65 Δ = 31° 08' Lt.



Sec. Cor., Sec. 13, 14, 23 & 24 York Twp.



PERSONNEL	TITLE	PERSONNEL	TITLE	COUNTY	DATE
Red Beach				FULTON	Sept. 1970
Newcomb				S. R. 109	WEATHER
Knape				SEC NE 1/4 Sec. 24, YORK TWP	TEMP.
Wise					

DESCRIPTION **ALIGNMENT & CONTROLS** JOB NO.

