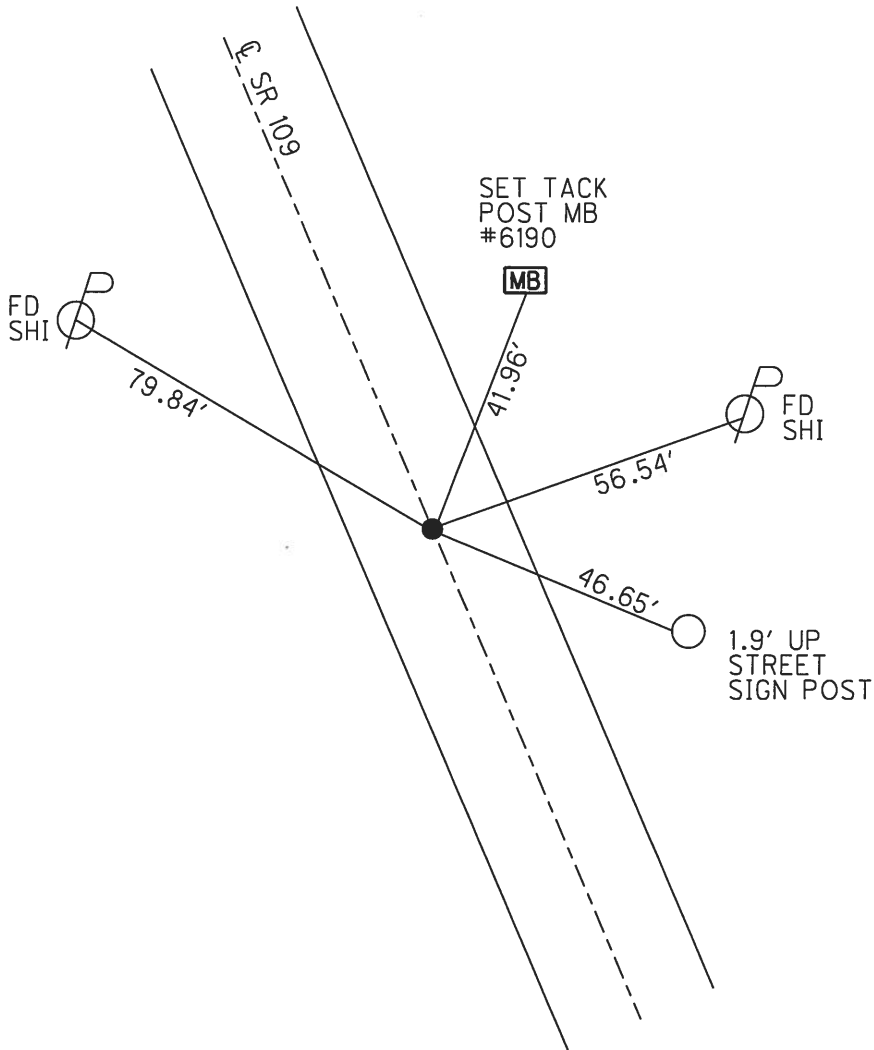
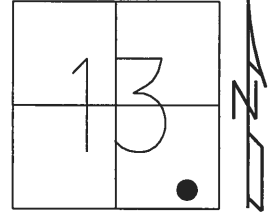


O.D.O.T. DISTRICT 2 SURVEY OFFICE (USE ONLY)

PERSONNEL _____ REFERENCE NO. 19 SHEET 27 OF 31
 NOTES RHOADES DATE 7-26-17 ROUTE SR 109
 H.C. O'DONNELL WEATHER SUNNY COUNTY FULTON
 R.C. CARSON TEMP. 73° TOWNSHIP YORK
 _____ SECTION 13
 _____ T 7 N R 7 E

TYPE MONUMENT SM.R.R.SPIKE
 ON SURFACE - ~~BELOW~~ ON _____
 LEFT - ☉ PAV'T - RIGHT ON _____
10.9' TO LT EDGE PAVEMENT
 S.L.M. 290+27.16
 GRID: NORTHING: 693979.8122 EASTING: 1557133.3257



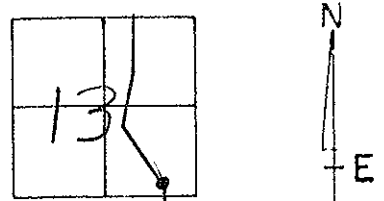
RECORD:
 ORIGIN UNKNOWN
 SET SM.R.R.SPIKE
 8-23-01, MDB
 FD SM.R.R.SPIKE
 10-29-15, JFO
 REF19
 12-18-15, JFO
 SET MAG/WASHER
 12-1-17, JMR

O.D.O.T. DISTRICT 2 SURVEY OFFICE

PERSONNEL _____ REFERENCE NO. 19 SHEET 12 OF 15
after 1978

NOTES BARNAISEL DATE 7-9-01 ROUTE 109
 H.C. MOSER WEATHER SUNNY COUNTY FULTON
 R.C. CANTERBURY TEMP. +85° TOWNSHIP YORK
 SECTION 13
 T 7 N 7 E

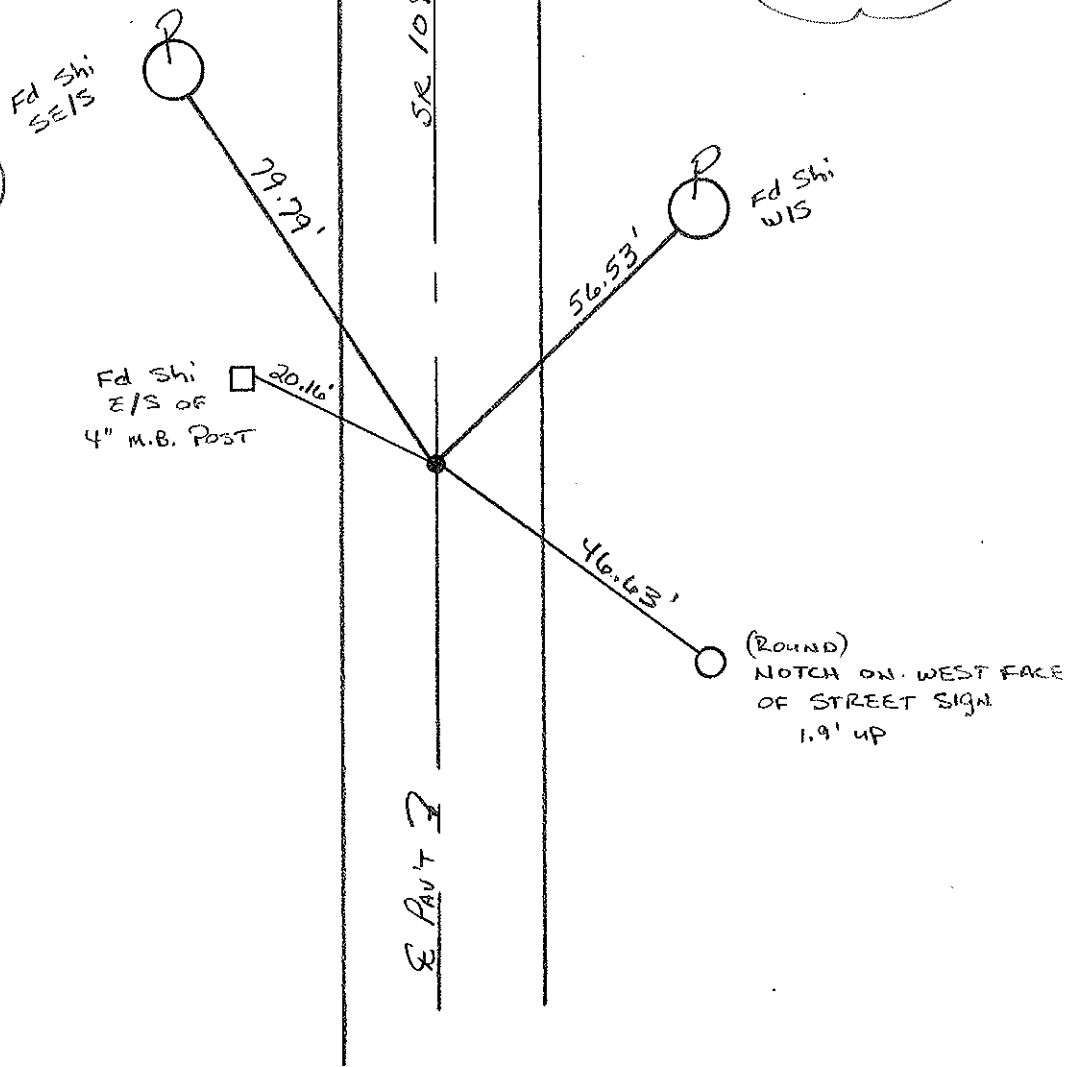
TYPE MONUMENT PK/WASHER
 ON SURFACE - BELOW YES
 LEFT - & PAV'T. - RIGHT YES
10.9' TO LT. EDGE PAVEMENT
 S.L.M. 290+18



Record:
 ORIGIN UNKNOWN

Reset Sm. RR. SPIKE
 8-23-01
 WDB

NOTE:
 This point
 may be
 old st 19 POINT
 dated 7-16-73
 sheet 7
 See P.K. & I.P.M.



Fd Shi
 E/S OF
 4" M.B. POST

(ROUND)
 NOTCH ON WEST FACE
 OF STREET SIGN
 1.9' UP

O.D.O.T. DISTRICT 2 SURVEY OFFICE

PERSONNEL

REFERENCE NO. 19

SHEET 22 OF 27

NOTES CORDES

H.C. VAN DUSEN

DATE 8-15-94

ROUTE 109

R.C. BARNHISEL

WEATHER SUNNY

COUNTY FULTON

SLOVAK P

TEMP. +65° F

TOWNSHIP YORK

SECTION 13

T. 7 N. R. 7 E

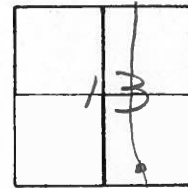
TYPE MONUMENT PK NAIL

ON SURFACE - BELOW YES

~~LEFT~~ & PAV'T. - RIGHT YES

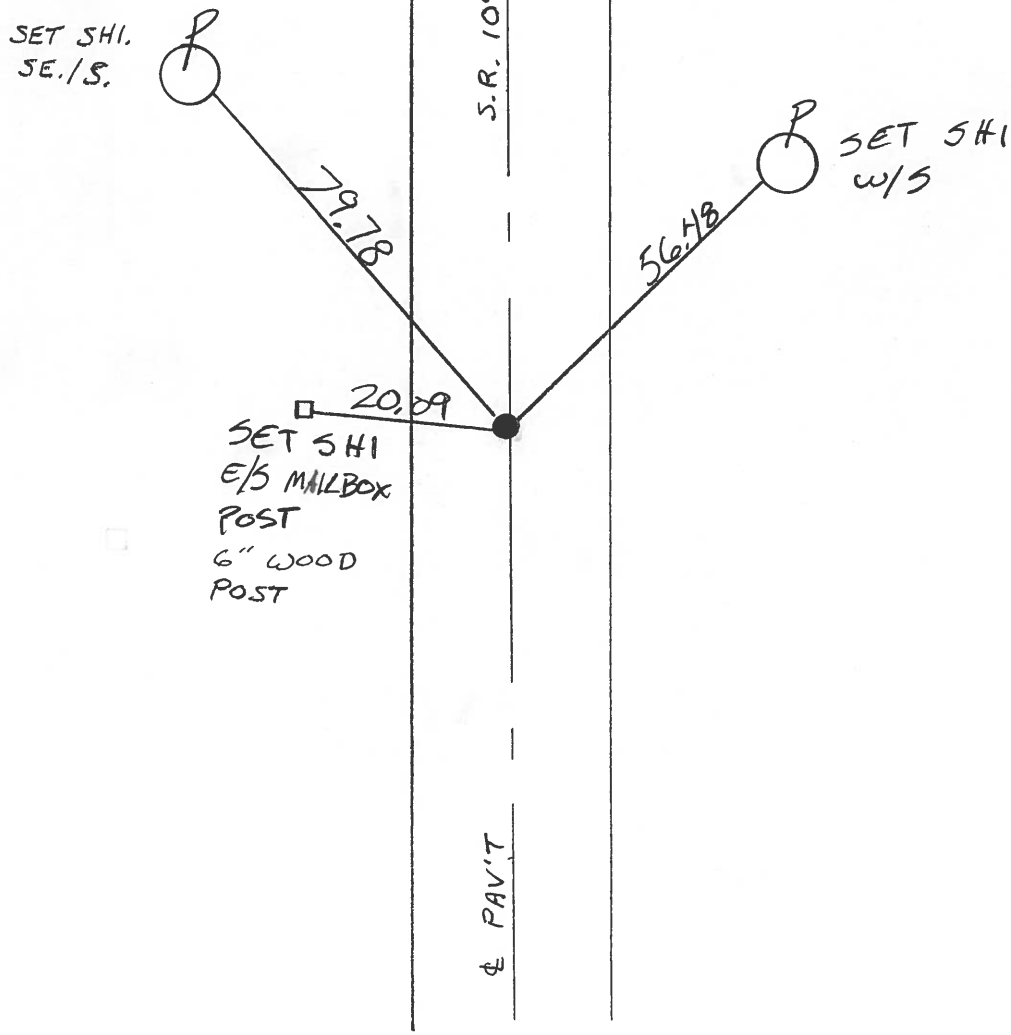
10.5 TO RT EDGE PAVEMENT

S.L.M. 290 + 12



RECORDS:
ORIGIN UNKNOWN

SET PK + WASHER
10-14-94
SCH



PERSONNEL	TITLE	PERSONNEL	TITLE	COUNTY	DATE
Red Beach				FULTON	Sept 1970
Newcomb				S. R. 109	WEATHER
Knape				SEC. 13 York Twp Delta	TEMP.
Wise					

DESCRIPTION **CONTROL POINTS** JOB NO.

