

O.D.O.T. DISTRICT 2 SURVEY OFFICE (USE ONLY)

PERSONNEL

REFERENCE NO. 20

SHEET 30 OF 35

NOTES NIESE

DATE 4-23-21

ROUTE SR 109

H.C. AUBLE

WEATHER CLOUDY

COUNTY FULTON

R.C. NIESE

TEMP. 41°

TOWNSHIP YORK

DWG BY AUBLE PID 101295

SECTION 13

T 7 N R 7 E

TYPE MONUMENT MONBOX W/1" IPIN

ON SURFACE - ~~BELOW~~ ON

OFFSET  $\bar{C}$  PAVEMENT 8.3'  $\bar{L}$  : RT

2.7' TO RT EDGE PAVEMENT

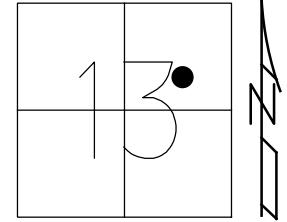
STATION: 308+58.28

HORZ.DATUM: NAD83(2011)

GEOID: 12A

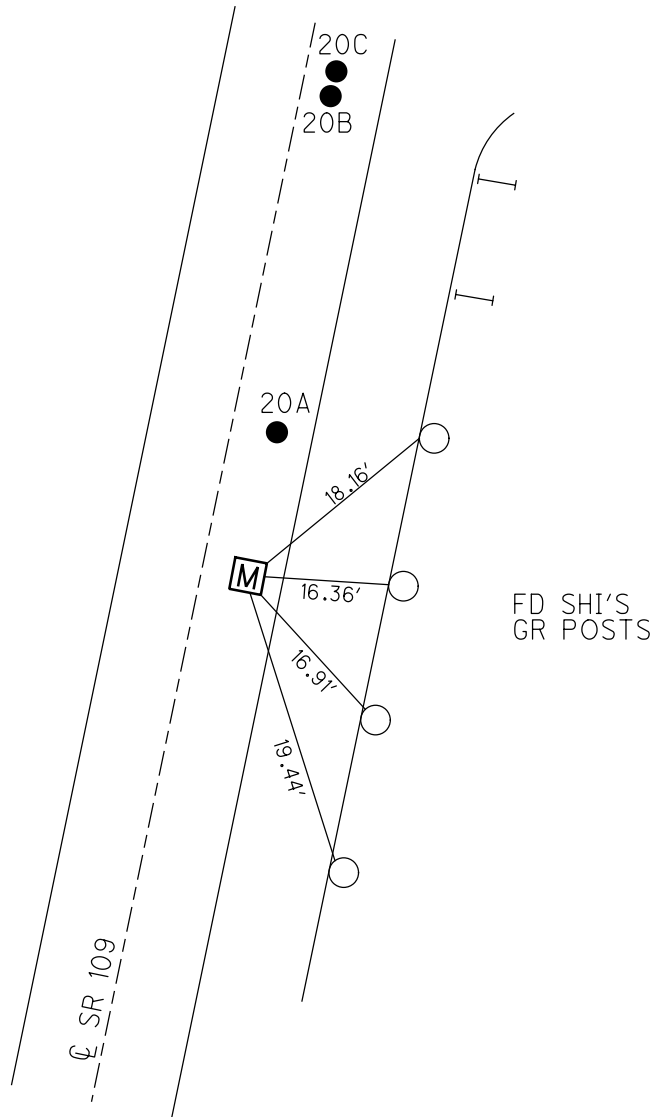
GRID: NORTHING: 695720.258

EASTING: 1556953.824



RECORD: P.I.  
 STA. 308+42.14  
 FD MONBOX  
 10-29-15, JFO  
 FD MONBOX  
 W/1" IPIN  
 REF20  
 12-18-15, JFO  
 REF20  
 1-9-20, JLL

DIST:  
 20-20A= 16.17'  
 20-20B= 65.22'  
 20-20C= 65.62'



O.D.O.T. DISTRICT 2 SURVEY OFFICE (USE ONLY)

PERSONNEL \_\_\_\_\_ REFERENCE NO. 20 SHEET 30 OF 31

NOTES BARNHEISEL DATE 7-9-01 ROUTE SR 109  
 H.C. MOSER WEATHER SUNNY COUNTY FULTON  
 R.C. CANTERBURY TEMP. 85° TOWNSHIP YORK  
 \_\_\_\_\_ SECTION 13  
 \_\_\_\_\_ T 7 N R 7 E

TYPE MONUMENT CMON

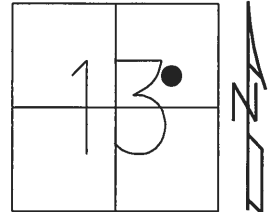
ON SURFACE - ~~BELOW~~ ON \_\_\_\_\_

~~LEFT~~ - CL PAV'T - RIGHT 7.6'

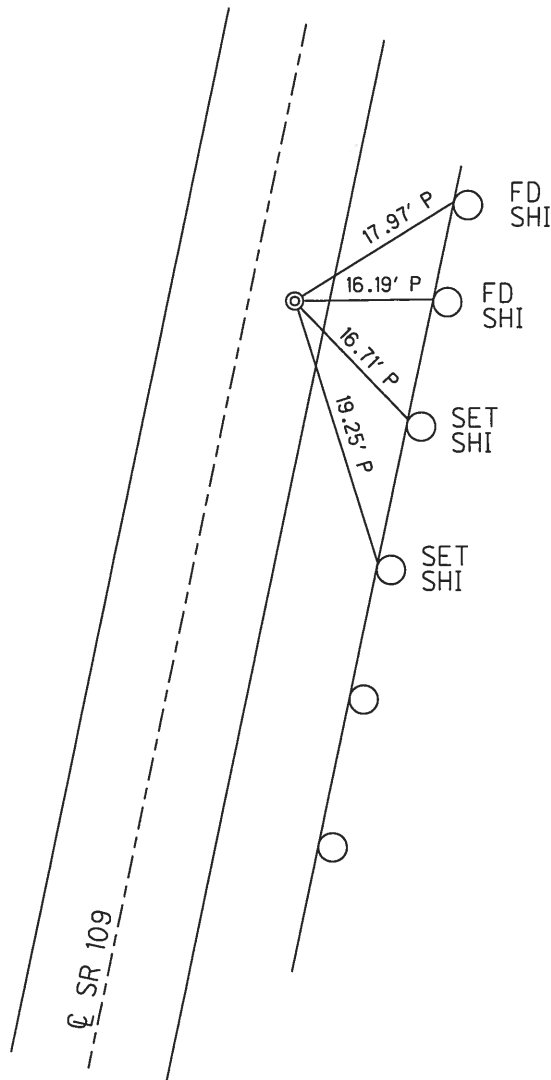
2.7' TO RT EDGE PAVEMENT

S.L.M. 308+58.28

GRID: NORTHING: 695720.236 EASTING: 1556953.831



RECORD: CL CONST. P.I.  
 STA. 308+42.14  
 SEE PLAN:  
 FUL-109-5.40 (1978)  
 FD MONBOX  
 10-29-15, JFO  
 FD MON BOX  
 W/1" IPIN  
 REF20  
 12-18-15, JFO



# O.D.O.T. DISTRICT 2 SURVEY OFFICE

PERSONNEL

REFERENCE NO. 20  
after 1978

SHEET 15 OF 15

NOTES BARNHISEL

H.C. MOSK

R.C. CANTERBURY

DATE 7-9-01

WEATHER SUNNY

TEMP. +85°

ROUTE 109

COUNTY FULTON

TOWNSHIP YORK

SECTION 13

T 7 N R 7 E

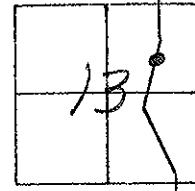
TYPE MONUMENT I. Rod in Conc. Mon.

ON SURFACE - ~~BELOW~~ yes

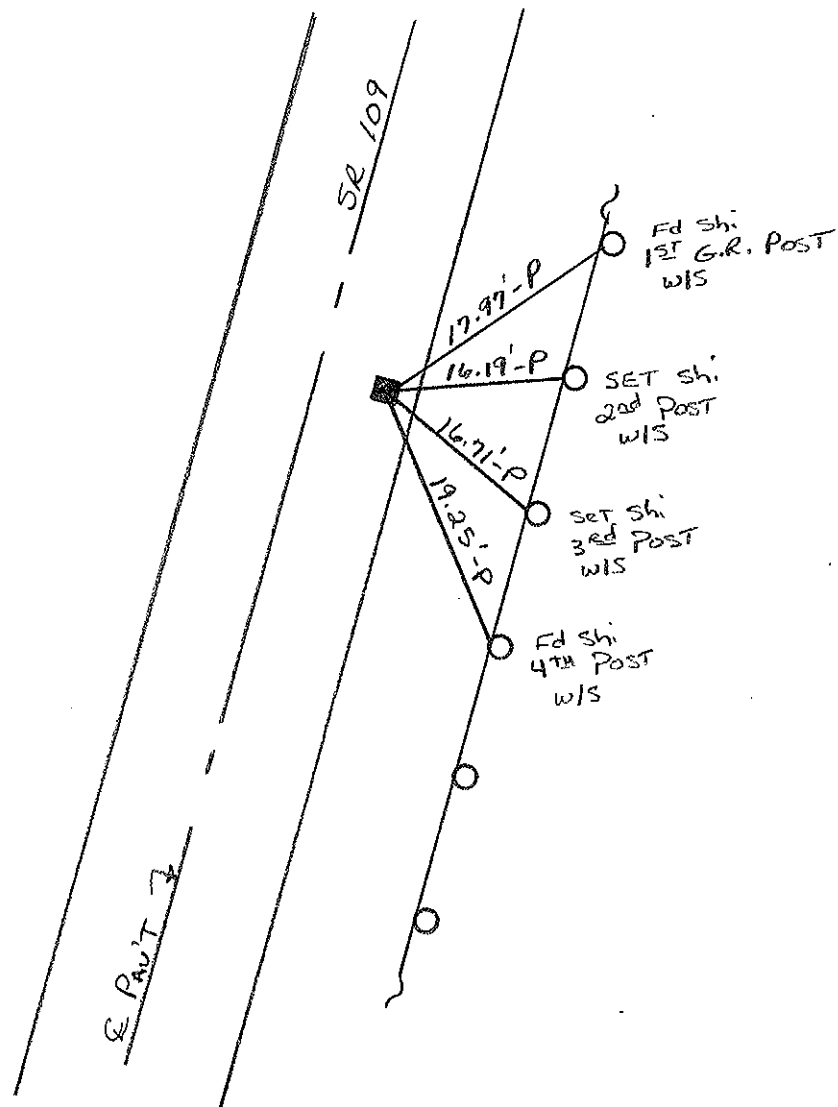
LEFT - 0 PAV'T. - RIGHT 7.6'

2.7' TO RT EDGE PAVEMENT

S.L.M. 308+42



Records:  
 & const.  
 P.I. 308+42.14  
 See PLAN!  
 FUL-109-540 (1978)



O.D.O.T. DISTRICT 2 SURVEY OFFICE

PERSONNEL

REFERENCE NO. 20

SHEET 26 OF 27

NOTES CORDES

H.C. VAN DUSEN

DATE 8-15-94

ROUTE 109

R.C. BARNHISEL

WEATHER SUNNY

COUNTY FULTON

SLOVAK P

TEMP. +65° F

TOWNSHIP YORK

SECTION 13

T 7 N R 7 E

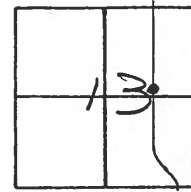
TYPE MONUMENT MON. BOX

ON SURFACE - ~~BELOW~~ YES

~~LEFT & PAV'T.~~ - RIGHT 7.6'

4.7' TO RT. EDGE PAVEMENT

S.L.M. 308 + 42



RAISED WITH  
CONSTRUCTION  
10-14-94  
SCH

S.R. 109

MON. BOX



17.90' → 1<sup>ST</sup> WOODEN POST SET SHI.

15.00' → SET LATH

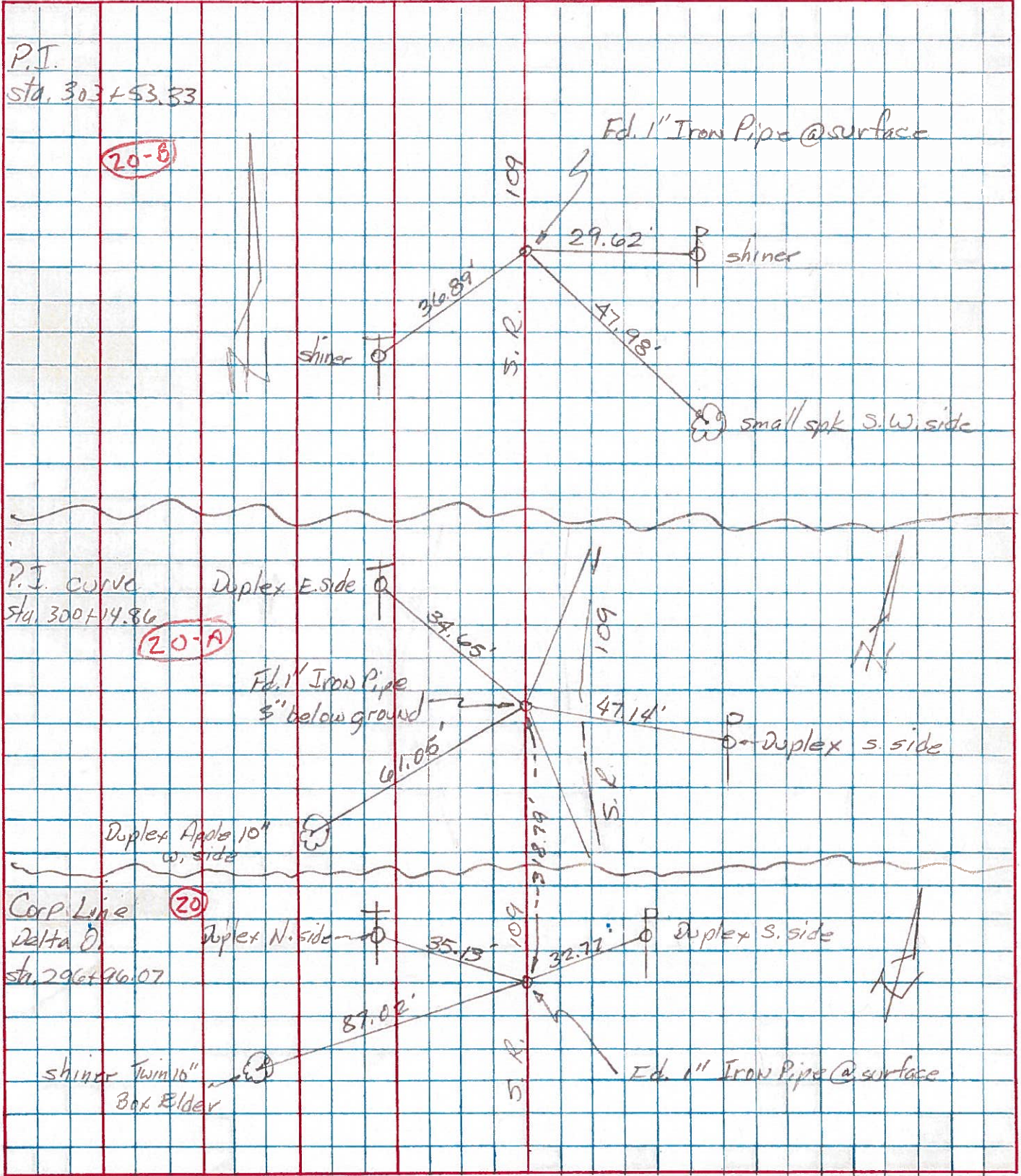
19.20' →

4<sup>TH</sup> WOODEN POST SET SHI.

& PAV'T.

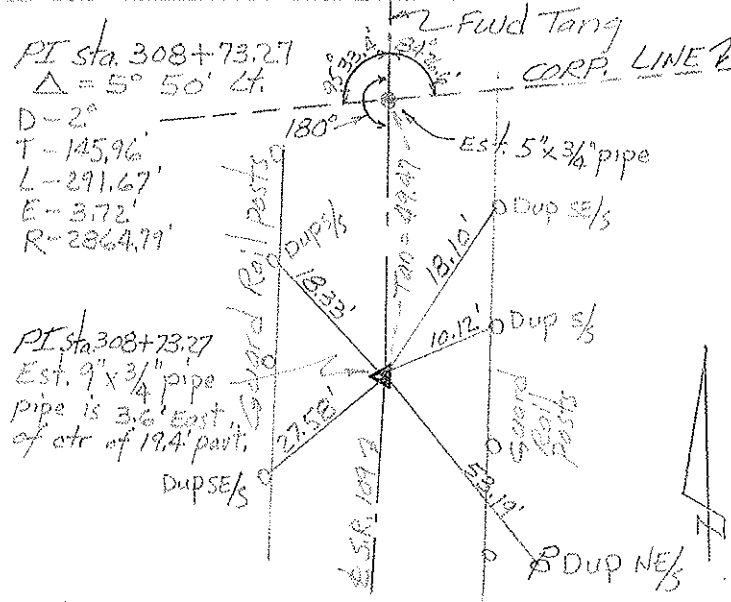
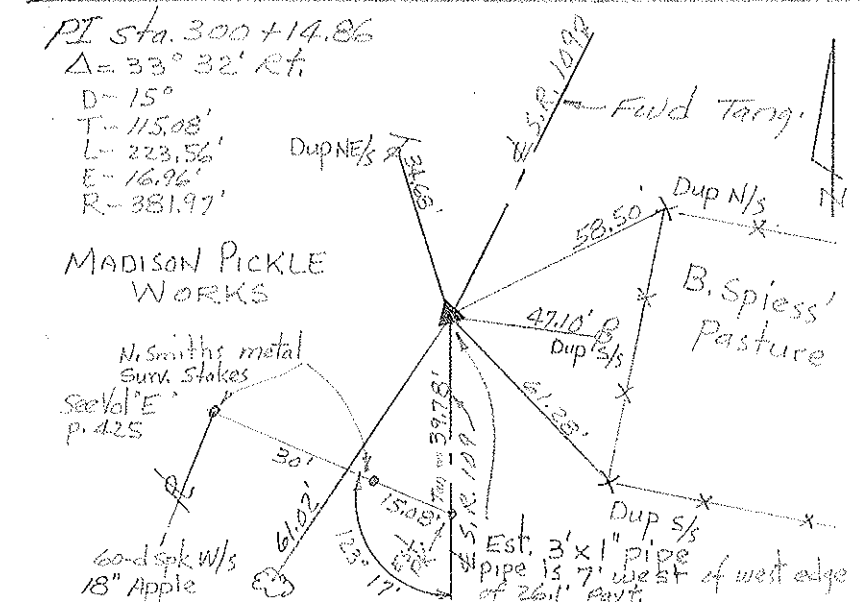
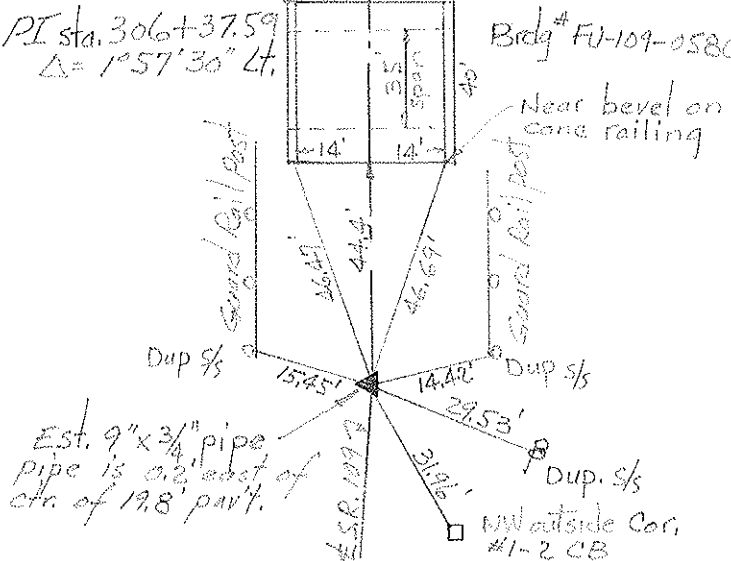
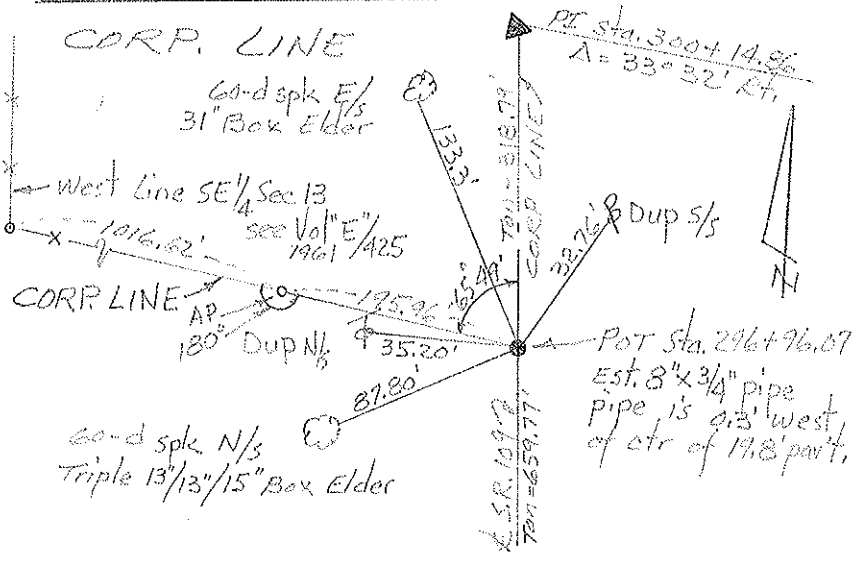
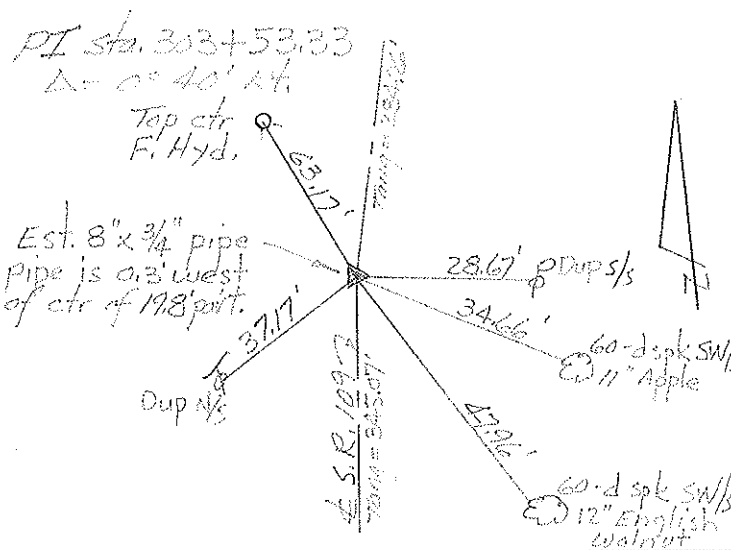
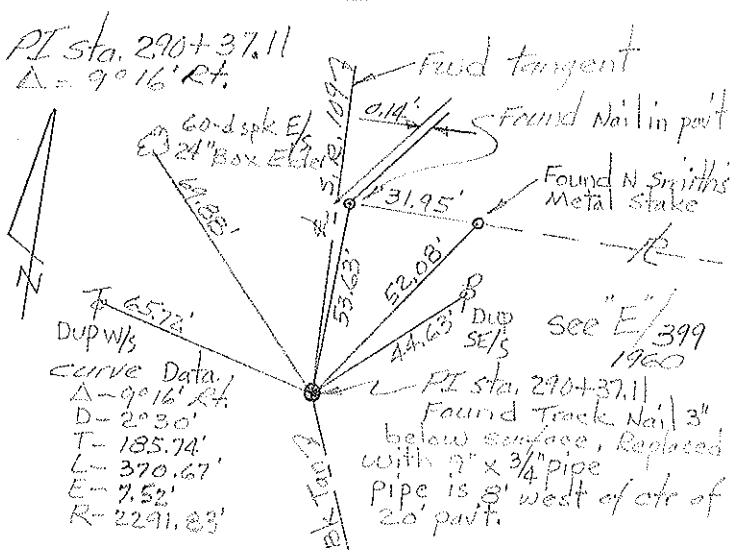
PERSONNEL	TITLE	PERSONNEL	TITLE	COUNTY	DATE	WEATHER	TEMP
Tomsic		Boyle		Fulton	July 16, 1973		
Neuser				S. R. 109			
Granata				SEC.			
Lawyo							

DESCRIPTION \_\_\_\_\_ LEFT \_\_\_\_\_ CENTER LINE \_\_\_\_\_ RIGHT \_\_\_\_\_ JOB NO. \_\_\_\_\_



PERSONNEL	TITLE	PERSONNEL	TITLE	COUNTY	DATE
Red Beach				FULTON	Sept 1970
Newcomb				S. R. 109	WEATHER
Knape				SEC. 13 York Twp Delta	TEMP.
Wise					

DESCRIPTION **CONTROL POINTS** JOB NO.



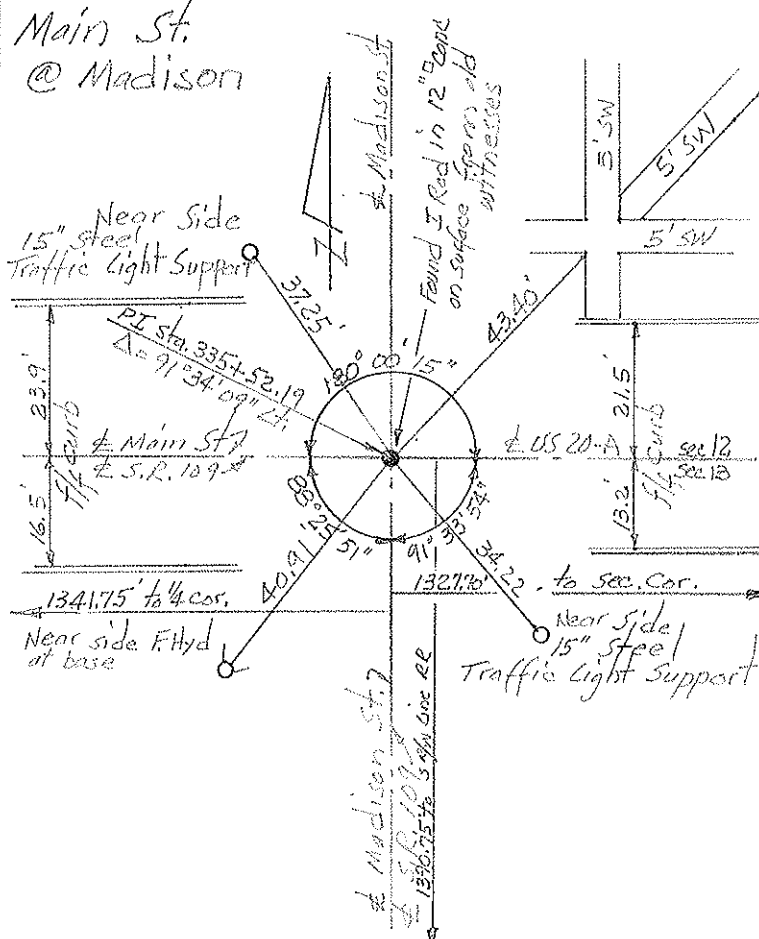
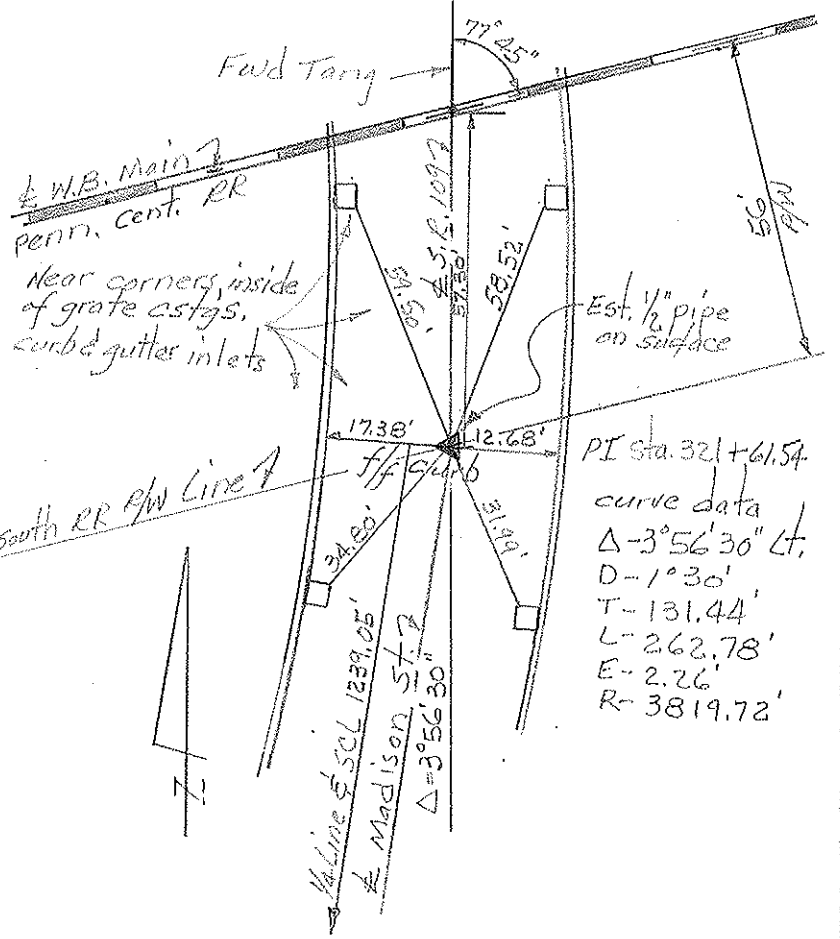
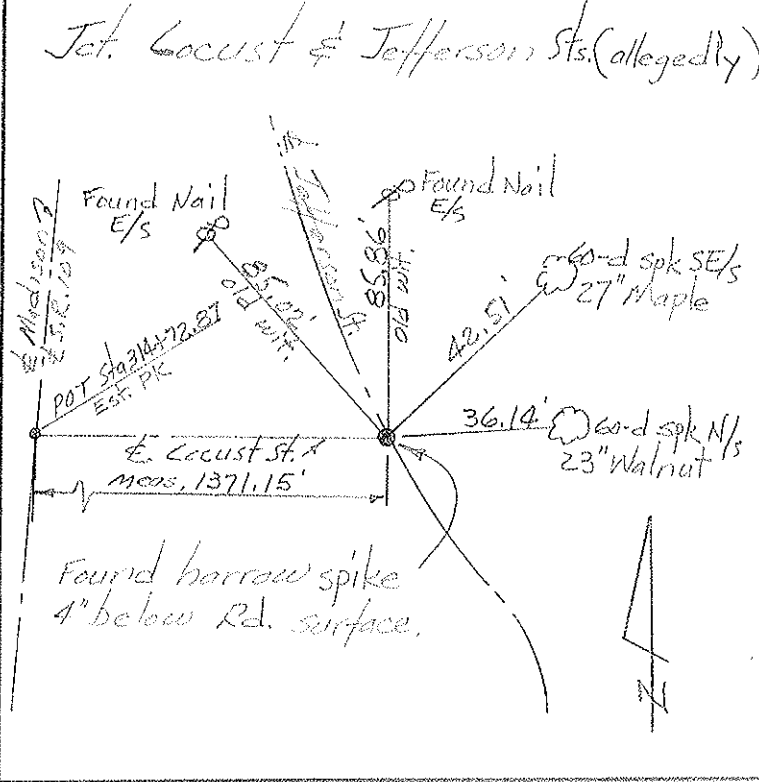
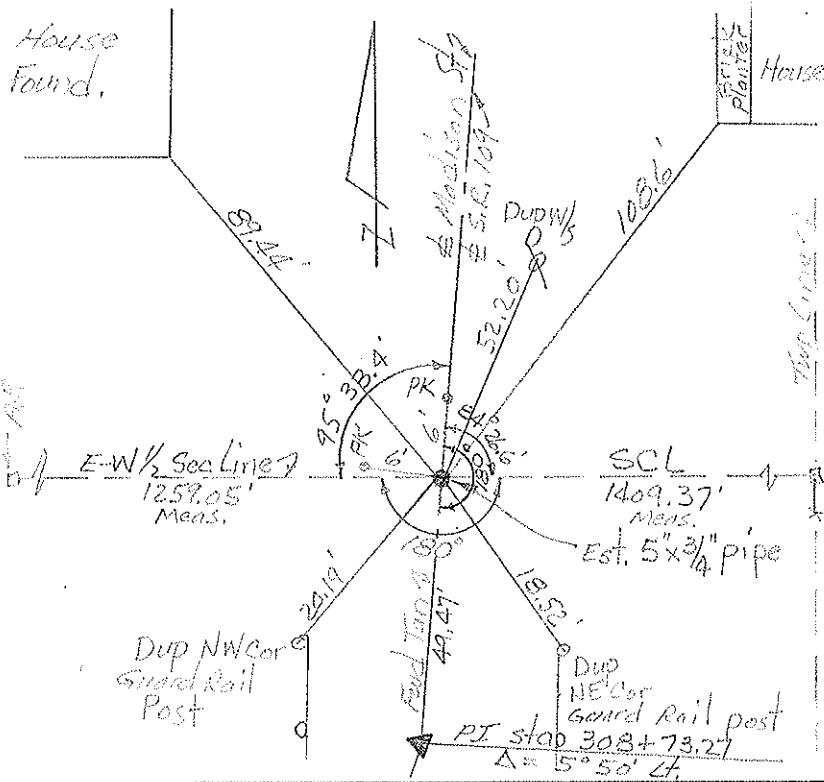
PERSONNEL	TITLE	PERSONNEL	TITLE
Red Beach			
Newcomb			
Knape			
Wise			

COUNTY Fulton DATE Sept 1970

S. R. 109 WEATHER \_\_\_\_\_

SEC. 13, Delta TEMP. \_\_\_\_\_

DESCRIPTION CONTROL POINTS JOB NO. \_\_\_\_\_



PERSONNEL TITLE PERSONNEL TITLE

Red Beach  
Newcomb  
Knapa  
Wise

COUNTY FULTON

DATE Sept. 1970

S. R. 109

WEATHER

SEC. SE 1/4 Sec. 13, YORK TWP

DESCRIPTION ALIGNMENT & CONTROLS

JOB NO.

