

O.D.O.T. DISTRICT 2 SURVEY OFFICE (USE ONLY)

PERSONNEL

REFERENCE NO. 24 A

SHEET 4 OF 35

NOTES RHOADES DATE 4/23/21  
 H.C. O'DONNELL WEATHER CLOUDY  
 R.C. RHOADES TEMP. 46°

ROUTE SR 109  
 COUNTY FULTON  
 TOWNSHIP PIKE  
 SECTION 3  
T 7 N R 7 E

DWG BY NIESE PID PAVE TRAIN

TYPE MONUMENT MONBOX W/ 1" IPIN

ON SURFACE - ~~BELOW~~ ON

OFFSET Q PAVEMENT ON LT : RT

18.6' TO RT EDGE PAVEMENT

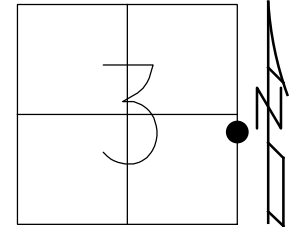
STATION: 503+53.77

HORZ.DATUM: NAD83(2011)

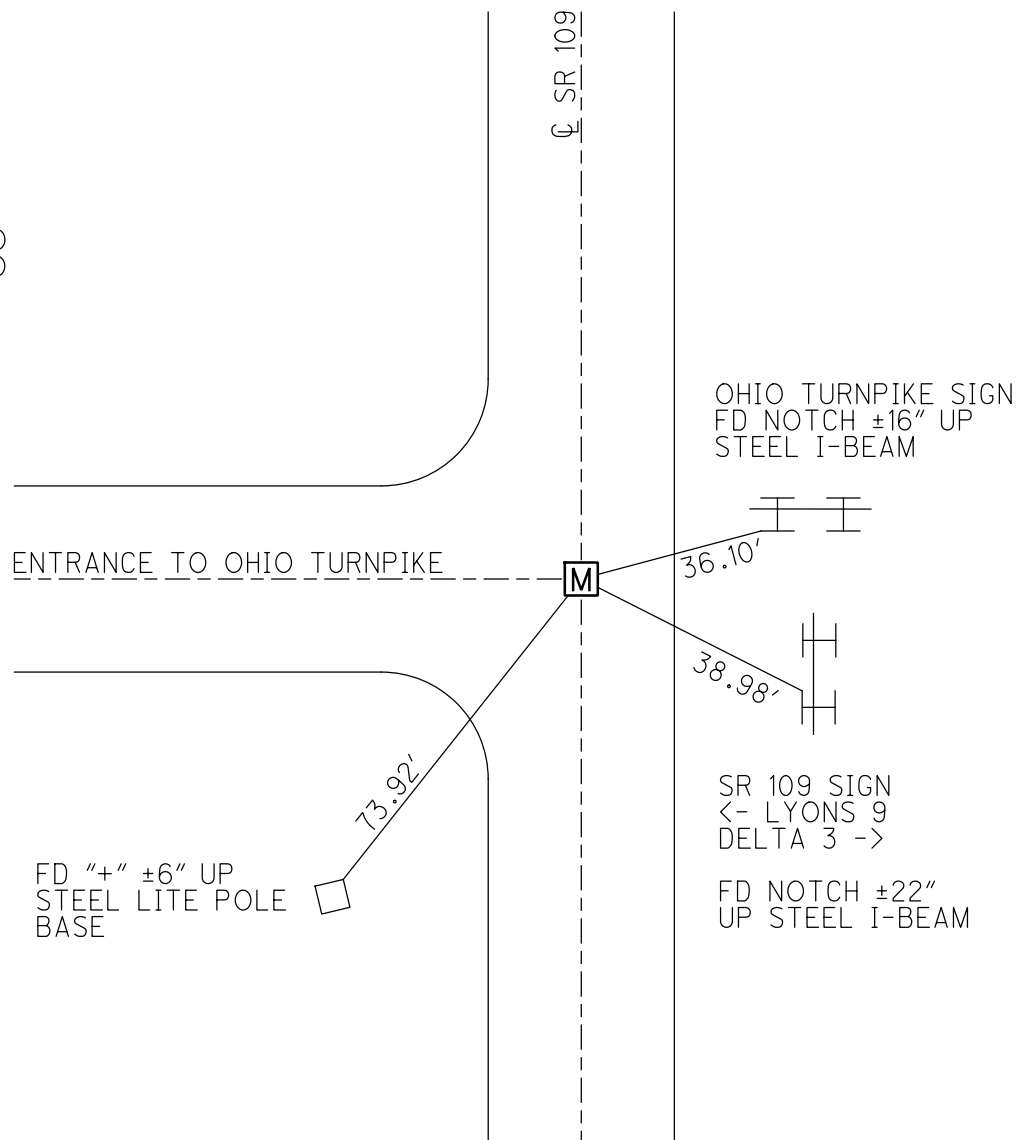
GEOID: 2018

GRID: NORTHING: 705926.010

EASTING: 1547931.147



RECORD:  
 FD MONBOX  
 6/8/12, SAH  
 3/4/13, MC  
 FD MONBOX  
 W/ 1" IPIN  
 REFA24  
 4/23/21, JFO  
 8/26/21, JFO  
 1/11/23, TDN



O.D.O.T. DISTRICT 2 SURVEY OFFICE (USE ONLY)

PERSONNEL

REFERENCE NO. 24 A

SHEET 4 OF 35

NOTES RHOADES

DATE 4/23/21

ROUTE SR 109

H.C. O'DONNELL

WEATHER CLOUDY

COUNTY FULTON

R.C. RHOADES

TEMP. 46°

TOWNSHIP PIKE

SECTION 3

DWG BY NIESE

PID PAVE TRAIN

T 7 N R 7 E

TYPE MONUMENT MONBOX W/ 1" IPIN

ON SURFACE - ~~BELOW~~ ON

OFFSET Q PAVEMENT ON LT : RT

18.6' TO RT EDGE PAVEMENT

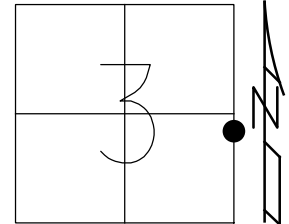
STATION: 503+53.77

HORIZ. DATUM: NAD83(2011)

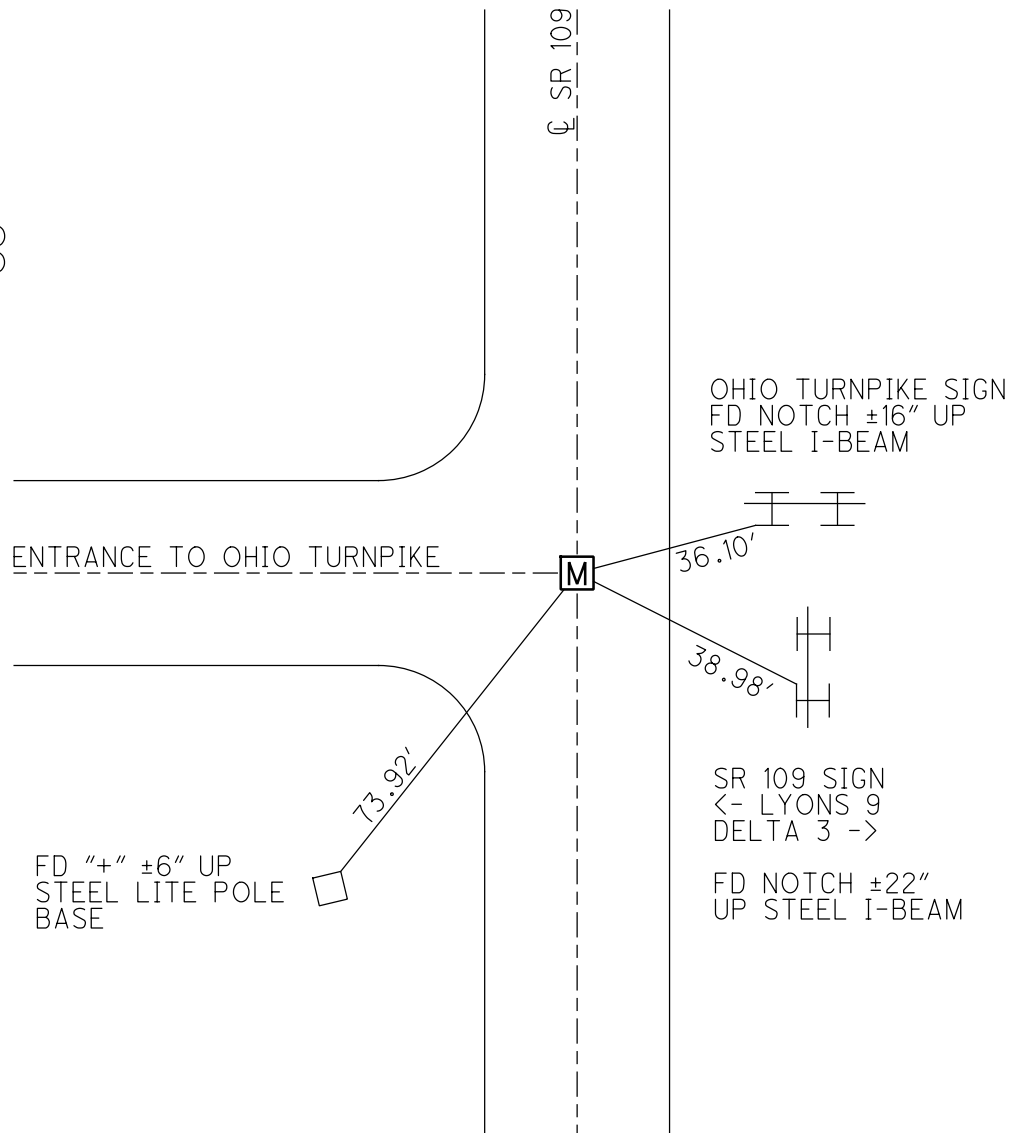
GEOID: 2018

GRID: NORTHING: 705926.010

EASTING: 1547931.147



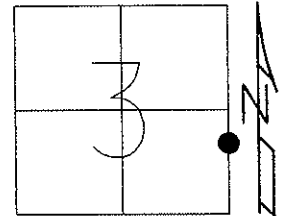
RECORD:  
 FD MONBOX  
 6/8/12, SAH  
 3/4/13, MC  
 FD MONBOX  
 W/ 1" IPIN  
 REFA24  
 4/23/21, JFO  
 8/26/21, JFO



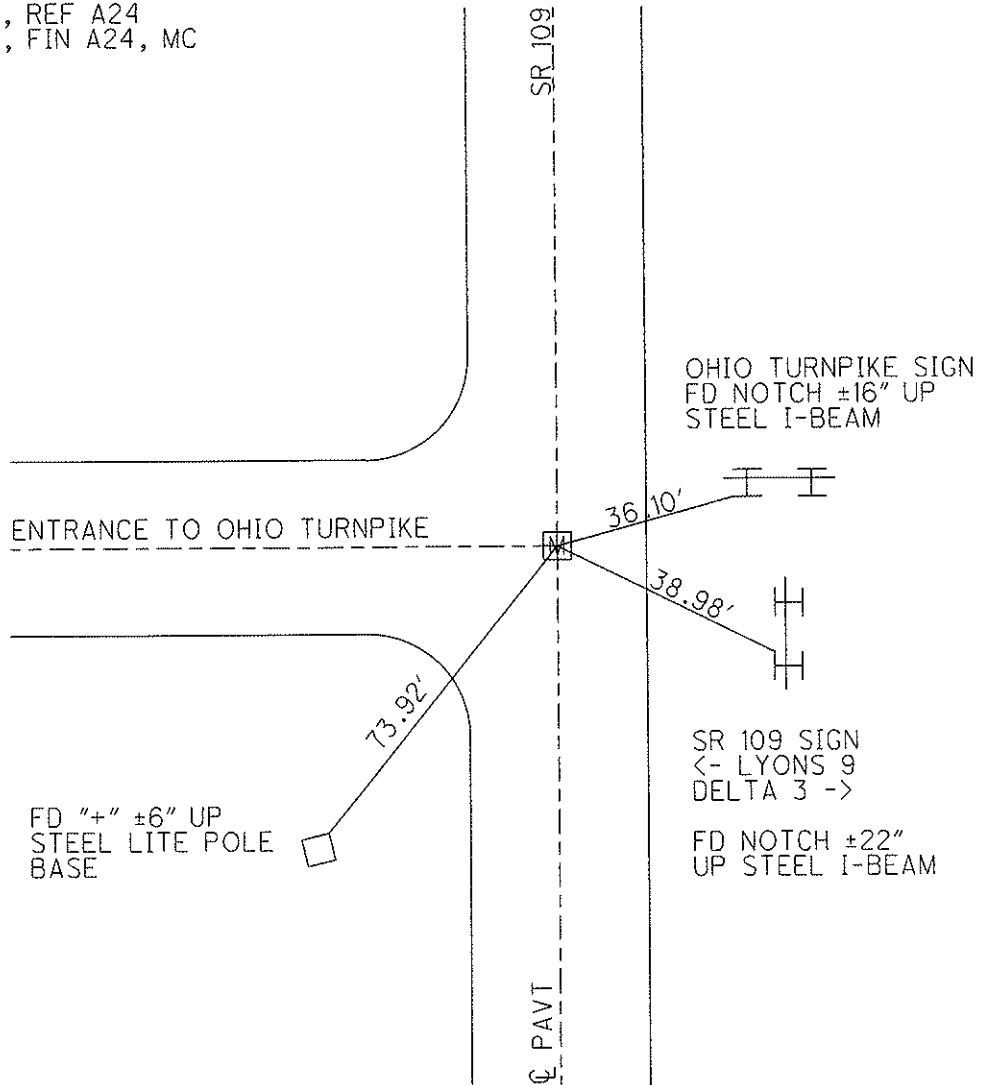
O.D.O.T. DISTRICT 2 SURVEY OFFICE (USE ONLY)

PERSONNEL	REFERENCE NO. <u>24-A</u>	SHEET <u>4</u> OF <u>35</u>
NOTES <u>HUSS</u>	DATE <u>06-08-12</u>	ROUTE <u>SR 109</u>
H.C. <u>HUSS</u>	WEATHER <u>NICE</u>	COUNTY <u>FULTON</u>
R.C. <u>CANTERBURY</u>	TEMP. <u>76°</u>	TOWNSHIP <u>PIKE</u>
<u>HARBAUGH</u>		SECTION <u>3</u>
<u>COUTCHER</u>		T <u>7</u> N R <u>7</u> E

TYPE MONUMENT \_\_\_\_\_ MON BOX \_\_\_\_\_  
 ON SURFACE - BELOW \_\_\_\_\_ ON \_\_\_\_\_  
 LEFT -  $\text{C}$  PAV'T - RIGHT \_\_\_\_\_ BOTH \_\_\_\_\_  
18.6' TO RT EDGE PAVEMENT  
 S.L.M. \_\_\_\_\_ 504+76 \_\_\_\_\_  
 Grid: Northing: 705926.012 Easting: 1547931.104



06-08-12 GPS, REF A24  
 03-04-13 GPS, FIN A24, MC



# O.D.O.T. DISTRICT 2 SURVEY OFFICE

PERSONNEL \_\_\_\_\_

REFERENCE NO. 24-A SHEET 3 OF 28

NOTES LOEHRYE

H.C. HUSS

R.C. VAN DUSEN

DATE 10-6-97

WEATHER Nice

TEMP. +76

ROUTE S.R. 109

COUNTY Fulton

TOWNSHIP Pike

SECTION 3

T 7 N R 7 E

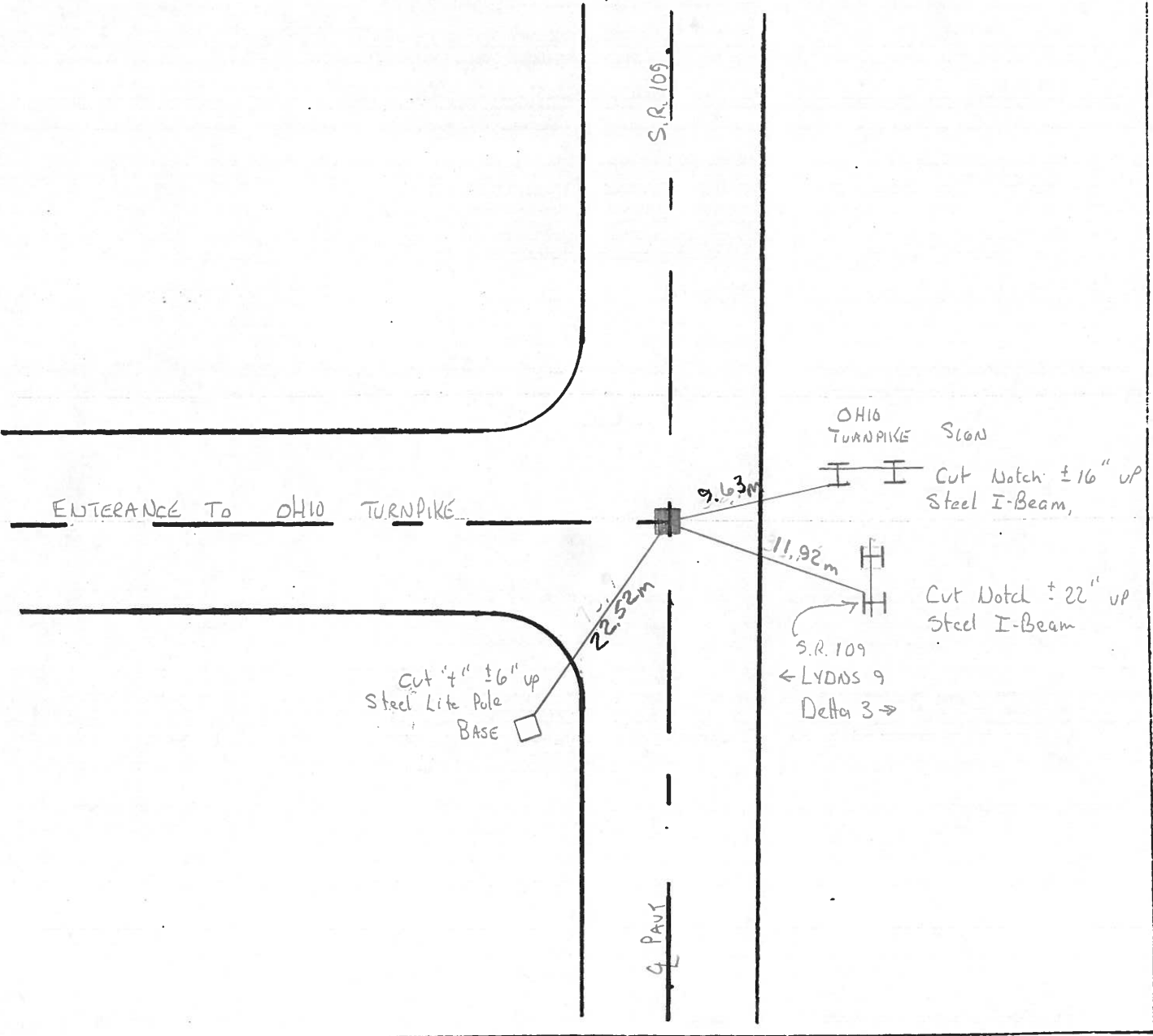
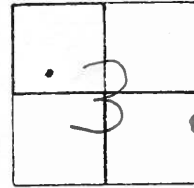
TYPE MONUMENT Man Box

ON SURFACE - BELOW Yes

LEFT - C PAV'T. - RIGHT Both

18.6 TO RT EDGE PAVEMENT

S.L.M. 504 + 76



PERSONNEL	TITLE	PERSONNEL	TITLE	COUNTY	DATE
Red Beach				FULTON	Oct. 1970
Newcomb				S. R. 109	WEATHER
Knappe				SEC. US-20-A North	TEMP.
Wise					JOB NO.

ALIGNMENT & CONTROLS

