

O.D.O.T. DISTRICT 2 SURVEY OFFICE (USE ONLY)

PERSONNEL

REFERENCE NO. 24 B

SHEET 5 OF 35

NOTES RHOADES

DATE 4/23/21

ROUTE SR 109

H.C. O'DONNELL

WEATHER CLOUDY

COUNTY FULTON

R.C. RHOADES

TEMP. 46°

TOWNSHIP PIKE

DWG BY NIESE PID PAVE TRAIN

SECTION 3

T 7 N R 7 E

TYPE MONUMENT MONBOX W/ 1" IPIN

ON SURFACE - ~~BELOW~~ ON

OFFSET Q PAVEMENT ON LT : RT

14.1' TO RT EDGE PAVEMENT

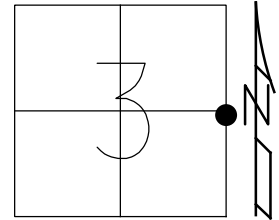
STATION: 506+70.75

HORIZ.DATUM: NAD83(2011)

GEOID: 2018

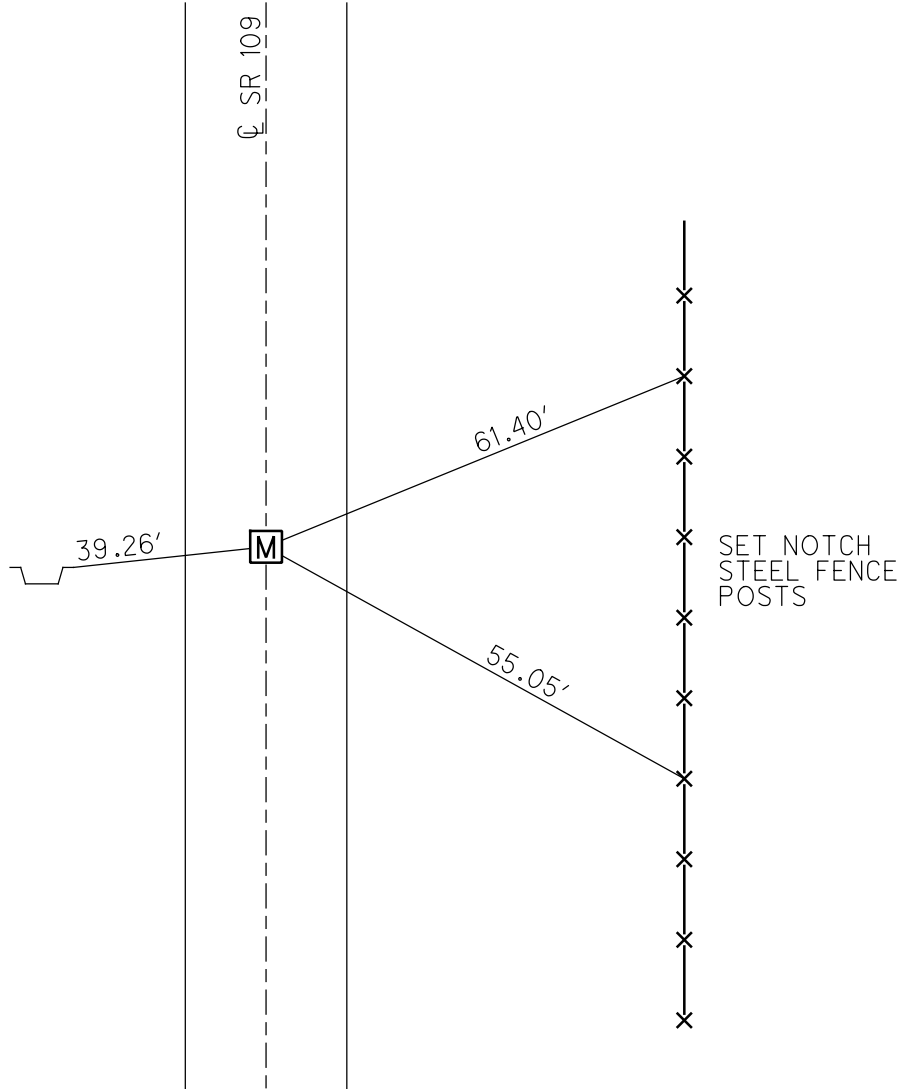
GRID: NORTHING: 706242.937

EASTING: 1547936.941



RECORD:
 FD MONBOX
 354.89' SOUTH OF
 RELOCATED CR HJ
 6/8/12, SAH
 3/4/13
 FD MONBOX
 W/ 1" IPIN
 REFB24
 4/23/21, JFO
 8/26/21, JFO
 1/11/23, TDN

SET NOTCH NE
 CORNER STEEL
 SIGN POST



O.D.O.T. DISTRICT 2 SURVEY OFFICE (USE ONLY)

PERSONNEL

REFERENCE NO. 24 B

SHEET 5 OF 35

NOTES RHOADES DATE 4/23/21
 H.C. O'DONNELL WEATHER CLOUDY
 R.C. RHOADES TEMP. 46°

ROUTE SR 109
 COUNTY FULTON
 TOWNSHIP PIKE
 SECTION 3

DWG BY NIESE PID PAVE TRAIN

T 7 N R 7 E

TYPE MONUMENT MONBOX W/ 1" IPIN

ON SURFACE - ~~BELOW~~ ON

OFFSET \varnothing PAVEMENT ON LT : RT

14.1' TO RT EDGE PAVEMENT

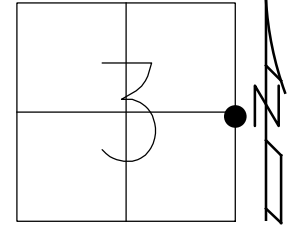
STATION: 506+70.75

HORZ.DATUM: NAD83(2011)

GEOID: 2018

GRID: NORTHING: 706242.937

EASTING: 1547936.941



RECORD:
 FD MONBOX
 354.89' SOUTH OF
 RELOCATED CR HJ
 6/8/12, SAH
 3/4/13
 FD MONBOX
 W/ 1" IPIN
 REFB24
 4/23/21, JFO
 8/26/21, JFO

SET NOTCH NE
 CORNER STEEL
 SIGN POST

39.26'

\varnothing SR 109

M

61.40'

55.05'

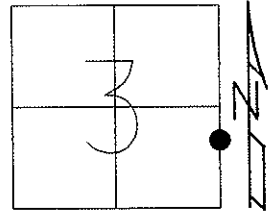
SET NOTCH
 STEEL FENCE
 POSTS



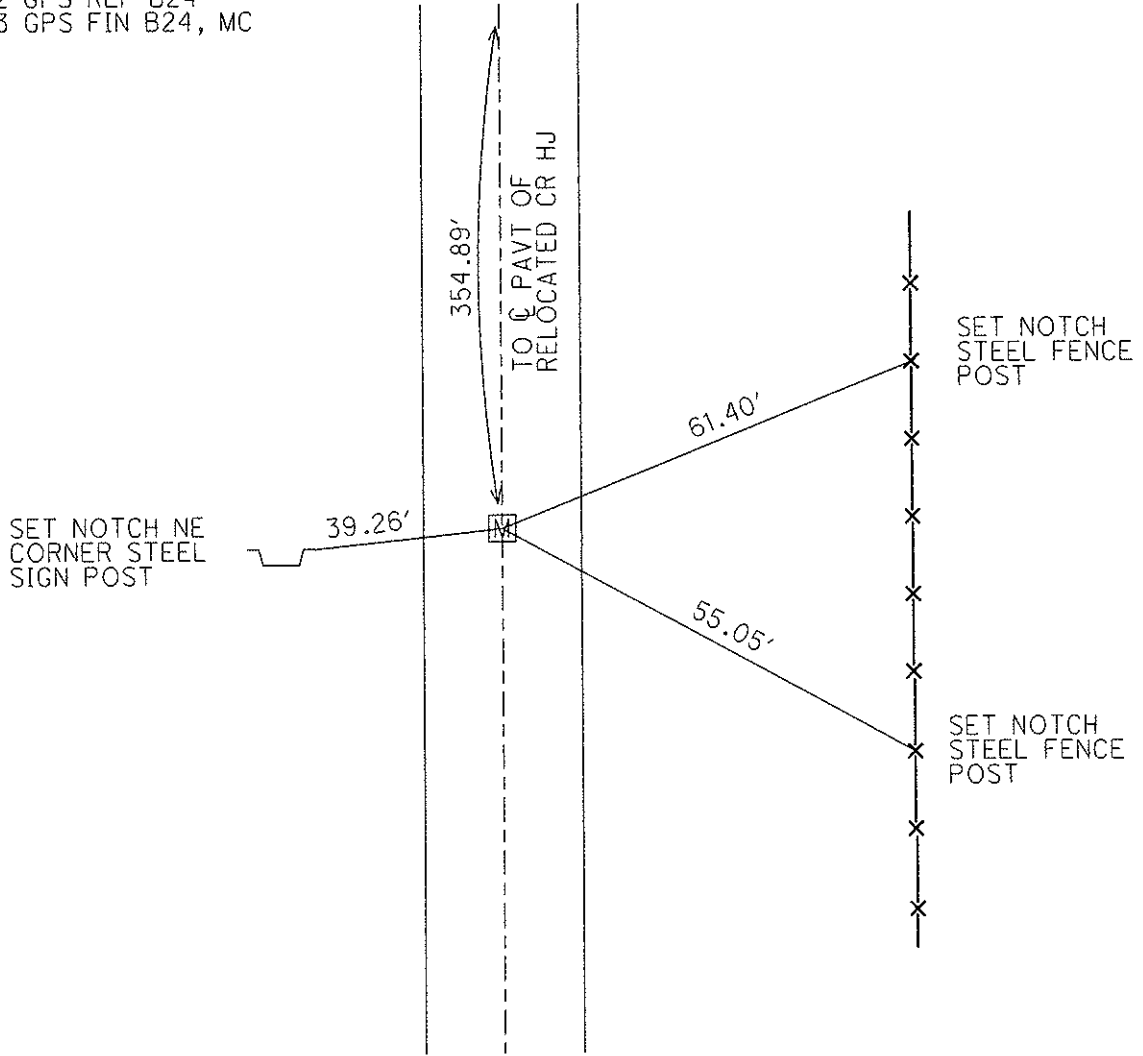
O.D.O.T. DISTRICT 2 SURVEY OFFICE (USE ONLY)

PERSONNEL	REFERENCE NO. <u>24-B</u>	SHEET <u>5</u> OF <u>35</u>
NOTES	DATE <u>06-08-12</u>	ROUTE <u>SR 109</u>
H.C. <u>HUSS</u>	WEATHER <u>NICE</u>	COUNTY <u>FULTON</u>
R.C. <u>CANTERBURY</u>	TEMP. <u>78°</u>	TOWNSHIP <u>PIKE</u>
<u>HARBAUGH</u>		SECTION <u>3</u>
<u>COUTCHER</u>		T <u>7</u> N R <u>7</u> E

TYPE MONUMENT _____ MON BOX _____
 ON SURFACE - BELOW _____ ON _____
 LEFT - \odot PAV'T - RIGHT _____ ON _____
14.1' TO RT. EDGE PAVEMENT
 S.L.M. _____ 508+00 _____
 Grid: Northing: 706242.967 Easting: 1547936.865



06-08-12 GPS REF B24
 03-04-13 GPS FIN B24, MC



O.D.O.T. DISTRICT 2 SURVEY OFFICE

PERSONNEL _____

REFERENCE NO. 24-B

SHEET 4 OF 28

NOTES LOEHRKE

H.C. Huss

R.C. VAN DUSEN

DATE 10-6-97

WEATHER Nice

TEMP. +78

ROUTE S.R. 109

COUNTY FULTON

TOWNSHIP Pike

SECTION 3

T 7 N R 7 E

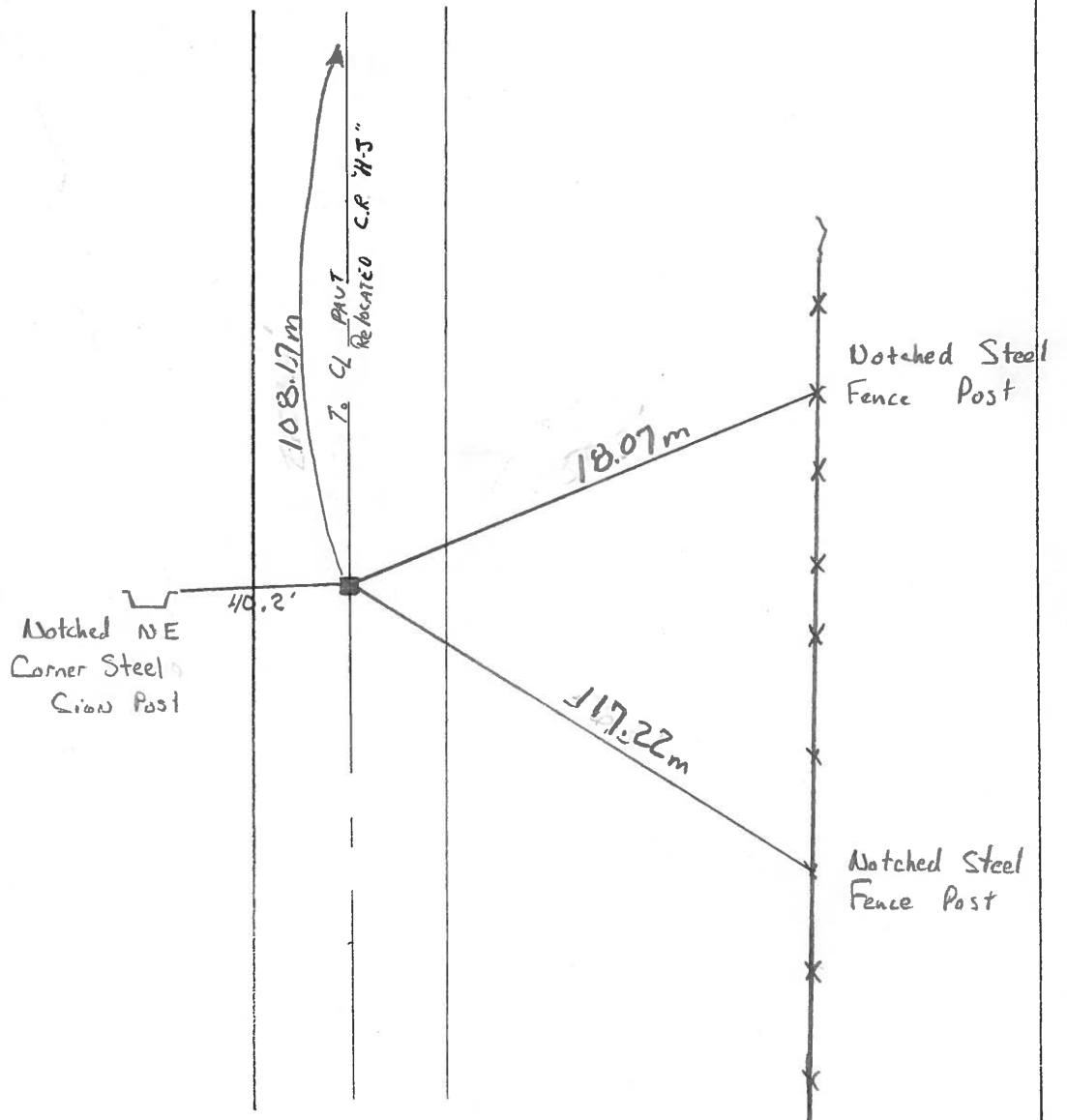
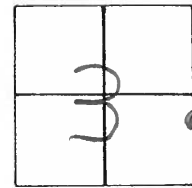
TYPE MONUMENT Moist Bar - Possible P.C. Const.

ON SURFACE - BELOW Yes

~~LEFT~~ - CL PAV'T. - RIGHT Yes

14.1' TO Rt EDGE PAVEMENT

S.L.M. 157484.17 508+00



PERSONNEL	TITLE	PERSONNEL	TITLE	COUNTY	DATE
Red Beach				FULTON	Oct. 1970
Newcomb				S. R. 109	WEATHER
Knappe				SEC. US-20-A North	TEMP.
Wise					JOB NO.

ALIGNMENT & CONTROLS

