

O.D.O.T. DISTRICT 2 SURVEY OFFICE (USE ONLY)

PERSONNEL

REFERENCE NO. 25 A

SHEET 8 OF 35

NOTES RHOADES

DATE 4/23/21

ROUTE SR 109

H.C. O'DONNELL

WEATHER CLOUDY

COUNTY FULTON

R.C. RHOADES

TEMP. 46°

TOWNSHIP PIKE

SECTION 2

DWG BY NIESE

PID PAVE TRAIN

T 7 N R 7 E

TYPE MONUMENT MAG/WASHER

ON SURFACE - ~~BELOW~~ ON

OFFSET 2.6' ~~LT~~ : RT

7.0' TO RT EDGE PAVEMENT

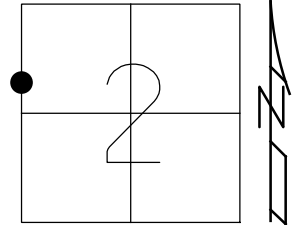
STATION: 515+64.32

HORIZ.DATUM: NAD83(2011)

GEOID: 2018

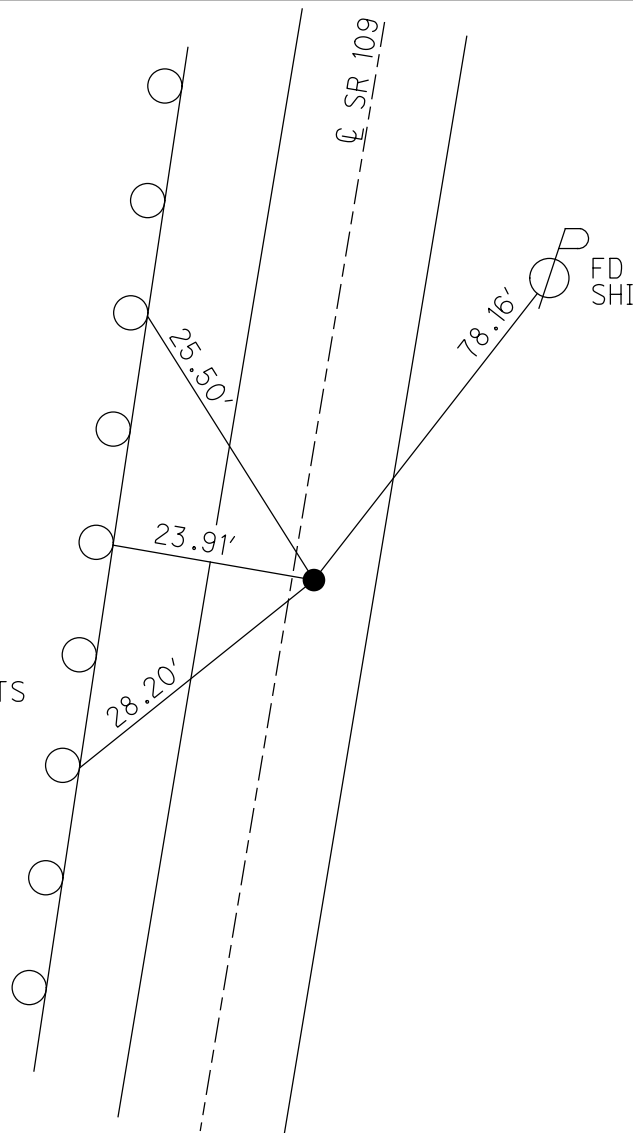
GRID: NORTHING: 707135.124

EASTING: 1547985.971



RECORD: P.I.
 STA 515+40.04
 $\Delta = 20^{\circ}27' LT$
 D=10'
 T=122.52'
 L=245.00'
 E=1.31'
 Rc=5729.58'
 SET P.K./WASHER
 10/01/90, MB
 SET P.K./WASHER
 11/20/96
 FD P.K./WASHER
 6/12/12
 3/04/13, MC
 FD MAG/WASHER
 REFA25
 4/23/21, JFO
 8/26/21, JFO
 1/11/23, TDN

FD SHI
 GR POSTS



O.D.O.T. DISTRICT 2 SURVEY OFFICE (USE ONLY)

PERSONNEL

REFERENCE NO. 25 A

SHEET 8 OF 35

NOTES RHOADES DATE 4/23/21
 H.C. O'DONNELL WEATHER CLOUDY
 R.C. RHOADES TEMP. 46°

ROUTE SR 109
 COUNTY FULTON
 TOWNSHIP PIKE
 SECTION 2
 T 7 N R 7 E

DWG BY NIESE PID PAVE TRAIN

TYPE MONUMENT MAG/WASHER

ON SURFACE - ~~BELOW~~ ON

OFFSET \odot PAVEMENT 2.6' ~~LT~~ : RT

7.0' TO RT EDGE PAVEMENT

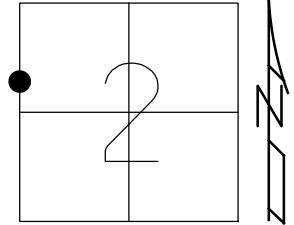
STATION: 515+64.32

HORZ.DATUM: NAD83(2011)

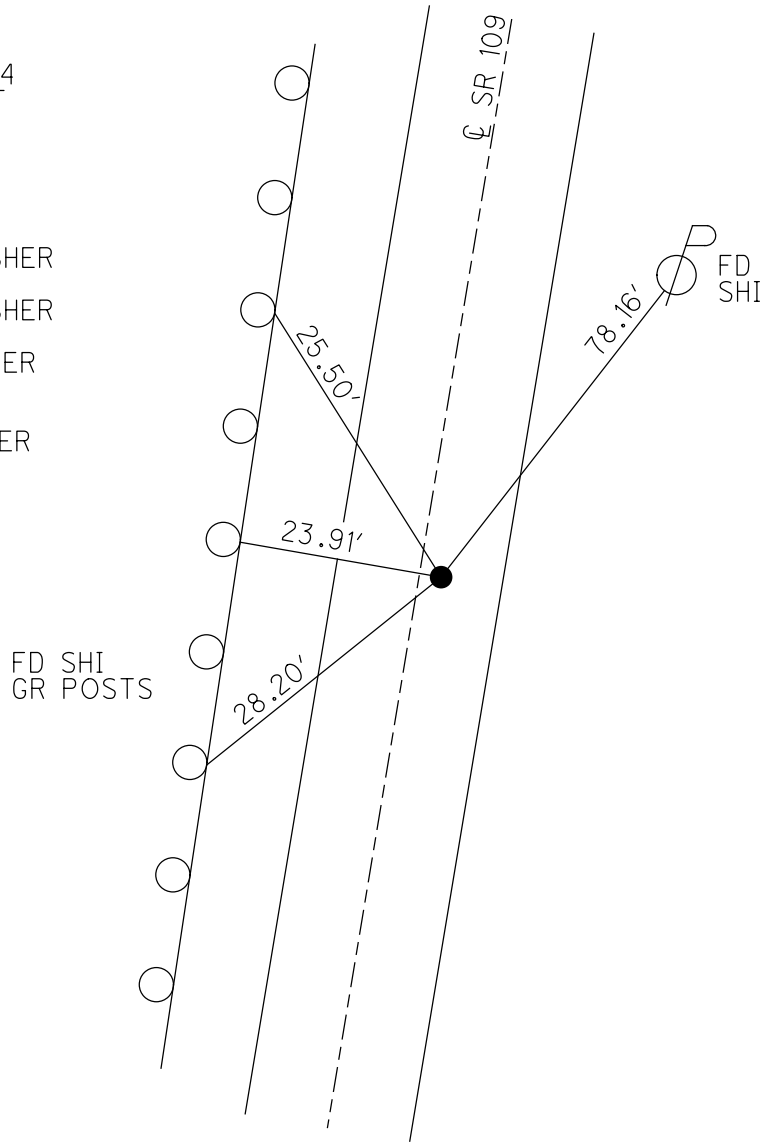
GEOID: 2018

GRID: NORTHING: 707135.124

EASTING: 1547985.971



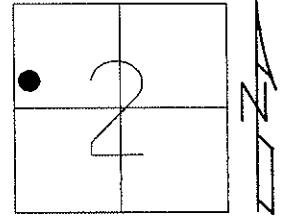
RECORD: P.I.
 STA 515+40.04
 $\Delta = 20^{\circ}27'$ LT
 D=10'
 T=122.52'
 L=245.00'
 E=1.31'
 Rc=5729.58'
 SET P.K./WASHER
 10/01/90, MB
 SET P.K./WASHER
 11/20/96
 FD P.K./WASHER
 6/12/12
 3/04/13, MC
 FD MAG/WASHER
 REFA25
 4/23/21, JFO
 8/26/21, JFO



O.D.O.T. DISTRICT 2 SURVEY OFFICE (USE ONLY)

| | | |
|------------------------|---------------------------|-----------------------------|
| PERSONNEL | REFERENCE NO. <u>25-B</u> | SHEET <u>9</u> OF <u>35</u> |
| NOTES <u>HUSS</u> | DATE <u>06-12-12</u> | ROUTE <u>SR 109</u> |
| H.C. <u>HUSS</u> | WEATHER <u>FAIR</u> | COUNTY <u>FULTON</u> |
| R.C. <u>CANTERBURY</u> | TEMP. <u>76°</u> | TOWNSHIP <u>PIKE</u> |
| <u>COUTCHER</u> | | SECTION <u>2</u> |
| | | T <u>7</u> N R <u>7</u> E |

TYPE MONUMENT PK/WASHER
 ON SURFACE - BELOW ON
 LEFT - Q PAV'T - RIGHT 2.6'
7.0' TO RT EDGE PAVEMENT
 S.L.M. 516+73

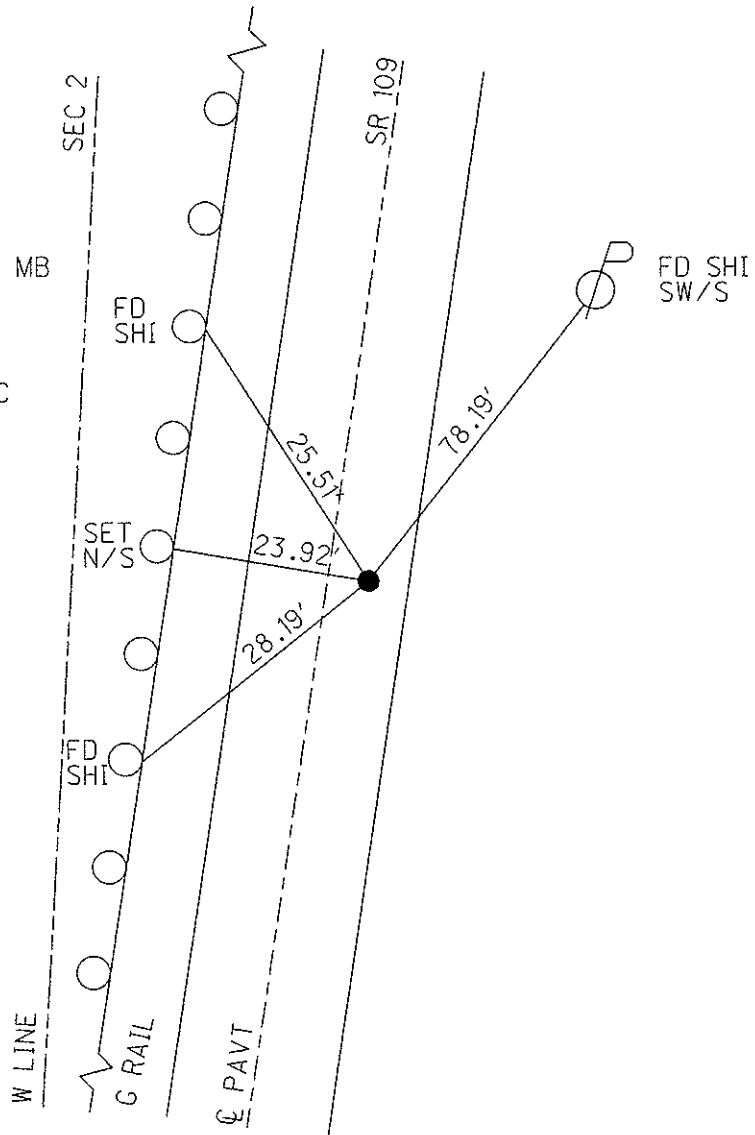


Grid: Northing: 707135.108 Easting: 1547985.928

RECORD:
 PI STA 515+40.04
 $\Delta=20^{\circ}27'$ LT
 D=10
 T=122.52'
 L=245.00'
 E=1.31
 Rc=5729.58'

10-01-90 SET PK/WASHER, MB
 11-20-96 SET PK/WASHER
 IN LEVELING COURSE

06-12-12 GPS REF B25
 03-04-13 GPS FIN B25, MC



O.D.O.T. DISTRICT 2 SURVEY OFFICE

PERSONNEL

REFERENCE NO. 25-2A

SHEET 7 OF 28

NOTES CANTERBURY

H.C. Rousos

R.C. LOEHRKE

DATE 8-20-96

WEATHER FAIR / BREEZY

TEMP. +85°

ROUTE 109

COUNTY FULTON

TOWNSHIP PIKE

SECTION 2

T 7 N R 7 E

Set PK. / WASHER
10-6-97
C.L.

TYPE MONUMENT SM. R.R. SPIKE

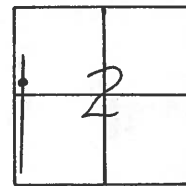
ON SURFACE - ~~BELOW~~ YES

~~LEFT~~ = C PAV'T. - RIGHT 0.96

1.87 TO RT EDGE PAVEMENT

S.L.M. 15+719.540

515+73

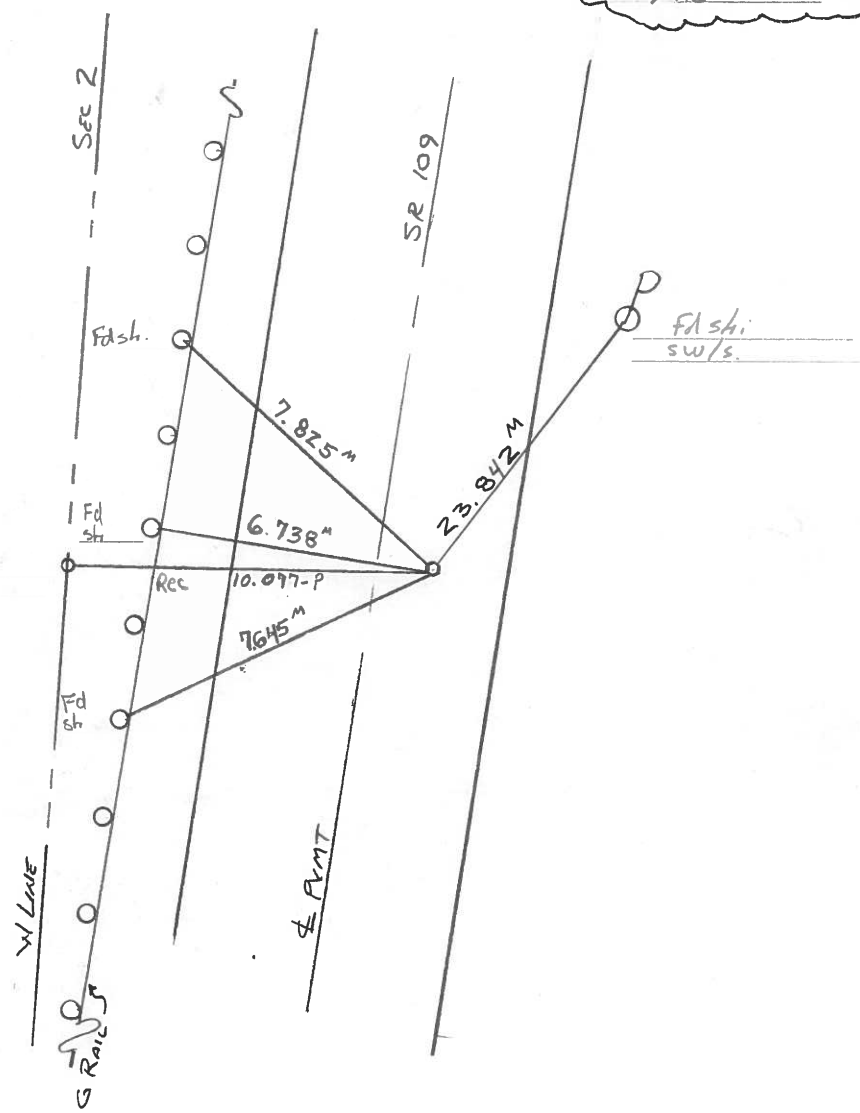


RECORD
PI STA 515-40.04
 $\Delta = 20^\circ 27' LT$
 $D = 10$
 $I = 122.52'$
 $E = 295.00'$
 $E = 1.31$
 $R = 5729.58'$

SET PK. / WASHER
10-1-90
MB

Fd $\frac{3}{4}$ " I. Pipe
4 DOWN

SET PK/WASHER IN LEVELING
COURSE 11/20/96.
FAIR
+28°F



O.D.O.T. DISTRICT 2 SURVEY OFFICE

PERSONNEL _____

REFERENCE NO. 25-A

SHEET _____ OF _____

NOTES BARNHISEL

H.C. _____

DATE 8-31-90

ROUTE 109

R.C. HOFFMAN

WEATHER Clear

COUNTY Fulton

TEMP. +72°

TOWNSHIP PIKE

SECTION 2

T 7 N R 7 E

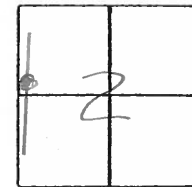
TYPE MONUMENT Sm RR Spk

ON SURFACE - BELOW yes

LEFT - & PAV'T. - RIGHT 2.9

6.6 TO RT EDGE PAVEMENT

S.L.M. 515+71



Record

P.I. STA: 515+40.04

$\Delta = 20^\circ - 27' \text{ LT}$

$D = 1^\circ$

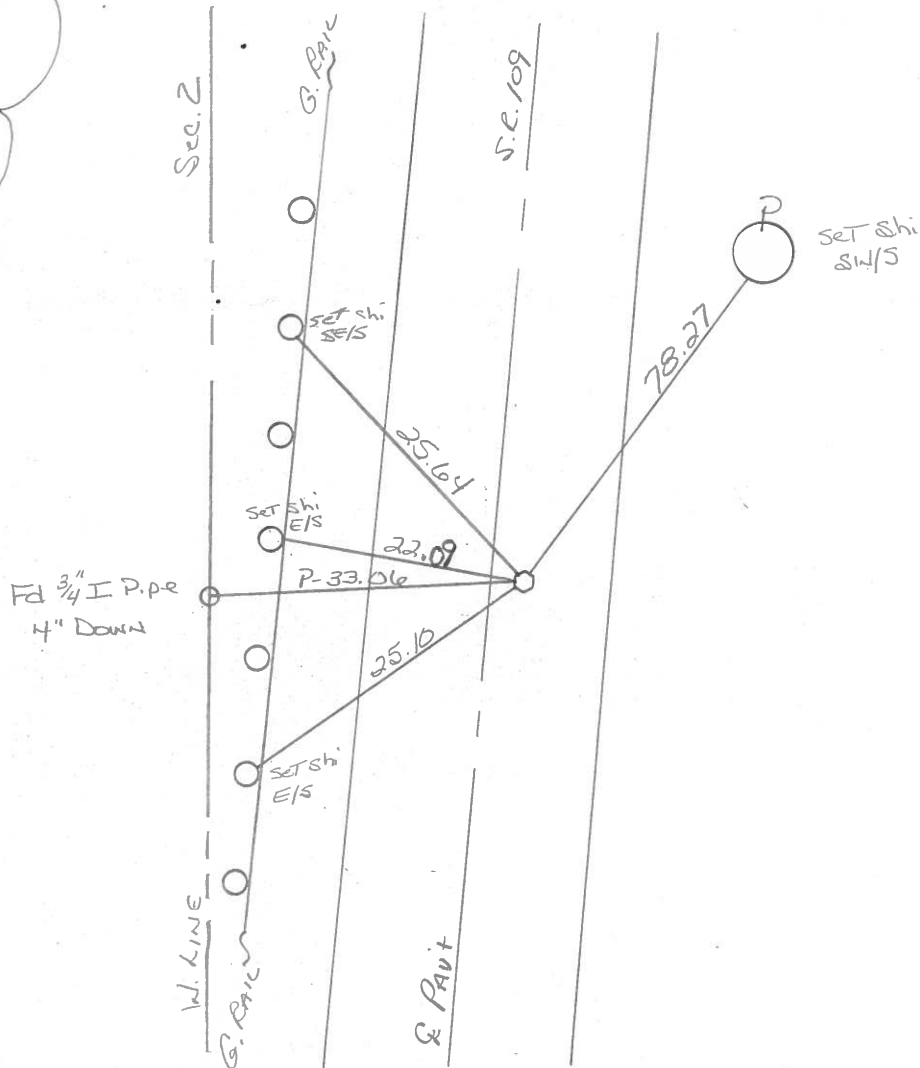
$T = 122.52'$

$L = 245.00'$

$E = 1.31$

$R = 5729.58'$

Set P.K. & Washee
10-1-90
MB



O.D.O.T. DISTRICT 2 SURVEY OFFICE

SHEET 4 OF

County Fulton S.R. 109

Date 11 April 84

Township PIKE

Weather Fair

Section 2

Temp. 48°

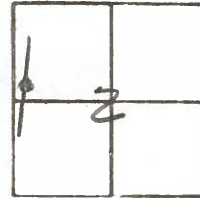
T N, R E

Personnel I. Stone

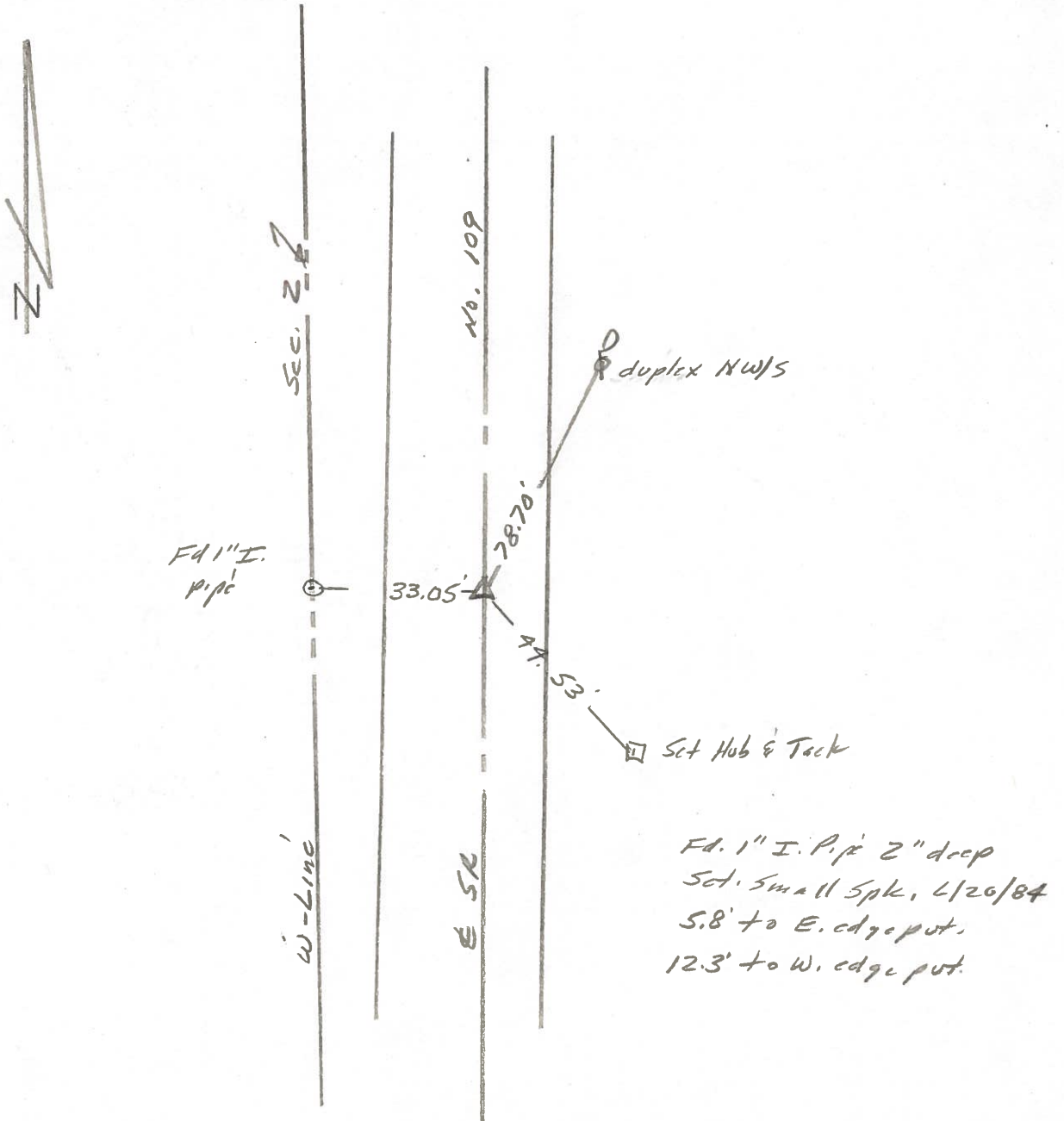
P. Neuser

R. Michalok

D. Curtis



REF. No. 25-A



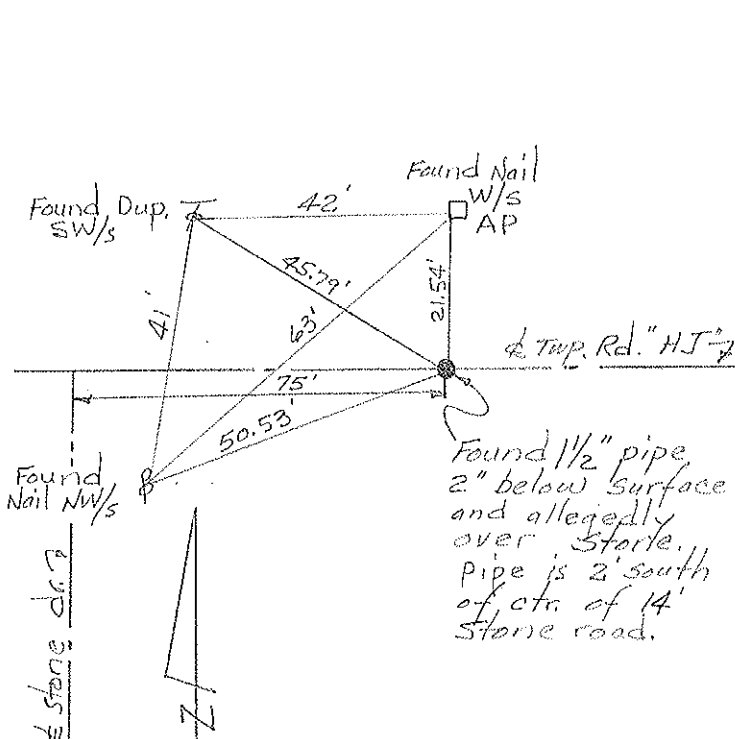
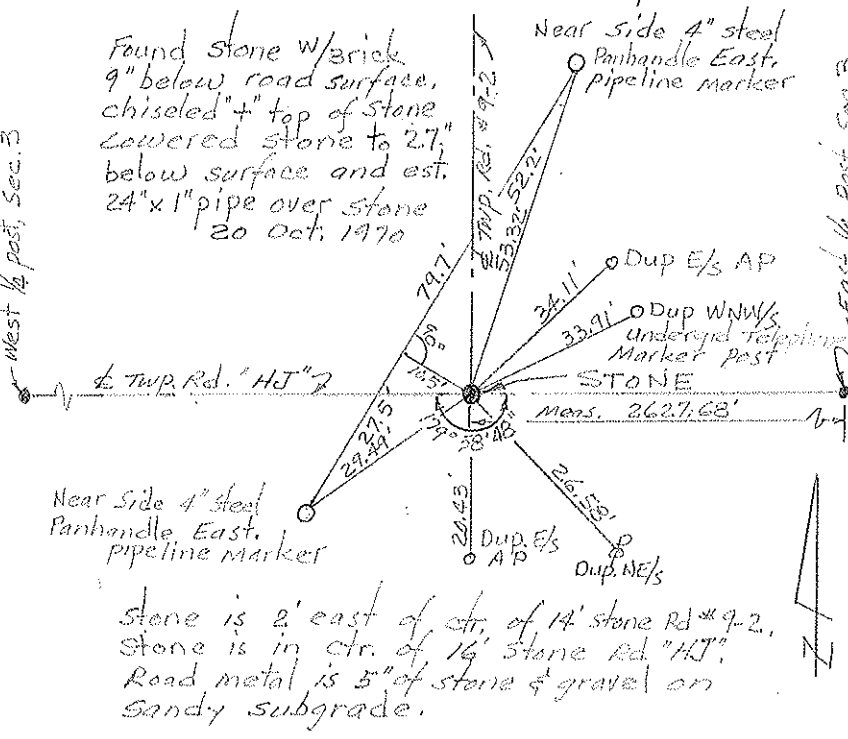
| PERSONNEL | TITLE | PERSONNEL | TITLE |
|------------------|-------|-----------|-------|
| <u>Red Beach</u> | | | |
| <u>Newcomb</u> | | | |
| <u>Knape</u> | | | |
| <u>Wise</u> | | | |

COUNTY Fulton DATE Oct. 1970
 S. R. 109 WEATHER _____
 SEC. Pike Twp TEMP. _____

DESCRIPTION CONTROL POINTS JOB NO. _____

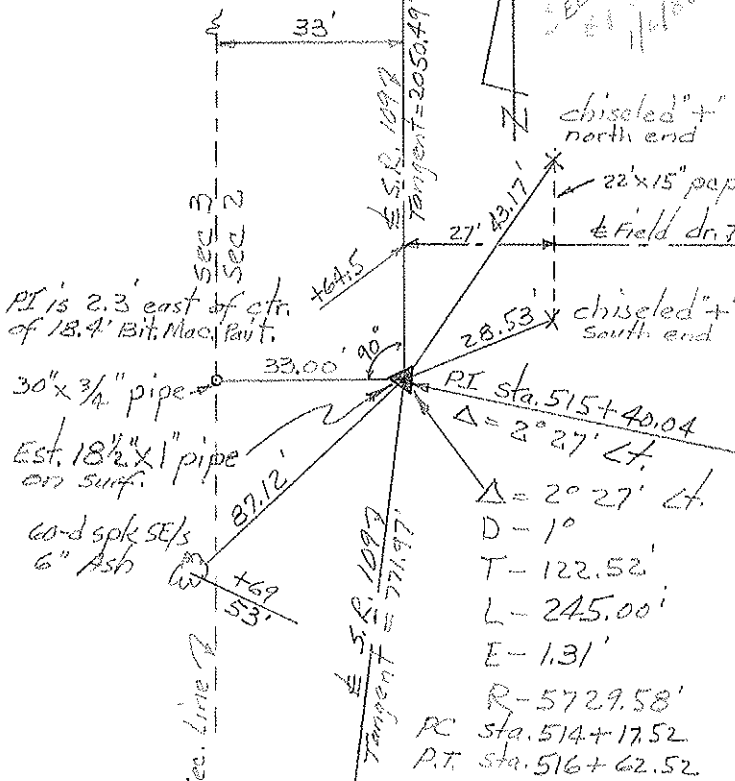
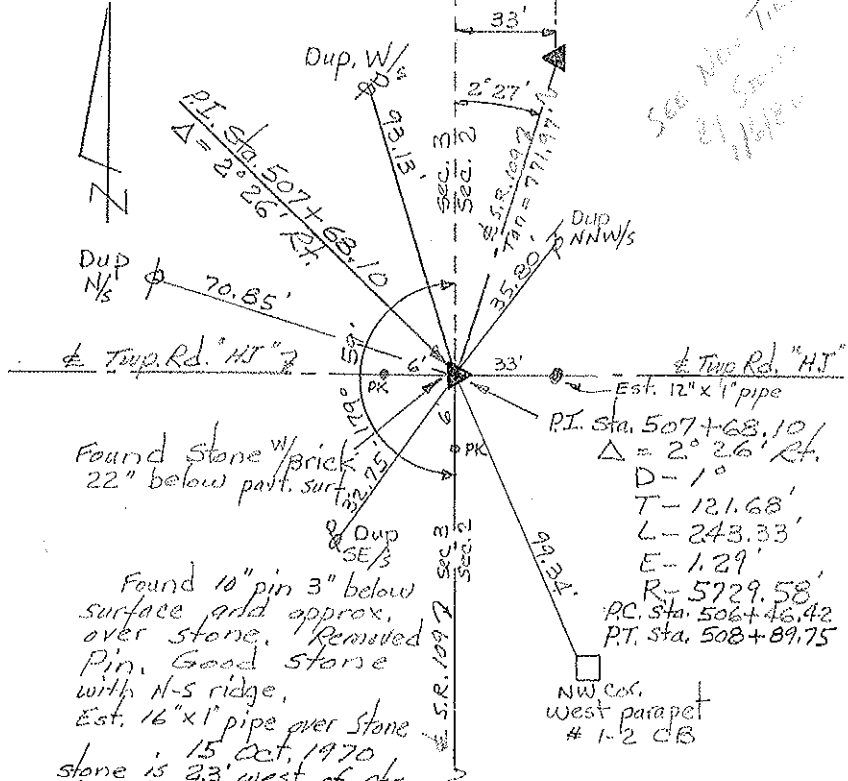
ctr. Post Stone, Sec. 3, Pike Twp T-7-N

ctr. Post, Sec. 2, Pike Twp. T-7-N



W 1/4 Post Stone, Sec. 2, Pike Twp. T-7-N
 E 1/4 Post Stone, Sec. 3, Pike Twp. T-7-N

PI sta. 515 + 40.04



PERSONNEL TITLE PERSONNEL TITLE

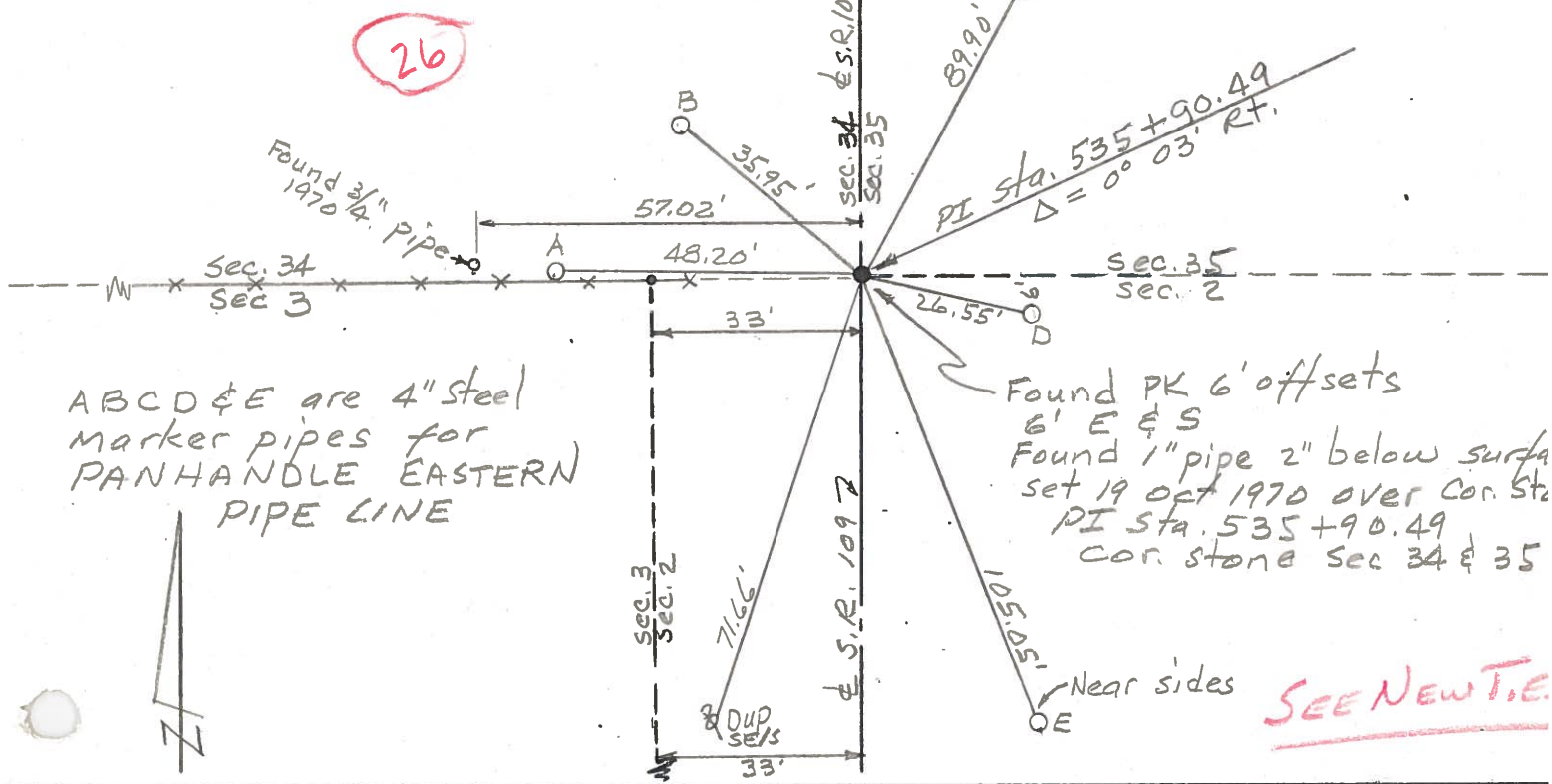
Red Beach
W. Knappe

COUNTY Fulton DATE JAN-Feb 1977

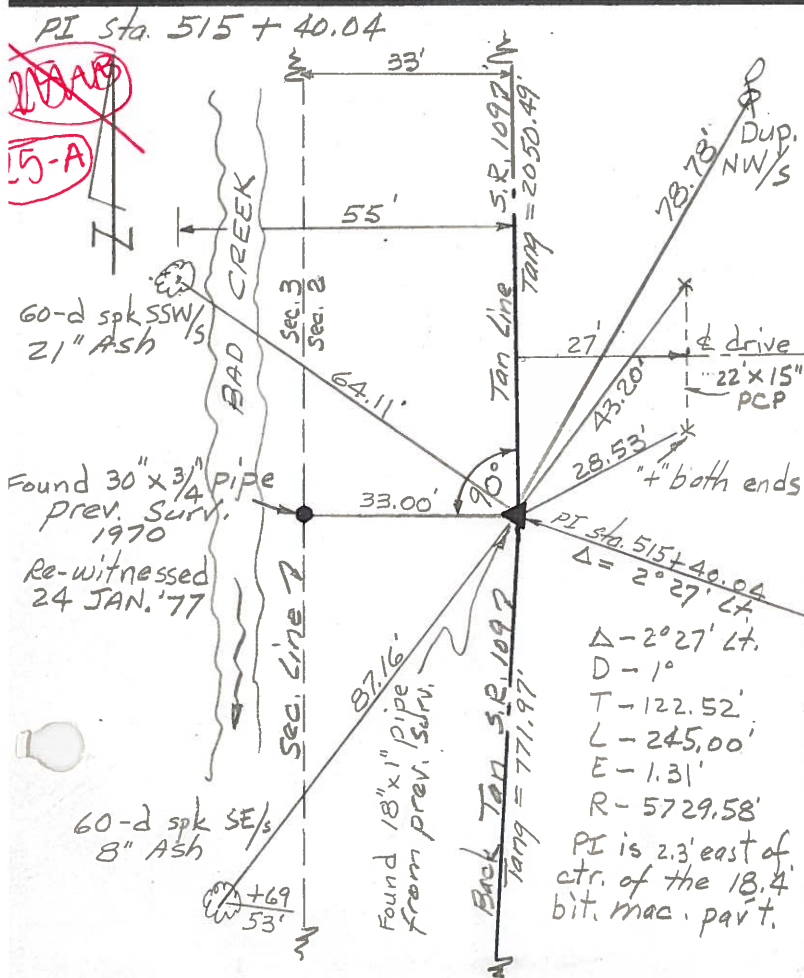
S. R. 109 WEATHER _____

SEC. PIKE TEMP. _____

DESCRIPTION CONTROL POINTS JOB NO. _____



ABCD & E are 4" steel marker pipes for PANHANDLE EASTERN PIPE LINE



~~27-A~~
15-A

27



SEE NEW TIES

