

O.D.O.T. DISTRICT 2 SURVEY OFFICE (USE ONLY)

PERSONNEL

REFERENCE NO. 28

SHEET 11 OF 35

NOTES RHOADES
 H.C. O'DONNELL
 R.C. RHOADES

DATE 4/23/21
 WEATHER CLOUDY
 TEMP. 46°

ROUTE SR 109
 COUNTY FULTON
 TOWNSHIP PIKE
 SECTION 35
 T 8 N R 7 E

DWG BY NIESE PID PAVE TRAIN

TYPE MONUMENT MAG/WASHER

ON SURFACE - ~~BELOW~~ ON

OFFSET 0.8' LT : ~~RT~~

9.3' TO LT EDGE PAVEMENT

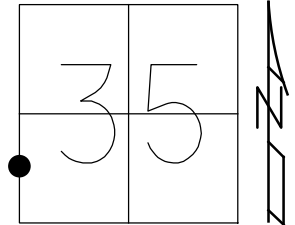
STATION: 549+91.55

HORZ. DATUM: NAD83(2011)

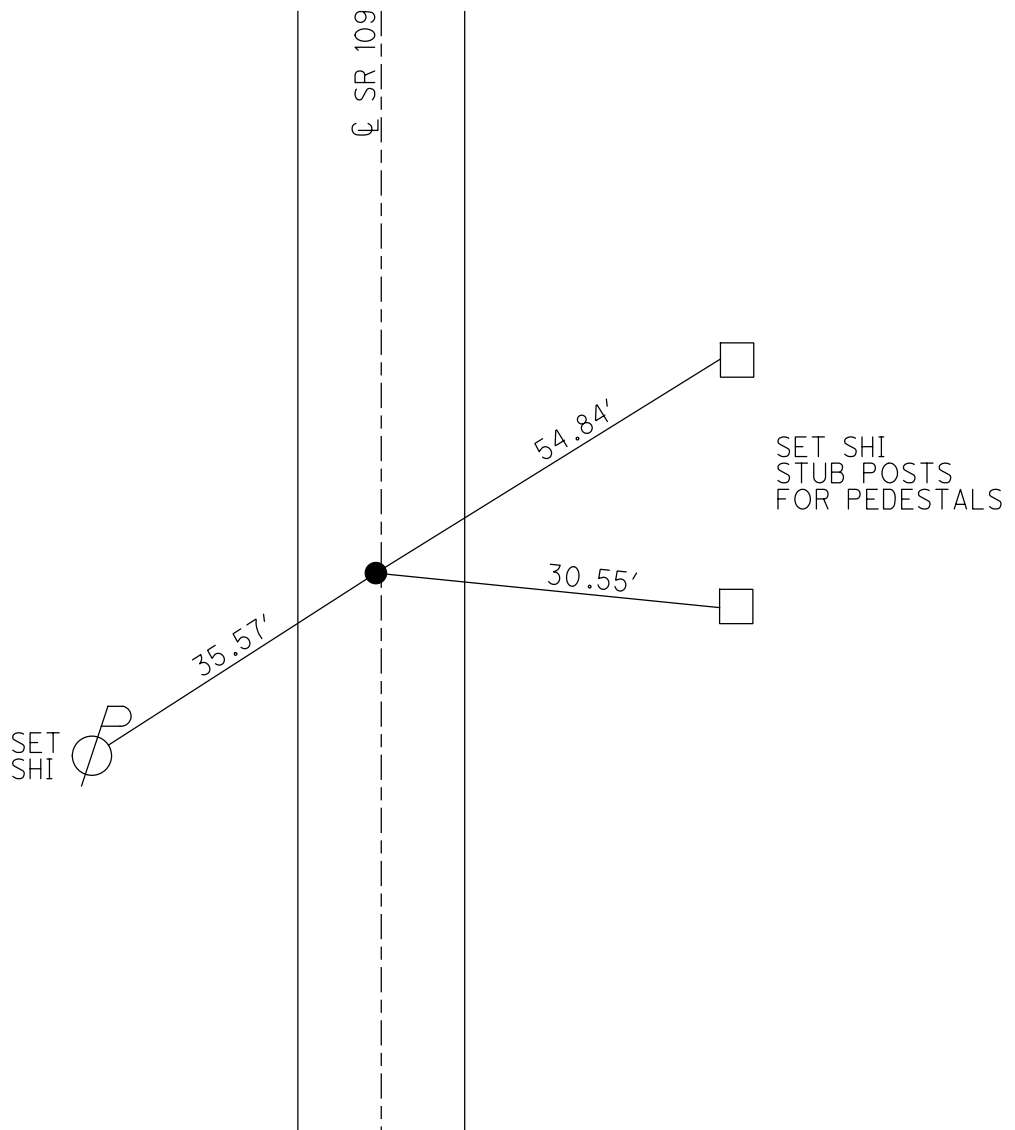
GEOID: 2018

GRID: NORTHING: 710561.775

EASTING: 1548048.826



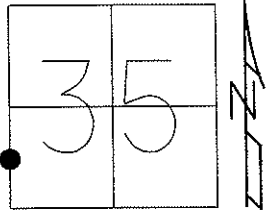
RECORD:
 SET P.K./WASHER
 11/20/96, MRC
 FD P.K./WASHER
 6/12/12, SAH
 SET MAG/WASHER
 2/28/13, MC
 FD MAG/WASHER
 3/5/13, MC
 REF28
 4/23/21, JFO
 8/26/21, JFO



O.D.O.T. DISTRICT 2 SURVEY OFFICE (USE ONLY)

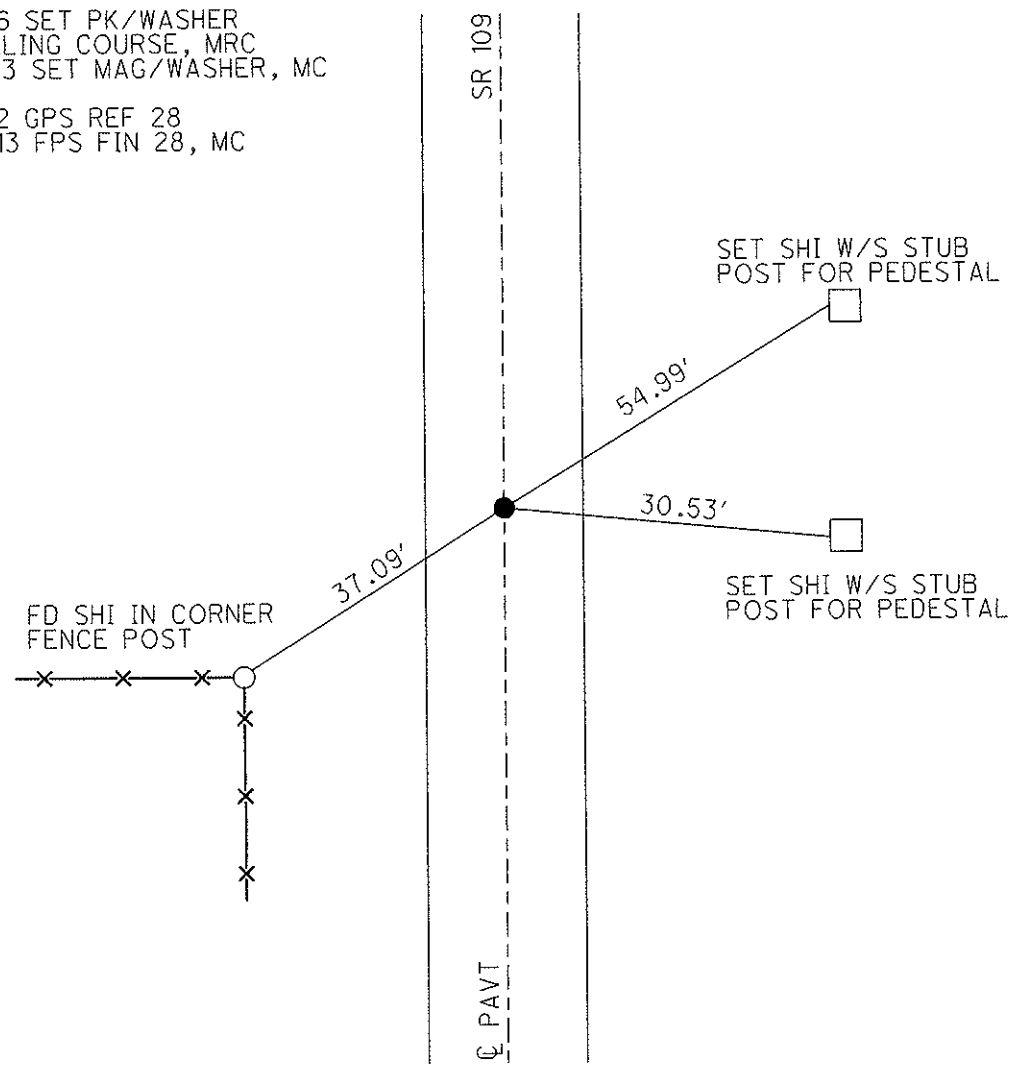
PERSONNEL	REFERENCE NO. <u>28</u>	SHEET <u>12</u> OF <u>35</u>
NOTES <u>HUSS</u>	DATE <u>06-12-12</u>	ROUTE <u>SR 109</u>
H.C. <u>HUSS</u>	WEATHER <u>FAIR</u>	COUNTY <u>FULTON</u>
R.C. <u>CANTERBURY</u>	TEMP. <u>74°</u>	TOWNSHIP <u>PIKE</u>
<u>COUTCHER</u>		SECTION <u>35</u>
		T <u>8</u> N R <u>7</u> E

TYPE MONUMENT PK/WASHER
 ON SURFACE - BELOW ON
 LEFT - Q PAV'T - RIGHT 0.8'
9.3' TO LT EDGE PAVEMENT
 S.L.M. 549+95



Grid: Northing: 710561.764 Easting: 1548048.763

11-20-96 SET PK/WASHER
 IN LEVELING COURSE, MRC
 02-28-13 SET MAG/WASHER, MC
 06-12-12 GPS REF 28
 03-05-13 FPS FIN 28, MC



O.D.O.T. DISTRICT 2 SURVEY OFFICE

PERSONNEL

REFERENCE NO. 28

SHEET 10 OF 28

NOTES CANTERBURY

H.C. ROUSOS

R.C. LOEHRKE

DATE 8-20-96

WEATHER FAIR

TEMP. +85°

ROUTE S.R. 109

COUNTY FULTON

TOWNSHIP PIKE

SECTION 35

T. 8 N. R. 7 E.

Reset 10-2-97
C.L.

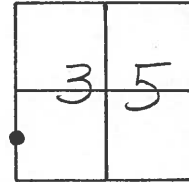
TYPE MONUMENT P.K. & WASHER

ON SURFACE - BELOW YES

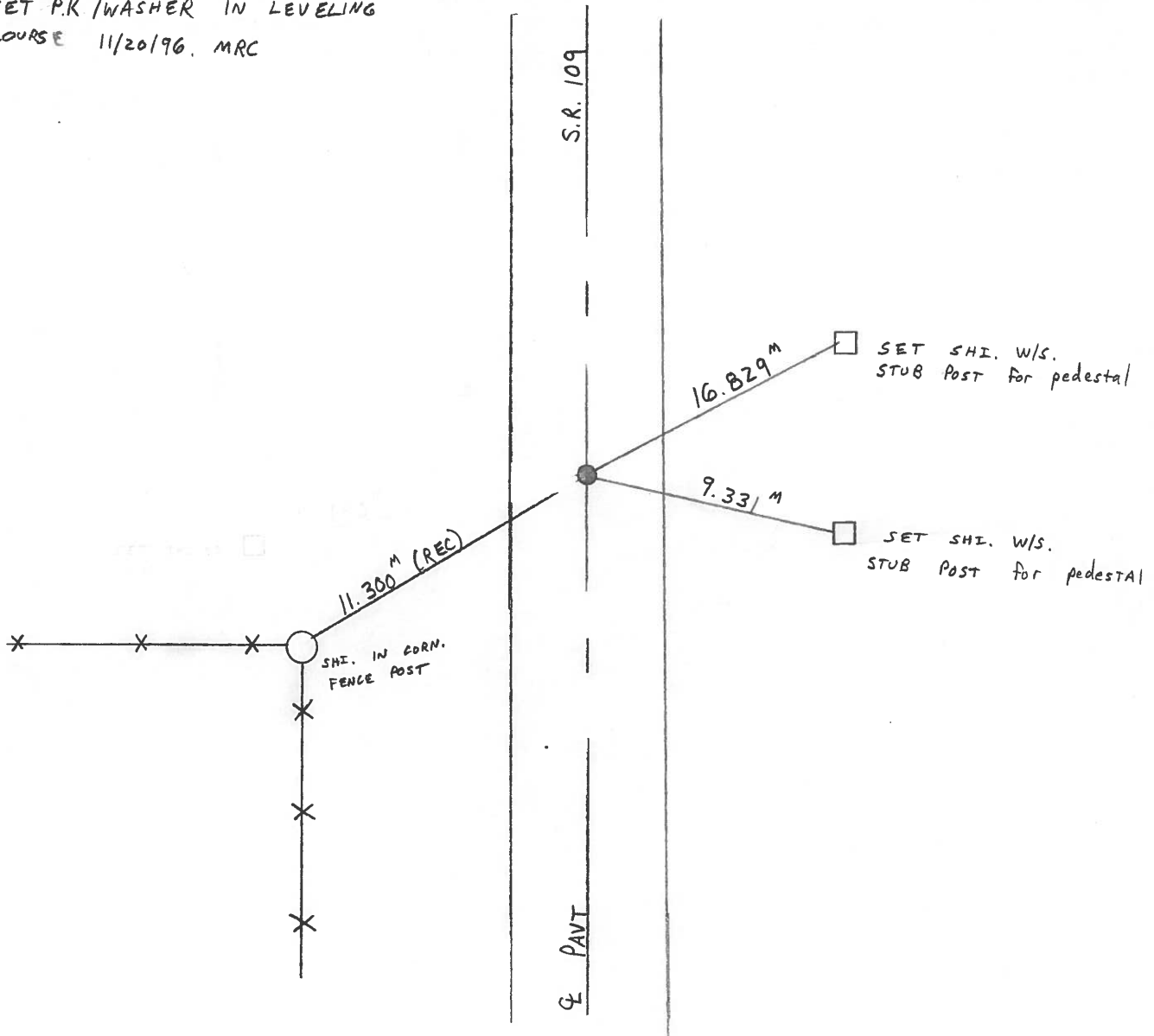
LEFT - Q PAV'T. - RIGHT O.2 LT &

Z.79 TO LT EDGE PAVEMENT

S.L.M. 16+759.690 (549+95)



SET P.K/WASHER IN LEVELING
COURSE 11/20/96. MRC



O.D.O.T. DISTRICT 2 SURVEY OFFICE

PERSONNEL _____

REFERENCE NO. 28

SHEET _____ OF _____

NOTES BAENHISEL

H.C. " "

R.C. HOFFMAN

DATE 8-31-90

WEATHER Clear

TEMP. +75°

ROUTE 109

COUNTY Fulton

TOWNSHIP Pike

SECTION 35

T 8 N R 7 E

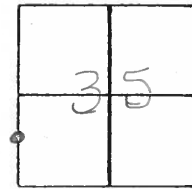
TYPE MONUMENT P.K. NAIL

ON SURFACE - BELOW yes

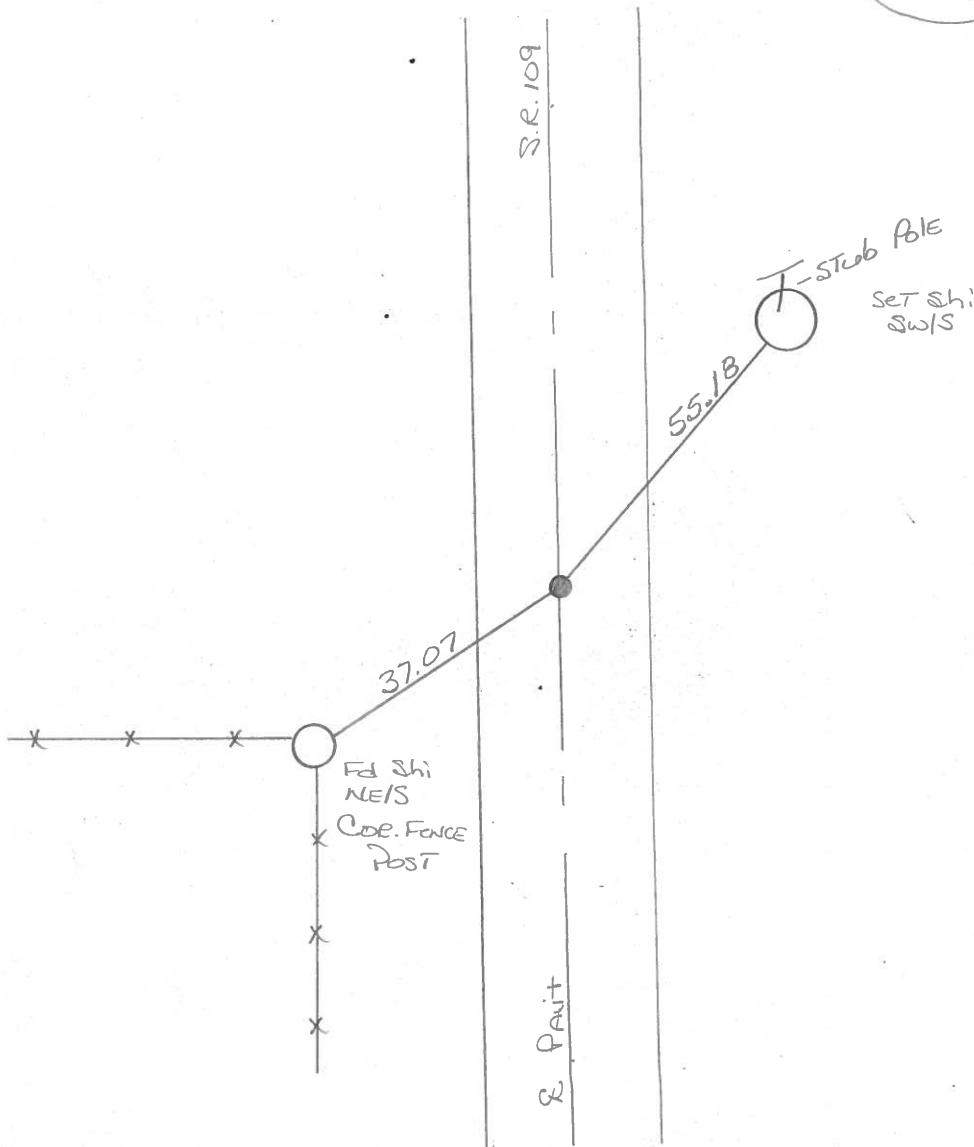
LEFT - & PAV'T. - RIGHT yes

9.6 TO RT EDGE PAVEMENT

S.L.M. 549+95



Set P.K. & Washer
10-1-90
mB



County Fulton S.R. 109

Date 11 April 84

Township PIKE

Weather Fair

Section 35

Temp. 49°

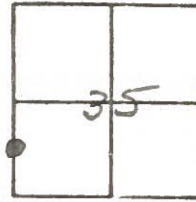
T N, R E

Personnel I. Stone

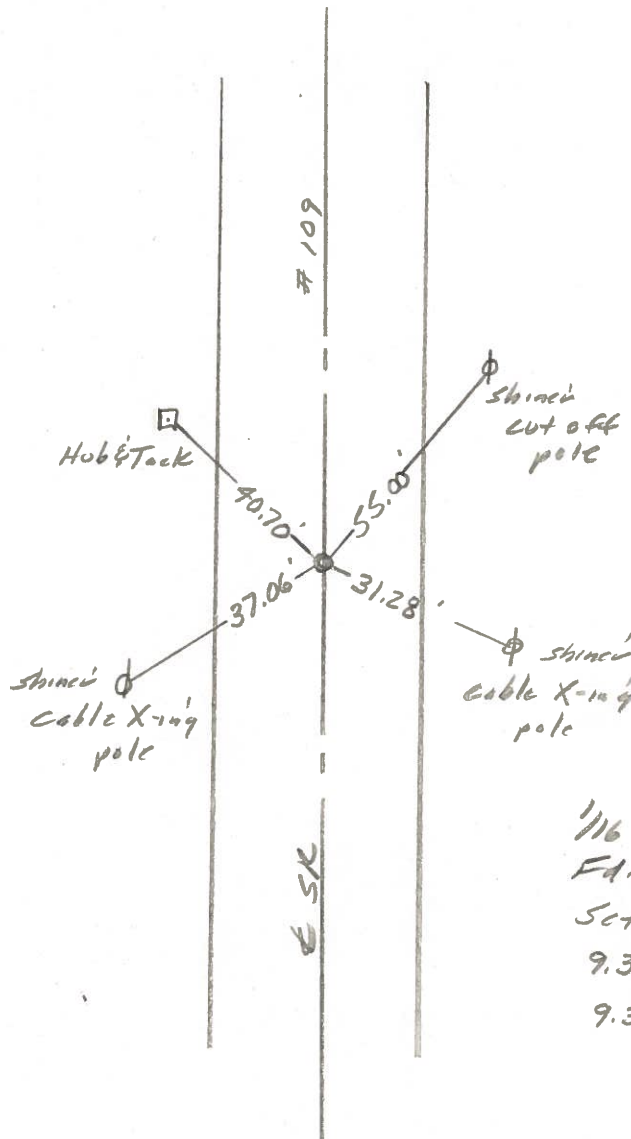
P. Neuser

R. Michalek

D. Curtis



REF. NO. 28



1/16 Cor. Sec. 35
 Ed. RR Spt. 1" deep
 Set PK Nail
 9.3' to E. edge put.
 9.3' to W. edge put.

28A

ROAD "8-1" + 1/4 1/4 Line

PERSONNEL	TITLE
Chris Stawley	Crew Chief
Justin Arnold	Road Man
Lee Tennyson	Road Man

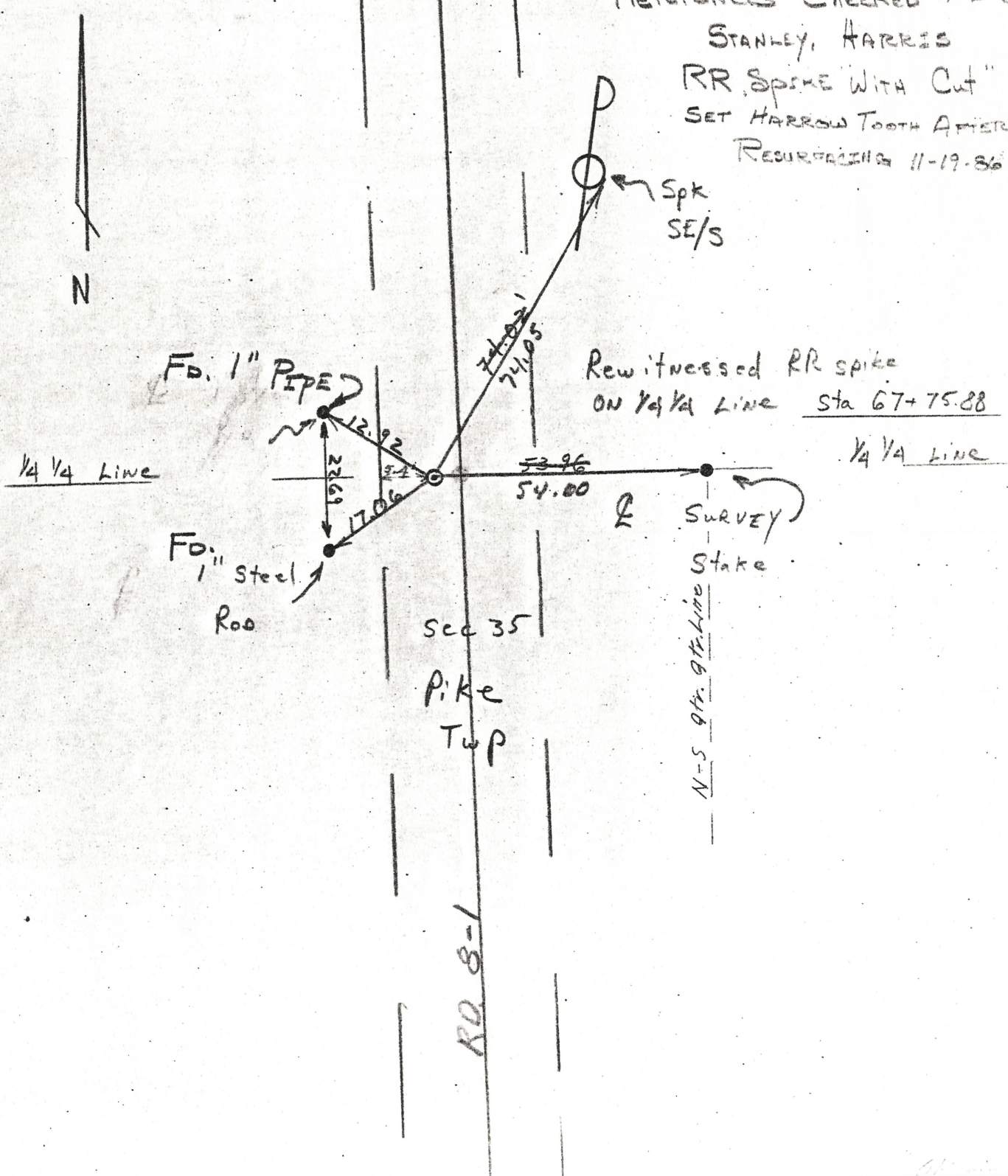
SEC. 35 T- 8-N R- 7-E

CORNER C.P. 1/4 1/4 Line TWP. Pike

DATE 5-1-80 WEATHER Sunny 60°

DESCRIPTION Rewitnessed RR spike on 1/4 1/4 Line Sta 67+75.88 on re-established Rd R/W E.

References Checked 4-2-80
 STANLEY, HARRIS
 RR Spike with Cut"
 SET HARROW TOOTH AFTER
 RESURFACING 11-19-80 CF



Rewitnessed RR spike ON 1/4 1/4 Line Sta 67+75.88

1/4 1/4 Line

Sec 35 Pike Twp

RD. 8-1

N-S 9th 9th Line

PERSONNEL	TITLE	PERSONNEL	TITLE
Tomsic		Granata	
Neuzer			
Vanyo			
Boyle			

COUNTY FULTON DATE July-18-73
 S. R. 109 WEATHER clear
 SEC. _____ TEMP. 85°

DESCRIPTION MON. JOB NO. 024610

