

O.D.O.T. DISTRICT 2 SURVEY OFFICE (USE ONLY)

PERSONNEL

REFERENCE NO. 30 E

SHEET 18 OF 35

NOTES RHOADES DATE 4/26/21  
 H.C. O'DONNELL WEATHER CLOUDY  
 R.C. NIESE TEMP. 46°

ROUTE SR 109  
 COUNTY FULTON  
 TOWNSHIP PIKE  
 SECTION 10  
 T 10 S R 3 E

DWG BY NIESE PID PAVE TRAIN

TYPE MONUMENT MAG/WASHER

ON SURFACE - ~~BELOW~~ ON

OFFSET CL PAVEMENT 4.2' ~~±~~ : RT

6.5' TO RT EDGE PAVEMENT

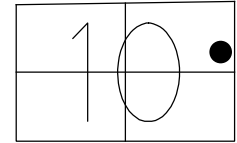
STATION: 611+82.25

HORZ.DATUM: NAD83(2011)

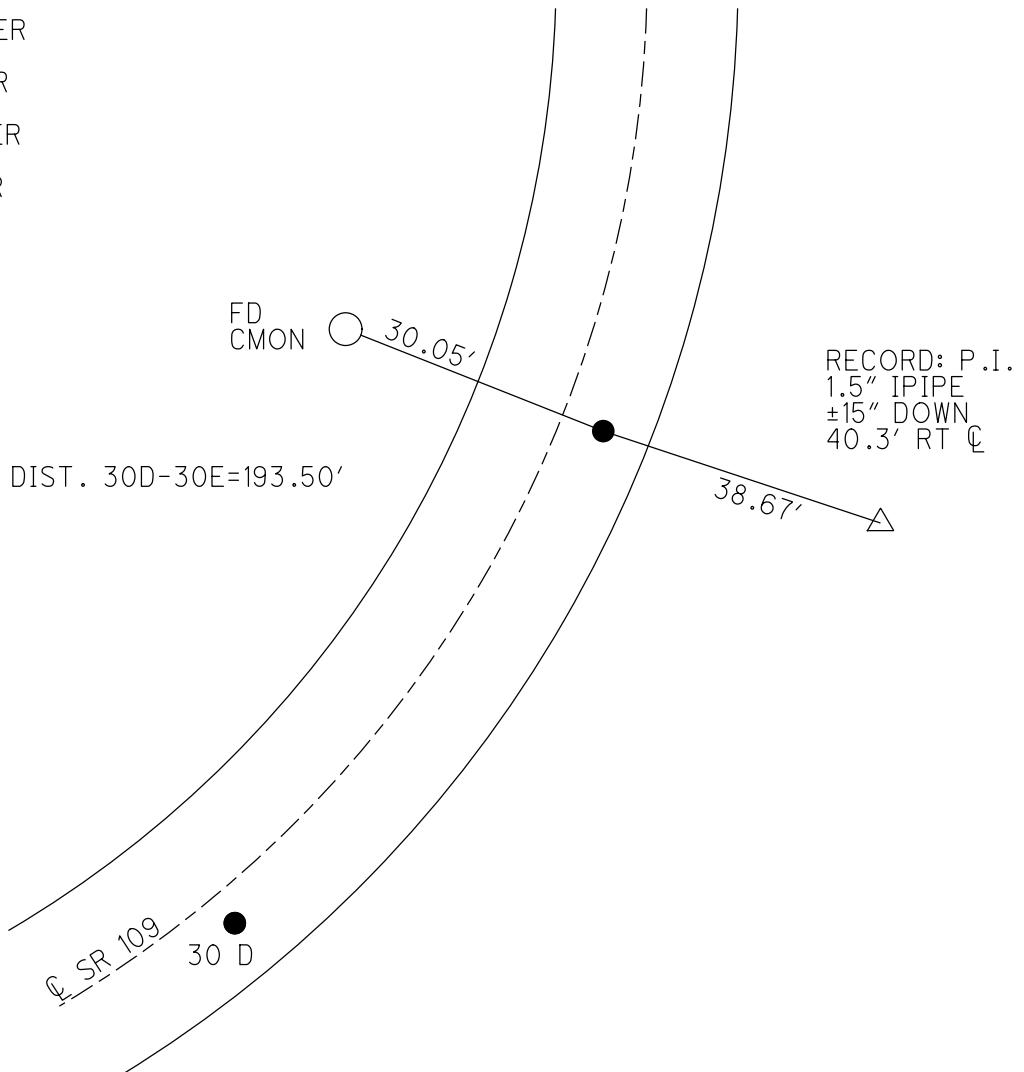
GEOID: 2018

GRID: NORTHING: 716475.857

EASTING: 1548949.537



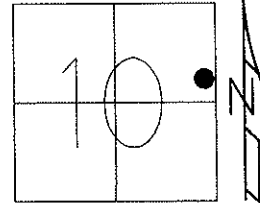
RECORD:  
 SET P.K./WASHER  
 11/20/96  
 FD P.K./WASHER  
 6/15/12, MC  
 SET MAG/WASHER  
 3/7/13  
 FD MAG/WASHER  
 REFE30  
 4/26/21, JFO  
 8/26/21, JFO



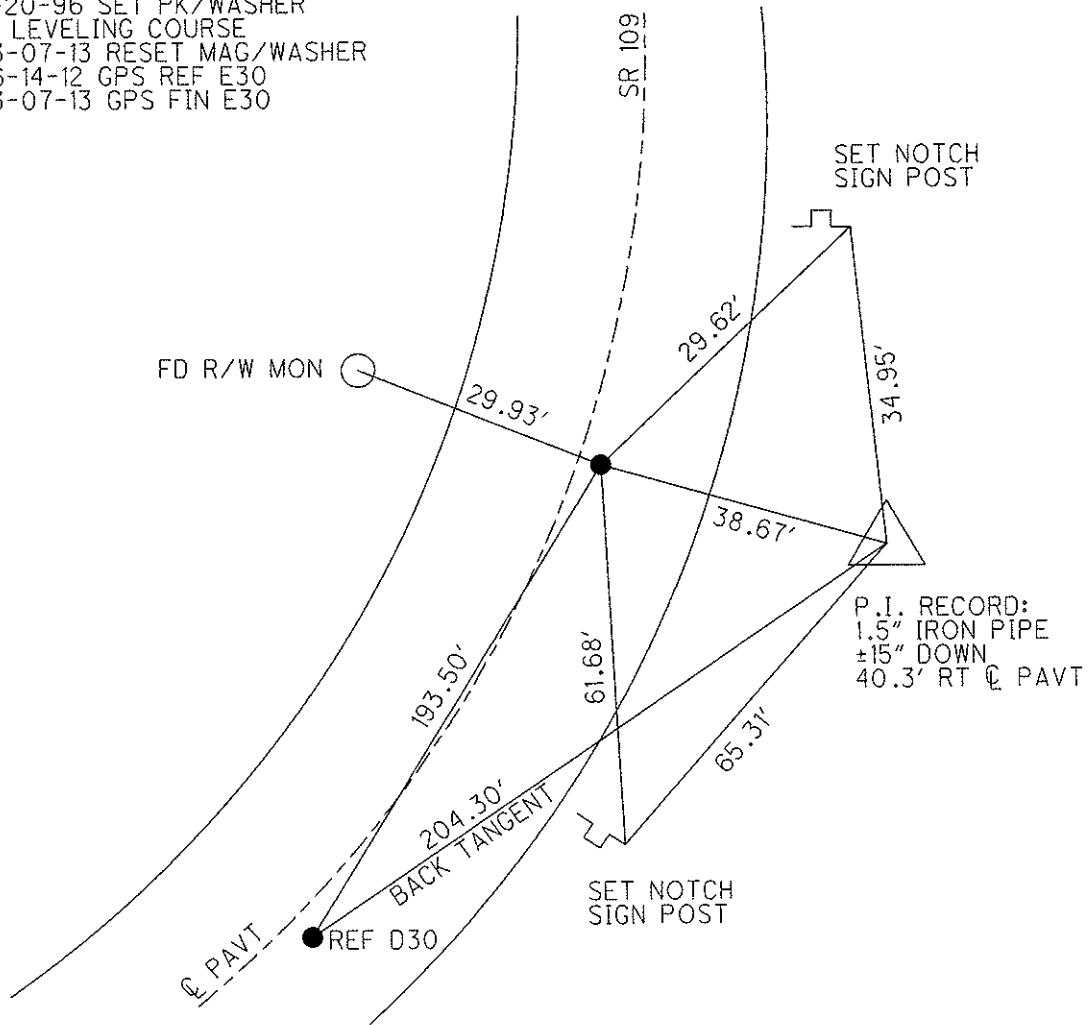
O.D.O.T. DISTRICT 2 SURVEY OFFICE (USE ONLY)

PERSONNEL	REFERENCE NO. <u>30-E</u>	SHEET <u>19</u> OF <u>35</u>
NOTES <u>CANTERBURY</u>	DATE <u>06-15-12</u>	ROUTE <u>SR 109</u>
H.C. <u>ROUSOS</u>	WEATHER <u>FAIR</u>	COUNTY <u>FULTON</u>
R.C. <u>CANTERBURY</u>	TEMP. <u>75°</u>	TOWNSHIP <u>PIKE</u>
<u>HARBAUGH</u>		SECTION <u>10</u>
<u>COUTCHER</u>		T <u>10</u> S R <u>3</u> E

TYPE MONUMENT \_\_\_\_\_ PK/WASHER \_\_\_\_\_  
 ON SURFACE - BELOW \_\_\_\_\_ ON \_\_\_\_\_  
 LEFT - ℄ PAV'T - RIGHT \_\_\_\_\_ 4.2' \_\_\_\_\_  
6.5' TO RT EDGE PAVEMENT \_\_\_\_\_  
 S.L.M. \_\_\_\_\_  
 Grid: Northing: 716475.850 Easting: 1548949.491



11-20-96 SET PK/WASHER  
 IN LEVELING COURSE  
 03-07-13 RESET MAG/WASHER  
 06-14-12 GPS REF E30  
 03-07-13 GPS FIN E30



# O.D.O.T. DISTRICT 2 SURVEY OFFICE

PERSONNEL

REFERENCE NO. 31

SHEET 16 OF 28

NOTES CANTERBURY

H.C. LOEHRKE

R.C. CANTERBURY

DATE 8-26-96

WEATHER FAIR

TEMP. +80°

ROUTE 109

COUNTY FULTON

TOWNSHIP PIKE

SECTION 10

T10 S R3 E

Set P.K./WASHER  
10-2-97  
C.L.

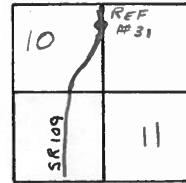
TYPE MONUMENT Sm. R.R. SPK.

ON SURFACE - BELOW YES

LEFT - C PAV'T. - RIGHT 1.24<sup>m</sup> RT &

867<sup>m</sup> TO RT EDGE PAVEMENT

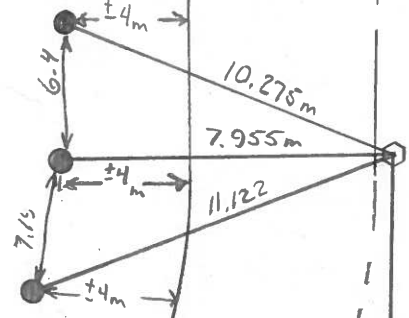
S.L.M. 18+639.5 +698 (613+81)



SET P.K.'S & WASHERS  
 10-1-95  
 M.B.

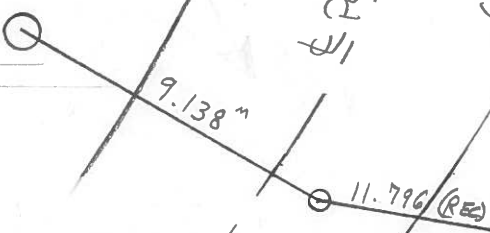
SET P.K./WASHER IN LEVELING  
 COURSE 11/20/96 M.R.C.  
 BOTH POINTS

Set I-Rods = ●



Point - SR109  
 62.271 (REC)

CONC. R/W MON.  
 TOP Brake but H612 to use.



Record: Fd V2 I-PIPE  
 38.1cm DEEP  
 RZ. CURVE/17.283m RT of & Pmt  
 Located 'Schonstedt' but didn't dig

# O.D.O.T. DISTRICT 2 SURVEY OFFICE

PERSONNEL

REFERENCE NO. 31

SHEET      OF     

NOTES BAENHISEL

H.C. " "

DATE 9-4-90

ROUTE 109

R.C. HOFFMAN

WEATHER clear

COUNTY Fulton

TEMP. +80°

TOWNSHIP Pike

SECTION 10

T.10 S.R.3E

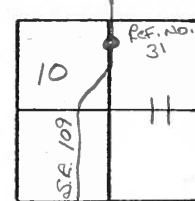
TYPE MONUMENT Sm. Re. Spk.

ON SURFACE - BELOW yes

LEFT - Q PAV'T. - RIGHT 1.9

8.4 TO RT EDGE PAVEMENT

S.L.M. 613+81

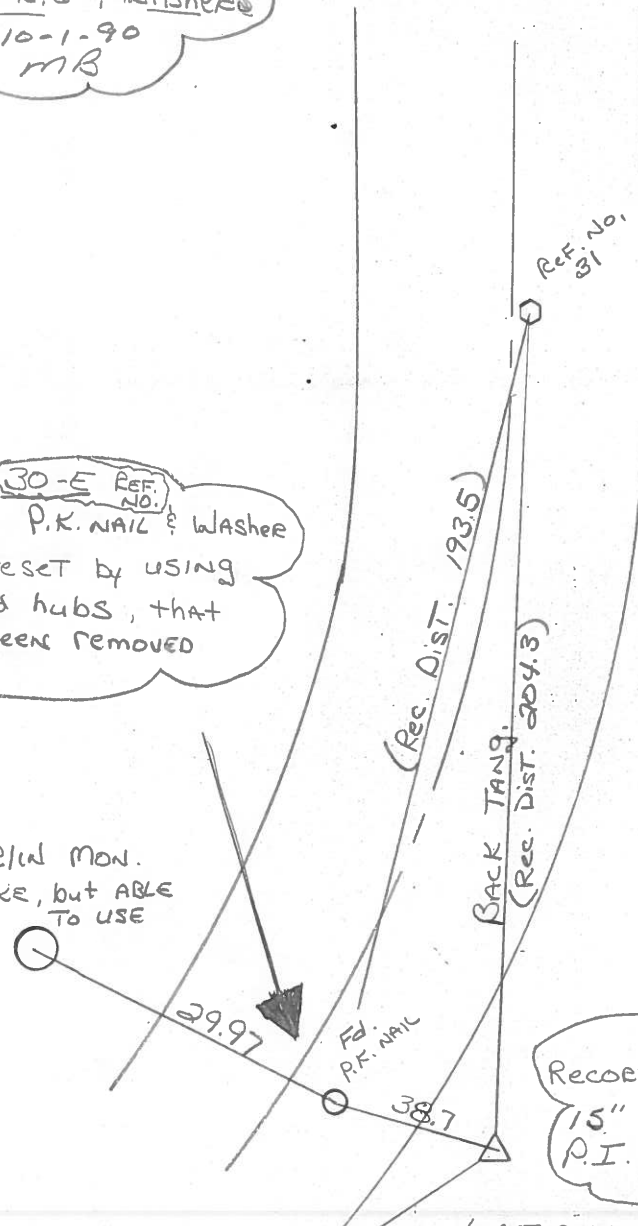


Set P.K.'s & Washers  
10-1-90  
MB

Note: Ref. No. 31  
Tacked  
Used Hubs to reset  
Control, but has  
been removed

30-E Ref. No.  
Note: P.K. Nail & Washer  
was reset by using  
tacked hubs, that  
has been removed

Conc. P.I. Mon.  
Top Broke, but ABLE  
TO USE



Record: Fd 1 1/2" I. Pipe  
15" deep  
P.I. CURVE

LOCATED WITH Schonstedt, but didn't dig.  
40.3 RT OF Q PAVT

County Fulton S.R. 109

Date 12 April 84

Township Pike

Weather Sunny

Section 11

Temp. 48°

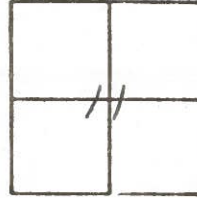
T N, R E

Personnel I. Stone

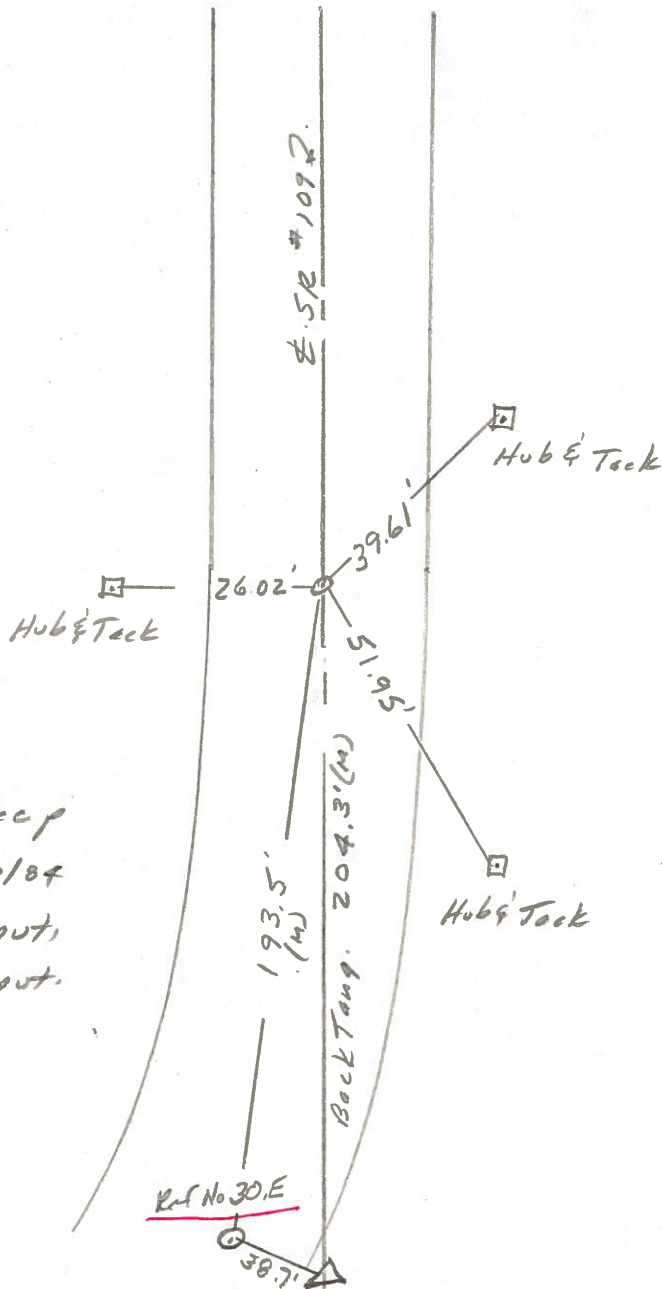
P. Neuse

R. Michalok

D. Curtis



REF. NO. 31

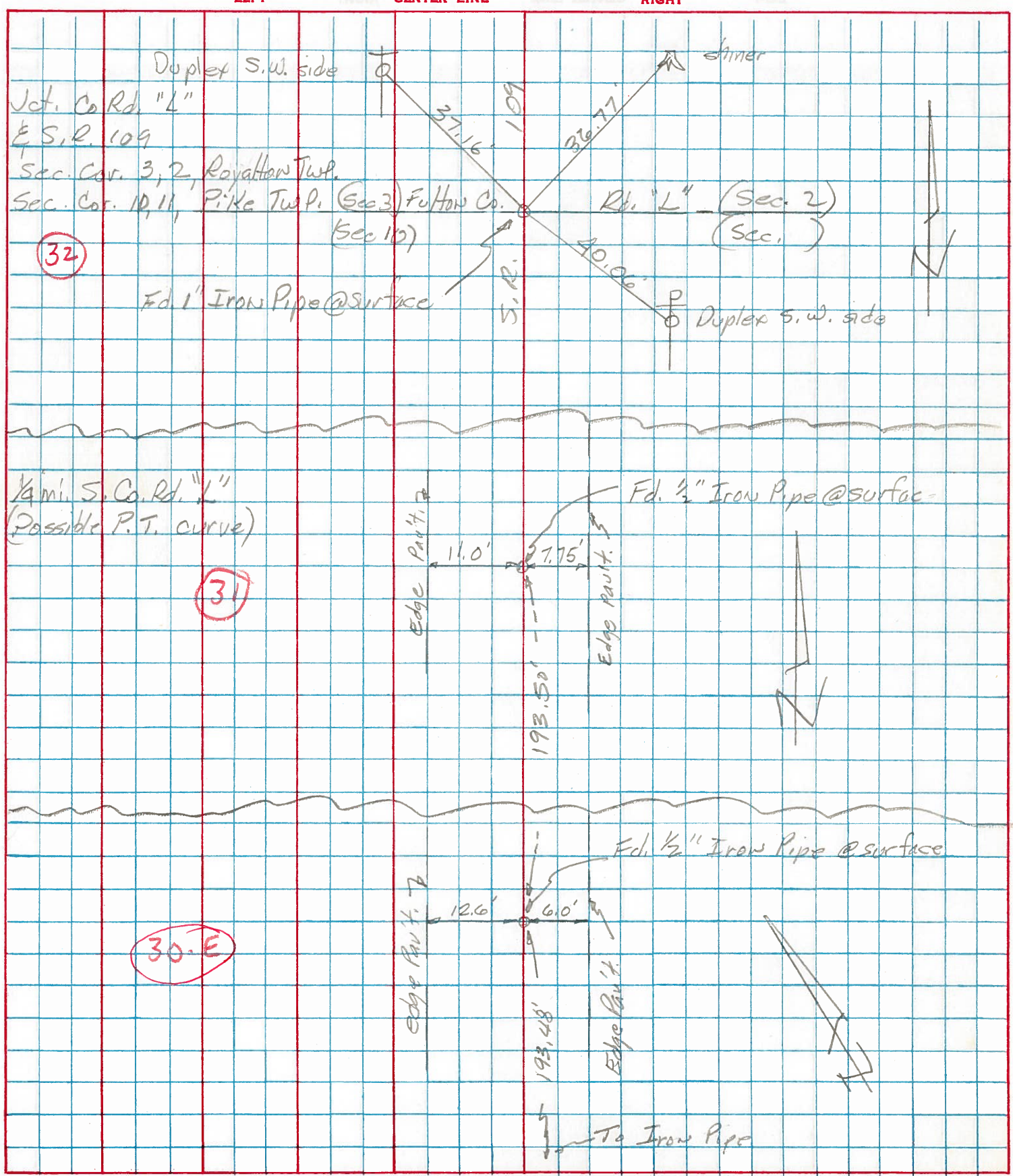


Ed 1/2" I pipe 2" deep  
Set Small Spk. 6/20/84  
8.2' to E. edge put,  
11.5' to W. edge put.

PERSONNEL	TITLE	PERSONNEL	TITLE
Tomsic			
Granata			
Vanpo			
Boyle			

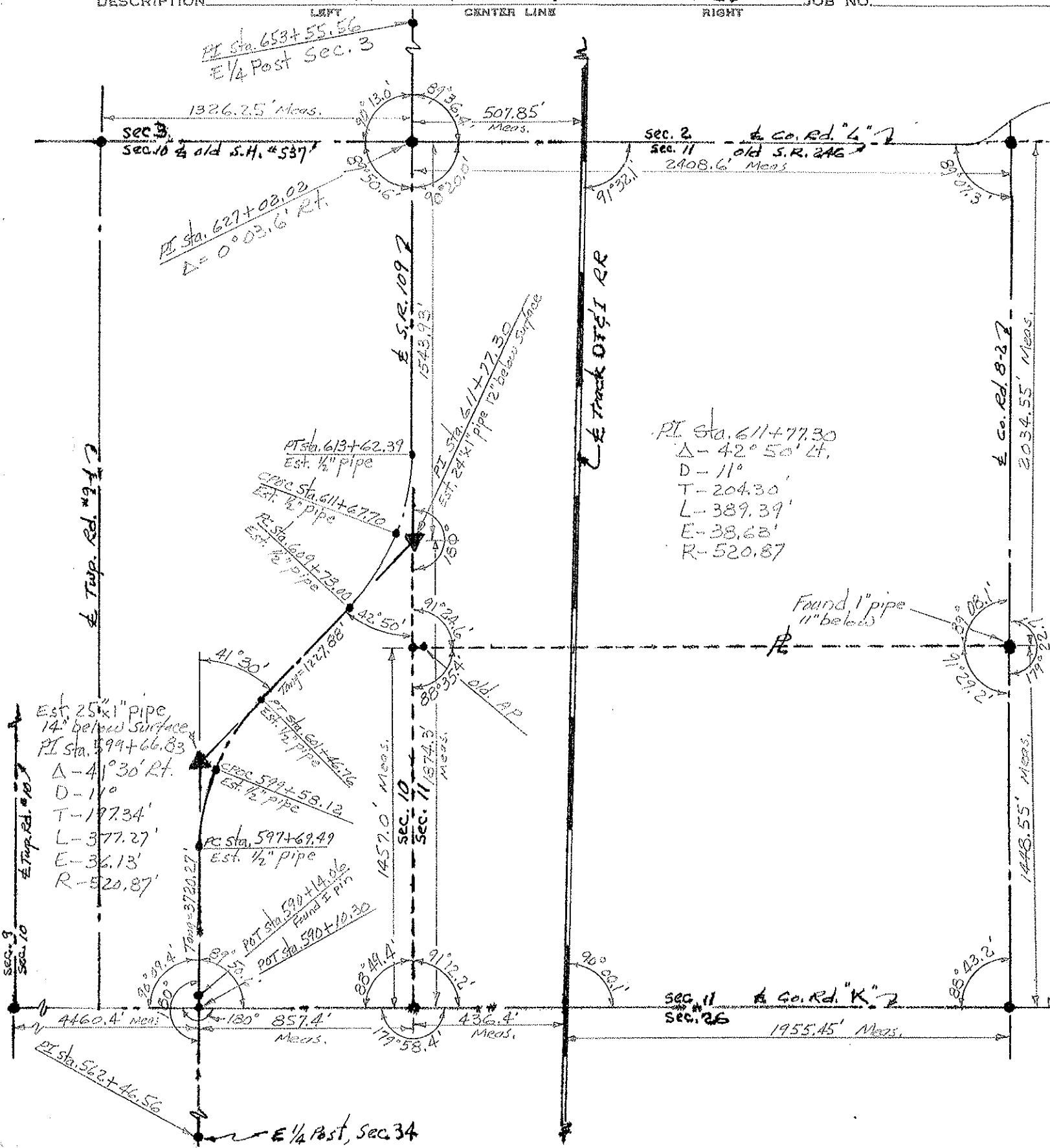
COUNTY Fulton DATE July 19, 1973  
 S. R. 109 WEATHER \_\_\_\_\_  
 SEC. PIKE TWP. TEMP. \_\_\_\_\_

DESCRIPTION \_\_\_\_\_ LEFT \_\_\_\_\_ CENTER LINE \_\_\_\_\_ RIGHT \_\_\_\_\_ JOB NO. \_\_\_\_\_





PERSONNEL	TITLE	PERSONNEL	TITLE	COUNTY	DATE
Red Beach				FULTON	Nov. 1970
Newcomb				S. R. 109	WEATHER
Knape				SEC. PIKE TWP.	TEMP.
Wise				DESCRIPTION ALIGNMENT & CONTROLS	JOB NO.



PERSONNEL	TITLE	PERSONNEL	TITLE	COUNTY	DATE
Red Beach				FULTON	Nov. 1970
Newcomb				S. R. 109	WEATHER
Knape				SEC. PIKE TWP.	TEMP
Wise					

CONTROL POINTS

