

O.D.O.T. DISTRICT 2 SURVEY OFFICE (USE ONLY)

PERSONNEL

REFERENCE NO. 36-A

SHEET 27 OF 35

NOTES HUSS

DATE 06-18-12

ROUTE SR 109

H.C. HUSS

WEATHER FAIR/BREEZY

COUNTY FULTON

R.C. CANTERBURY

TEMP. 68°

TOWNSHIP PIKE

HARBAUGH

SECTION 35

COUTCHER

T 9 S R 3 E

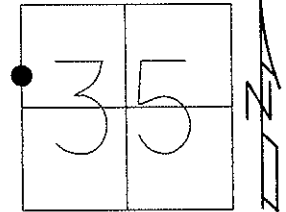
TYPE MONUMENT SHANK

ON SURFACE - BELOW 0.1'

LEFT - ϕ PAV'T - RIGHT 4.6'

6.1' TO RT EDGE PAVEMENT

S.L.M. 710+25

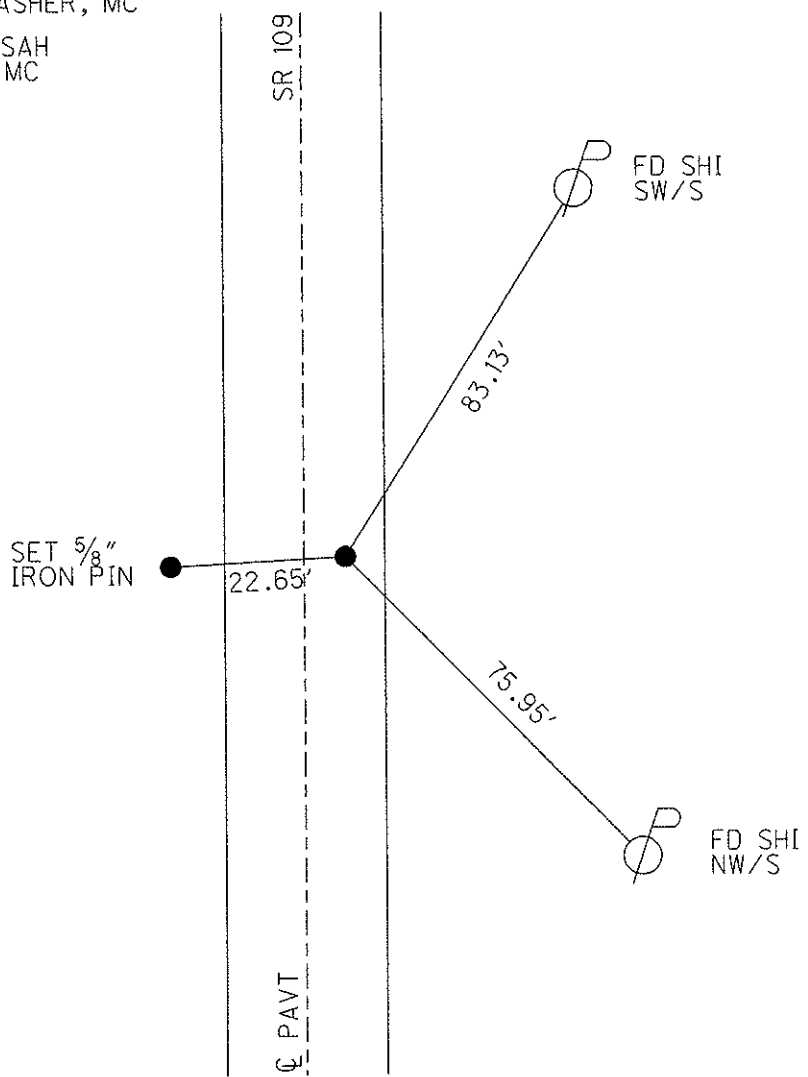


Grid: Northing: 726404.450 Easting: 1548969.353

03-08-13 RESET MAG/WASHER, MC

06-18-12 GPS REF A36, SAH

03-08-13 GPS FIN A36, MC



O.D.O.T. DISTRICT 2 SURVEY OFFICE

PERSONNEL

REFERENCE NO. 36-A

SHEET 23 OF 28

NOTES CANTERBURY

H.C. Rousos

R.C. CANTERBURY

DATE 9-3-96

WEATHER FAIR

TEMP. +80°

ROUTE S.R. 109

COUNTY FULTON

TOWNSHIP PIKE

SECTION 35

T 9 S R 3 E

Reset P.K. / WASHER
9-29-97
C.L.

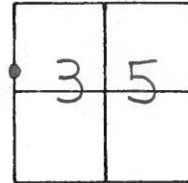
TYPE MONUMENT PK / WASHER

ON SURFACE - ~~BELOW~~ YES

~~LEFT - C~~ PAV'T. - RIGHT 1.44" RT &

1.448 TO RT EDGE PAVEMENT

S.L.M. 21 + 669.3 (710 + 25)



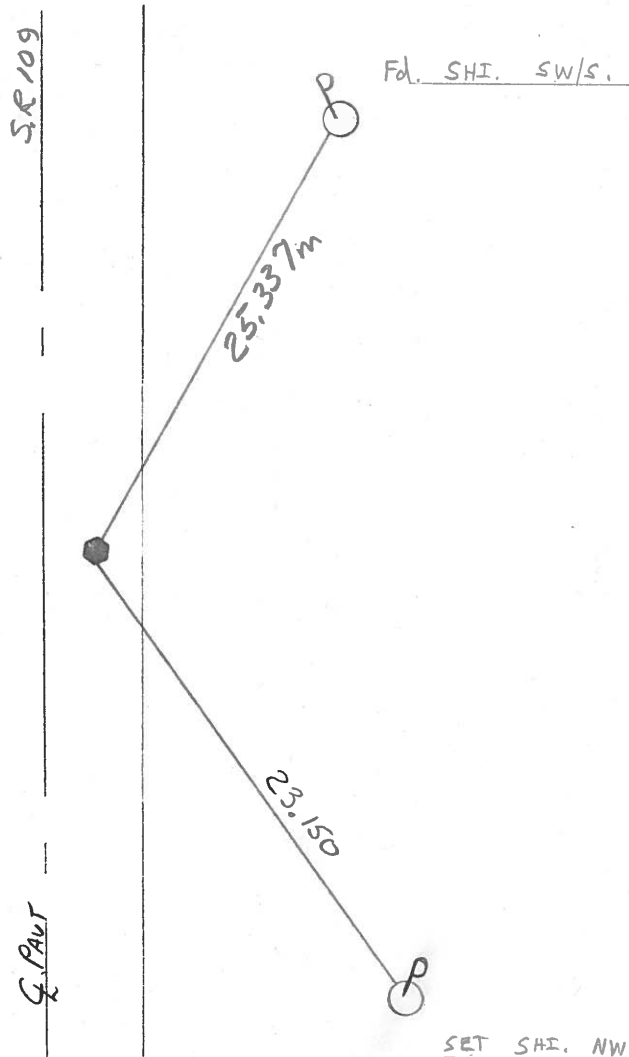
SET P.K. / WASHER IN FINAL COURSE

11/23/96. MRC. CLOUDY

- CANTERBURY +32°F

H.C. - MOSER

R.C. - VAN DUSEN



O.D.O.T. DISTRICT 2 SURVEY OFFICE

PERSONNEL

REFERENCE NO. 36-A

SHEET _____ OF _____

NOTES BARNHISEL

H.C. " "

R.C. HOFFMAN

DATE 9-4-90

WEATHER CLEAR

TEMP. +85°

ROUTE 109

COUNTY Fulton

TOWNSHIP PIKE

SECTION 35

T 9 S R 3 E

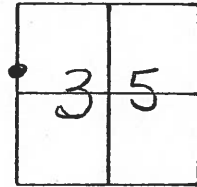
TYPE MONUMENT Sm RR Spk

ON SURFACE - ~~BELOW~~ YES

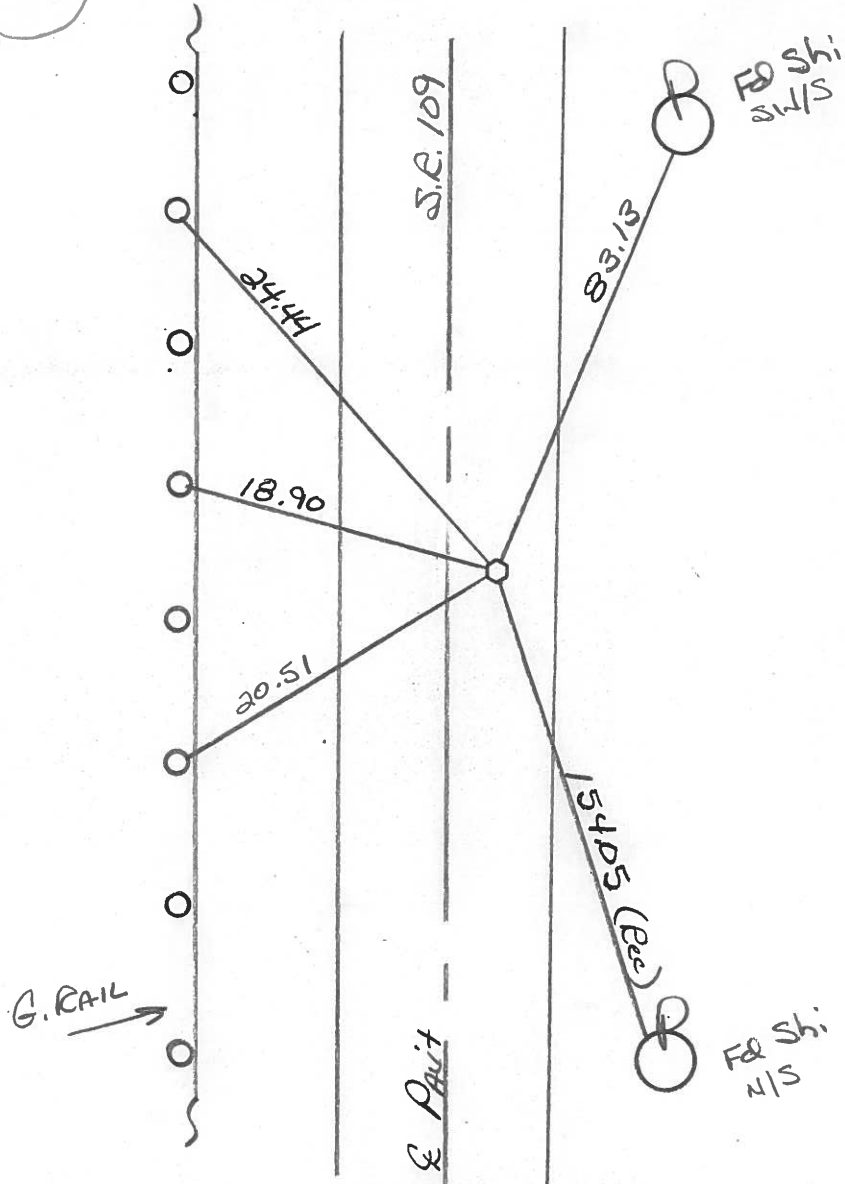
LEFT - & PAV'T. - RIGHT 4.6

5.5 TO RT EDGE PAVEMENT

S.L.M. 710+25



Set P.K. & Washer
10-1-90
MB



ODOT. DISTRICT 2 SURVEY OFFICE

SHEET 20 OF

County Fulton S.R. 109

Date 12 April 84

Township Pike

Weather Sunny

Section 35

Temp. 52°

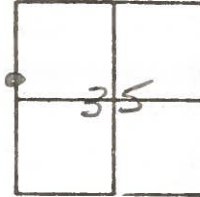
T N, R E

Personnel I. Stone

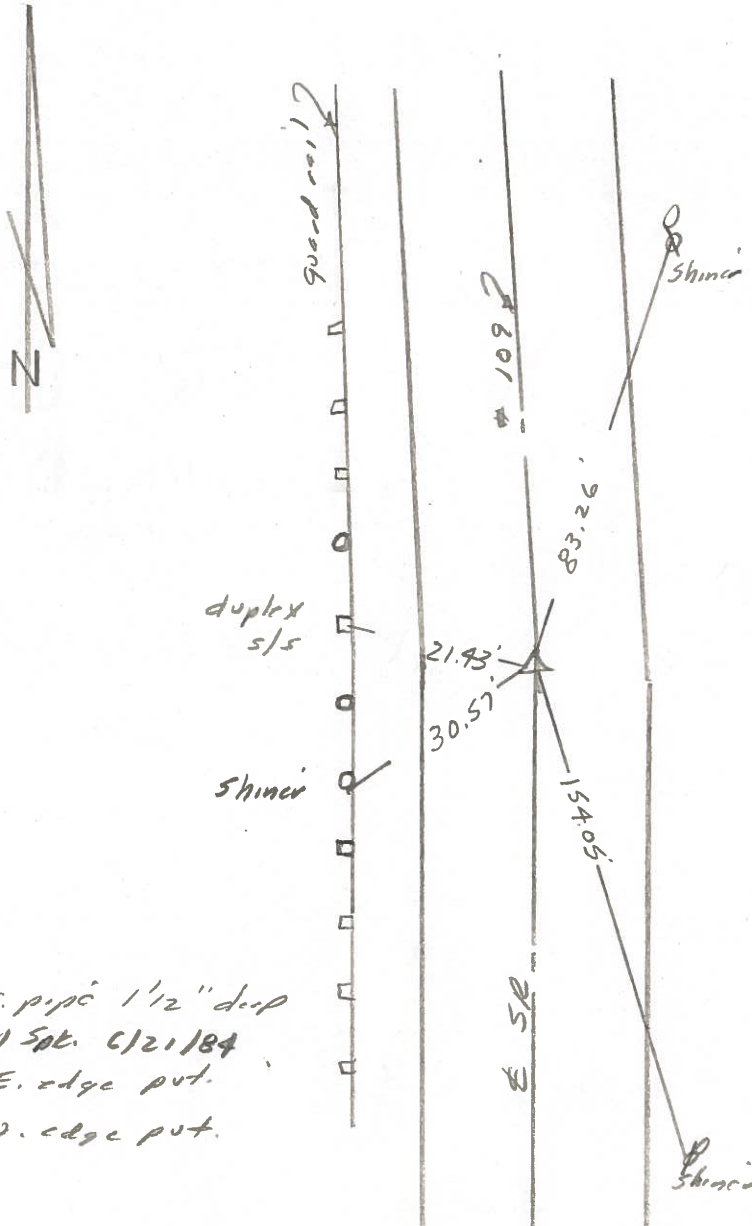
P. Nusser

R. Michalak

D. Curtis



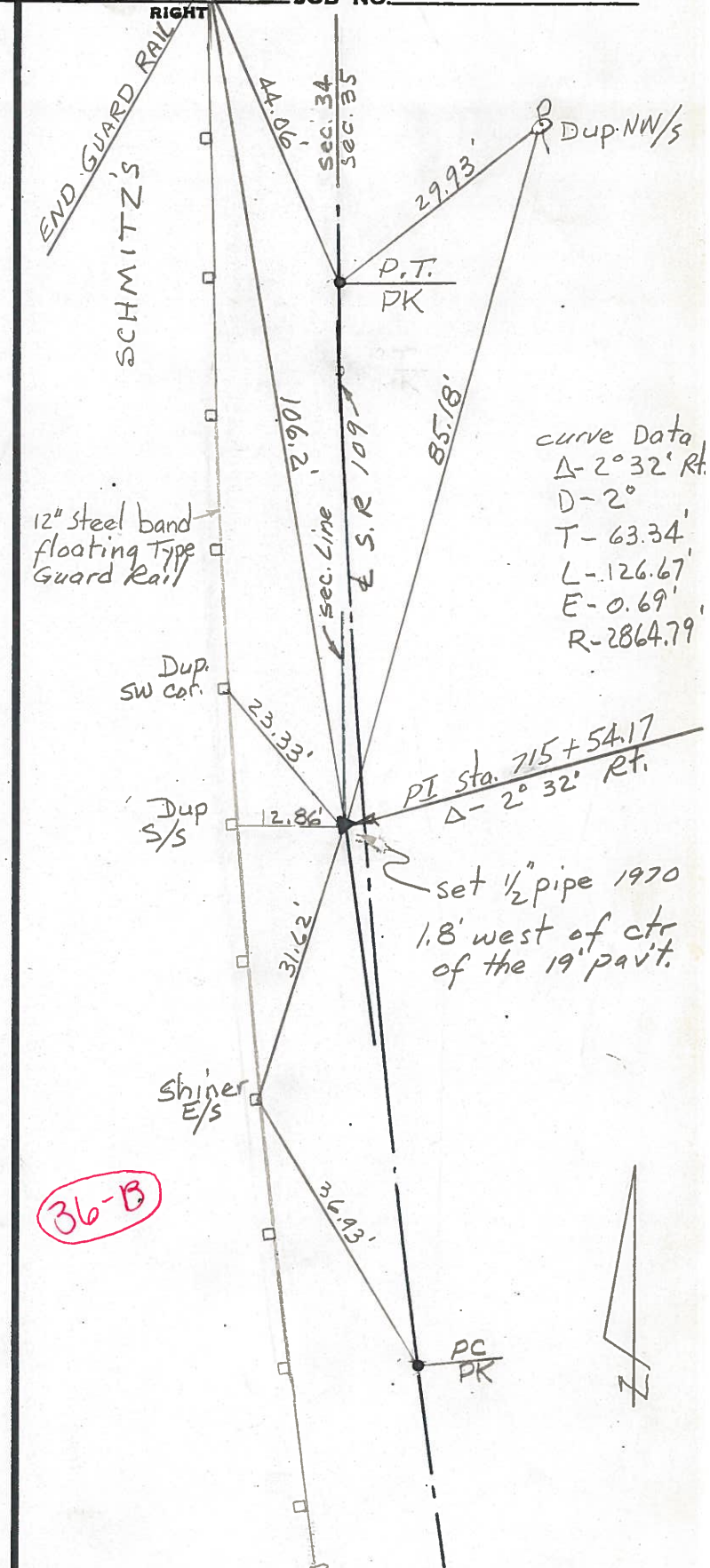
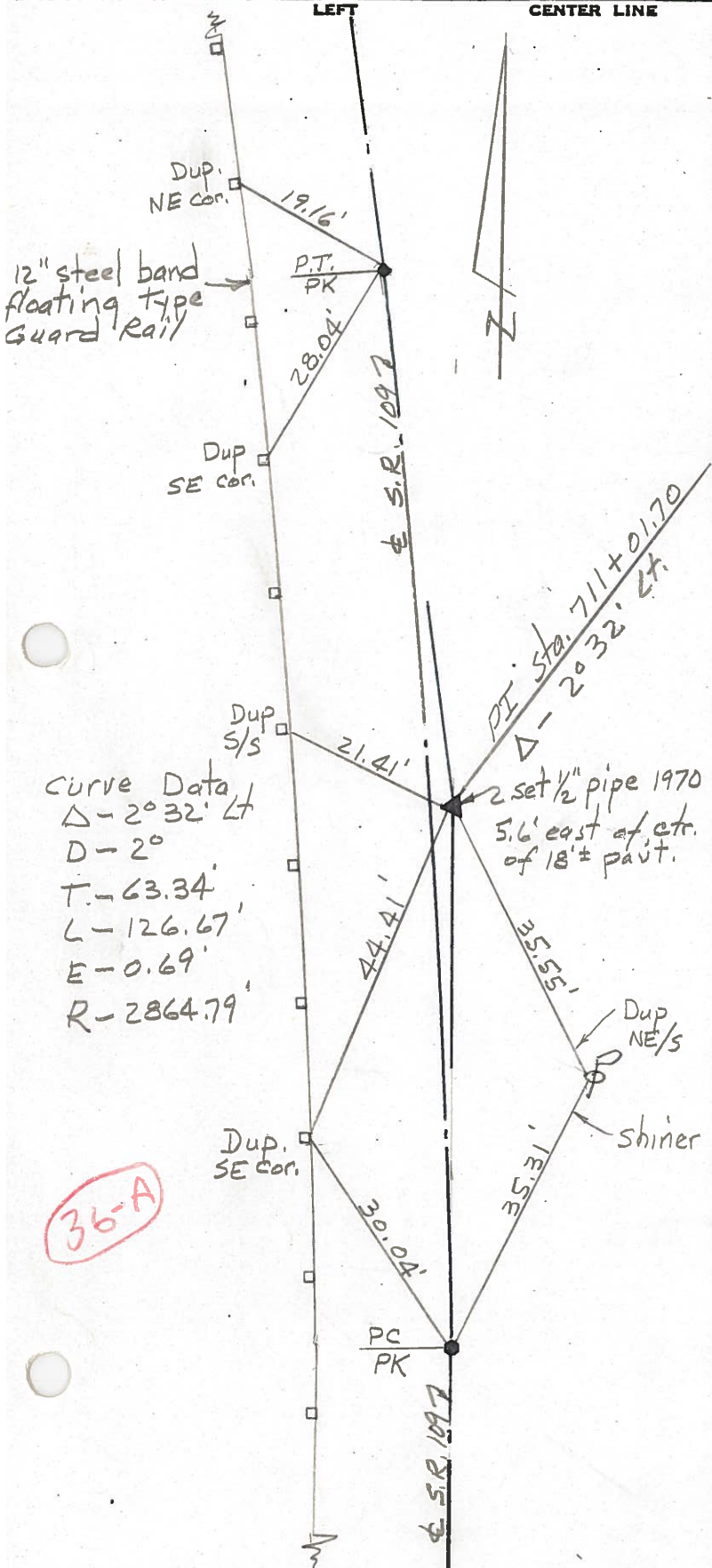
REF. NO. 36-A



Fd 1/2" I. pipe 1 1/2" deep
Set Small Sp. C121184
5.0' to E. edge put.
13.0' to W. edge put.

PERSONNEL Red Beach TITLE _____ PERSONNEL W. Knape TITLE _____
 COUNTY Fulton DATE 24-25 Feb '77
 S. R. 109 WEATHER _____
 SEC. PIKE TWP TEMP. _____

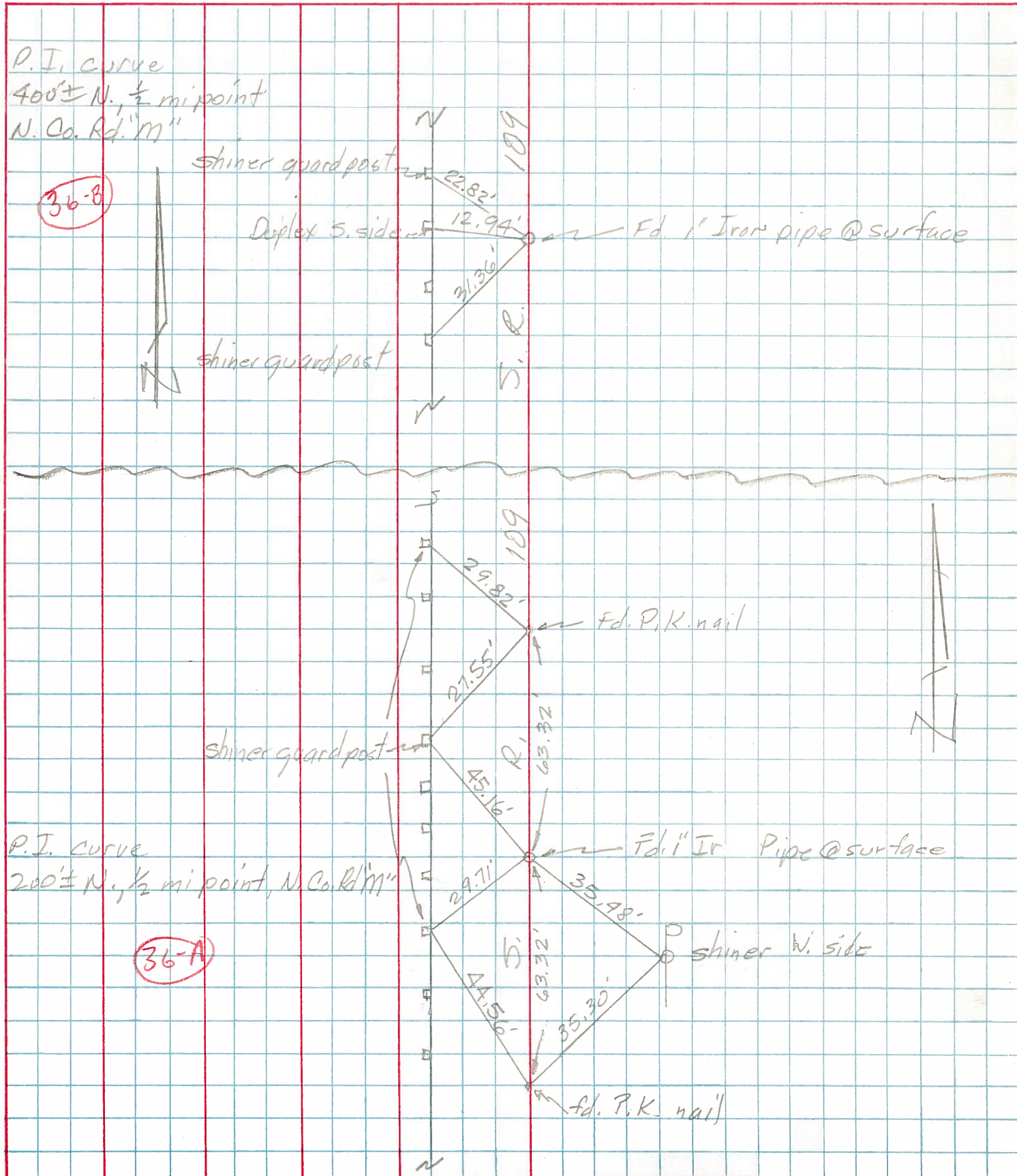
DESCRIPTION CONTROL POINTS JOB NO. _____



PERSONNEL	TITLE	PERSONNEL	TITLE
Tamsic		Boyle	
Neuser			
Granata			
Vanya			

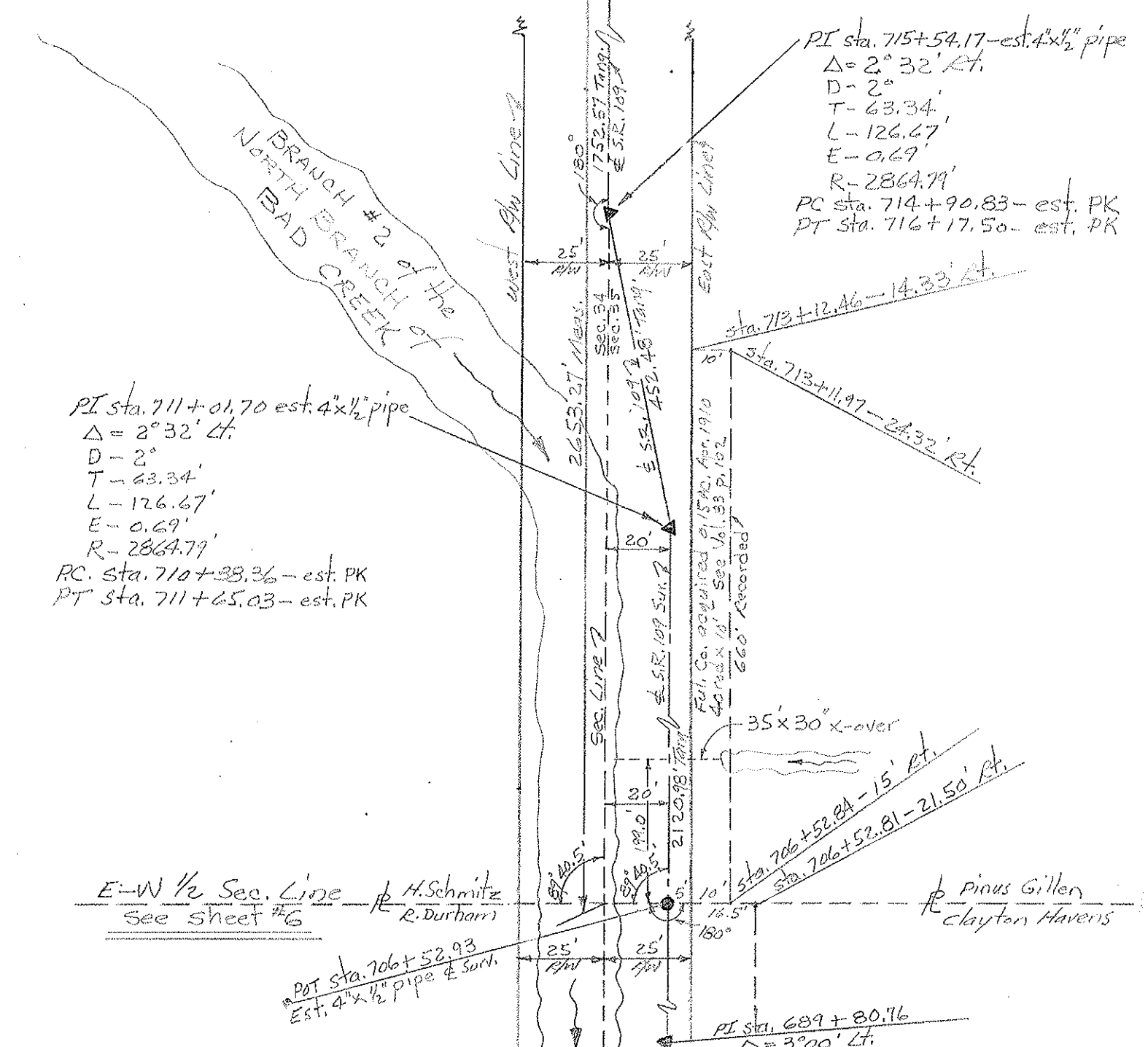
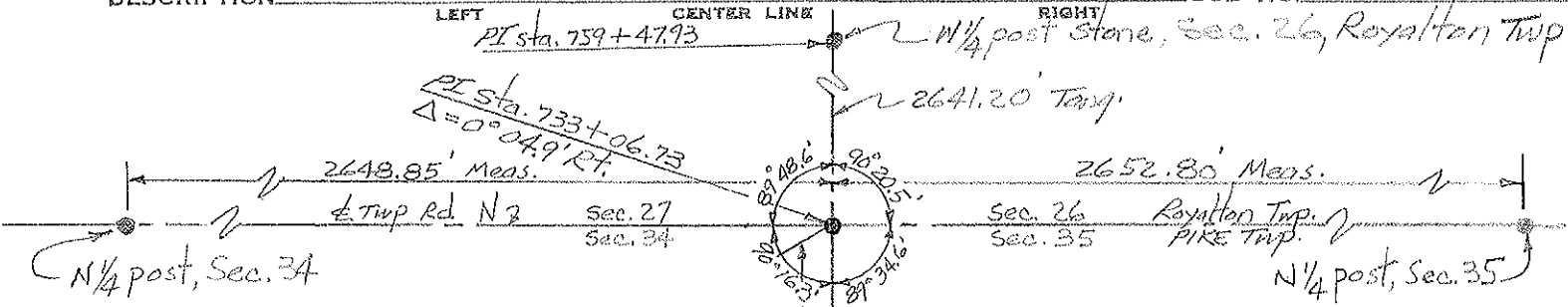
COUNTY Fulton DATE July 23, 1973
 S. R. 109 WEATHER _____
 SEC. Royalton Twp. TEMP. _____

DESCRIPTION _____ LEFT _____ CENTER LINE _____ RIGHT _____ JOB NO. _____



PERSONNEL TITLE PERSONNEL TITLE COUNTY FULTON DATE Dec, 1970
Red Beach _____
Newcomb _____
Knope _____
Wise _____
 S. R. 109 WEATHER _____
 SEC. PIKE TWP. 7-9-5 TEMP. _____

DESCRIPTION ALIGNMENT & CONTROLS JOB NO. _____



PI sta. 715+54.17-est. 4"x1/2" pipe
 $\Delta = 2^{\circ} 32' \text{ Rt.}$
 $D = 2'$
 $T = 63.34'$
 $L = 126.67'$
 $E = 0.69'$
 $R = 2864.79'$
 PC sta. 714+90.83- est. PK
 PT sta. 716+17.50- est. PK

PI sta. 711+01.70 est. 4"x1/2" pipe
 $\Delta = 2^{\circ} 32' \text{ Lt.}$
 $D = 2'$
 $T = 63.34'$
 $L = 126.67'$
 $E = 0.69'$
 $R = 2864.79'$
 RC. Sta. 710+38.36- est. PK
 PT Sta. 711+65.03- est. PK

E-W 1/2 Sec. Line See sheet #6 H. Schmitz R. Durham

Pinus Gillen Clayton Havens

POT Sta. 706+52.93 Est. 4"x1/2" pipe & Surc.

PI Sta. 689+80.76 $\Delta = 3^{\circ} 00' \text{ Lt.}$