

O.D.O.T. DISTRICT 2 SURVEY OFFICE (USE ONLY)

PERSONNEL

REFERENCE NO. 37-B

SHEET 31 OF 35

NOTES HARBAUGH

DATE 06-25-12

ROUTE SR 109

H.C. HUSS

WEATHER FAIR

COUNTY FULTON

R.C. COUTCHER

TEMP. 68°

TOWNSHIP ROYALTON

SECTION 26

T 9 S R 3 E

TYPE MONUMENT _____ PK/WASHER

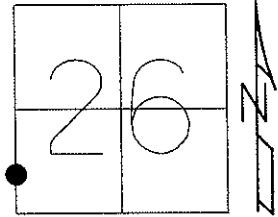
ON SURFACE - BELOW _____ ON

LEFT - ϕ PAV'T - RIGHT _____ 0.5'

9.4' TO LT EDGE PAVEMENT

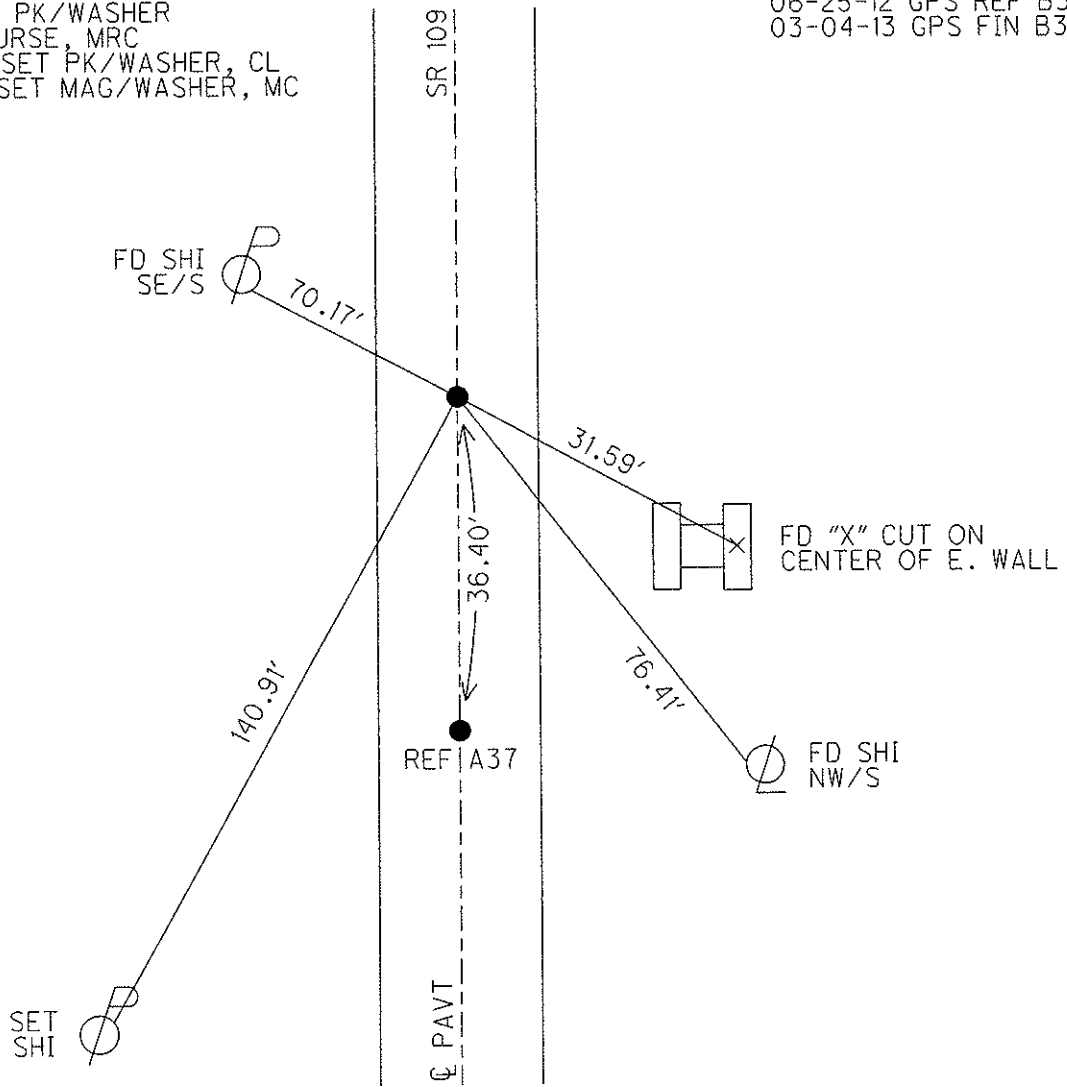
S.L.M. _____ 749+11

Grid: Northing: 730196.611 Easting: 1548923.555



11-23-96 SET PK/WASHER
IN FINAL COURSE, MRC
09-29-97 RESET PK/WASHER, CL
03-04-13 RESET MAG/WASHER, MC

06-25-12 GPS REF B37
03-04-13 GPS FIN B37



O.D.O.T. DISTRICT 2 SURVEY OFFICE

PERSONNEL

REFERENCE NO. 37 A & B

SHEET 26 OF 28

NOTES CANTERBURY

H.C. Rousos

R.C. CANTERBURY

DATE 9-3-96

WEATHER FAIR

TEMP. +80°

Reset 9-29-97

C.L.

ROUTE S.R. 109

COUNTY FULTON

TOWNSHIP ROYALTON

SECTION 26

T 9 S R 3 E

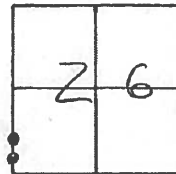
TYPE MONUMENT PK/WASHER PT A PK/WASHER PT B

ON SURFACE - BELOW YES YES

LEFT- & PAV'T. - RIGHT ON & ON &

2.82 TO LT EDGE PAVEMENT

S.L.M. ZZ + 813.600 ZZ + 824.680



(748+75 & 749+11)

Fd. SHI. SE/S.



21.374 m

31.714 m

SR 109

11.083

E Point

SET P.K./WASHER'S IN FINAL

COURSE 11/23/96. MRC.

Reset P.K./WASHER

9-29-97

C.L.

9.629 m (P)

C.B.

Fd. "X" CUT ON
CNT OF E. WALL

7.042 m (P)

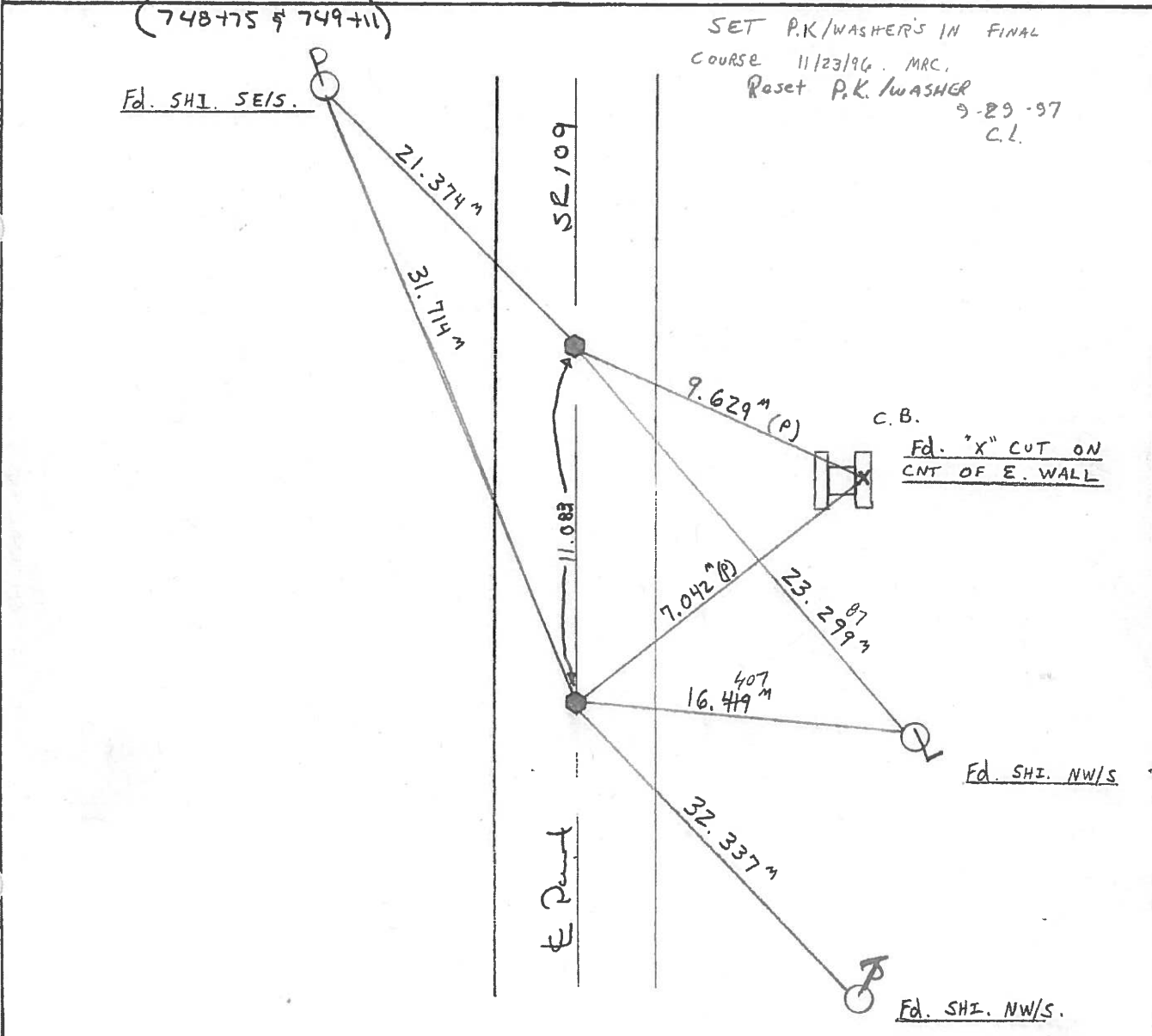
23.299 m

16.419 m

32.337 m

Fd. SHI. NW/S

Fd. SHI. NW/S.



O.D.O.T. DISTRICT 2 SURVEY OFFICE

PERSONNEL _____

REFERENCE NO. 37 A & B SHEET _____ OF _____

NOTES BARNHISEL

H.C. _____

R.C. HOFFMAN

DATE 9-4-90

WEATHER CLEAR

TEMP. +85°

ROUTE 109

COUNTY Fulton

TOWNSHIP COYALTON

SECTION 26

T 9 SR 3 E

PT. A

PT. B

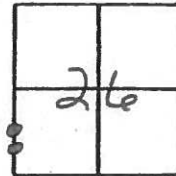
TYPE MONUMENT P.K. NAIL P.K. NAIL

ON SURFACE - BELOW YES YES

LEFT-☉ PAV'T. - RIGHT ON R 0.5 LT

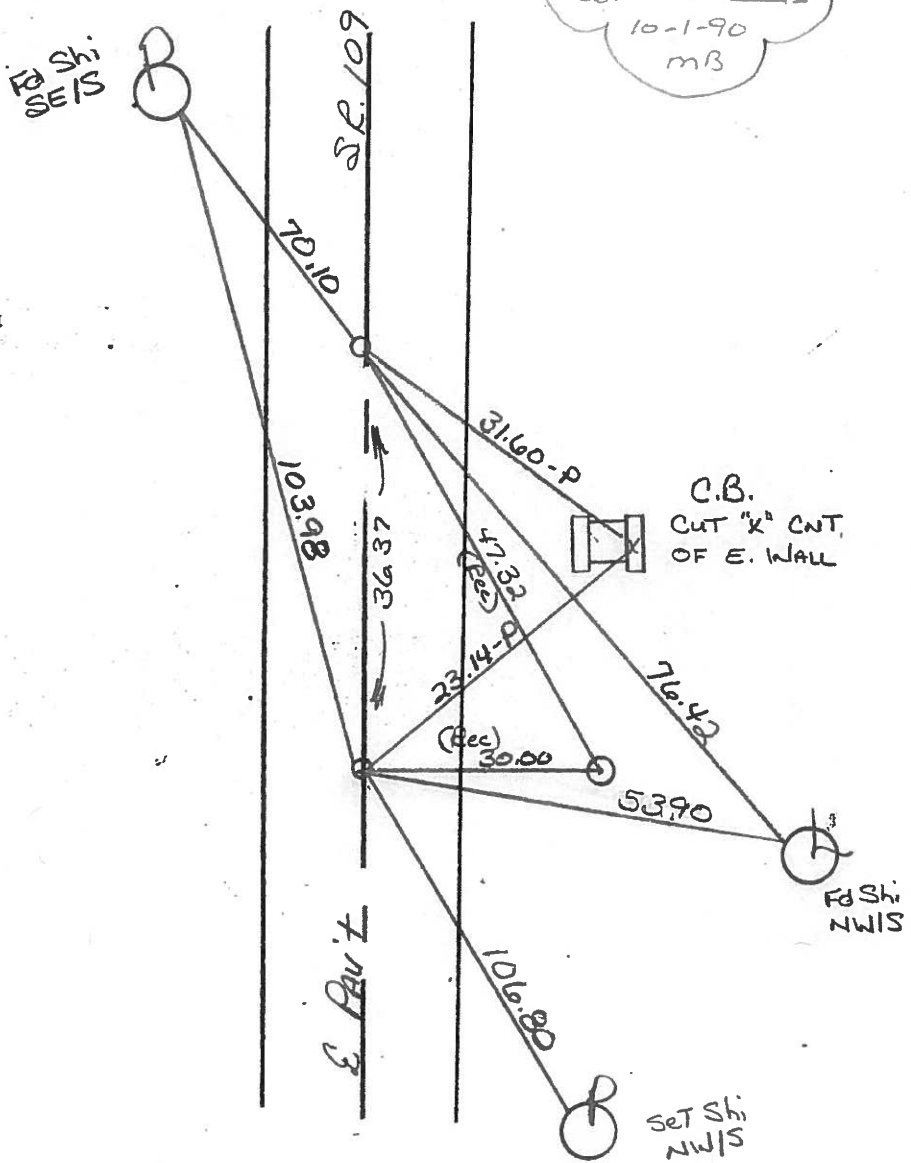
10.0 TO LT EDGE PAVEMENT

S.L.M. 748+75 & 749+11



Set Shi
SEIS

Set P.K. NAILS
10-1-90
MB



County Fulton S.R. 109

Date 12 April 84

Township Royalton

Weather Sunny

Section 26

Temp. 55°

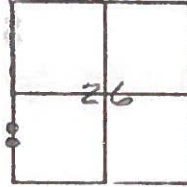
T N, R E

Personnel I. Stone

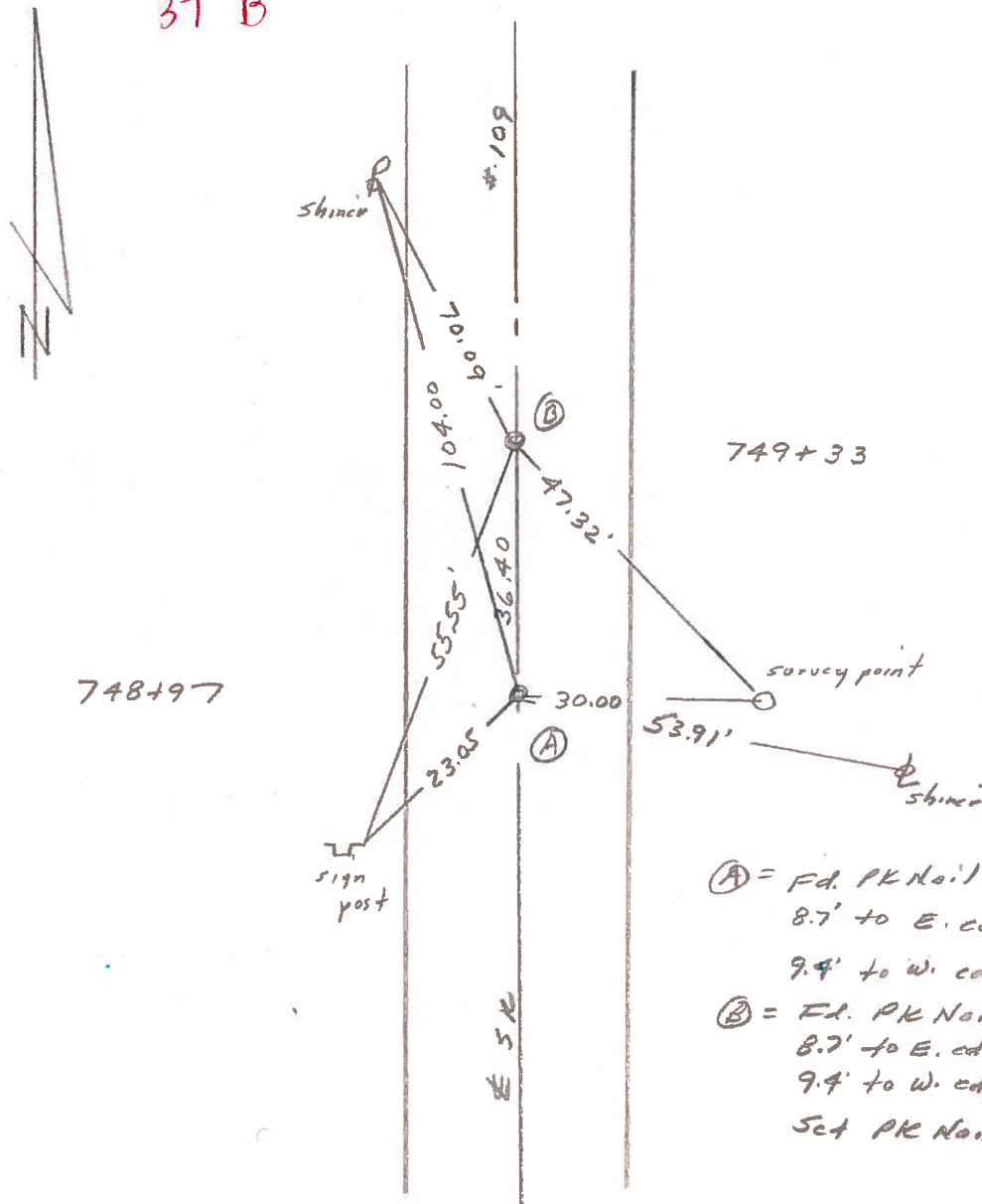
P. Neuser

R. Michalek

D. Curtis



REF. NO. 37 A
37 B



- (A) = Fd. PK Nail
8.7' to E. edge pt.
9.4' to W. edge pt.
 - (B) = Fd. PK Nail
8.7' to E. edge pt.
9.4' to W. edge pt.
- Set PK Nails 6/21/84