

O.D.O.T. DISTRICT 2 SURVEY OFFICE (USE ONLY)

PERSONNEL

REFERENCE NO. 39

SHEET 1 OF 9

NOTES LOEHRKE

DATE 7/15/93

ROUTE SR 109

H.C. ROMETO

WEATHER PT. CLOUDY

COUNTY FULTON

R.C. CANTERBURY

TEMP. 80°

TOWNSHIP ROYALTON

COROES

DWG BY MILLER

PID 102802

SECTION 23

T 9 S R 3 E

TYPE MONUMENT MONBOX

ON SURFACE - BELOW ON

OFFSET ☉ PAVEMENT ON LT : RT

10.6 TO RT EDGE PAVEMENT

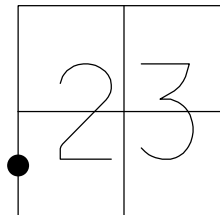
STATION: 798+88.15

HORZ.DATUM: NAD83(2011)

GEOID: 2012A

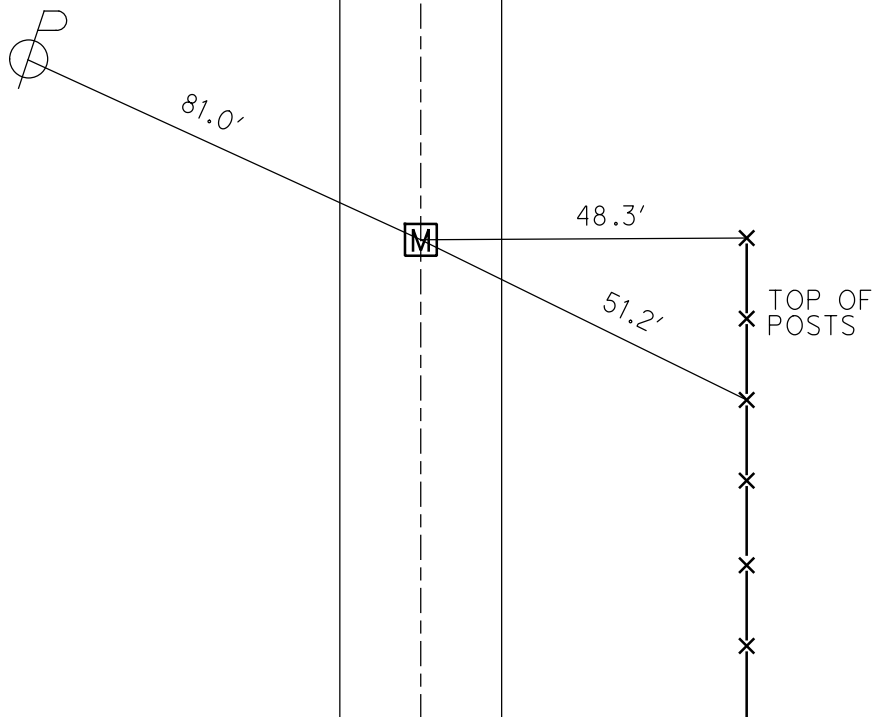
GRID: NORTHING: 735212.070

EASTING: 1548889.594



RECORD:
 1/4 MILE NORTH OF US 20
 FD MONBOX COULD NOT
 OPEN SHOT CENTER OF BOX
 REF39
 1-30-17, JFO
 FD 1" IPIN IN MONBOX
 NEWREF39
 5-2-18, JFO

☉ S.R. 109



O.D.O.T. DISTRICT 2 SURVEY OFFICE

PERSONNEL _____

REFERENCE NO. 39

SHEET 2 OF 10

NOTES LOENAKE

H.C. ROMETO

R.C. CANTERBURY

CORDES

DATE 7-15-93

WEATHER Pt. Cloudy

TEMP. +80

ROUTE S.R. 109

COUNTY Fulton

TOWNSHIP Royalton

SECTION 23

T 9 S R 3 E

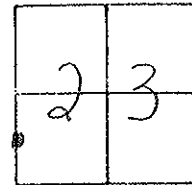
TYPE MONUMENT Monument Box

ON SURFACE - BELOW Yes

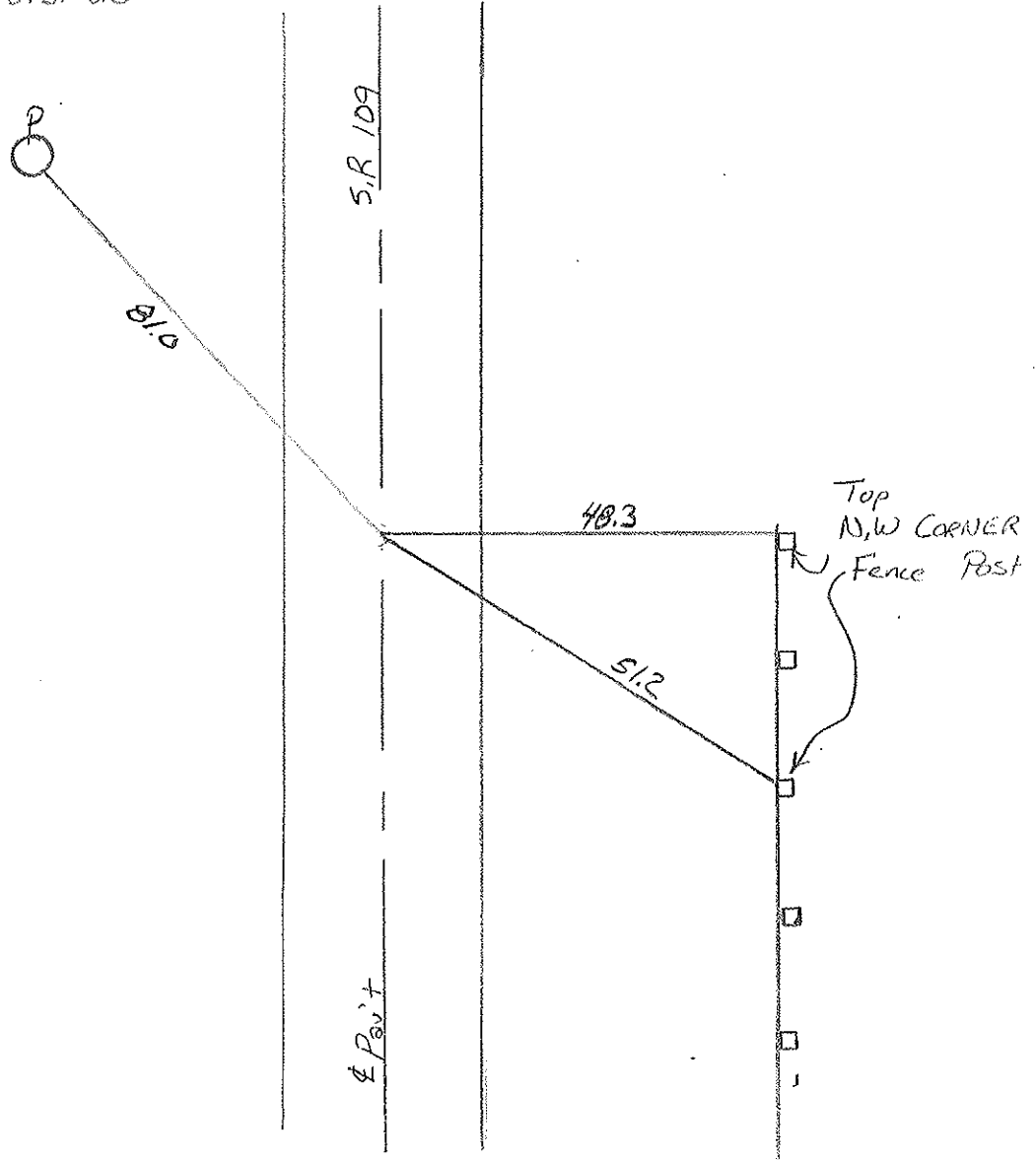
LEFT - C PAV'T. - RIGHT Yes

10.6 TO Rt EDGE PAVEMENT

S.L.M. 798 475



1/4 mile N. of U.S. 20



Resurfaced 1993

O.D.O.T. DISTRICT 2 SURVEY OFFICE

SHEET

OF

County FULTON S.R. 109

Township ROYALTON

Section 23

T9 S R3E

Personnel HOFFMAN

Householder

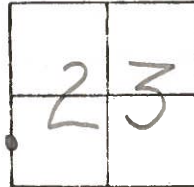
Loehrke

39

Date 5-26-81

Weather Partly Cloudy

Temp. +70°

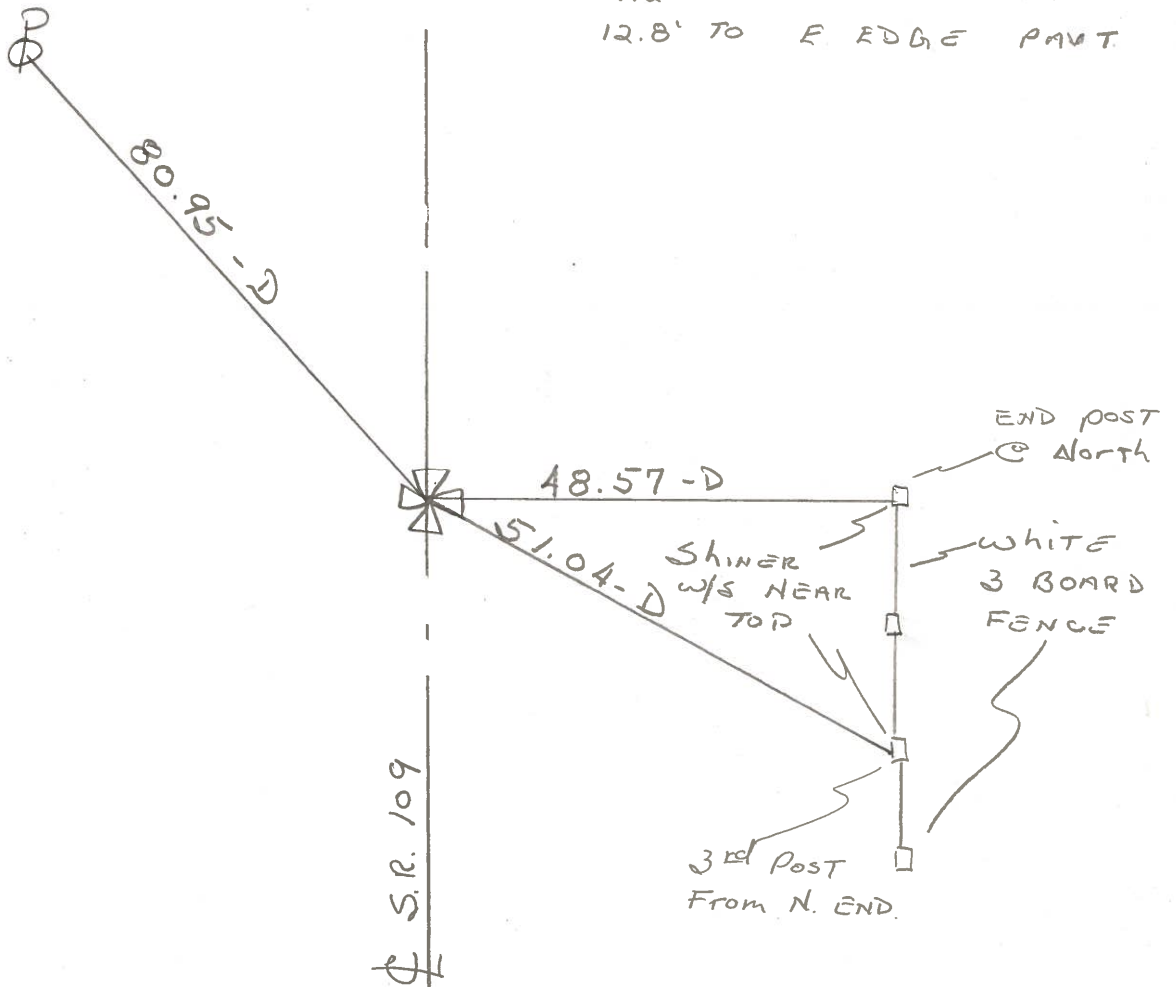


1/4 mile N. of U.S. 20

Fd. METAL MON. Box / "+" on Top of Lid

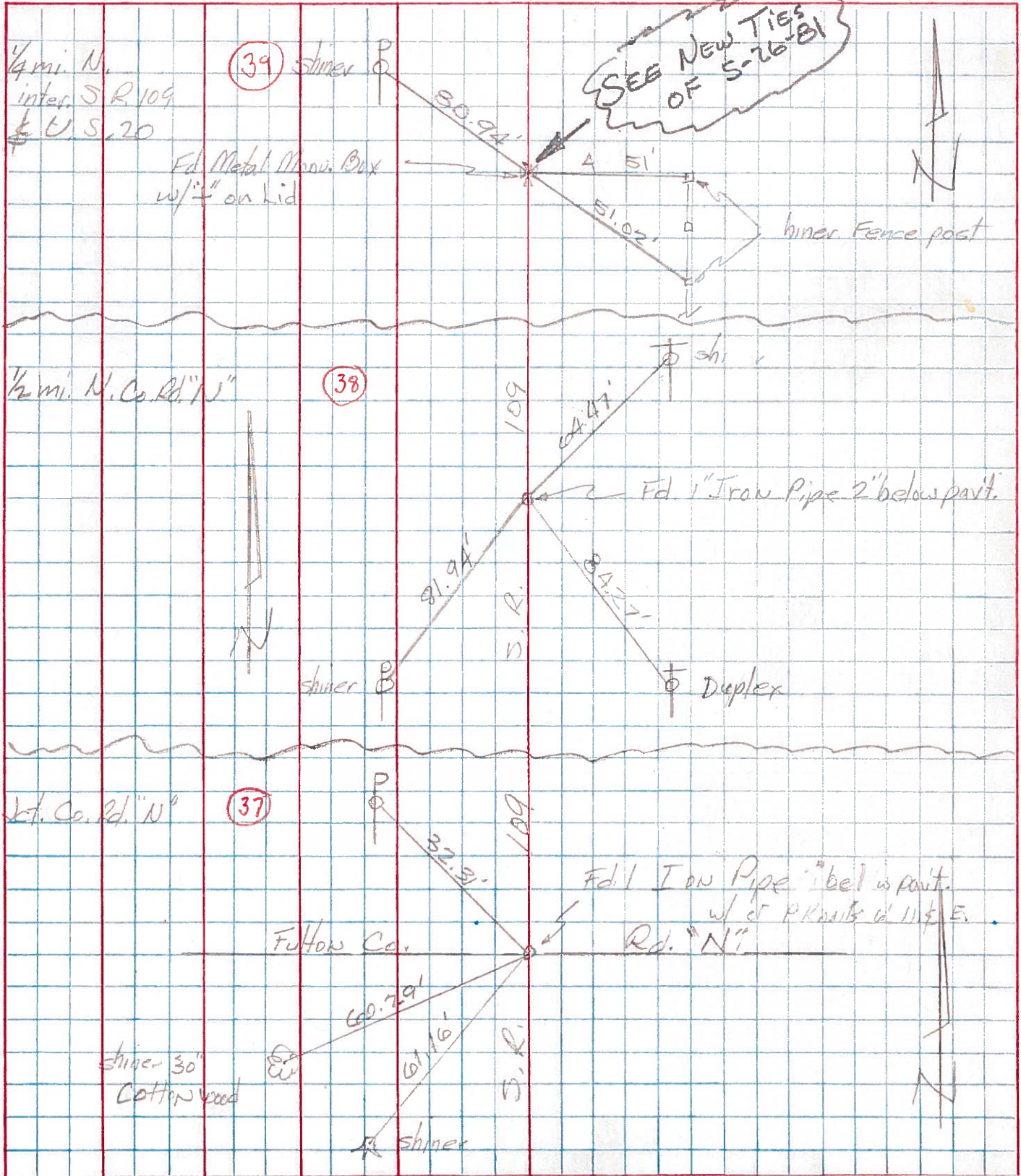
11.2' TO W. EDGE PAVT.
12.8' TO E. EDGE PAVT.

SHINER
SE/S



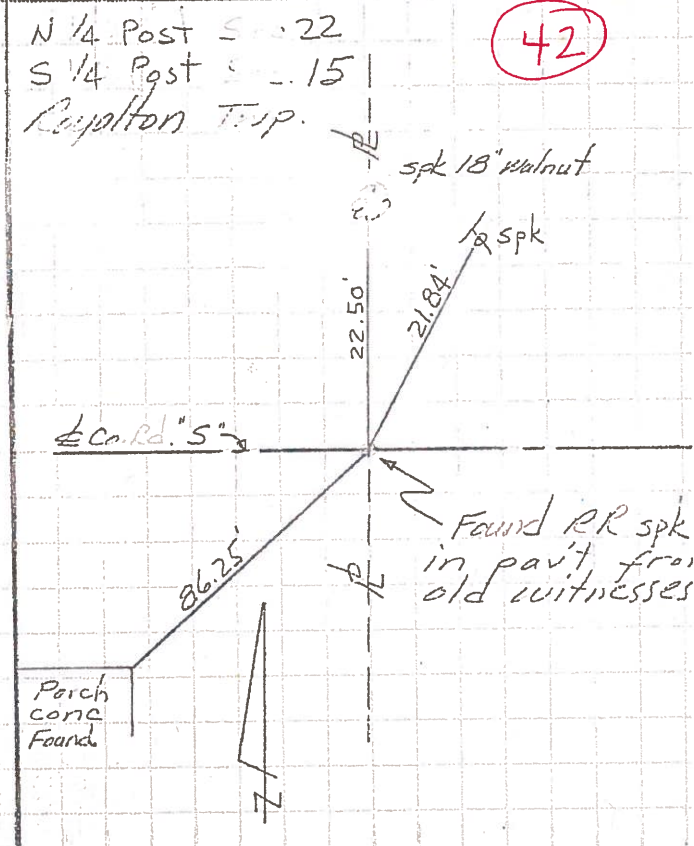
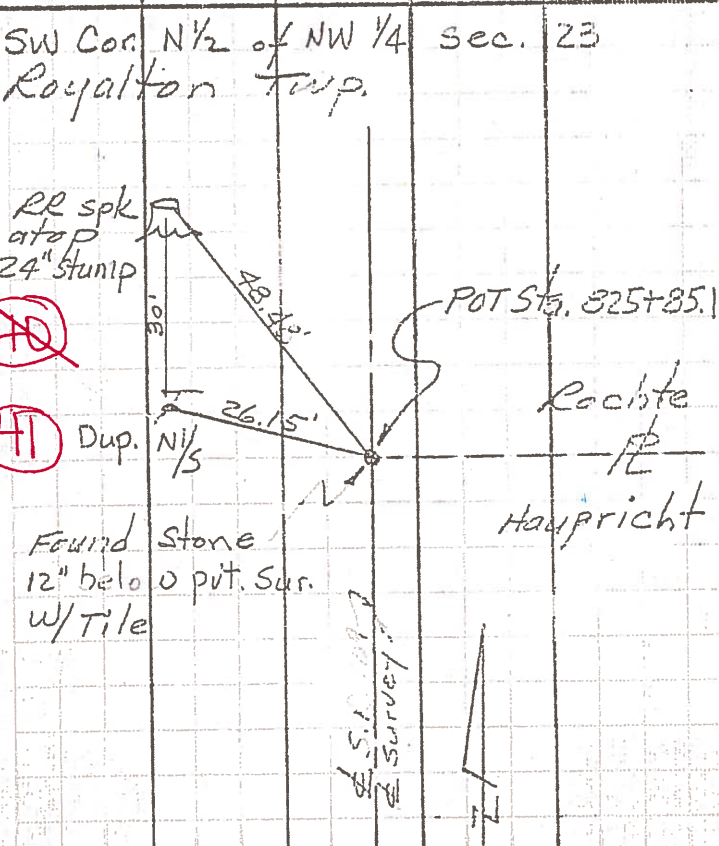
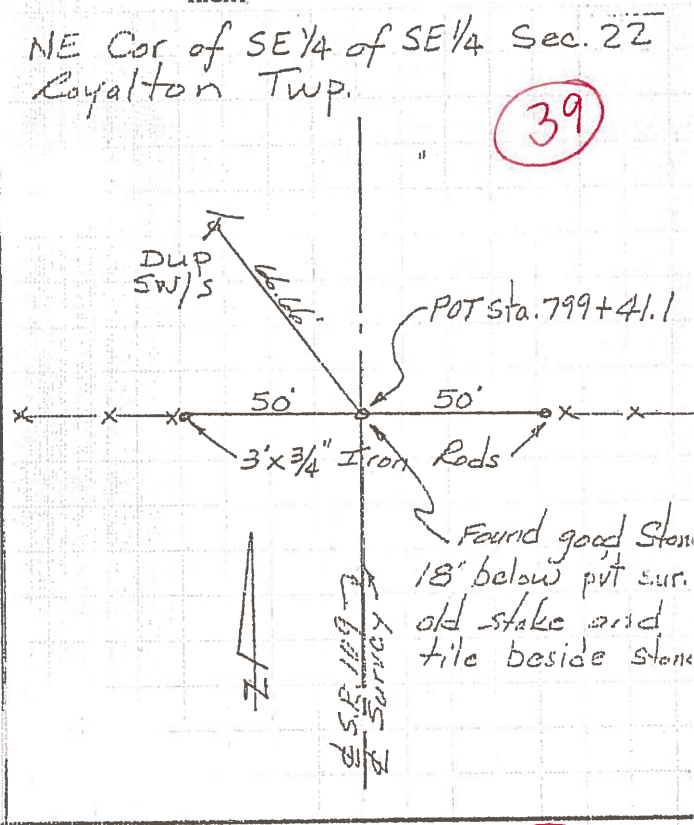
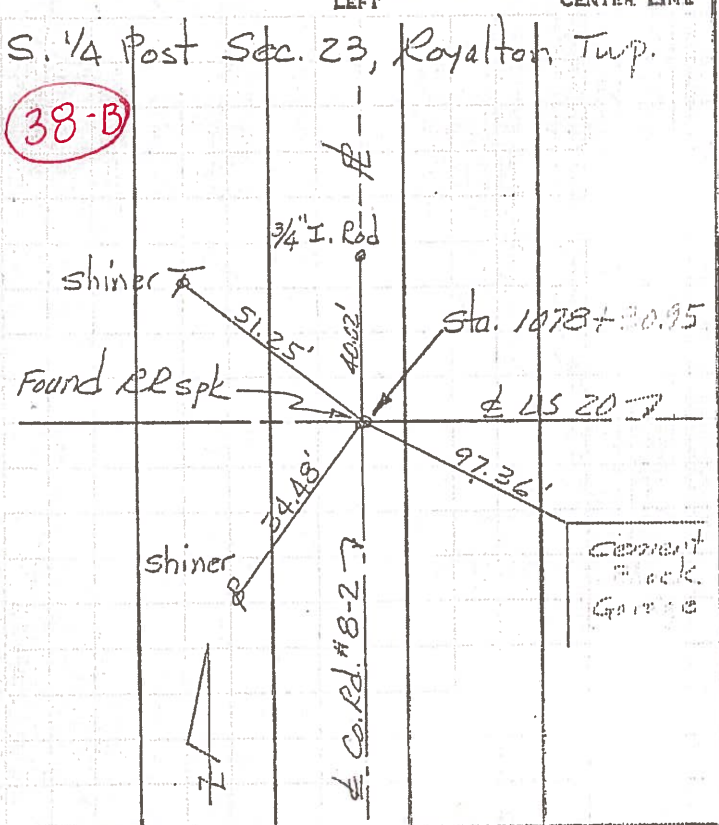
PERSONNEL	TITLE	PERSONNEL	TITLE	COUNTY	DATE
Towmsic		Boyle		Fulton	July 23, 1973
Newser				S. R. 109	WEATHER
Giragata				SEC. Roylton Twp.	TEMP.
Vanyo					

DESCRIPTION	LEFT	CENTER LINE	RIGHT	JOB NO.
-------------	------	-------------	-------	---------



PERSONNEL	TITLE	PERSONNEL	TITLE	COUNTY	DATE
Besch				Fulton	1963
Armbuster				S. R. 109	WEATHER
Kraeppe				SEC. 14.89-18.02	TEMP.
Mahler					

DESCRIPTION CONTROL POINTS JOB NO.



PERSONNEL TITLE PERSONNEL TITLE COUNTY Fulton DATE 1963
Red Beach _____
Armbruster _____ S. R. 109 WEATHER _____
Knope _____
Mahler _____ SEC. 14.89-18.02 TEMP. _____

DESCRIPTION ALIGNMENT & PROPERTY LINES JOB NO. _____
LEFT CENTER LINE RIGHT

