

O.D.O.T. DISTRICT 2 SURVEY OFFICE (USE ONLY)

PERSONNEL _____ REFERENCE NO. 40 SHEET 2 OF 9
 NOTES TRENKA DATE 6/19/18 ROUTE SR 109
 H.C. O'DONNELL WEATHER CLOUDY COUNTY FULTON
 R.C. TRENKA TEMP. 75° TOWNSHIP ROYALTON
COROES SECTION 23
 DWG BY MILLER PID 102802 T 9 S R 3 E

TYPE MONUMENT MONBOX W/ STONE

~~ON SURFACE~~ - BELOW 1.5'

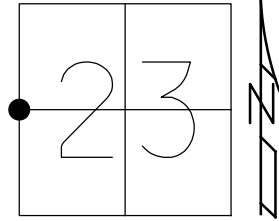
OFFSET \odot PAVEMENT ON LT : RT

9.9 TO RT EDGE PAVEMENT

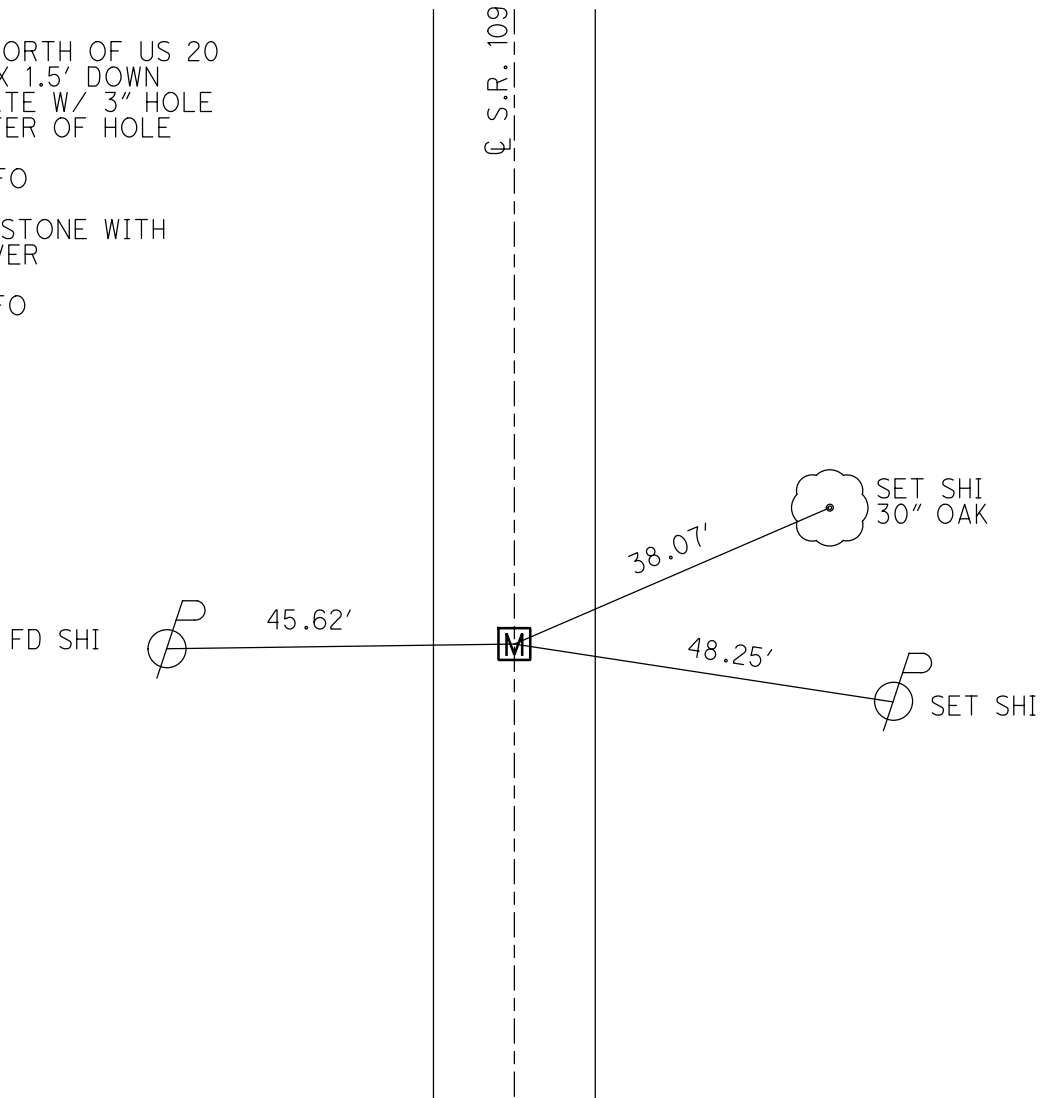
STATION: 812+09.77

HORZ.DATUM: NAD83(2011) GEOID: 2012A

GRID: NORTHING: 736533.647 EASTING: 1548877.547



RECORD:
 1/2 MILE NORTH OF US 20
 FD MONBOX 1.5' DOWN
 METAL PLATE W/ 3" HOLE
 SHOT CENTER OF HOLE
 REF40
 1-30-17, JFO
 SHOT HIGH
 POINT ON STONE WITH
 3" PIPE OVER
 NEWREF40
 6-19-18, JFO



O.D.O.T. DISTRICT 2 SURVEY OFFICE

PERSONNEL

REFERENCE NO. 40

SHEET 3 OF 10

NOTES LOEHRKE

H.C. RUMBLE

R.C. CANTERBURY

CORDES

DATE 7-15-93

WEATHER PT CLOUDY

TEMP. +80

ROUTE S.R. 109

COUNTY Fulton

TOWNSHIP Boyalton

SECTION 23

T 9 S R 3 E

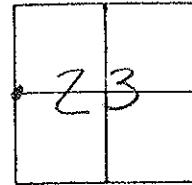
TYPE MONUMENT MAN BOX

ON SURFACE - ~~BELOW~~ Yes

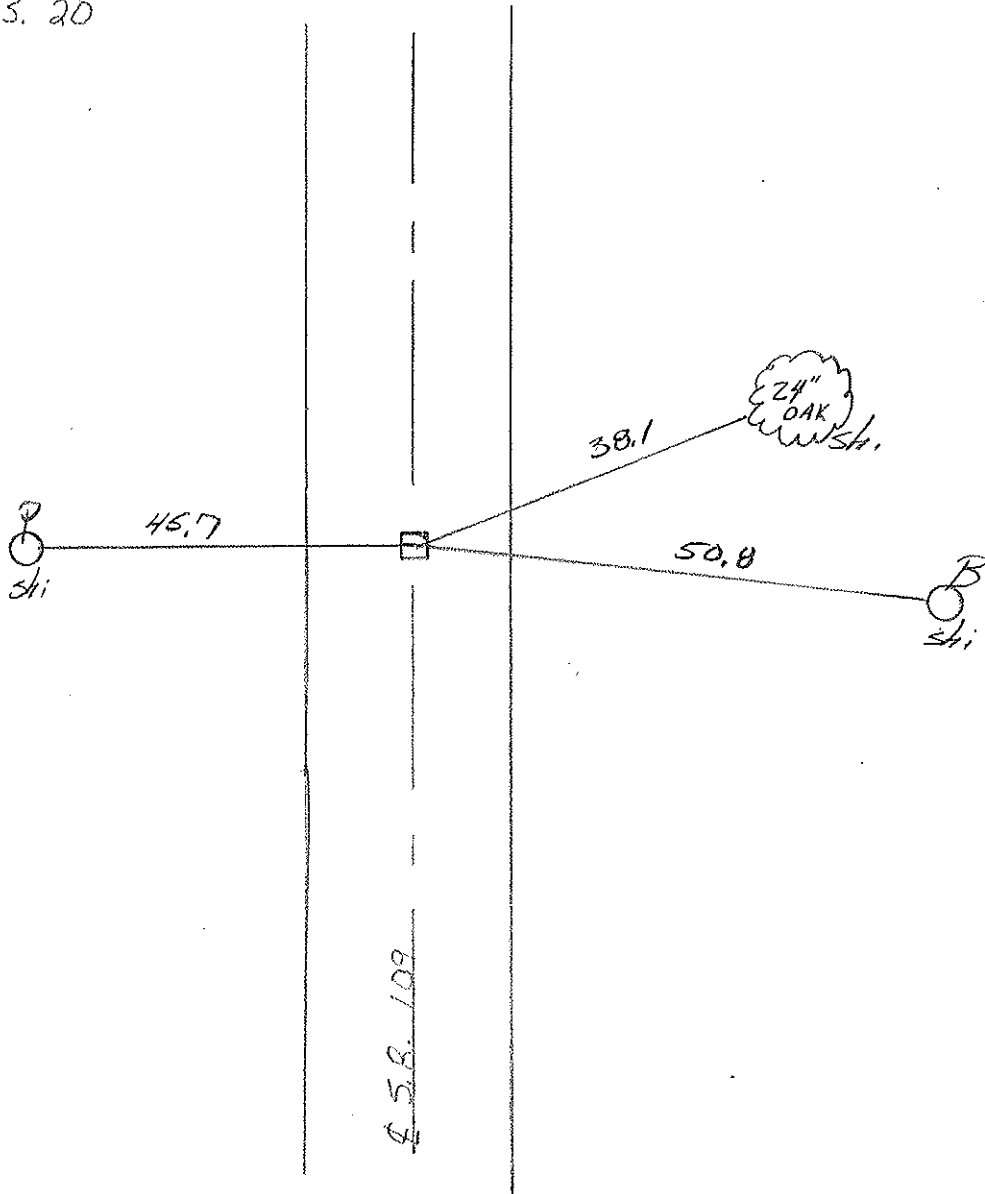
~~LEFT - C~~ PAV'T. - RIGHT Yes

9.9 TO Rt EDGE PAVEMENT

S.L.M. 811799



1/2 mile N. of U.S. 20



County FULTON S.R. 109

Township ROYALTON

Section 23

T9N R3E

Personnel HOFFMAN

HOUSEHOLDER

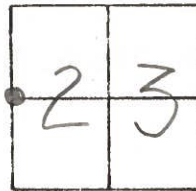
LOEHRKE

40

Date 5-26-81

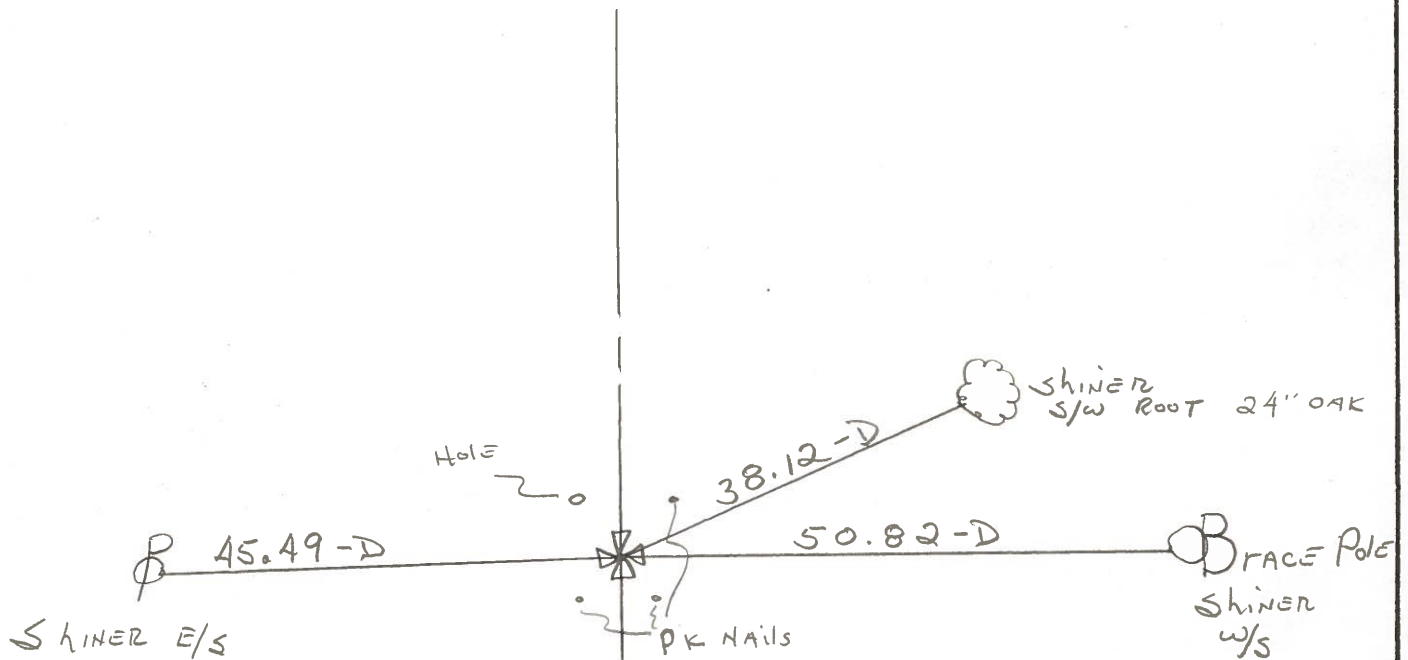
Weather PARTLY CLOUDY

Temp. +70°



1/2 mile N. of U.S. 20

Fd. METAL MON. BOX
@ CTR. of PAUT.



NOTE:

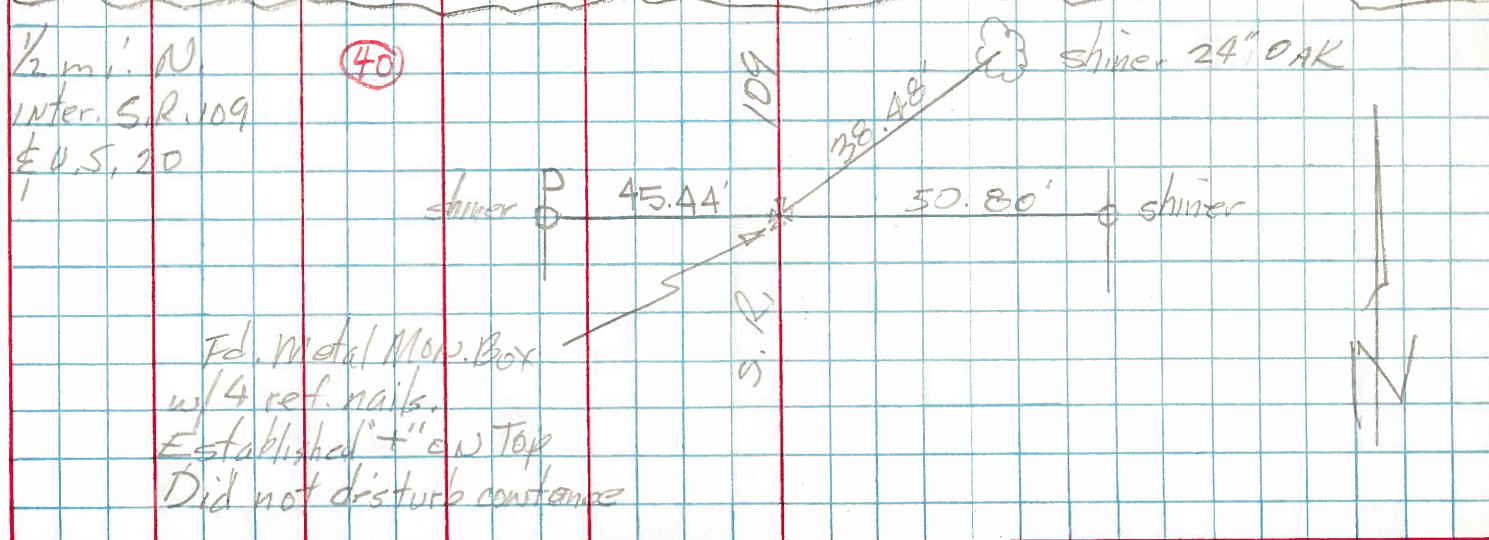
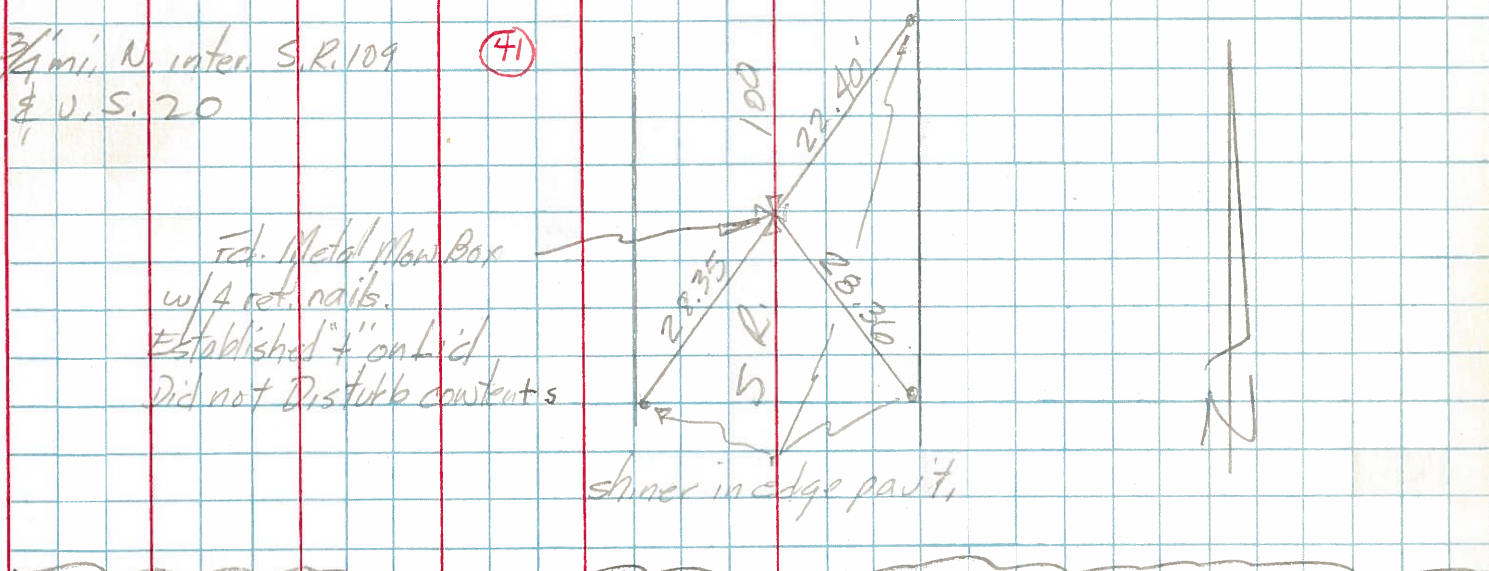
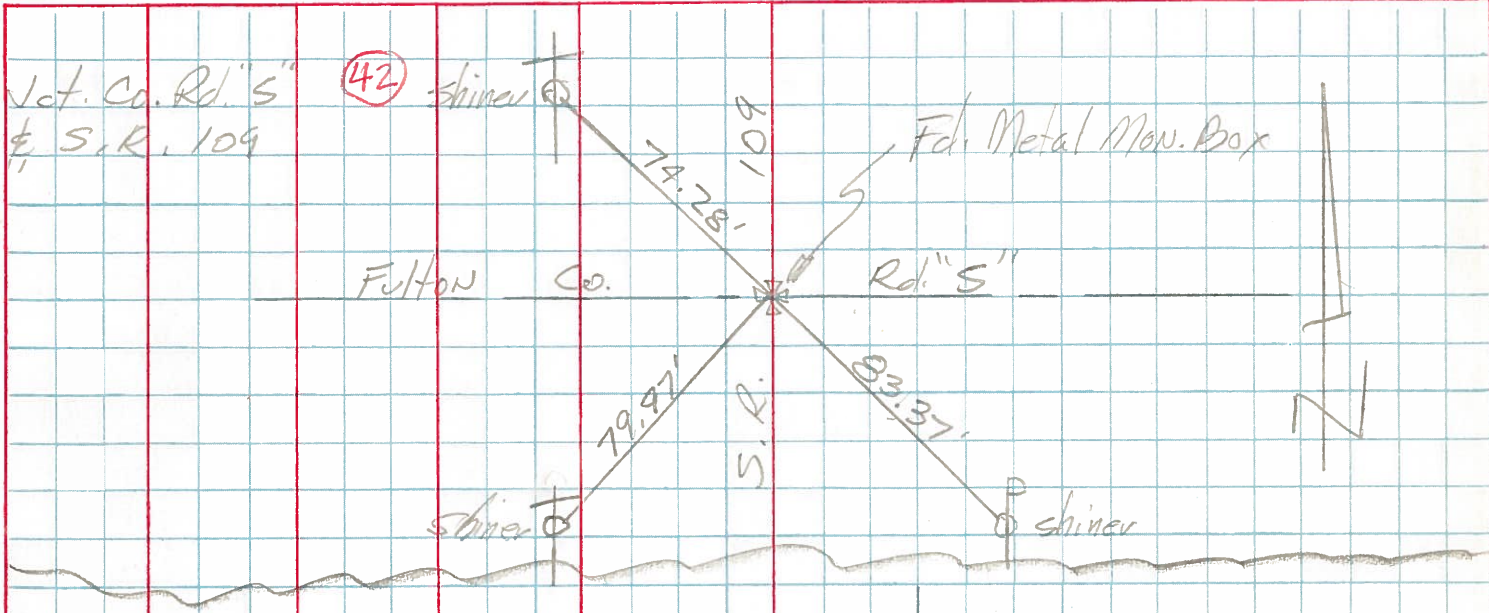
ESTABLISHED POINT ON TOP of
LID, USING 3 PK'S & 1 hole.
Could NOT REMOVE LID

S.R. 109

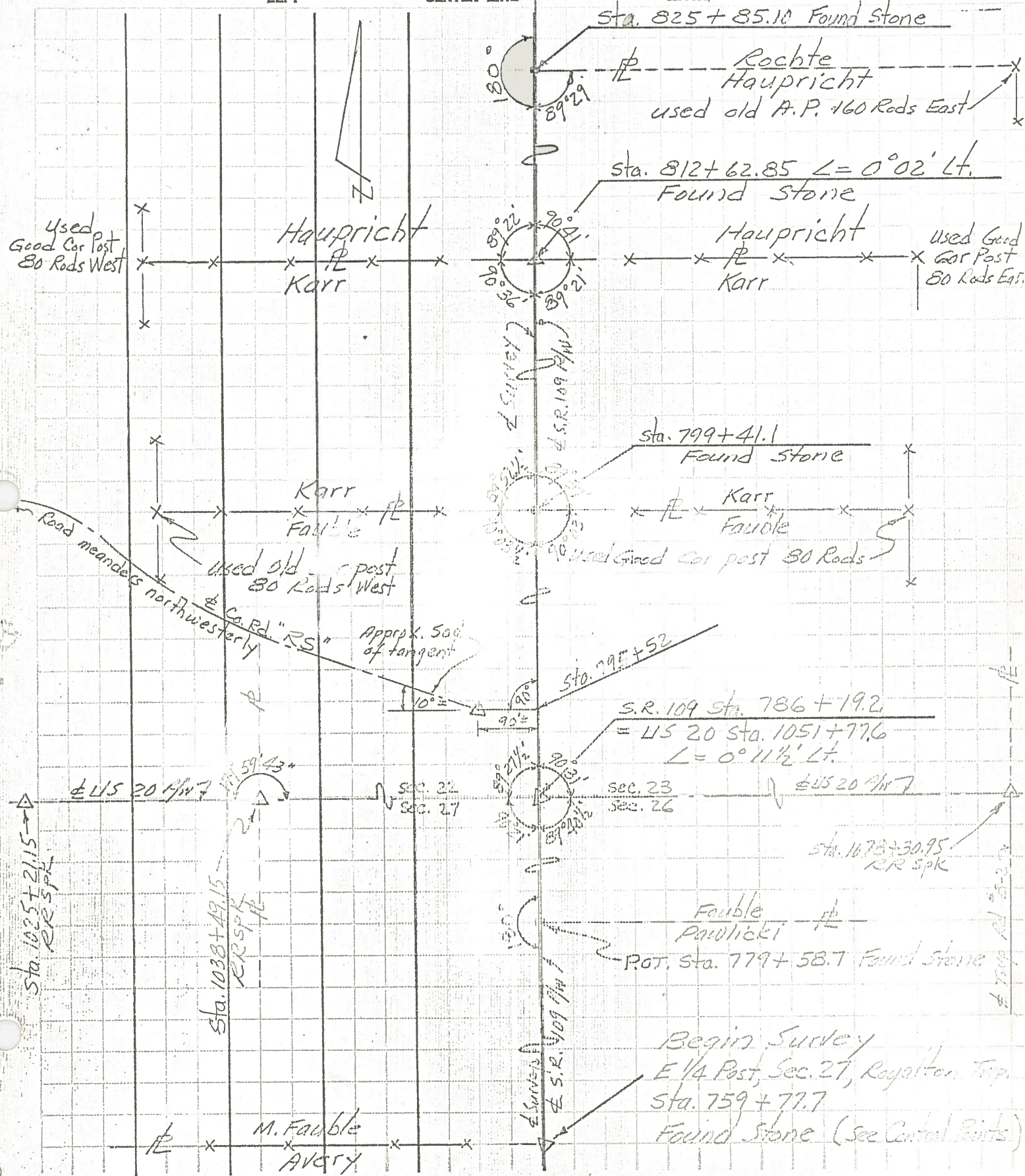
PERSONNEL	TITLE	PERSONNEL	TITLE
Tomsic		Boyle	
Neuser			
Granata			
Van Dyke			

COUNTY Fulton DATE July 23, 1973
 S. R. 109 WEATHER _____
 SEC. Royalton TWP TEMP. _____

DESCRIPTION _____ LEFT _____ CENTER LINE _____ RIGHT _____ JOB NO. _____



PERSONNEL	TITLE	PERSONNEL	TITLE	COUNTY	DATE
Red Beach				Fulton	1963
Armbruster				S. R.	109
Knope				WEATHER	
Mahler				SEC.	14.89-18.02
TEMP.					
DESCRIPTION	ALIGNMENT & PROPERTY LINES			JOB NO.	
	LEFT	CENTER LINE	RIGHT		



PERSONNEL TITLE PERSONNEL TITLE

Beach
Armbruster
Knappe
Mehler

COUNTY Fulton DATE Dec 1962

S. R. 109 WEATHER

SEC. 14.89-18.02 TEMP.

DESCRIPTION CONTROL POINTS JOB NO.

LEFT

CENTER LINE

RIGHT

