

O.D.O.T. DISTRICT 2 SURVEY OFFICE (USE ONLY)

PERSONNEL

REFERENCE NO. 42

SHEET 4 OF 9

NOTES TRENKA
 H.C. O'DONNELL
 R.C. TRENKA

DATE 6/19/18
 WEATHER CLOUDY
 TEMP. 73°

ROUTE SR 109
 COUNTY FULTON
 TOWNSHIP ROYALTON
 SECTION 23

DWG BY MILLER PID 102802

T 9 S R 3 E

TYPE MONUMENT MONBOX W/ 3/4" IPIN

ON SURFACE - BELOW _____

OFFSET \varnothing PAVEMENT ON LT : RT

_____ TO _____ EDGE PAVEMENT

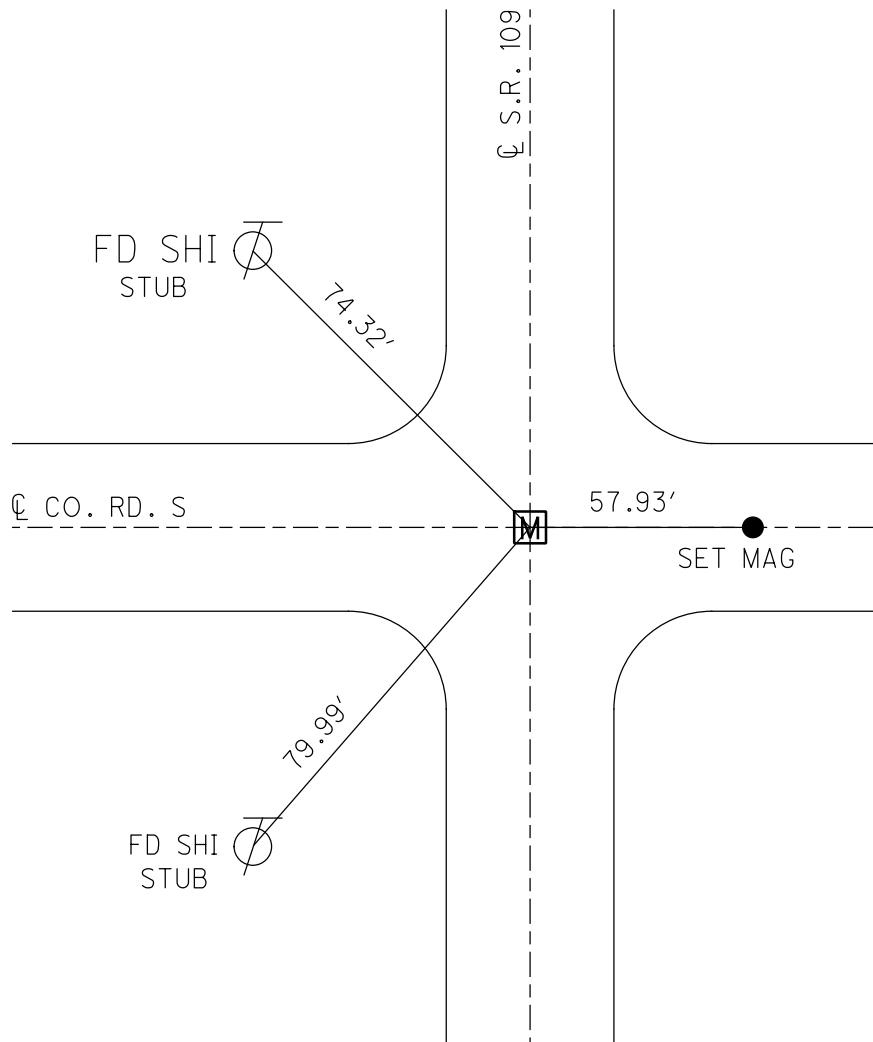
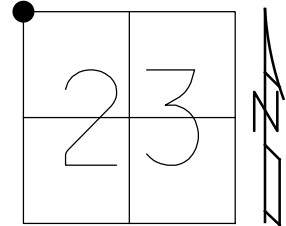
STATION: 838+53.46

HORIZ.DATUM: NAD83(2011)

GEOID: 2012A

GRID: NORTHING: 739177.296

EASTING: 1548851.837



RECORD:
 FD MONBOX
 W/ "X" ON LID
 REF42
 1-30-17, JFO
 COULD NOT OPEN
 5-2-18, JFO
 FD STONE
 SHOT HIGH POINT
 NEWREF42
 6-19-18
 SET 3/4" IPIN
 IN MONBOX
 8-8-18, JFO

O.D.O.T. DISTRICT 2 SURVEY OFFICE

PERSONNEL

REFERENCE NO. 42

SHEET 5 OF 10

NOTES LOEHRKE

H.C. ROMETO

R.C. CANTERBURY

CORDS

DATE 7-15-93

WEATHER Pt Cloudy

TEMP. +80

ROUTE S.R. 109

COUNTY Fulton

TOWNSHIP Royalton

SECTION 23

T 9 S R 3 E

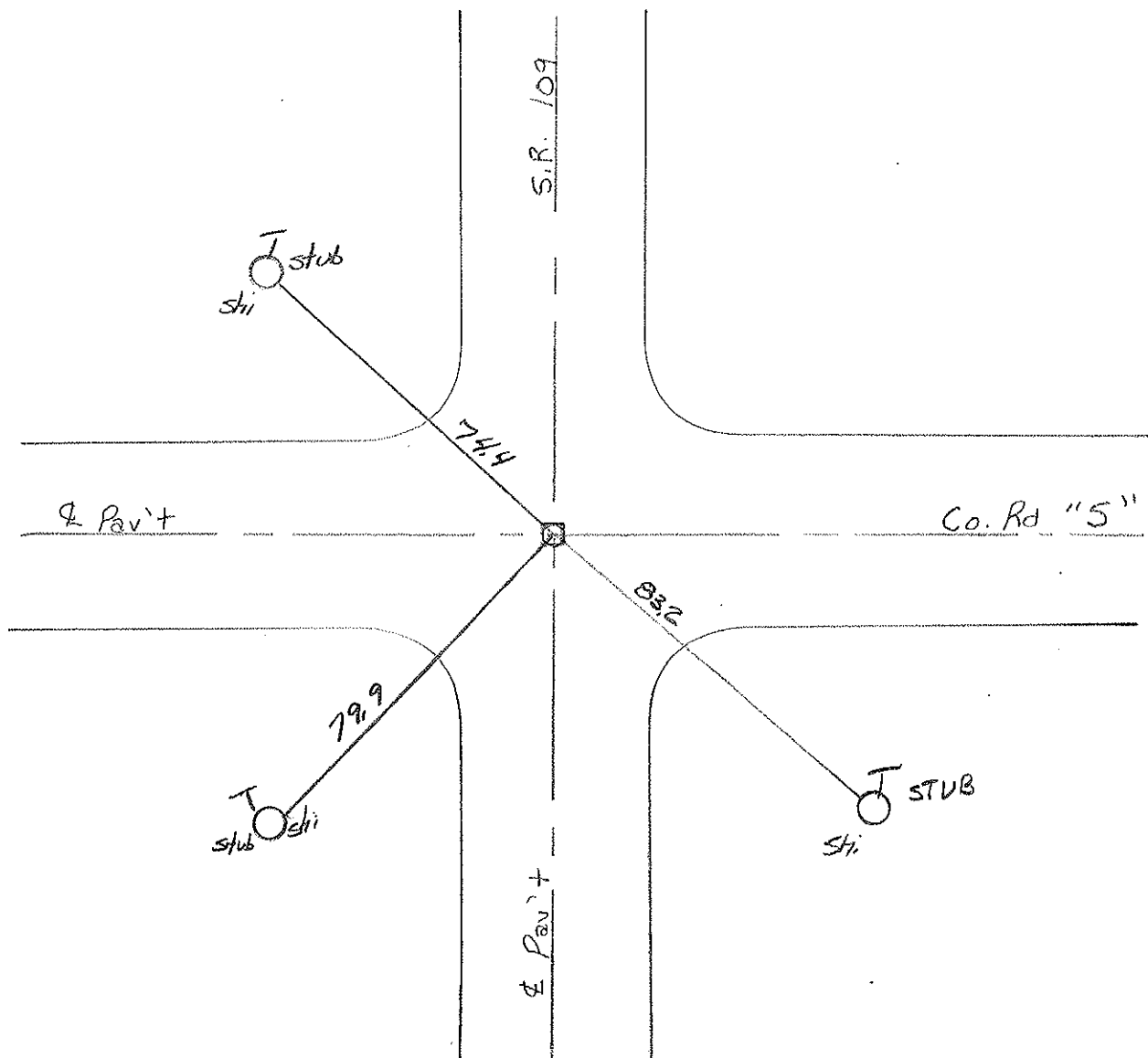
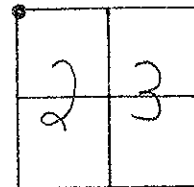
TYPE MONUMENT Mon. Box

ON SURFACE - BELOW Yes

~~LEFT~~ - PAV'T. - RIGHT Yes

- TO - EDGE PAVEMENT

S.L.M. 8387 49



ODOT DISTRICT 2 SURVEY OFFICE

SHEET

OF

County FULTON S.R. 109

Date 5-26-81

Township ROYALTON

Weather PARTLY CLOUDY

Section 23

Temp. +70°

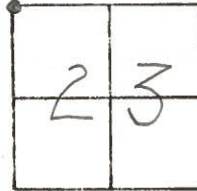
T9 R3E

Personnel HOFFMAN

HOUSEHOLDER

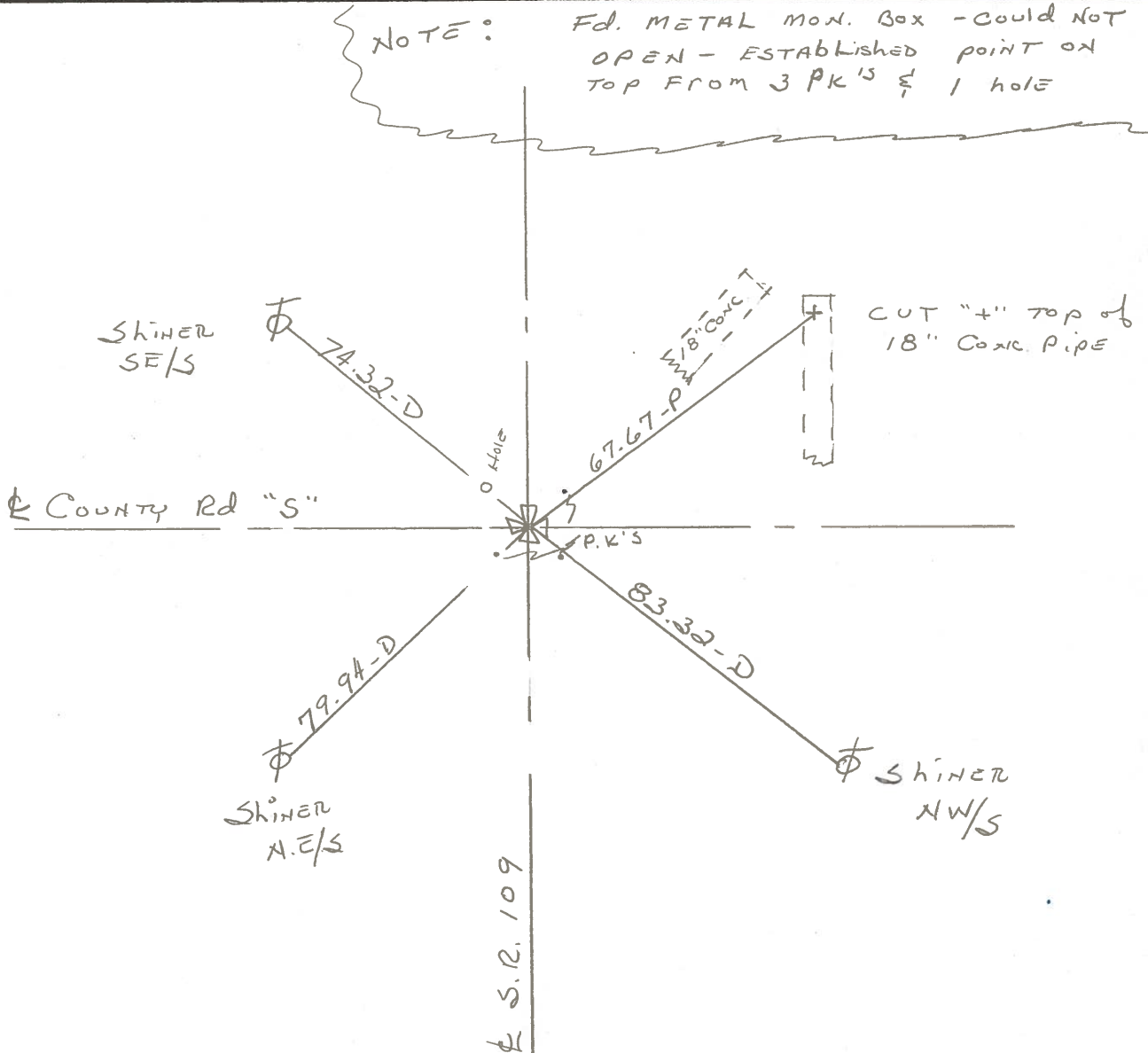
LOEHRKE

#42



NOTE:

Fd. METAL MON. Box - could NOT OPEN - ESTABLISHED POINT ON TOP FROM 3 P.K.'S & 1 hole



PERSONNEL	TITLE	PERSONNEL	TITLE	COUNTY	DATE	WEATHER	TEMP.
Tomsic		Boyle		Fulton	JULY 23, 1973		
Neuser				S. R. 109			
Granada				SEC. Royalton TWP			
Vanni							

DESCRIPTION _____ LEFT _____ CENTER LINE _____ RIGHT _____ JOB NO. _____

