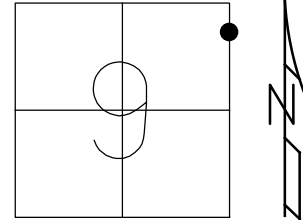


O.D.O.T. DISTRICT 2 SURVEY OFFICE (USE ONLY)

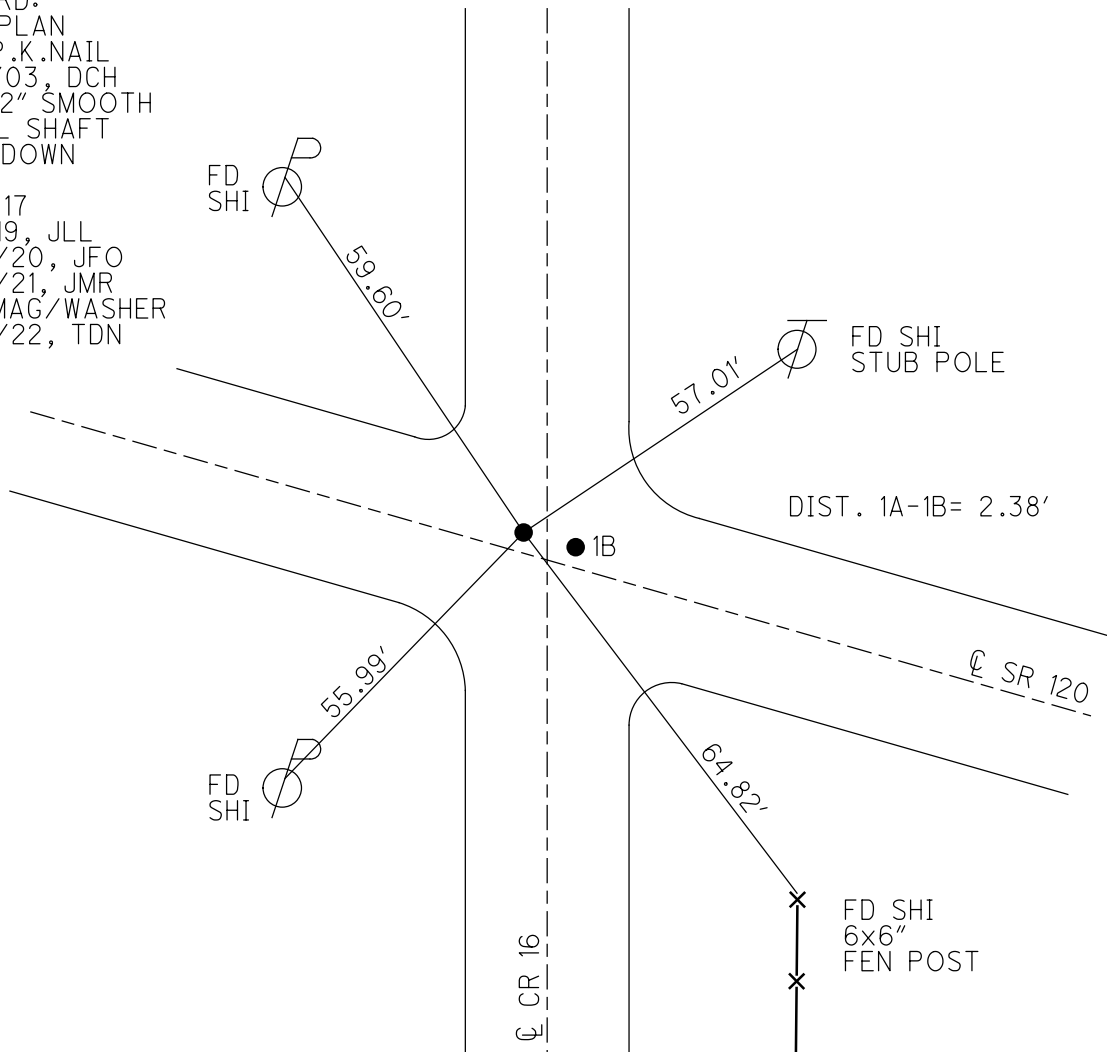
PERSONNEL	REFERENCE NO.	<u>1 A</u>	SHEET	<u>2</u>	OF	<u>50</u>
NOTES	<u>NIESE</u>	DATE	<u>4/27/22</u>	ROUTE	<u>SR 120</u>	
H.C.	<u>O'DONNELL</u>	WEATHER	<u>BREEZY</u>	COUNTY	<u>FULTON</u>	
R.C.	<u>AUBLE</u>	TEMP.	<u>37°</u>	TOWNSHIP	<u>CHESTERFIELD</u>	
	<u>PARADYSZ</u>			SECTION	<u>9</u>	
DWG BY	<u>RHOADES</u>	PID	<u>99582</u>	<u>T 9 N</u>	<u>R 2 E</u>	

TYPE MONUMENT 1/2" SMOOTH METAL SHAFT  
~~ON SURFACE~~ - BELOW 3/4"  
 OFFSET Q PAVEMENT 1.5' LT : ~~RT~~  
- TO - EDGE PAVEMENT  
 STATION: 7+86



HORZ. DATUM: NAD83 2011 GEOID: NAVD88 2012A  
 GRID: NORTHING: 749196.580 EASTING: 1511697.078

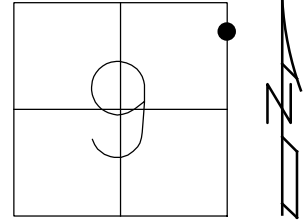
RECORD:  
 1926 PLAN  
 SET P.K.NAIL  
 11/17/03, DCH  
 FD 1/2" SMOOTH  
 METAL SHAFT  
 3/4" DOWN  
 REFA1  
 5/12/17  
 5/7/19, JLL  
 9/22/20, JFO  
 2/26/21, JMR  
 SET MAG/WASHER  
 7/26/22, TDN



O.D.O.T. DISTRICT 2 SURVEY OFFICE (USE ONLY)

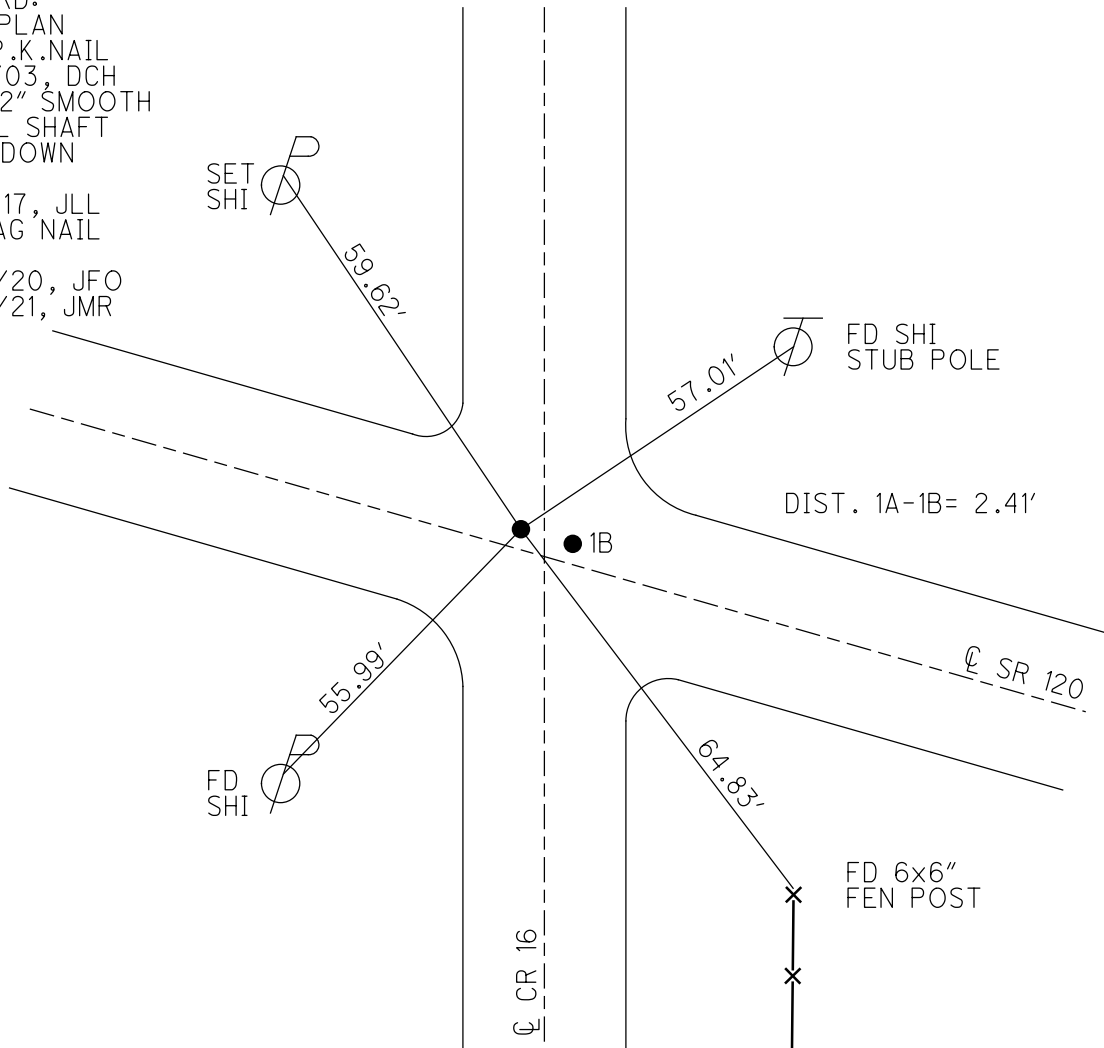
PERSONNEL \_\_\_\_\_ REFERENCE NO. 1 A SHEET 2 OF 47  
 NOTES NIESE DATE 2/26/21 ROUTE SR 120  
 H.C. RHOADES WEATHER FAIR COUNTY FULTON  
 R.C. \_\_\_\_\_ TEMP. 30° TOWNSHIP CHESTERFIELD  
 DWG BY NIESE PID PAVETRAIN SECTION 9  
 T 9 N R 2 E

TYPE MONUMENT MAG NAIL  
~~ON SURFACE~~ - BELOW 3/4"  
 OFFSET 1.5' LT : ~~RT~~  
 - TO - EDGE PAVEMENT  
 STATION: 7+86



HORIZ. DATUM: NAD83 2011 GEOID: NAVD88 2012A  
 GRID: NORTHING: 749196.519 EASTING: 1511697.125

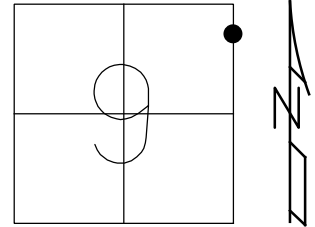
RECORD:  
 1926 PLAN  
 SET P.K.NAIL  
 11/17/03, DCH  
 FD 1/2" SMOOTH  
 METAL SHAFT  
 3/4" DOWN  
 REFA1  
 5/12/17, JLL  
 FD MAG NAIL  
 REFA1  
 9/22/20, JFO  
 2/26/21, JMR



O.D.O.T. DISTRICT 2 SURVEY OFFICE (USE ONLY)

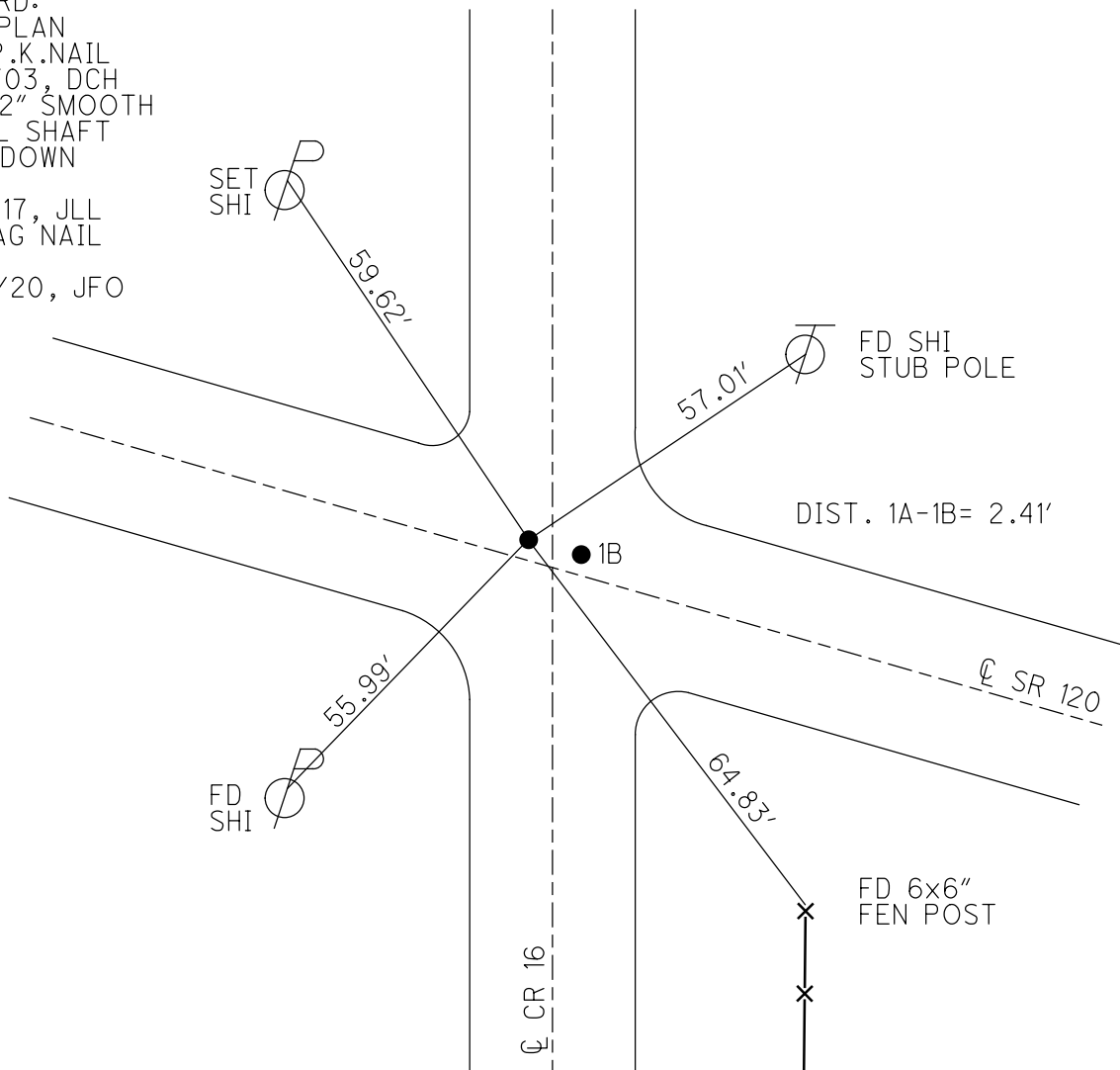
PERSONNEL \_\_\_\_\_ REFERENCE NO. 1 A SHEET 2 OF 47  
 NOTES RHOADES DATE 9/22/20 ROUTE SR 120  
 H.C. O'DONNELL WEATHER SUNNY COUNTY FULTON  
 R.C. AUBLE TEMP. 51° TOWNSHIP CHESTERFIELD  
 DWG BY RHOADES PID PAVETRAIN SECTION 9  
 T 9 N R 2 E

TYPE MONUMENT MAG NAIL  
~~ON SURFACE~~ - BELOW 3/4"  
 OFFSET Q PAVEMENT 1.5' LT : RT  
- TO - EDGE PAVEMENT  
 STATION: 7+86



HORIZ. DATUM: NAD83 2011 GEOID: NAVD88 2012A  
 GRID: NORTHING: 749196.519 EASTING: 1511697.125

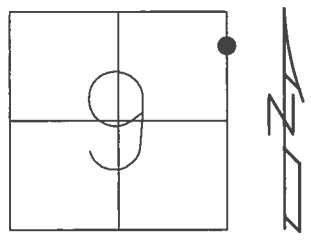
RECORD:  
 1926 PLAN  
 SET P.K.NAIL  
 11/17/03, DCH  
 FD 1/2" SMOOTH  
 METAL SHAFT  
 3/4" DOWN  
 REFA1  
 5/12/17, JLL  
 FD MAG NAIL  
 REFA1  
 9/22/20, JFO



O.D.O.T. DISTRICT 2 SURVEY OFFICE (USE ONLY)

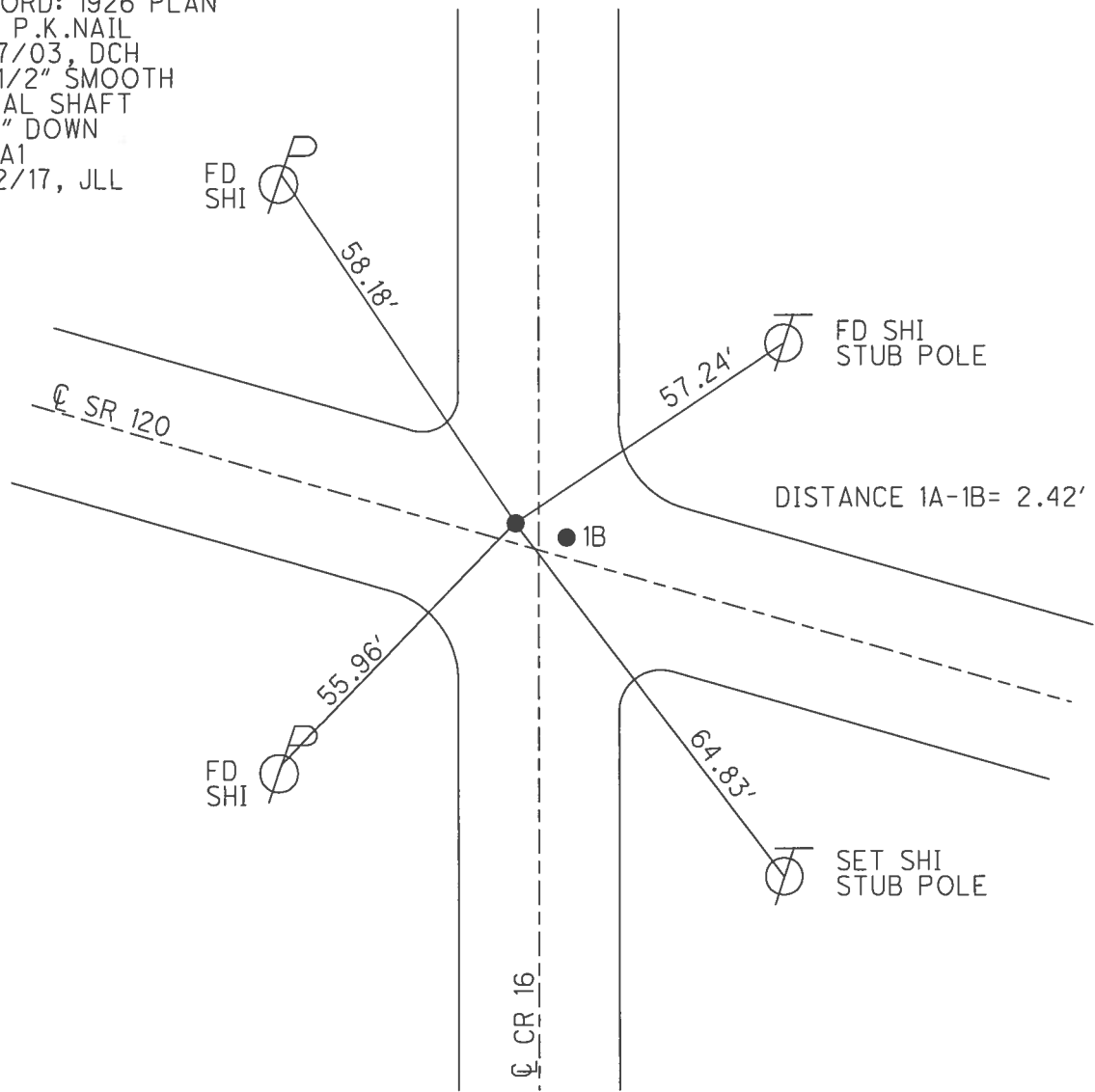
PERSONNEL	REFERENCE NO.	<u>1 A</u> SHEET	<u>2</u> OF <u>45</u>
NOTES	DATE	ROUTE	
H.C.	11/17/03	SR 120	
R.C.	WEATHER	COUNTY	
	CLOUDY	FULTON	
	TEMP.	TOWNSHIP	
	60°	CHESTERFIELD	
		SECTION	
		9	
		T <u>9</u> N R <u>2</u> E	

TYPE MONUMENT P.K.NAIL  
 ON SURFACE - ~~BELOW~~ ON \_\_\_\_\_  
 LEFT - ☉ PAV'T - ~~RIGHT~~ 1.5'  
 \_\_\_\_\_ TO \_\_\_\_\_ EDGE PAVEMENT  
 S.L.M. 7+86



GRID: NORTHING: 749196.58 EASTING: 1511697.078

RECORD: 1926 PLAN  
 SET P.K.NAIL  
 11/17/03, DCH  
 FD 1/2" SMOOTH  
 METAL SHAFT  
 3/4" DOWN  
 REFA1  
 5/12/17, JLL



Resurfaced 2002

ALSO see FILE # FUL-69  
& Re-established per 1926 Plan 2003

### O.D.O.T. DISTRICT 2 SURVEY OFFICE

PERSONNEL

REFERENCE NO. 1

SHEET 1 OF     

NOTES 1. Stone

H.C. D. Curtis

DATE 12 June 90

ROUTE SR#120

R.C. J. Haushalter

WEATHER Fair

COUNTY Fulton

TEMP. 68°

TOWNSHIP Clusterfield

SECTION 9

T      R     

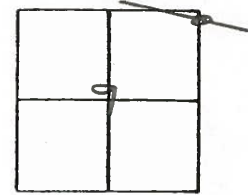
TYPE MONUMENT PK Nail

ON SURFACE - BELOW Surface

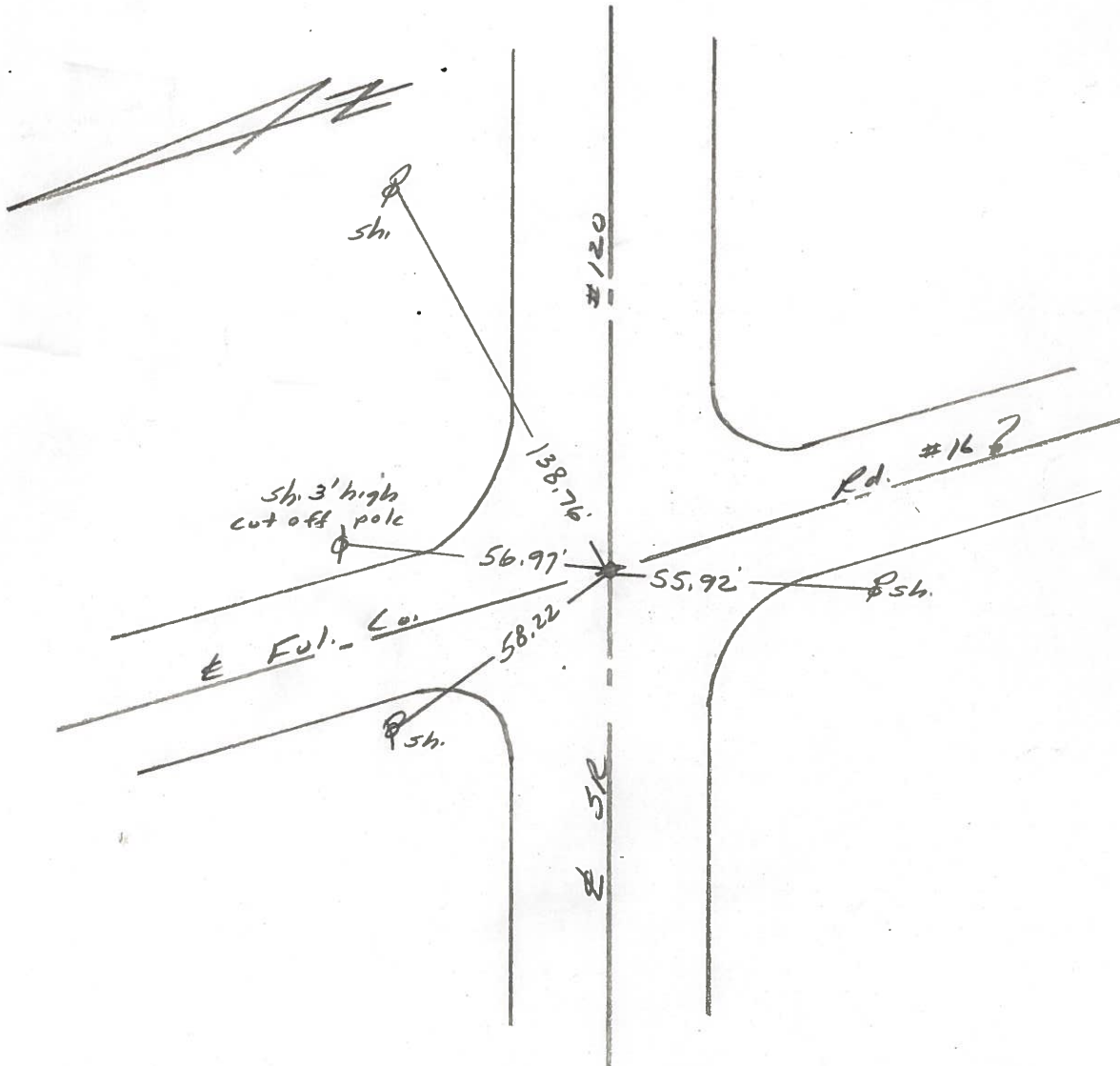
LEFT - & PAW'T. - RIGHT     

     TO      EDGE PAVEMENT

S.L.M. 7+98



Set PK Nail 8-8-90 IRS



O.D.O.T. DISTRICT 2 SURVEY OFFICE

PERSONNEL

REFERENCE NO. 1-B

10 SHEET a OF 12

NOTES HOMAN

DATE 11-17-03

ROUTE SR 120

H.C. HOMAN

WEATHER CLOUDY

COUNTY FULTON

R.C. BRUMBAUGH

TEMP. 60°

TOWNSHIP CHESTERFI

SECTION 9

T 9 S R 2 E

TYPE MONUMENT

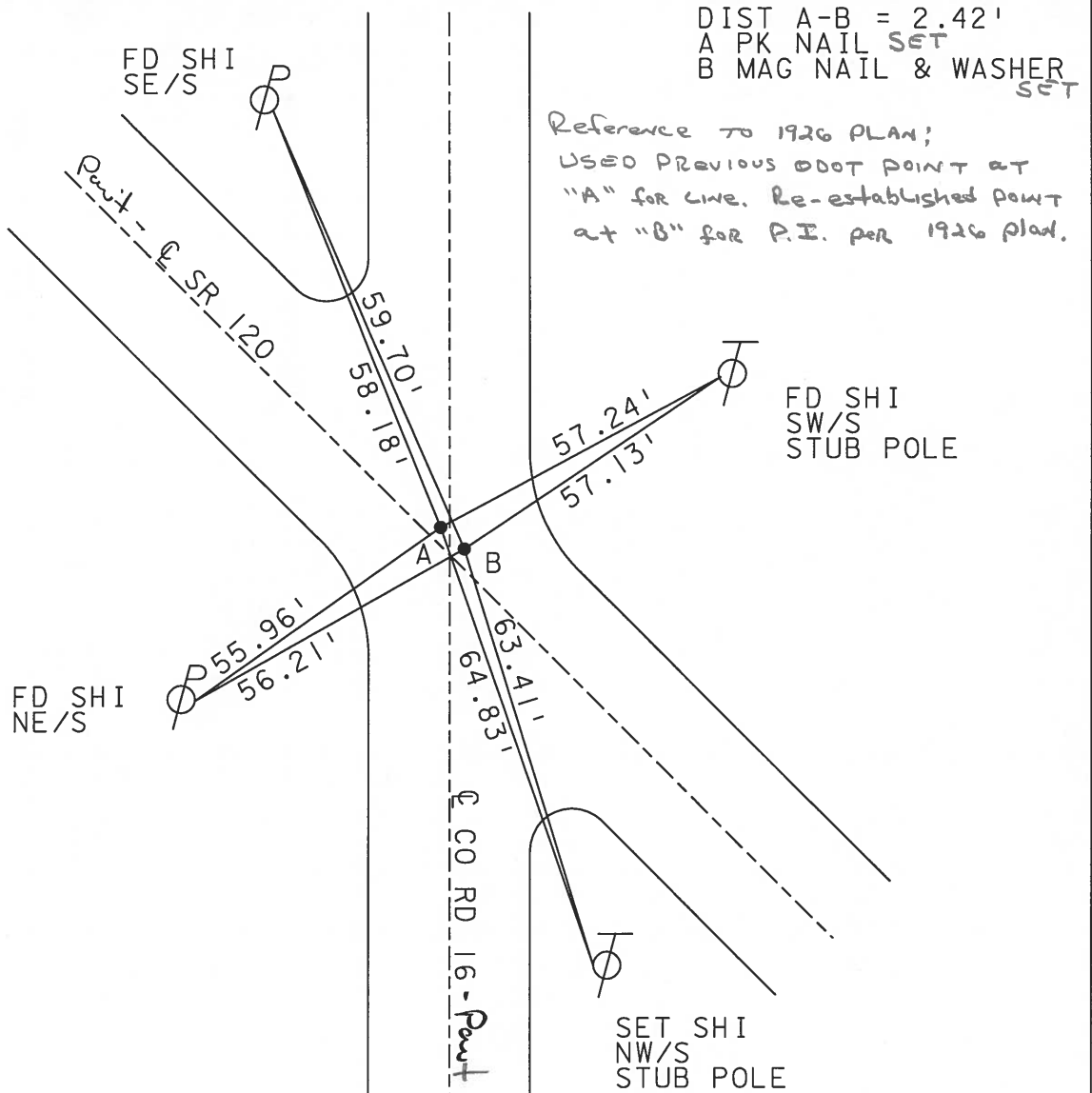
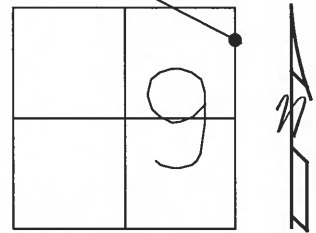
A OLD ODOT REF POINT  
B NEW  $\odot$  PI POINT

ON SURFACE - ~~BELOW~~ ON

LEFT - ~~C~~ PAVT - ~~RIGHT~~ BOTH 1.5'

TO EDGE PAVEMENT

S.L.M. 7+86



O.D.O.T. DISTRICT 2 SURVEY OFFICE

SHEET 1 OF 20

County Fulton S.R. 120

Township Chesterfield

Section 9

T N, R E

Personnel I. Stone

P. Newser

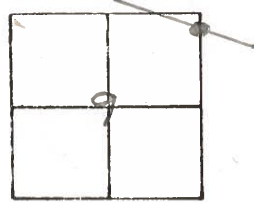
R. Michalek

D. Curtis

Date 29 Aug. 83

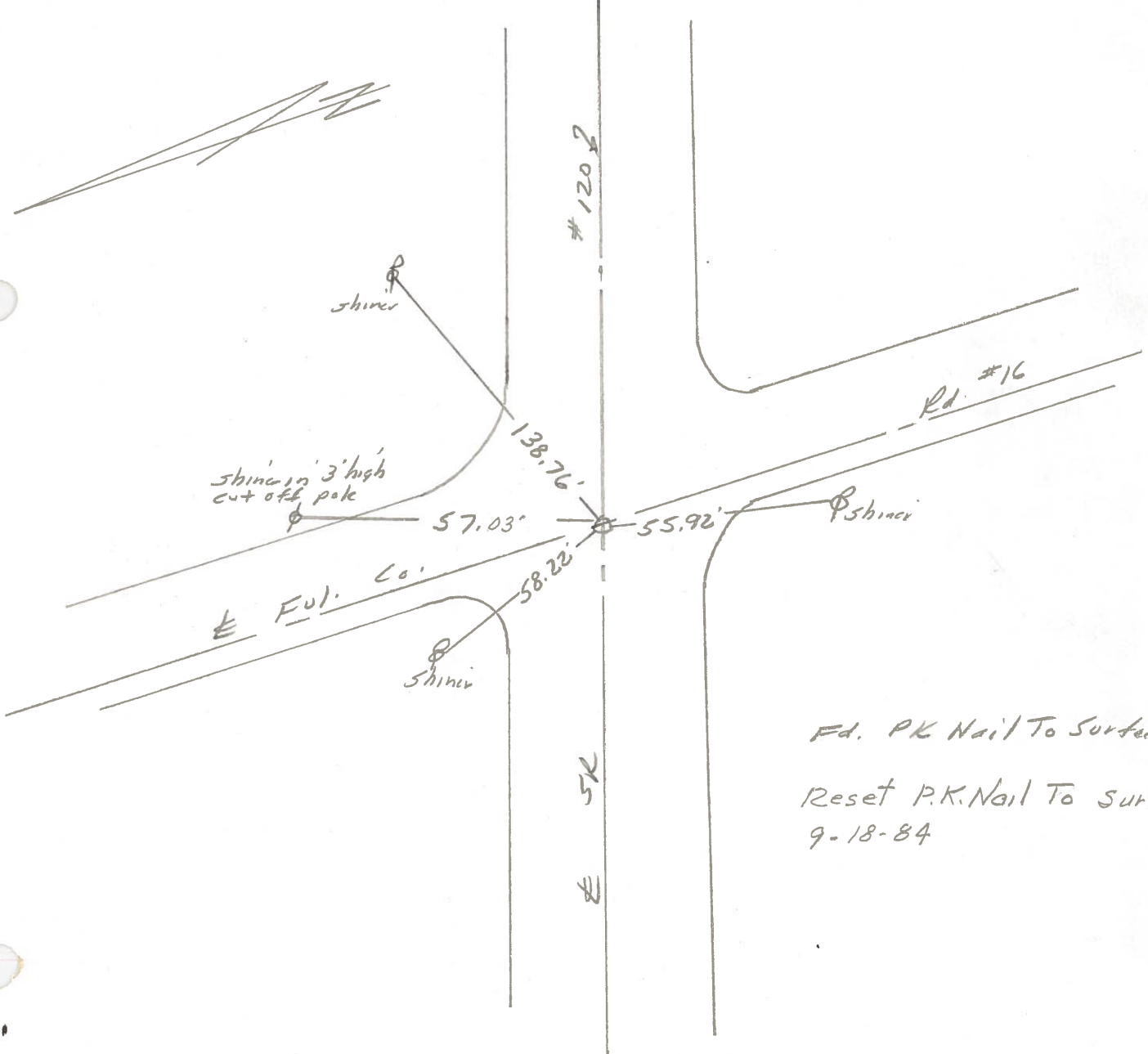
Weather Warm

Temp. 83°



SLM Sta. 7+94

Ref. No. 1



Ed. PK Nail To Surface

Reset P.K. Nail To Surface -  
9-18-84



PERSONNEL	TITLE	PERSONNEL	TITLE
TOM SIC			
GRANATA			
VAN DYK			

COUNTY Fulton DATE JUNE 28, 1973  
 S. R. 120 WEATHER \_\_\_\_\_  
 SEC. Chesterfield Twp TEMP. \_\_\_\_\_

DESCRIPTION \_\_\_\_\_ LEFT \_\_\_\_\_ CENTER LINE \_\_\_\_\_ RIGHT \_\_\_\_\_ JOB NO. \_\_\_\_\_

