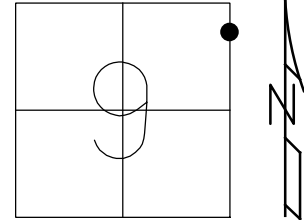


O.D.O.T. DISTRICT 2 SURVEY OFFICE (USE ONLY)

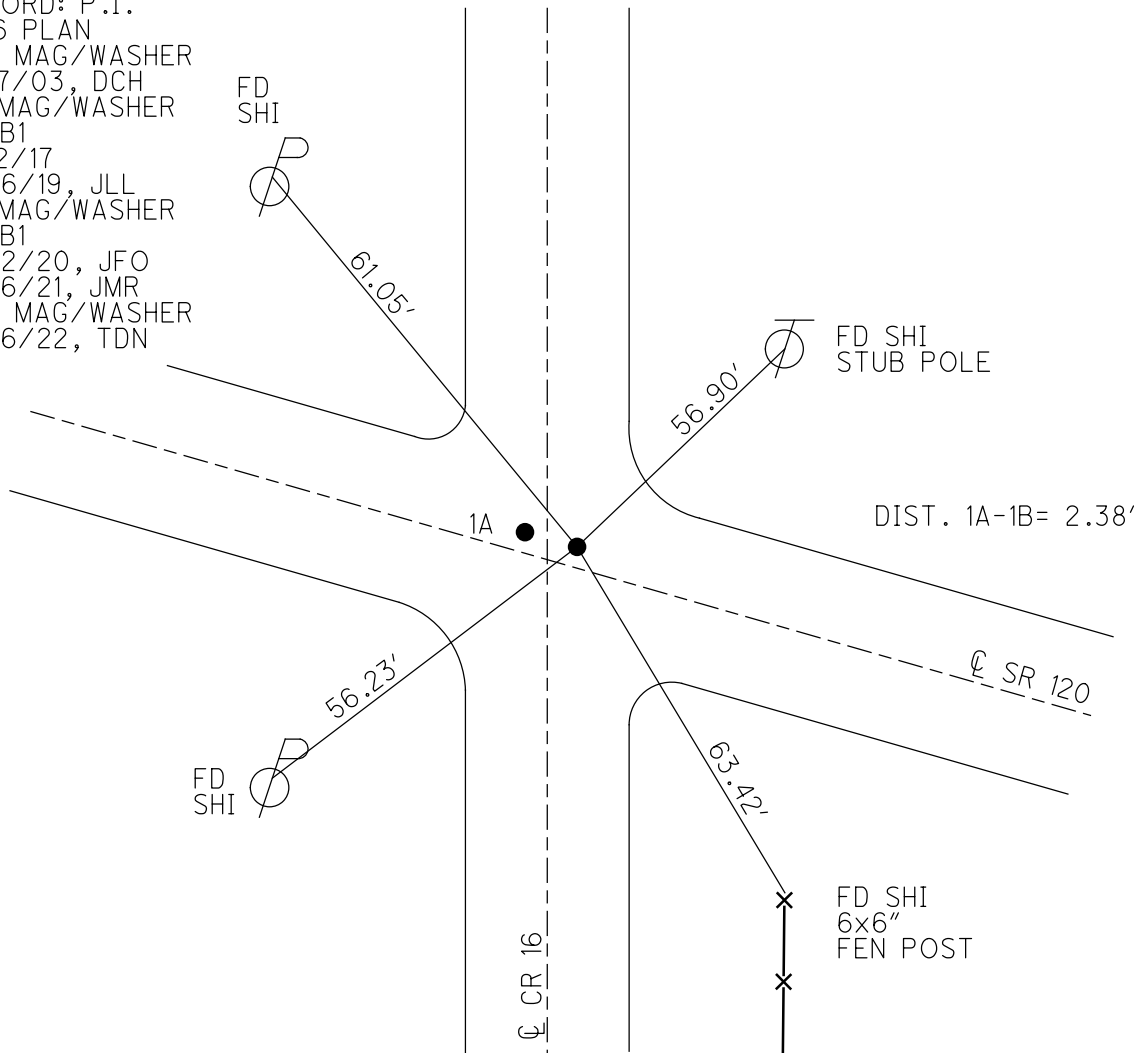
PERSONNEL _____ REFERENCE NO. 1 B SHEET 3 OF 50
 NOTES NIESE DATE 4/27/22 ROUTE SR 120
 H.C. O'DONNELL WEATHER BREEZY COUNTY FULTON
 R.C. AUBLE TEMP. 37° TOWNSHIP CHESTERFIELD
PARADYSZ SECTION 9
 DWG BY RHOADES PID 99582 T 9 N R 2 E

TYPE MONUMENT MAG/WASHER
 ON SURFACE - ~~BELOW~~ ON
 OFFSET Q PAVEMENT 1.5' LT : RT
- TO - EDGE PAVEMENT
 STATION: 7+86



HORZ. DATUM: NAD83 2011 GEOID: NAVD88 2012A
 GRID: NORTHING: 749195.872 EASTING: 1511699.384

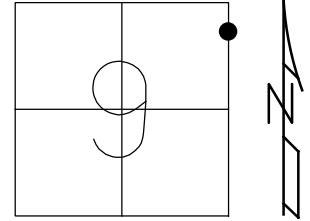
RECORD: P.I.
 1926 PLAN
 SET MAG/WASHER
 11/17/03, DCH
 FD MAG/WASHER
 REFB1
 5/12/17
 4/26/19, JLL
 FD MAG/WASHER
 REFB1
 9/22/20, JFO
 2/26/21, JMR
 SET MAG/WASHER
 7/26/22, TDN



O.D.O.T. DISTRICT 2 SURVEY OFFICE (USE ONLY)

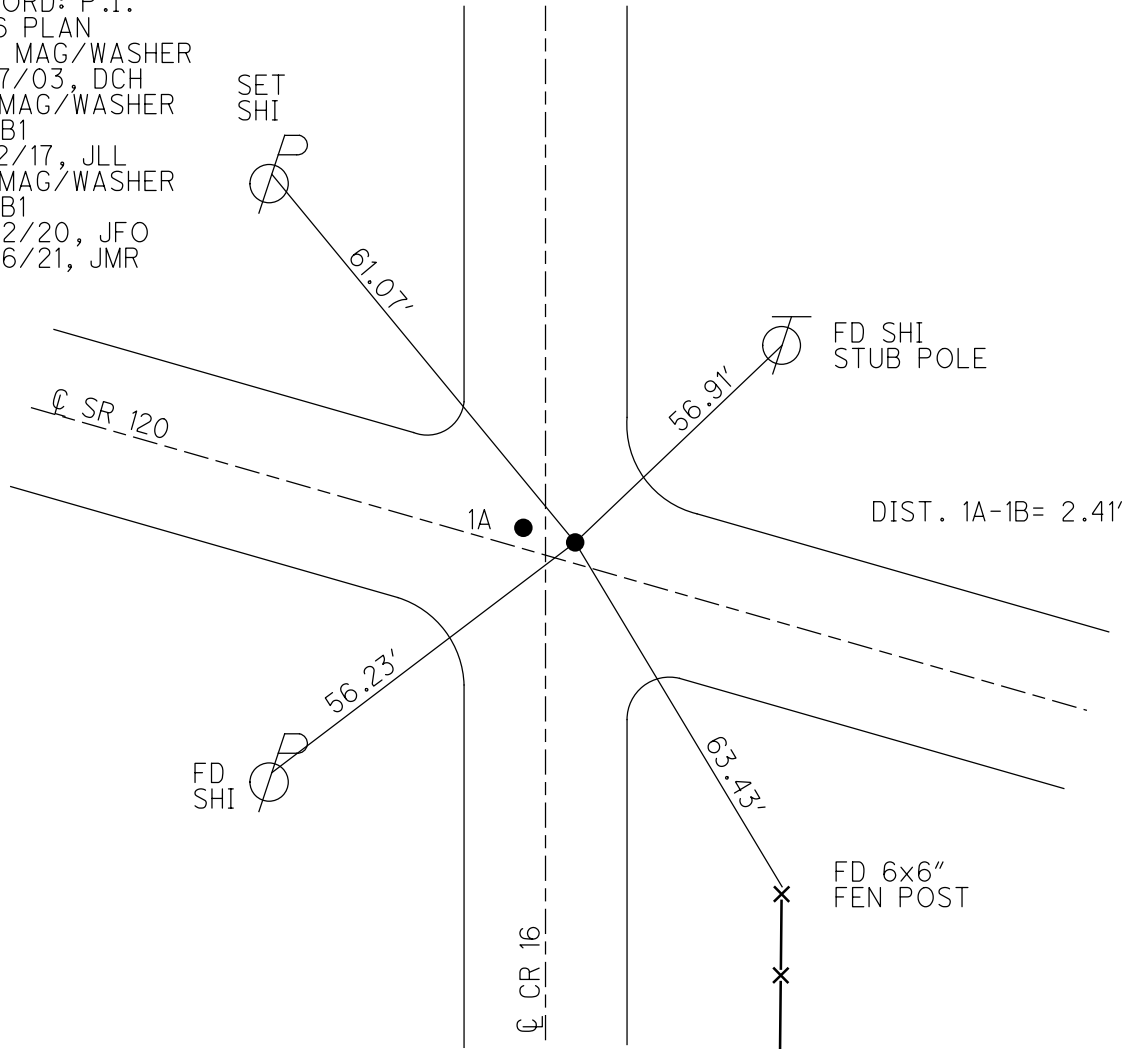
PERSONNEL _____ REFERENCE NO. 1 B SHEET 3 OF 47
 NOTES NIESE DATE 2/26/21 ROUTE SR 120
 H.C. RHOADES WEATHER FAIR COUNTY FULTON
 R.C. _____ TEMP. 30° TOWNSHIP CHESTERFIELD
 DWG BY NIESE PID PAVETRAIN SECTION 9
 T 9 N R 2 E

TYPE MONUMENT MAG/WASHER
 ON SURFACE - ~~BELOW~~ ON
 OFFSET C PAVEMENT 1.5' LT : RT
- TO - EDGE PAVEMENT
 STATION: 7+86



HORZ. DATUM: NAD83 2011 GEOID: NAVD88 2012A
 GRID: NORTHING: 749195.829 EASTING: 1511699.393

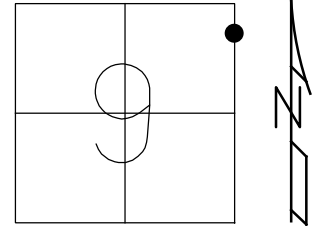
RECORD: P.I.
 1926 PLAN
 SET MAG/WASHER
 11/17/03, DCH
 FD MAG/WASHER
 REFB1
 5/12/17, JLL
 FD MAG/WASHER
 REFB1
 9/22/20, JFO
 2/26/21, JMR



O.D.O.T. DISTRICT 2 SURVEY OFFICE (USE ONLY)

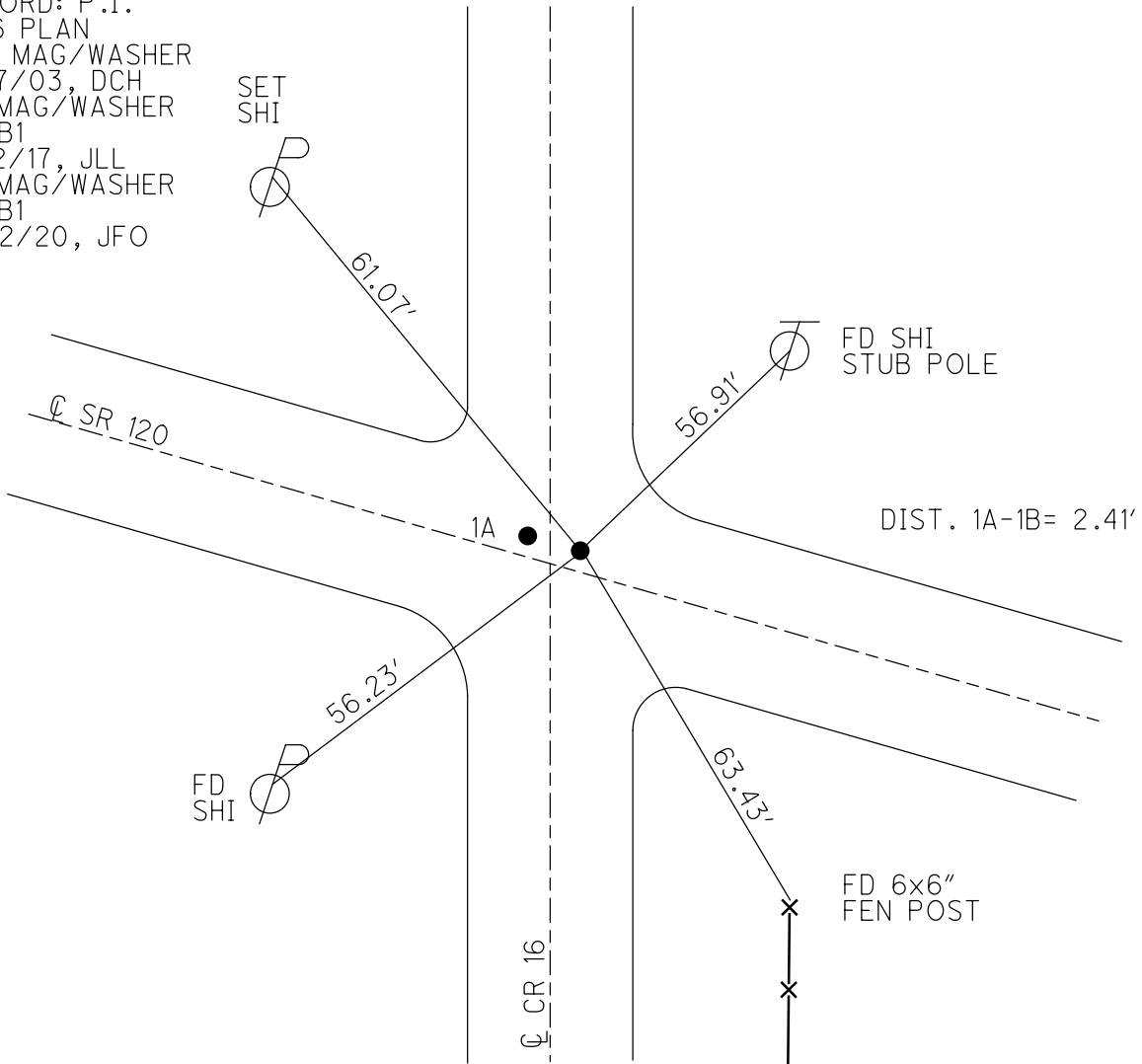
PERSONNEL _____ REFERENCE NO. 1 B SHEET 3 OF 47
 NOTES RHOADES DATE 9/22/20 ROUTE SR 120
 H.C. O'DONNELL WEATHER SUNNY COUNTY FULTON
 R.C. AUBLE TEMP. 51° TOWNSHIP CHESTERFIELD
 DWG BY RHOADES PID PAVETRAIN SECTION 9
 T 9 N R 2 E

TYPE MONUMENT MAG/WASHER
 ON SURFACE - ~~BELOW~~ ON
 OFFSET ☉ PAVEMENT 1.5' LT : RT
- TO - EDGE PAVEMENT
 STATION: 7+86



HORZ. DATUM: NAD83 2011 GEOID: NAVD88 2012A
 GRID: NORTHING: 749195.829 EASTING: 1511699.393

RECORD: P.I.
 1926 PLAN
 SET MAG/WASHER
 11/17/03, DCH
 FD MAG/WASHER
 REFB1
 5/12/17, JLL
 FD MAG/WASHER
 REFB1
 9/22/20, JFO

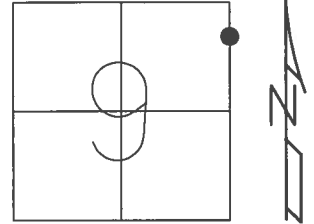


O.D.O.T. DISTRICT 2 SURVEY OFFICE (USE ONLY)

PERSONNEL _____ REFERENCE NO. 1 B SHEET 3 OF 45

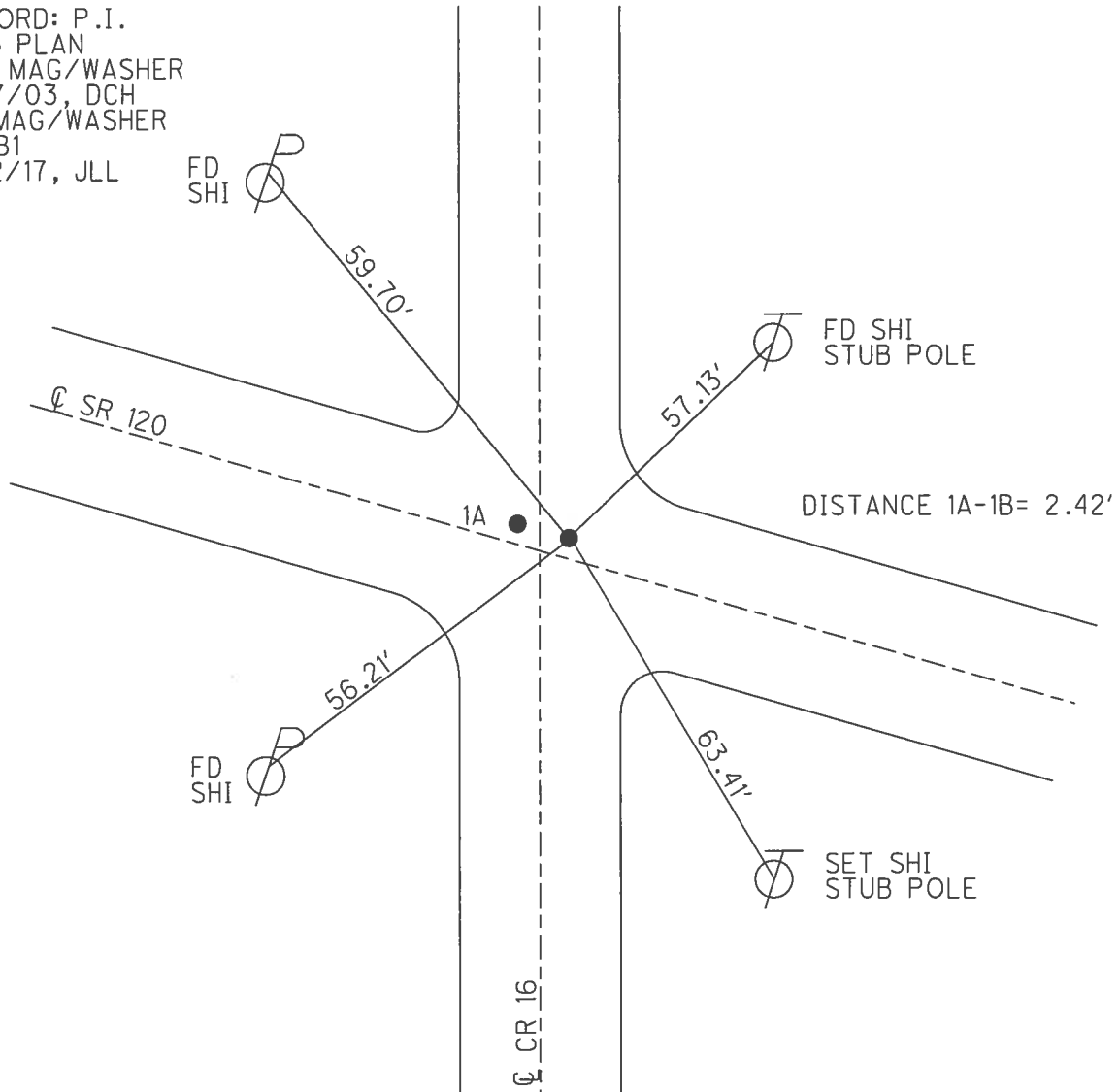
NOTES HOMAN DATE 11/17/03 ROUTE SR 120
 H.C. HOMAN WEATHER CLOUDY COUNTY FULTON
 R.C. BRUMBAUGH TEMP. 60° TOWNSHIP CHESTERFIELD
 _____ SECTION 9
 _____ T 9 N R 2 E

TYPE MONUMENT MAG/WASHER
 ON SURFACE - ~~BELOW~~ ON _____
 LEFT - ☉ PAV'T - ~~RIGHT~~ 1.5'
 - TO - _____ EDGE PAVEMENT
 S.L.M. 7+86



GRID: NORTHING: 749195.872 EASTING: 1511699.384

RECORD: P.I.
 1926 PLAN
 SET MAG/WASHER
 11/17/03, DCH
 FD MAG/WASHER
 REF B1
 5/12/17, JLL



O.D.O.T. DISTRICT 2 SURVEY OFFICE

PERSONNEL

REFERENCE NO. 1-B SHEET a OF 12

NOTES HOMAN

DATE 11-17-03

ROUTE SR 120

H.C. HOMAN

WEATHER CLOUDY

COUNTY FULTON

R.C. BRUMBAUGH

TEMP. 60°

TOWNSHIP CHESTER I

SECTION 9

T 9 S R 2 E

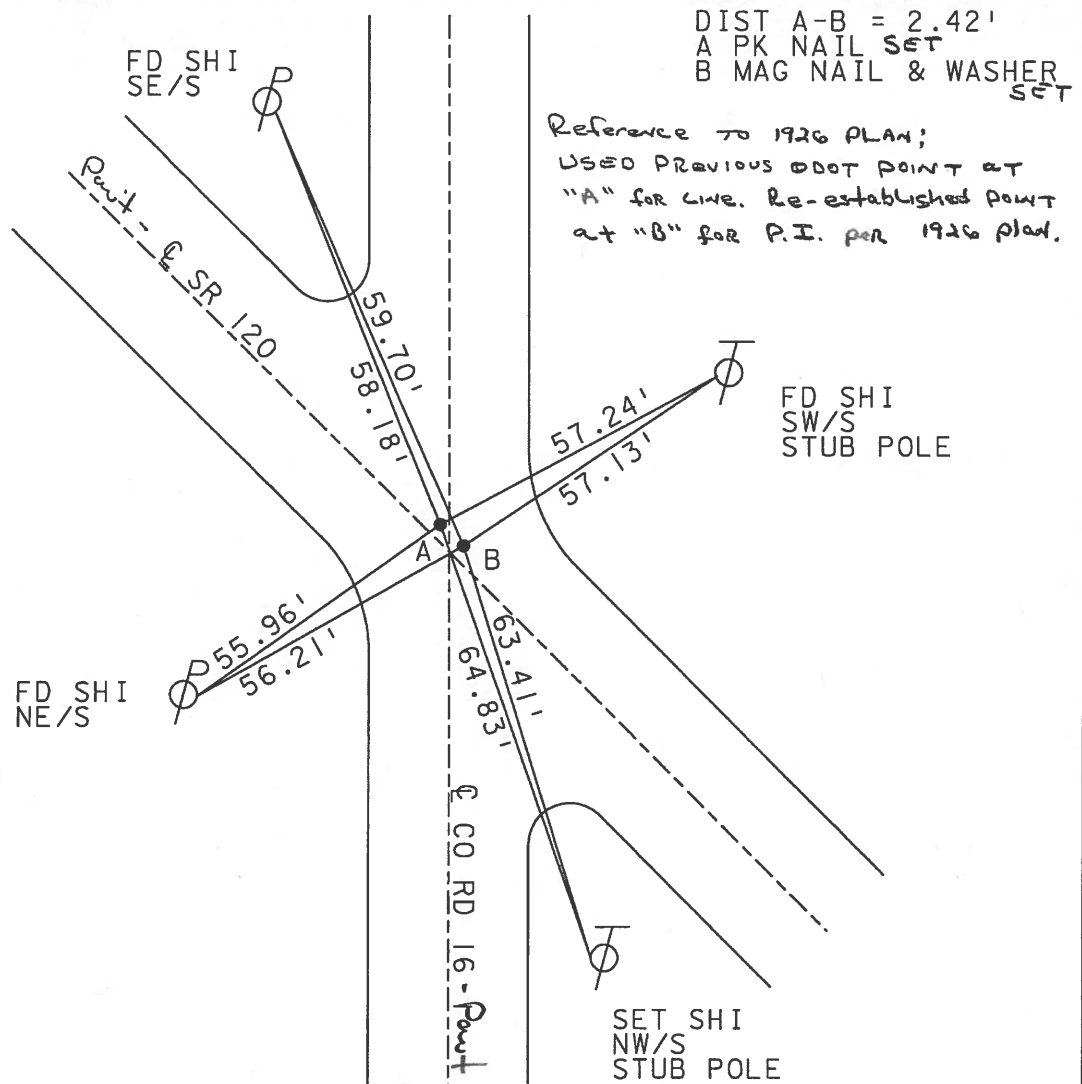
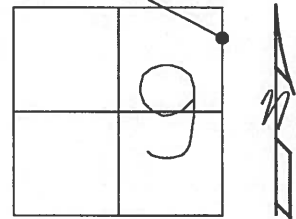
TYPE MONUMENT A OLD ODOT REF POINT
B NEW C PI POINT

ON SURFACE - ~~BELOW~~ ON

LEFT - ~~C PAVT~~ - ~~RIGHT~~ BOTH 1.5'

TO EDGE PAVEMENT

S.L.M. 7+86



PERSONNEL	TITLE	PERSONNEL	TITLE
THOMAS			
GRANATA			
NALLY			

COUNTY Fulton DATE JUNE 28, 1973

S. R. 120 WEATHER _____

SEC. Chesterfield Twp TEMP. _____

DESCRIPTION _____ LEFT _____ CENTER LINE _____ RIGHT _____ JOB NO. _____

