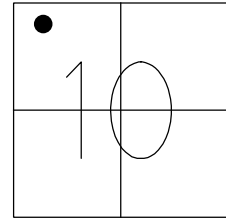


O.D.O.T. DISTRICT 2 SURVEY OFFICE (USE ONLY)

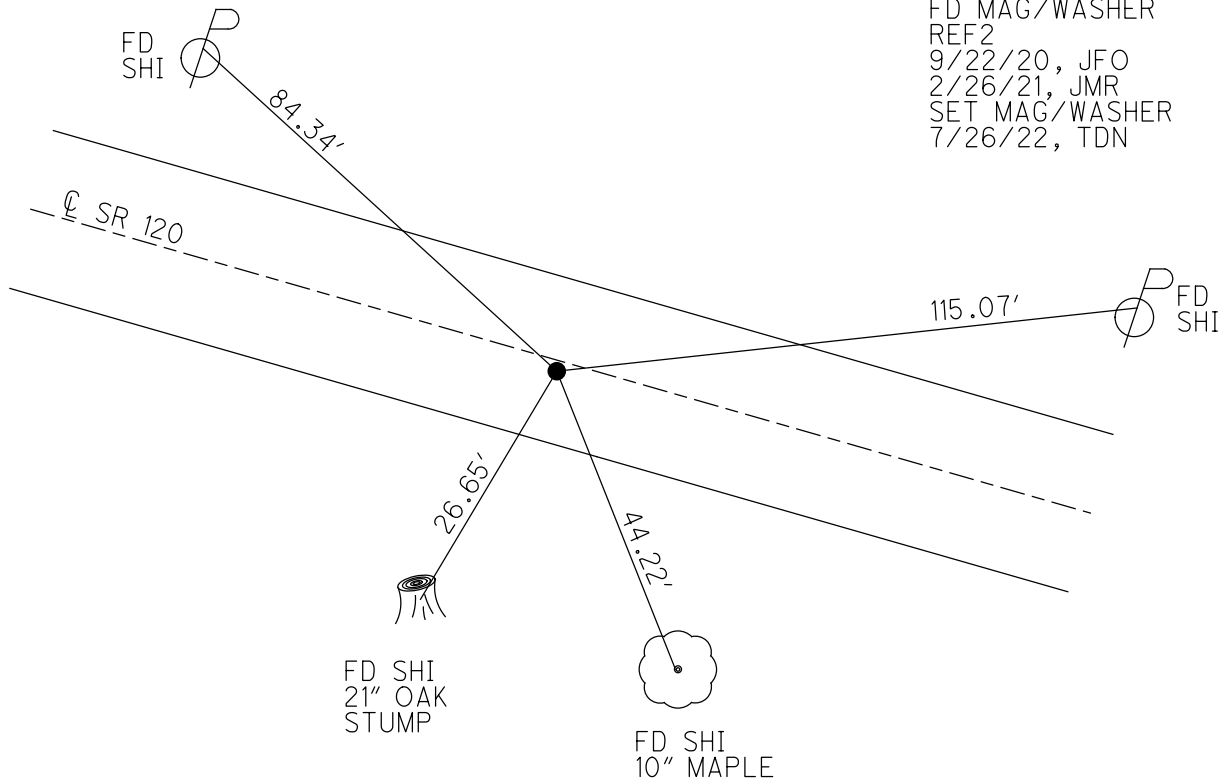
PERSONNEL _____ REFERENCE NO. 2 SHEET 4 OF 50
 NOTES NIESE _____ DATE 4/27/22 ROUTE SR 120
 H.C. O'DONNELL _____ WEATHER BREEZY COUNTY FULTON
 R.C. PARADYSZ _____ TEMP. 37° TOWNSHIP CHESTERFIELD
 AUBLE _____ SECTION 10
 DWG BY RHOADES PID 99582 T 9 N R 2 E

TYPE MONUMENT MAG/WASHER
 ON SURFACE - ~~BELOW~~ ON
 OFFSET 9.5' TO RT PAVEMENT 0.5' ~~LT~~ : RT
 EDGE PAVEMENT
 STATION: 25+00



HORZ. DATUM: NAD83 2011 GEOID: NAVD88 2012A
 GRID: NORTHING: 748665.810 EASTING: 1513329.417

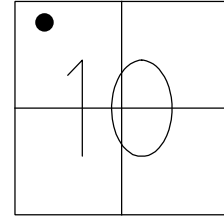
RECORD:
 1926 PLAN
 SET MAG/WASHER
 12/22/03, DCH
 FD MAG/WASHER
 REF2
 5/12/17
 4/26/19, JLL
 FD MAG/WASHER
 REF2
 9/22/20, JFO
 2/26/21, JMR
 SET MAG/WASHER
 7/26/22, TDN



O.D.O.T. DISTRICT 2 SURVEY OFFICE (USE ONLY)

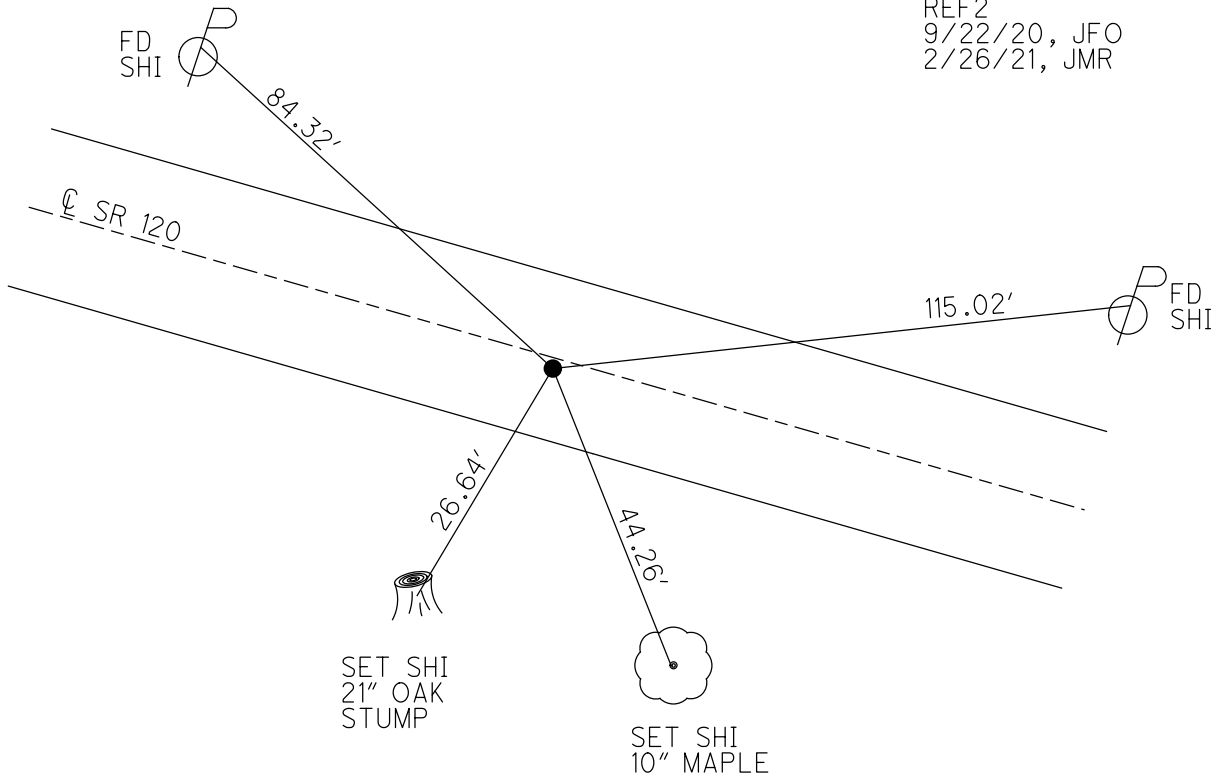
PERSONNEL _____ REFERENCE NO. 2 SHEET 4 OF 47
 NOTES NIESE _____ DATE 2/26/21 ROUTE SR 120
 H.C. RHOADES _____ WEATHER FAIR COUNTY FULTON
 R.C. _____ TEMP. 30° TOWNSHIP CHESTERFIELD
 DWG BY NIESE PID PAVETRAIN SECTION 10
 T 9 N R 2 E

TYPE MONUMENT MAG/WASHER
 ON SURFACE - ~~BELOW~~ ON
 OFFSET \odot PAVEMENT 0.5' ~~RT~~ : RT
9.5' TO RT EDGE PAVEMENT
 STATION: 25+00



HORZ. DATUM: NAD83 2011 GEOID: NAVD88 2012A
 GRID: NORTHING: 748665.810 EASTING: 1513329.422

RECORD:
 1926 PLAN
 SET MAG/WASHER
 12/22/03, DCH
 FD MAG/WASHER
 REF2
 5/12/17, JLL
 FD MAG/WASHER
 REF2
 9/22/20, JFO
 2/26/21, JMR



O.D.O.T. DISTRICT 2 SURVEY OFFICE (USE ONLY)

PERSONNEL _____ REFERENCE NO. 2 SHEET 4 OF 47

NOTES RHOADES DATE 9/22/20 ROUTE SR 120
 H.C. O'DONNELL WEATHER SUNNY COUNTY FULTON
 R.C. AUBLE TEMP. 51° TOWNSHIP CHESTERFIELD

DWG BY RHOADES PID PAVETRAN SECTION 10
 T 9 N R 2 E

TYPE MONUMENT MAG/WASHER

ON SURFACE - ~~BELOW~~ ON

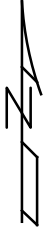
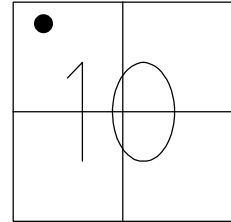
OFFSET Q PAVEMENT 0.5' ~~LT~~ : RT

9.5' TO RT EDGE PAVEMENT

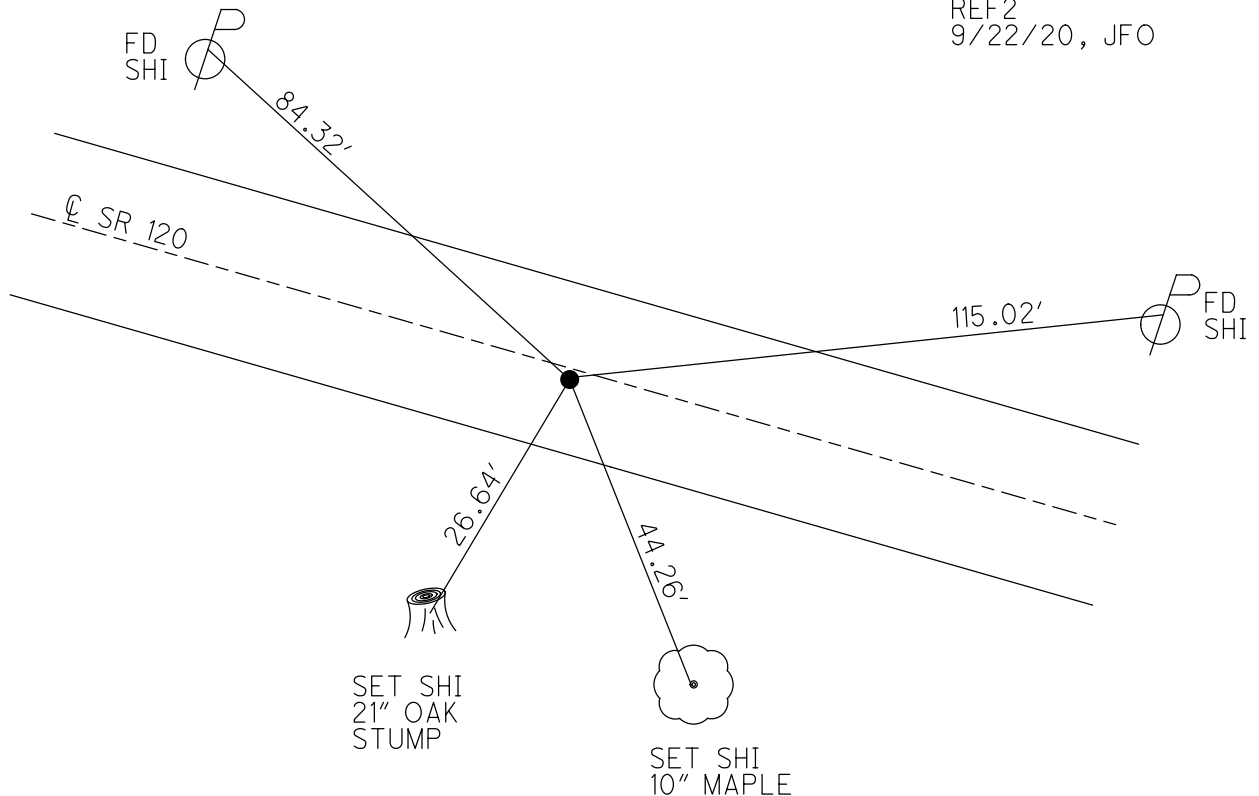
STATION: 25+00

HORZ. DATUM: NAD83 2011 GEOID: NAVD88 2012A

GRID: NORTHING: 748665.810 EASTING: 1513329.422



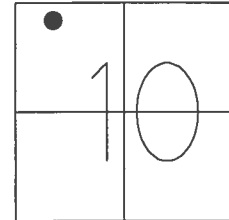
RECORD:
 1926 PLAN
 SET MAG/WASHER
 12/22/03, DCH
 FD MAG/WASHER
 REF2
 5/12/17, JLL
 FD MAG/WASHER
 REF2
 9/22/20, JFO



O.D.O.T. DISTRICT 2 SURVEY OFFICE (USE ONLY)

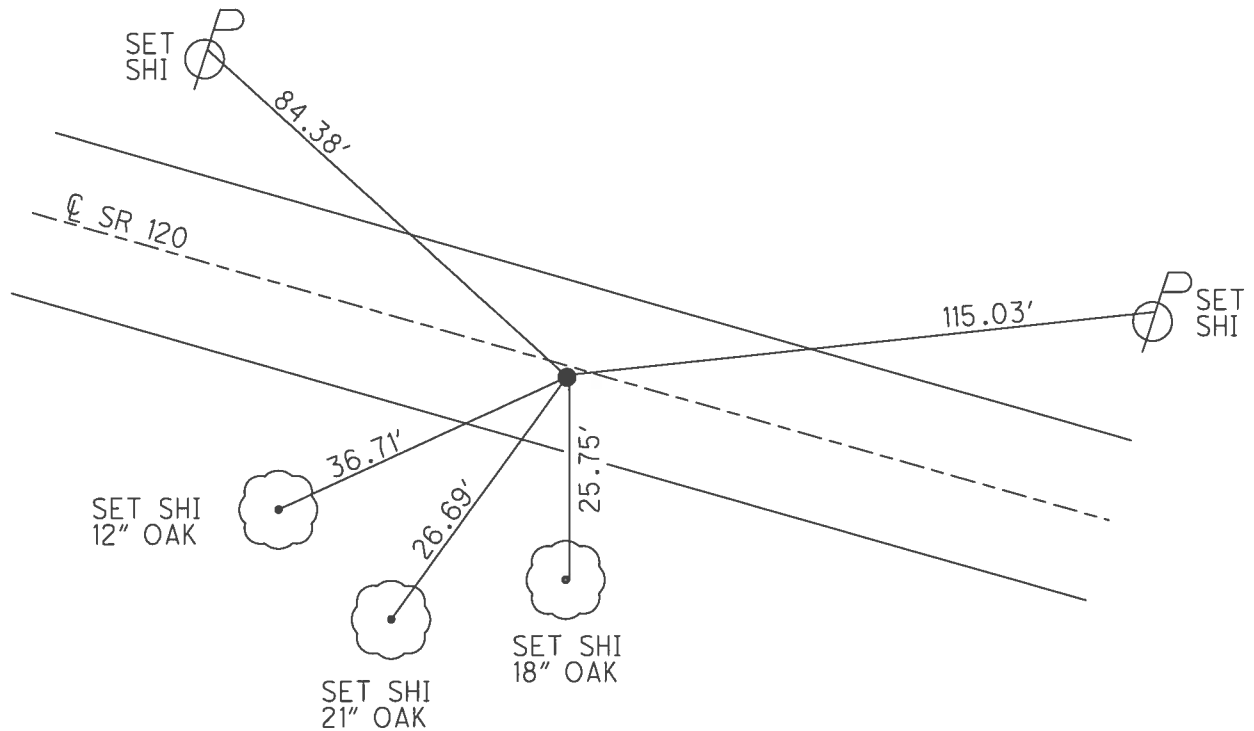
PERSONNEL _____ REFERENCE NO. 2 SHEET 4 OF 45
 NOTES HOMAN DATE 12/22/03 ROUTE SR 120
 H.C. HOMAN WEATHER CLOUDY COUNTY FULTON
 R.C. BALLMER TEMP. 41° TOWNSHIP CHESTERFIELD
 _____ SECTION 10
 _____ T 9 N R 2 E

TYPE MONUMENT MAG/WASHER
 ON SURFACE - ~~BELOW~~ ON _____
~~LEFT~~ - ℄ PAV'T - RIGHT 0.5'
9.5' TO RT EDGE PAVEMENT
 S.L.M. 25+00



GRID: NORTHING: 748665.810 EASTING: 1513329.417

RECORD:
 1926 PLAN
 SET MAG/WASHER
 12/22/03, DCH
 FD MAG/WASHER
 REF2
 5/12/17, JLL



O.D.O.T. DISTRICT 2 SURVEY OFFICE

PERSONNEL _____

REFERENCE NO. 2

SHEET 4 OF 45

NOTES HOMAN

DATE 12/22/03

ROUTE SR 120

H.C. HOMAN

WEATHER CLOUDY

COUNTY FULTON

R.C. BALLMER

TEMP. 41°

TOWNSHIP CHESTERFIELD

SECTION 10

T 9 N R 2 E

TYPE MONUMENT SET MAG NAIL/WASHER

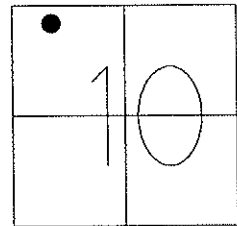
ON SURFACE - ~~BELOW~~ ON _____

~~LEFT~~ - Q PAV'T - RIGHT 0.5'

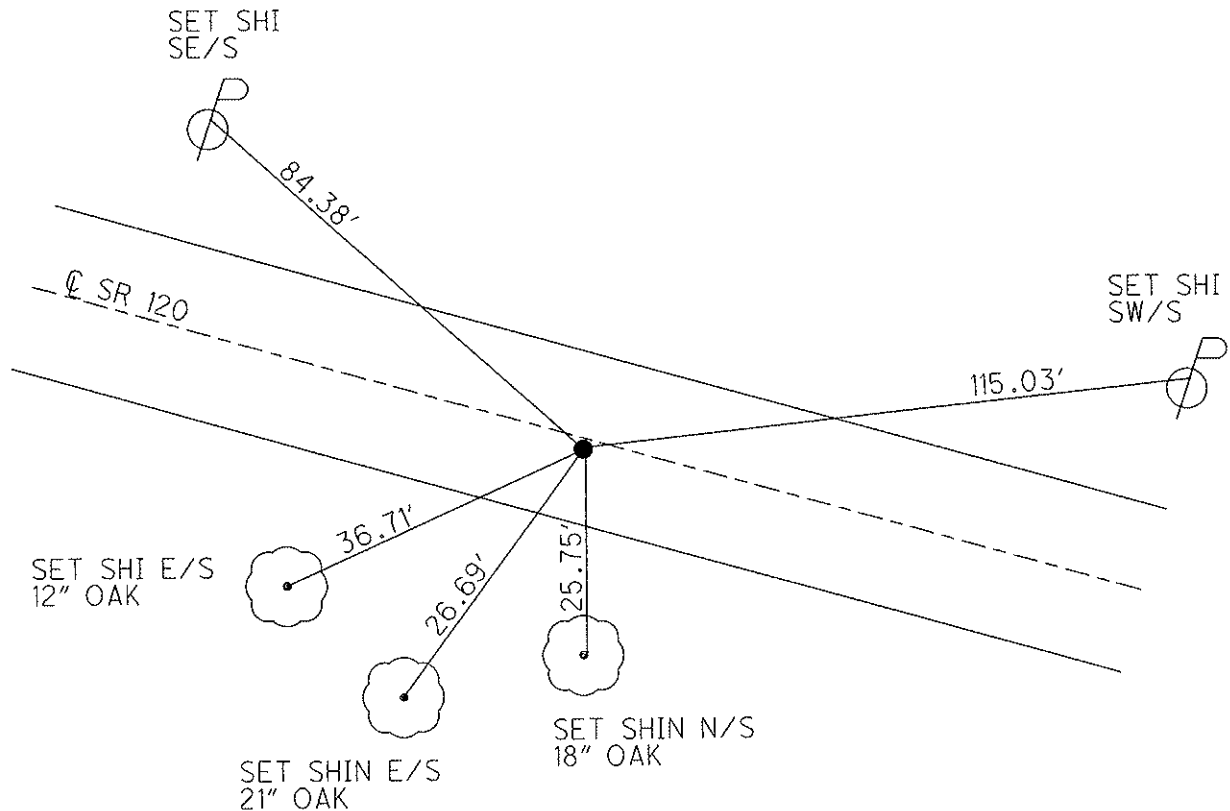
9.5' TO RT EDGE PAVEMENT

S.L.M. 25+00

Grid: Northing: _____ Easting: _____



REFERENCE TO 1926 PLAN:
RE-ESTABLISHED POINT 12/22/03



O.D.O.T. DISTRICT 2 SURVEY OFFICE

PERSONNEL

REFERENCE NO. 1-A

SHEET 2 OF

NOTES 1. Stone

H.C. D. Curtis

R.C. J. Householder

DATE 12 June 90

WEATHER Fair

TEMP. 68°

ROUTE SR#120

COUNTY Fulton

TOWNSHIP Clatsopfield

SECTION 10

T R

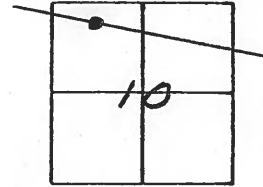
TYPE MONUMENT PK Nail

ON SURFACE - BELOW Surface

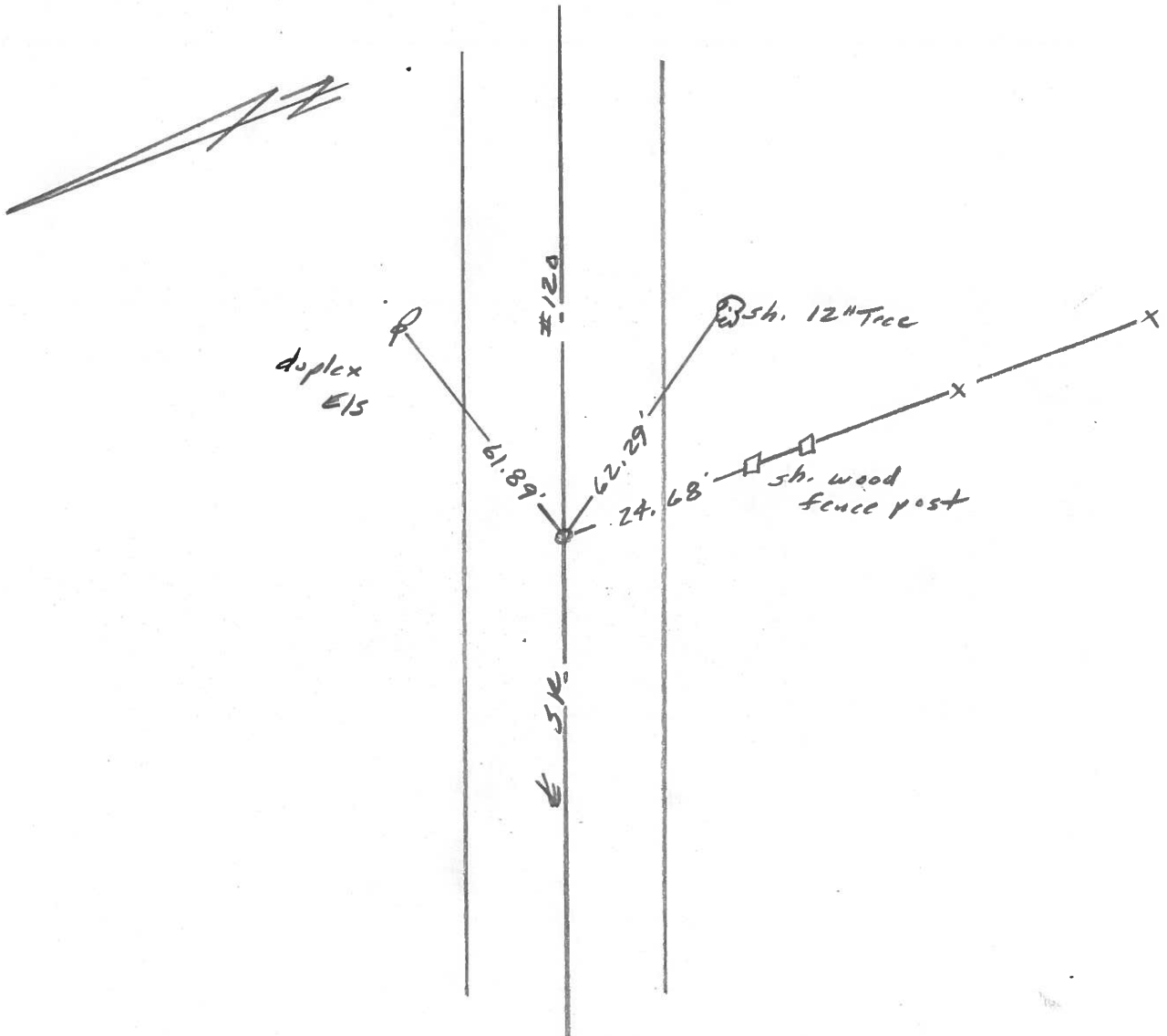
LEFT - ☉ PAV'T. - RIGHT

 TO EDGE PAVEMENT

S.L.M. 21+94



Set PK Nail 8-8-90 IRS



County Fulton S.R. 120

Township Chesterfield

Section 10

T N, R E

Personnel I. Stone

P. Neuser

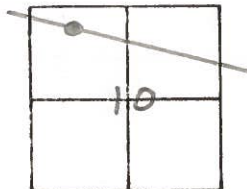
R. Michalak

D. Curtis

Date 29 Aug. 83

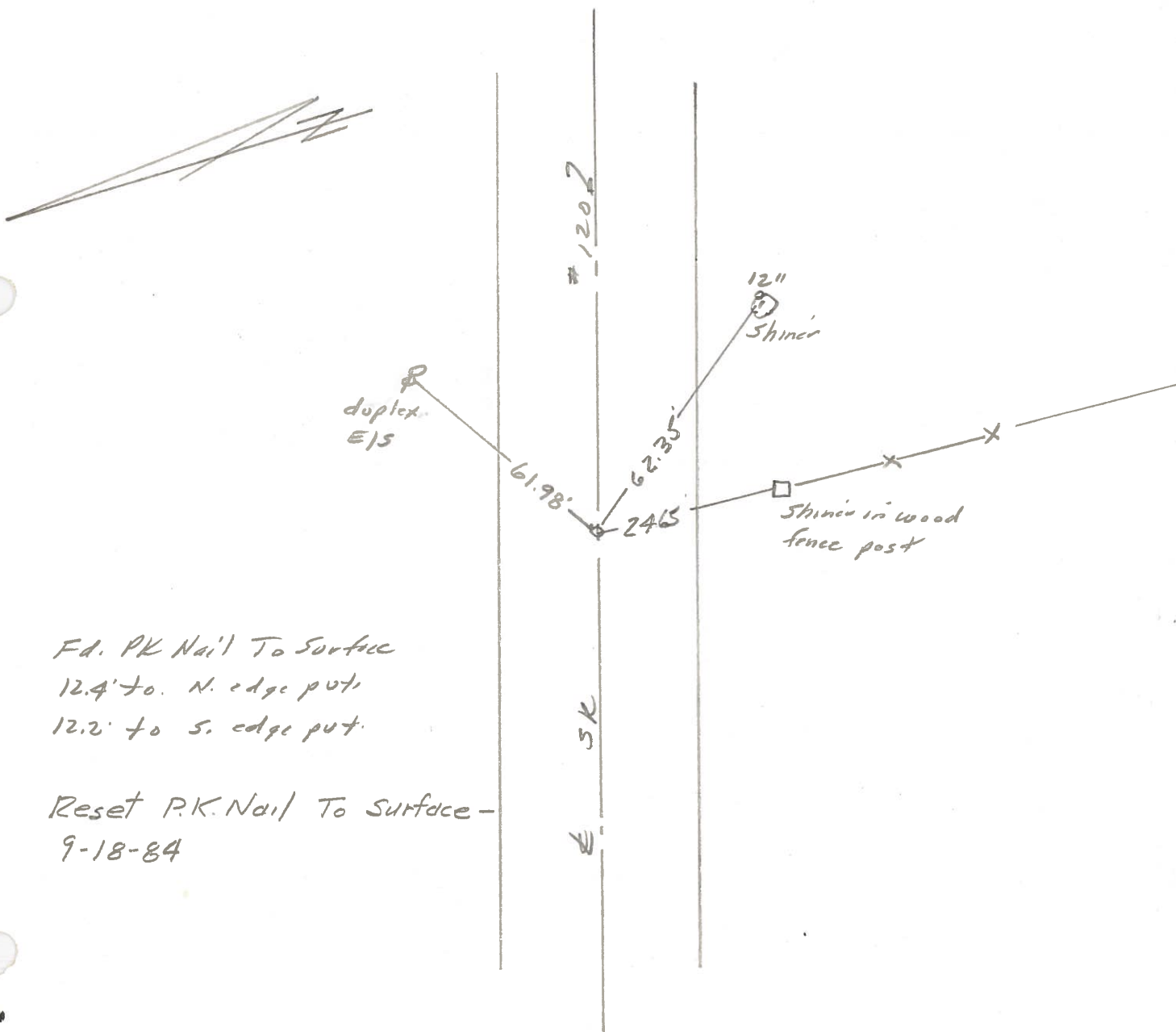
Weather Warm

Temp. 83°



SLM STA. 21+95

Ref No. 1A



Fd. PK Nail To Surface
 12.4' to N. edge put
 12.2' to S. edge put.

Reset P.K. Nail To Surface -
 9-18-84