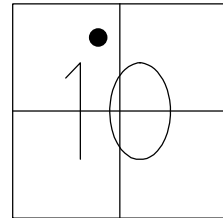


O.D.O.T. DISTRICT 2 SURVEY OFFICE (USE ONLY)

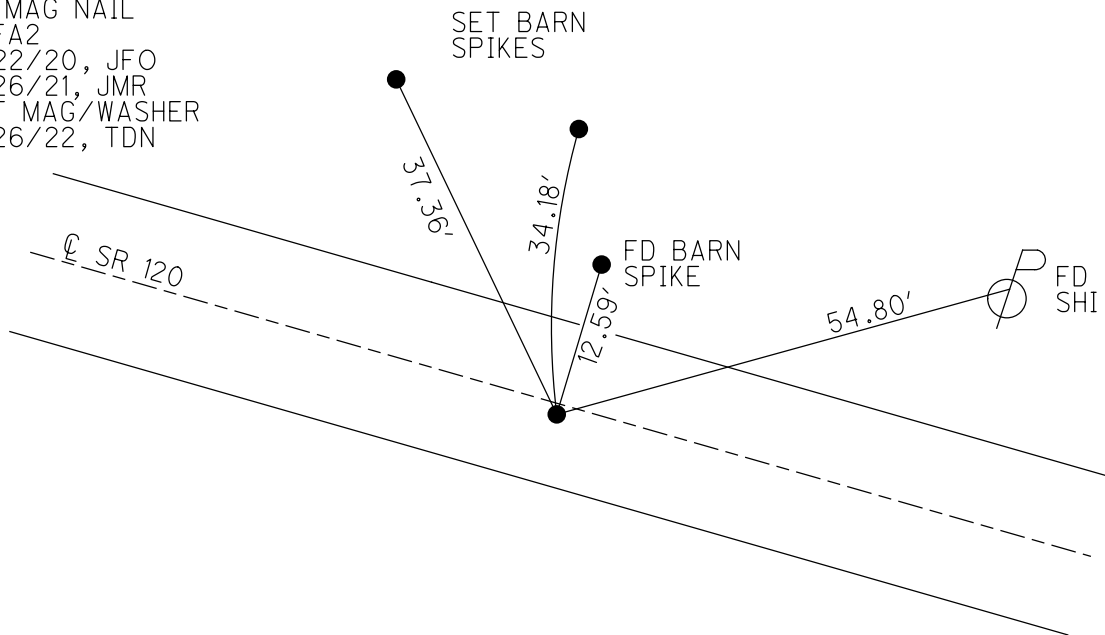
PERSONNEL _____ REFERENCE NO. 2 A SHEET 5 OF 50
 NOTES NIESE DATE 2/26/21 ROUTE SR 120
 H.C. O'DONNELL WEATHER FAIR COUNTY FULTON
 R.C. PARADYSZ TEMP. 30° TOWNSHIP CHESTERFIELD
AUBLE SECTION 10
 DWG BY RHOADES PID 99582 T 9 N R 2 E

TYPE MONUMENT MAG NAIL
 ON SURFACE - ~~BELOW~~ ON
 OFFSET \varnothing PAVEMENT ON LT : RT
10' TO LT EDGE PAVEMENT
 STATION: 44+00



HORZ. DATUM: NAD83 2011 GEOID: NAVD88 2012A
 GRID: NORTHING: 748088.784 EASTING: 1515139.676

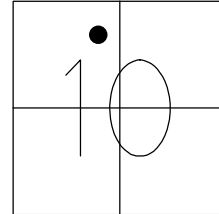
RECORD:
 1926 PLAN
 SET MAG/WASHER
 12/22/03, DCH
 SET MAG/WASHER
 5/23/11, RJL
 FD MAG/WASHER
 REFA2
 5/12/17
 4/26/19, JLL
 FD MAG NAIL
 REFA2
 9/22/20, JFO
 2/26/21, JMR
 SET MAG/WASHER
 7/26/22, TDN



O.D.O.T. DISTRICT 2 SURVEY OFFICE (USE ONLY)

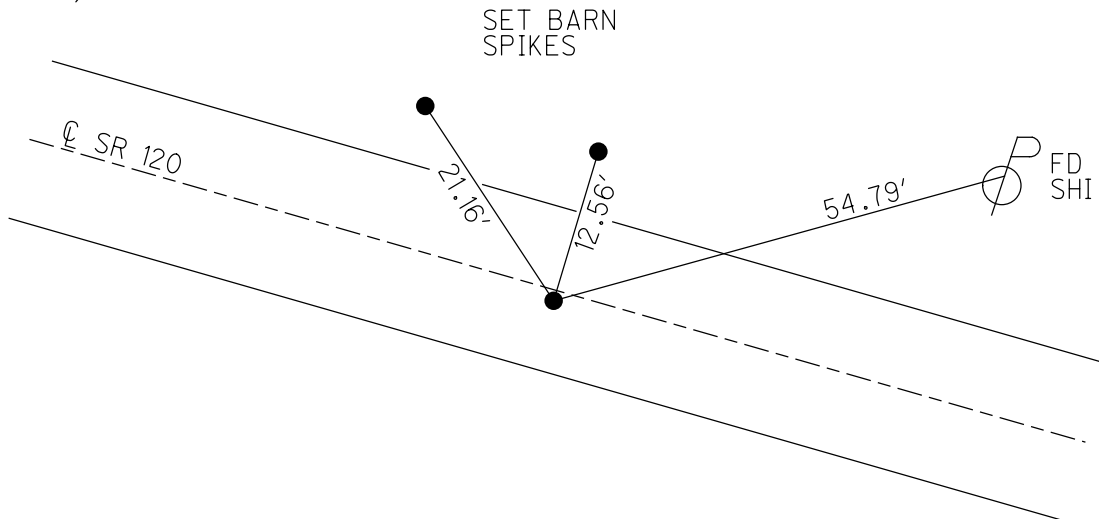
PERSONNEL _____ REFERENCE NO. 2 A SHEET 5 OF 47
 NOTES NIESE DATE 2/26/21 ROUTE SR 120
 H.C. RHOADES WEATHER FAIR COUNTY FULTON
 R.C. _____ TEMP. 30° TOWNSHIP CHESTERFIELD
 DWG BY NIESE PID PAVETRAIN SECTION 10
 T 9 N R 2 E

TYPE MONUMENT MAG NAIL
 ON SURFACE - ~~BELOW~~ ON
 OFFSET ☐ PAVEMENT ON LT : RT
10' TO LT EDGE PAVEMENT
 STATION: 44+00



HORZ. DATUM: NAD83 2011 GEOID: NAVD88 2012A
 GRID: NORTHING: 748088.772 EASTING: 1515139.673

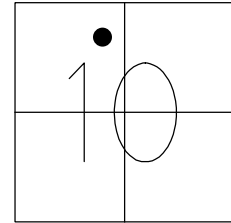
RECORD:
 1926 PLAN
 SET MAG/WASHER
 12/22/03, DCH
 SET MAG/WASHER
 5/23/11, RJL
 FD MAG/WASHER
 REFA2
 5/12/17, JLL
 FD MAG NAIL
 REFA2
 9/22/20, JFO
 2/26/21, JMR



O.D.O.T. DISTRICT 2 SURVEY OFFICE (USE ONLY)

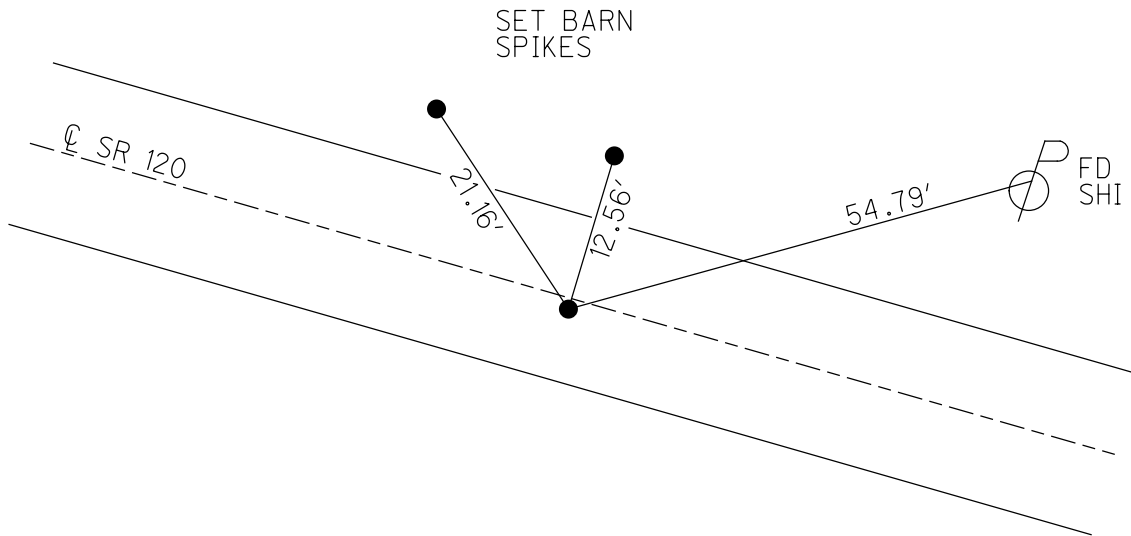
PERSONNEL _____ REFERENCE NO. 2 A SHEET 5 OF 47
 NOTES RHOADES DATE 9/22/20 ROUTE SR 120
 H.C. O'DONNELL WEATHER SUNNY COUNTY FULTON
 R.C. AUBLE TEMP. 51° TOWNSHIP CHESTERFIELD
 DWG BY RHOADES PID PAVETRAIN SECTION 10
 T 9 N R 2 E

TYPE MONUMENT MAG NAIL
 ON SURFACE - ~~BELOW~~ ON
 OFFSET \odot PAVEMENT ON LT : RT
10' TO LT EDGE PAVEMENT
 STATION: 44+00



HORZ. DATUM: NAD83 2011 GEOID: NAVD88 2012A
 GRID: NORTHING: 748088.772 EASTING: 1515139.673

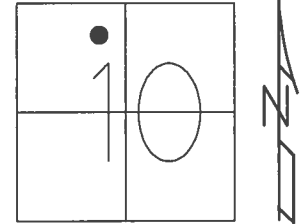
RECORD:
 1926 PLAN
 SET MAG/WASHER
 12/22/03, DCH
 SET MAG/WASHER
 5/23/11, RJL
 FD MAG/WASHER
 REFA2
 5/12/17, JLL
 FD MAG NAIL
 REFA2
 9/22/20, JFO



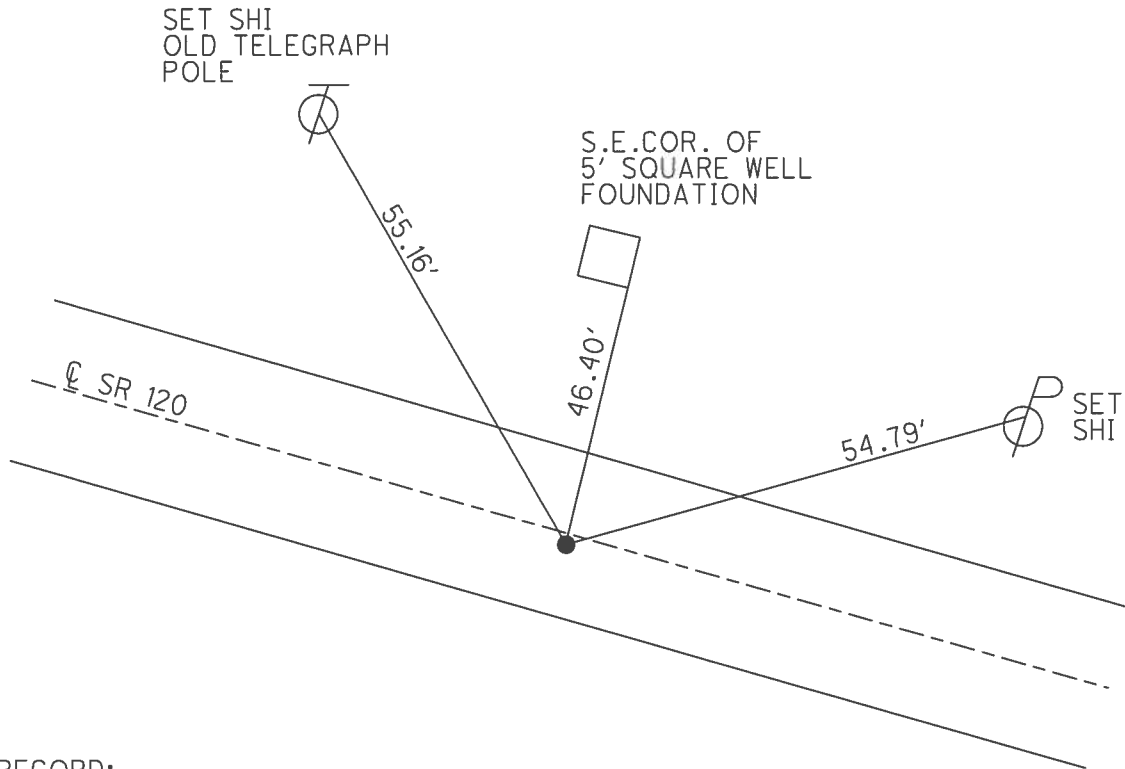
O.D.O.T. DISTRICT 2 SURVEY OFFICE (USE ONLY)

PERSONNEL _____ REFERENCE NO. 2 A SHEET 5 OF 45
 NOTES FINGER DATE 5/23/11 ROUTE SR 120
 H.C. LUMBREZER WEATHER CLOUDY COUNTY FULTON
 R.C. MOSER TEMP. 70° TOWNSHIP CHESTERFIELD
 _____ SECTION 11
 _____ T 9 N R 2 E

TYPE MONUMENT MAG/WASHER
 ON SURFACE - ~~BELOW~~ ON
 LEFT - ☉ PAV'T - RIGHT ON
10 TO LT EDGE PAVEMENT
 S.L.M. 44+00



GRID: NORTHING: 748088.784 EASTING: 1515139.676



RECORD:
 1926 PLAN
 SET MAG/WASHER
 12/22/03, DCH
 SET MAG/WASHER
 5/23/11, RJL
 FD MAG/WASHER
 REFA2
 5/12/17, JLL

O.D.O.T. DISTRICT 2 SURVEY OFFICE

PERSONNEL _____

REFERENCE NO. 2 A

SHEET 5 OF 45

NOTES FINGER

DATE 5/23/11

ROUTE SR 120

H.C. LUMBREZER

WEATHER CLOUDY

COUNTY FULTON

R.C. MOSER

TEMP. 70°

TOWNSHIP CHESTERFIELD

SECTION 11

T 9 N R 2 E

TYPE MONUMENT SET MAG NAIL/WASHER

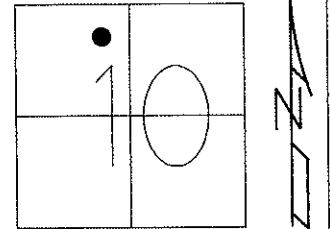
ON SURFACE - ~~BELOW~~ ON

LEFT - Q PAV'T - RIGHT ON

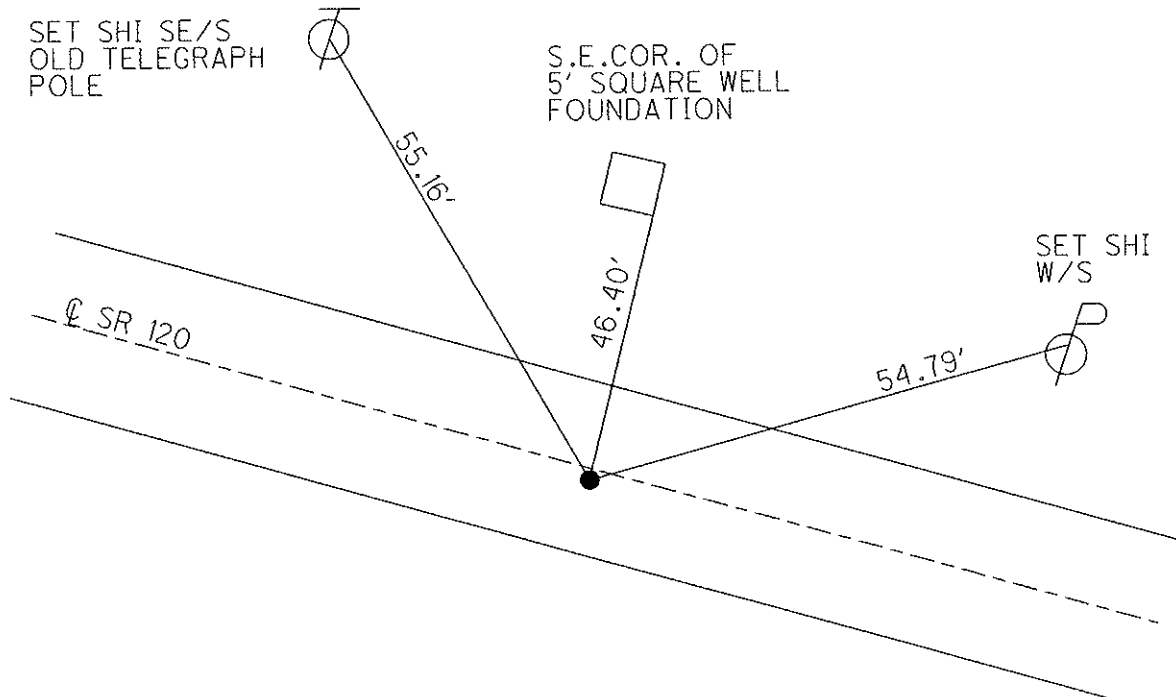
10 TO LT EDGE PAVEMENT

S.L.M. 44+00

Grid: Northing: _____ Easting: _____



REFERENCE TO 1926 PLAN:
RE-ESTABLISHED POINT 12/22/03



O.D.O.T. DISTRICT 2 SURVEY OFFICE

PERSONNEL

REFERENCE NO. 2-A

SHEET 4 OF 12

NOTES HOMAN

DATE 12-22-03

ROUTE SR 120

H.C. HOMAN

WEATHER CLOUDY

COUNTY FULTON

R.C. BALLMER

TEMP. 41°

TOWNSHIP CHESTERFIELD

SECTION 10

T 9 S R 2 E

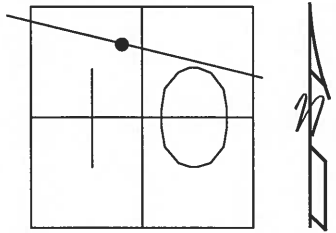
TYPE MONUMENT MAG NAIL & WASHER SET

ON SURFACE - ~~BELOW~~ ON

~~LEFT - Q PAVT - RIGHT~~ ON

10 TO LT EDGE PAVEMENT

S.L.M. 44+00



Reference to 1926 PLAN;
Re-Established Point 12-22-03

