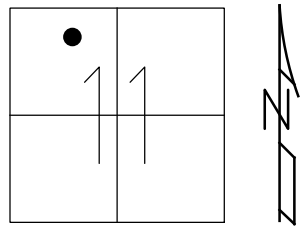


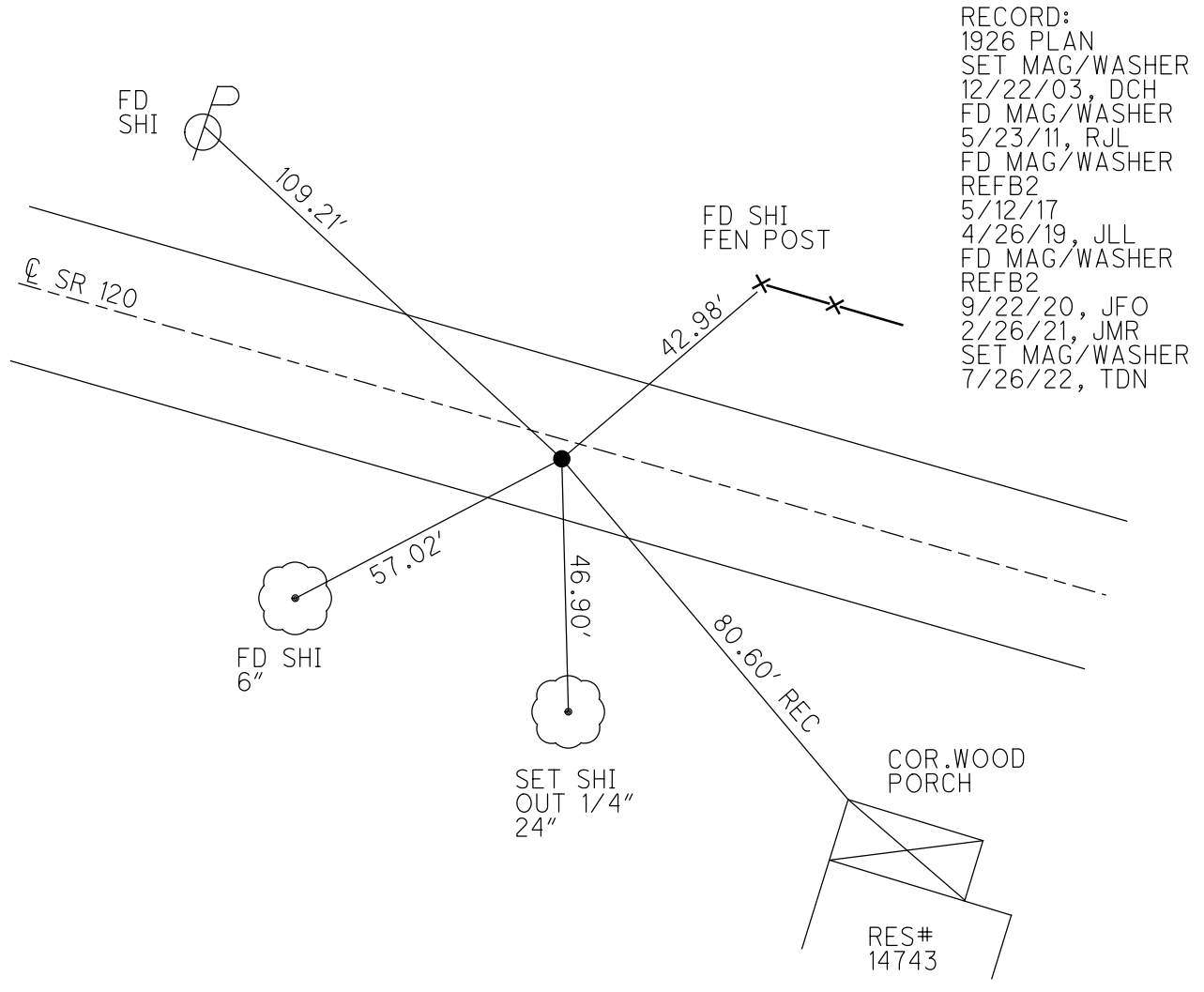
O.D.O.T. DISTRICT 2 SURVEY OFFICE (USE ONLY)

PERSONNEL _____ REFERENCE NO. 2 B SHEET 6 OF 50
 NOTES NIESE DATE 4/27/22 ROUTE SR 120
 H.C. O'DONNELL WEATHER BREEZY COUNTY FULTON
 R.C. PARADYSZ TEMP. 37° TOWNSHIP CHESTERFIELD
AUBLE SECTION 11
 DWG BY RHOADES PID 99582 T 9 N R 2 E

TYPE MONUMENT MAG/WASHER
 ON SURFACE - ~~BELOW~~ ON
 OFFSET \odot PAVEMENT 3' ~~LT~~ : RT
- TO - EDGE PAVEMENT
 STATION: 77+50



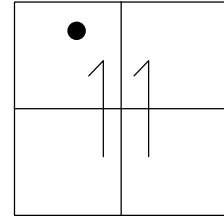
HORZ. DATUM: NAD83 2011 GEOID: NAVD88 2012A
 GRID: NORTHING: 747062.126 EASTING: 1518328.534



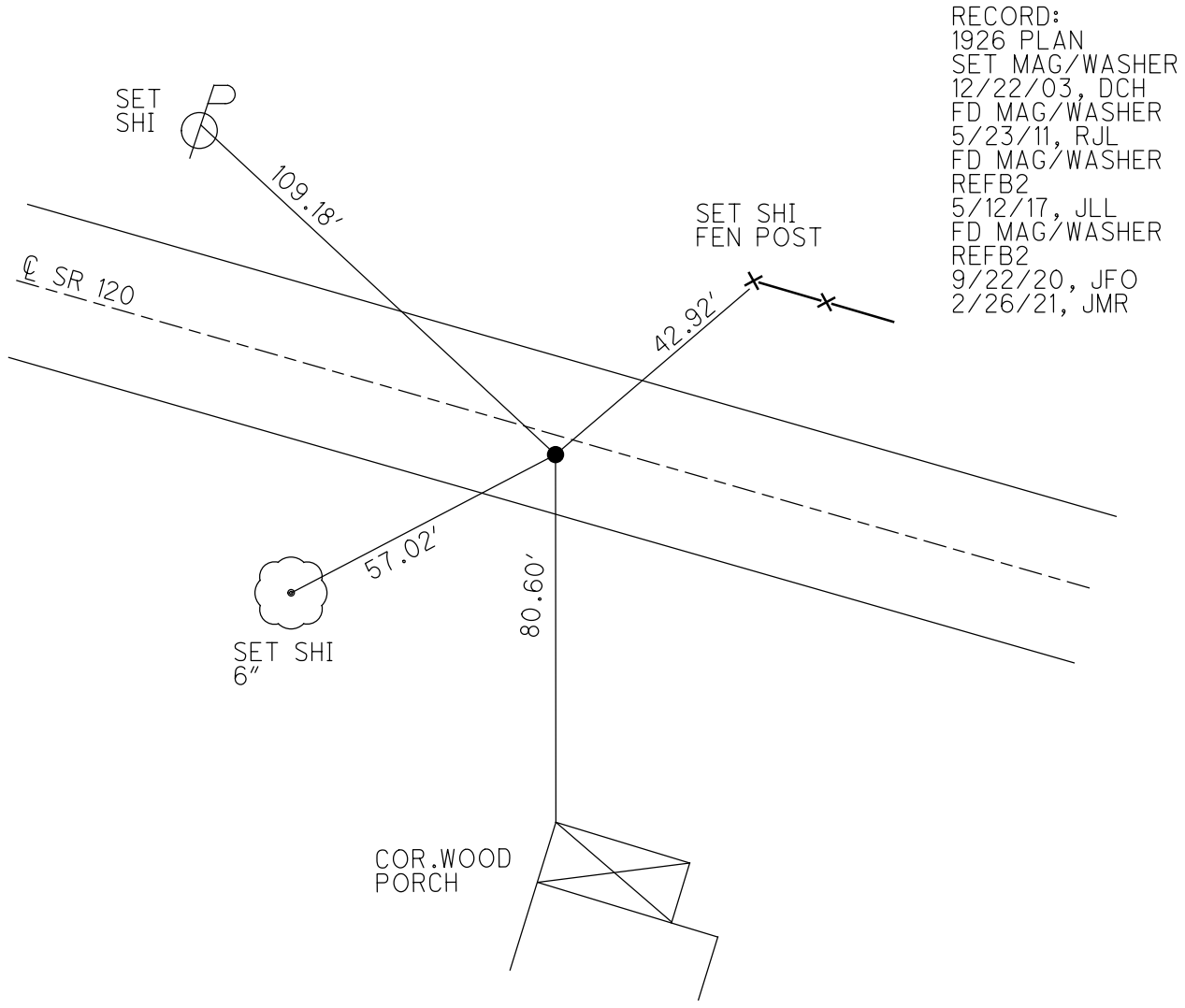
O.D.O.T. DISTRICT 2 SURVEY OFFICE (USE ONLY)

PERSONNEL _____ REFERENCE NO. 2 B SHEET 6 OF 47
 NOTES NIESE DATE 2/26/21 ROUTE SR 120
 H.C. RHOADES WEATHER FAIR COUNTY FULTON
 R.C. _____ TEMP. 30° TOWNSHIP CHESTERFIELD
 DWG BY NIESE PID PAVETRAIN SECTION 11
 T 9 N R 2 E

TYPE MONUMENT MAG/WASHER
 ON SURFACE - ~~BELOW~~ ON
 OFFSET Q PAVEMENT 3' LT : RT
- TO - EDGE PAVEMENT
 STATION: 77+50



HORZ. DATUM: NAD83 2011 GEOID: NAVD88 2012A
 GRID: NORTHING: 747062.118 EASTING: 1518328.527

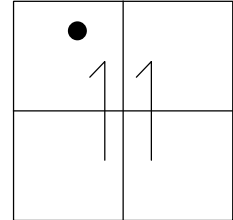


RECORD:
 1926 PLAN
 SET MAG/WASHER
 12/22/03, DCH
 FD MAG/WASHER
 5/23/11, RJL
 FD MAG/WASHER
 REFB2
 5/12/17, JLL
 FD MAG/WASHER
 REFB2
 9/22/20, JFO
 2/26/21, JMR

O.D.O.T. DISTRICT 2 SURVEY OFFICE (USE ONLY)

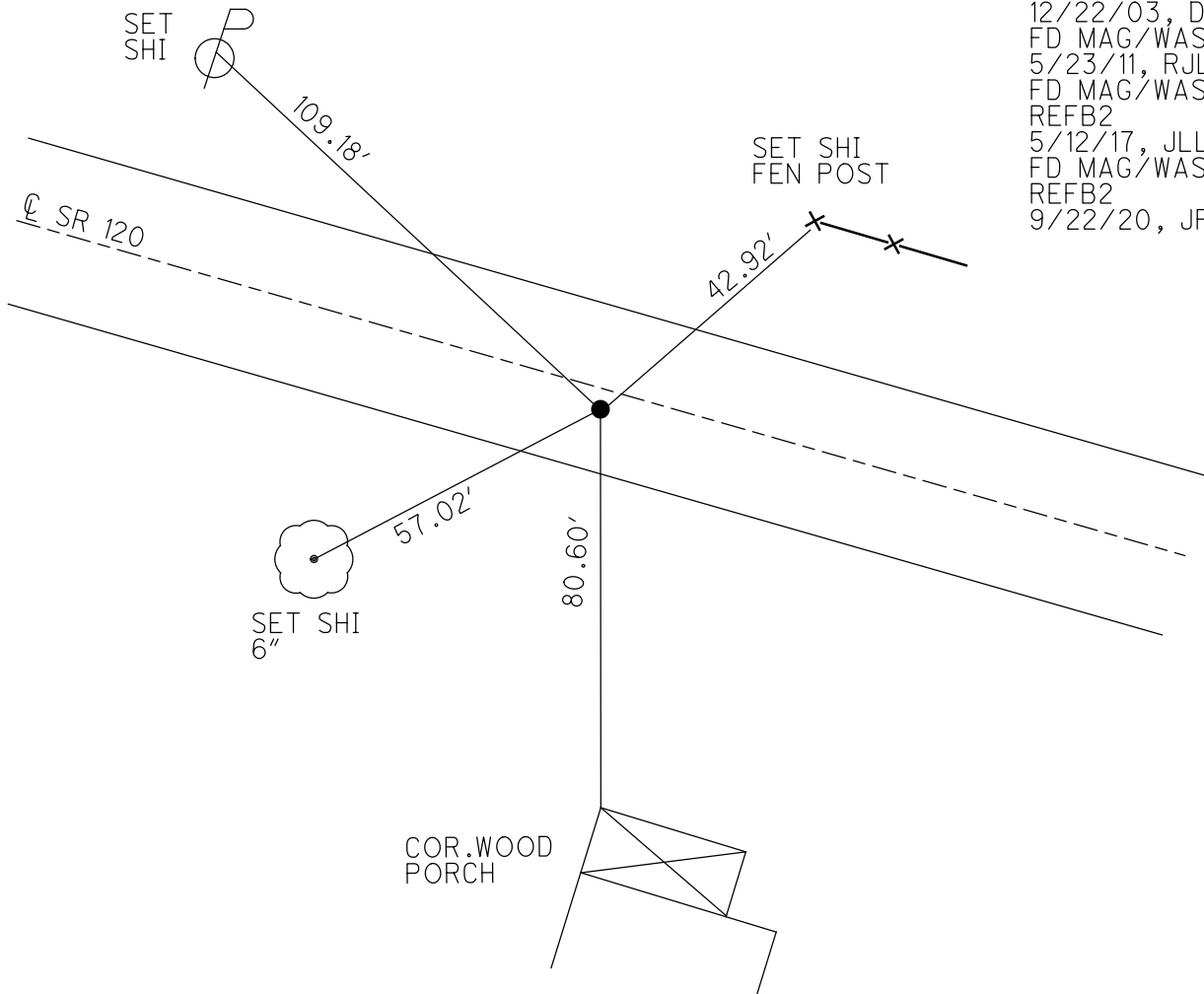
PERSONNEL _____ REFERENCE NO. 2 B SHEET 6 OF 47
 NOTES RHOADES DATE 9/22/20 ROUTE SR 120
 H.C. O'DONNELL WEATHER SUNNY COUNTY FULTON
 R.C. AUBLE TEMP. 54° TOWNSHIP CHESTERFIELD
 DWG BY RHOADES PID PAVETRAIN SECTION 11
 T 9 N R 2 E

TYPE MONUMENT MAG/WASHER
 ON SURFACE - ~~BELOW~~ ON
 OFFSET ☉ PAVEMENT 3' ~~ET~~ : RT
 - TO - EDGE PAVEMENT
 STATION: 77+50



HORZ. DATUM: NAD83 2011 GEOID: NAVD88 2012A
 GRID: NORTHING: 747062.118 EASTING: 1518328.527

RECORD:
 1926 PLAN
 SET MAG/WASHER
 12/22/03, DCH
 FD MAG/WASHER
 5/23/11, RJL
 FD MAG/WASHER
 REFB2
 5/12/17, JLL
 FD MAG/WASHER
 REFB2
 9/22/20, JFO

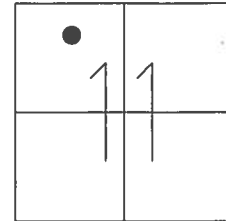


O.D.O.T. DISTRICT 2 SURVEY OFFICE (USE ONLY)

PERSONNEL _____ REFERENCE NO. 2 B SHEET 6 OF 45

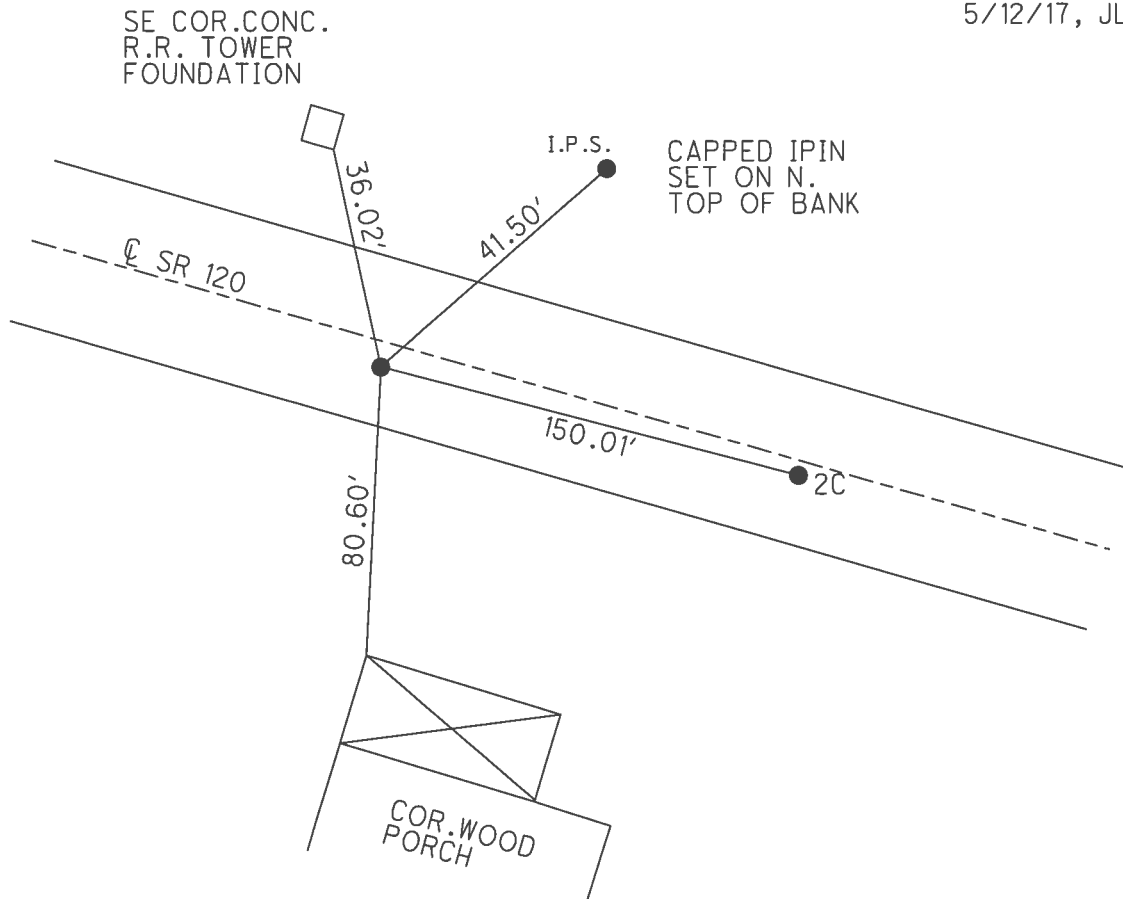
NOTES FINGER _____ DATE 5/23/11 ROUTE SR 120
 H.C. LUMBREZER WEATHER CLOUDY COUNTY FULTON
 R.C. MOSER TEMP. 70° TOWNSHIP CHESTERFIELD
 _____ SECTION 11
 _____ T 9 N R 2 E

TYPE MONUMENT MAG/WASHER
 ON SURFACE - ~~BELOW~~ ON _____
~~LEFT~~ - ☉ PAV'T - RIGHT 3'
 - TO - EDGE PAVEMENT
 S.L.M. 77+50



GRID: NORTHING: 747062.126 EASTING: 1518328.534

RECORD:
 1926 PLAN
 SET MAG/WASHER
 12/22/03, DCH
 FD MAG/WASHER
 5/23/11, RJL
 FD MAG/WASHER
 REFB2
 5/12/17, JLL



O.D.O.T. DISTRICT 2 SURVEY OFFICE

PERSONNEL _____

REFERENCE NO. 2 B

SHEET 6 OF 45

NOTES FINGER

DATE 5/23/11

ROUTE SR 120

H.C. LUMBREZER

WEATHER CLOUDY

COUNTY FULTON

R.C. MOSER

TEMP. 70°

TOWNSHIP CHESTERFIELD

SECTION 11

T 9 N R 2 E

TYPE MONUMENT MAG NAIL/WASHER

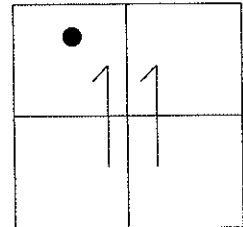
ON SURFACE - ~~BELOW~~ ON

~~LEFT~~ - Q PAV'T - RIGHT 3'

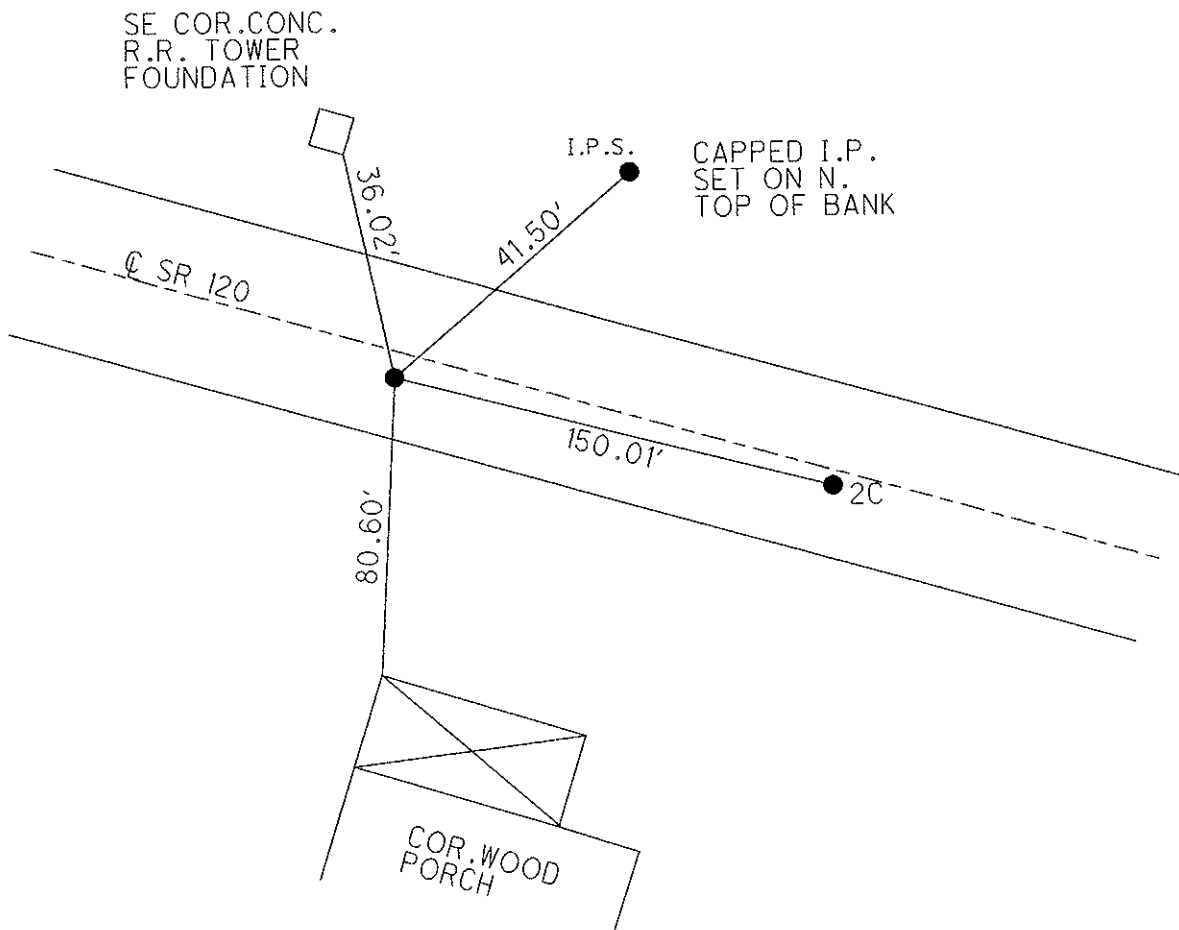
TO EDGE PAVEMENT

S.L.M. 77+50

Grid: Northing: _____ Easting: _____



REFERENCE TO 1926 PLAN:
RE-ESTABLISHED POINT 12/22/03



O.D.O.T. DISTRICT 2 SURVEY OFFICE

PERSONNEL

REFERENCE NO. 2-B,C SHEET 5 OF 12

NOTES HOMAN

DATE 12-22-03

ROUTE SR 120

H.C. HOMAN

WEATHER CLOUDY

COUNTY FULTON

R.C. BALLMER

TEMP. 41°

TOWNSHIP CHESTERFIELD

SECTION 11

T 9 S R 2 E

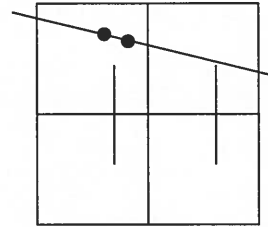
TYPE MONUMENT MAG NAIL & WASHER SET

ON SURFACE - ~~BELOW~~ ON

~~LEFT - Q PAVT - RIGHT~~ A=3' RT, B=1' RT

TO EDGE PAVEMENT

S.L.M. A= 77+50, B= 79+00



Reference to 1929 PLAN!
Re-established points 12-22-03

