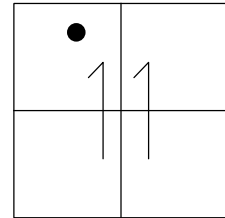


O.D.O.T. DISTRICT 2 SURVEY OFFICE (USE ONLY)

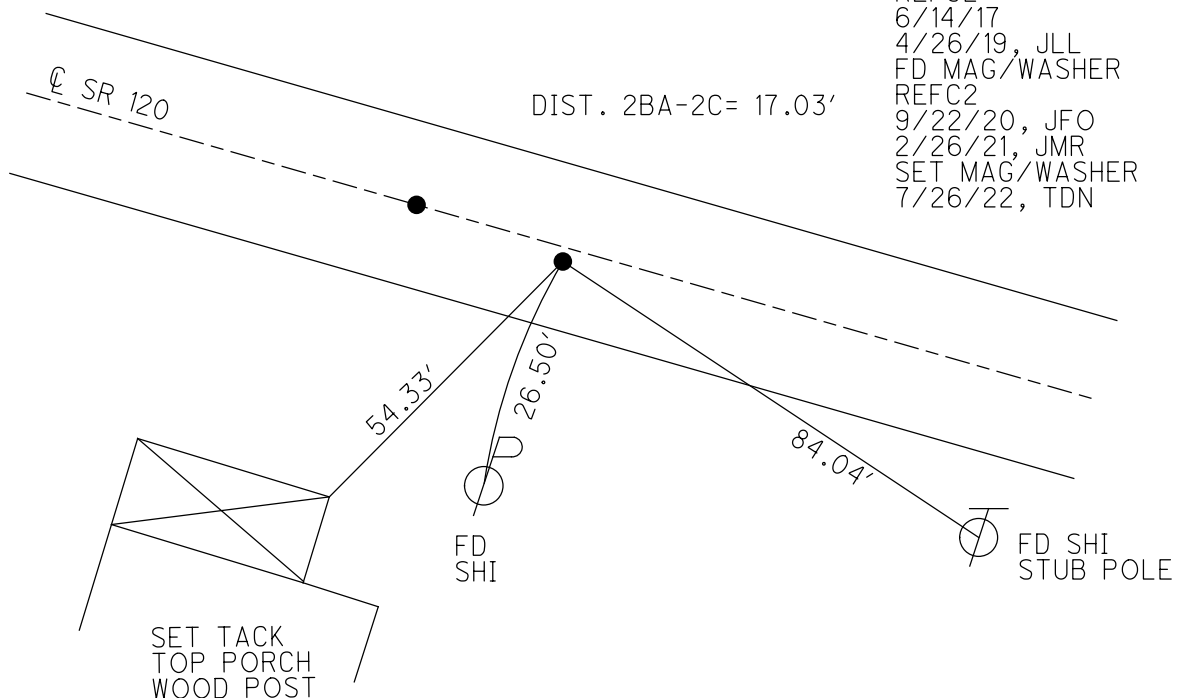
PERSONNEL \_\_\_\_\_ REFERENCE NO. 2 C SHEET 8 OF 50  
 NOTES NIESE DATE 4/27/22 ROUTE SR 120  
 H.C. O'DONNELL WEATHER BREEZY COUNTY FULTON  
 R.C. PARADYSZ TEMP. 37° TOWNSHIP CHESTERFIELD  
AUBLE SECTION 11  
 DWG BY NIESE PID 99582 T 9 N R 2 E

TYPE MONUMENT MAG/WASHER  
 ON SURFACE - ~~BELOW~~ ON  
 OFFSET ☉ PAVEMENT ON LT : RT  
- TO - EDGE PAVEMENT  
 STATION: 79+00

HORZ. DATUM: NAD83 2011 GEOID: NAVD88 2012A  
 GRID: NORTHING: 747022.844 EASTING: 1518473.323



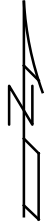
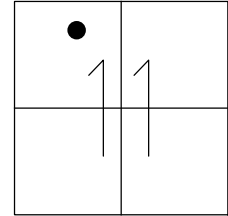
RECORD:  
 1926 PLAN  
 SET MAG/WASHER  
 12/22/03, DCH  
 FD MAG/WASHER  
 5/23/11, RJL  
 FD MAG/WASHER  
 REFC2  
 5/12/17, JLL  
 SET MAG/WASHER  
 REFC2  
 6/14/17  
 4/26/19, JLL  
 FD MAG/WASHER  
 REFC2  
 9/22/20, JFO  
 2/26/21, JMR  
 SET MAG/WASHER  
 7/26/22, TDN



O.D.O.T. DISTRICT 2 SURVEY OFFICE (USE ONLY)

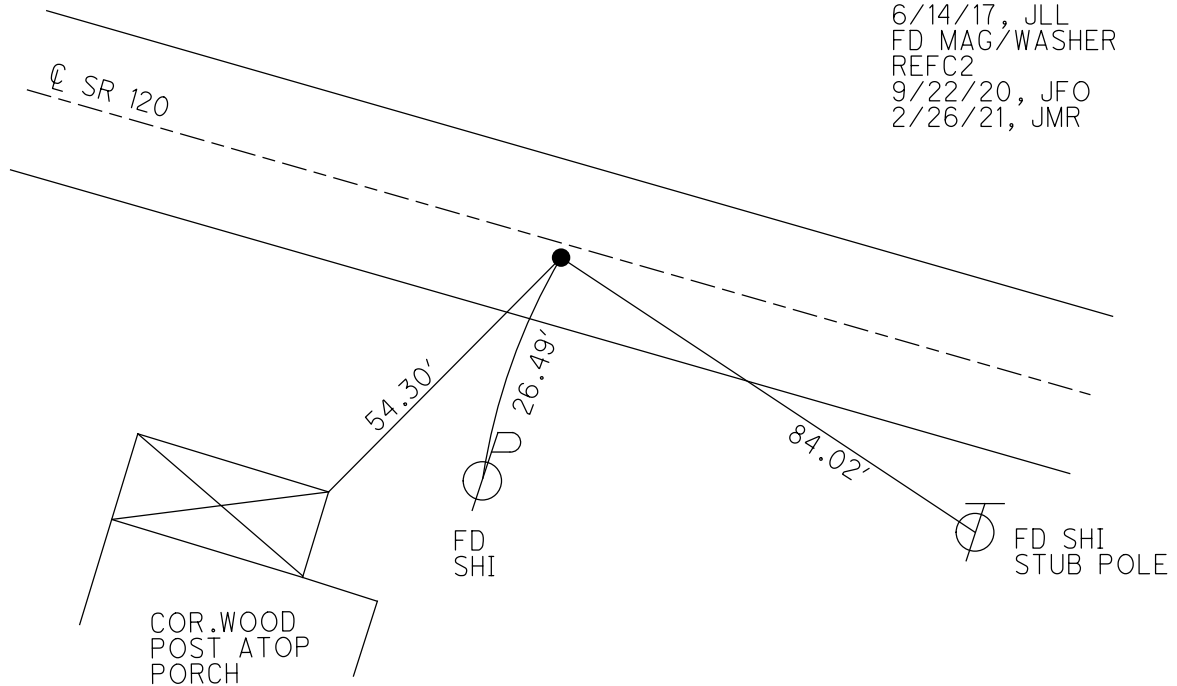
PERSONNEL \_\_\_\_\_ REFERENCE NO. 2 C SHEET 7 OF 47  
 NOTES NIESE \_\_\_\_\_ DATE 2/26/21 ROUTE SR 120  
 H.C. RHOADES \_\_\_\_\_ WEATHER FAIR COUNTY FULTON  
 R.C. \_\_\_\_\_ TEMP. 30° TOWNSHIP CHESTERFIELD  
 DWG BY NIESE PID PAVETRAIN SECTION 11  
 T 9 N R 2 E

TYPE MONUMENT MAG/WASHER  
 ON SURFACE - ~~BELOW~~ ON  
 OFFSET ☉ PAVEMENT ON \_\_\_\_\_ LT : RT  
 \_\_\_\_\_ TO \_\_\_\_\_ EDGE PAVEMENT  
 STATION: 79+00



HORZ. DATUM: NAD83 2011 GEOID: NAVD88 2012A  
 GRID: NORTHING: 747022.862 EASTING: 1518473.325

RECORD:  
 1926 PLAN  
 SET MAG/WASHER  
 12/22/03, DCH  
 FD MAG/WASHER  
 5/23/11, RJL  
 FD MAG/WASHER  
 REFC2  
 5/12/17, JLL  
 SET MAG/WASHER  
 REFC2  
 6/14/17, JLL  
 FD MAG/WASHER  
 REFC2  
 9/22/20, JFO  
 2/26/21, JMR



O.D.O.T. DISTRICT 2 SURVEY OFFICE (USE ONLY)

PERSONNEL \_\_\_\_\_ REFERENCE NO. 2 C SHEET 7 OF 47

NOTES RHOADES DATE 9/22/20 ROUTE SR 120

H.C. O'DONNELL WEATHER SUNNY COUNTY FULTON

R.C. AUBLE TEMP. 54° TOWNSHIP CHESTERFIELD

DWG BY RHOADES PID PAVETRAIN

SECTION 11

T 9 N R 2 E

TYPE MONUMENT MAG/WASHER

ON SURFACE - ~~BELOW~~ ON

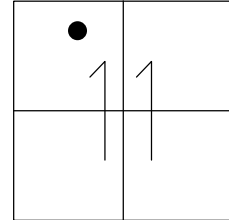
OFFSET ☉ PAVEMENT ON LT : RT

- TO - EDGE PAVEMENT

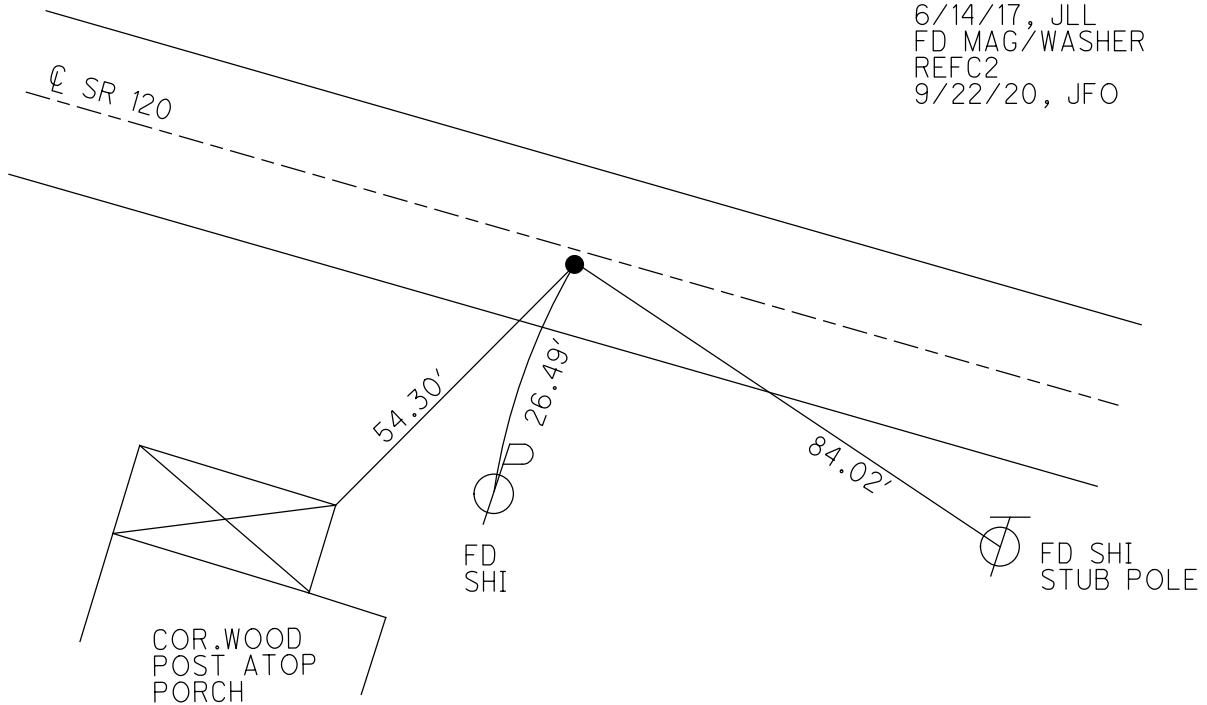
STATION: 79+00

HORZ. DATUM: NAD83 2011 GEOID: NAVD88 2012A

GRID: NORTHING: 747022.862 EASTING: 1518473.325



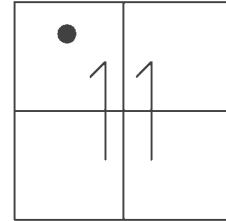
RECORD:  
 1926 PLAN  
 SET MAG/WASHER  
 12/22/03, DCH  
 FD MAG/WASHER  
 5/23/11, RJL  
 FD MAG/WASHER  
 REFC2  
 5/12/17, JLL  
 SET MAG/WASHER  
 REFC2  
 6/14/17, JLL  
 FD MAG/WASHER  
 REFC2  
 9/22/20, JFO



O.D.O.T. DISTRICT 2 SURVEY OFFICE (USE ONLY)

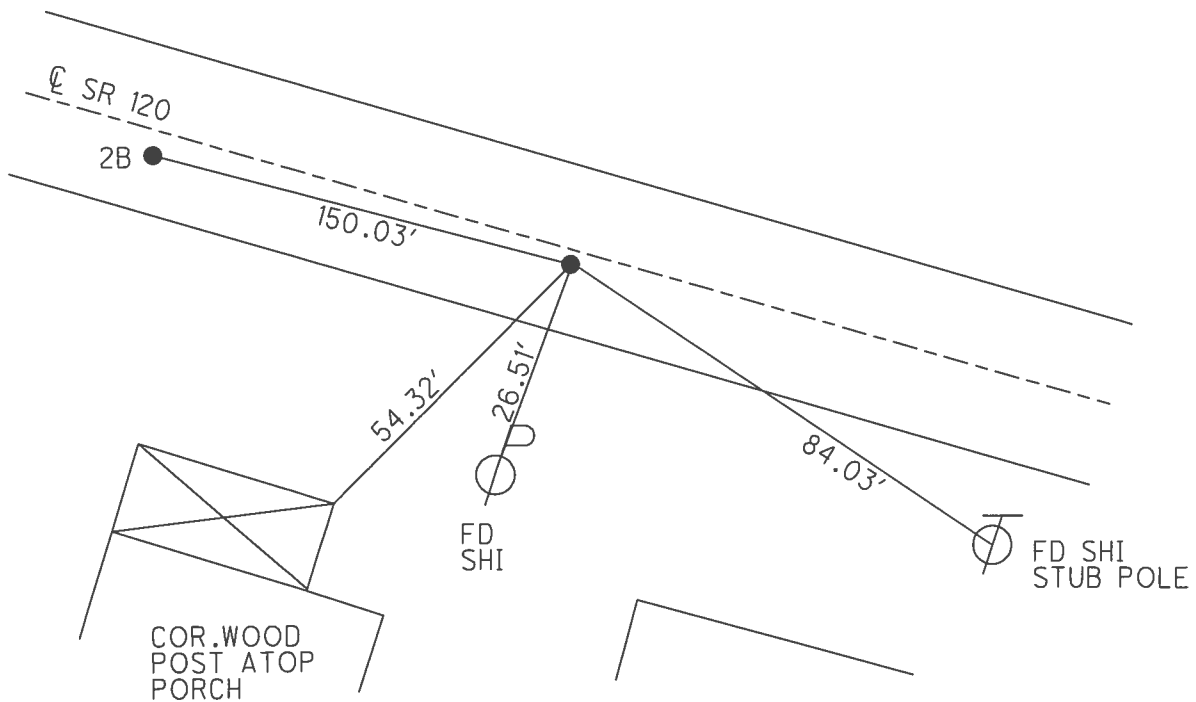
PERSONNEL \_\_\_\_\_ REFERENCE NO. 2 C SHEET 7 OF 45  
 NOTES FINGER DATE 5/23/11 ROUTE SR 120  
 H.C. LUMBREZER WEATHER CLOUDY COUNTY FULTON  
 R.C. MOSER TEMP. 70° TOWNSHIP CHESTERFIELD  
 \_\_\_\_\_ SECTION 11  
 \_\_\_\_\_ T 9 N R 2 E

TYPE MONUMENT MAG/WASHER  
 ON SURFACE - ~~BELOW~~ ON \_\_\_\_\_  
~~LEFT~~ - ☉ PAV'T - RIGHT 1'  
 - TO - EDGE PAVEMENT  
 S.L.M. 79+00



GRID: NORTHING: 747022.034 EASTING: 1518473.069

RECORD:  
 1926 PLAN  
 SET MAG/WASHER  
 12/22/03, DCH  
 FD MAG/WASHER  
 5/23/11, RJL  
 FD MAG/WASHER  
 REFC2  
 5/12/17, JLL  
 SET MAG/WASHER  
 REFC2  
 6/14/17, JLL



O.D.O.T. DISTRICT 2 SURVEY OFFICE

PERSONNEL \_\_\_\_\_

REFERENCE NO. 2 C

SHEET 7 OF 45

NOTES FINGER

DATE 5/23/11

ROUTE SR 120

H.C. LUMBREZER

WEATHER CLOUDY

COUNTY FULTON

R.C. MOSER

TEMP. 70°

TOWNSHIP CHESTERFIELD

SECTION 11

T 9 N R 2 E

TYPE MONUMENT MAG NAIL/WASHER

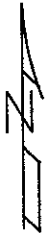
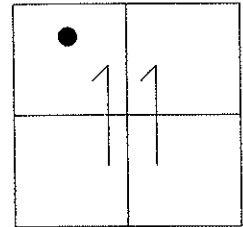
ON SURFACE - ~~BELOW~~ ON \_\_\_\_\_

~~LEFT~~ - Q PAV'T - RIGHT 1'

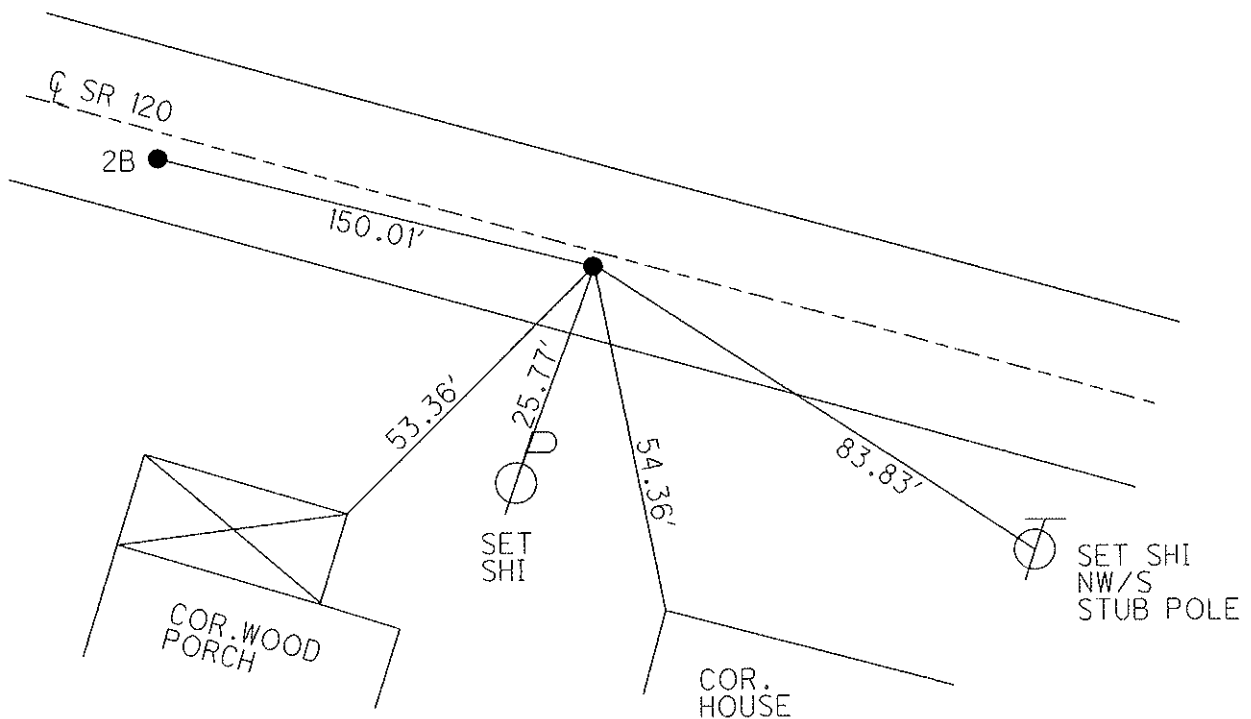
\_\_\_\_\_ TO \_\_\_\_\_ EDGE PAVEMENT

S.L.M. 79+00

Grid: Northing: \_\_\_\_\_ Easting: \_\_\_\_\_



REFERENCE TO 1926 PLAN:  
RE-ESTABLISHED POINT 12/22/03



O.D.O.T. DISTRICT 2 SURVEY OFFICE

PERSONNEL

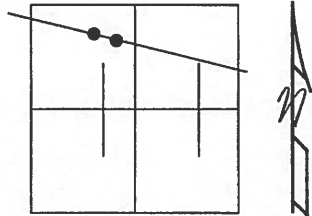
REFERENCE NO. 2-B,C SHEET 5 OF 12

NOTES HOMAN  
 H.C. HOMAN  
 R.C. BALLMER

DATE 12-22-03  
 WEATHER CLOUDY  
 TEMP. 41°

ROUTE SR 120  
 COUNTY FULTON  
 TOWNSHIP CHESTERFIELD  
 SECTION 11  
 T 9 S R 2 E

TYPE MONUMENT MAG NAIL & WASHER SET  
 ON SURFACE - ~~BELOW~~ ON  
~~LEFT - C PAV'T - RIGHT~~ A=3' RT, B=1' RT  
TO EDGE PAVEMENT  
 S.L.M. A= 77+50, B= 79+00



Reference to 1926 plan!  
 Re-established points 12-22-03

