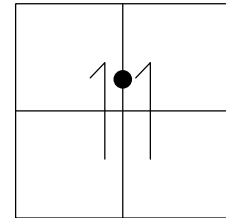


O.D.O.T. DISTRICT 2 SURVEY OFFICE (USE ONLY)

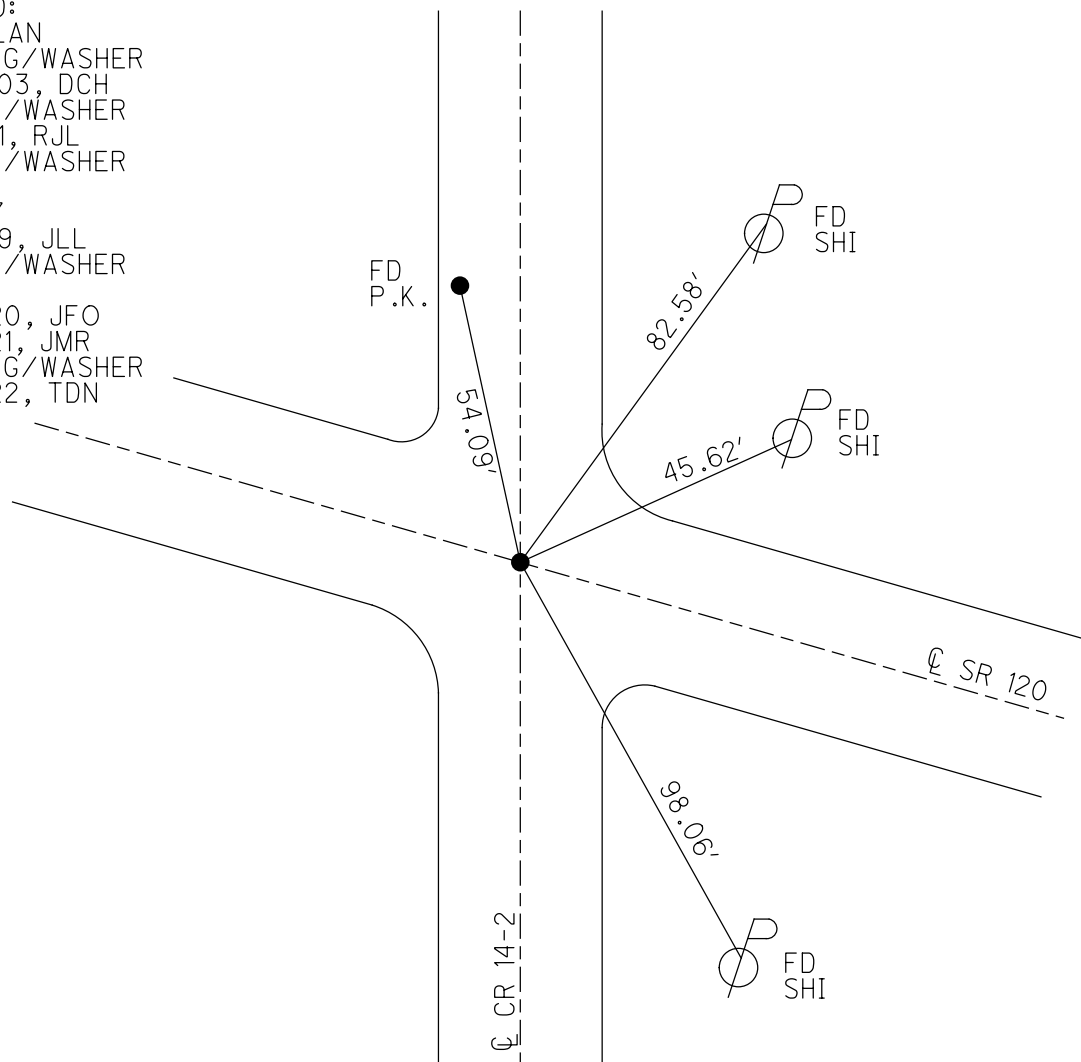
PERSONNEL \_\_\_\_\_ REFERENCE NO. 3 SHEET 9 OF 50  
 NOTES NIESE DATE 4/27/22 ROUTE SR 120  
 H.C. O'DONNELL WEATHER BREEZY COUNTY FULTON  
 R.C. PARADYSZ TEMP. 37° TOWNSHIP CHESTERFIELD  
AUBLE SECTION 11  
 DWG BY RHOADES PID 99582 T 9 N R 2 E

TYPE MONUMENT MAG/WASHER  
 ON SURFACE - ~~BELOW~~ ON  
 OFFSET 0.7' LT : ~~RT~~  
10.8' TO LT EDGE PAVEMENT  
 STATION: 91+00



HORZ. DATUM: NAD83 2011 GEOID: NAVD88 2012A  
 GRID: NORTHING: 746674.268 EASTING: 1519621.676

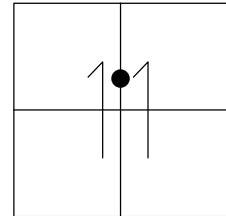
RECORD:  
 1926 PLAN  
 SET MAG/WASHER  
 12/22/03, DCH  
 FD MAG/WASHER  
 5/23/11, RJL  
 FD MAG/WASHER  
 REF3  
 5/12/17  
 4/26/19, JLL  
 FD MAG/WASHER  
 REF3  
 9/22/20, JFO  
 2/26/21, JMR  
 SET MAG/WASHER  
 7/26/22, TDN



O.D.O.T. DISTRICT 2 SURVEY OFFICE (USE ONLY)

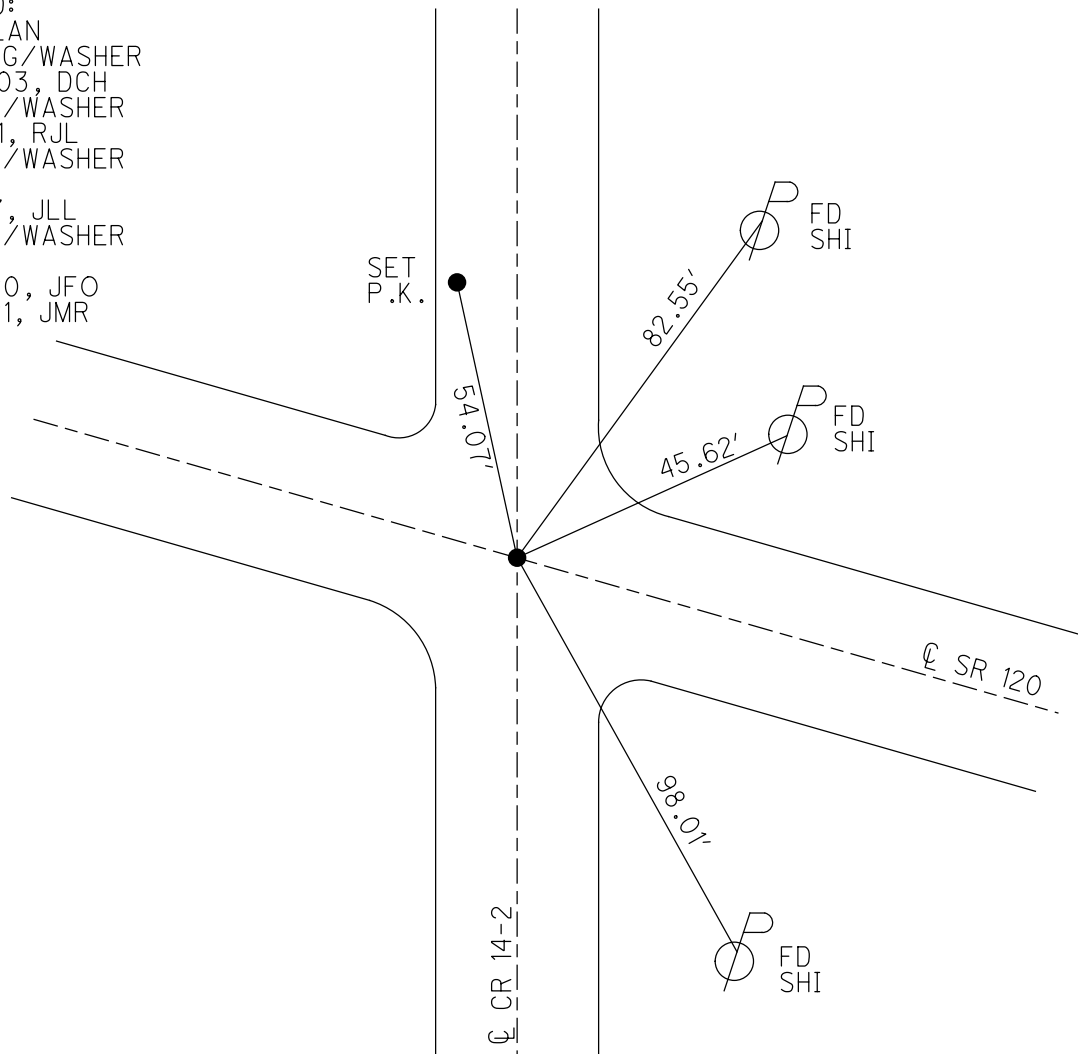
PERSONNEL \_\_\_\_\_ REFERENCE NO. 3 SHEET 8 OF 47  
 NOTES NIESE DATE 2/26/21 ROUTE SR 120  
 H.C. RHOADES WEATHER FAIR COUNTY FULTON  
 R.C. \_\_\_\_\_ TEMP. 30° TOWNSHIP CHESTERFIELD  
 DWG BY NIESE PID PAVETRAIN SECTION 11  
 T 9 N R 2 E

TYPE MONUMENT MAG/WASHER  
 ON SURFACE - ~~BELOW~~ ON  
 OFFSET  $\bar{C}$  PAVEMENT 0.7' LT : ~~RT~~  
10.8' TO LT EDGE PAVEMENT  
 STATION: 91+00



HORIZ. DATUM: NAD83 2011 GEOID: NAVD88 2012A  
 GRID: NORTHING: 746674.258 EASTING: 1519621.674

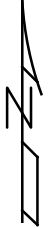
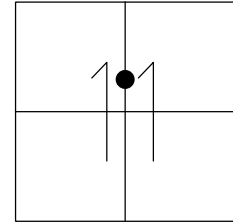
RECORD:  
 1926 PLAN  
 SET MAG/WASHER  
 12/22/03, DCH  
 FD MAG/WASHER  
 5/23/11, RJL  
 FD MAG/WASHER  
 REF3  
 5/12/17, JLL  
 FD MAG/WASHER  
 REF3  
 9/22/20, JFO  
 2/26/21, JMR



O.D.O.T. DISTRICT 2 SURVEY OFFICE (USE ONLY)

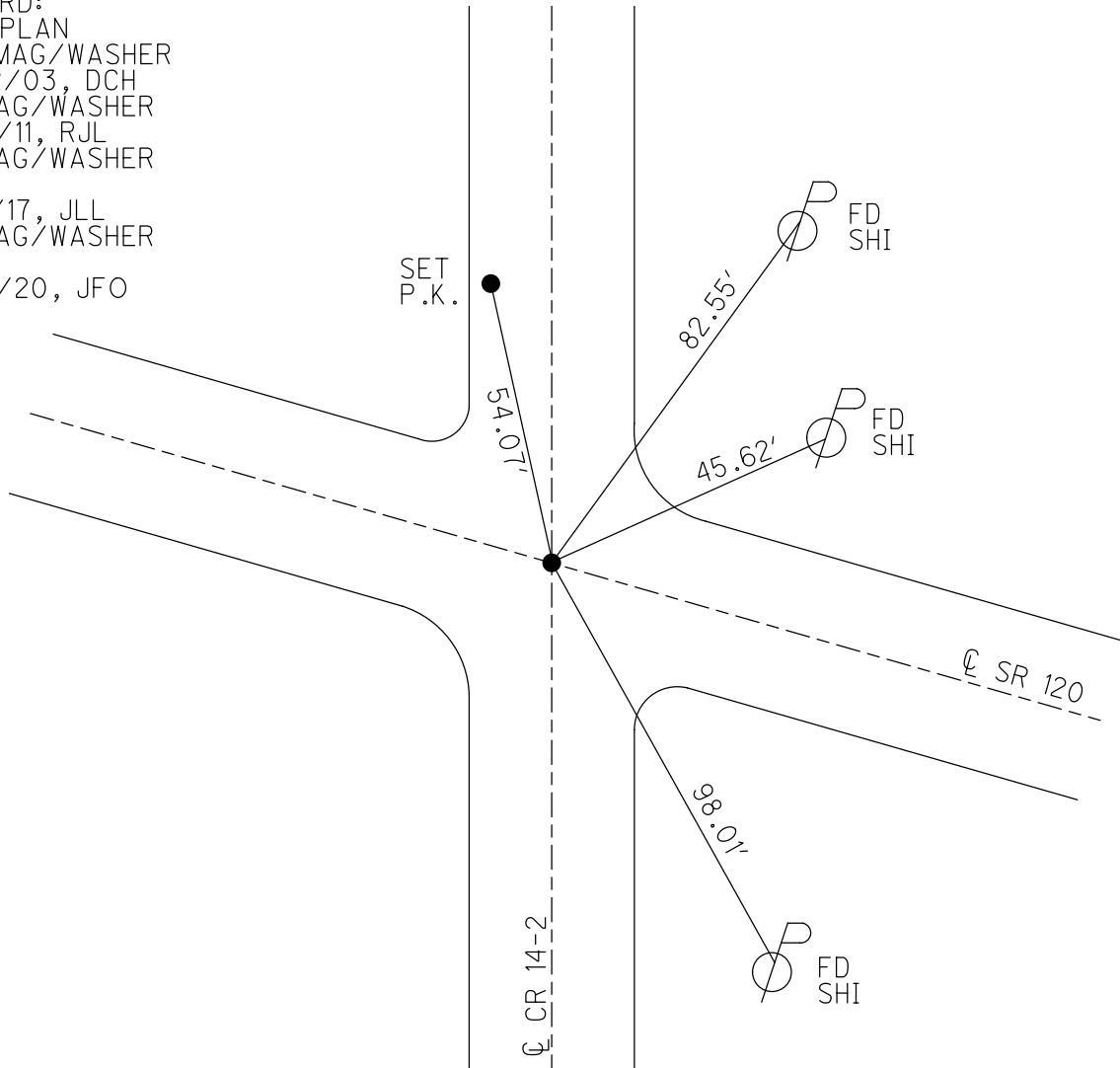
PERSONNEL \_\_\_\_\_ REFERENCE NO. 3 SHEET 8 OF 47  
 NOTES RHOADES DATE 9/22/20 ROUTE SR 120  
 H.C. O'DONNELL WEATHER SUNNY COUNTY FULTON  
 R.C. AUBLE TEMP. 54° TOWNSHIP CHESTERFIELD  
 DWG BY RHOADES PID PAVETRAIN SECTION 11  
 T 9 N R 2 E

TYPE MONUMENT MAG/WASHER  
 ON SURFACE - ~~BELOW~~ ON  
 OFFSET Q PAVEMENT 0.7' LT : RT  
10.8' TO LT EDGE PAVEMENT  
 STATION: 91+00



HORZ. DATUM: NAD83 2011 GEOID: NAVD88 2012A  
 GRID: NORTHING: 746674.258 EASTING: 1519621.674

RECORD:  
 1926 PLAN  
 SET MAG/WASHER  
 12/22/03, DCH  
 FD MAG/WASHER  
 5/23/11, RJL  
 FD MAG/WASHER  
 REF3  
 5/12/17, JLL  
 FD MAG/WASHER  
 REF3  
 9/22/20, JFO



O.D.O.T. DISTRICT 2 SURVEY OFFICE

PERSONNEL

REFERENCE NO. 3

SHEET 8 OF 45

NOTES FINGER

DATE 5/23/11

ROUTE SR 120

H.C. LUMBREZER

WEATHER CLOUDY

COUNTY FULTON

R.C. MOSER

TEMP. 70°

TOWNSHIP CHESTERFIELD

SECTION 11

T 9 N R 2 E

TYPE MONUMENT MAG NAIL/WASHER

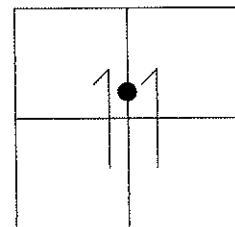
ON SURFACE - ~~BELOW~~ ON

LEFT - Q PAV'T - ~~RIGHT~~ 0.7'

10.8' TO LT. EDGE PAVEMENT

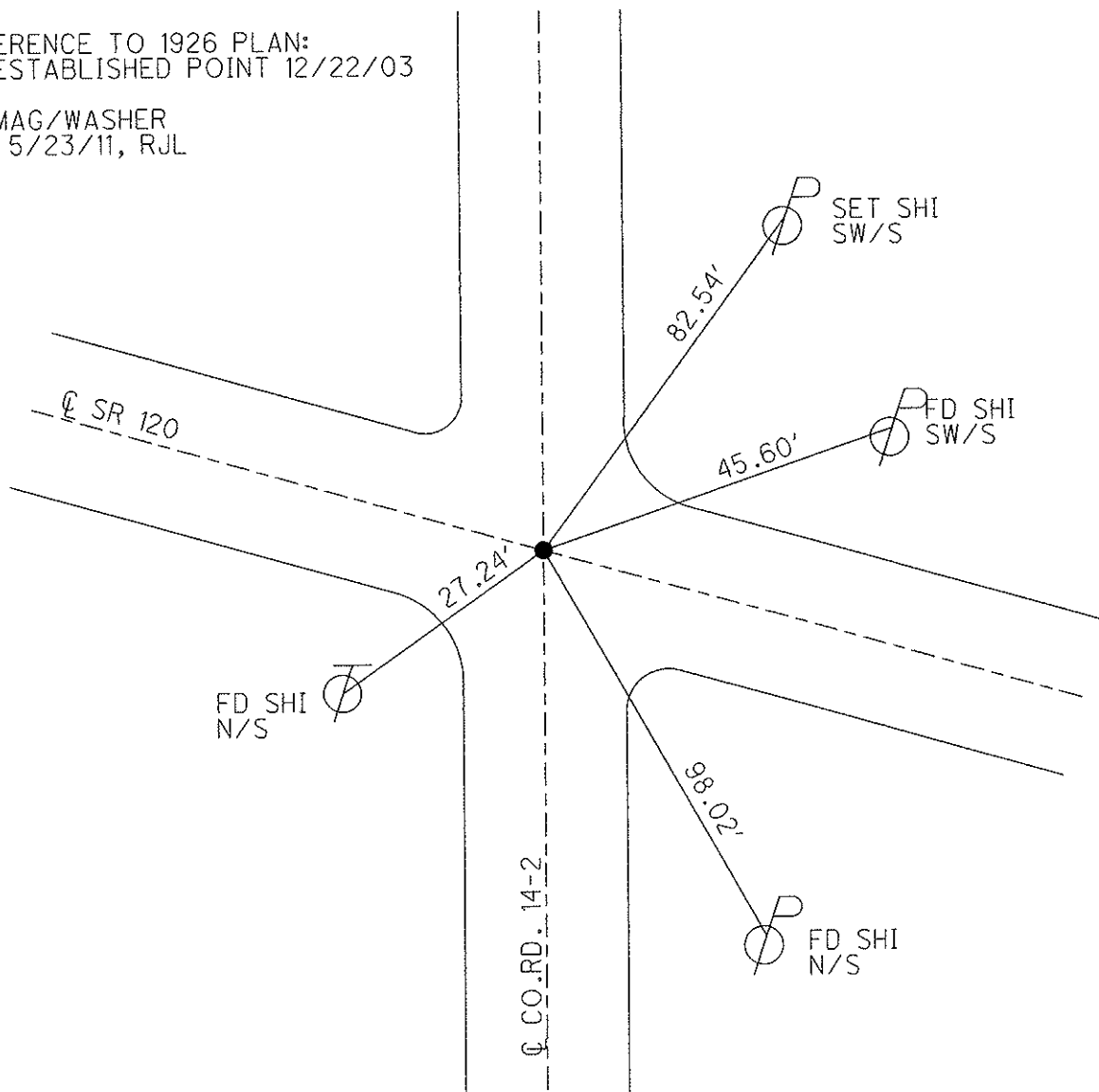
S.L.M. 91+00

Grid: Northing: 746674.237 Easting: 1519621.677



REFERENCE TO 1926 PLAN:  
RE-ESTABLISHED POINT 12/22/03

FD MAG/WASHER  
GPS 5/23/11, RJL



O.D.O.T. DISTRICT 2 SURVEY OFFICE

PERSONNEL

REFERENCE NO. 3

SHEET 6 OF 12

NOTES HOMAN

DATE 12-26-03

ROUTE SR 120

H.C. HOMAN

WEATHER SUNNY

COUNTY FULTON

R.C. BALLMER

TEMP. 30°

TOWNSHIP CHESTERFIELD

SECTION 11

T 9 S R 2 E

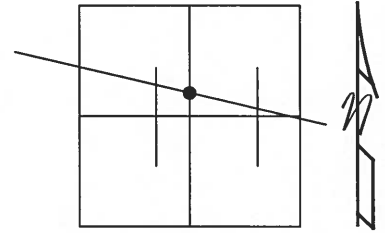
TYPE MONUMENT MAG NAIL & WASHER SET

ON SURFACE ~~- BELOW~~ ON

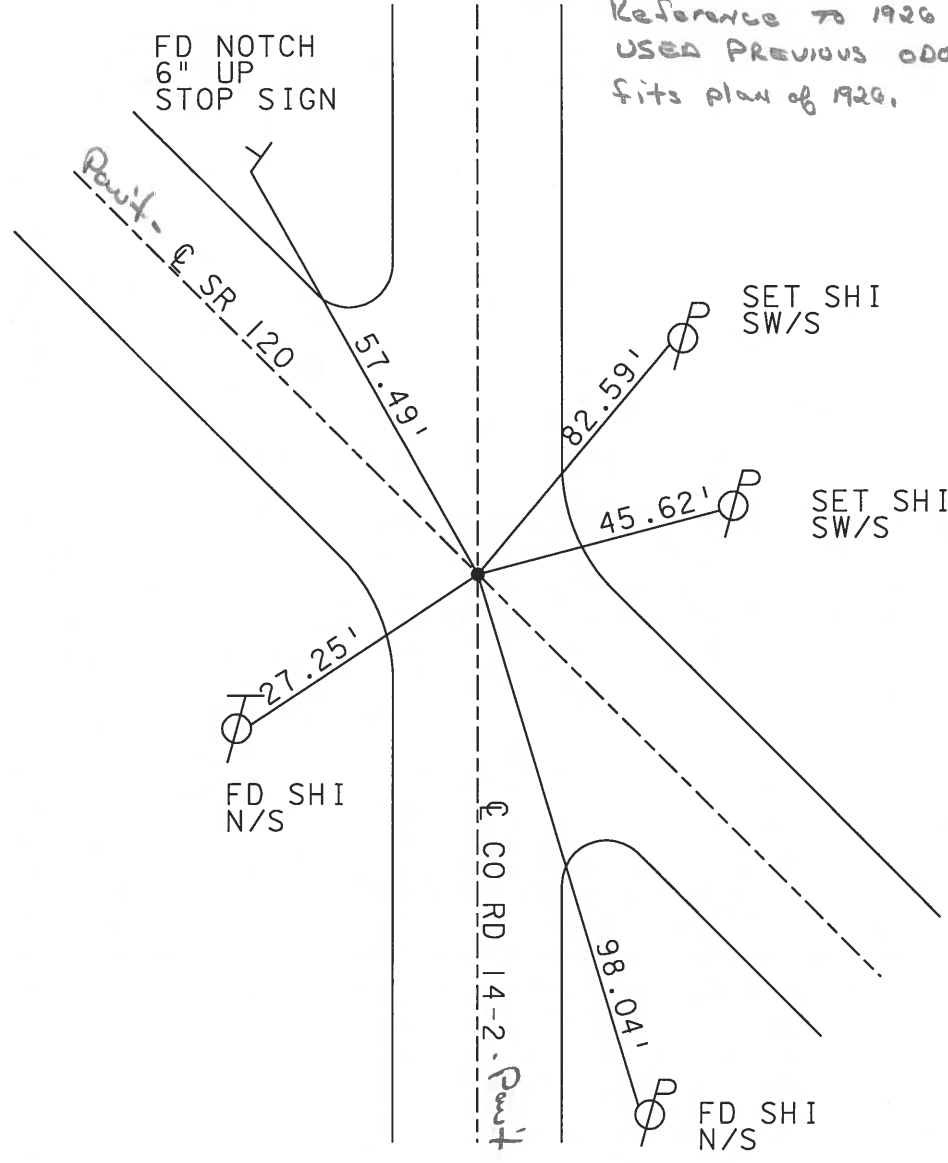
LEFT ~~- C/PART - RIGHT~~ 1'

TO EDGE PAVEMENT

S.L.M. 91+00



Reference to 1926 PLAN:  
USED PREVIOUS ODOT POINT,  
fits plan of 1926.



FD NOTCH  
6" UP  
STOP SIGN

SET SHI  
SW/S

SET SHI  
SW/S

FD SHI  
N/S

FD SHI  
N/S

O.D.O.T. DISTRICT 2 SURVEY OFFICE

PERSONNEL

REFERENCE NO. 3

SHEET 5 OF     

NOTES 1. Stone

H.C. D. Curtis

R.C. J. Hausholder

DATE 12 June 90

WEATHER Fair

TEMP. 68°

ROUTE SR#120

COUNTY Fulton

TOWNSHIP Chesterfield

SECTION 11

T      R     

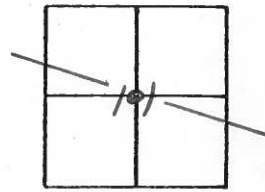
TYPE MONUMENT PK Nail

ON SURFACE - BELOW Surface

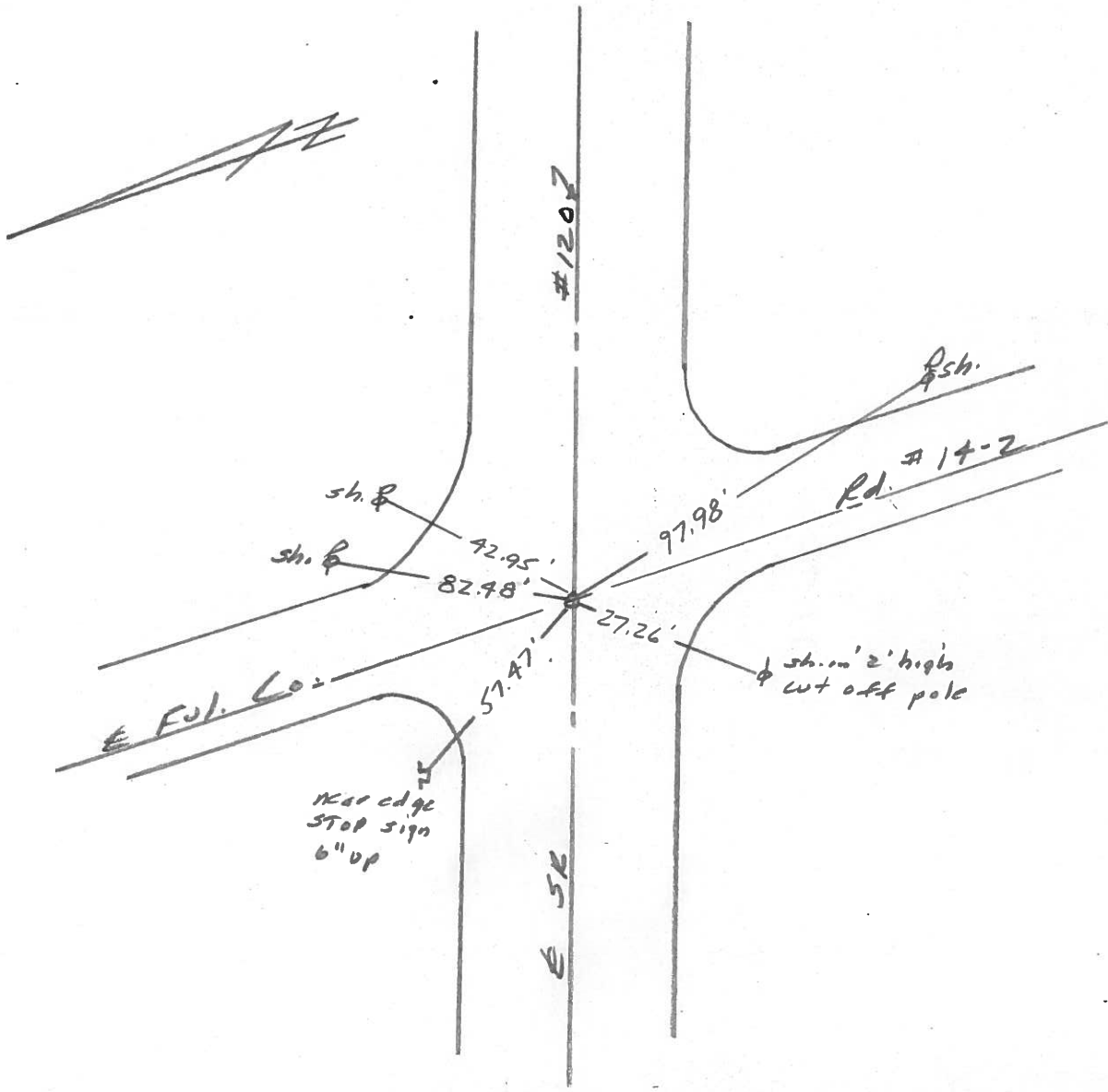
LEFT - & PAV'T. - RIGHT     

     TO      EDGE PAVEMENT

S.L.M. 91+07



Set PK Nail 8-8-90 IRS



County Fulton S.R. 120

Date 29 Aug 83

Township Chesterfield

Weather Warm

Section 11

Temp. 83

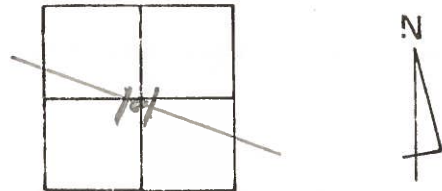
T N, R E

Personnel I. Stone

P. Neuse

R. Michalak

D. Curtis



SLM Sta. 91411

REF. No. 3

