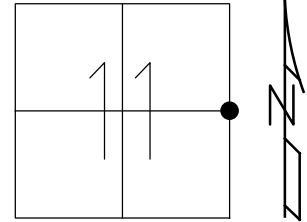


O.D.O.T. DISTRICT 2 SURVEY OFFICE (USE ONLY)

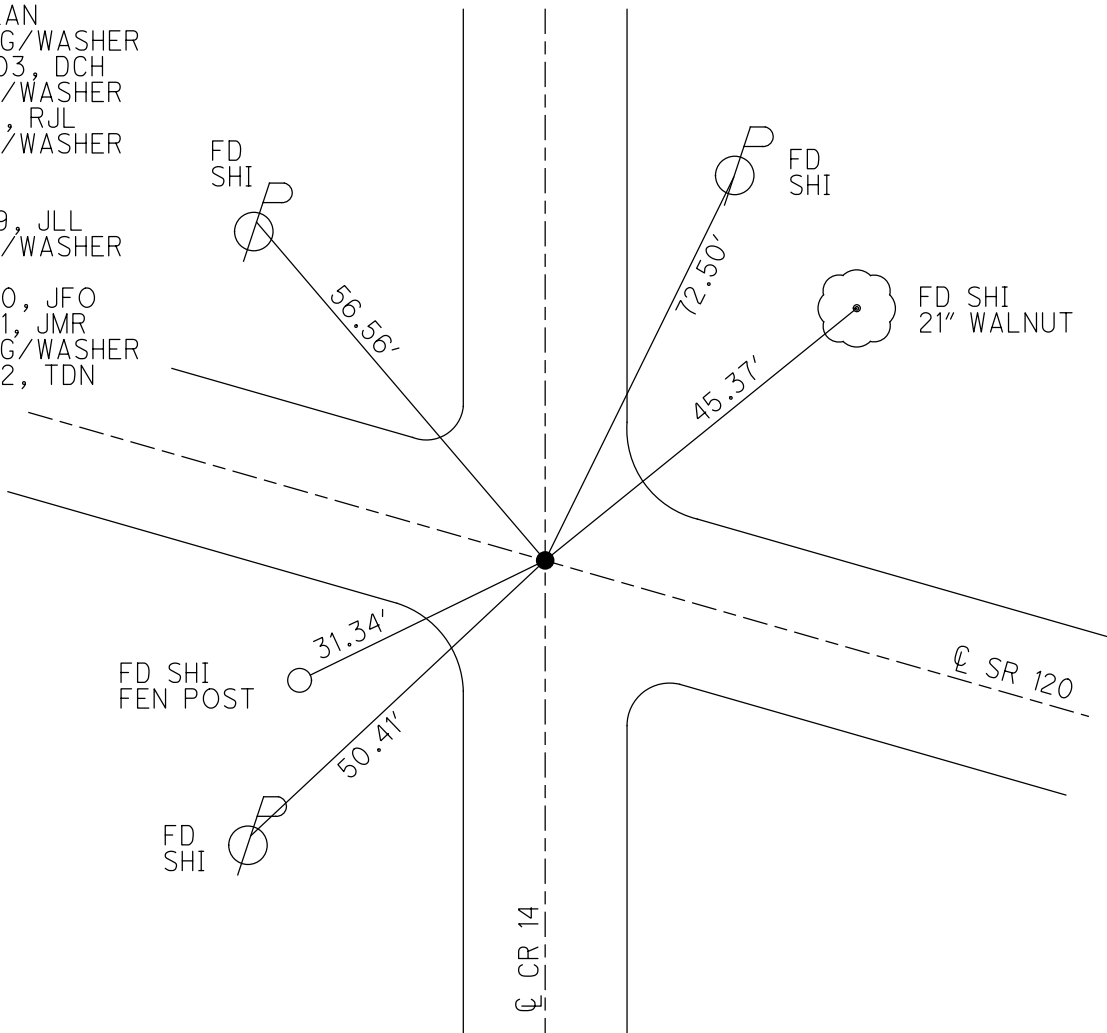
PERSONNEL _____ REFERENCE NO. 4 SHEET 10 OF 50
 NOTES NIESE _____ DATE 4/27/22 ROUTE SR 120
 H.C. O'DONNELL _____ WEATHER BREEZY COUNTY FULTON
 R.C. PARADYSZ _____ TEMP. 37° TOWNSHIP CHESTERFIELD
 AUBLE _____ SECTION 11
 DWG BY RHOADES PID 99582 T 9 N R 2 E

TYPE MONUMENT MAG/WASHER
 ON SURFACE - ~~BELOW~~ ON
 OFFSET 0.6' LT : RT
9.4' TO RT EDGE PAVEMENT
 STATION: 118+53



HORZ. DATUM: NAD83 2011 GEOID: NAVD88 2012A
 GRID: NORTHING: 745858.574 EASTING: 1522250.897

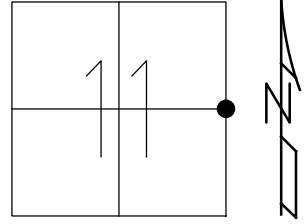
RECORD:
 1926 PLAN
 SET MAG/WASHER
 12/22/03, DCH
 FD MAG/WASHER
 5/23/11, RJL
 FD MAG/WASHER
 REF4
 5/12/17
 4/26/19, JLL
 FD MAG/WASHER
 REF4
 9/22/20, JFO
 2/26/21, JMR
 SET MAG/WASHER
 7/26/22, TDN



O.D.O.T. DISTRICT 2 SURVEY OFFICE (USE ONLY)

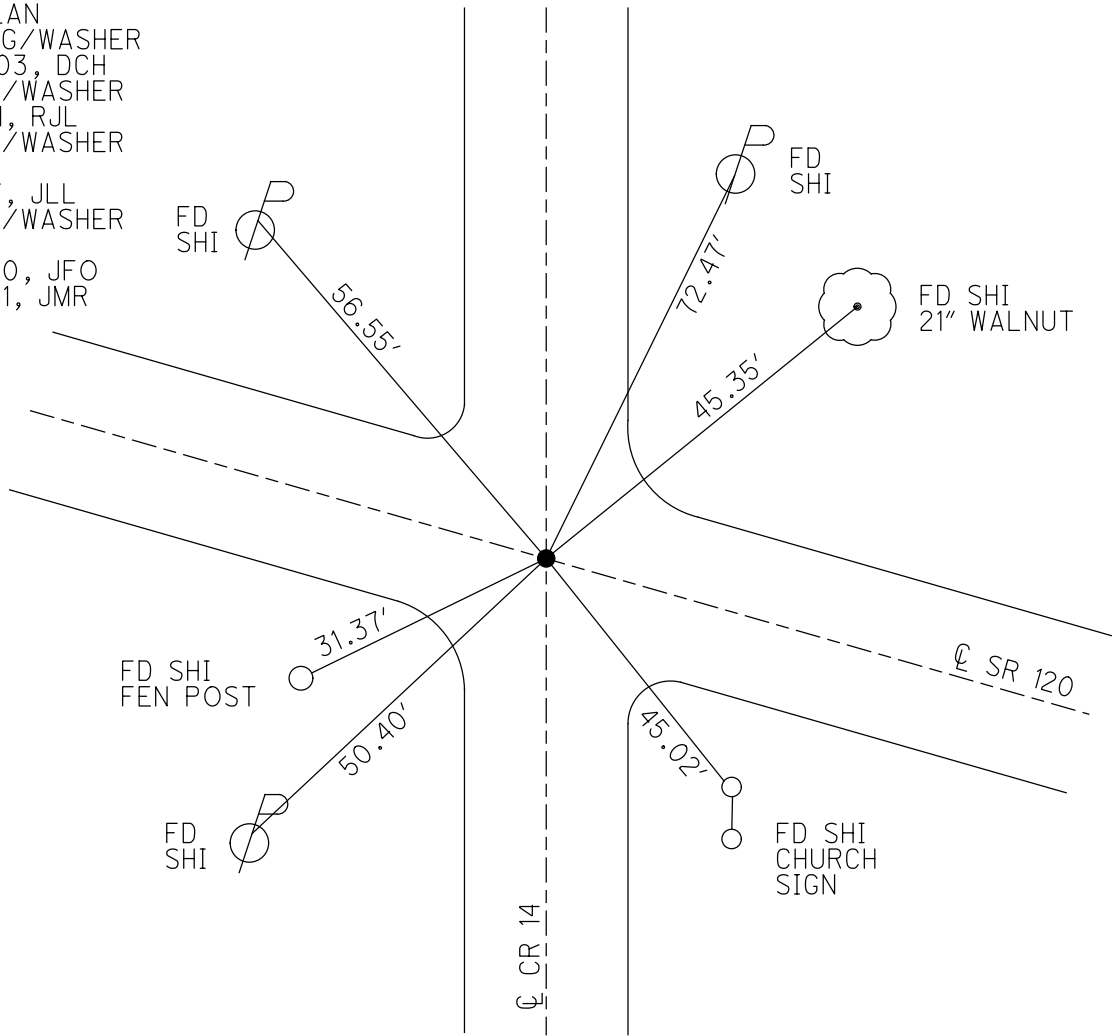
PERSONNEL _____ REFERENCE NO. 4 SHEET 9 OF 47
 NOTES NIESE DATE 2/26/21 ROUTE SR 120
 H.C. RHOADES WEATHER FAIR COUNTY FULTON
 R.C. _____ TEMP. 30° TOWNSHIP CHESTERFIELD
 DWG BY NIESE PID PAVETRAIN SECTION 11
 T 9 N R 2 E

TYPE MONUMENT MAG/WASHER
 ON SURFACE - ~~BELOW~~ ON
 OFFSET \odot PAVEMENT 0.6' ~~LT~~ : RT
9.4' TO RT EDGE PAVEMENT
 STATION: 118+53



HORZ. DATUM: NAD83 2011 GEOID: NAVD88 2012A
 GRID: NORTHING: 745858.546 EASTING: 1522250.920

RECORD:
 1926 PLAN
 SET MAG/WASHER
 12/22/03, DCH
 FD MAG/WASHER
 5/23/11, RJL
 FD MAG/WASHER
 REF4
 5/12/17, JLL
 FD MAG/WASHER
 REF4
 9/22/20, JFO
 2/26/21, JMR



O.D.O.T. DISTRICT 2 SURVEY OFFICE (USE ONLY)

PERSONNEL _____ REFERENCE NO. 4 SHEET 9 OF 47

NOTES RHOADES DATE 9/22/20 ROUTE SR 120

H.C. O'DONNELL WEATHER SUNNY COUNTY FULTON

R.C. AUBLE TEMP. 54° TOWNSHIP CHESTERFIELD

DWG BY RHOADES PID PAVETRAIN

SECTION 11

T 9 N R 2 E

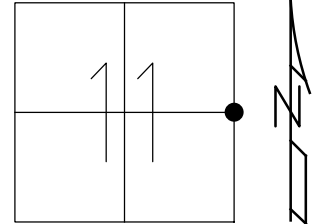
TYPE MONUMENT MAG/WASHER

ON SURFACE - ~~BELOW~~ ON

OFFSET 0.6' ET : RT

9.4' TO RT EDGE PAVEMENT

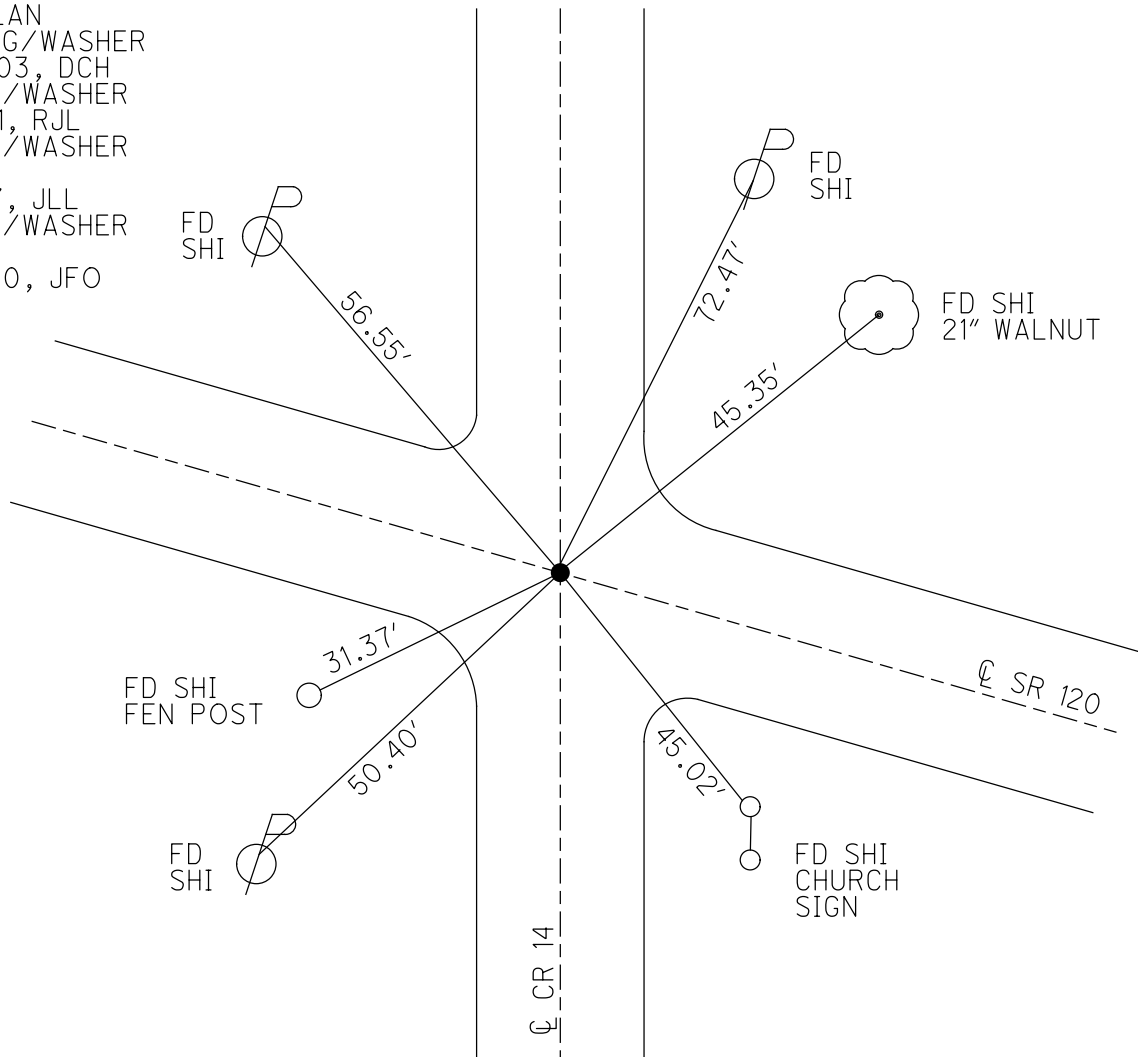
STATION: 118+53



HORZ. DATUM: NAD83 2011 GEOID: NAVD88 2012A

GRID: NORTHING: 745858.546 EASTING: 1522250.920

RECORD:
1926 PLAN
SET MAG/WASHER
12/22/03, DCH
FD MAG/WASHER
5/23/11, RJL
FD MAG/WASHER
REF4
5/12/17, JLL
FD MAG/WASHER
REF4
9/22/20, JFO



O.D.O.T. DISTRICT 2 SURVEY OFFICE (USE ONLY)

PERSONNEL _____ REFERENCE NO. 4 SHEET 9 OF 45

NOTES FINGER DATE 5/23/11 ROUTE SR 120

H.C. LUMBREZER WEATHER CLOUDY COUNTY FULTON

R.C. MOSE TEMP. 70° TOWNSHIP CHESTERFIELD

SECTION 11

T 9 N R 2 E

TYPE MONUMENT MAG/WASHER

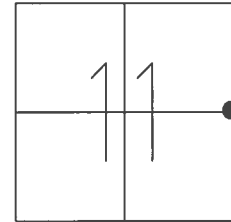
ON SURFACE - ~~BELOW~~ ON _____

~~LEFT~~ - Q PAV'T - RIGHT 0.6'

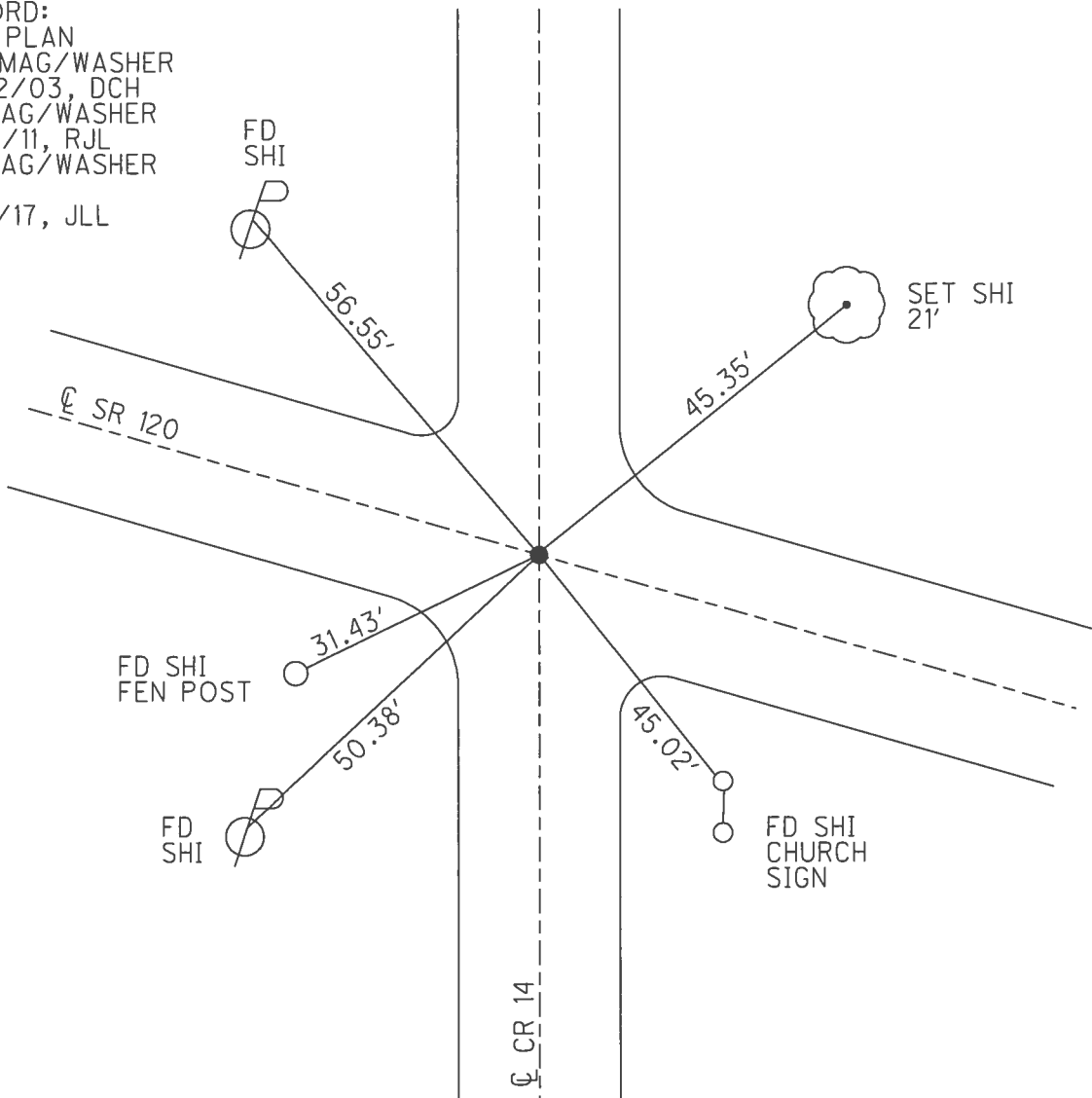
9.4' TO RT EDGE PAVEMENT

S.L.M. 118+53

GRID: NORTHING: 745858.574 EASTING: 1522250.897



RECORD:
1926 PLAN
SET MAG/WASHER
12/22/03, DCH
FD MAG/WASHER
5/23/11, RJL
FD MAG/WASHER
REF4
5/12/17, JLL



O.D.O.T. DISTRICT 2 SURVEY OFFICE

PERSONNEL

REFERENCE NO. 4

SHEET 9 OF 45

NOTES FINGER

DATE 5/23/11

ROUTE SR 120

H.C. LUMBREZER

WEATHER CLOUDY

COUNTY FULTON

R.C. MOSER

TEMP. 70°

TOWNSHIP CHESTERFIELD

SECTION 11

T 9 N R 2 E

TYPE MONUMENT MAG NAIL/WASHER

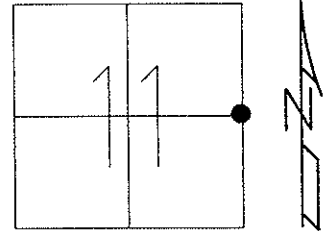
ON SURFACE - ~~BELOW~~ ON

~~LEFT~~ - Q PAV'T - RIGHT 0.6'

9.4' TO RT EDGE PAVEMENT

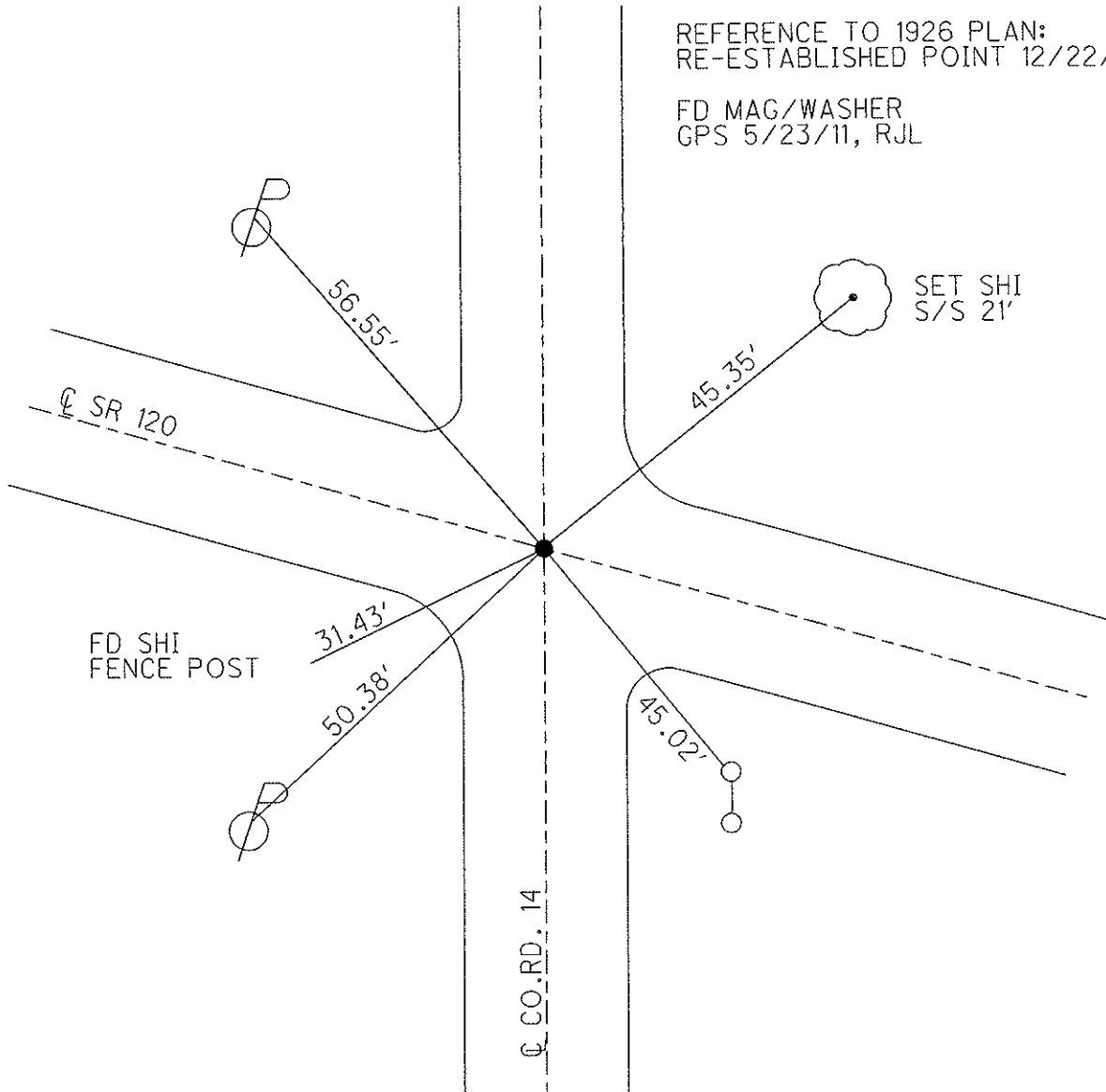
S.L.M. 118+53

Grid: Northing: 745858.526 Easting: 1522250.830



REFERENCE TO 1926 PLAN:
RE-ESTABLISHED POINT 12/22/03

FD MAG/WASHER
GPS 5/23/11, RJL



O.D.O.T. DISTRICT 2 SURVEY OFFICE

PERSONNEL

REFERENCE NO. 4

SHEET 7 OF 12

NOTES HOMAN

DATE 12-26-03

ROUTE SR 120

H.C. HOMAN

WEATHER SUNNY

COUNTY FULTON

R.C. BALLMER

TEMP. 30°

TOWNSHIP CHESTERFIELD

SECTION 11

T 9 S R 2 E

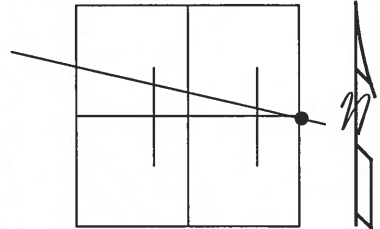
TYPE MONUMENT PK NAIL & WASHER SET

ON SURFACE - ~~BELOW~~ ON

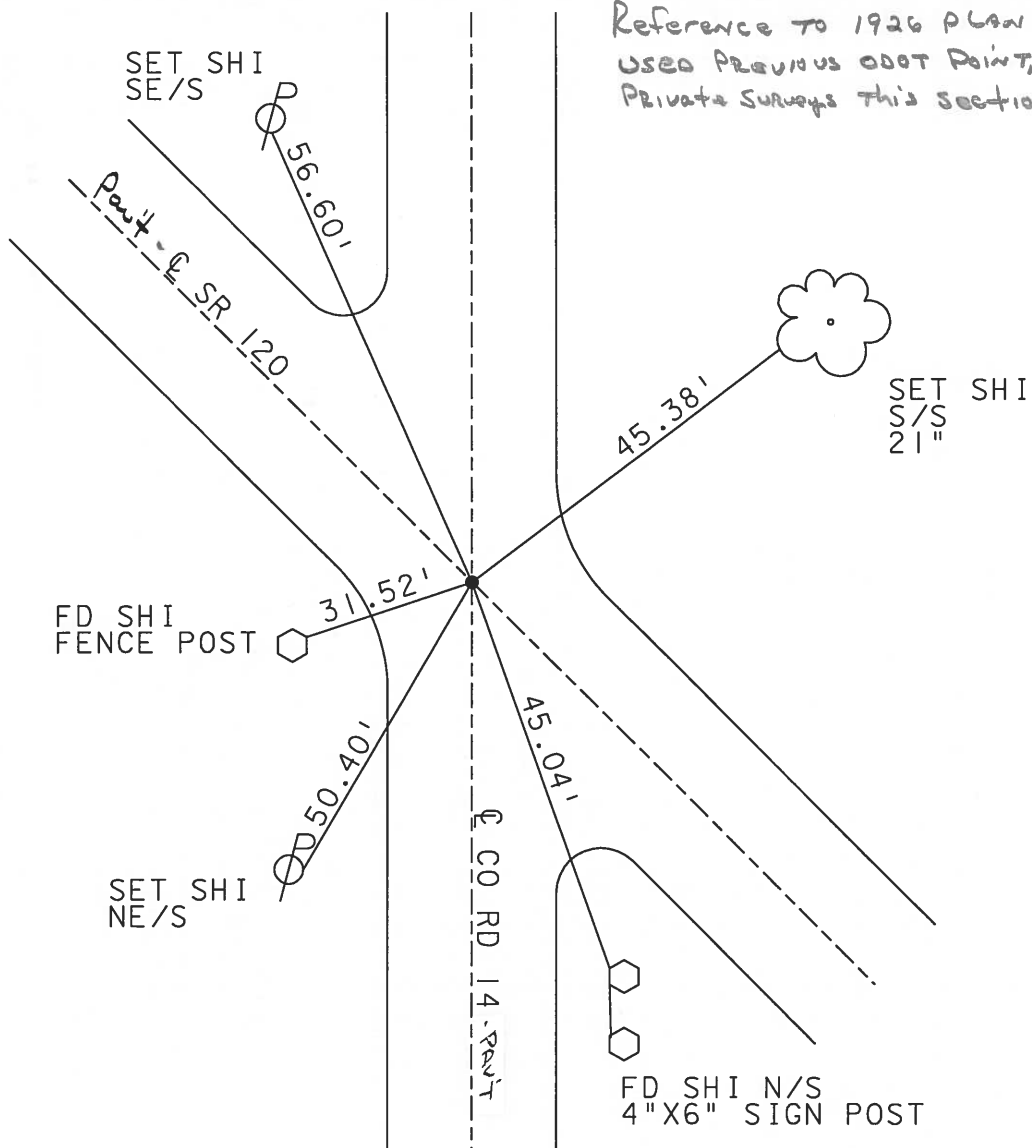
~~LEFT - C PAVT - RIGHT~~ 1'

TO EDGE PAVEMENT

S.L.M. 118+53



Reference to 1926 Plan:
USED PREVIOUS ODOT POINT, fit
PRIVATE SURVEYS THIS SECTION.



O.D.O.T. DISTRICT 2 SURVEY OFFICE

PERSONNEL _____

REFERENCE NO. 4

SHEET 6 OF _____

NOTES 1. Stone

H.C. D. Curtis

DATE 12 June 90

ROUTE SR#120

R.C. J. Householder

WEATHER Cloudy

COUNTY Fulton

TEMP. 68°

TOWNSHIP Chastanfield

SECTION 11

T _____ R _____

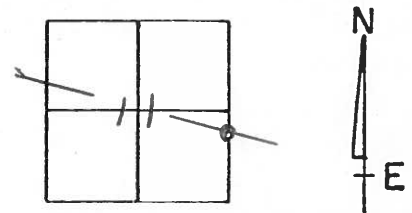
TYPE MONUMENT PK Nail

ON SURFACE - BELOW Surface

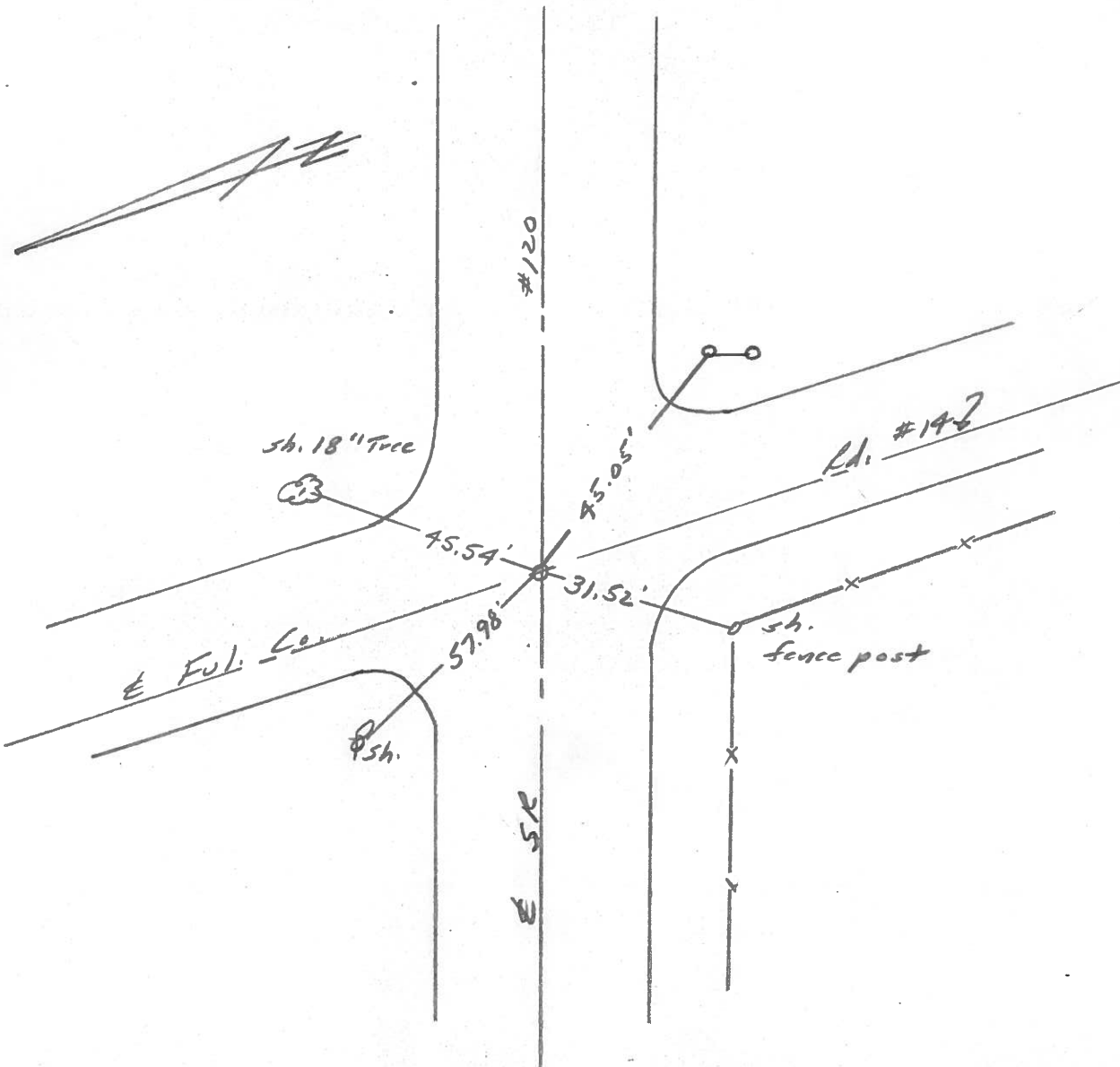
LEFT- & PAV'T. - RIGHT _____

_____ TO _____ EDGE PAVEMENT

S.L.M. 118+60



Set PK Nail 8-8-90



County Fulton S.R. 120

Date 29 Aug. 83

Township Chesterfield

Weather Warm

Section 11

Temp. 83°

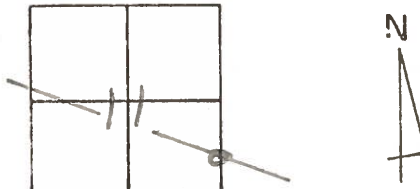
T N, R E

Personnel I. Stave

P. Neuse

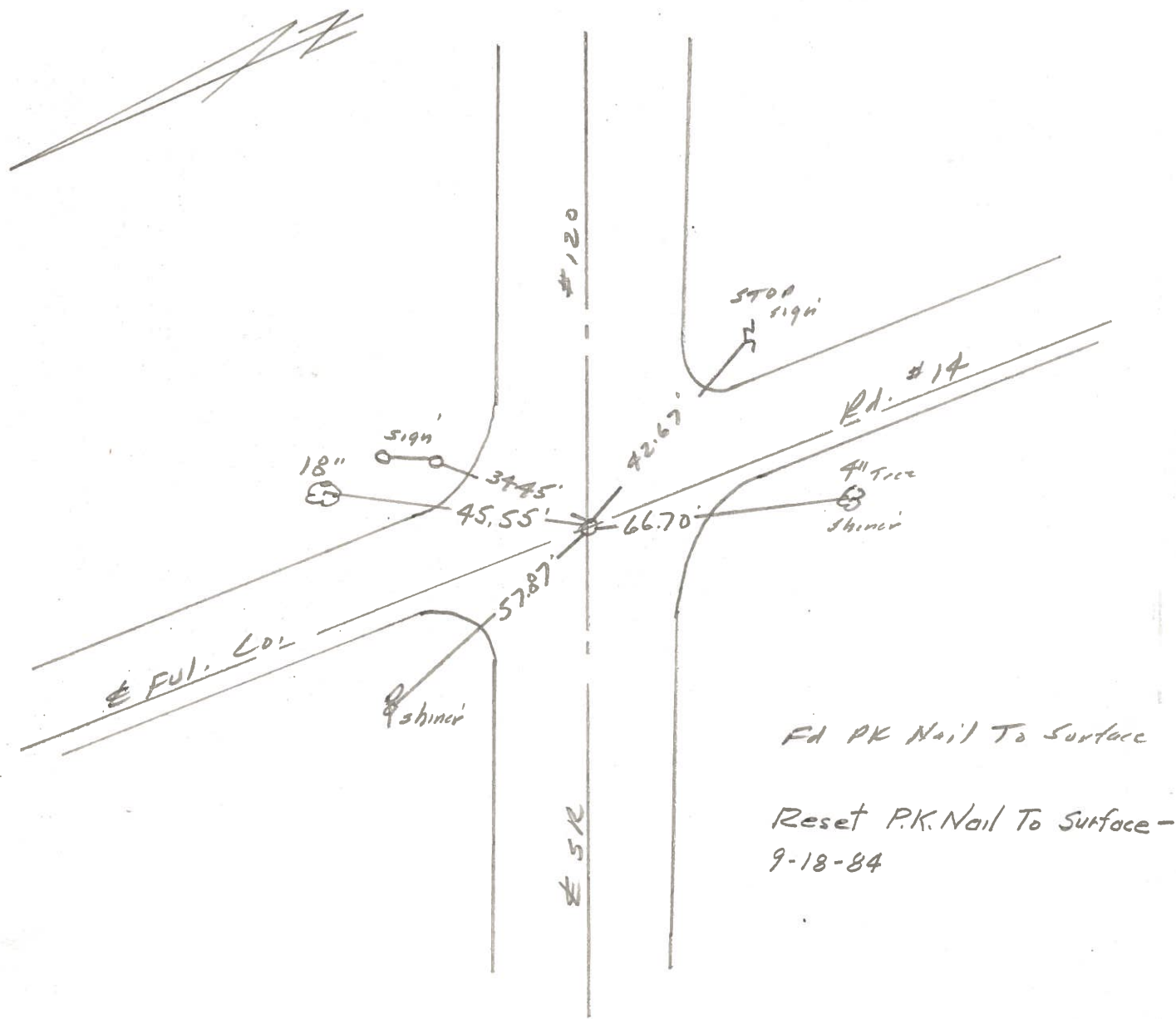
R. Michalak

D. Curtis



SLM STA. 118+65

REF. No. 4



Fd PK Nail To Surface
 Reset P.K. Nail To Surface -
 9-18-84