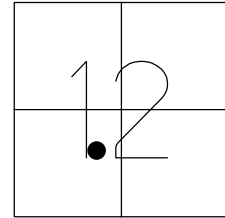


O.D.O.T. DISTRICT 2 SURVEY OFFICE (USE ONLY)

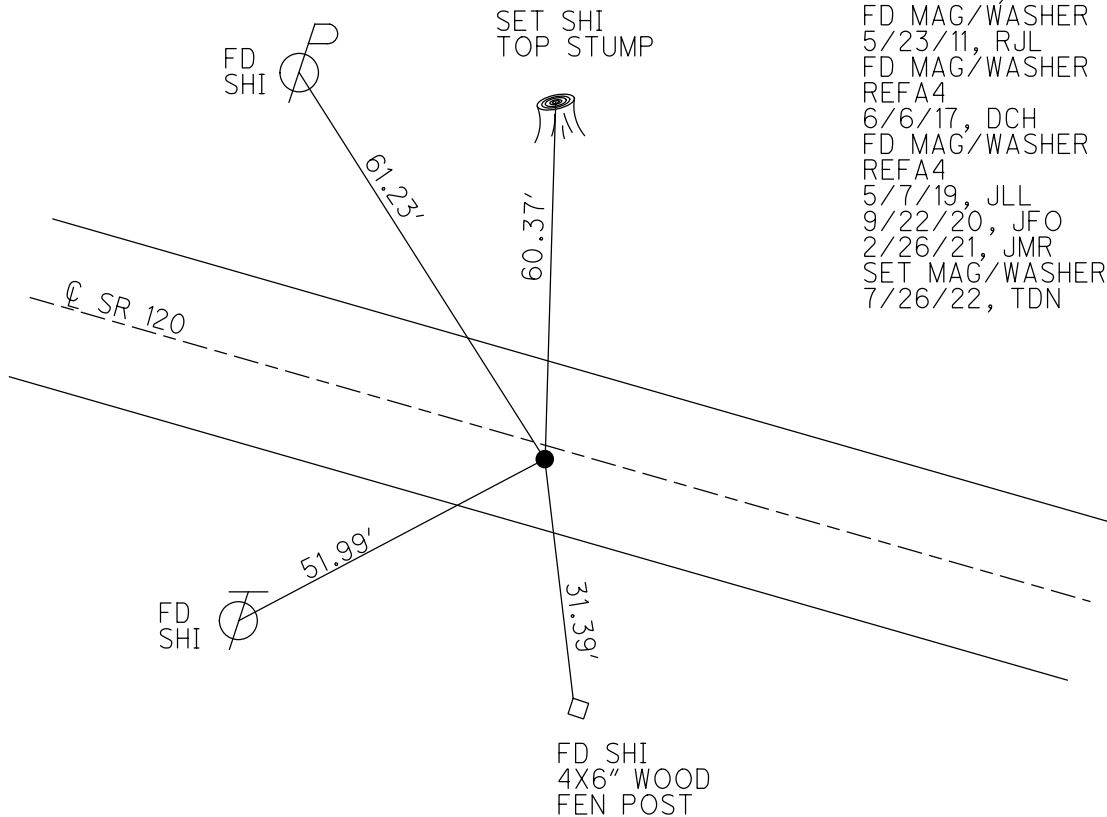
PERSONNEL _____ REFERENCE NO. 4 A SHEET 11 OF 50
 NOTES NIESE DATE 4/27/22 ROUTE SR 120
 H.C. O'DONNELL WEATHER CALM COUNTY FULTON
 R.C. PARADYSZ TEMP. 37° TOWNSHIP CHESTERFIELD
AUBLE SECTION 12
 DWG BY RHOADES PID 99582 T 9 N R 2 E

TYPE MONUMENT MAG/WASHER
 ON SURFACE - ~~BELOW~~ ON
 OFFSET Q PAVEMENT 1.1' LT : RT
9.1' TO RT EDGE PAVEMENT
 STATION: 132+66



HORZ. DATUM: NAD83 2011 GEOID: NAVD88 2012A
 GRID: NORTHING: 745439.932 EASTING: 1523600.761

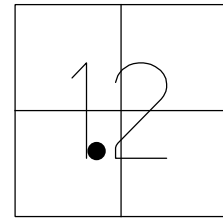
RECORD:
 1926 PLAN
 SET MAG/WASHER
 12/22/03, DCH
 FD MAG/WASHER
 5/23/11, RJL
 FD MAG/WASHER
 REFA4
 6/6/17, DCH
 FD MAG/WASHER
 REFA4
 5/7/19, JLL
 9/22/20, JFO
 2/26/21, JMR
 SET MAG/WASHER
 7/26/22, TDN



O.D.O.T. DISTRICT 2 SURVEY OFFICE (USE ONLY)

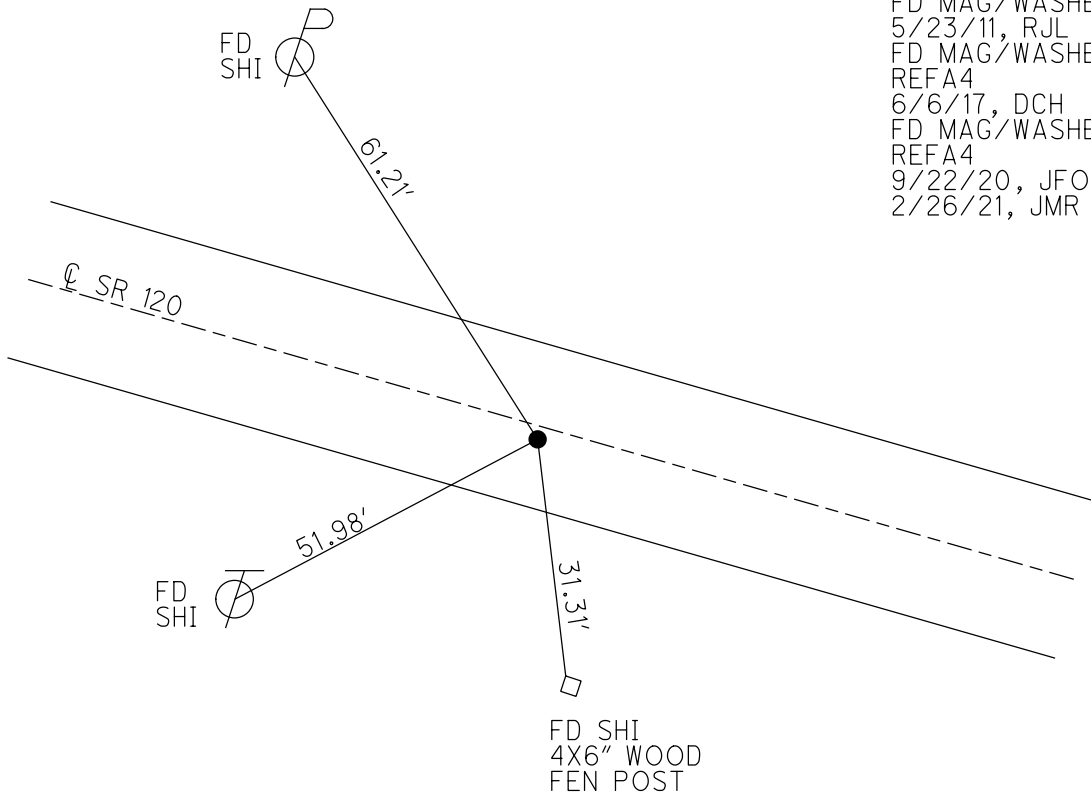
PERSONNEL _____ REFERENCE NO. 4 A SHEET 10 OF 47
 NOTES NIESE DATE 2/26/21 ROUTE SR 120
 H.C. RHOADES WEATHER FAIR COUNTY FULTON
 R.C. _____ TEMP. 30° TOWNSHIP CHESTERFIELD
 DWG BY NIESE PID PAVETRAIN SECTION 12
 T 9 N R 2 E

TYPE MONUMENT MAG/WASHER
 ON SURFACE - ~~BELOW~~ ON _____
 OFFSET \bar{C} PAVEMENT 1.1' ~~LT~~ : RT
9.1' TO RT EDGE PAVEMENT
 STATION: 132+66



HORZ. DATUM: NAD83 2011 GEOID: NAVD88 2012A
 GRID: NORTHING: 745439.920 EASTING: 1523600.788

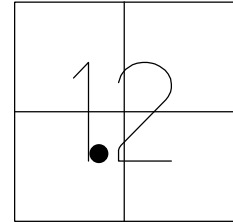
RECORD:
 1926 PLAN
 SET MAG/WASHER
 12/22/03, DCH
 FD MAG/WASHER
 5/23/11, RJL
 FD MAG/WASHER
 REFA4
 6/6/17, DCH
 FD MAG/WASHER
 REFA4
 9/22/20, JFO
 2/26/21, JMR



O.D.O.T. DISTRICT 2 SURVEY OFFICE (USE ONLY)

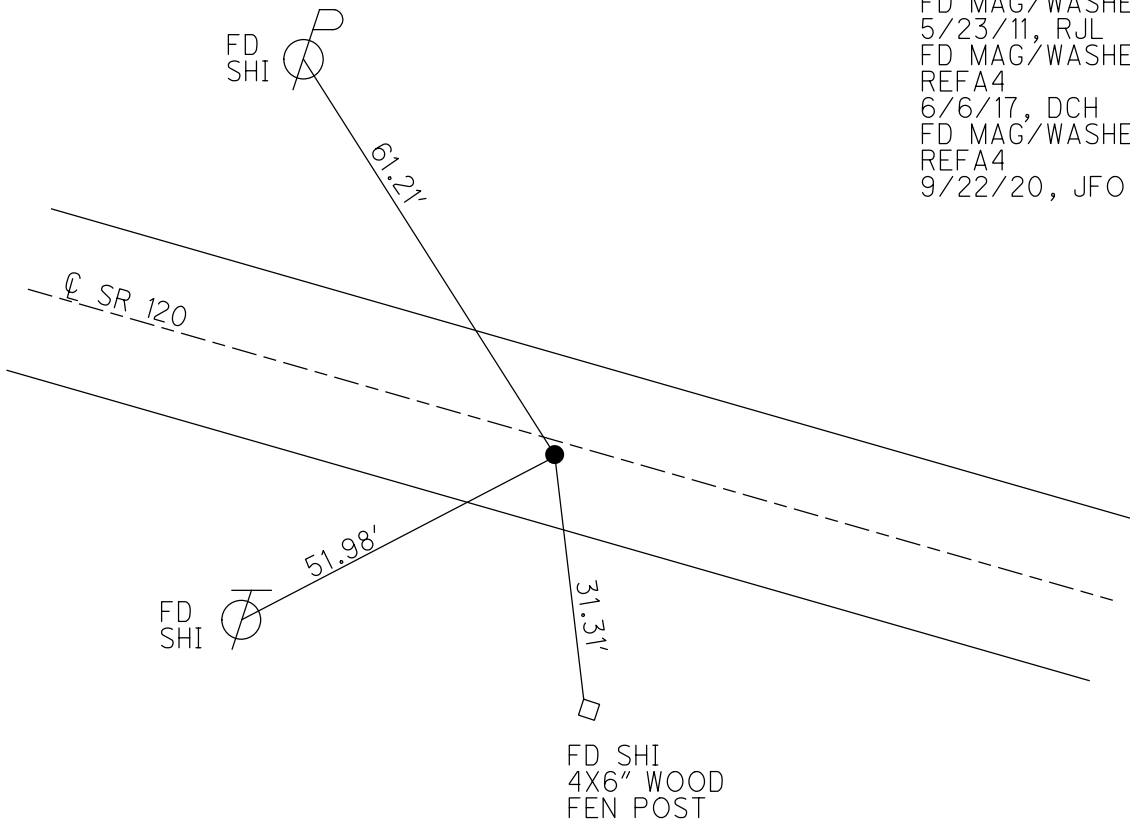
PERSONNEL _____ REFERENCE NO. 4 A SHEET 10 OF 47
 NOTES RHOADES DATE 5-23-11 ROUTE SR 120
 H.C. O'DONNELL WEATHER CLOUDY COUNTY FULTON
 R.C. AUBLE TEMP. 70°F TOWNSHIP CHESTERFIELD
 DWG BY RHOADES PID PAVETRAIN SECTION 12
 T 9 N R 2 E

TYPE MONUMENT MAG/WASHER
 ON SURFACE - ~~BELOW~~ ON
 OFFSET \odot PAVEMENT 1.1' ~~ET~~ : RT
9.1' TO RT EDGE PAVEMENT
 STATION: 132+66



HORZ. DATUM: NAD83 2011 GEOID: NAVD88 2012A
 GRID: NORTHING: 745439.920 EASTING: 1523600.788

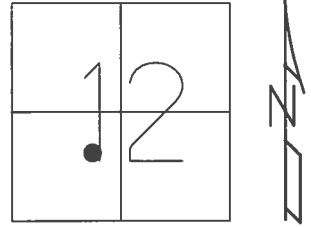
RECORD:
 1926 PLAN
 SET MAG/WASHER
 12/22/03, DCH
 FD MAG/WASHER
 5/23/11, RJL
 FD MAG/WASHER
 REFA4
 6/6/17, DCH
 FD MAG/WASHER
 REFA4
 9/22/20, JFO



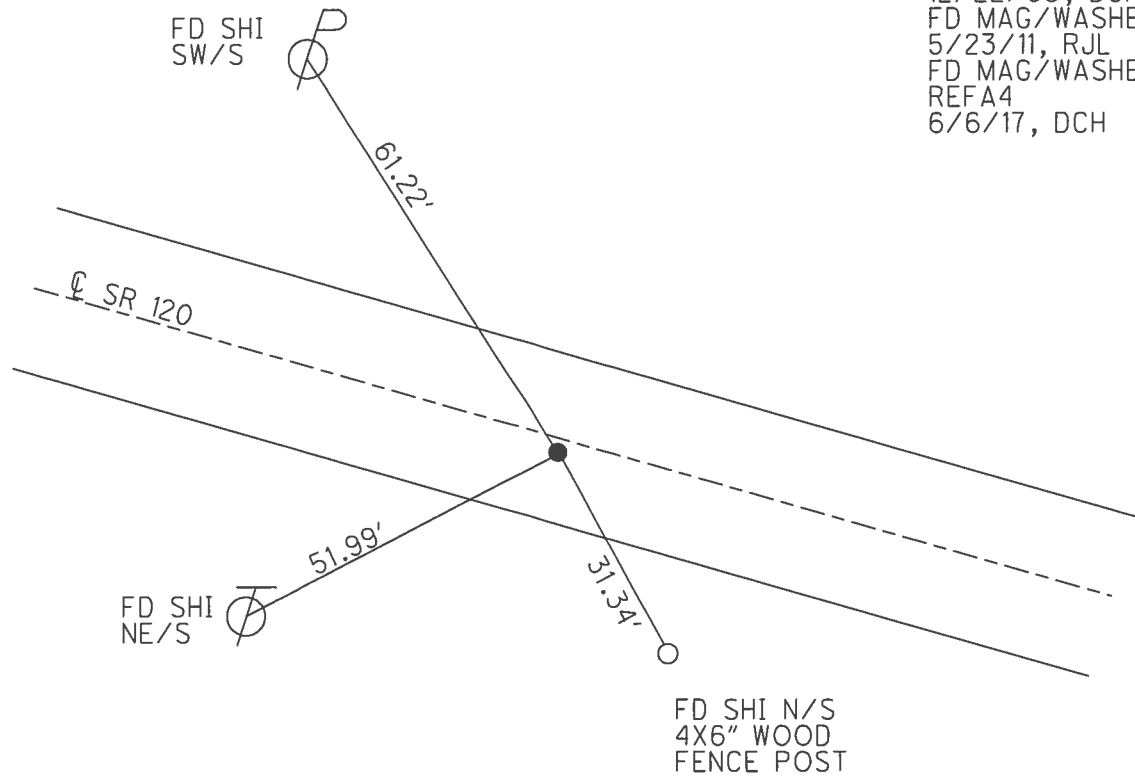
O.D.O.T. DISTRICT 2 SURVEY OFFICE (USE ONLY)

PERSONNEL _____ REFERENCE NO. 4 A SHEET 10 OF 45
 NOTES FINGER DATE 5/23/11 ROUTE SR 120
 H.C. LUMBREZER WEATHER CLOUDY COUNTY FULTON
 R.C. MOSER TEMP. 70° TOWNSHIP CHESTERFIELD
 _____ SECTION 11
 _____ T 9 N R 2 E

TYPE MONUMENT MAG/WASHER
 ON SURFACE - ~~BELOW~~ ON _____
~~LEFT~~ - ☉ PAV'T - RIGHT 1.1'
9.1' TO RT EDGE PAVEMENT
 S.L.M. 132+66
 GRID: NORTHING: 745439.932 EASTING: 1523600.761



RECORD:
 1926 PLAN
 SET MAG/WASHER
 12/22/03, DCH
 FD MAG/WASHER
 5/23/11, RJL
 FD MAG/WASHER
 REFA4
 6/6/17, DCH



O.D.O.T. DISTRICT 2 SURVEY OFFICE

PERSONNEL

REFERENCE NO. 4 A

SHEET 10 OF 45

NOTES FINGER

DATE 5/23/11

ROUTE SR 120

H.C. LUMBREZER

WEATHER CLOUDY

COUNTY FULTON

R.C. MOSER

TEMP. 70°

TOWNSHIP CHESTERFIELD

SECTION 11

T 9 N R 2 E

TYPE MONUMENT MAG NAIL/WASHER

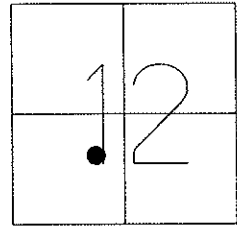
ON SURFACE - ~~BELOW~~ ON

~~LEFT~~ - Q PAV'T - RIGHT 1.1'

9.1' TO RT EDGE PAVEMENT

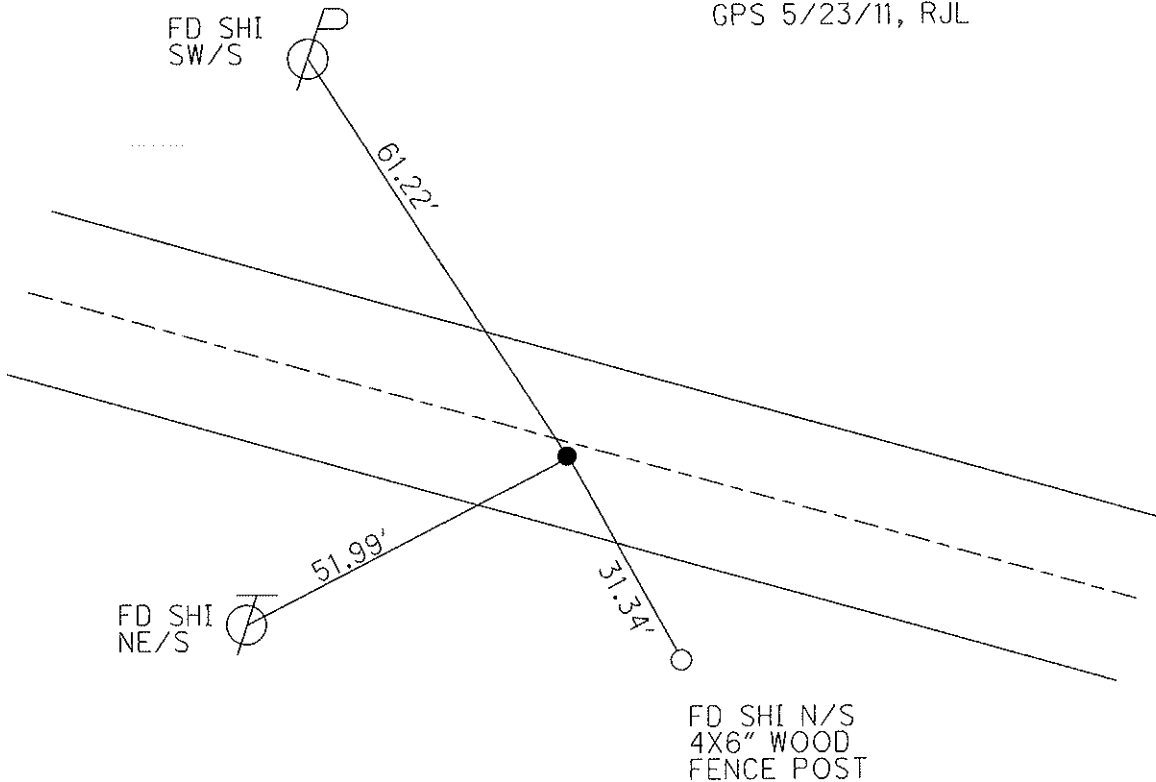
S.L.M. 132+66

Grid: Northing: 745439.892 Easting: 1523600.758



REFERENCE TO 1926 PLAN:
RE-ESTABLISHED POINT 12/22/03

FD MAG/WASHER
GPS 5/23/11, RJL



O.D.O.T. DISTRICT 2 SURVEY OFFICE

PERSONNEL

REFERENCE NO. 4-A

SHEET 8 OF 12

NOTES HOMAN

DATE 12-26-03

ROUTE SR 120

H.C. HOMAN

WEATHER SUNNY

COUNTY FULTON

R.C. BALLMER

TEMP. 30°

TOWNSHIP CHESTERFIELD

SECTION 12

T 9 S R 2 E

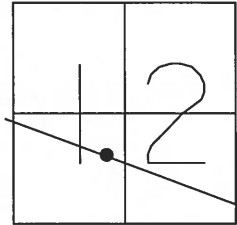
TYPE MONUMENT MAG NAIL & WASHER Set

ON SURFACE - ~~BELOW~~ ON

~~LEFT - C PAV'T - RIGHT~~ 1'

TO EDGE PAVEMENT

S.L.M. 132+66



Reference to 1926 PLAN:

Re-ESTABLISHED point 12-22-03

