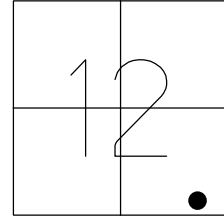


O.D.O.T. DISTRICT 2 SURVEY OFFICE (USE ONLY)

PERSONNEL _____ REFERENCE NO. 5 SHEET 12 OF 50
 NOTES NIESE DATE 4/27/22 ROUTE SR 120
 H.C. O'DONNELL WEATHER WINDY COUNTY FULTON
 R.C. PARADYSZ TEMP. 42° TOWNSHIP CHESTERFIELD
AUBLE SECTION 12
 DWG BY RHOADES PID 99582 T 9 N R 2 E

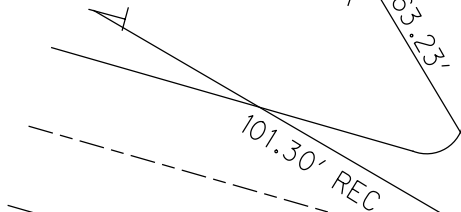
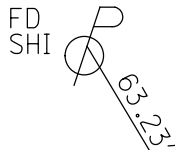
TYPE MONUMENT MAG/WASHER
 ON SURFACE - ~~BELOW~~ ON
 OFFSET \odot PAVEMENT 1.2' LT : ~~RT~~
- TO - EDGE PAVEMENT
 STATION: 161+00



HORZ. DATUM: NAD83 2011 GEOID: NAVD88 2012A
 GRID: NORTHING: 744595.936 EASTING: 1526305.380

RECORD:
 1926 PLAN
 SET MAG/WASHER
 12/22/03, DCH
 FD MAG/WASHER
 5/23/11, RJL
 FD MAG/WASHER
 REF5
 5/12/17
 4/26/19, JLL
 9/22/20, JFO
 2/26/21, JMR
 SET MAG/WASHER
 7/26/22, TDN

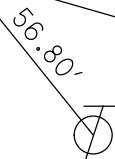
FD NOTCH
 1' UP SR 120
 SIGN POST



FD 3" PIPE
 OLD USGS BM
 N.EDGE



\odot CR 13-1



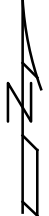
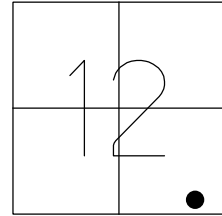
FD SHI
 BEHIND
 CONDUIT
 COVER

\odot SR 120

O.D.O.T. DISTRICT 2 SURVEY OFFICE (USE ONLY)

PERSONNEL _____ REFERENCE NO. 5 SHEET 11 OF 47
 NOTES NIESE DATE 2/26/21 ROUTE SR 120
 H.C. RHOADES WEATHER FAIR COUNTY FULTON
 R.C. _____ TEMP. 30° TOWNSHIP CHESTERFIELD
 DWG BY NIESE PID PAVETRAIN SECTION 12
 T 9 N R 2 E

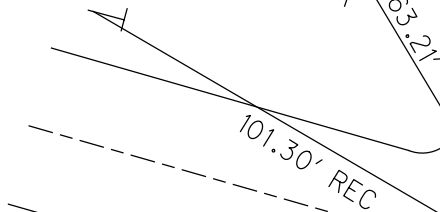
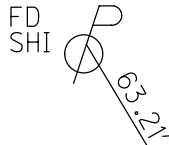
TYPE MONUMENT MAG/WASHER
 ON SURFACE - ~~BELOW~~ ON
 OFFSET Q PAVEMENT 1.2' LT : RT
 - TO - EDGE PAVEMENT
 STATION: 161+00



HORZ. DATUM: NAD83 2011 GEOID: NAVD88 2012A
 GRID: NORTHING: 744595.937 EASTING: 1526305.411

RECORD:
 1926 PLAN
 SET MAG/WASHER
 12/22/03, DCH
 FD MAG/WASHER
 5/23/11, RJL
 FD MAG/WASHER
 REF5
 5/12/17, JLL
 FD MAG/WASHER
 REF5
 9/22/20, JFO
 2/26/21, JMR

FD NOTCH
 1' UP SR 120
 SIGN POST

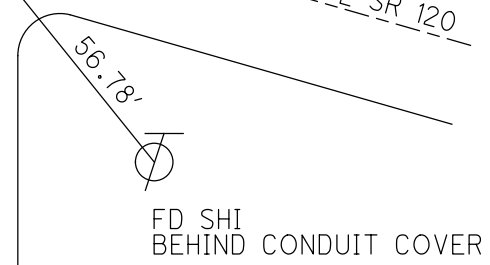


FD 3" PIPE
 OLD USGS BM
 N.EDGE

SET
 MAG



Q CR 13-1

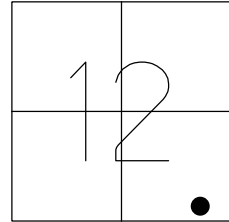


FD SHI
 BEHIND CONDUIT COVER

O.D.O.T. DISTRICT 2 SURVEY OFFICE (USE ONLY)

PERSONNEL _____ REFERENCE NO. 5 SHEET 11 OF 47
 NOTES RHOADES DATE 9/22/20 ROUTE SR 120
 H.C. O'DONNELL WEATHER SUNNY COUNTY FULTON
 R.C. AUBLE TEMP. 54° TOWNSHIP CHESTERFIELD
 DWG BY RHOADES PID PAVETRAIN SECTION 12
 T 9 N R 2 E

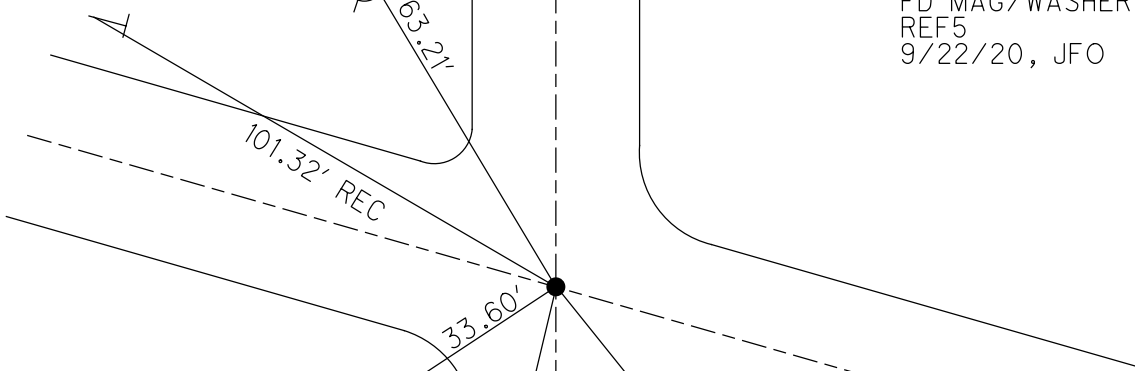
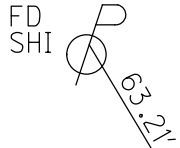
TYPE MONUMENT MAG/WASHER
 ON SURFACE - ~~BELOW~~ ON
 OFFSET \varnothing PAVEMENT 1.2' LT : ~~RT~~
- TO - EDGE PAVEMENT
 STATION: 161+00



HORZ. DATUM: NAD83 2011 GEOID: NAVD88 2012A
 GRID: NORTHING: 744595.937 EASTING: 1526305.411

RECORD:
 1926 PLAN
 SET MAG/WASHER
 12/22/03, DCH
 FD MAG/WASHER
 5/23/11, RJL
 FD MAG/WASHER
 REF5
 5/12/17, JLL
 FD MAG/WASHER
 REF5
 9/22/20, JFO

FD NOTCH
 1' UP SR 120
 SIGN POST



FD 3" PIPE
 OLD USGS BM
 N.EDGE

SET
 MAG

FD SHI
 BEHIND CONDUIT COVER

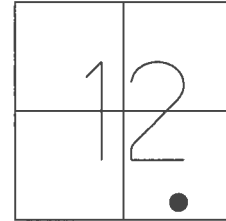
\varnothing CR 13-1

O.D.O.T. DISTRICT 2 SURVEY OFFICE (USE ONLY)

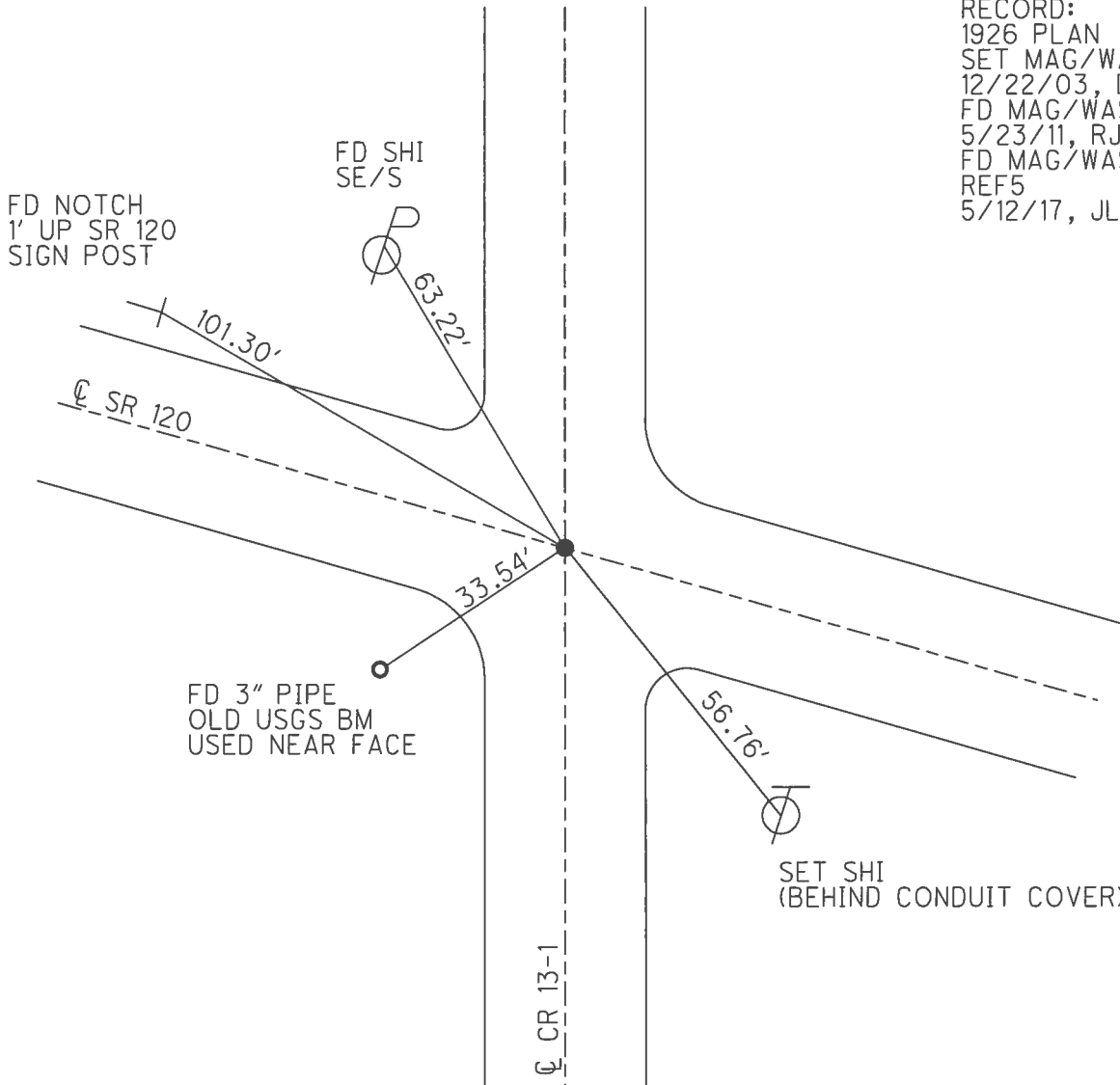
PERSONNEL _____ REFERENCE NO. 5 SHEET 11 OF 45

NOTES FINGER _____ DATE 5/23/11 ROUTE SR 120
 H.C. LUMBREZER WEATHER CLOUDY COUNTY FULTON
 R.C. MOSER TEMP. 70° TOWNSHIP CHESTERFIELD
 _____ SECTION 12
 _____ T 9 N R 2 E

TYPE MONUMENT MAG/WASHER
 ON SURFACE - ~~BELOW~~ ON _____
 LEFT - ☉ PAV'T - ~~RIGHT~~ 1.2'
8.7' TO LT EDGE PAVEMENT
 S.L.M. 161+00
 GRID: NORTHING: 744595.936 EASTING: 1526305.380



RECORD:
 1926 PLAN
 SET MAG/WASHER
 12/22/03, DCH
 FD MAG/WASHER
 5/23/11, RJL
 FD MAG/WASHER
 REF5
 5/12/17, JLL



O.D.O.T. DISTRICT 2 SURVEY OFFICE

PERSONNEL

REFERENCE NO. 5

SHEET 11 OF 45

NOTES FINGER

DATE 5/23/11

ROUTE SR 120

H.C. LUMBREZER

WEATHER CLOUDY

COUNTY FULTON

R.C. MOSER

TEMP. 70°

TOWNSHIP CHESTERFIELD

SECTION 12

T 9 N R 2 E

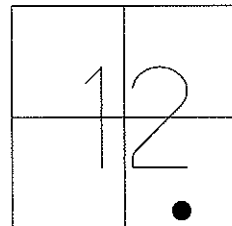
TYPE MONUMENT MAG NAIL/WASHER

ON SURFACE - ~~BELOW~~ ON

LEFT - Q PAV'T - ~~RIGHT~~ 1.2'

8.7' TO LT EDGE PAVEMENT

S.L.M. 161+00



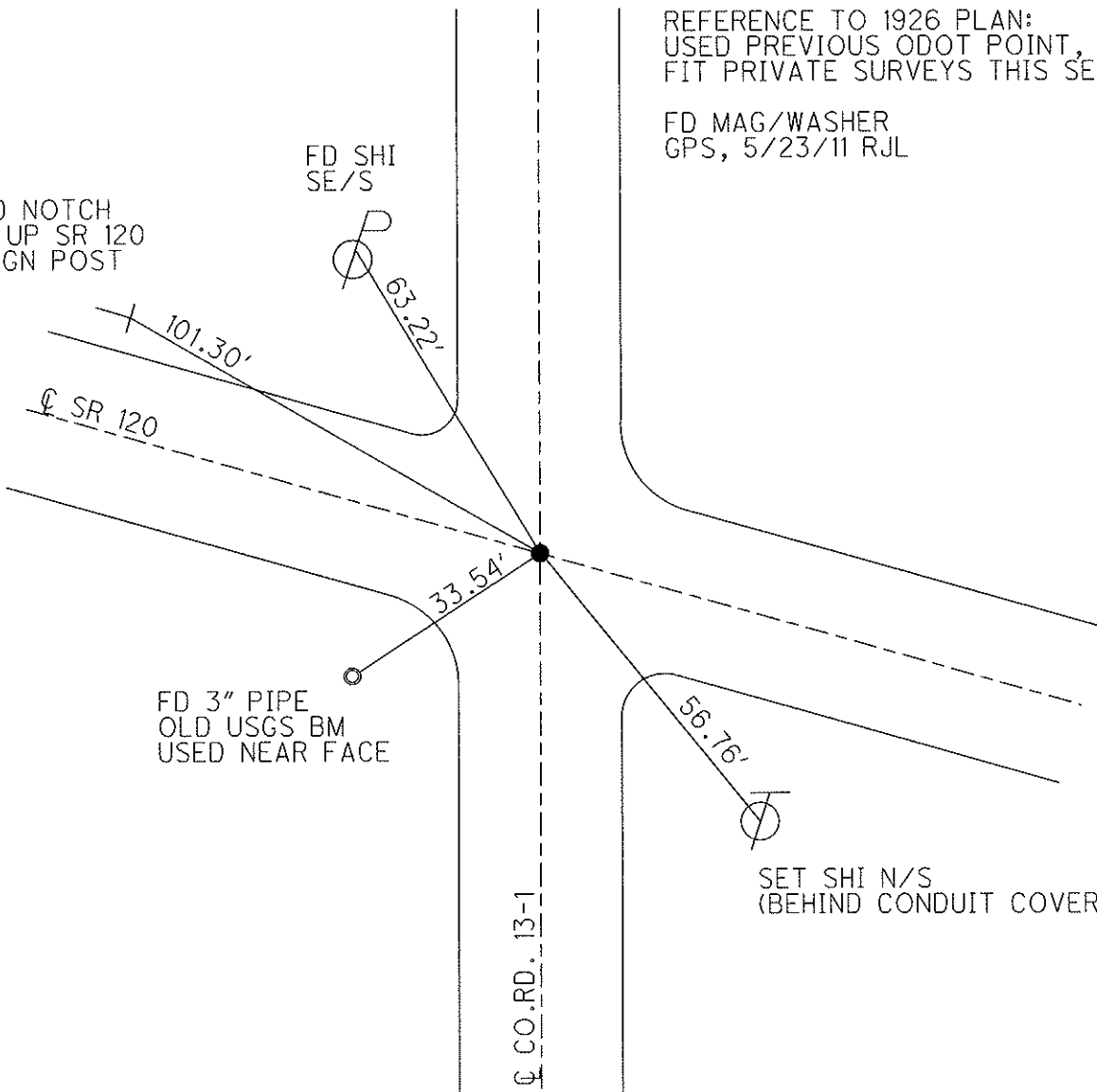
Grid: Northing: 744595.884 Easting: 1526305.381

REFERENCE TO 1926 PLAN:
USED PREVIOUS ODOT POINT,
FIT PRIVATE SURVEYS THIS SECTION.

FD MAG/WASHER
GPS, 5/23/11 RJL

FD NOTCH
1' UP SR 120
SIGN POST

FD SHI
SE/S



FD 3" PIPE
OLD USGS BM
USED NEAR FACE

SET SHI N/S
(BEHIND CONDUIT COVER)

O.D.O.T. DISTRICT 2 SURVEY OFFICE

PERSONNEL

REFERENCE NO. 5

SHEET 9 OF 12

NOTES HOMAN

DATE 12-26-03

ROUTE SR 120

H.C. HOMAN

WEATHER SUNNY

COUNTY FULTON

R.C. BALLMER

TEMP. 30°

TOWNSHIP CHESTERFIELD

SECTION 12

T 9 S R 2 E

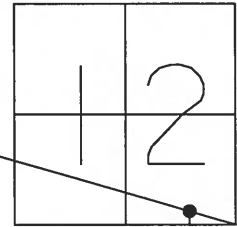
TYPE MONUMENT MAG NAIL & WASHER set

ON SURFACE ~~BELOW~~ ON

LEFT ~~- C - PAVT - RIGHT~~ 1'

TO EDGE PAVEMENT

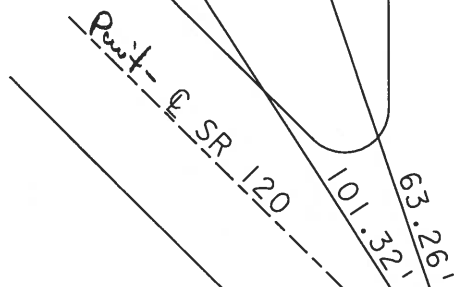
S.L.M. 161+00



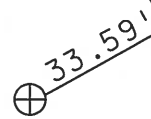
SET NOTCH
1 FT UP SR 120
SIGN POST

FD SHI
SE/S

*Reference to 1926 PLAN!
USED PREVIOUS ODOT POINT,
fit private surveys this section.*



FD 3" PIPE
OLD USGS BM
USED NEAR FACE



56.81'

C CO RD 13-1 Point

FD SHI
N/S
BEHIND CONDUIT COVER



O.D.O.T. DISTRICT 2 SURVEY OFFICE

PERSONNEL _____ REFERENCE NO. 5 SHEET 7 OF _____

NOTES 1. Stone

H.C. J. Curtis

R.C. J. Householder

DATE 12 June 90

WEATHER cloudy

TEMP. 68°

ROUTE SR#120

COUNTY Fulton

TOWNSHIP Chesterfield

SECTION 12

T _____ R _____

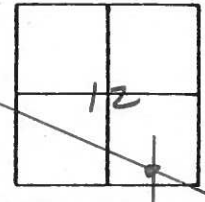
TYPE MONUMENT PK Nail

ON SURFACE - BELOW Surface

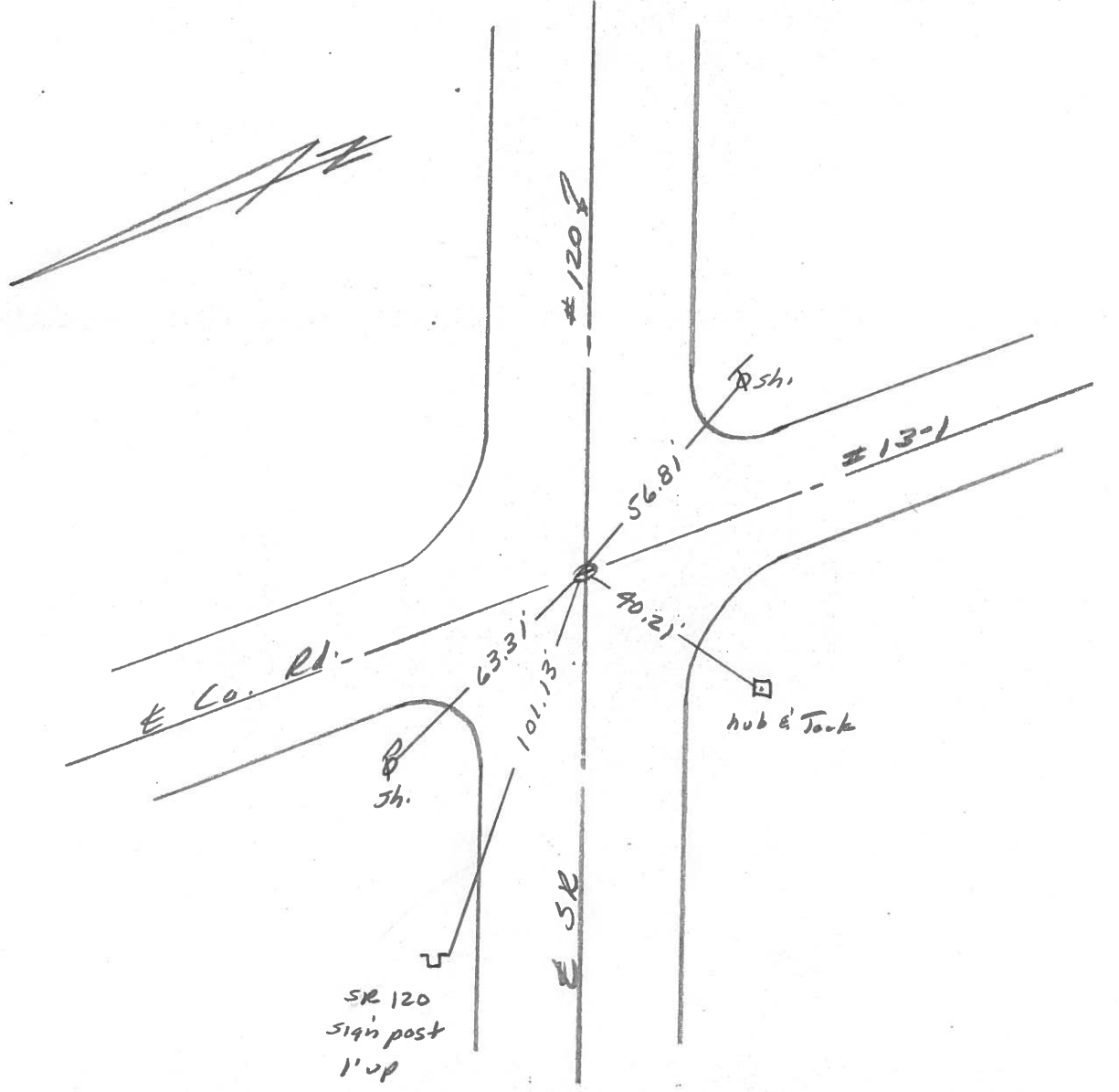
LEFT- & PAV'T. - RIGHT _____

_____ TO _____ EDGE PAVEMENT

S.L.M. 161+05



Set PK Nail 8-8-90 IRS



County Fulton S.R. 120

Date 29 Aug. 83

Township Chestnutfield

Weather Warm

Section 12

Temp. 83

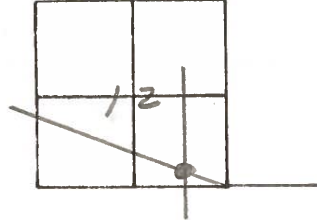
T N, R E

Personnel I. Stone

P. Neuse

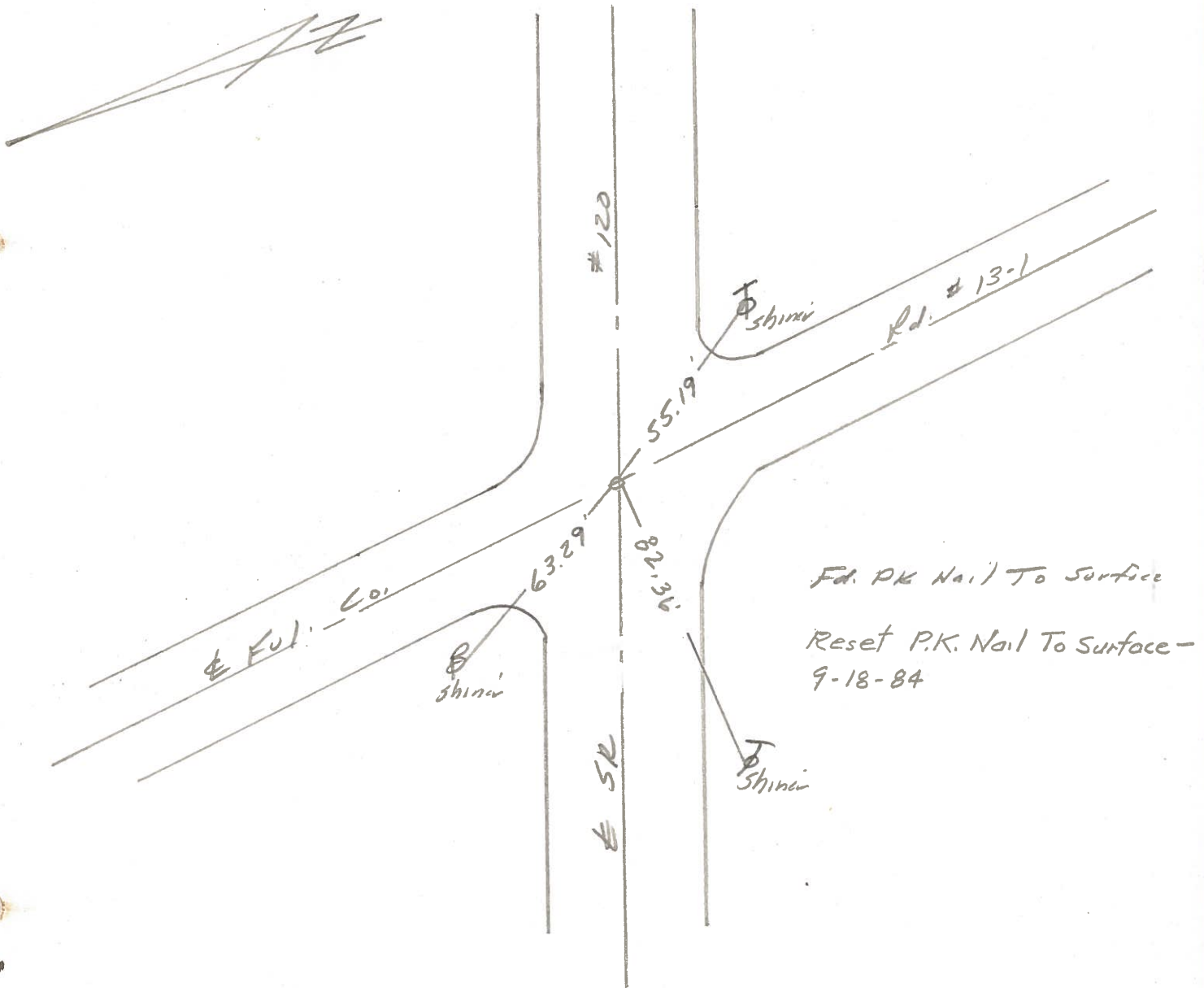
R. Michalak

D. Curtis



SLM STA. 161+13

REF. No. 5



S.R. 120 FULTON

SHEET NO. 1

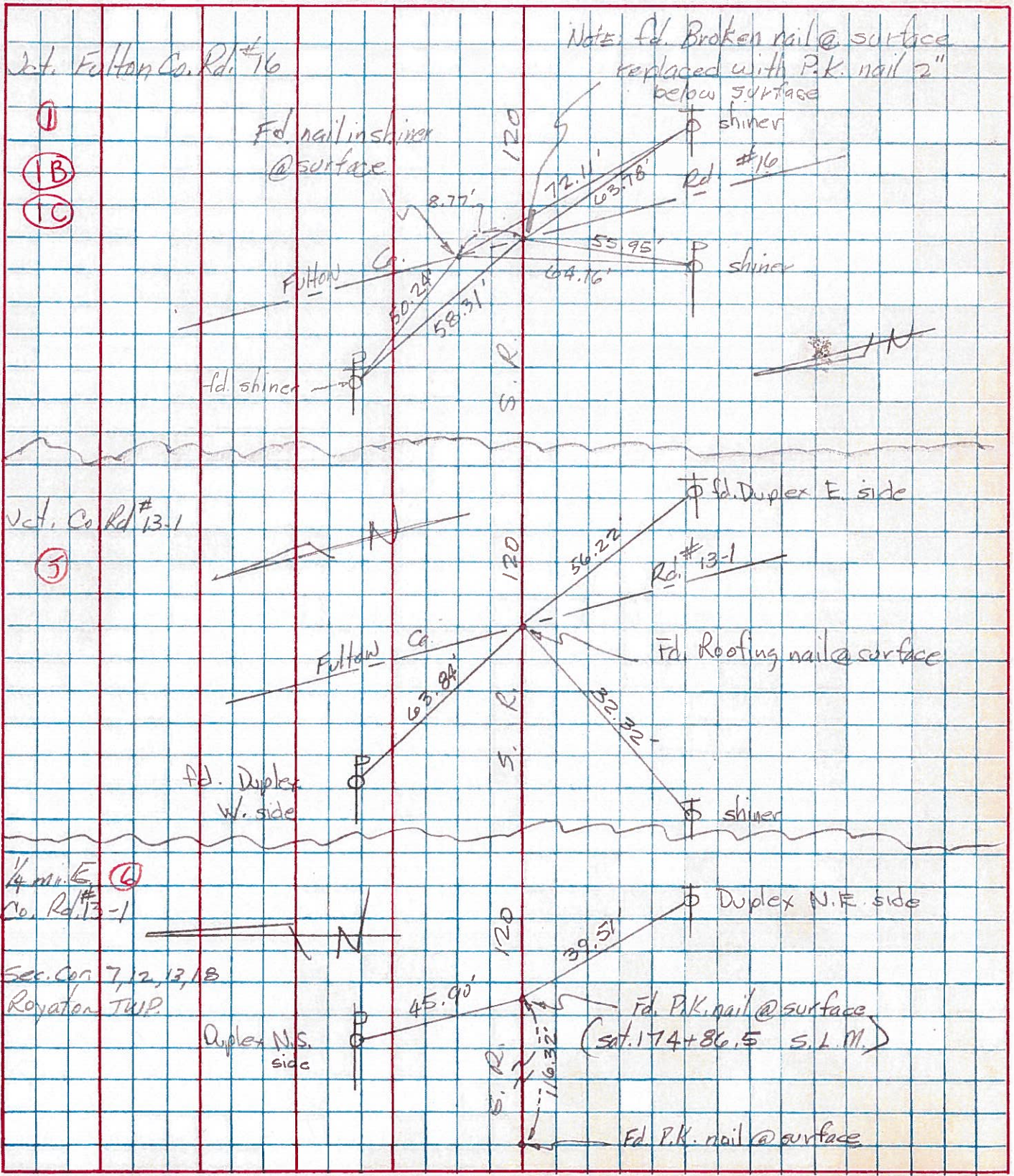
PERSONNEL	TITLE	PERSONNEL	TITLE
TOM SJC			
GRANATA			
NAN Y'S			

COUNTY Fulton DATE JUNE 28, 1973

S. R. 120 WEATHER _____

SEC. Chesterfield Twp TEMP. _____

DESCRIPTION _____ LEFT _____ CENTER LINE _____ RIGHT _____ JOB NO. _____



Note: Fd. Broken nail @ surface replaced with P.K. nail 2" below surface

Int. Fulton Co. Rd. #16

- ①
- ①B
- ①C

Fd. nail in shiner @ surface

shiner
Rd. #16
shiner

Vct. Co. Rd. #13-1

②

Fd. Duplex E. side

Fulton Co.

Fd. Roofing nail @ surface

Fd. Duplex W. side

shiner

1/4 mi. E. Co. Rd. #13-1

③

Duplex N.E. side

Sec. Cor. 7, 12, 13, 18
Royaton TWP

Duplex N.E. side

Fd. P.K. nail @ surface
(Sta. 174+86.5 S.L.M.)

Fd. P.K. nail @ surface