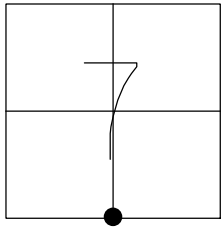


O.D.O.T. DISTRICT 2 SURVEY OFFICE (USE ONLY)

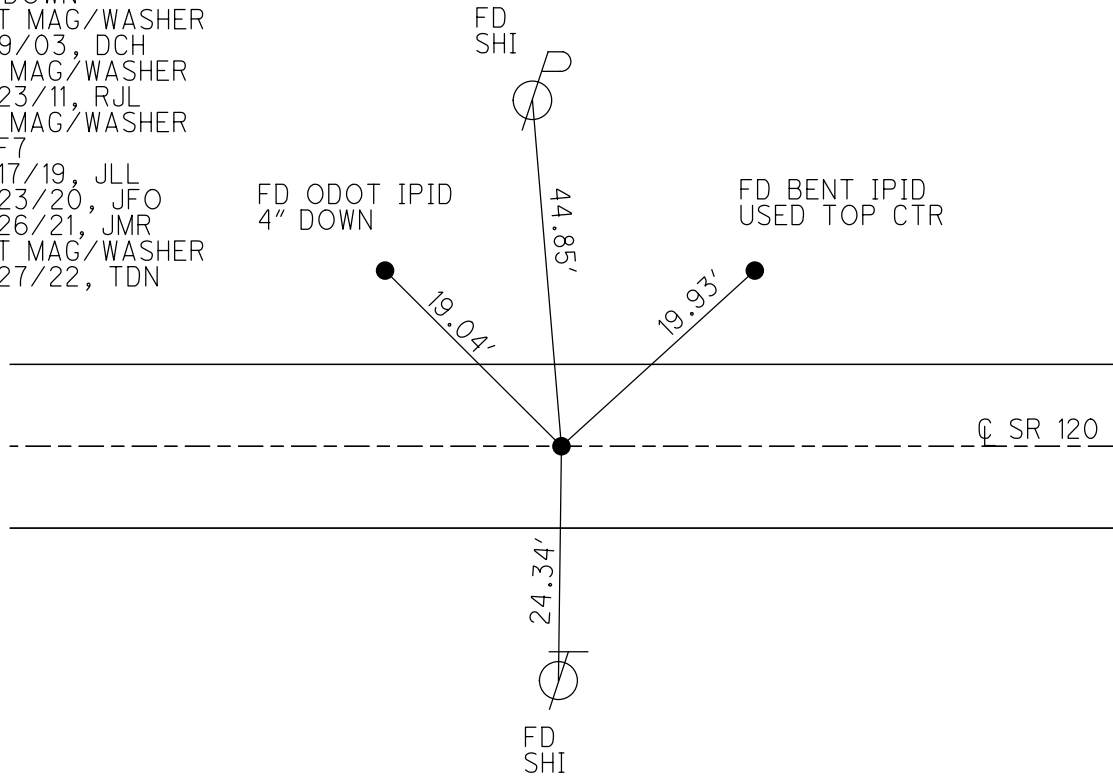
PERSONNEL _____ REFERENCE NO. 7 SHEET 14 OF 50
 NOTES NIESE DATE 4/27/22 ROUTE SR 120
 H.C. O'DONNELL WEATHER WINDY COUNTY FULTON
 R.C. PARADYSZ TEMP. 42° TOWNSHIP ROYALTON
 _____ AUBLE _____ SECTION 7
 DWG BY RHOADES PID 99582 T 9 N R 3 E

TYPE MONUMENT MAG/WASHER
 ON SURFACE - ~~BELOW~~ ON
 OFFSET CL PAVEMENT ON LT : RT
10.4' TO RT EDGE PAVEMENT
 STATION: 200+77



HORIZ. DATUM: NAD83 2011 GEOID: NAVD88 2012A
 GRID: NORTHING: 744425.931 EASTING: 1530257.613

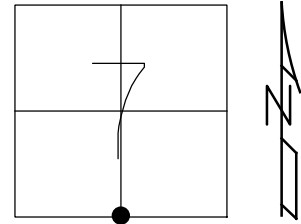
RECORD: 1926 PLAN
 STA. 200+76.8
 FD IPIPE
 FD R.R.SPIKE
 6" DOWN
 SET MAG/WASHER
 9/9/03, DCH
 FD MAG/WASHER
 5/23/11, RJL
 FD MAG/WASHER
 REF7
 5/17/19, JLL
 9/23/20, JFO
 2/26/21, JMR
 SET MAG/WASHER
 7/27/22, TDN



O.D.O.T. DISTRICT 2 SURVEY OFFICE (USE ONLY)

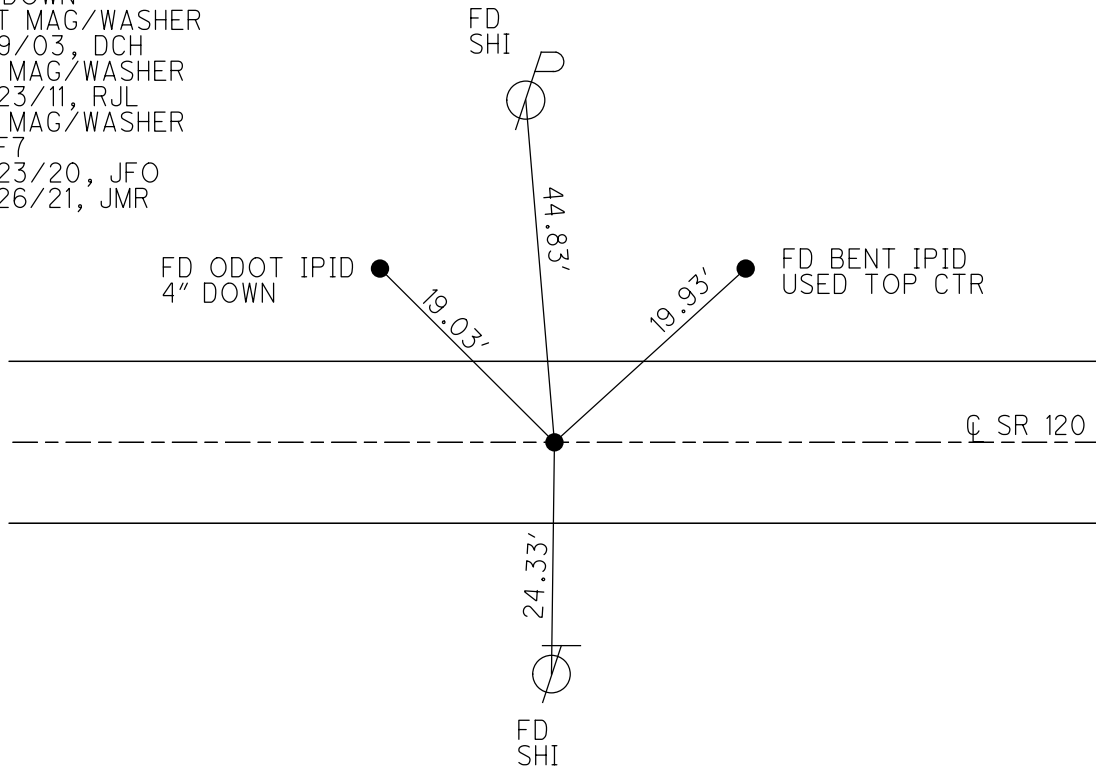
PERSONNEL _____ REFERENCE NO. 7 SHEET 13 OF 47
 NOTES NIESE DATE 2/26/21 ROUTE SR 120
 H.C. RHOADES WEATHER FAIR COUNTY FULTON
 R.C. _____ TEMP. 30° TOWNSHIP ROYALTON
 DWG BY NIESE PID PAVETRAIN SECTION 7
 T 9 N R 3 E

TYPE MONUMENT MAG/WASHER
 ON SURFACE - ~~BELOW~~ ON
 OFFSET Q PAVEMENT ON LT : RT
10.4' TO RT EDGE PAVEMENT
 STATION: 200+77



HORZ. DATUM: NAD83 2011 GEOID: NAVD88 2012A
 GRID: NORTHING: 744425.905 EASTING: 1530257.610

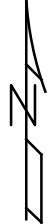
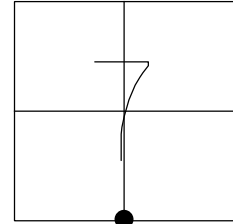
RECORD: 1926 PLAN
 STA. 200+76.8
 FD IPIPE
 FD R.R.SPIKE
 6" DOWN
 SET MAG/WASHER
 9/9/03, DCH
 FD MAG/WASHER
 5/23/11, RJL
 FD MAG/WASHER
 REF7
 9/23/20, JFO
 2/26/21, JMR



O.D.O.T. DISTRICT 2 SURVEY OFFICE (USE ONLY)

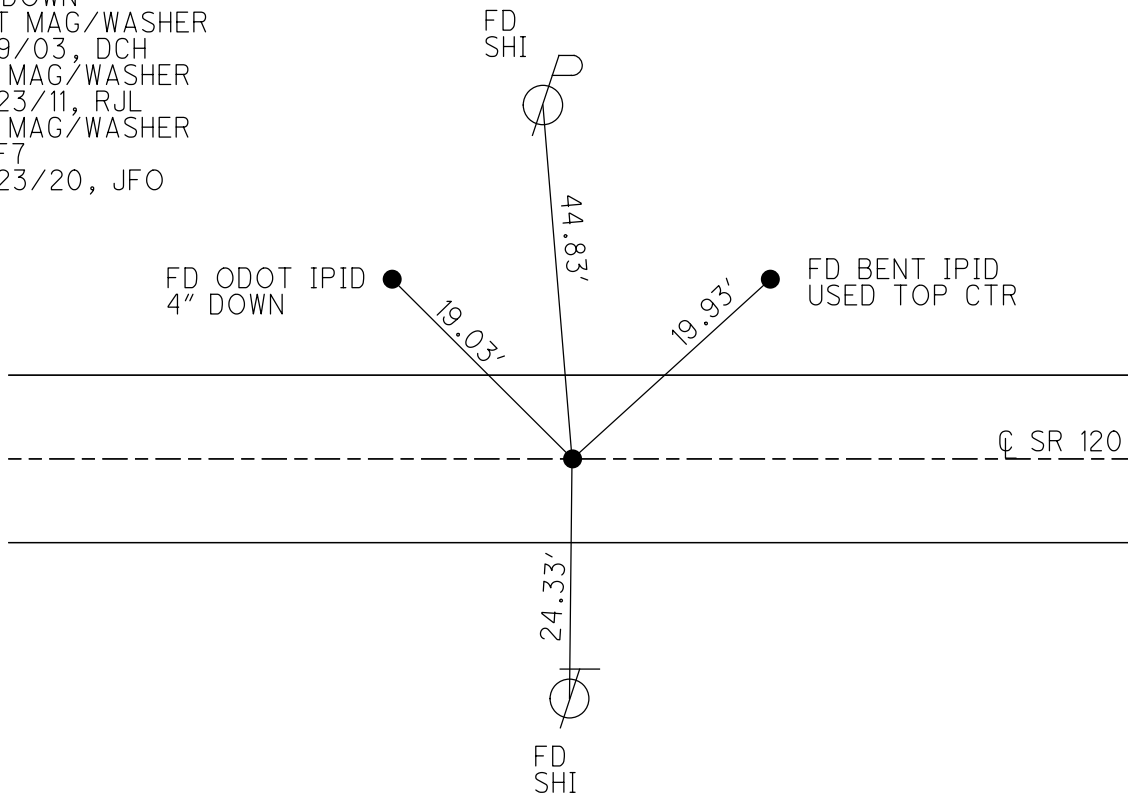
PERSONNEL _____ REFERENCE NO. 7 SHEET 13 OF 47
 NOTES RHOADES DATE 9/23/20 ROUTE SR 120
 H.C. O'DONNELL WEATHER SUNNY COUNTY FULTON
 R.C. AUBLE TEMP. 52° TOWNSHIP ROYALTON
 DWG BY RHOADES PID PAVETRAIN SECTION 7
 T 9 N R 3 E

TYPE MONUMENT MAG/WASHER
 ON SURFACE - ~~BELOW~~ ON
 OFFSET Q PAVEMENT ON LT : RT
10.4' TO RT EDGE PAVEMENT
 STATION: 200+77



HORZ. DATUM: NAD83 2011 GEOID: NAVD88 2012A
 GRID: NORTHING: 744425.905 EASTING: 1530257.610

RECORD: 1926 PLAN
 STA. 200+76.8
 FD IPIPE
 FD R.R.SPIKE
 6" DOWN
 SET MAG/WASHER
 9/9/03, DCH
 FD MAG/WASHER
 5/23/11, RJL
 FD MAG/WASHER
 REF7
 9/23/20, JFO



O.D.O.T. DISTRICT 2 SURVEY OFFICE

PERSONNEL _____

REFERENCE NO. 7

SHEET 13 OF 45

NOTES FINGER

DATE 5/23/11

ROUTE SR 120

H.C. LUMBREZER

WEATHER SUNNY

COUNTY FULTON

R.C. MOSER

TEMP. 70°

TOWNSHIP ROYALTON

SECTION 7

T 9 N R 3 E

TYPE MONUMENT MAG NAIL/WASHER

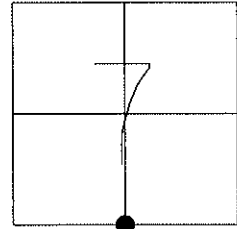
ON SURFACE - ~~BELOW~~ ON

LEFT - CL PAV'T - RIGHT ON

10.4' TO RT EDGE PAVEMENT

S.L.M. 200+77

Grid: Northing: 744425.909 Easting: 1530257.523



FD R.R.SPIKE 6" DOWN
0.25' NORTH, 0.20' WEST

REFERENCE TO 1926 PLAN:
FD PIPE AT PLAN STA.200+76.8

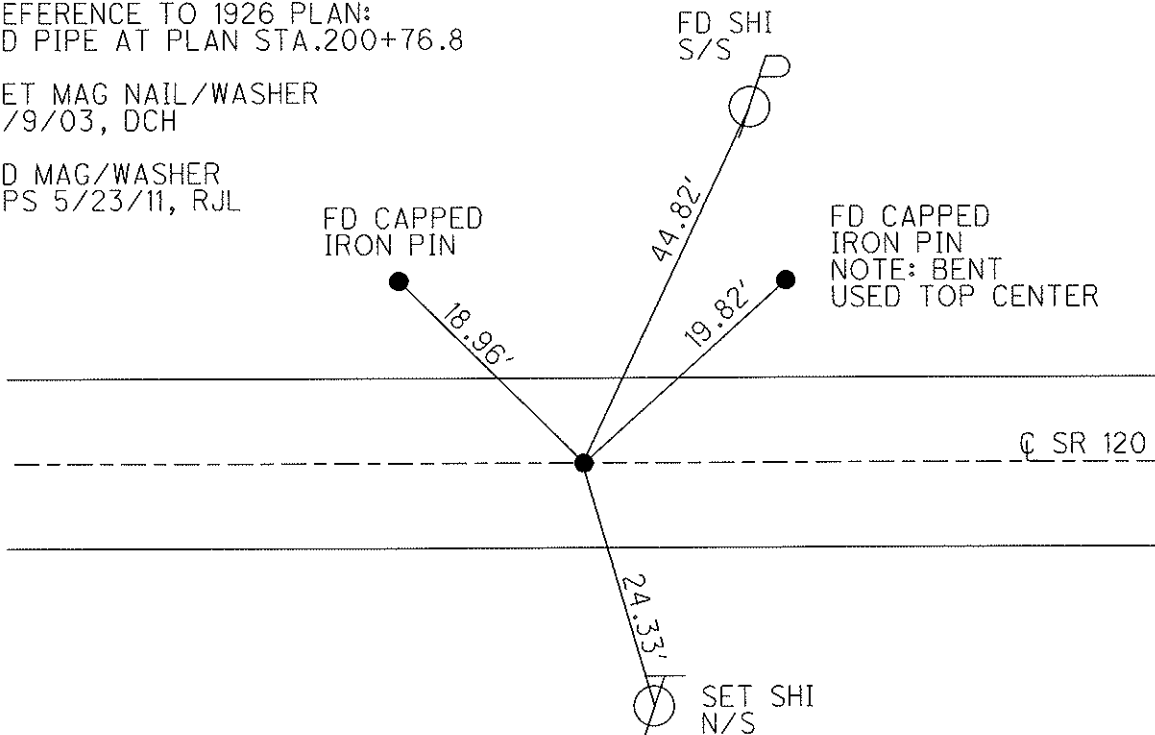
SET MAG NAIL/WASHER
9/9/03, DCH

FD MAG/WASHER
GPS 5/23/11, RJL

FD CAPPED
IRON PIN

FD SHI
S/S

FD CAPPED
IRON PIN
NOTE: BENT
USED TOP CENTER



O.D.O.T. DISTRICT 2 SURVEY OFFICE

PERSONNEL

REFERENCE NO. 7

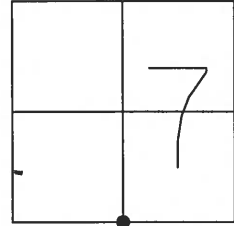
SHEET 11 OF 12

NOTES HOMAN
 H.C. NUHFER
 R.C. BALLMER
BRUMBAUGH

DATE 9-9-03
 WEATHER SUNNY
 TEMP. 75°

ROUTE SR 120
 COUNTY FULTON
 TOWNSHIP ROYALTON
 SECTION 7
T 9 S R 3 E

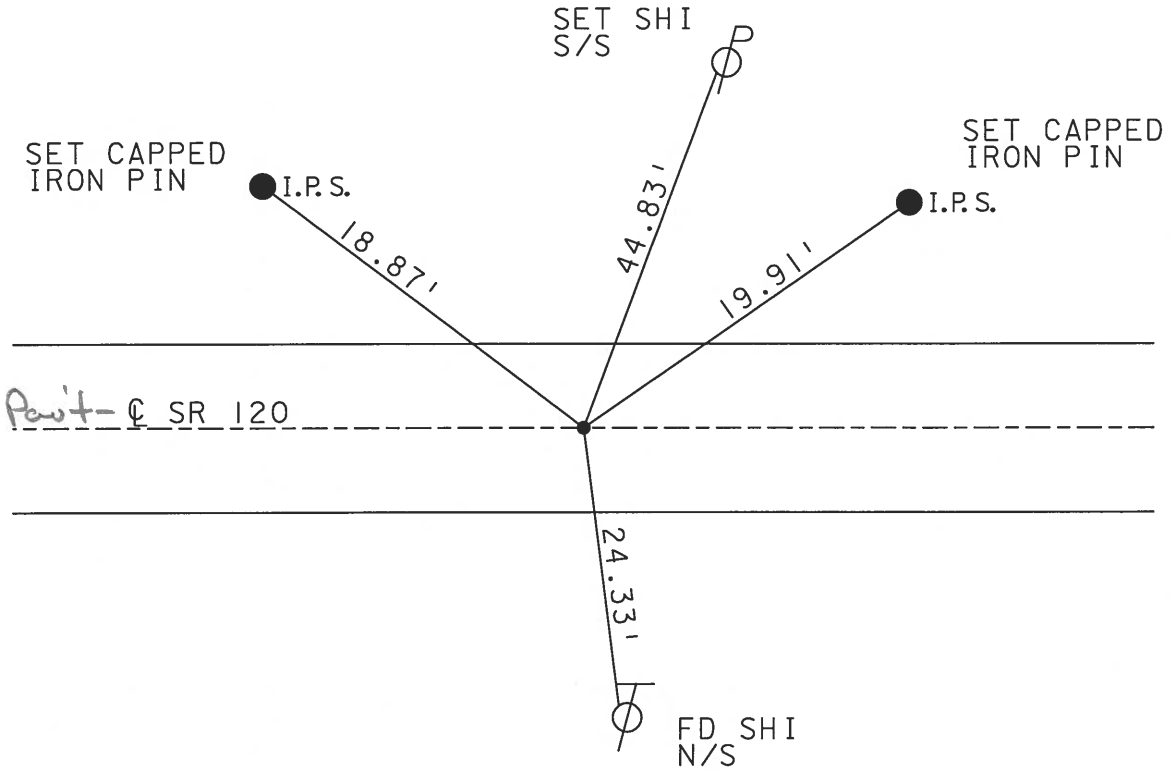
TYPE MONUMENT GAS PIPE
~~ON SURFACE~~ - ~~BELOW~~ 8"
~~LEFT - C~~ PAV'T - ~~RIGHT~~ ON
TO EDGE PAVEMENT
 S.L.M. 200+77



FD RR SPIKE 6" DOWN
 0.25' NORTH
 0.20' WEST

Reference to 1926 plan:
 Rd. Pipe at plan station 200+76.8

SET MAG NAIL
 & WASHER
 9-9-03
 DCH



O.D.O.T. DISTRICT 2 SURVEY OFFICE

PERSONNEL _____

REFERENCE NO. 7

SHEET 9 OF _____

NOTES 1. Stone

H.C. D. Curtis

DATE 12 June 90

ROUTE SR #120

R.C. J. Householder

WEATHER Cloudy

COUNTY Fulton

TEMP. 68°

TOWNSHIP Royalton

SECTION _____

T _____ R _____

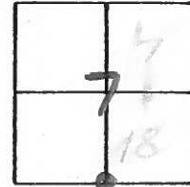
TYPE MONUMENT 1 1/2" Iron Rod

ON SURFACE - BELOW 6" deep

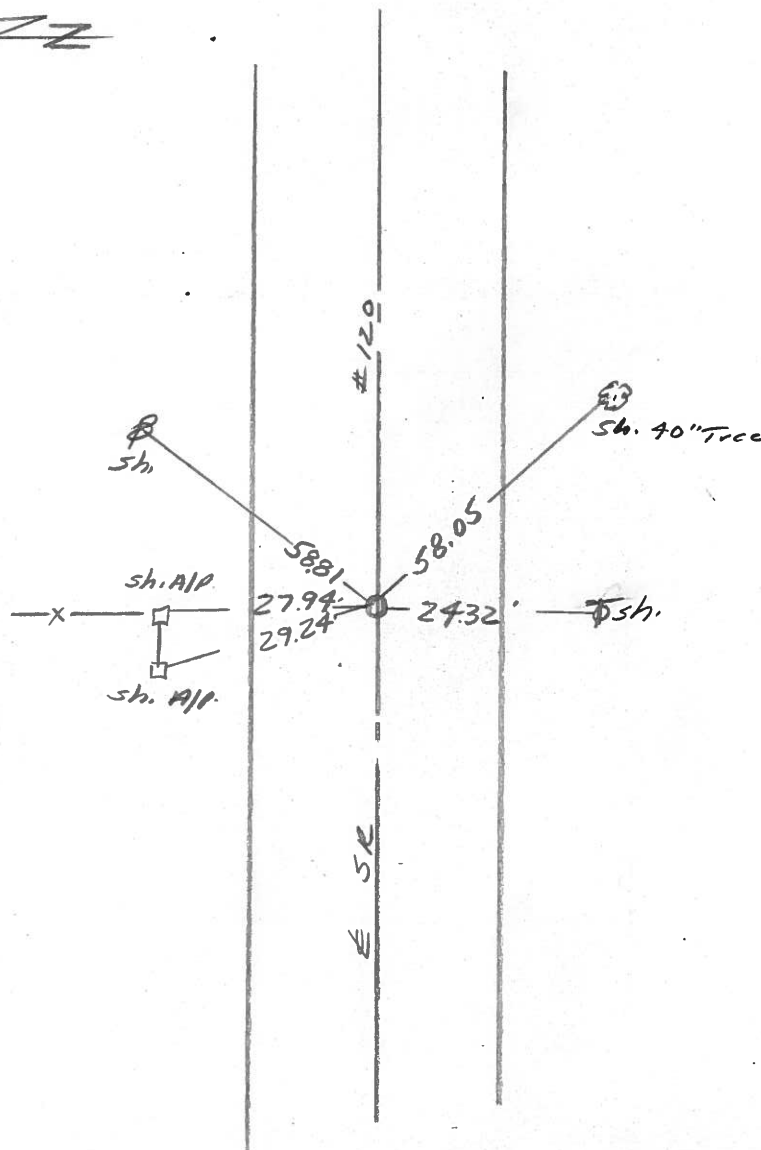
LEFT - \odot PAV'T. - RIGHT _____

_____ TO _____ EDGE PAVEMENT

S.L.M. 200+80



Set small RR Spk. 8-8-90 IRS



County Fulton S.R. 120

Township Royalton

Section 7-18

T N, R E

Personnel D. Curtis

P. Neuser

R. Michalak

7

Date 18 Sept. 84

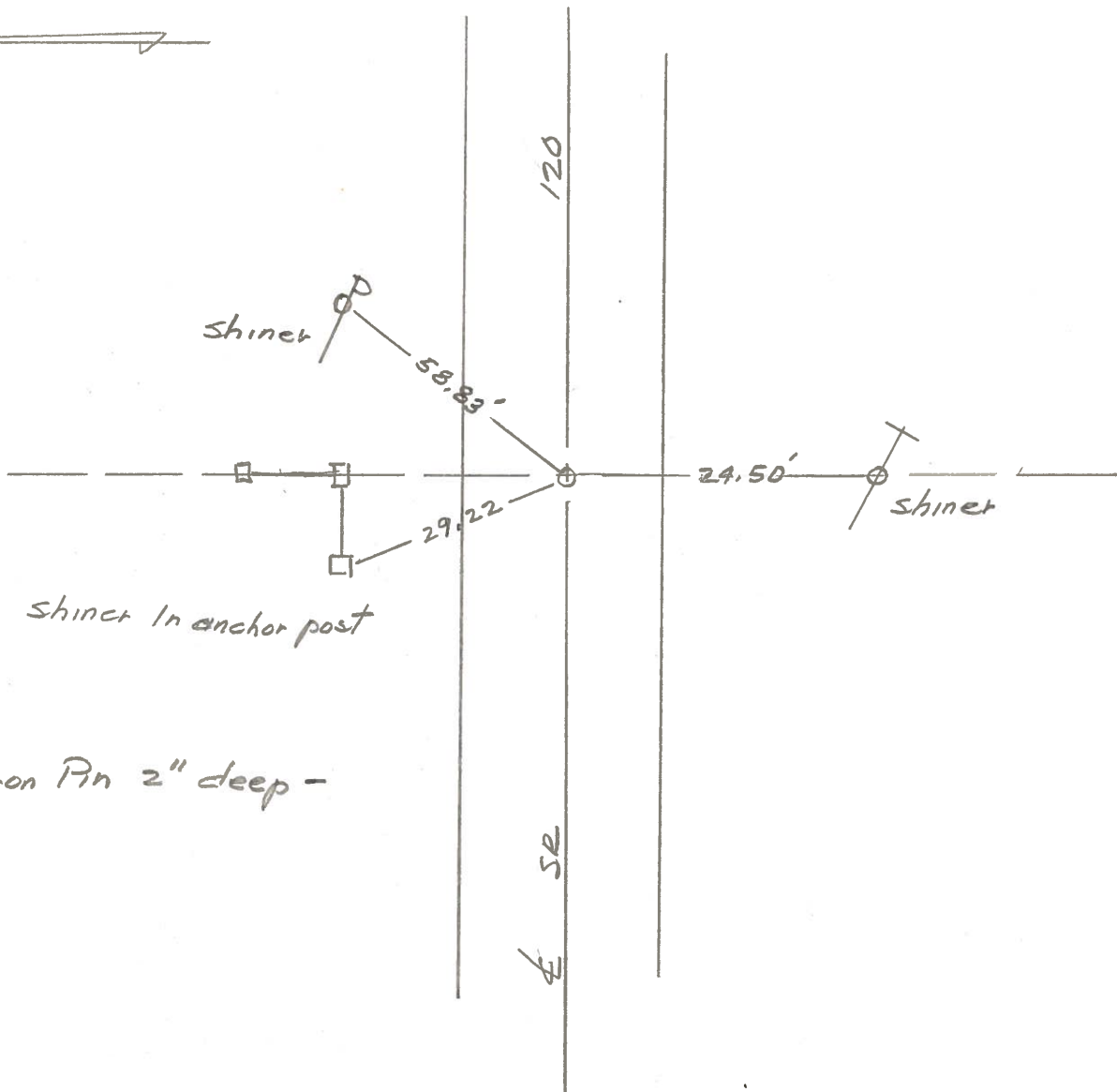
Weather Mild

Temp. 70°

12	7
18	18



SLM. STA. 200+89



Fd. 2" Iron Pin 2" deep -
9-18-84

PERSONNEL	TITLE	PERSONNEL	TITLE	COUNTY	DATE
Tomsic		Boyle		Fulton	July 10, 1973
Naiser				S. R. 120	WEATHER
Granata				SEC. Royalton Twp.	TEMP
Vanyo					

DESCRIPTION _____ LEFT _____ CENTER LINE _____ RIGHT _____ JOB NO. _____

