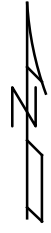
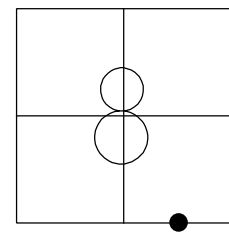


O.D.O.T. DISTRICT 2 SURVEY OFFICE (USE ONLY)

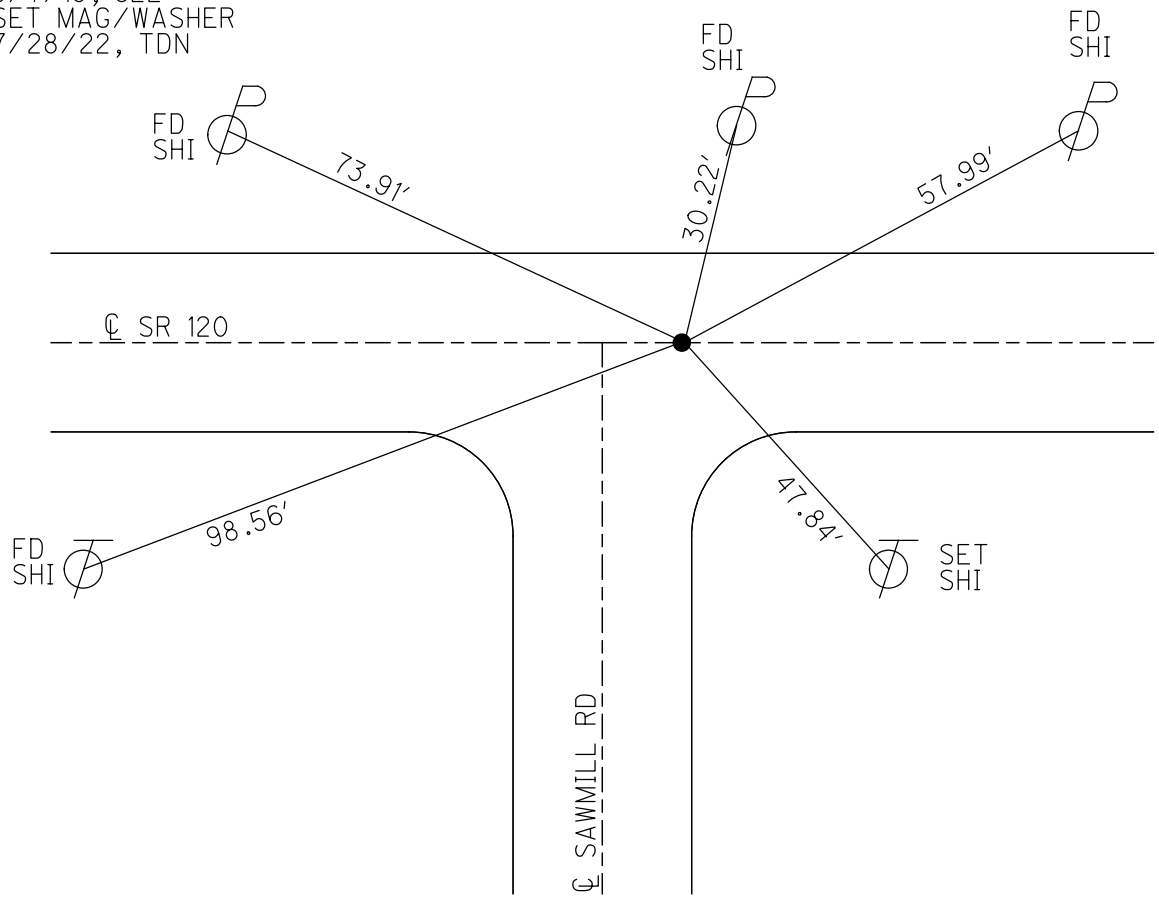
PERSONNEL \_\_\_\_\_ REFERENCE NO. 8 A SHEET 17 OF 50  
 NOTES RHOADES DATE 4/28/22 ROUTE SR 120  
 H.C. O'DONNELL WEATHER SUNNY COUNTY FULTON  
 R.C. RHOADES TEMP. 40° TOWNSHIP ROYALTON  
 DWG BY RHOADES PID 99582 SECTION 8  
 T 9 N R 3 E

TYPE MONUMENT MAG/WASHER  
 ON SURFACE - ~~BELOW~~ ON  
 OFFSET CL PAVEMENT 0.8' ~~±~~ : RT  
9.5' TO RT EDGE PAVEMENT  
 STATION: 268+55



HORZ. DATUM: NAD83 2011 GEOID: NAVD88 2018  
 GRID: NORTHING: 744439.075 EASTING: 1537033.706

RECORD:  
 SET MAG/WASHER  
 12/26/03, DCH  
 FD MAG/WASHER  
 5/23/11, RJL  
 REFA8  
 5/7/19, JLL  
 SET MAG/WASHER  
 7/28/22, TDN



O.D.O.T. DISTRICT 2 SURVEY OFFICE

PERSONNEL

REFERENCE NO. 8 A

SHEET 16 OF 45

NOTES FINGER

DATE 5/23/11

ROUTE SR 120

H.C. LUMBREZER

WEATHER SUNNY

COUNTY FULTON

R.C. MOSER

TEMP. 70°

TOWNSHIP ROYALTON

SECTION 8

T 9 N R 3 E

TYPE MONUMENT FD MAG NAIL/WASHER

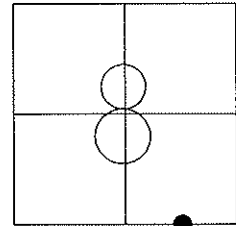
ON SURFACE - ~~BELOW~~ ON

~~LEFT~~ - Q PAV'T - RIGHT 0.8'

9.5' TO RT EDGE PAVEMENT

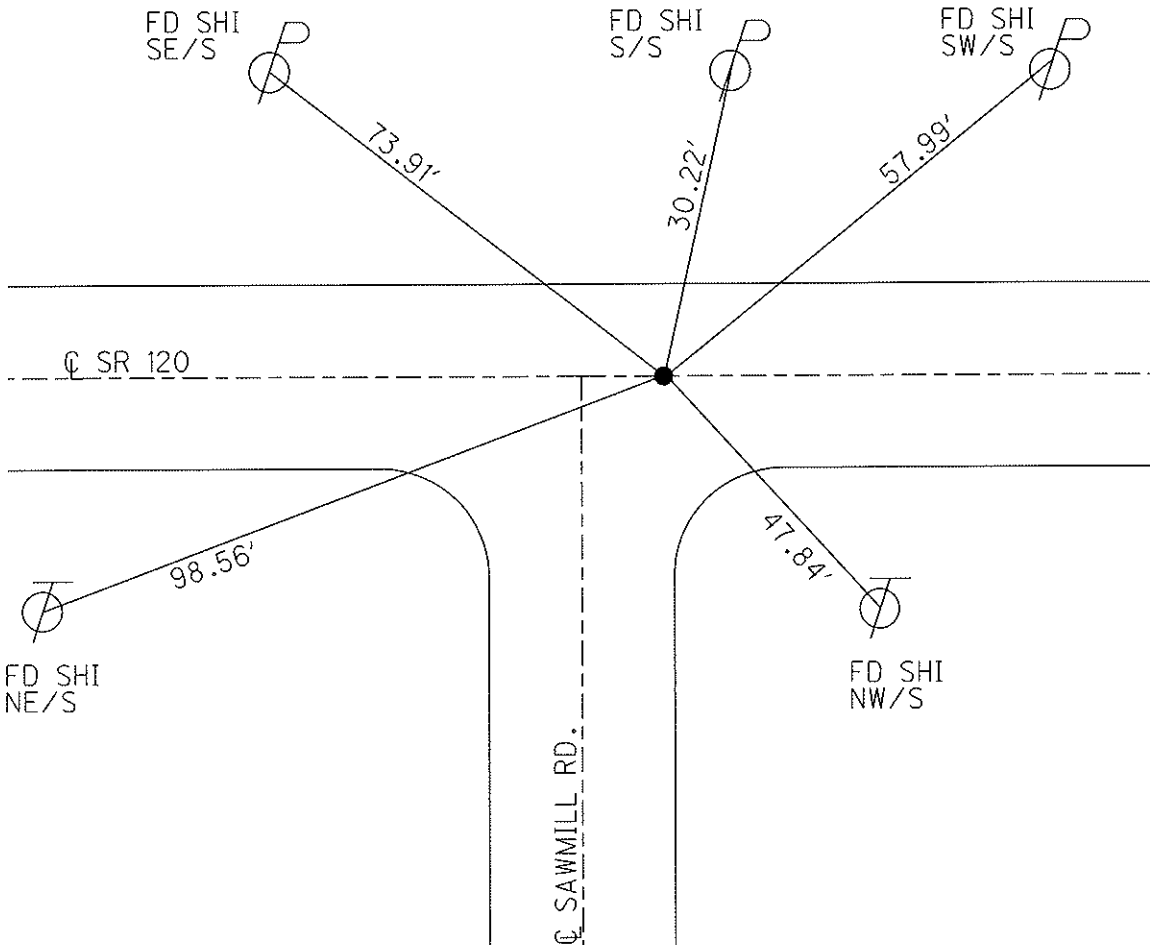
S.L.M. 268+55

Grid: Northing: 744438.969 Easting: 1537033.708



SET MAG/WASHER  
12/26/03, DCH

FD MAG/WASHER  
GPS 5/23/11, RJL



O.D.O.T. DISTRICT 2 SURVEY OFFICE

PERSONNEL

REFERENCE NO. 8 A

SHEET 1 OF 9

NOTES HOMAN

DATE 8-15-03

ROUTE SR 120

H.C. HOMAN

WEATHER CLOUDY

COUNTY FULTON

R.C. MEYERS

TEMP. 80°

TOWNSHIP ROYALTON

SECTION 8

T 9 S R 3 E

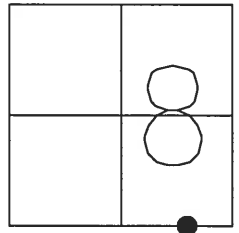
TYPE MONUMENT PK NAIL

ON SURFACE - ~~BELOW~~ ON

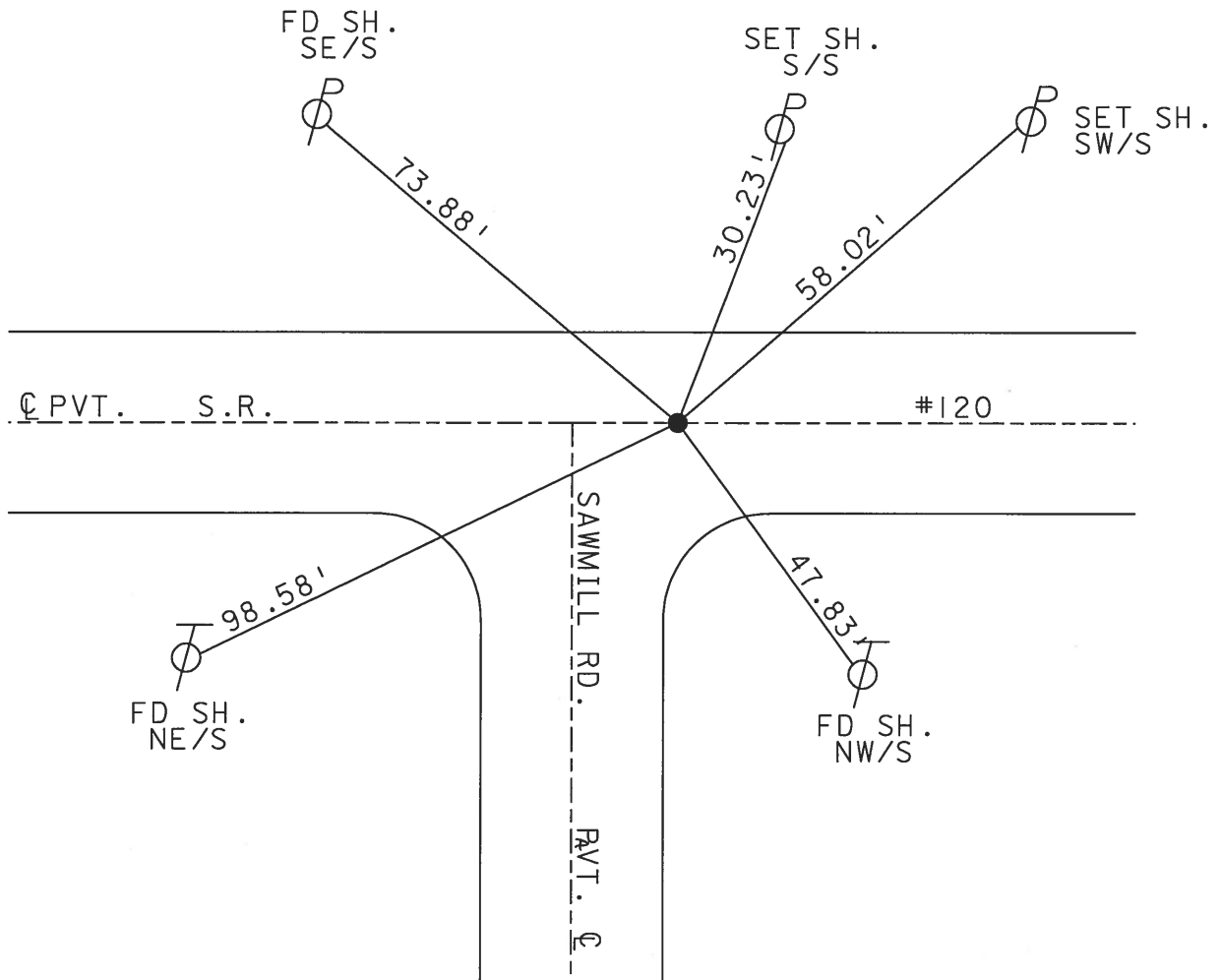
~~LEFT - C PAV'T - RIGHT~~ ON

TO EDGE PAVEMENT

S.L.M. 268+55



SET MAG & WASHER  
12-26-03  
DCH



Resurfaced 2003

O.D.O.T. DISTRICT 2 SURVEY OFFICE

PERSONNEL

REFERENCE NO. 8A

SHEET 11 OF     

NOTES 1. Stone

H.C. D. Curtis

R.C. J. Householder

DATE 14 June 90

WEATHER Warm

TEMP. 74°

ROUTE SR#120

COUNTY Fulton

TOWNSHIP Royalton

SECTION 8

T      R     

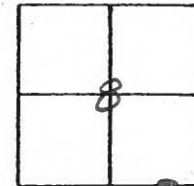
TYPE MONUMENT PK Nail

ON SURFACE - BELOW Surface

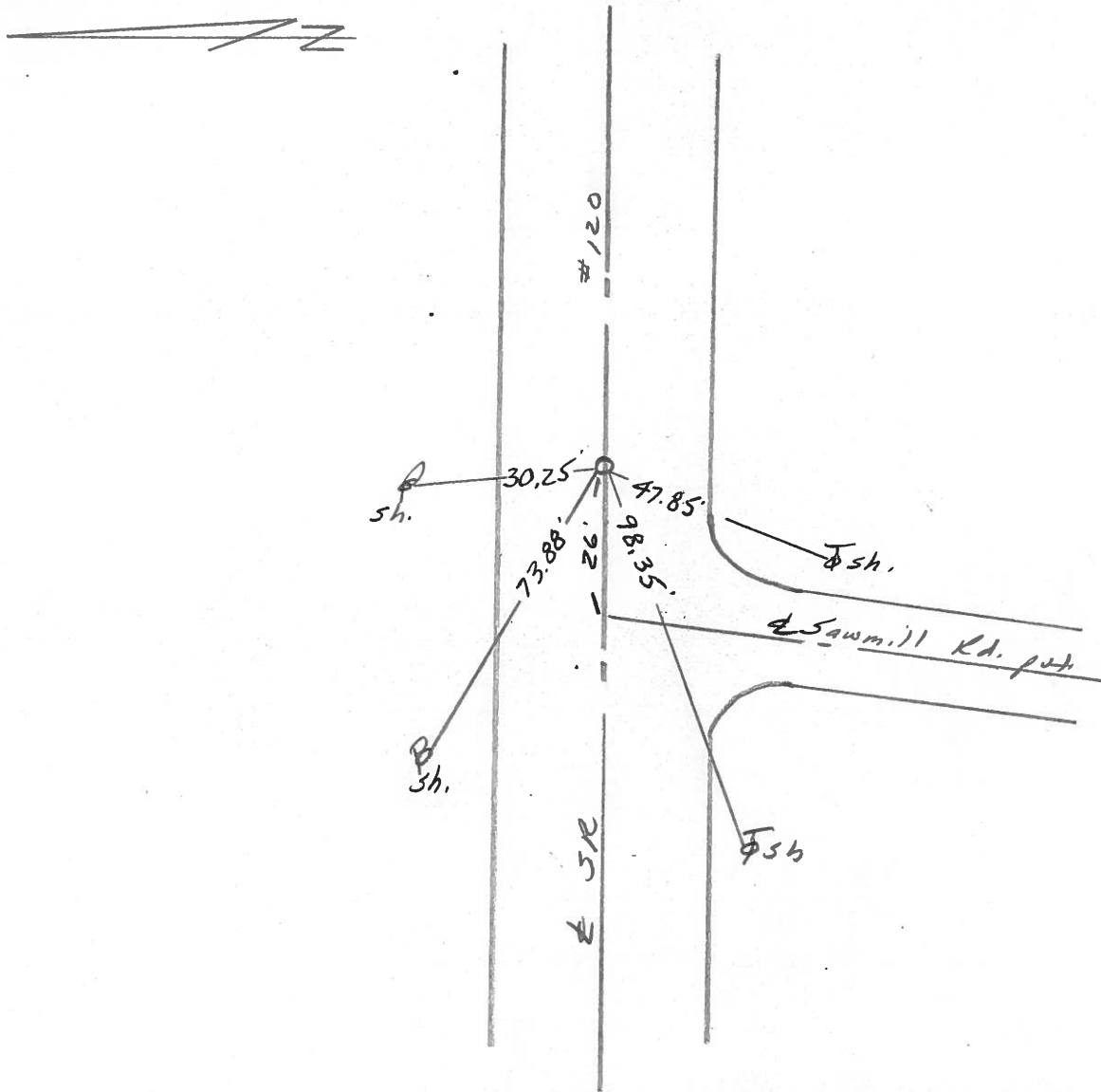
LEFT- & PAV'T. - RIGHT     

TO      EDGE PAVEMENT

S.L.M. 268 +55



Set PK Nail 8-8-90 IRS



County Fulton S.R. 120

Date 18 Sept. 84

Township Royalton

Weather Mild

Section 18-9-17-18

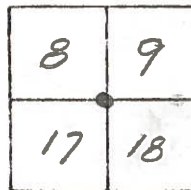
Temp. 70°

T\_N, R\_E

Personnel D. Curtis

P. Neiser

R. Michalak



SLM 268+75

REF 8A

