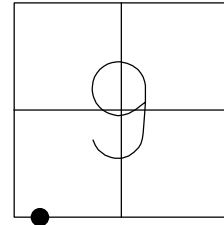


O.D.O.T. DISTRICT 2 SURVEY OFFICE (USE ONLY)

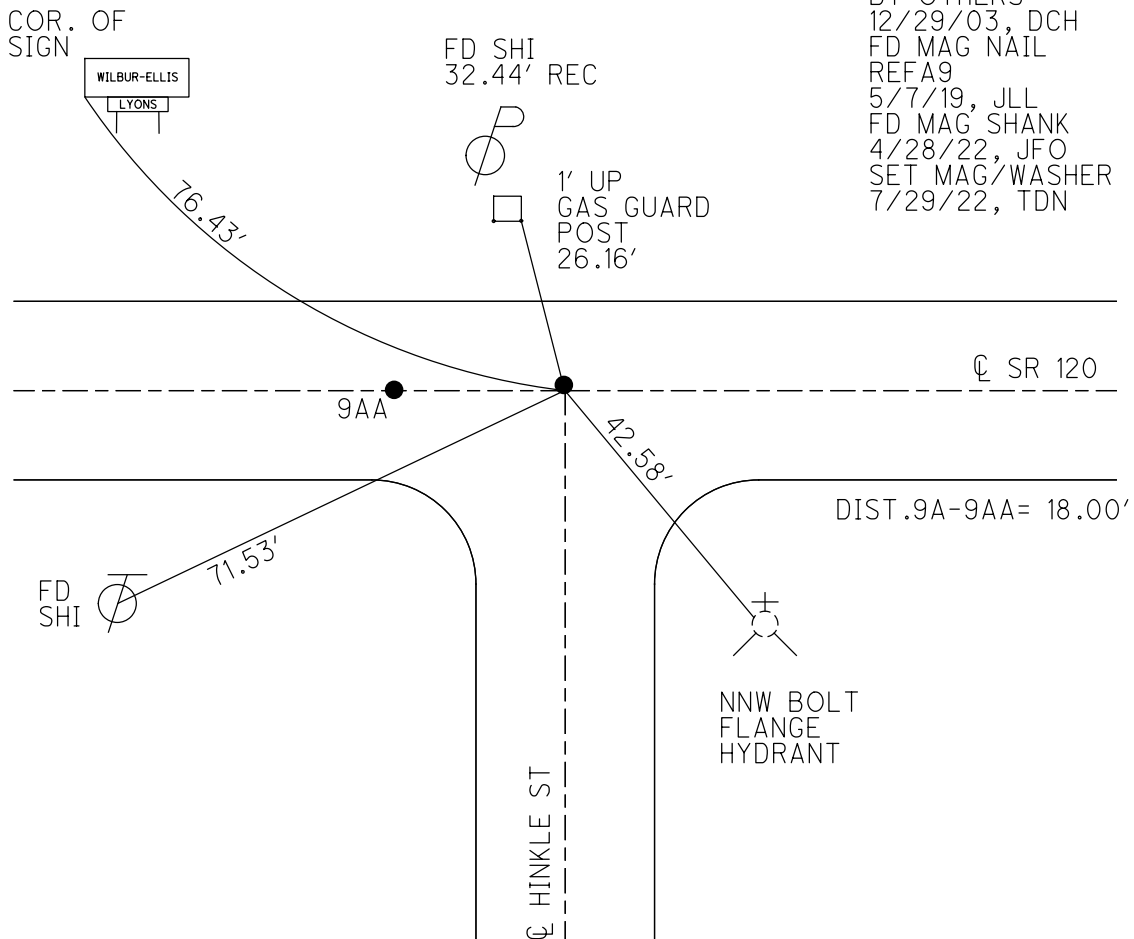
PERSONNEL _____ REFERENCE NO. 9 A SHEET 21 OF 50
 NOTES RHOADES DATE 4/28/22 ROUTE SR 120
 H.C. O'DONNELL WEATHER SUNNY COUNTY FULTON
 R.C. RHOADES TEMP. 40° TOWNSHIP ROYALTON
 DWG BY RHOADES PID 99582 SECTION 9
 T 9 N R 3 E

TYPE MONUMENT MAG SHANK
 ON SURFACE - ~~BELOW~~ ON
 OFFSET \odot PAVEMENT 1.0' LT : ~~RT~~
- TO - EDGE PAVEMENT
 STATION: 288+80

HORIZ. DATUM: NAD83 2011 GEOID: NAVD88 2018
 GRID: NORTHING: 744441.367 EASTING: 1539058.091



RECORD:
 DNF
 8/15/03, DCH
 MAG NAIL SET
 BY OTHERS
 12/29/03, DCH
 FD MAG NAIL
 REFA9
 5/7/19, JLL
 FD MAG SHANK
 4/28/22, JFO
 SET MAG/WASHER
 7/29/22, TDN



O.D.O.T. DISTRICT 2 SURVEY OFFICE

PERSONNEL _____

REFERENCE NO. 9 A

SHEET 19 OF 45

NOTES HOMAN

DATE 8/15/03

ROUTE SR 120

H.C. HOMAN

WEATHER CLOUDY

COUNTY FULTON

R.C. MEYERS

TEMP. 80°

TOWNSHIP ROYALTON

SECTION 9

T 9 N R 3 E

TYPE MONUMENT DNF

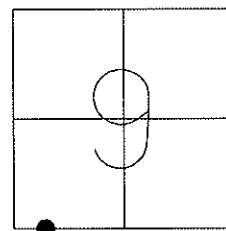
ON SURFACE - ~~BELOW~~ ON _____

LEFT - Q PAV'T - ~~RIGHT~~ 1.0'

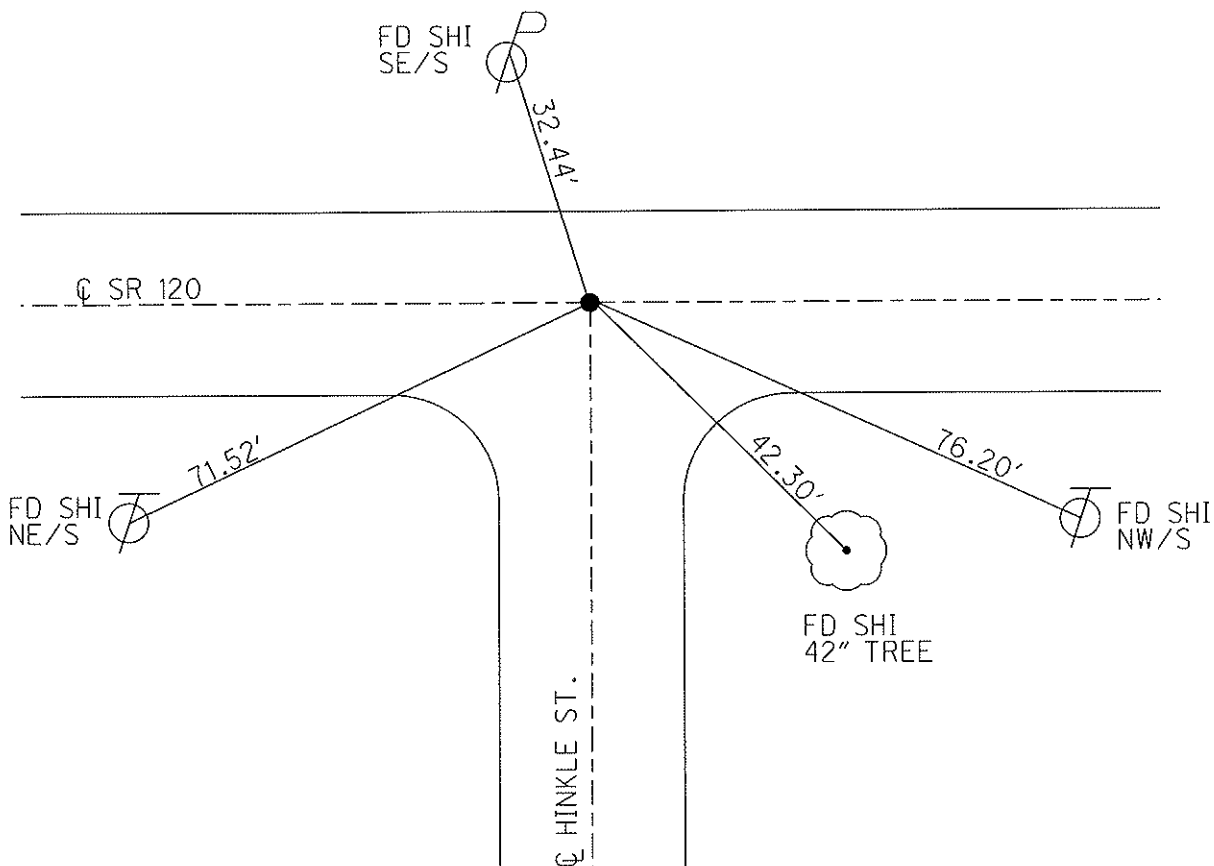
_____ TO _____ EDGE PAVEMENT

S.L.M. 288+80

Grid: Northing: _____ Easting: _____



MAG NAIL SET
BY OTHERS
12/29/03, DCH



O.D.O.T. DISTRICT 2 SURVEY OFFICE

PERSONNEL _____

REFERENCE NO. 9A

SHEET 4 OF 9

NOTES HOMAN

DATE 8-15-03

ROUTE S.R. 120

H.C. HOMAN

WEATHER CLOUDY

COUNTY FULTON

R.C. MEYERS

TEMP. 80°

TOWNSHIP ROYALTON

SECTION 9

T 9 S R 3 E

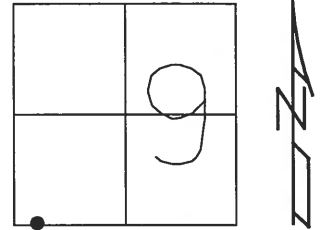
TYPE MONUMENT _____ GONE _____

ON SURFACE - BELOW _____

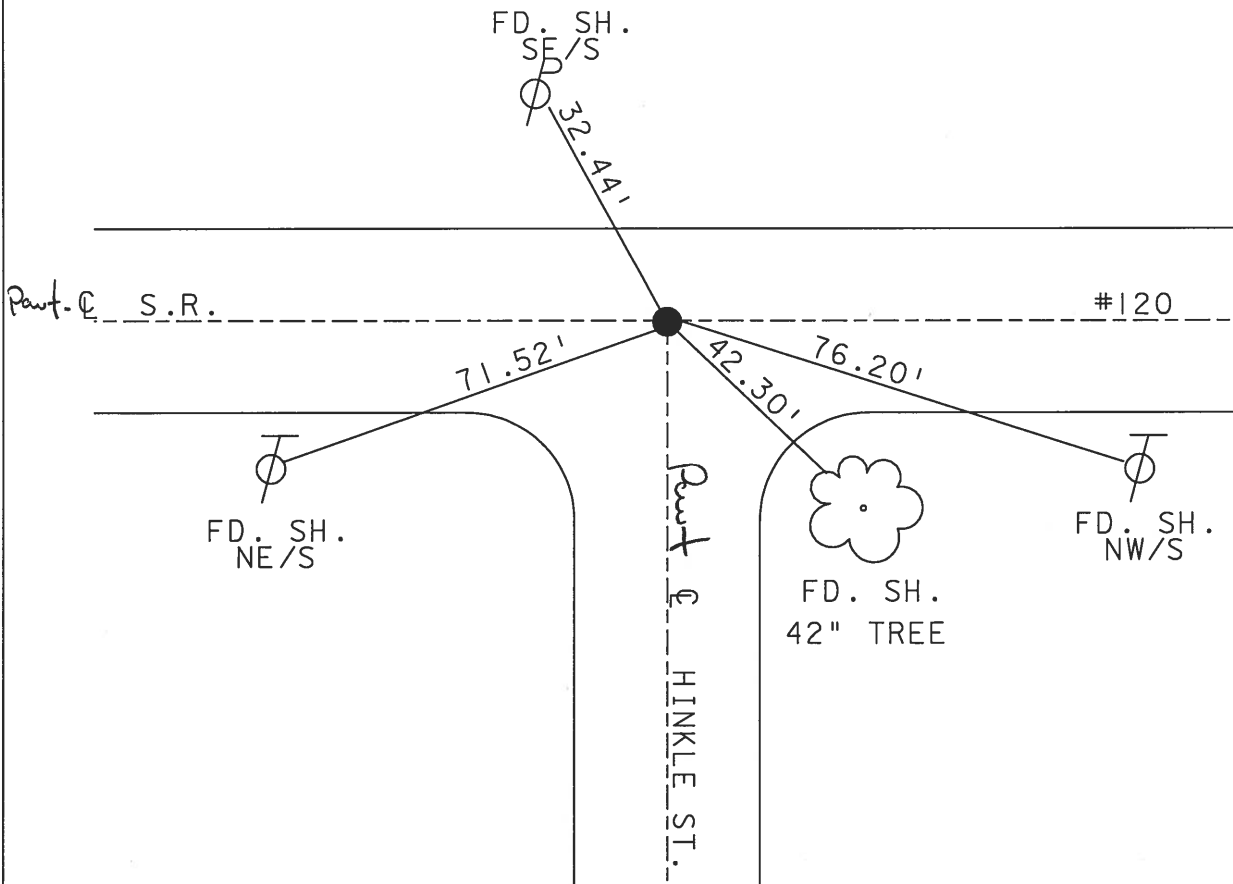
LEFT - Q PAV'T - ~~RIGHT~~ _____ 1.0'

_____ TO _____ EDGE PAVEMENT

S.L.M. _____ 288+80 _____



MAG NAIL
SET BY
OTHERS
DCH



O.D.O.T. DISTRICT 2 SURVEY OFFICE

PERSONNEL _____

REFERENCE NO. 9A

SHEET 14 OF _____

NOTES 1. Stone

H.C. D. Curtis

DATE 14 June 90

ROUTE SR#120

R.C. J. Hirschholder

WEATHER Warm

COUNTY Fulton

TEMP. 76°

TOWNSHIP Royalton

SECTION 9

T _____ R _____

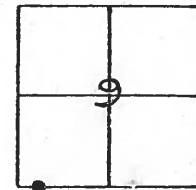
TYPE MONUMENT PK Nail

ON SURFACE - BELOW Surface

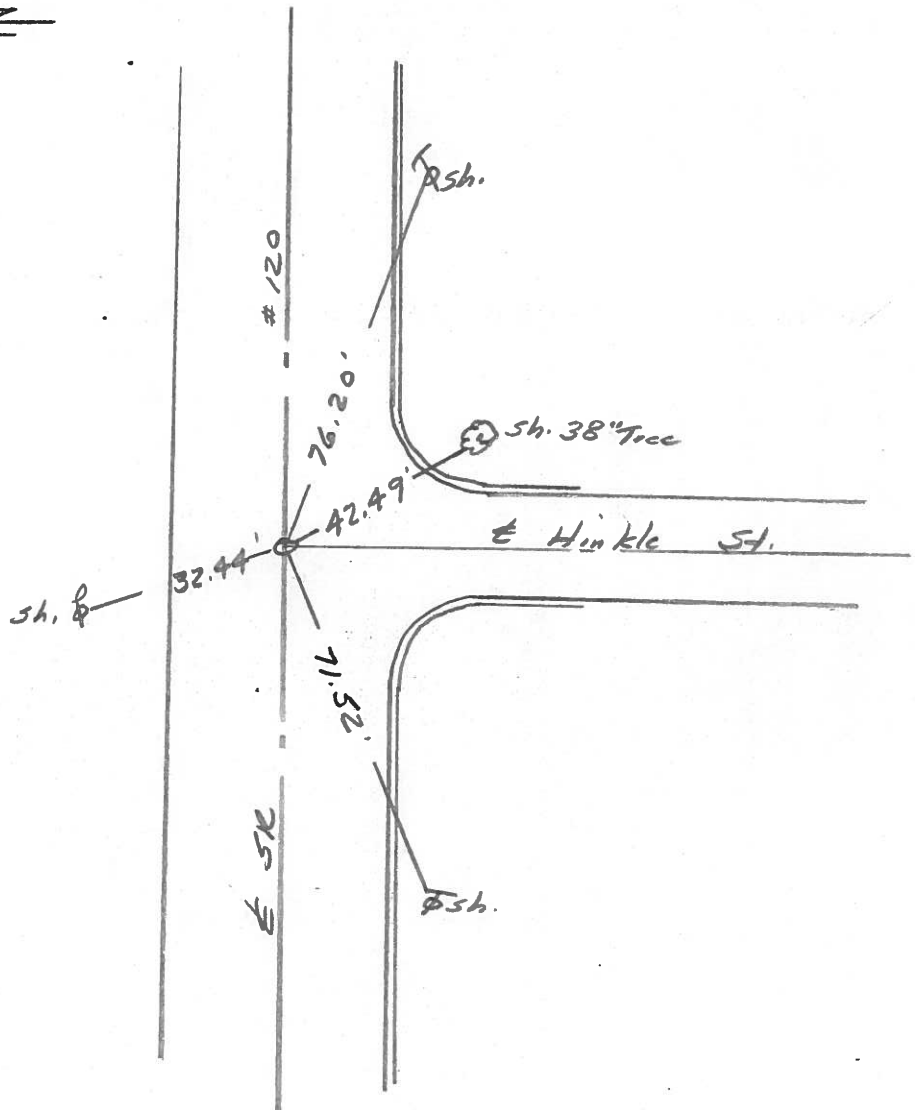
LEFT - & PAV'T. - RIGHT _____

_____ TO _____ EDGE PAVEMENT

S.L.M. 288+80



Set PK Nail 8-8-90 IRS



ODOT. DISTRICT 2 SURVEY OFFICE

SHEET 14 OF 20

County Fulton S.R. 120

Township Royalton

Section _____

T N, R E

Personnel D. Curtis

P. Neuser

R. Michalak

Date 19 Sept. 84

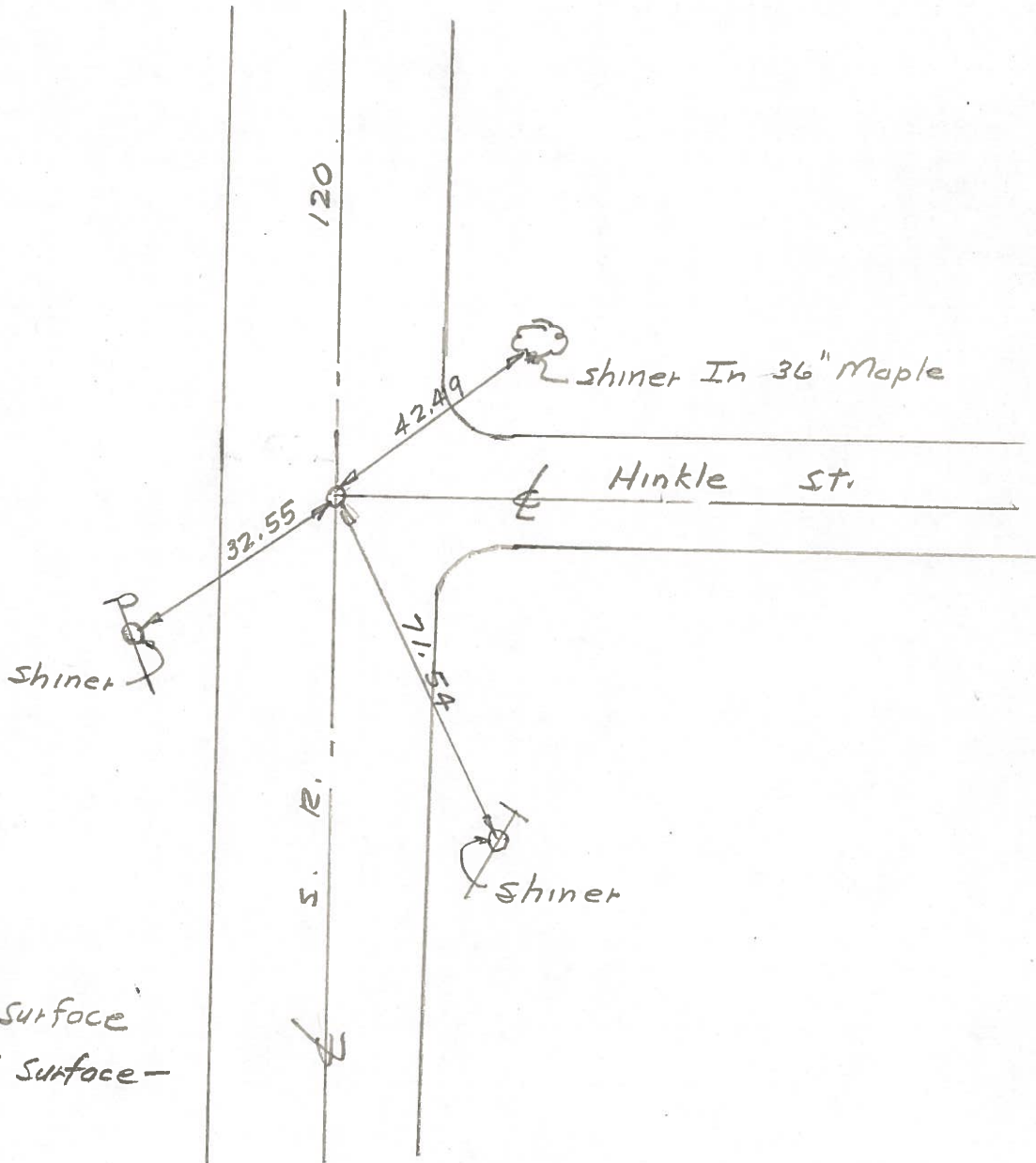
Weather Mild

Temp. 75°

9	
16	



#9A



Fel. P.K. Nail To Surface

Reset P.K. Nail To Surface -

9-19-84